

# 2023 Joint Committee on Ways & Means Public Safety Subcommittee Presentation – Phase 1

*March 1, 2023*

**Oregon Department of Justice**

Ellen F. Rosenblum, Attorney General



# General Counsel Division

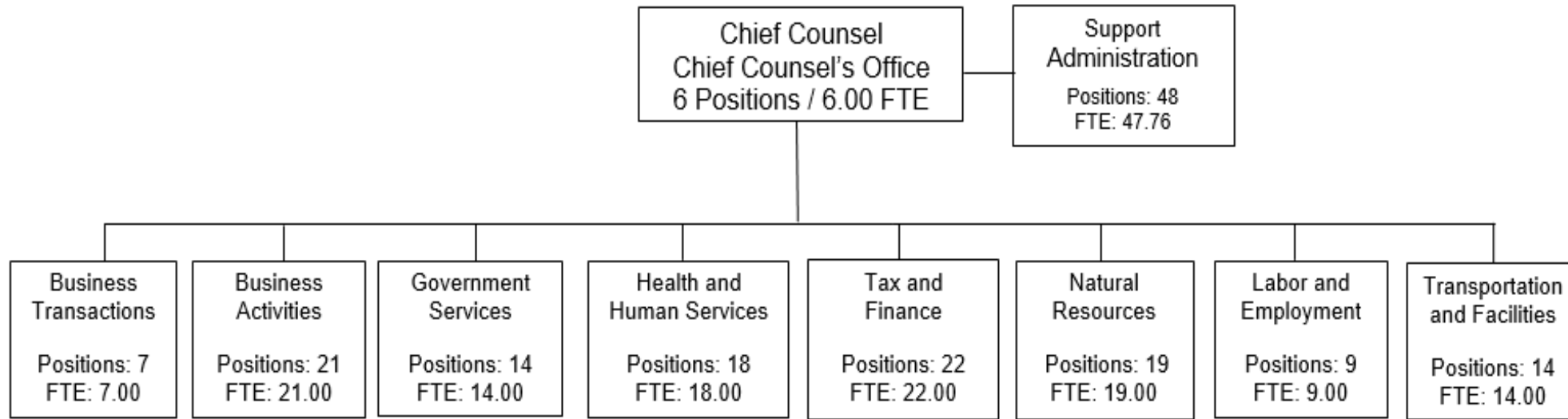
**Oregon Department of Justice**

Ellen F. Rosenblum, Attorney General

**Department of Justice: General Counsel Division**



# General Counsel



2021-23 Legislatively Approved Budget	
Positions	178
FTE	171.55

2023-25 Agency Request Budget	
Positions	178
FTE	177.76

Change to 2021-23 Legislatively Approved Budget	
Positions	0
FTE	6.21

# Mission

The General Counsel Division provides the day-to-day legal services to our state agency clients to help them effectively and lawfully advance their missions.

# Program Summary

Centralized legal services at direction of Attorney General for uniformity and enterprise-wide approach

Provides a broad range of legal services to over 100 state agencies, boards and commissions

Assigns “contact counsel” to each agency

Emphasizes preventative law and client education

Ordinarily provides legal services only at agency request

# General Counsel Services

---

Provides day-to-day legal advice

---

Represents agencies in contested case hearings

---

Drafts and reviews contracts, including performing mandatory legal sufficiency review

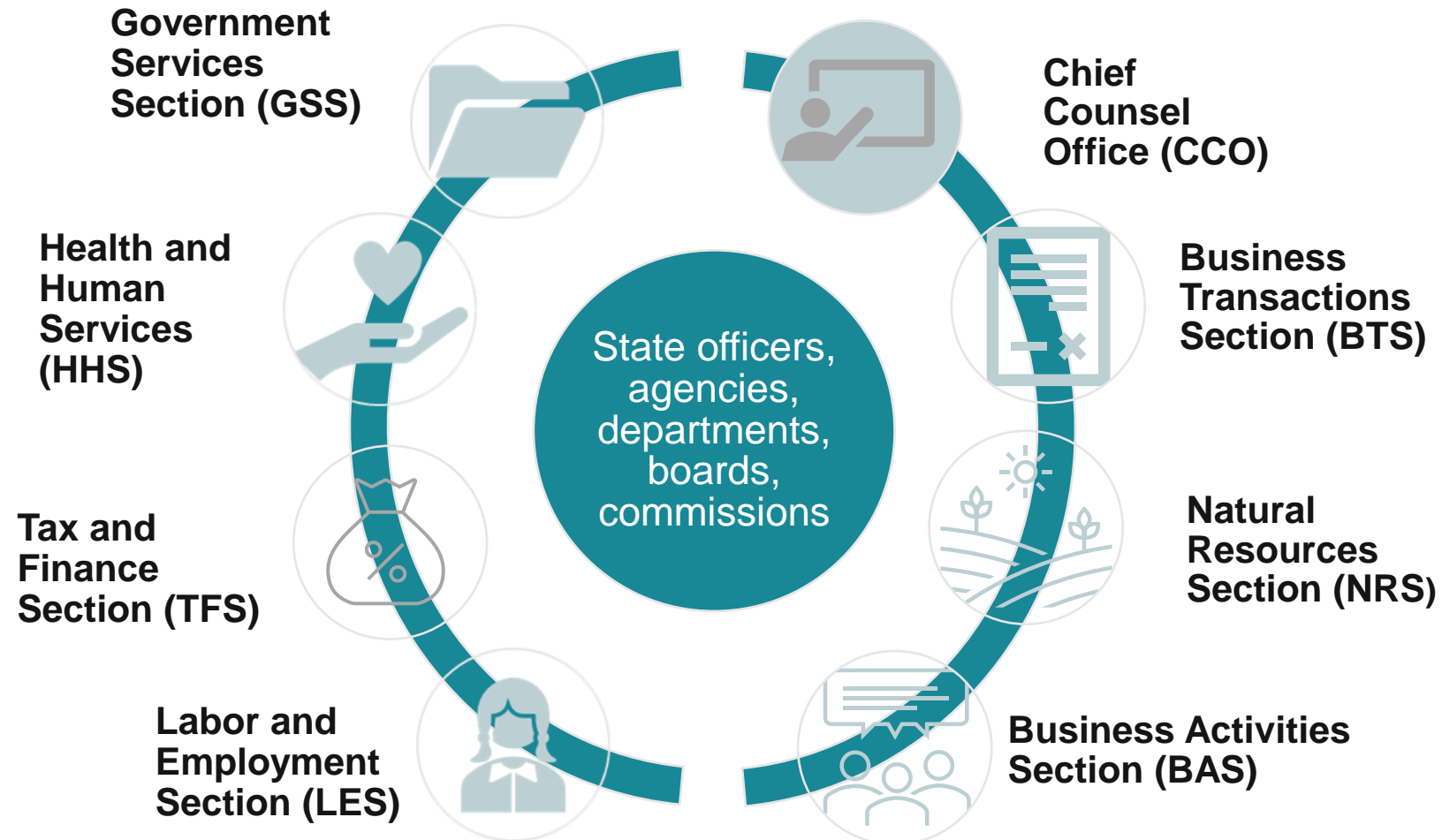
---

Issues Letters of Advice and Attorney General Opinions

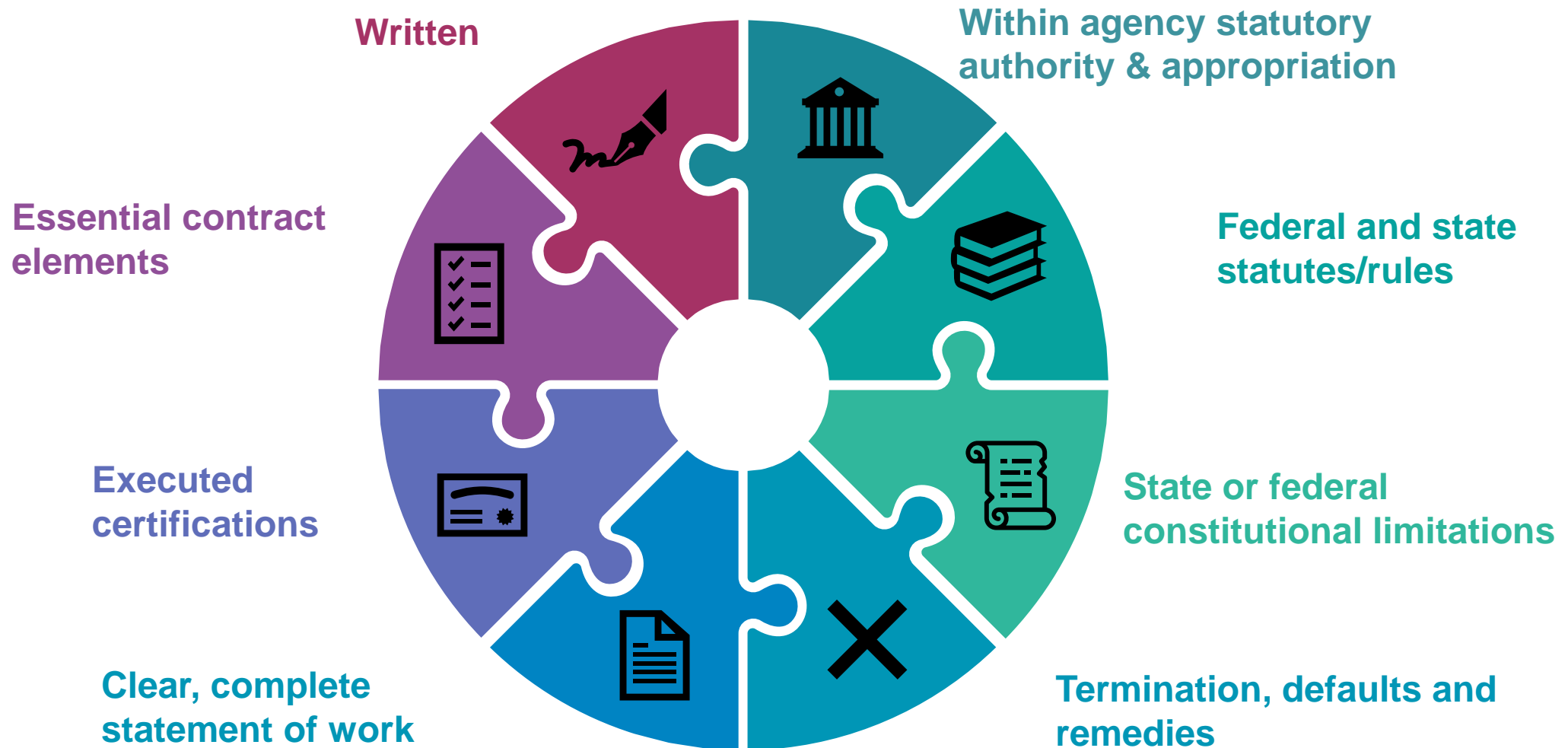
---

Provides legal trainings, tools and resources to agencies, boards and commissions

# Legal Advice to Client Agencies



# Legal Sufficiency Review





# POP 350 – Legal Training for Oregon State Government

- Client Legal Training Manager – existing position – LD to Perm.
- Monitors and analyzes impact of new state and federal legislation on state legal practices.
- Analyzes impact of law changes, administrative rule changes and court case decisions.
- Consults with DOJ attorneys to develop and prepares effective training methods and materials for state managers and employees – Public Law Conference.
- Identifies external trainers and designs education projects.

# General Counsel - Policy Packages

		<u>Agency Request Budget</u>	<u>Governor's Budget</u>
• Package 093 –	Statewide Adjustment DAS Charges	\$ - 0 -	(\$162,008) OF
• Package 100 -	Reconcile Intra-Agency Charges	\$1.3M OF	\$0.5M OF
• Package 101 –	Hardware Lifecycle Replacement	\$63,400 OF	\$63,400 OF
• Package 251 –	Compliance With State Labor Agreement	(\$11,977) OF	(\$11,977) OF
• Package 350 –	Legal Training for Oregon State Government	\$387,359 OF	\$387,359 OF

# 15% Budget Reduction Options - OF

<b>General Counsel Division Reduction Options</b>			
	5%	10%	15%
Personal Services Reduction	\$ 4,210,488	\$ 4,210,976	\$ 4,222,877
FTE Reduction	13.15	13.10	11.95

# Crime Victim and Survivor Services Division

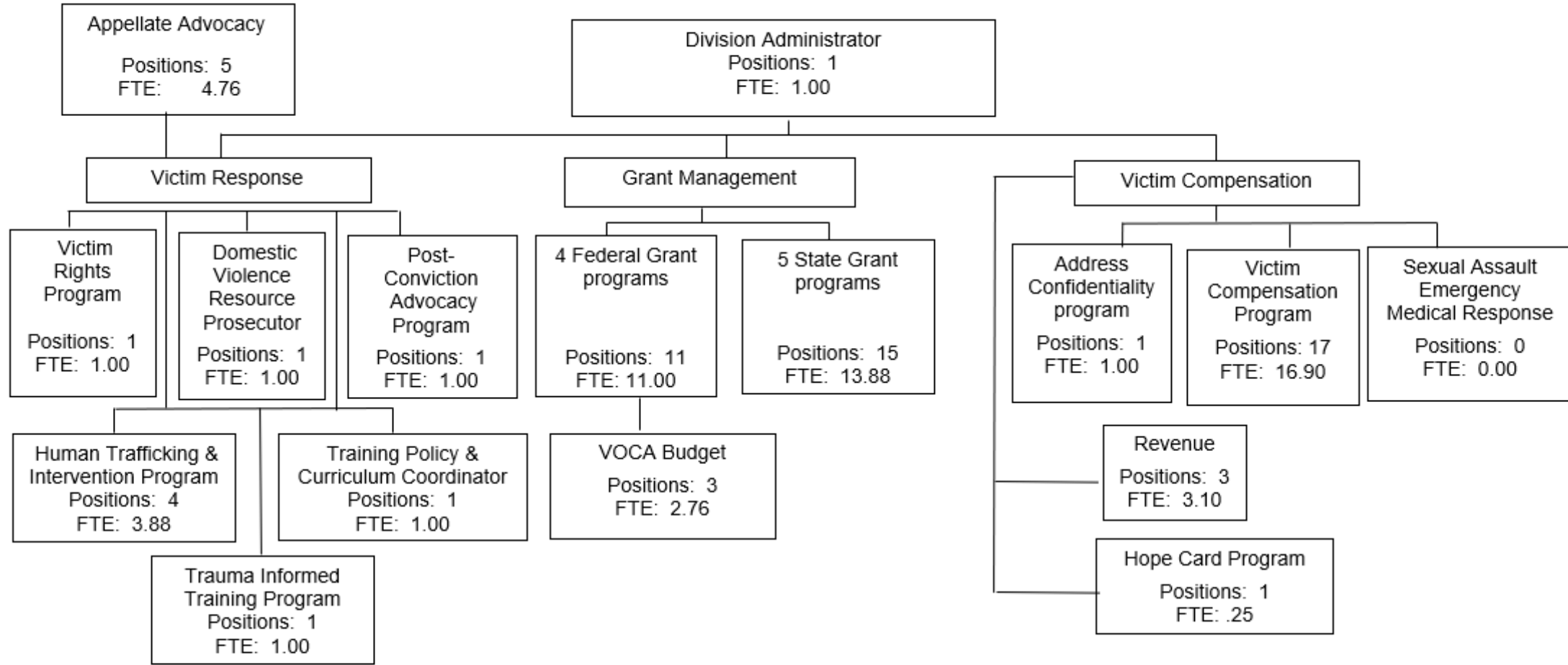
**Oregon Department of Justice**

Ellen F. Rosenblum, Attorney General

**Department of Justice:** Administrative Services Division



## Crime Victim and Survivor Services Division



2021-23 Legislatively Approved Budget	
Positions	52
FTE	48.06

2023-25 Agency Request Budget	
Positions	66
FTE	63.53

Change to 2021-23 Legislatively Approved Budget	
Positions	14
FTE	15.47

# Direct Services for Victims

- Crime Victims' Compensation
- Civil Rights Unit
  - Bias Response Hotline
  - Sanctuary Promise Hotline
- Victims' Rights Program
- SAVE Program
- Appellate Advocacy Program
- Address Confidentiality Program
- Hope Card Program

# Crime Victims' Compensation Program

## Financial compensation to victims of violent crime

- Medical and counseling services
- Loss of Earnings and Loss of Support
- Funeral costs
- Transportation and rehabilitation
- Child Abuse Medical Assessments
- Sexual Assault exams

# Civil Rights Unit

## Hate and Bias Response Hotline

- 7001 calls through January 23, 2023
- 3707 reports of bias/hate

## Sanctuary Promise Hotline

- 36 reports through January 23, 2023

## Emergency Fund

- 59 victims and families served



# Statewide Victim Support Programs

- **Victims' Rights Program**
- **Domestic Violence Resource Prosecutor**
- **Human Trafficking Intervention Program**

# Grant Management

## Ongoing Grants

- 5 Federal
- 5 State

## One-Time Grants

- 2 Federal
- 5 State

# Federal Grants

- **Victim of Crime Act Grants (VOCA)**
  - **226** grants, \$57.35 million awarded
- **Violence Against Women Act Grants (VAWA)**
  - **55** grants, \$4.07 million awarded
- **Sexual Assault Services Program (SASP)**
  - **6** grants, \$1.02 million awarded
- **Children's Justice Act Grant (CJA)**
  - **1** grant, \$ 400,000
- **John R. Justice**
  - \$35,000

# State Grants

- **District Attorney Victim Assistance Programs**
  - **39 Grants: \$5.64 million**
- **Child Abuse Multi-Disciplinary Intervention Programs**
  - **36 Multidisciplinary Team (MDT) Grants: \$12 million**
  - **6 Regional Children's Advocacy Center (RCAC) Grants: \$1.4 million**
- **Oregon Domestic and Sexual Violence Services (GF)**
  - **56 grants: \$10.9 million**
- **Discretionary State Grant(s)**
  - **Sexual Assault Task Force (SATF: \$500,000)**
- **Trauma Informed Response Training Grants**
  - **Available to law enforcement agencies/government entities: \$600,000/biennium**

# District Attorney Victim Assistance Program Grants

- **39 Grants: \$5.64 million allocated in 2021-2023**
  - Crisis intervention services
  - Information and referral
  - Court accompaniment
  - System advocacy

# Child Abuse Multidisciplinary Intervention (CAMI) Grants

**36 Multidisciplinary Team (MDT) Grants:**

**\$12 million granted in 2021-2023**

**6 Regional Children's Advocacy Center (RCAC) Grants:**

**\$1.4 million granted in 2021-2023**

## **Services provided:**

- Coordinated investigation of child abuse
- Child-sensitive investigations, exams, interviews
- Statewide training for professionals conducting child-abuse assessments

# Oregon Domestic and Sexual Violence Services Fund (GF)

**56 grants totaling \$10.9 million for 2021-2023**

**Services include:** shelter services, safety planning, 24-hour hotline, advocacy, information and referral

# Discretionary State Grant

## Sexual Assault Task Force

The mission of the SATF is the effective prevention and response to sexual violence through collaborative, comprehensive, survivor-centered strategies. Each biennium CVSSD grants SATF \$500,000 to sustain statewide training efforts. SATF programs include:

- Sexual Assault Training Institute
- Sexual Assault Nurse Examiner Program
- Campus Reporting Options website



# One-time Grant Funds

- **Child Abuse Center Funds (GF)**
  - \$6 million, 24 grants
- **CASA funds (GF)**
  - \$2.75 million, 19 sub-awards
- **DV/SA Community-based Non-profit Funds (GF)**
  - \$10 million, 57 grants
- **Replacement Grant Funds (GF)**
  - \$11.75 million, 159 grants
- **Survivor Housing Funds (GF)**
  - \$5million, 58 grants
- **ARPA Community Violence Intervention & Prevention**
  - \$15 million
- **American Rescue Plan Act (ARPA) Housing**
  - \$1.25 million

# DV/SA Community-Based Non-Profits

**\$10 million, 57 grants**

- Shelter upgrades and repairs
- Investment in new shelter location and infrastructure
- Expand services beyond crisis line advocacy
- Increase wages for staff
- Offer differential pay for bilingual staff
- Additional staff training and support
- Administrative support

# Child Abuse Center Funds

**\$6 million, 24 grants**

- Expand and maintain critical services to child victims by retaining or recruiting staff
- Adding bilingual staff
- Purchasing medical equipment necessary to conduct medical examinations
- Facility repairs and expansions

# Survivor Housing Fund (GF)

**58 grants totaling \$5 million for 2021-2023**

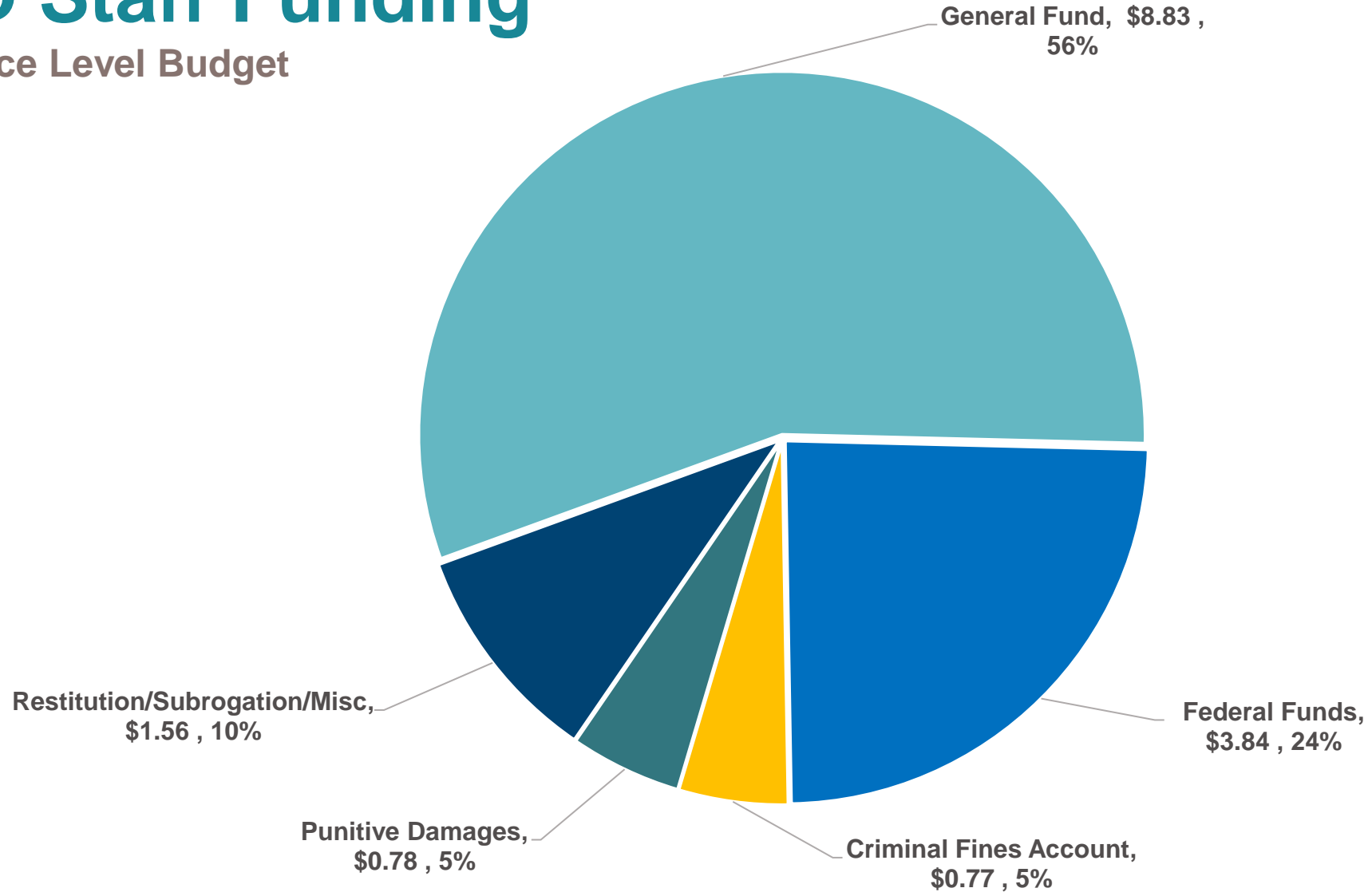
**Services include:** housing stabilization assistance; advocacy and assistance maintaining and accessing safe permanent housing.

# Replacement General Funds

- **\$11.25 million for 2021-2023**
- **159 grants**
- **Replacement funding to offset VOCA losses**
- **Funds to: government-based victim advocate programs, child advocacy centers, non-profit domestic violence/sexual assault organizations**
- **Services include: crisis intervention, information & referral, personal advocacy/accompaniment, safety services, etc.**

# CVSSD Staff Funding

Current Service Level Budget  
\$ Millions



# Policy Packages

		<u>Agency Request Budget</u>	<u>Governor's Budget</u>	
• Package 090 –	DAS Analyst Adjustments	\$ - 0 -	(\$589,139)	GF
• Package 091 –	Additional Analyst Adjustments	\$ - 0 -	(\$83,856)	GF
• Package 092 –	Statewide AG Adjustment	\$ - 0 -	(\$424)	GF
			(\$18,664)	OF
• Package 093 –	Statewide Adjustment DAS Charges	\$ - 0 -	(\$27,102)	GF
			(\$5,939)	OF
			(\$7,332)	FF

# Policy Packages

		<u>Agency Request Budget</u>	<u>Governor's Budget</u>
• Package 100 –	Reconcile Intra-Agency Charges	\$137,526 GF \$ 11,959 OF	\$96,268 GF \$ 8,371 FF
• Package 101 –	Hardware Lifecycle Replacement	\$ 14,270 GF	\$14,270 GF
• Package 104 –	Budget Shift: Civil Rights Unit	\$2.6M GF	\$ 2.6M GF
• Package 251 –	Compliance With State Labor Agreement	(\$ 14,431) GF (\$ 2,872) OF	(\$14,431) GF (\$ 2,872) OF



# Policy Packages

		<u>Agency Request</u> <u>Budget</u>	<u>Governor's Budget</u>
• Package 301 –	Victims of Crime Act Budget – Federal Grant	\$44.8M FF	\$44.8M FF
• Package 302 –	Human Trafficking Intervention Grant	\$1.1M FF	\$1.1M FF
• Package 303 –	Bias Response Hotline Advocate	\$.2M OF	\$ .2M OF
• Package 305 –	Community Based Violence Prevention	\$.88M GF	\$.88M GF
• Package 306 –	Serving Persons Experiencing Trauma	\$76,013 GF	\$ - 0 -

# Policy Packages

		<u>Agency Request Budget</u>	<u>Governor's Budget</u>
• Package 307 –	Appellate Advocacy	\$.49M GF	\$ - 0 -
• Package 308 –	Domestic & Sexual Violence Services	\$10.0M GF	\$ - 0 -
• Package 309 –	Child Advocacy	\$6.0M GF	\$ - 0 -
• Package 310 –	Position Realignment	\$.38M GF (\$ .36M FF)	\$ - 0 - \$ - 0 -

# 15% Budget Reduction Options - GF

<b>CVSSD - General Fund Reduction Options</b>			
	<b>5%</b>	<b>10%</b>	<b>15%</b>
CVC - Hope Card Program	\$ 39,910		
CVC - Collections	\$ 29,777		
CVC - Collections	\$ 154,381		
CVC - Comp	\$ 212,176		
CVA - ODSVS Special Payments	\$ 535,838	\$ 742,713	\$ 498,702
CVA - CAMI Special Payments		\$ 151,093	\$ 135,984
CVA - Trauma Training Special Payments		\$ 62,588	\$ 56,329
CVA - Assist Special Payments		\$ 15,160	\$ -
CVA - OCVLC Special Payments		\$ 37,218	\$ 334,961
CVC - SAVE Special Payments		\$ 46,955	\$ 42,259
<b>Total Reductions</b>	<b>\$ 972,082</b>	<b>\$ 1,055,727</b>	<b>\$ 1,068,235</b>

# 15% Budget Reduction Options - OF

<b>CVSSD - Other Funds Reduction Options</b>			
	<b>5%</b>	<b>10%</b>	<b>15%</b>
CVC - Comp CFA Special Payments	\$ 248,963	\$ 248,963	\$ 248,963
CVA - Assist CFA	\$ 303,644	\$ 303,644	\$ 303,644
CVA - CAMI Speical Payments	\$ 610,544	\$ 610,544	\$ 610,544
CVA - CAMI Regional Centers	\$ 46,025	\$ 46,025	\$ 46,025
CVC - Comp Puni Special Payments	\$ 214,658	\$ 214,658	\$ 214,658
CVC - SAVE Special Payments	\$ 1,476	\$ 1,476	\$ 1,476
CVA - ODSVS Speical Payments	\$ 10,583	\$ 10,583	\$ 10,583
CVA - Puni	\$ 33,043	\$ 33,043	\$ 33,043
<b>Total Reductions</b>	<b>\$ 1,468,935</b>	<b>\$ 1,468,935</b>	<b>\$ 1,468,935</b>

# 15% Budget Reduction Options - FF

<b>CVSSD - Federal Funds Reduction Options</b>			
	<b>5%</b>	<b>10%</b>	<b>15%</b>
CVA - VOCA Special Payments	\$ 601,254	\$ 1,089,255	\$ 1,089,255
CVA - VAWA Special Payments	\$ 209,182	\$ -	\$ -
CVC - VOCA Special Payments	\$ 108,351	\$ -	\$ -
CVC - SAVE Special Payments	\$ 170,468	\$ -	\$ -
<b>Total Reductions</b>	<b>\$ 1,089,255</b>	<b>\$ 1,089,255</b>	<b>\$ 1,089,255</b>

# Division of Child Support

**Oregon Department of Justice**

Ellen F. Rosenblum, Attorney General

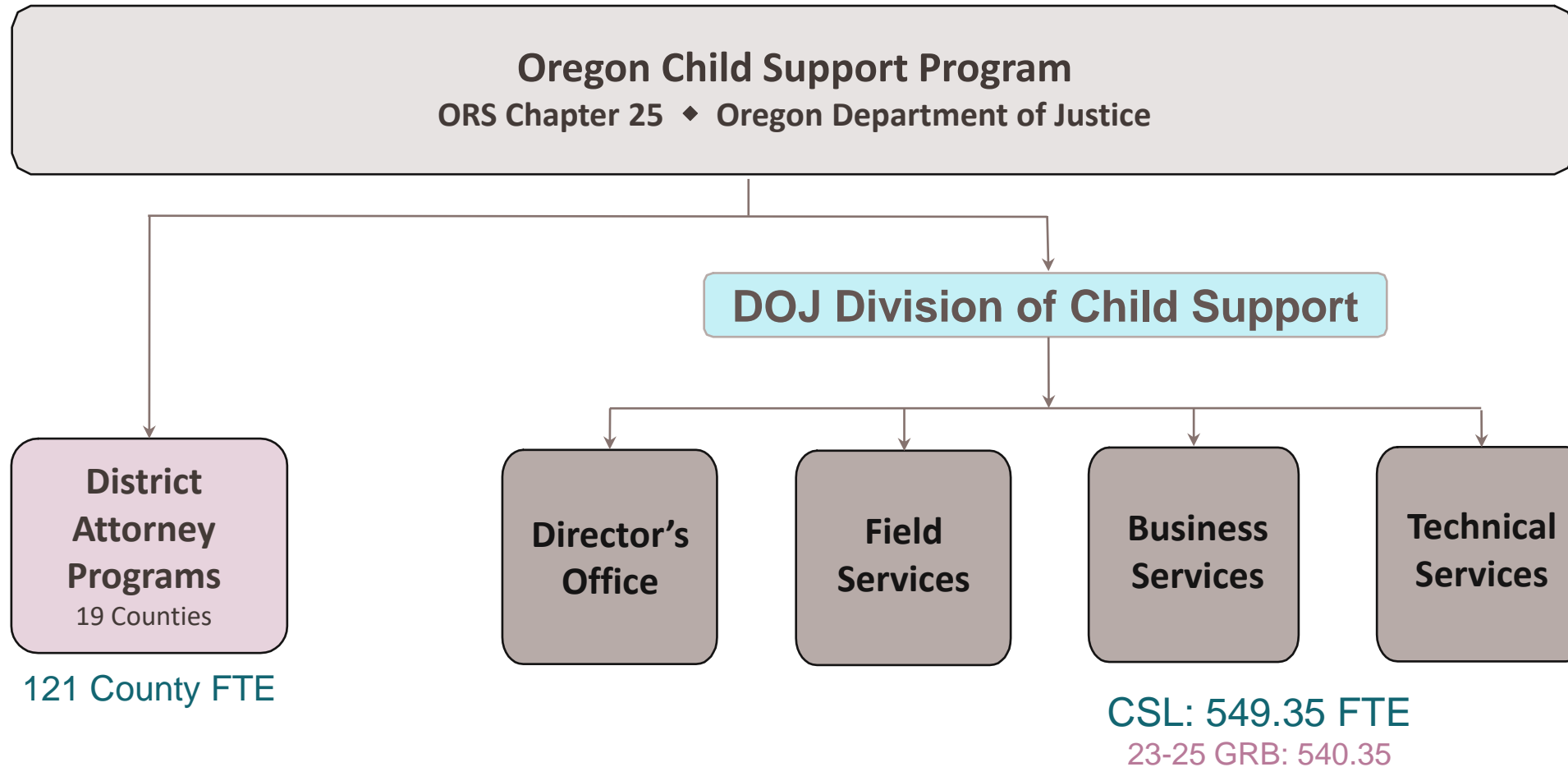
**Department of Justice: Division of Child Support**



**What we're about:**

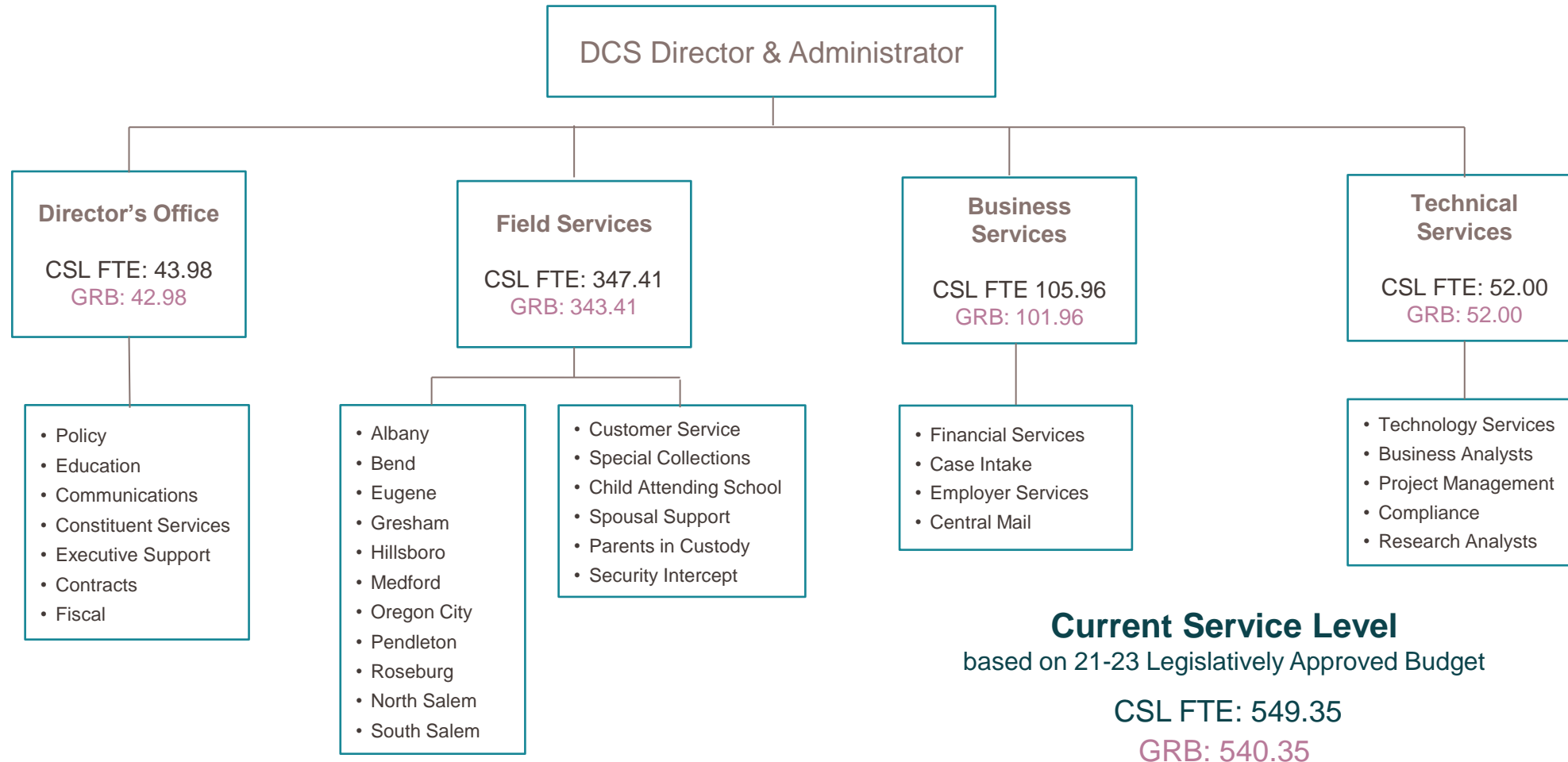
**Supporting parents  
to  
support children**

# Oregon's Federal Title IV-D Program





# DOJ Division of Child Support



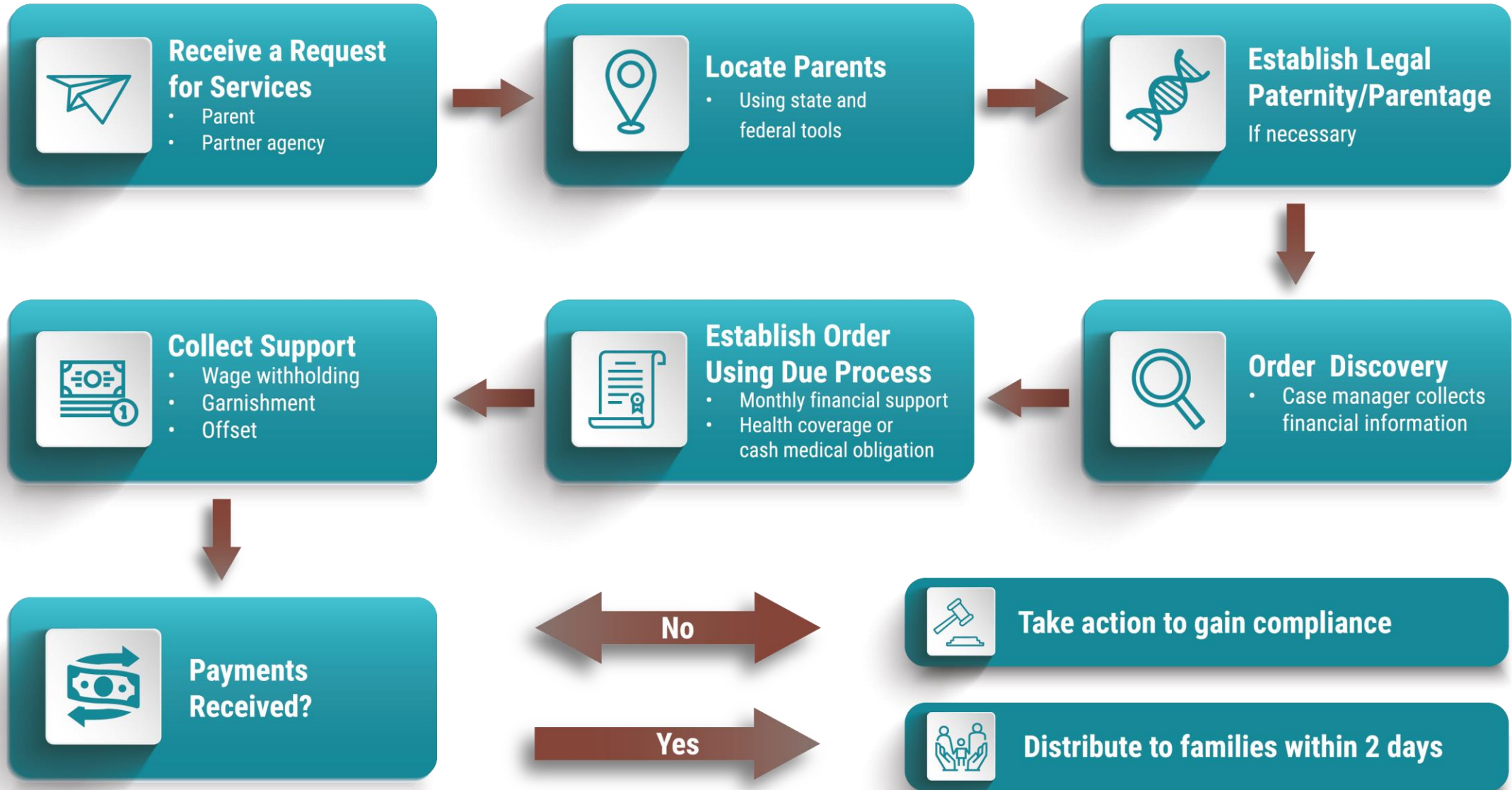
# Who we serve

- **Oregon's program provides services for all families**
- who are currently or were formerly receiving Temporary Assistance for Needy Families (TANF) or Medicaid
- who have never received public assistance and enroll directly in child support services
- in rare circumstances when a child is in the care and custody of the state through the Child Welfare system
  - **There is no "means test" for services**

# What we do

- Find parents and assets
- Establish paternity/parentage
- Establish child and medical support orders
- Ensure compliance with orders
- Collect payments
- Modify and adjust child support orders
- Manage accounting and recordkeeping
- Receive and distribute collections

# The Life of a Case

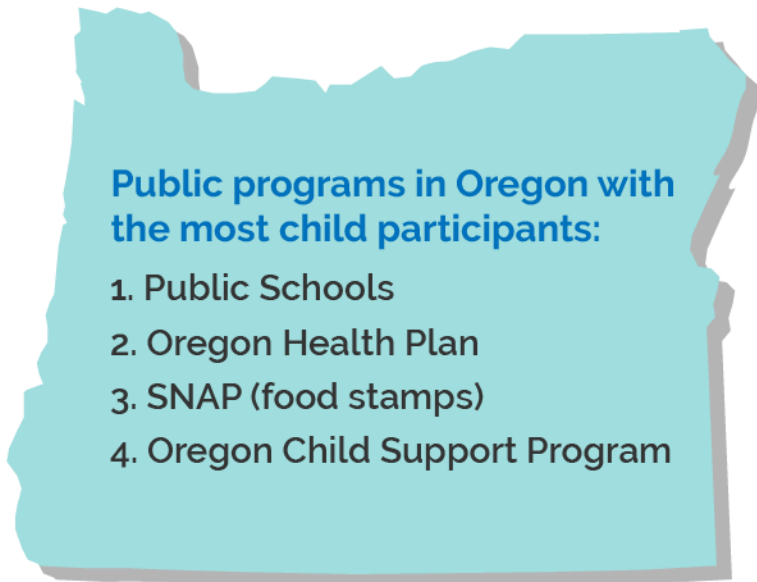
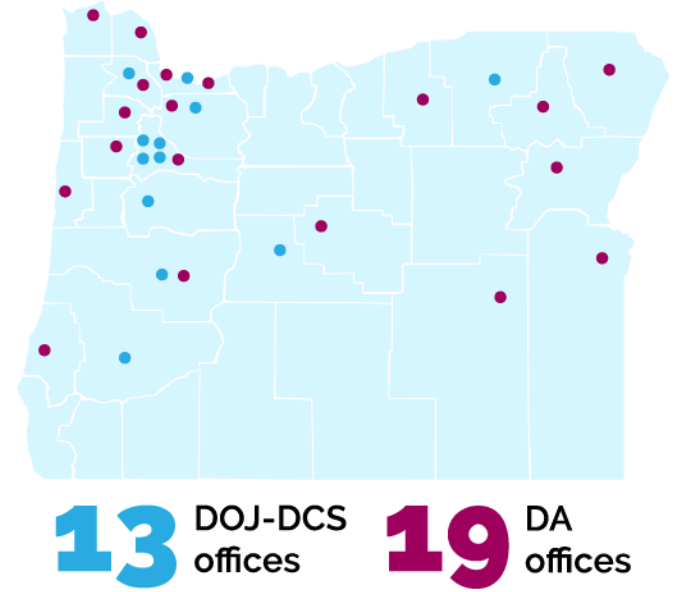


# Compliance & Collection

## Some of the proverbial “tools in the toolbox”

- Income withholding and mandated new hire reporting
- Employer health insurance or cash medical
- Unemployment and workers compensation withholding
- Interception of federal disbursements, state/federal tax refunds, lottery winnings
- Compliance agreements
- Bank data matches and garnishments
- License restriction (occupational, recreational, driver, etc.)
- Federally mandated passport restriction
- Liens on property and money awards

# CHILD SUPPORT BY THE NUMBERS



**140,735**  
Child Support Cases

**138,304**  
Children 21 & younger

**136,430**  
Children 18 & younger

**20**  
PERCENT  
of children  
**18**  
and  
younger

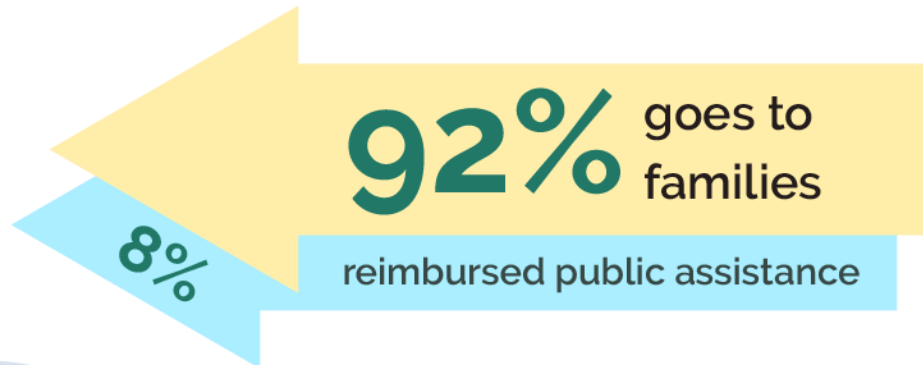
# CHILD SUPPORT

BY THE NUMBERS

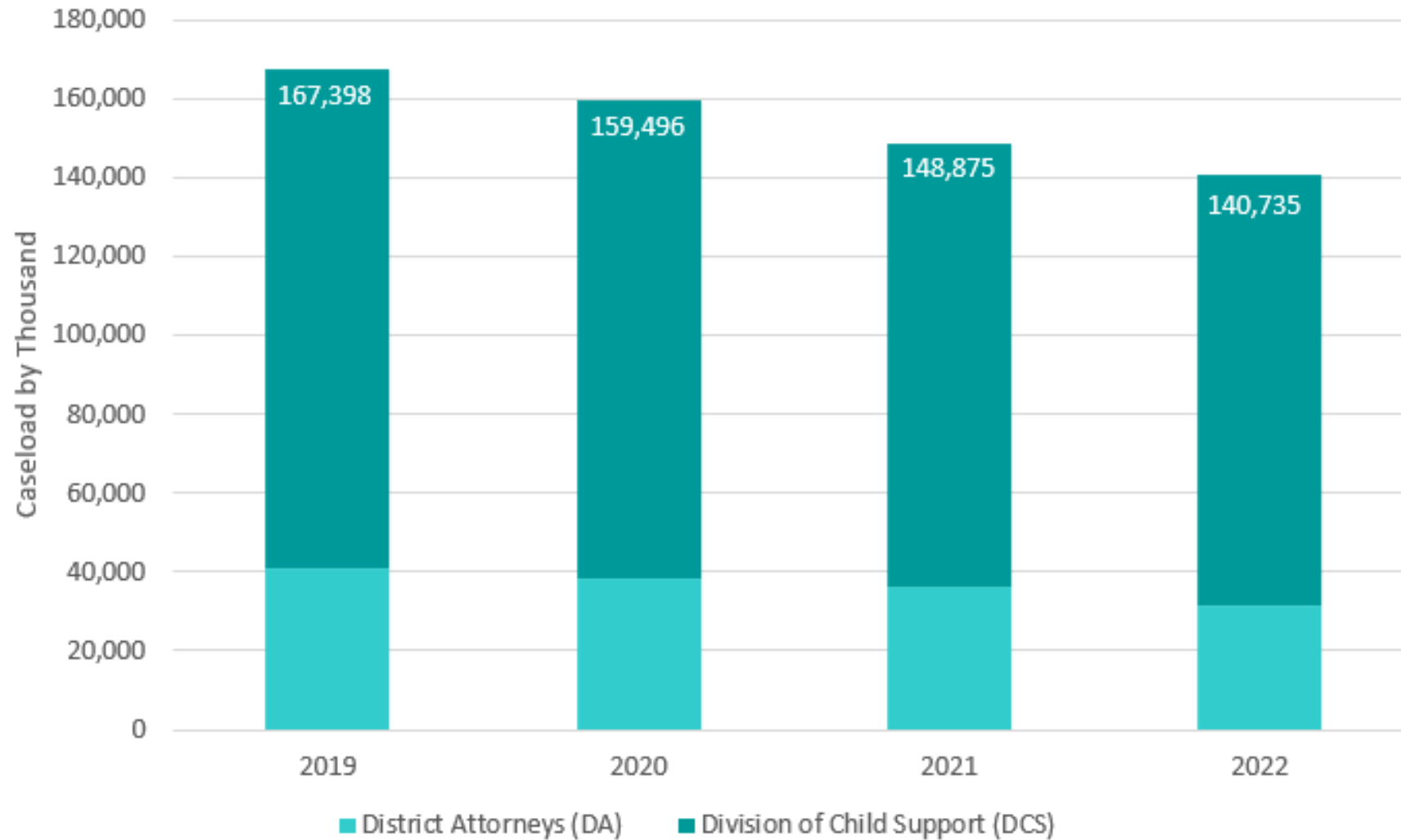
**\$318.8** million annual collections

**\$1.2** million processed daily

**71%** collected through income withholding



# Program Caseload





# Flexible, Adaptable, Responsive

**Economic ♦ Equity ♦ Pandemic ♦ Wildfire ♦ Whole Family Approach**

## **Customer service**

- Expanded hours, staff for Customer Service (phone, online)
- Emails with time-sensitive messages and to promote online account
- Website announcements, frequently updated topical FAQs

## **Policy and practice responsive changes to changing environments**

- New system allows nimble change requests for consistent approach
- Family-first distribution of stimulus payment offsets
- Hardship request process
- Raised garnishment threshold
- License suspension, credit reporting, contempt adjustments
- Adaptations to changes in unemployment compensation
- Paternity practice changes – DNA tests, Vital Records, hospitals
- Partnership with OJD to leverage federal funds for child support referee “problem-solving court”

# Flexible, Adaptable, Responsive

**Economic ♦ Equity ♦ Pandemic ♦ Wildfire ♦ Whole Family Approach**

## **Workforce and workplace changes**

- Formerly brick-and-mortar operations
- Quickly moved 80% of staff out of 14 buildings statewide, full or part time
- Flexible in-office coordination of schedules and tasks
- Soft phones
- Hybrid work schedules to meet needs of case participants

## **Family-focused strategic planning**

- Proactive review and modification for changing family circumstances
- Commissioned economic study by national expert on child support with emphasis on low-income families
- Evaluation of child support guidelines parameters to include parents with lived experience
- Use of data analytics to evaluate equity and procedural justice within child support system
- Strategic planning to leverage federal support for employment training and fatherhood programs
- Expanded community outreach—meeting parents where they are

# Leveraged Funds

**Investing state funds in the Oregon Child Support Program yields a high return on investment.**

- Every **\$1 of state general funds** spent on child support is matched by **\$2 of federal funds**
- In FFY 2022, the Oregon Child Support Program collected \$345 million, including **\$292 million for families**
  - reducing the need for public assistance
  - helping lift families out of poverty
  - avoiding additional costs for taxpayers
- In FFY 2022, the Oregon Child Support Program collected **\$26.1 million for non-IV-D cases, other states, and other countries.**
- In FFY 2022, the Oregon Child Support Program recouped **\$26.5 million for state agencies**

# Policy Packages

		Agency Request Budget	Governor's Recommended Budget
Package 070	Revenue Shortfall	(\$20,639) FF	(\$20,639) FF
Package 090	Analyst Adjustments	\$ - 0 -	(\$2,411,845) GF
Package 091	Additional Analyst Adjustments	\$ - 0 -	(\$683,784) GF
Package 092	Attorney General Charges Adjustment	\$ - 0 - \$ - 0 - \$ - 0 -	(\$103,780) GF (\$51,823) OF (\$285,911) FF
Package 093	Statewide DAS Service Adjustment (SGSC)	\$ - 0 - \$ - 0 - \$ - 0 -	(\$139,310) GF (\$31,744) OF (\$332,448) FF
Package 100	Reconcile Intra-Agency Charges	\$462,568 \$897,926	\$323,799 GF \$628,551 FF

# Policy Packages

		Agency Request Budget	Governor's Recommended Budget
Package 101	Hardware Lifecycle Replacement	\$59,235 GF \$114,985 FF	\$59,235 GF \$114,985 FF
Package 251	Compliance with State Labor Agreement	(\$131,342) GF (\$26,141) FF	(\$131,342) GF (\$26,141) FF
Package 471	Origin Operations and Maintenance	\$2,304,865 GF \$4,474,149 FF	\$ - 0 - \$ - 0 -
Package 472	Origin Framework Refactoring	\$2,529,600 GF \$4,910,400 FF	\$2,529,600 GF \$4,910,400 FF
Package 473	Origin Hosting and Software Licensing	\$749,450 GF \$1,454,815 FF	\$749,450 GF \$1,454,815 FF
Package 474	Funding for ODAA Liaison	\$59,840 GF \$116,160 FF	\$ - 0 - \$ - 0 -

# 15% Budget Reductions

<b>Division of Child Support</b>						
<b>Reduction %</b>	<b>General Fund</b>	<b>Other Funds</b>	<b>Federal Funds</b>	<b>Total Funds</b>	<b>Positions</b>	<b>FTE</b>
5%	\$ (2,601,391)	\$ (1,197,577)	\$ (6,998,901)	\$ (10,797,869)	(36)	(36.98)
5%	\$ (2,601,390)	\$ (1,197,578)	\$ (6,998,901)	\$ (10,797,869)	(34)	(34.50)
5%	\$ (2,601,391)	\$ (1,197,577)	\$ (6,998,902)	\$ (10,797,870)	(35)	(35.00)

# Reduction Impact

**A 15% GF reduction would result in drastic program impacts, directly impacting families**

Loss of 105 positions throughout the Division of Child Support

Loss of 66% federal funds match for general fund – additional **\$15.1 million**

## Cascading Effect

- Child support collections reduced by **\$87.7 million** per biennium
- Other agency collections reduced by **\$1 million** per biennium
- Recoupments used for operations would be reduced by \$3.3 million per biennium, reducing matching federal funds by \$6.4 million, for an additional loss of **\$9.7 million**

## Families Suffer

- Caseload per FTE would increase by 24%
- Modifications and order establishments decline by 19.6% each