

Oregon Board of Chiropractic Examiners



2023-25 Governor's Budget

Agency Reference Materials

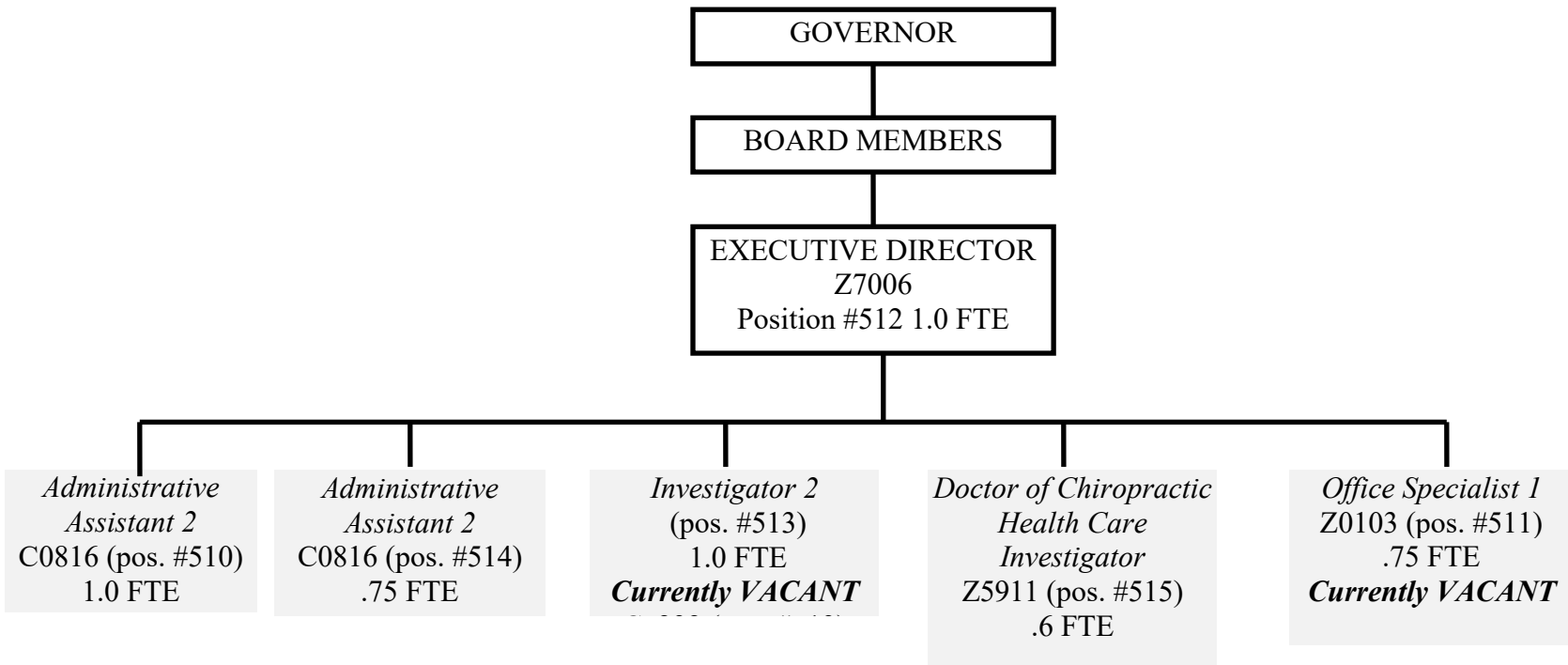
OBCE 2019-21 Mission, Vision, and Values

The business we are in	<p style="text-align: center;">Agency Mission:</p> <p style="text-align: center;">The mission of the Oregon Board of Chiropractic Examiners is to protect the public by regulating the practice of chiropractic. (2019)</p>
What we want to be known for	<p style="text-align: center;">Vision</p> <p>To protect the health, safety, and welfare of the public in all matters of chiropractic care by setting a national standard in educating, licensing, and regulating our licensees.</p>
What beliefs guide our actions	<p style="text-align: center;">Values</p> <ol style="list-style-type: none">1. Integrity – a commitment to acting honestly, ethically, and fairly.2. Accountability – a willingness to accept responsibility for actions in a transparent manner.3. Excellence – an expectation of the highest quality work and innovation.4. Professionalism – a dedication to provide equitable, caring service to all Oregonians with compassion and respect.5. Equity – create and foster a consistent environment where everyone has access and opportunity to thrive.

BUDGET NARRATIVE

ORGANIZATION CHART Oregon Board of Chiropractic Examiners

2021-2023



___ Agency Request

___ Governor's Recommended

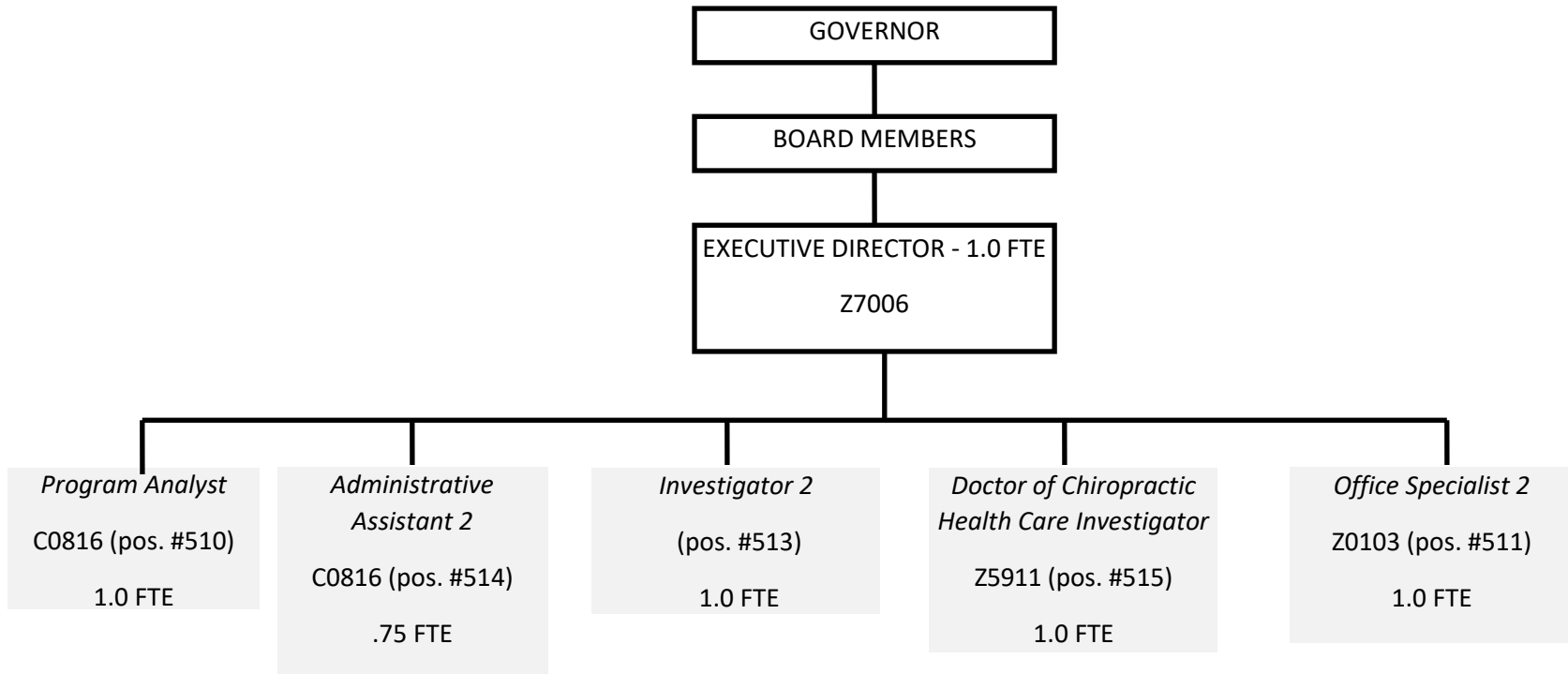
X Legislatively Adopted

Budget Page ___

BUDGET NARRATIVE

ORGANIZATION CHART Oregon Board of Chiropractic Examiners

2023-25 Proposed



___ Agency Request

X Governor's Recommended

___ Legislatively Adopted

Budget Page ___

	9/1/2022	10/1/2022	11/1/2022	12/1/2022	1/1/2023	2/1/2023	3/1/2023	4/1/2023	5/1/2023
CHIROS	Using ACCESS Query "STATS DC 27 28 65 71"								
(Active) 27	1227	1228	1209	1210	1208	1211			
(Inactive) 28	252	256	223	224	220	218			
(Senior) 65	439	442	437	434	435	435			
(Initial) 71	63	63	66	69	74	79			
TOTALS (overall inc/dec)	1981	1989	1935	1937	1937	1943	0	0	0
CAs	Using ACCESS Query "STATS CCA Movement Proj"								
(Initial) 29	394	396	394	407	422	432			
(Renewing) 30	863	858	834	823	838	848			
TOTALS (overall inc/dec)	1257	1254	1228	1230	1260	1280	0	0	0
Eff 7/1/19, the stats will not include "expired" (dropped) or "non-renew" (licensee notifies b									

2022 - OBCE DC Race/Ethnicity Demographics

	0
African American	2
American Indian	2
Asian	105
Asian/White	2
Black/African American	14
Decline	1
Declined	1
Hispanic/Latino	51
Hispanic/Latino/Caucasian	1
Native American Indian	8
Native Hawaiian	1
Other	1
Other-Multiple	1
Pacific Islander	3
Pakistan	1
Russian	1
South American Native	1
Undetermined	509
Wh/Caucasian	1199

2022 - OBCE CA Race/Ethnicity Demographics

	Counts: 0
Am Indian/Alaska/Asian/White	Counts: 1
American Indian/Alaska Native	Counts: 1
American Indian/Hispanic	Counts: 1
Asian	Counts: 97
Asian/Black/African American	Counts: 1
Asian/Hispanic	Counts: 1
Asian/White	Counts: 2
Asian; Black/African American	Counts: 1
Asian; White	Counts: 1
Black/African American	Counts: 34
Black/African American; White/Ca	Counts: 1
Black/Ethiopian	Counts: 1
Black/White	Counts: 1
Declines	Counts: 1
Hispanic/Hawaiian	Counts: 1
Hispanic/Latino	Counts: 404
Hispanic/Latino; American Indian	Counts: 1
Hispanic/Latino; Caucasian	Counts: 1
Hispanic/Latino; White	Counts: 1
Hispanic/Latino; White/Caucasian	Counts: 2
Hispanic/Latino; White/Caucasian;	Counts: 1
Hispanic/Native American	Counts: 1
Iranian	Counts: 1

Mixed	Counts: 1
Multi	Counts: 1
Native American Indian	Counts: 31
Native American Indian; Black/Afr	Counts: 1
Native American Indian; Hispanic/	Counts: 1
Native American Indian; White	Counts: 1
Native Hawaiian	Counts: 7
Native Hawaiian/Other Pacific Isla	Counts: 1
Other	Counts: 2
Pacific Islander	Counts: 6
Pacific Islander; White	Counts: 1
Undetermined	Counts: 39
Wh/Caucasian	Counts: 1441
Wh/Caucasian; Hispanic/Latino; A	Counts: 1
Wh/Caucasian; Middle Eastern	Counts: 1
White	Counts: 1
White/African American	Counts: 1
White; American Indian	Counts: 1

2020 - OBCE DC Race/Ethnicity Demographics

	0
African American	1
American Indian	2
Asian	95
Black/African American	11
Hispanic/Latino	39
Native American Indian	8
Other	1
Pacific Islander	2
Pakistan	1
Russian	1
South American Native	1
Undetermined	534
Wh/Caucasian	1171

2020 - OBCE CA Race/Ethnicity Demographics

	Counts: 0
Asian	Counts: 77
Asian/Black/African American	Counts: 1
Asian/Hispanic	Counts: 1
Black/African American	Counts: 34
Declines	Counts: 1
Hispanic/Hawaiian	Counts: 1
Hispanic/Latino	Counts: 311
Hispanic/Latino; Caucasian	Counts: 1
Hispanic/Native American	Counts: 1
Iranian	Counts: 1
Multi	Counts: 1
Native American Indian	Counts: 24
Native American Indian; Hispanic/	Counts: 1
Native Hawaiian	Counts: 5
Pacific Islander	Counts: 5
Undetermined	Counts: 41
Wh/Caucasian	Counts: 1166
Wh/Caucasian; Hispanic/Latino; A	Counts: 1

What's the health care workforce supply in Oregon?



The chart below shows the number health care professionals who are licensed to work in Oregon. Because not all licensees in Oregon are actively working in the health care field in Oregon, you can also view estimates of the number of licensees who are practicing in Oregon (“Practicing professionals”) and the estimated equivalent number of professionals practicing full-time in direct patient care (“Direct patient care FTE”). **These two estimates provide a more nuanced picture of the supply of health care workers providing patient care in Oregon.**

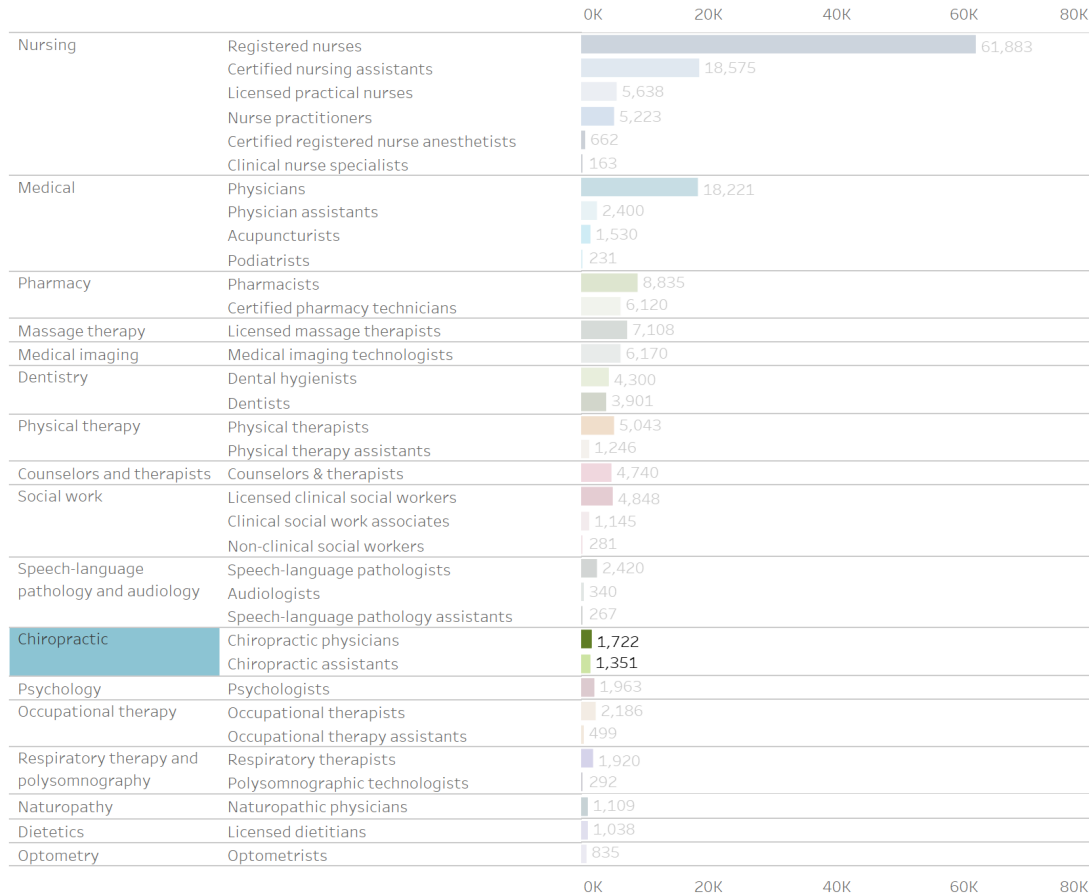
Select a measure to view workforce supply in three different ways:

- Licensed professionals: licensed to practice by an Oregon licensing board
- Practicing professionals: licensed professionals who are actively practicing in Oregon (estimated)
- Direct patient care FTE: full-time equivalency of practicing professionals in direct patient care (estimated)

Hover here to learn more about how these estimates are calculated.

Licensed professionals in Oregon by workforce and occupation in 2021

Hover over bars to view measures over time.



How does workforce supply for each occupation compare between counties and the state overall?

Select an occupation:
Chiropractic physicians

View supply estimates as a map or table:
 Map
 Table

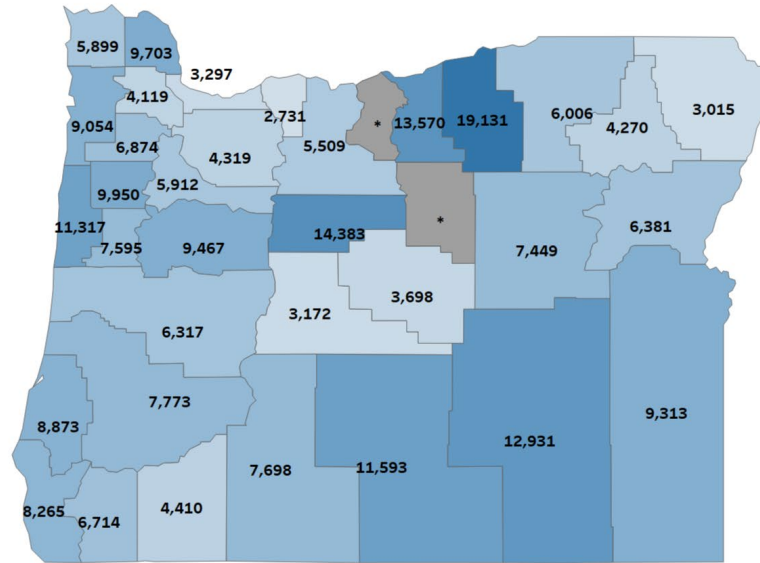
Hover here to learn more about how these estimates are calculated.

Population-to-provider ratio of chiropractic physicians in 2021

Ratio is based on the estimated direct patient care FTE in the county.



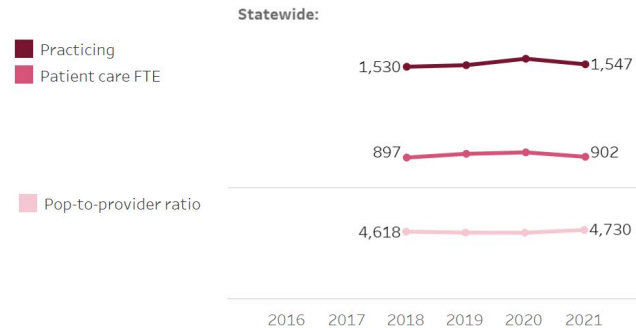
Lower numbers are better.
 The darker the blue, the higher the ratio. A higher ratio suggests less access to care for individuals living in a certain region. Gray indicates that no providers report a practice location in that county.
 Select one or more counties to display supply estimates below, hover over the map for more details:



© 2023 Mapbox © OpenStreetMap

Estimates over time for Chiropractic physicians:

Hover over the charts to view percent change over time.



Who is practicing in Oregon and what do their practices look like?

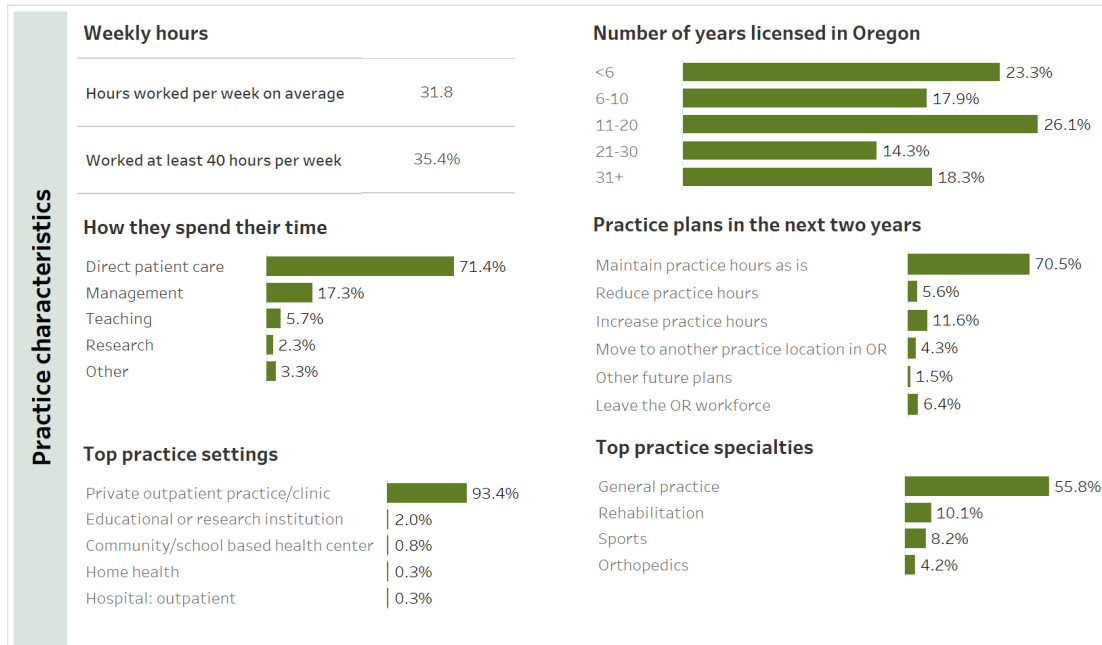
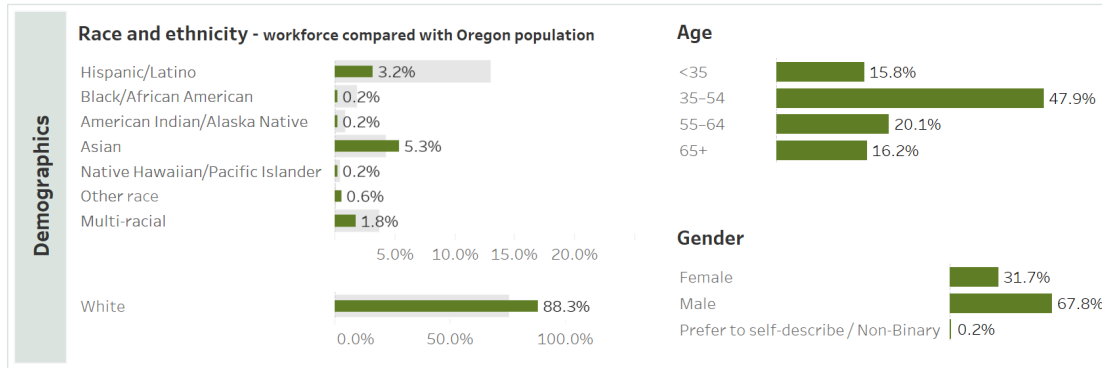


Select an occupation:
Chiropractic physicians

Select a year:
2021

Chiropractic physicians practicing in Oregon in 2021

Hover over the bars in the charts for more details.



How does workforce supply for each occupation compare between counties and the state overall?

Select an occupation:
Chiropractic assistants

View supply estimates as a map or table:
 Map
 Table

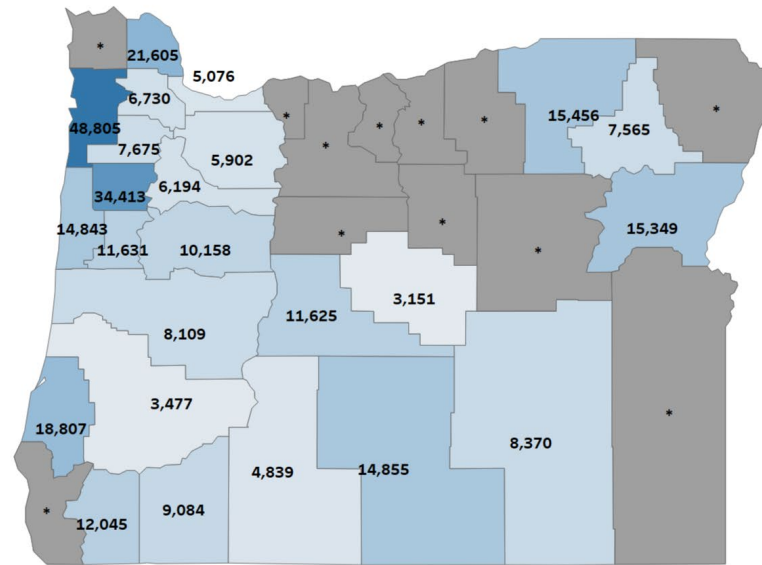
Hover here to learn more about how these estimates are calculated.

Population-to-provider ratio of chiropractic assistants in 2021

Ratio is based on the estimated direct patient care FTE in the county.



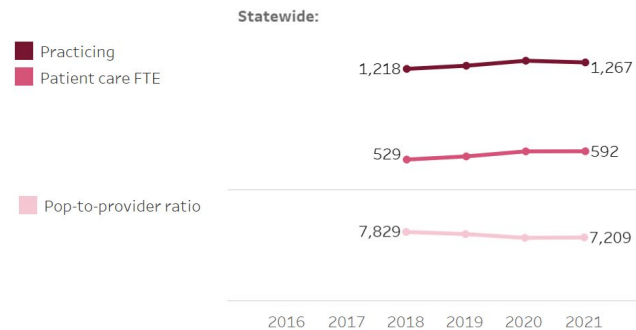
Lower numbers are better.
 The darker the blue, the higher the ratio. A higher ratio suggests less access to care for individuals living in a certain region. Gray indicates that no providers report a practice location in that county.
 Select one or more counties to display supply estimates below, hover over the map for more details:



© 2023 Mapbox © OpenStreetMap

Estimates over time for Chiropractic assistants:

Hover over the charts to view percent change over time.



Who is practicing in Oregon and what do their practices look like?



Select an occupation:
Chiropractic assistants

Select a year:
2021

Chiropractic assistants practicing in Oregon in 2021

Hover over the bars in the charts for more details.

