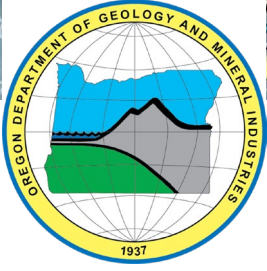


USGS STATEMAP Grant 2023

Oregon Department of Geology and Mineral Industries

January 26, 2023



DOGAMI Programs Delivers Science & Stewardship

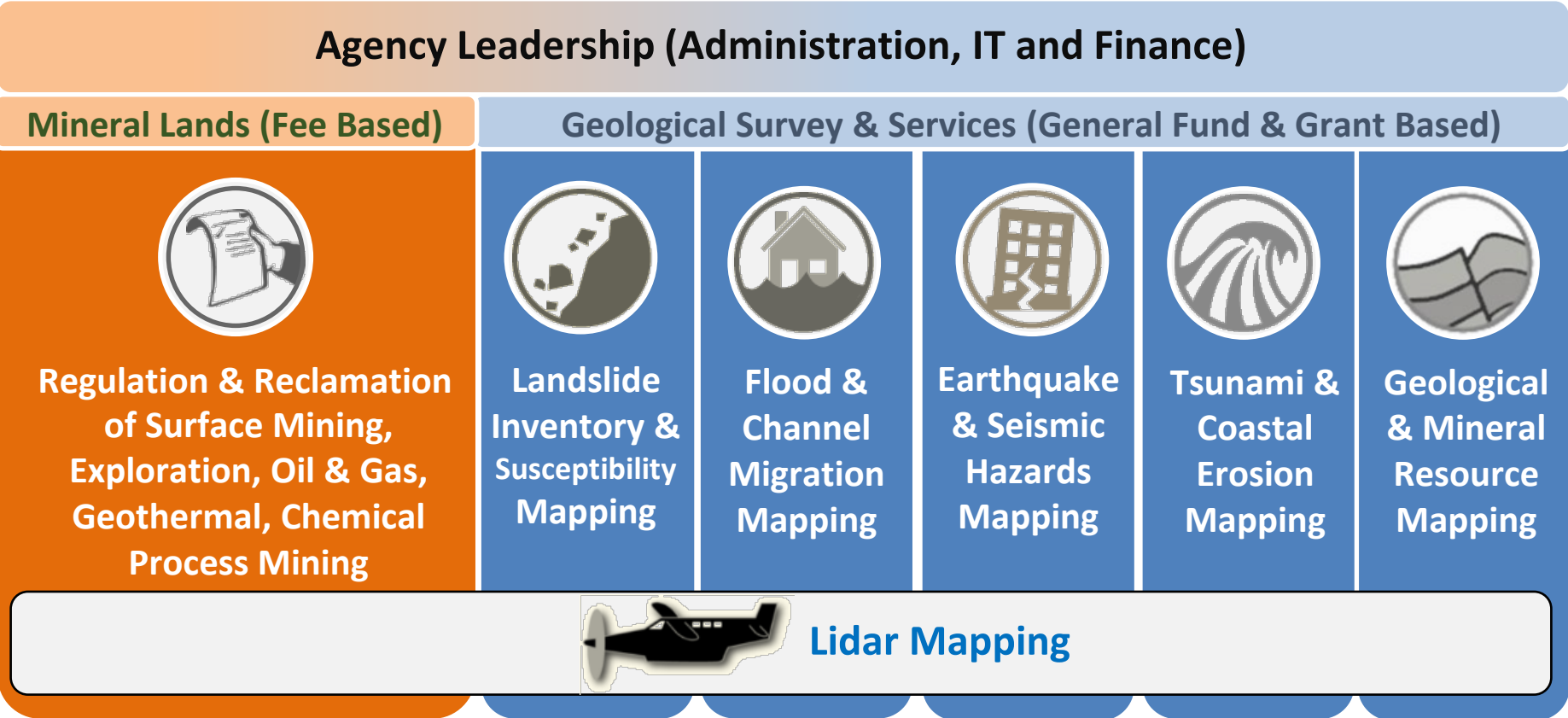
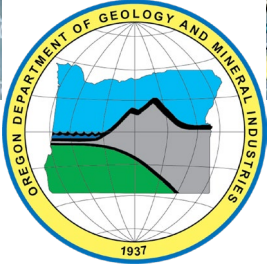


Image credits: Some images are derivatives of images created under a Creative Commons Attribution 3.0 Unported (CC BY 3.0) license, <http://creativecommons.org/licenses/by/3.0/>. The original icon images are attributed to Delapouite ("Falling rocks") and Lorc ("House," "Big wave") and the original versions can be found at <http://game-icons.net/>. Checklist image is derived from Microsoft clipart. Office building, Deb Schuller, DOGAMI; lidar aircraft is derived from Oregon Lidar Consortium logo, Jed Roberts, DOGAMI.



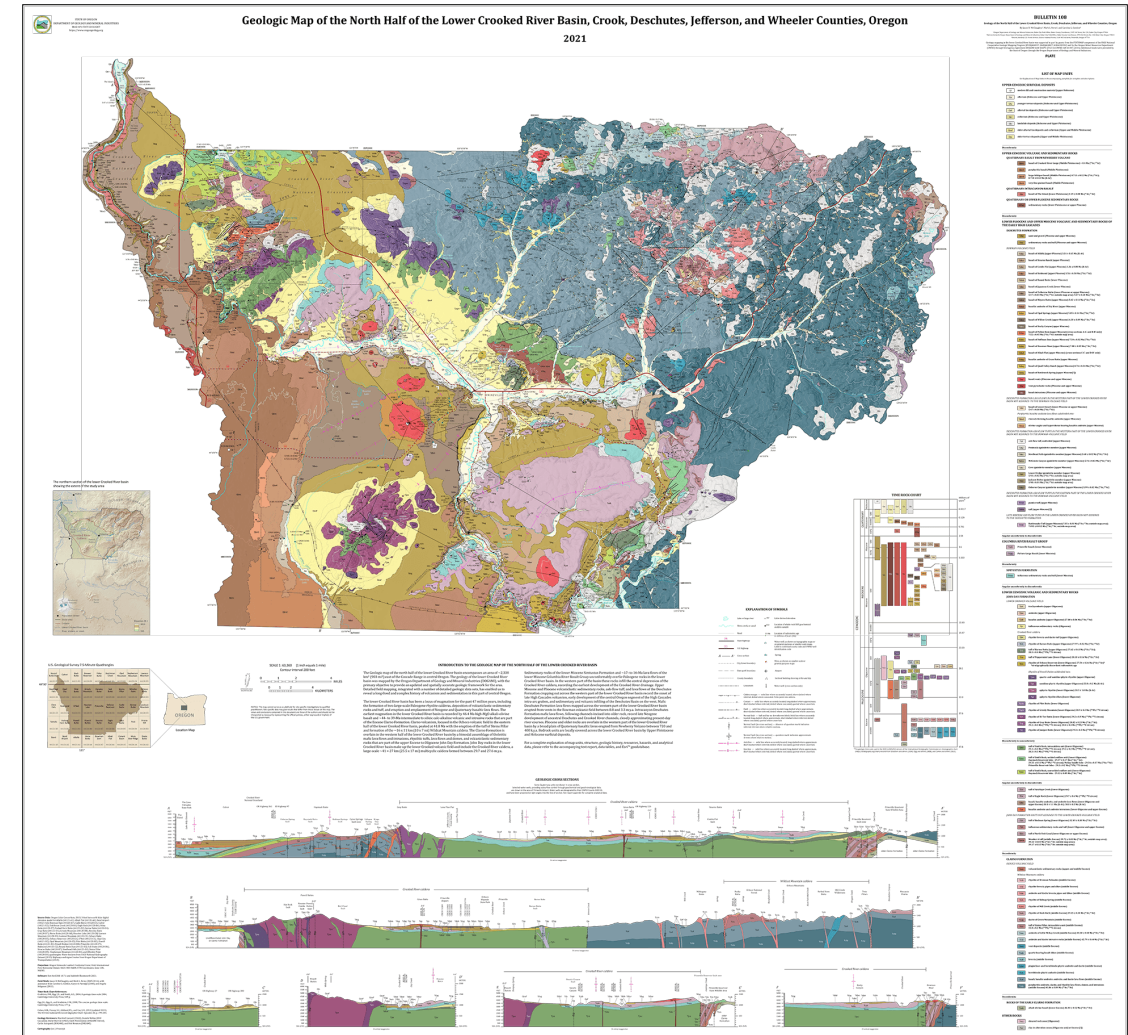
FY23 U.S. Geological Survey National Cooperative Geologic Mapping Program – STATEMAP GRANT

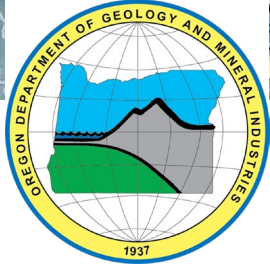
STATEMAP Program –

- 1992, Created by Congress. A coordinated program between the USGS/State Geological Surveys prioritizing mapping needs of the nation, to increase geologic map production.
- DOGAMI has applied/been awarded annually since 1992.
- To date Oregon has received \$4,879,921 in federal funds, partially supporting DOGAMI's geologic mapping program.

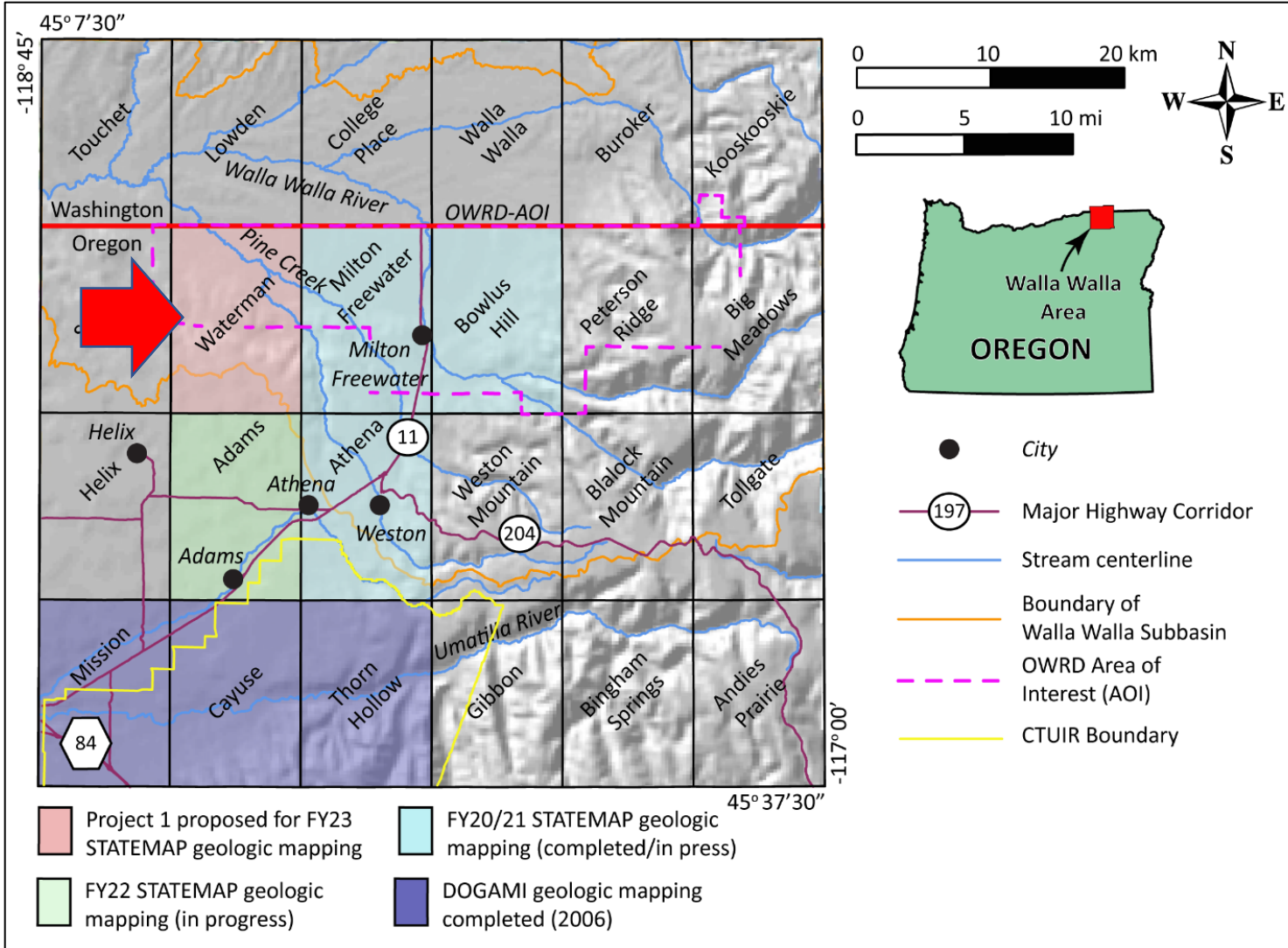
FY23 STATEMAP Program Request (cap for request \$500,000):

- Federal Funds \$499,995
- General Fund Match Request \$501,000
 - Includes \$219,354 from 2023 geophysical data
 - Net General Fund request \$281,646 (staff, services/supplies/contracts)
 - No new staffing needs for the FY23 STATEMAP Grant Request

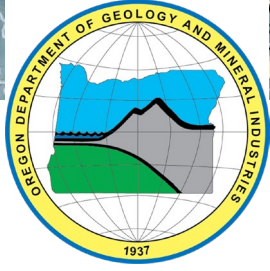




Project 1: Geologic Mapping in the Waterman 7.5' Quadrangle, Umatilla County



- Continues Geologic Mapping from FY20/21/22.
- OWRD and the USGS are actively studying aquifers in Walla Walla Basin in response to long-term groundwater level declines. Project is within OWRD's area of interest (AOI)-Waterman
- Working with USGS to map potentially active faults and characterize regional earthquake hazard.
- Overlaps with DOGAMI KPM-2 area
- Collaboration opportunities with OWRD, USGS, and the Confederated Tribes of the Umatilla Indian Reservation (CTUIR).



Project 2: Geologic Mapping in the Harney Basin, Harney County

- Six Harney Basin Quadrangles targeted for FY23 Geologic Mapping.
- High-resolution aeromagnetic and radiometric data is being collected in the Harney Basin quadrangles in 2023 (fulfills some match requirements). Additional field data collected in FY22/23 field campaigns.
- OWRD and the USGS are actively studying aquifers in Harney Basin in response to long-term groundwater level declines.
- Supports Greater Harney Valley Groundwater Committee and OWRD focus areas.

