



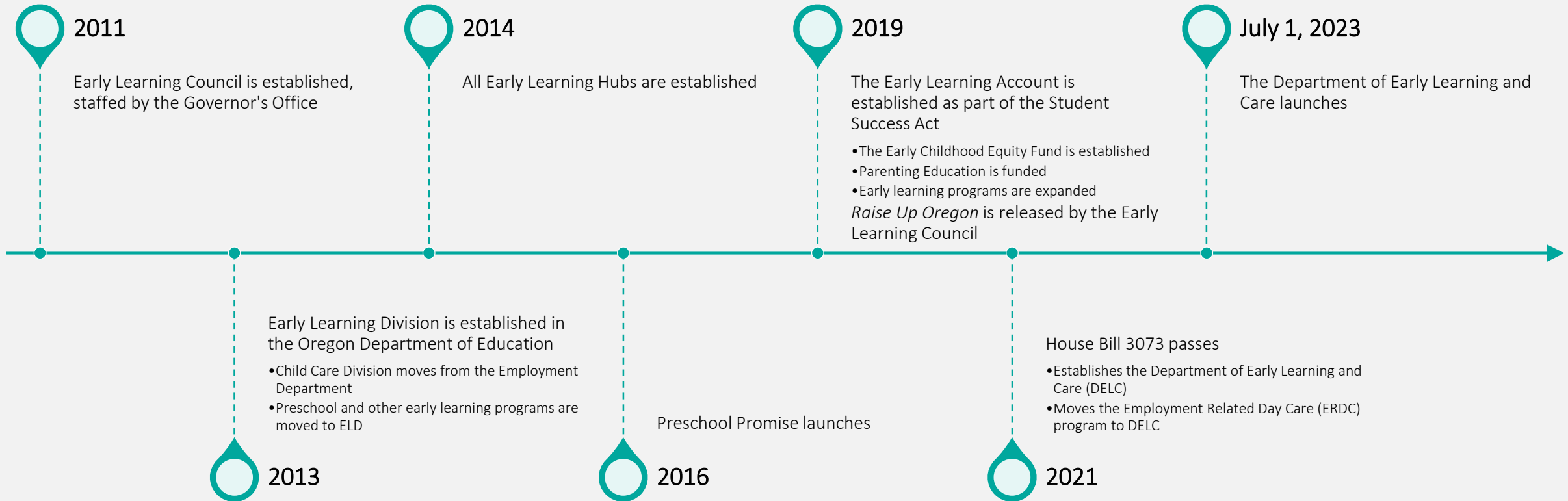
House Early Childhood & Human Services Committee

Alyssa Chatterjee, Early Learning System Director

January 18, 2023

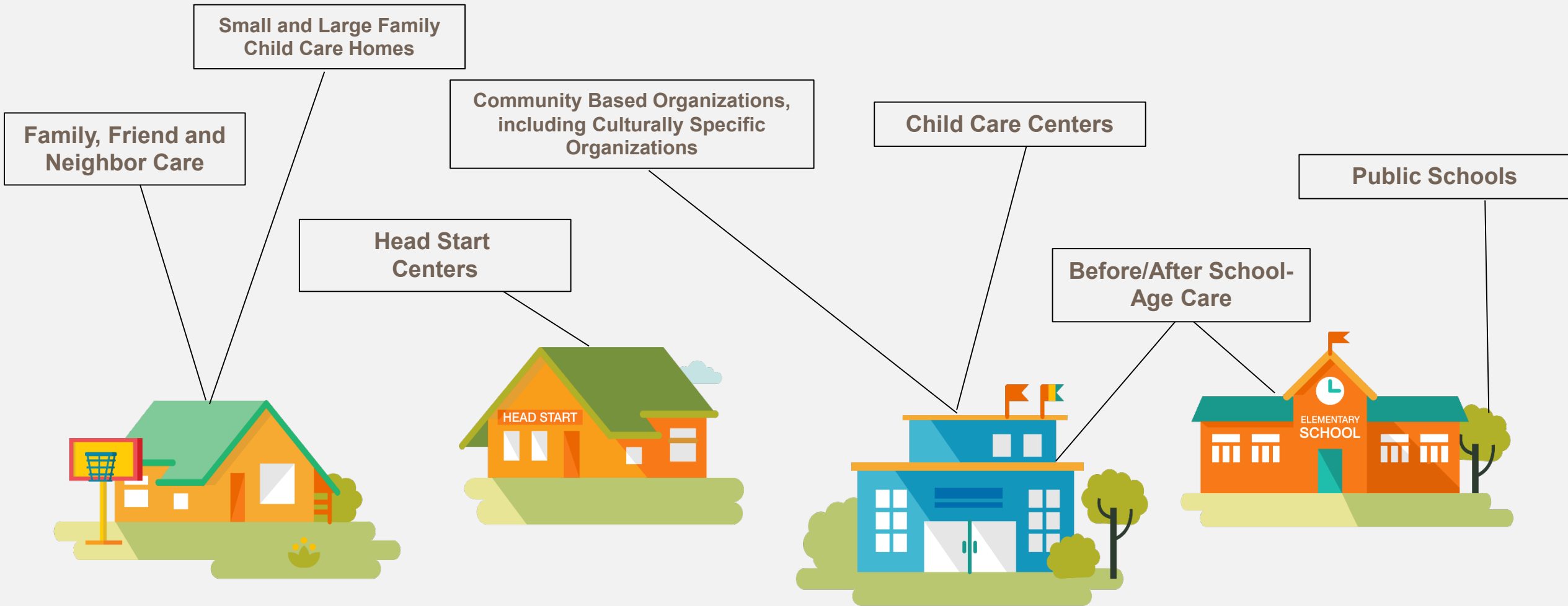


Early Care & Education Timeline



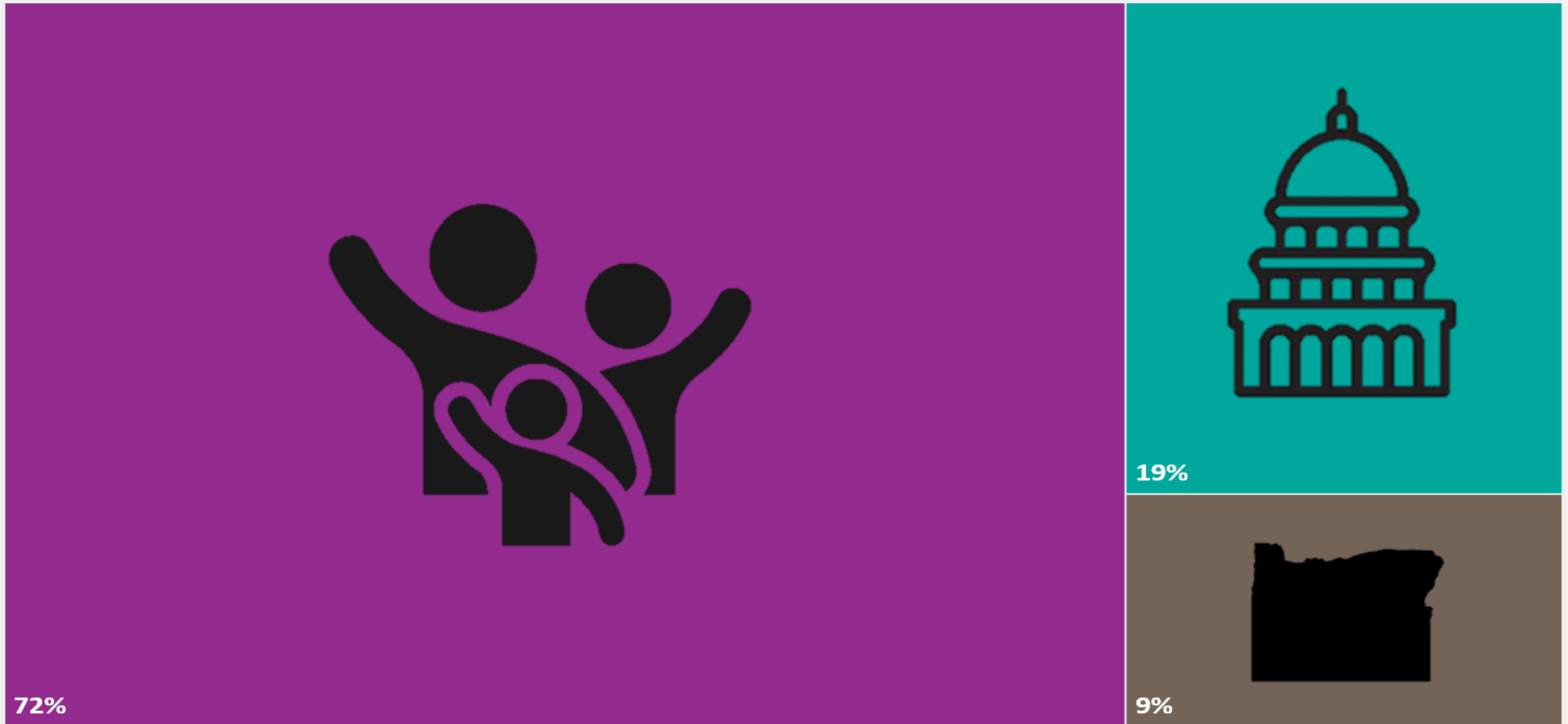


Early Care & Education is delivered across a variety of settings. This is why it is known as a "mixed-delivery" system.





Who funds the ECE Sector?*



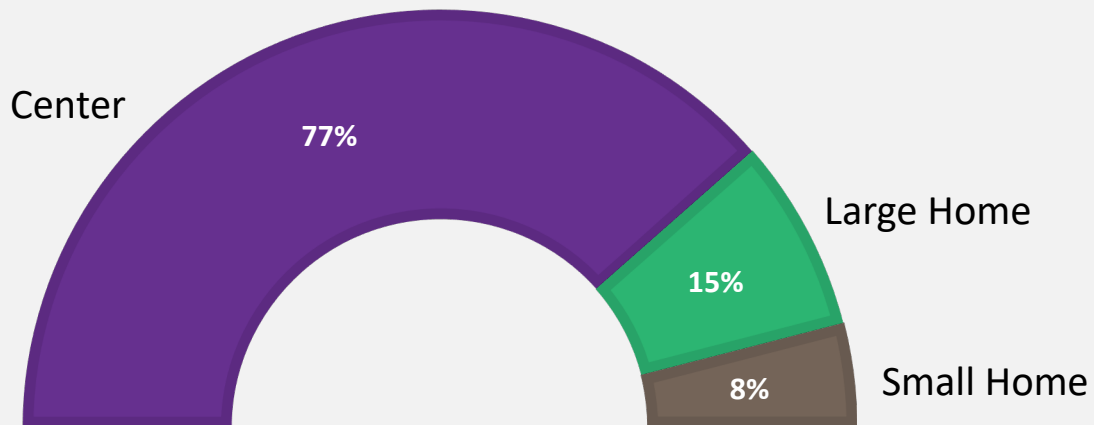
*prior to Student Success Act



Who makes up the ECE Workforce?

24,269

people worked in Oregon regulated early learning facilities

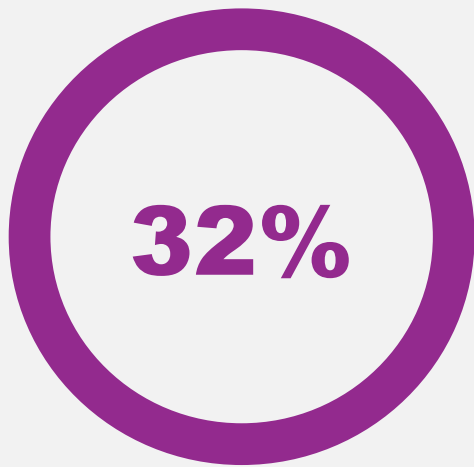


Median Wage

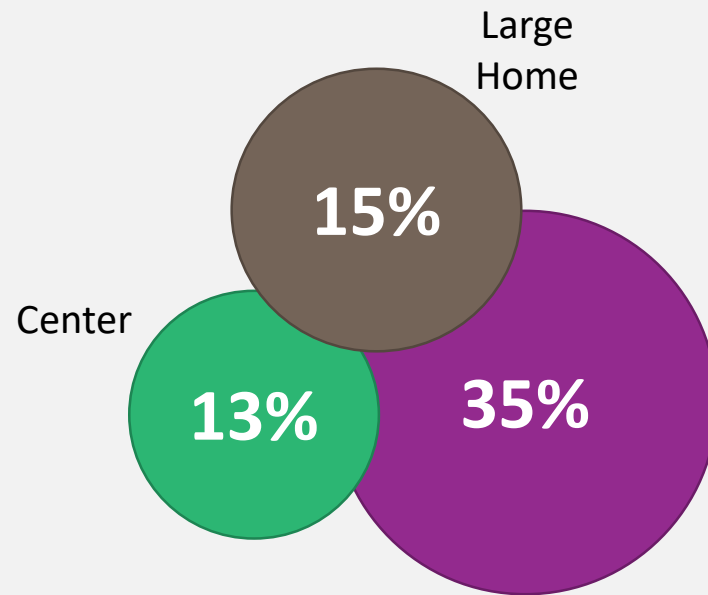
for teachers/head teachers in center-based care



Who makes up the ECE Workforce?



of the workforce identify as a person of color



Language Diversity

of the workforce report a primary language other than English



As of early 2020*, there is inadequate regulated child care supply across Oregon - especially for infants & toddlers

Public funding plays a major role in creating Oregon's child care supply - especially for preschoolers



There are 7 infants & toddlers for a single child care slot in Oregon

A child care desert is a community with 3 or more children for a single child care slot.



All 36 Oregon counties are child care deserts for infants & toddlers



3/4 of Oregon counties have fewer than 25% publicly funded regulated infant/toddler slots

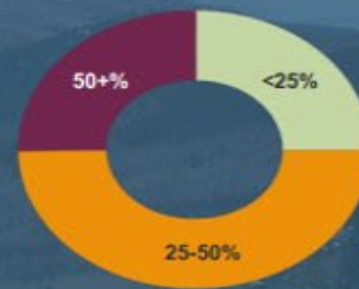


There are 3 preschool age children for a single child care slot in Oregon



All but 11 Oregon counties are child care deserts for preschool age children

Without publicly funded slots, 8 additional counties would be child care deserts.



Only 1/4 of Oregon counties have fewer than 25% publicly funded regulated preschool age slots

Definitions: **Infants & toddlers** are 0-2 year olds. **Preschool age children** are 3-5 year olds. **Regulated child care** includes certified centers, registered family homes, certified family homes, and exempt providers who have publicly funded slots. **Publicly funded slots** include Oregon Head Start Prekindergarten, Early Head Start, Preschool Promise, Federal and Tribal Head Start, and Federal Migrant and Seasonal Head Start managed by OCDC.

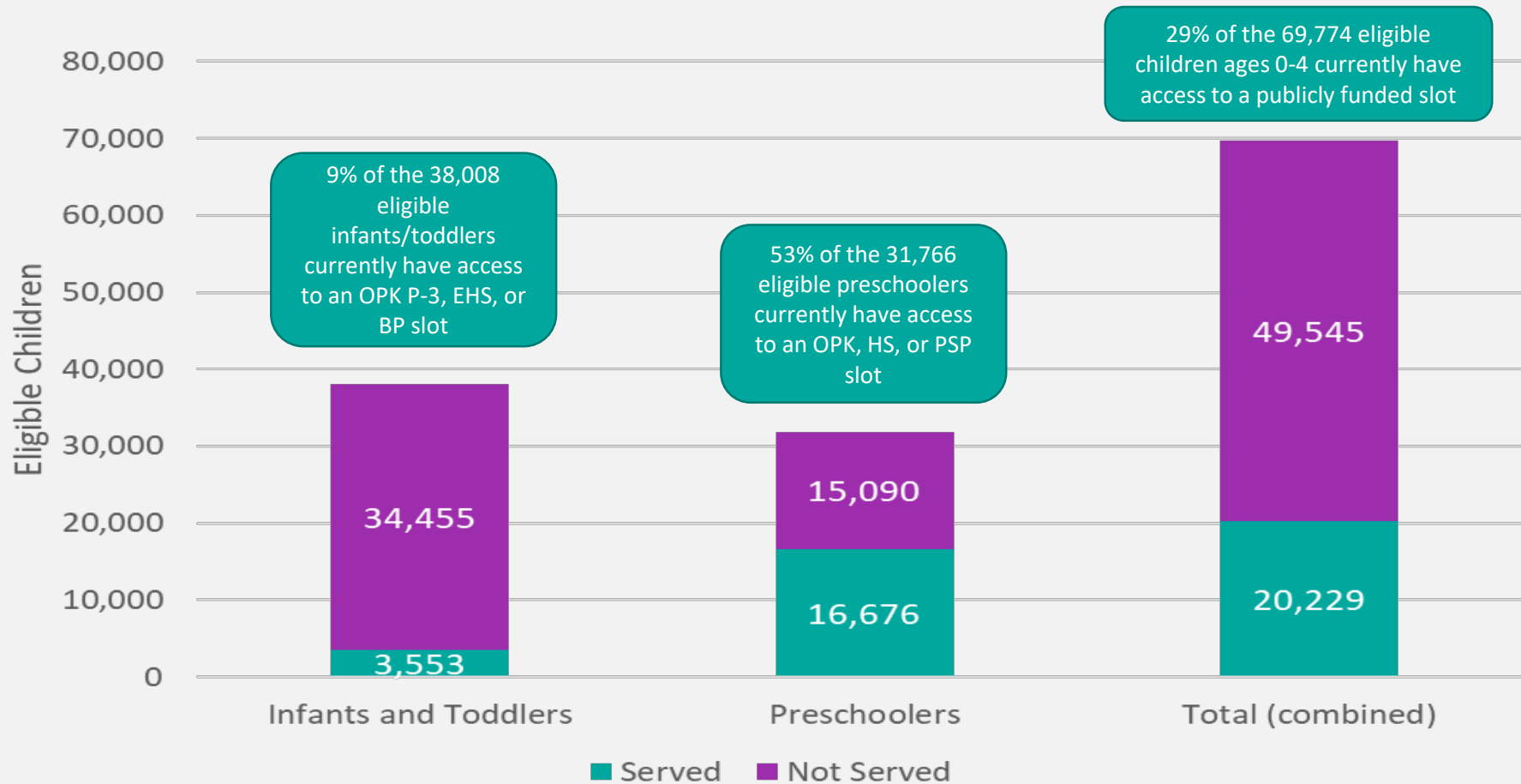
*As a baseline prior to the pandemic, this report describes the supply of child care as of March 1, 2020 (pre-COVID).

Reference: Oregon's Child Care Deserts 2020 Mapping Supply by Age Group and Percentage of Publicly Funded Slot, Oregon Child Care Research Partnership, Oregon State University.

Full report can be found at https://health.oregonstate.edu/early_learners/supply

For more information contact Oregon Child Care Research Partnership at oregonccrp@oregonstate.edu

Current service levels of public early learning programs



OPK P-3 = Oregon Prenatal to Three; EHS = Early Head Start; BP = Baby Promise; OPK = Oregon Pre-Kindergarten; HS = Head Start; and PSP = Preschool Promise.

Federal EHS slot estimate is 1,913 and Federal Head Start slot estimate is 3,954. EHS/HS estimates do not include Migrant/Seasonal or American Indian Alaskan Native Head Starts.

OPK P-3, BP, OPK, and PSP data represents ELD funded slots for 2022-2023. Source: Early Learning Division

Eligible populations defined as children ages 0-2 and 3-4 living in families at or below 200% of the Federal Poverty Level; Source: ACS 1-Year Estimates – Public Use Microdata Sample 2021



Why the Department of Early Learning and Care?

A consolidated child care sector and unified publicly-funded early care and education.

- A strong early learning system for Oregon's children and families that supports small businesses, preschool programs, schools and non-profits.
- Coordination and alignment of early learning programs.
- A child care and early learning system that is more responsive to the needs of and can grow the equitable access of care to children, families and providers.



DELC Services to Families and Early Learning Workforce Development

- Baby Promise
- Child Care Licensing & Compliance
- Child Care Resource & Referral entities
- Early Childhood Equity Fund
- Early Learning Hubs
- Employment Related Day Care
- Healthy Families Oregon
- Inclusive Partners
- Kindergarten Partnership & Innovation Fund
- Oregon Prenatal to Kindergarten
- Parenting Education
- Preschool Promise
- Professional Learning for the ECE Workforce
- Relief Nurseries
- Suspension & Expulsion Prevention
- Teen Parent Program



Child Care Licensing & Compliance

The Office of Child Care's (OCC) primary function is to ensure health and safety of children in child care by:

- Balancing the challenges the child care industry faces while also prioritizing child care safety through rulemaking and technical assistance.
- Approaching compliance with health and safety standards through education and providing resources, while maintaining a strong customer service lens to ensure license holders have all the information they need to be successful.






Policy body: Early Learning Council

- Cross-sector focus beyond early care & education through [Raise Up Oregon](#).
 - In the process of revising Raise Up Oregon 2.0
- Nine community leaders from across the state appointed by the Governor
- Includes agency leadership from:
 - Oregon Department of Education;
 - Oregon Department of Human Services;
 - Oregon Health Authority;
 - Oregon Housing & Community Services;
 - Higher Education Coordination Commission, joined December 2022.
- Administrative Rulemaking Authority

THE *RAISE UP OREGON* VISION

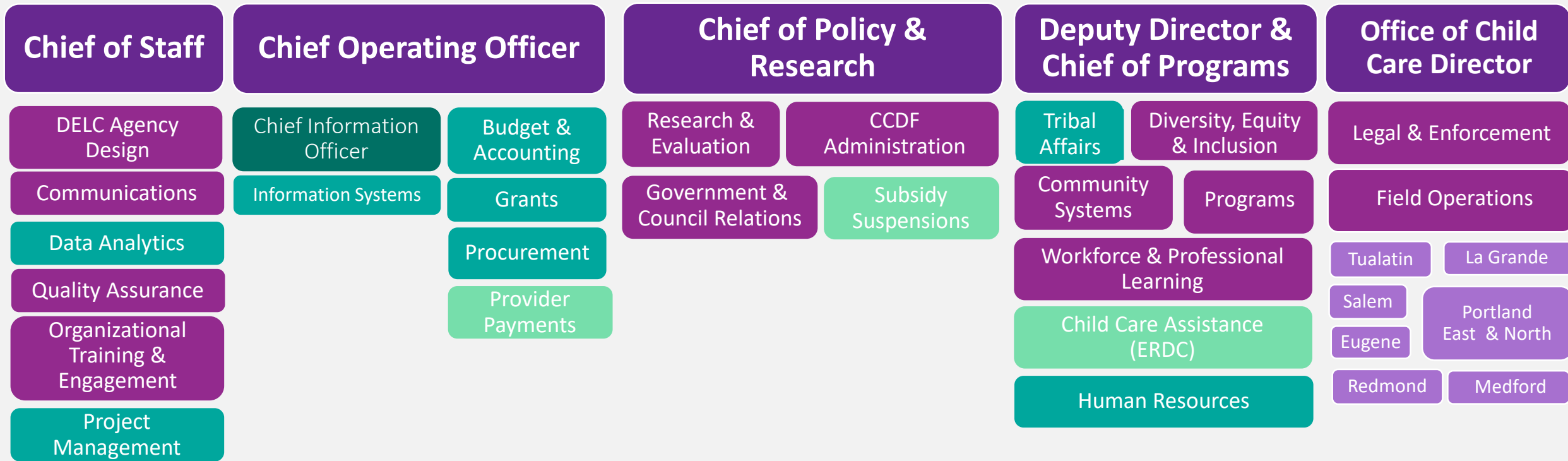


-  Children are raised in healthy, stable & attached families
-  Children arrive ready for kindergarten
-  The Early Learning System is aligned, coordinated, & family-centered



DELC Organizational Structure

Early Learning System Director

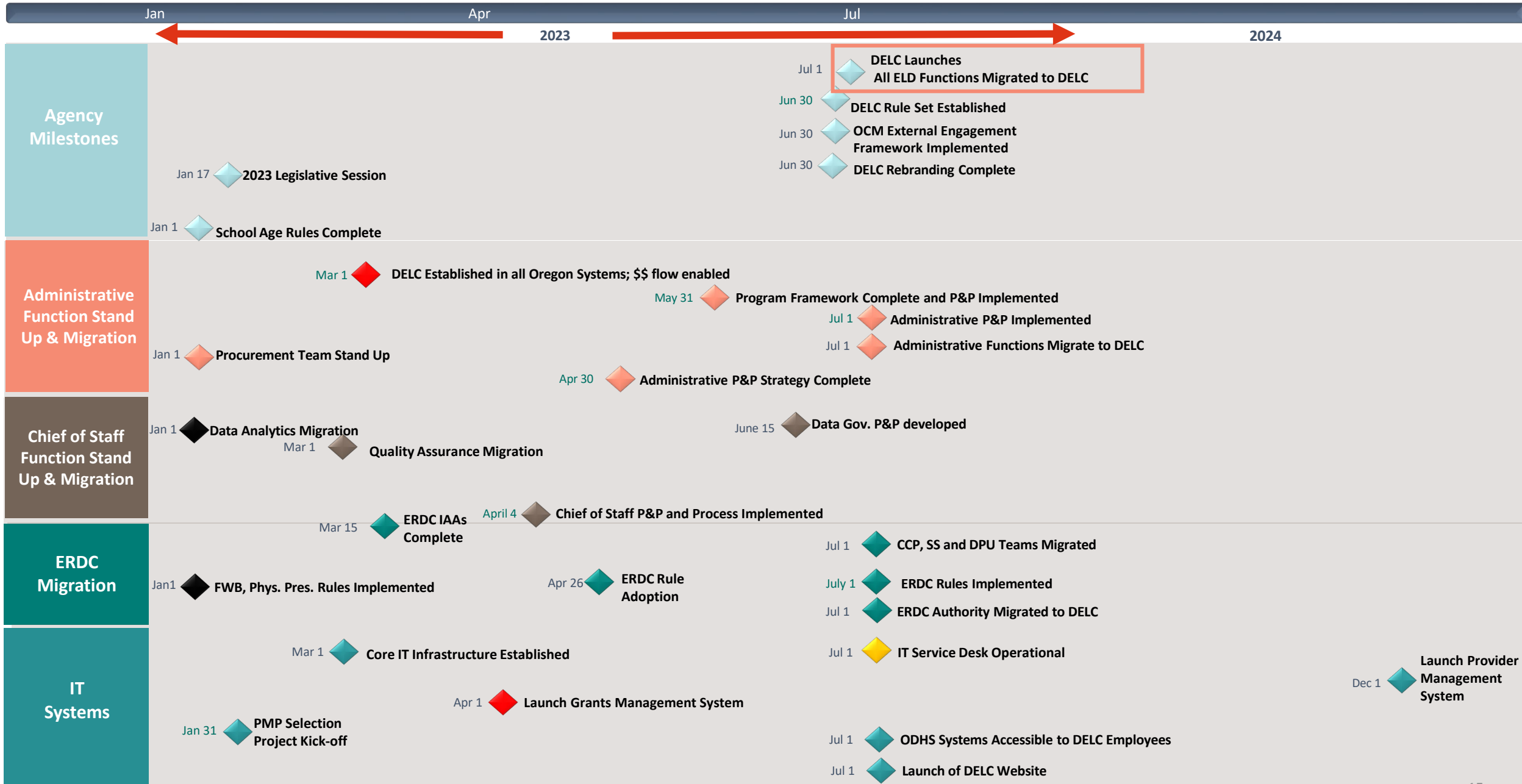


■ New DELC functions

■ Migrating ODHS functions

■ Field Offices

Remaining DELC Key Implementation Milestones





Employment Related Day Care Overview



Who does ERDC serve?

Over 17,000
children

Over 10,000
families

Over 3,000
providers

Avg. cost per
case: \$1,242

Avg. copay per
family:
\$14.50/month



How does ERDC work?

ERDC helps families with the cost of child care by making payments on their behalf to their chosen child care provider.

Family applies for subsidy via the ONE system and is determined eligible

Family reports their chosen child care provider to the Direct Pay Unit or their eligibility worker*

Billing forms are sent at the beginning of each month to the family's chosen child care provider*

Provider submits billing form to Direct Pay Unit for payment on family's behalf**

*Providers must be listed and approved through ODHS Direct Pay Unit for payment

**Payments are made up to state maximum child care rates based on child age, family's eligible hours/provider's billed hours, region of the state, and child care provider type

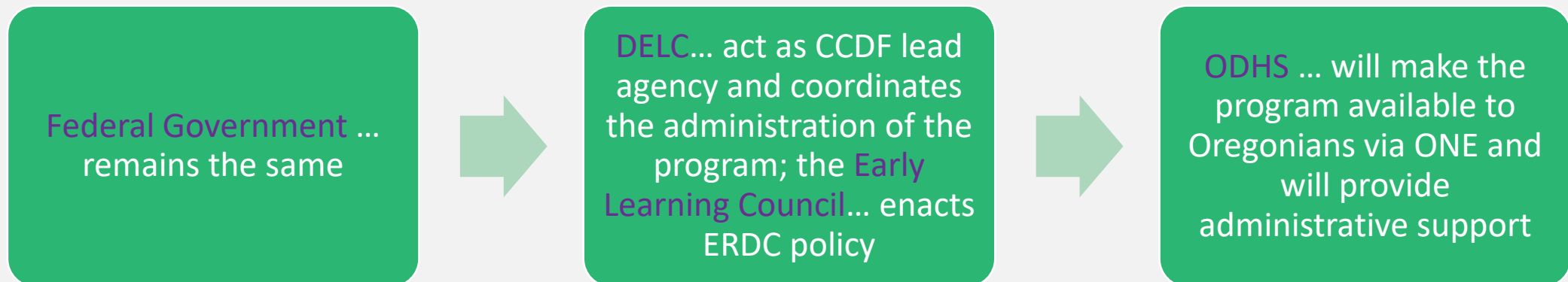


How will DELC and ODHS work together to administer the ERDC program?

The way ERDC is governed today:



The way ERDC will be governed:





Thank You

www.oregonearlylearning.com

Alyssa.Chatterjee@ode.oregon.gov

Christopher.Brown@ode.oregon.gov