

Chair Nathanson

Vice Chairs Pham and Reschke

Committee members

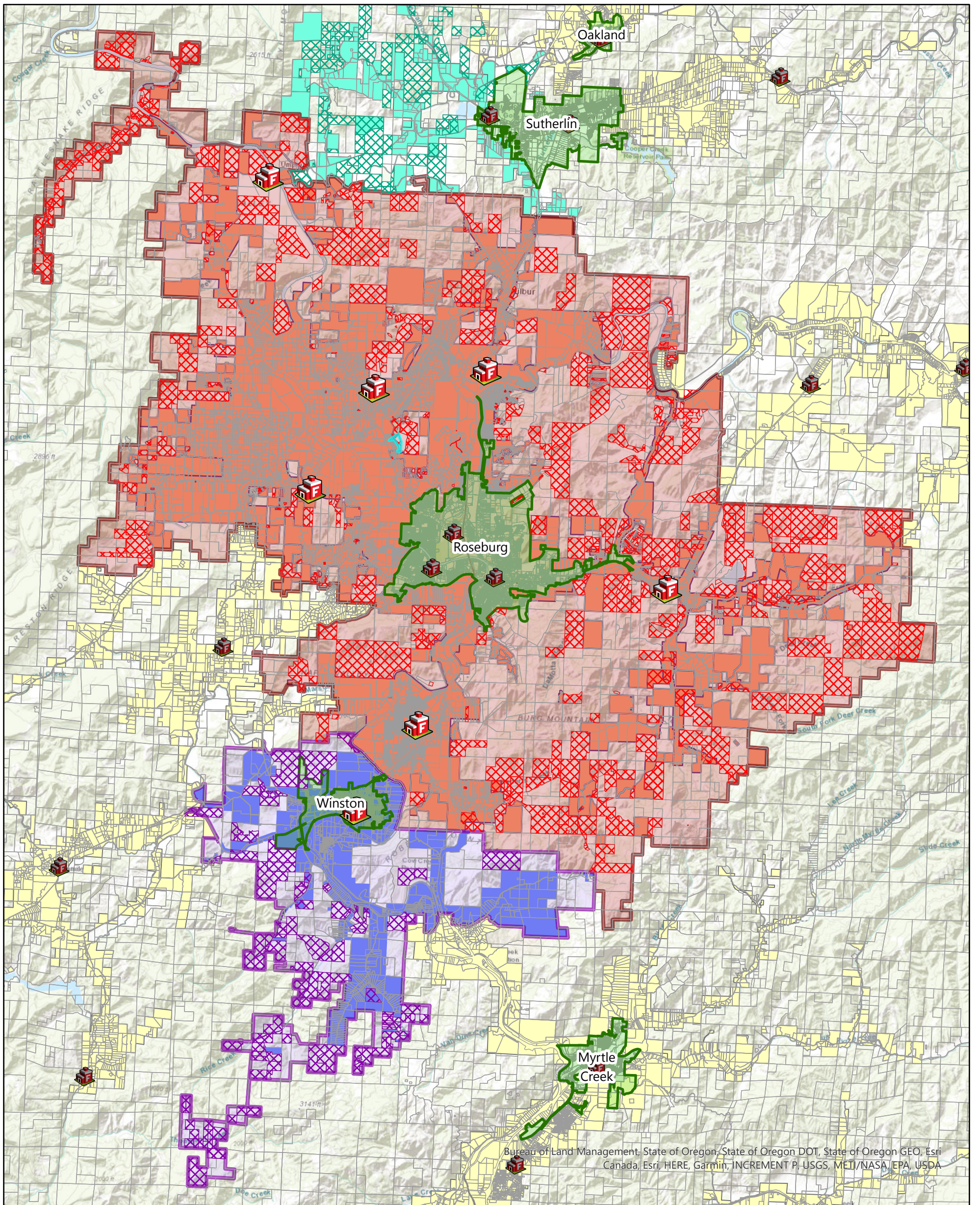
The first map shows Douglas County Fire District No. 2 as well as adjoining fire districts and cities. As a note, Winston-Dillard provides coverage for the City of Winston and there are multiple improved properties within the city that are not in the Fire District. On this map, the properties shaded with Xs in them for Douglas County Fire District No. 2, Winston-Dillard Fire, and Calapooia Fire District are improved properties not annexed into the fire districts and therefore receiving coverage and not being taxed. For Douglas County Fire District No. 2 this is approximately 700 properties and growing. For Winston-Dillard this is 200 properties and growing. There are currently just over 13,500 properties within Douglas County Fire District No.2 that are paying for the 700 to have fire and EMS services available. There are currently just over 3,160 properties within Winston-Dillard Fire District that are paying for the other 200 to have fire and EMS services available. By this map you can actually see that there are properties literally across the street or next to a fire station but technically not in the fire district.

The second set of maps are neighborhood maps that show some residential and rural residential neighborhoods protected by Douglas County Fire District No. 2. The yellow highlighted properties on each map are the improved properties in those neighborhoods that are not annexed into the fire district and therefore not being taxed for the services, while the white or grey properties are annexed in. You can see by these neighborhood maps how confusing it would be to know who to respond to in an emergency which is why they all get a response.

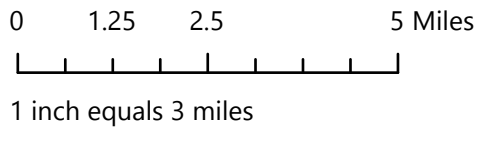
Both maps are just a small sampling of what is found throughout the state. Unfortunately, there are probably some departments that don't know they have the issue because they have not researched it. I mean if a house was built across the street from a fire station one would assume they are annexed into the fire district, but that is just not the case. All maps include a small legend to explain the colors and symbols.

Respectfully submitted,

Rob Bullock



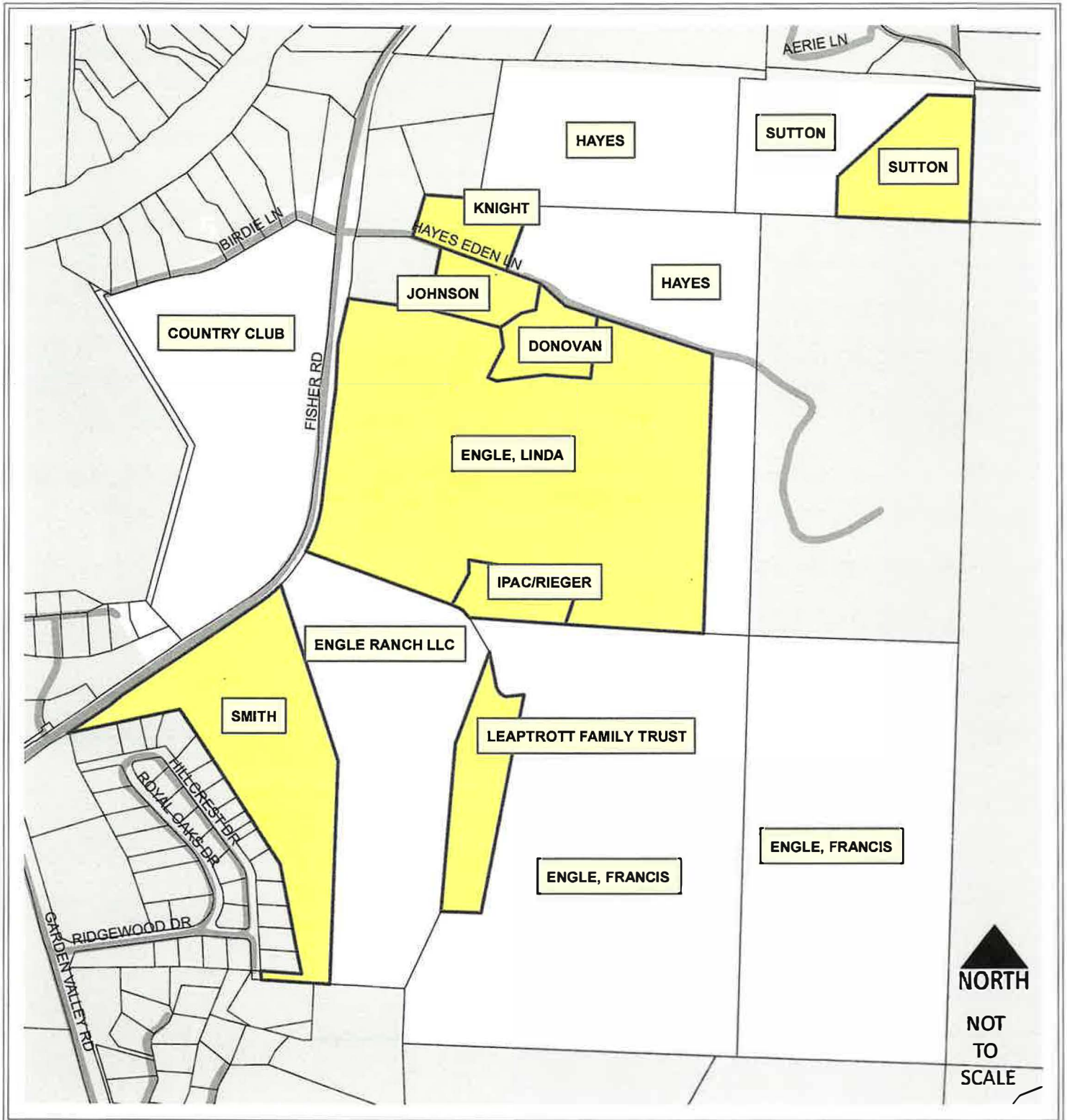
Bureau of Land Management, State of Oregon, State of Oregon DOT, State of Oregon GEO, Esri, Canada, Esri, HERE, Garmin, INCREMENT P, USGS, METI/NASA, EPA, USDA



- | Fire Stations | Fire Districts |
|------------------------|---|
| DCFD2, WDFD | Douglas County #2 |
| All others | Winston-Dillard |
| City District Boundary | Calapooya |
| | All other Fire Districts |
| | Non-Taxed Properties inside Proposed FD |
| | Non-Taxed Properties inside Winston Proposed FD |
| | Non-Taxed Properties inside Calapooya FD |

HAYES EDEN ROAD

VICINITY MAP
T26S R06W SEC 34



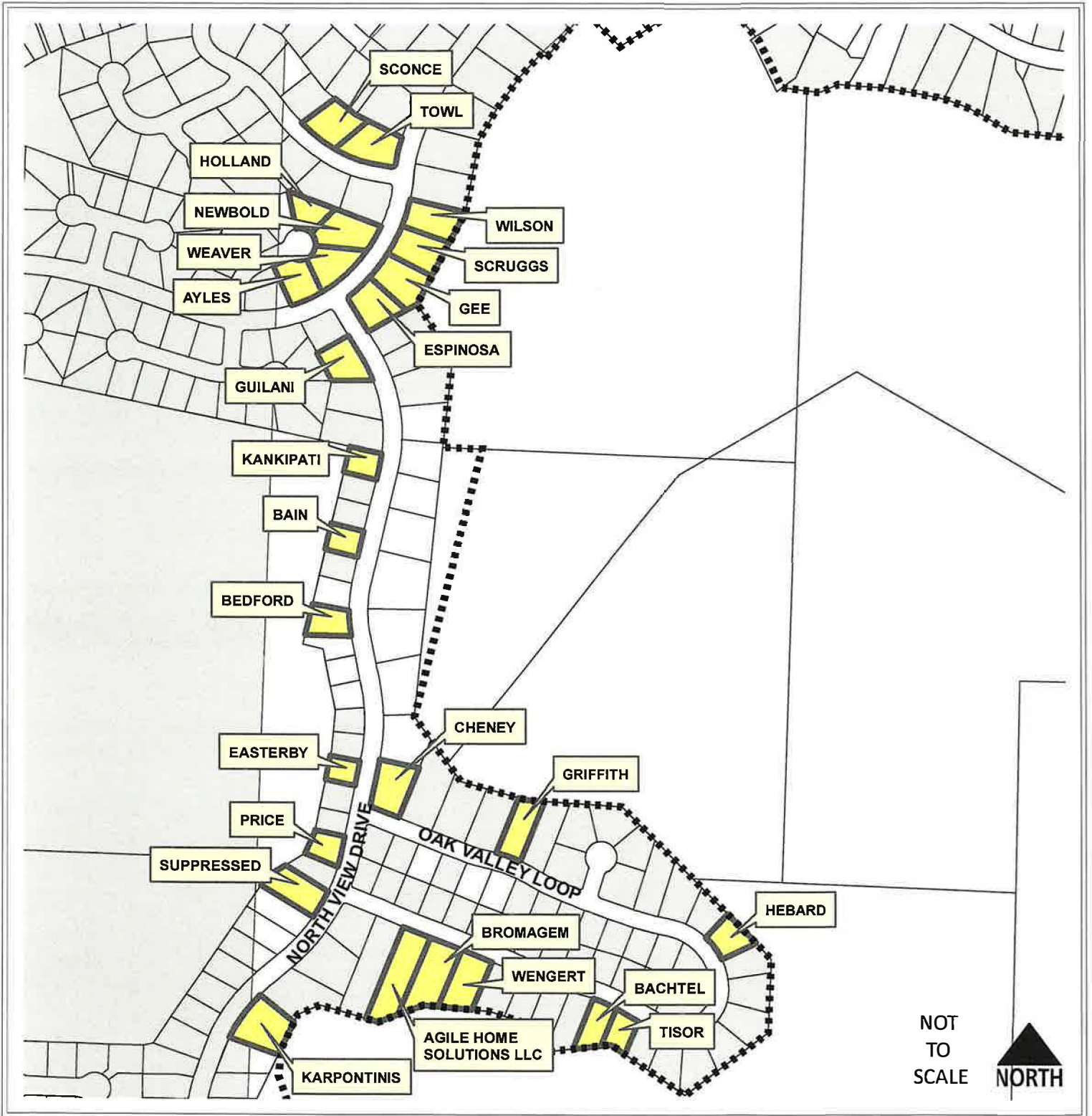
LEGEND

 IMPROVED

DOUGLAS COUNTY FIRE DISTRICT NO.2

NORTH VIEW DRIVE & OAK VALLEY LOOP

VICINITY MAP
T267S R5W

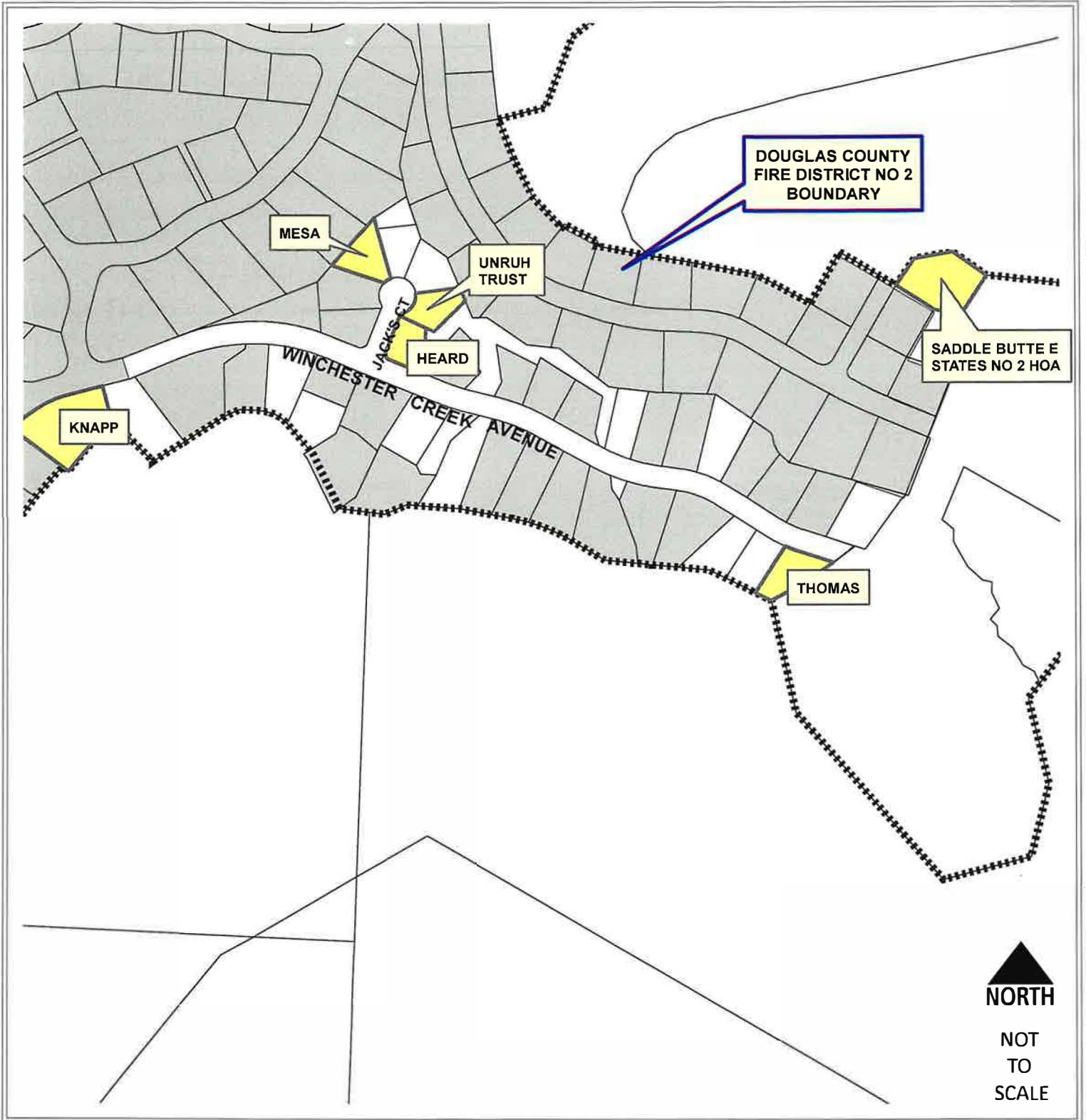


Legend


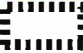

-  Improved
-  Douglas County Fire District No. 2

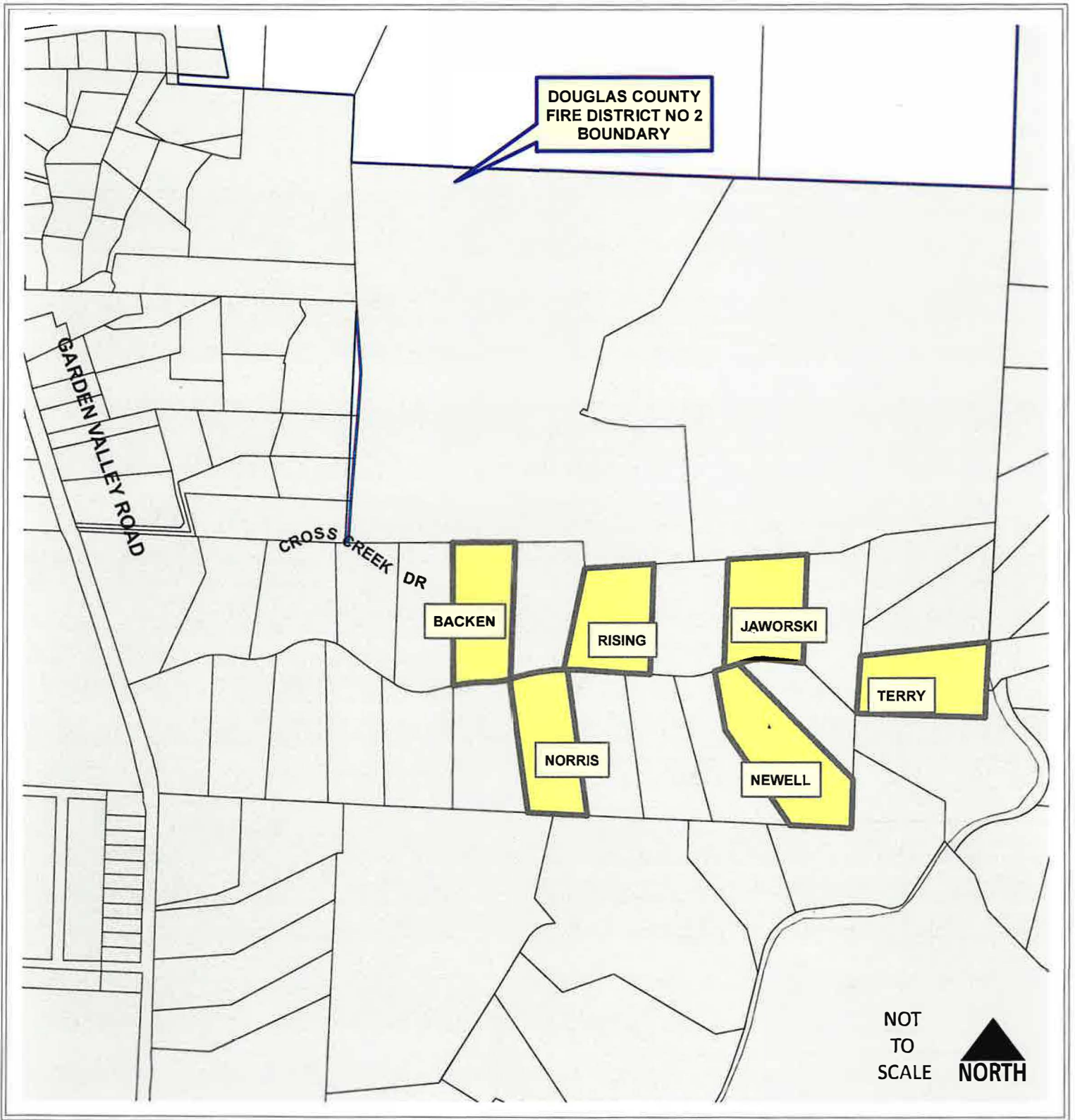
WINCHESTER CREEK AVENUE JACK'S CT

VICINITY MAP
T27S R6W SEC's 2 & 3



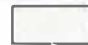
LEGEND

-  Improved
-  UGB
-  Douglas County Fire District No. 2



LEGEND

 Improved

 Douglas County Fire District No. 2