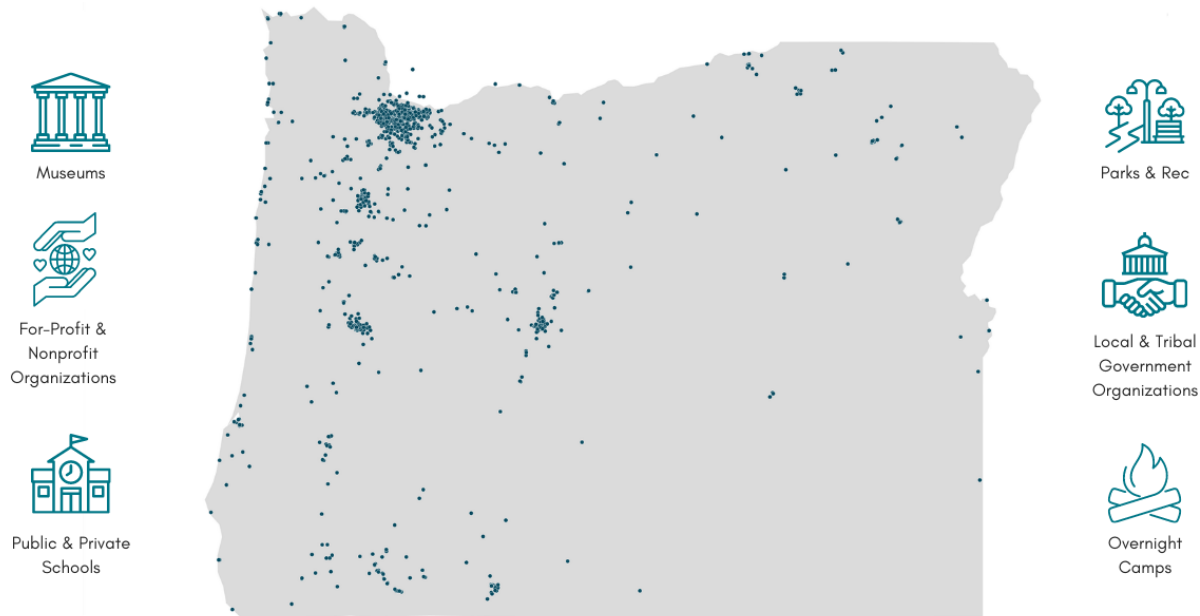


Summer 2021 at a Glance



This infographic uses information from OregonASK's Summer Learning Survey, which collected 270 survey responses from programs around the state. Those 270 responses represent 807 individual summer learning sites. OregonASK also identified an additional 963 summer learning sites through online research and collaboration with the Oregon Community Foundation. Location information is available for all 1,770 identified sites; all other information is based on survey data that represents our sub-set of 807 sites.

The map below shows the 1,770 summer learning sites identified by OregonASK in 2021. These summer opportunities were offered by a constellation of organizations.



On average, summer learning sites offered (overnight camps excluded):



20% of summer learning sites offered programming that lasted only one week. The most common start dates were Mid-June through Mid-July, and most common end dates were Late July through Late August

Median operating capacity

Compared to a "normal" year's capacity

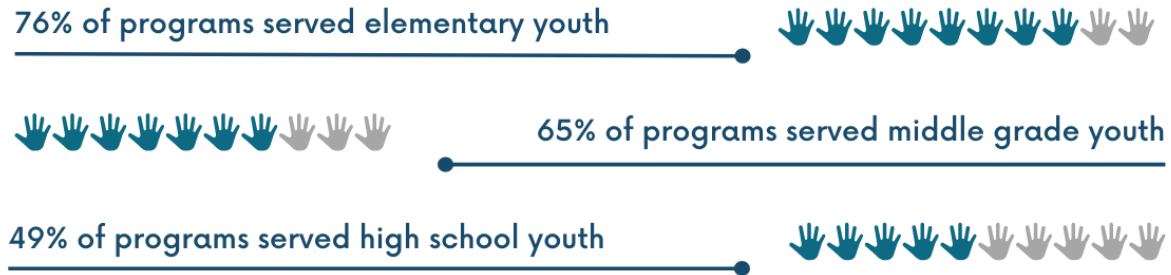
75%

Programs that charged fees

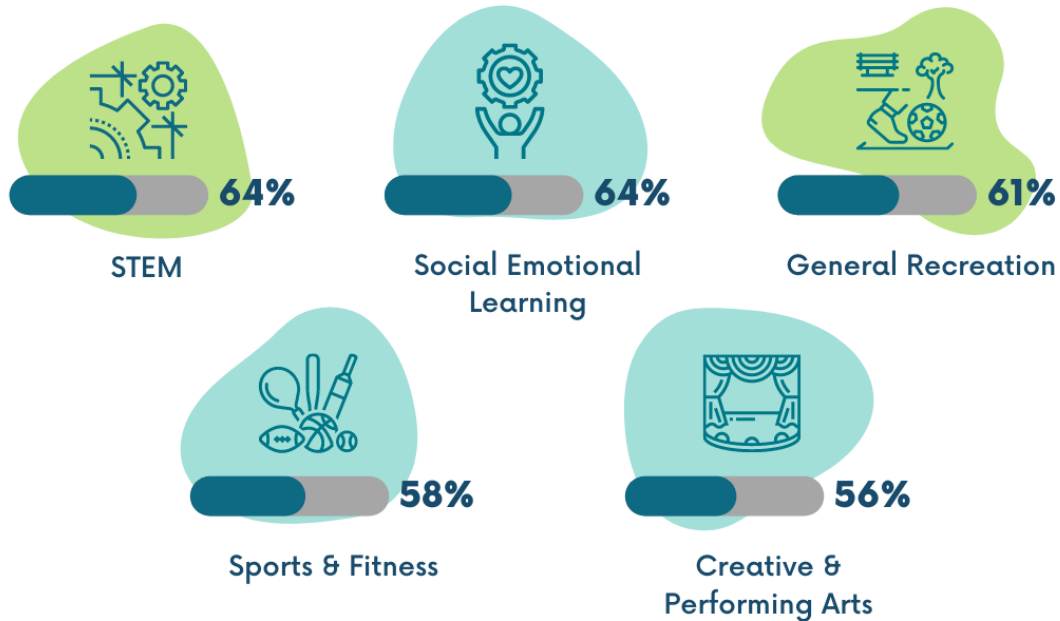
55%



The 807 summer learning sites in our sub-sample had the capacity to serve 94,165 youth.



The most commonly offered activities at summer programs:



Licensing

Excluding programs offered by public schools and local governments:

