

Why SB1589 is necessary?

Follow up to 2019 legislation

Preserve the Willamette River Greenway

Protects:

Critical shoreline habitat
State Land and Property

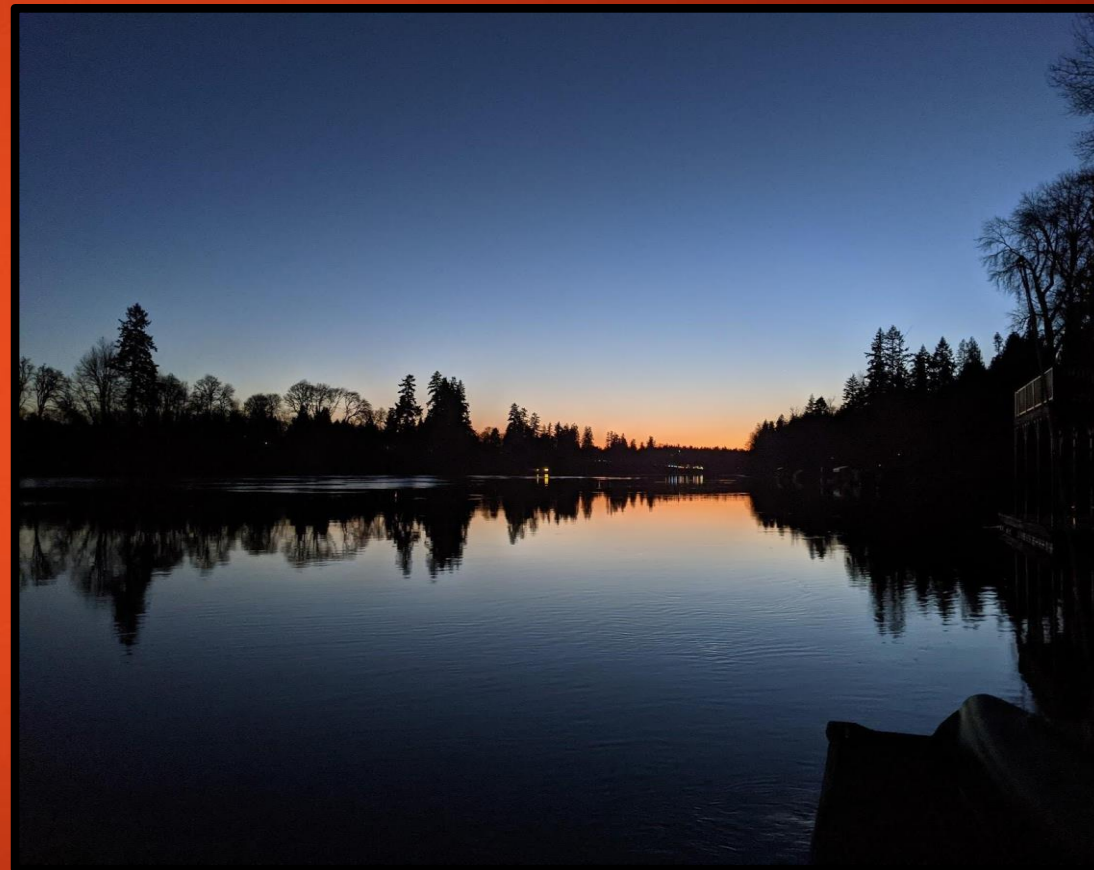
Complies with:

Endangered Species Act
Clean Water Act

Keeps boating and river recreation safe

Opens pathways for tourism dollars

**Ensures boating is sustainable now and
for future generations**



IN THE CAMPAIGN OF MISINFORMATION...

“TUBING SEASON CANCELLED!”

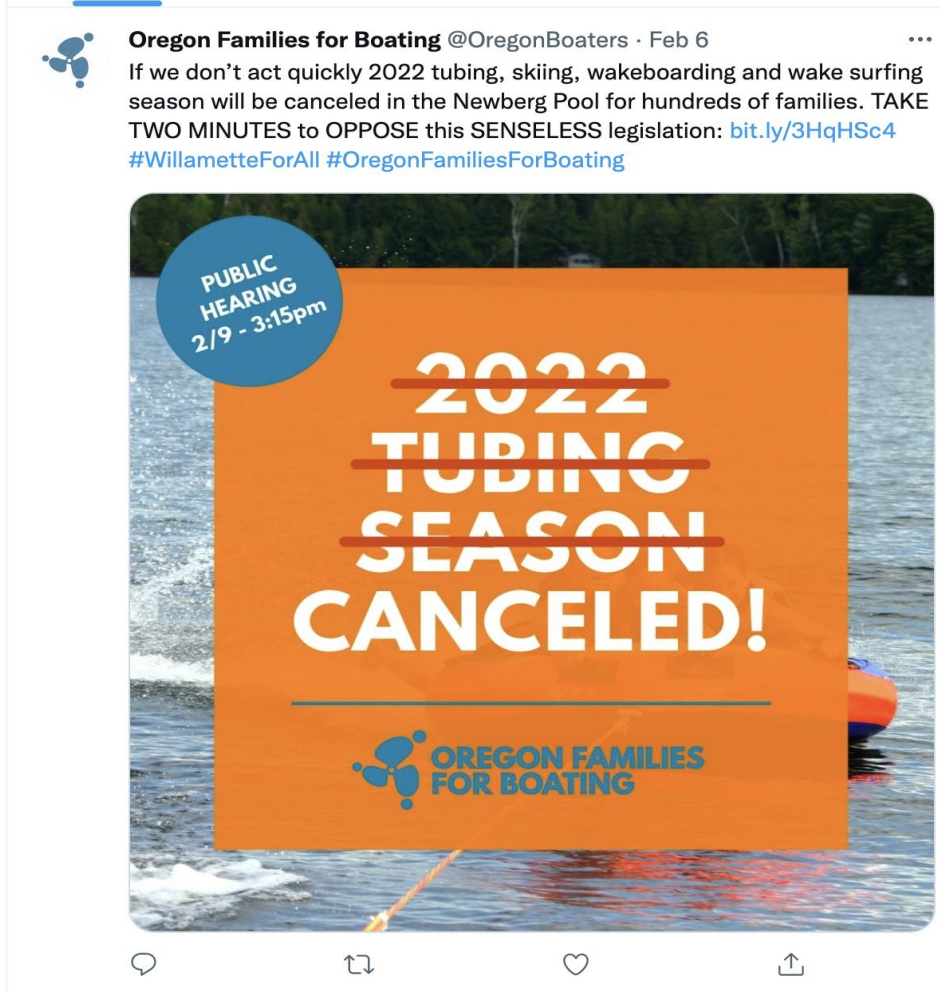
“Stop legislation to BAN WILLAMETTE RIVER BOATING”

“Self serving homeowners special interest groups, pushing policy to BAN TOWED WATERSPORTS”

“useless regulations that will BAN TOWED WATERSPORTS”

“Special interest groups restricting waterways”

“THERE IS NO EMPIRICAL EVIDENCE!”



**NO BOATS
WILL BE BANNED FROM USING THE NEWBERG POOL!**

**437 boats IN OREGON have certificates/decals to
participate in Towed Sports in the Newberg Pool.
(OSMB testimony chart 2/7/22)**

**JUST 30 OF THOSE BOATS OVER 5,000 POUNDS
ARE ACTUALLY MOORED IN THE NEWBERG POOL!**

Science states 500' from the shore (1000') is necessary for wakes to equal the wake energy of a ski boat at 100 feet. The Newberg Pool has an average span of just 580 wide and does not have ample width to allow for the dissipation of the wake's massive amount of energy before impacting the shoreline.



07/28/2016 06:39:22 pm TUL



5

"Wakes generated by boats have been **recognized** as a **contributing factor of streambank erosion by many investigators."**

*Dr. Desiree Tullos, Ph.D., Oregon State University
Professor Biological & Ecological Engineering
Presentation to policymakers 7/19/19*

Camera 3

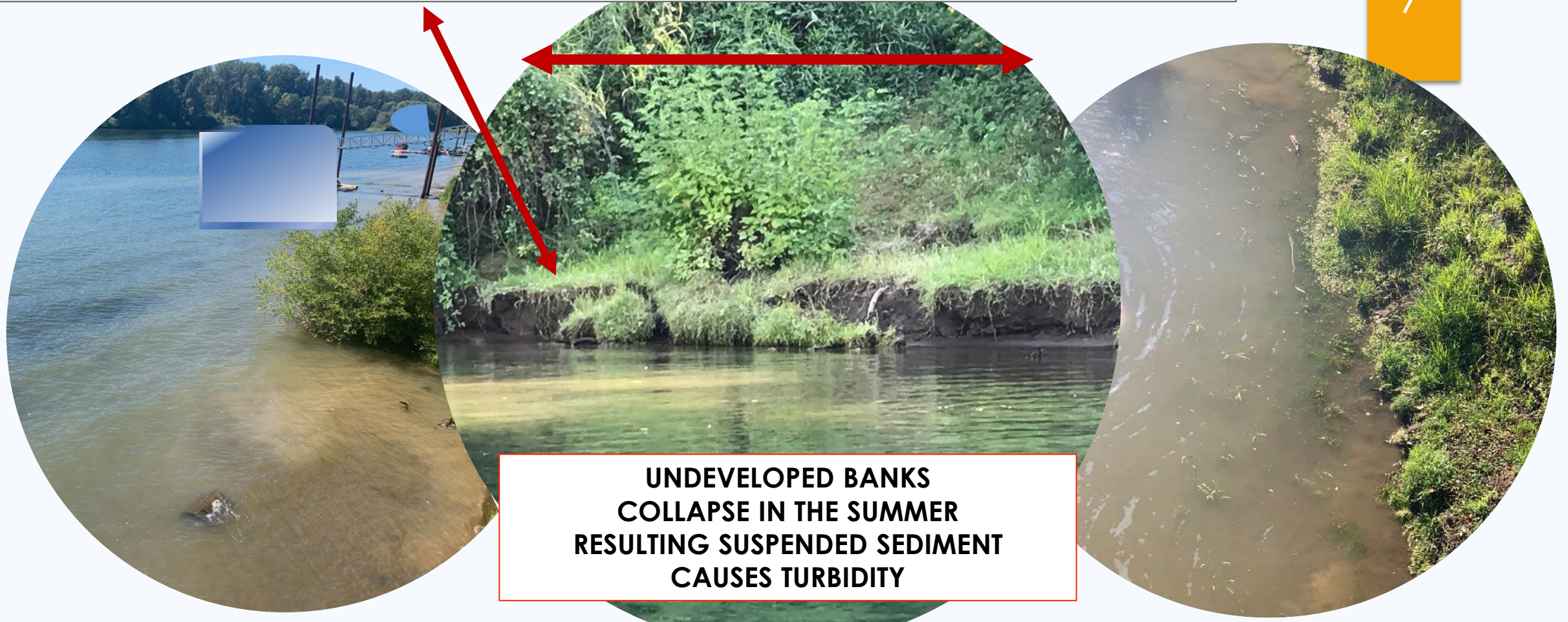


► The May 1, 2021, **closure of nearly 4 miles** of the **Lower Willamette** to ALL towed watersports pushes more users to the Newberg Pool which,

- *Is **less than half the width** (580' vs 1500')*
- *Has **vertical soft silt embankments** (vs. the Lower Rivers's gradual rocky shoreline)*
- *Is not tidal (all **wakes hit the same spot, all season long**)*
- *Has **no space** for wakes to **dissipate***
- ***Is suffering serious erosion***

EROSION AT WAKE HEIGHT. NOT THE HIGH-WATER MARK

7



UNDEVELOPED BANKS
COLLAPSE IN THE SUMMER
RESULTING SUSPENDED SEDIMENT
CAUSES TURBIDITY

THE WILLAMETTE RIVER IS DEEP. WAVES HAVE LITTLE RESISTANCE BEFORE HITTING THE SHORELINE
WSIA STUDY – **“DEEP NARROW WATERWAYS WOULD BENEFIT FROM A NO WAKE ZONE”** – CLIFFORD GOUDY

“WAVES GENERATED BY THESE BOATS ARE TOTALLY UNAFFECTED BY THE RIVERBED.”
Dr. Gregor MacFarlane, Australian Maritime College, University of Tasmania



**This is SUMMER UNDERCUTTING ~
causing embankments to collapse**

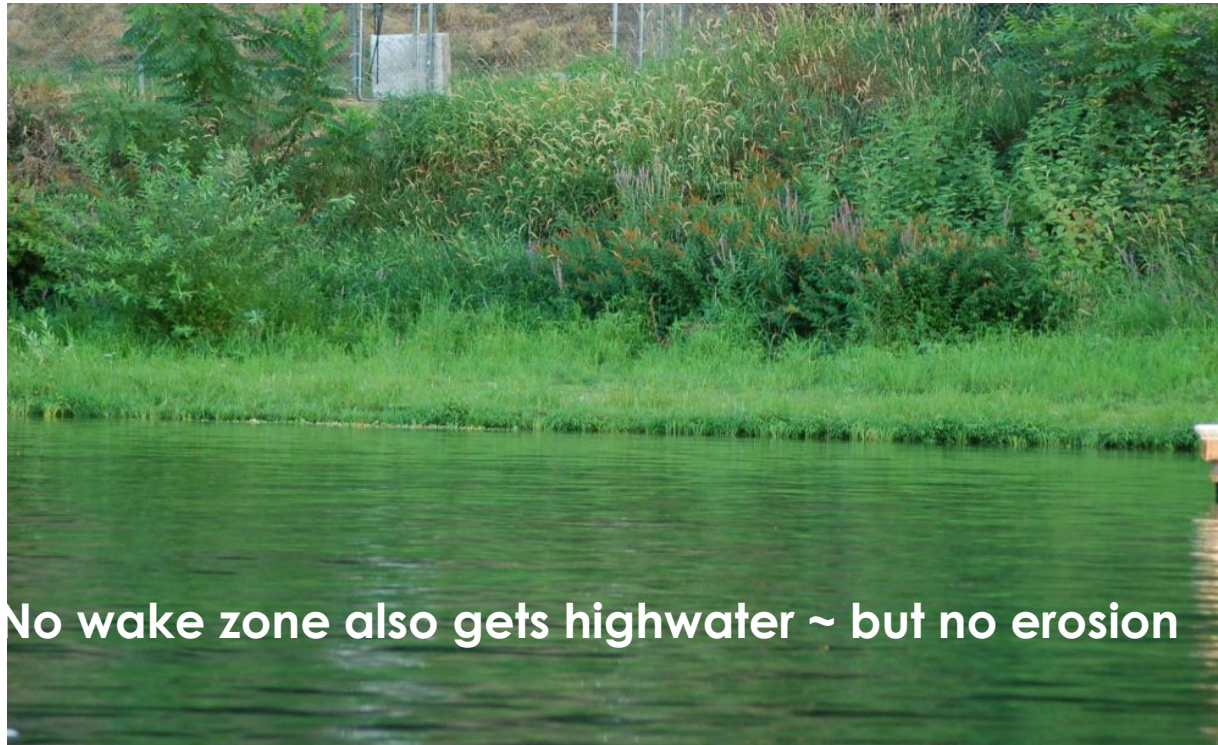
“Changes caused by nature are very minor in comparison to the effect of many waves in a single day, that is a very significant component.”

Dr. Pedro Lomonaco, Ph.D., Oregon State University Director O.H. Hinsdale Wave Institute

***“We do NOT typically see erosion in a pool.”**

9

NO WAKE ZONE



WAKE ZONE



***Dr. Desiree Tullos, Ph.D.,** P.E. D.WRE, M.ASCE,
Assoc. Professor Biological & Ecological Engineering, OSU
Professor - River Morphology and Restoration

”Because control of the river flow on the significantly reduces the velocity of the river, changes caused by nature are very minor.”

*Dr. Pedro Lomonaco, Director,
O.H. Hinsdale Wave Laboratory
Oregon State University*



Supporters of SB1589



- Oregon League of Conservation Voters
- Oregon Conservation Network
- The Native Fish Society
- Willamette Riverkeeper
- Conservation Angler
- Oregon River Safety and Preservation Alliance
- 1000 Friends of Oregon
- Friends of Historic Butteville
- Trout Unlimited
- Urban Green Spaces
- Water Watch
- Willamette Greenway Alliance
- Human Access Project