

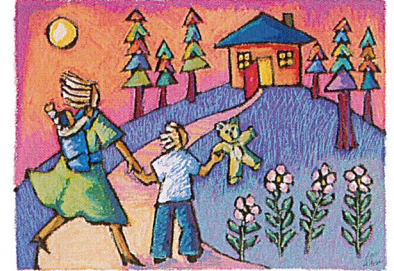
May 7, 2021

RE: HOPE Plaza Housing Project for Survivors of Violence

Co-Chairs Girod and Holvey and members of the committee:

I am writing to you in regard to the HOPE Plaza Housing Project through the Center for Hope & Safety. The Center for Hope & Safety provides comprehensive services to victims and survivors of domestic violence, sexual assault, stalking and human trafficking in Marion and Polk Counties. Last year, our program received more than 33,000 contacts to our program.

Center for HOPE & SAFETY



Formerly Mid-Valley Women's Crisis Service

HOPE Plaza is a shovel ready project that will bring much needed low-income housing to children and adults rebuilding their lives free of violence. HOPE Plaza will use a Domestic Violence Housing First model, which moves families into housing quickly, taking into account all the safety needs of survivors and their children.

HOPE Plaza had been approved to receive \$2.5M in Lottery Bonds funds in 2020, but due to the pandemic those funds were held back. In addition, many donors and foundations diverted funding to the COVID relief efforts. This left no options to fund a project that is set to change the trajectory of vulnerable families for years to come.

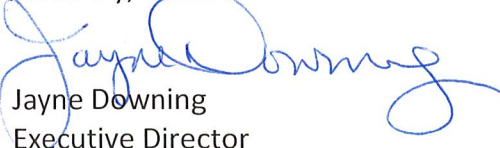
In spite of the setbacks, our program continued to prepare for the project, making sure everything is in place to begin immediately upon receiving funding. This prep work includes already securing vouchers to assure it can provide critical low-income housing for survivors for 10+ years. In addition, HOPE Plaza has already secured more than \$2M in community support and in-kind donations, making this project primed to begin construction as soon as the funds are made available.

Everything is set in place and with your support, HOPE Plaza can become a reality - providing housing, jobs, and wrap around services in Oregon. Please remember HOPE Plaza when you consider the lottery bond requests.

HOPE Plaza will change the outcome for survivors and their children for generations to come.

Thank you for your consideration.

Sincerely,


Jayne Downing
Executive Director

605 Center St NE • Salem, OR 97301 • hopeandsafety.org
503-378-1572 office • 503-399-7722 hotline

because everyone deserves a life free of violence

HOPE plaza

Housing • Opportunity • Partnerships • Employment

HOPE Plaza will generate **housing**, create **opportunity**, build community **partnerships** and provide **employment** for victims and survivors of domestic violence, sexual assault, stalking and human trafficking.

Center for Hope & Safety has been providing supportive services to victims and survivors since 1973.

There is one barrier nearly every survivor we support faces:
finding stable and affordable housing for themselves and their children.

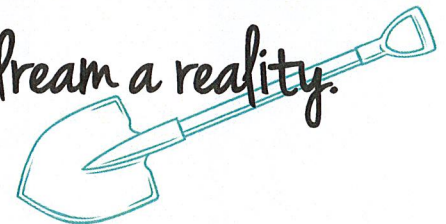
The vision for HOPE Plaza addresses this very real need for survivors in our community.

HOPE Plaza will revitalize the old Greyhound Bus Station site, providing retail space for businesses and downtown housing for survivors. The first-floor businesses in HOPE Plaza will offer job training opportunities and/or services to survivors. An additional two floors will provide 20 units of housing for those we serve.

With a rental vacancy rate of less than 3%, HOPE Plaza will address the severe housing shortage and the **increase in demand for services to victims and survivors exacerbated by the pandemic and wildfires in our area.**



We need your support to make this dream a reality.



To learn more, please contact:
Jayne Downing or Amanda Cole
Center for Hope & Safety
503-378-1572 •
info@hopeandsafety.org

Consider this
project for
Lottery Bond
Funds!

This project is
SHOVEL READY.
All we need is
your support!

Center for
**HOPE &
SAFETY**

in partnership with



CITY OF *Salem*
AT YOUR SERVICE

ANDERSON SHIRLEY
ARCHITECTS INC.

Scan this QR code to learn more about the **mission** of Center for Hope & Safety, and our **vision** for HOPE Plaza.



Scan to learn more!

Or visit our website at www.hopeandsafety.org



FIRST FLOOR
SCALE: 1/8" = 1'-0"

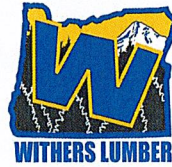


CENTER FOR HOPE AND SAFETY

Two floors of housing units for survivors and their families.

SECOND FLOOR
SCALE: 1/8" = 1'-0"

With the additional support of:



business
oregon

KEYSTONE
GRANITE, INC.



MARION POLK
FOOD SHARE

Oregon Department
of Human Services

Building a Better Future!

