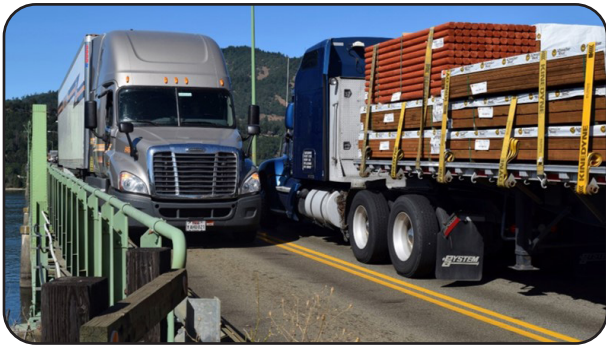


# HOOD RIVER-WHITE SALMON INTERSTATE REPLACEMENT BRIDGE

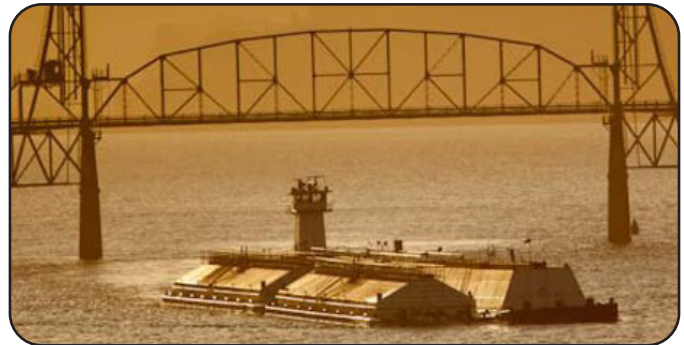
## Phase 2: Project Development Funding Request

### Project Need

The Hood River-White Salmon Interstate Bridge is a critical link in the Mid-Columbia Gorge region that enables workers, emergency responders, tourists, agricultural products, and other goods and services to travel across the Columbia River between Oregon and Washington. The toll bridge is nearing the end of its serviceable life; it is functionally obsolete, weight-restricted, seismically deficient, and a hazard for maritime freight on the Columbia River. A bi-state effort is underway to develop a new Replacement Bridge. The Replacement Bridge will be tolled; and toll revenues will be the primary source of construction funding. However, unless construction on a new “Replacement Bridge” connecting White Salmon and Hood River is underway by 2026, these toll revenues will have to instead be spent on an expensive rehabilitation (\$50M in the next 15 years) of the existing bridge to provide for its continued safe operation. To this end, the Port of Hood River asks the Oregon Legislature for \$5 million to match Washington, federal and local funds for Phase 2 of the Replacement Bridge Project.



*Narrow lanes and lack of shoulder constrain freight, transit, and emergency response vehicles.*

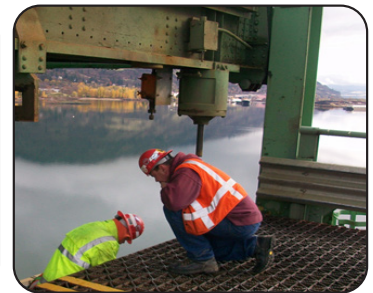


*Navigational clearance on the federal waterway is at least 200' less than the minimum recommended width.*

### Project Status

The 2017 Oregon Legislature approved \$5 million in Phase 1 project funding. Phase 1 includes environmental studies required to satisfy the National Environmental Protection Act (NEPA). Federal Highway Administration (FHWA) approval of a Supplemental Draft Environmental Impact Statement is expected soon, and a Final EIS is anticipated by Fall 2021.

Klickitat County and the Washington cities of Bingen and White Salmon have partnered with the City of Hood River, Hood River County, and the Port of Hood River to create a “Bi-State Working Group” (BSWG) to move the Replacement Bridge Project forward with bi-state cooperation and coordination.



*The Hood River-White Salmon Bridge Replacement Project has been the first priority of the Comprehensive Economic Development Strategy for the Mid-Columbia Economic Development District for many years. The project enjoys significant citizen engagement and support on both sides of the river.*

## Phase 2 – Project Development

Project Development (Phase 2) will start July 2021, and will cost \$16.25 million. Completion of Phase 2 will allow the project to move to construction. Activities to be funded include:

- The engineering work will be advanced to 30% design, providing significantly more reliable cost estimates and construction schedules.
- Level 2 traffic and toll revenue study will be prepared, allowing more reliable estimates of the bonding capacity of the net toll revenues.
- Continued environmental mitigation and permitting.
- Bi-state bridge authority establishment and implementation.
- Development of preliminary financial plans.
- Assessment of project delivery options.



*Conceptual design illustration showing the new bike/pedestrian lane, separated from vehicle traffic, with viewpoint area and benches. View north, Washington shore in the distance.*

## Phase 2 Funding Sources

- Federal Department of Transportation: Federal BUILD grant - \$5 million (secured September 2020)
- Port of Hood River: \$1.25 million (committed September 2020)
- State of Washington: \$5 million (secured in 2021 Washington state transportation budget)
- State of Oregon: \$5 million (requested 2021)

