

Building Infrastructure Leading
to Diversity (BUILD) Program

BUILD EXITO

Supporting students on their
successful
pathway to biomedical research

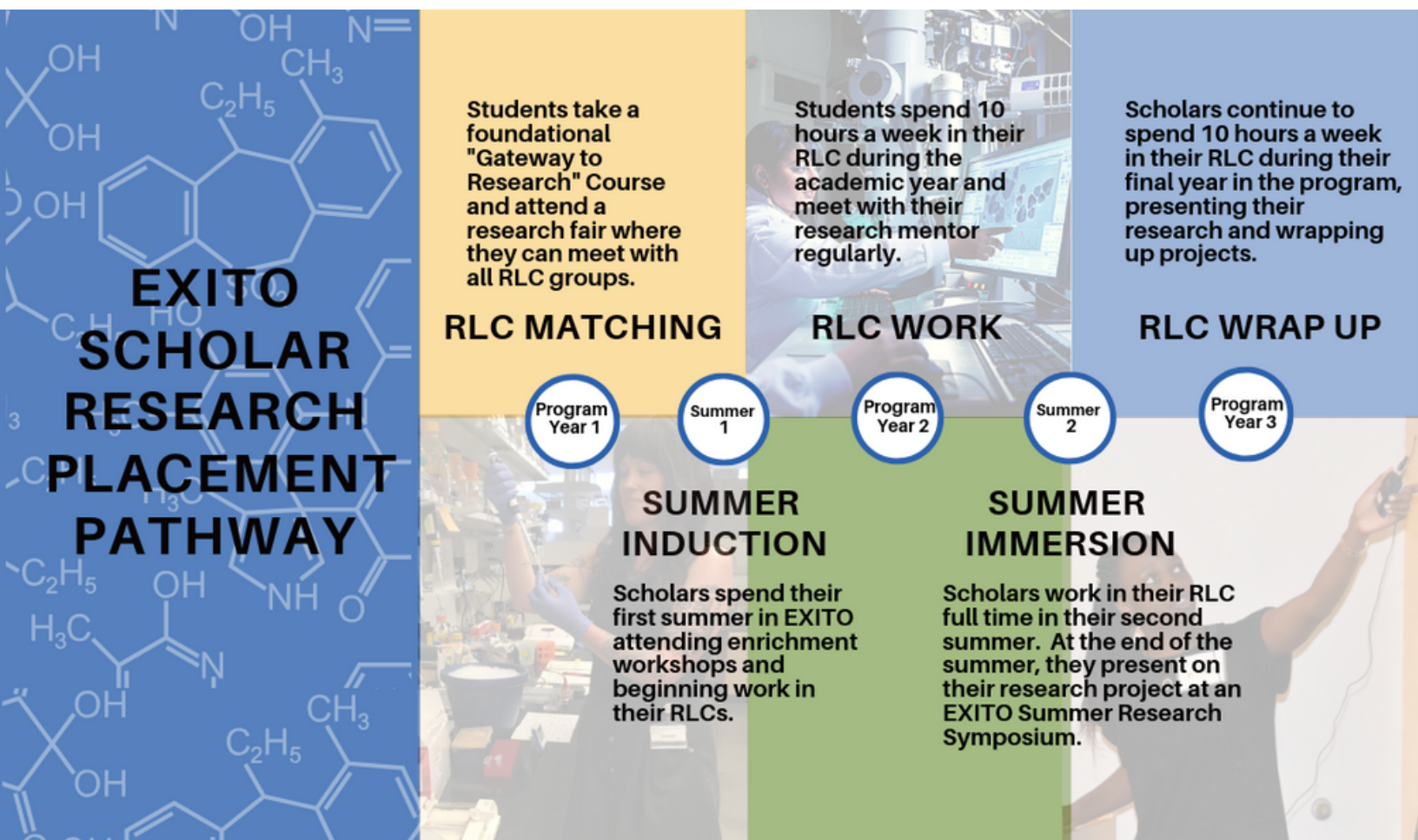
www.pdx.edu/exito

The EXITO Model:

Matching Scholars in long-term developmental research learning community placements

A centerpiece of the BUILD EXITO program is the opportunity for Scholars to gain research experience as contributing members of Research Learning Communities (RLCs) headed by leading researchers.

- RLCs engage undergraduate students in meaningful research activities on externally-funded, faculty-directed studies across a range of health-related fields.
- RLCs vary in structure and composition, often including an investigator who collaborates with other colleagues, such as faculty co-investigators, fellows, post-docs and graduate students.
- Scholars are embedded within these mentor-rich communities in paid internship placements to work as part of the research team and spend concentrated time working during the summer and academic year to observe, learn and contribute to important research projects.



MEET A RESEARCH LEARNING COMMUNITY



The Mackiewicz lab consists of modern-day explorers of the molecular world and architects of nanoscale materials. They focus on the development of nanostructured materials for applications that relate to human health, the environment and energy. EXITO has helped Dr. Mackiewicz to develop stronger mentorship skills that enabled her to fully support URM students interested in a scientific career. She has also been able to help other EXITO mentors by sharing mentoring and research approaches with them and learning from their stories and successes.

What motivates RLC mentors?

At OHSU, out of 37 respondents, **100%** stated that increasing the diversity of their lab was a key reason for participating in EXITO.



MEET OUR SCHOLARS



Sulema Rodriguez started stuttering at six years old which eventually led her to study the brain processes and potential epigenetic components of stuttering. She has traveled to schools all over Oregon to speak talk about her experience as a stutterer and **her love for scientific research.** "Growing up, I thought science was only attainable by a select few. Through great mentors and volunteering, I have gained confidence and I feel like it is possible for me. I believe that outreach has the ability to cultivate diversity...making science accessible to everyone, regardless of who you are."



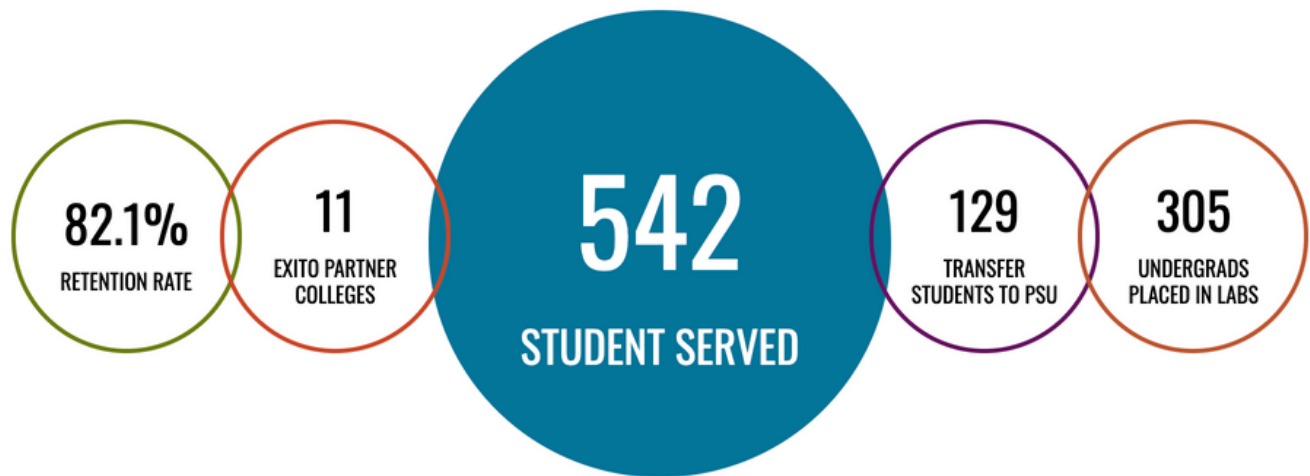
Maria Dizon transferred to PSU from Northern Marianas Community College. "As an island girl from such a small place, science opportunities were scarce. I didn't know this was possible. I now research brain development and neurobiology at Oregon Health & Science University. **I am a scientist!**"

"Growing up, I thought science was only attainable by a select few. Through great mentors and volunteering I have gained confidence and I feel like it is possible for me."



Heather Hamilton had just begun pursuing neuropsychology when she was hit by a car and wound up in the trauma ICU at OHSU. She now works in a lab at OHSU led by Martin Schreiber, M.D., chief of trauma, critical care and acute care surgery and one of the doctors who saved Heather's life in 2013 said, "Heather is a fabulous example of the power of a mature trauma system, which spans all the way from the prehospital setting to recovery after trauma," said Schreiber. **"I feel motivated to work hard because these people believe in me,"** Heather said. **"It's just changed everything."**

A LOOK AT THE NUMBERS



Students placed in **153** different research teams

403 peer, faculty, and research mentors matched with students

60 scholars authoring **90** peer-reviewed scientific publications

156 scholars giving **353** presentations or posters at scientific conferences.

"Thanks to EXITO, I feel confident to call myself a female scientist and researcher - something I never imagined I would be able to say. I am now educated, supported, and fully prepared to achieve every goal that I have set my mind to. I have had the most incredible life experiences because I took the chance to move somewhere new, and EXITO was there to support me every step of the way."

- Ariane Audett (EXITO Alumnus)

PSU, EXITO, AND OHSU PARTNERSHIP



Partnership Highlights

Oregon Clinical & Translational Research Institute (OCTRI) is a catalyst for scientific collaboration, translation of biomedical advances into the community, innovation, and research growth. Their mission is to improve human health by enhancing clinical and translational research.

We Are Healers is a non-profit initiative featuring stories of American Indian health professionals. They aim to inspire American Indian youth to envision themselves as dentists, nurses, pharmacists, physicians, etc. - all through stories of Native role-models. Through a wide reach and national partnerships, they are able to connect American Indian students with Native-centric programs proven to provide successful academic enrichment.

The Northwest Native American Center of Excellence at OHSU is working to comprehensively and sustainably address the health care needs of all people by increasing the Native American voice in the U.S. health professions workforce. They work to recruit, train and retain American Indians and Alaska Natives into health professions, train tomorrow's health professions workforce in American Indian and Alaska Native health issues, and enhance and expand tribal-academic partnerships in education, research, and service.

"EXITO was a great experience for me to understand how programs can provide a critical introduction to students from underrepresented and underserved backgrounds to research-intensive experiences, complete with the education and training needed to succeed in a biomedical or bio-behavioral career. I was grateful to be a part of the program's development and implementation, especially at the beginning when there were lots of questions about how to make this program effective and meaningful to the students partaking."

-Marguerite Matthews, former OHSU postdoctoral fellow and EXITO staff now a Policy Fellow at NIH, in the Division of Biomedical Research.

Oregon Health & Science University RLCs

Anupriya Agarwal, PhD
Jennifer Barton, MD
Raina Croff, PhD
Blair Darney, MPH, PhD
Melinda Davis, PhD
Matthew Drake, MD
Damien Fair, PA-C, PhD
Alex Foster, MPD, MD
Erick Gallun, PhD
Melanie Gillingham, PhD
Beth Habecker, PhD
Emily Henkle, PhD, MPH
Monica Hinds, PhD
Holly Hinson, MCR, MD
Willi Horner-Johnson, PhD
Sonnet Jonker, PhD
Sarah Karalunas, PhD
Bory Kea, MD, MCR
Marissa Kellogg, MD, MPH
Allison Lindauer, PhD
Laurie King, PhD, PT
Todd Korthuis, MD, MPH
Nora Gray, PhD
Derek Lam, MD
Miranda Lim, MD, PhD
Kristin Mackiewicz Seghete, PhD
Martina Mancini, PhD
Lisa Marriott, PhD
Bonnie Nagel, PhD
Suzanne Mitchell, PhD
Ryan Olson, PhD
Angela Ozburn, PhD

Cynthia Perry, PhD, FNP-BC
Andrew Riley, PhD
Melanie Fried-Oken, PhD, CCC/Sp
Sandra Rugonyi, PhD
Jon Purnell, MD
Trauma Research Lab
Steven Shea, PhD
Rebecca Skalsky, PhD
Eric Simpson, MD, MCR
Amala Soumyanath, PhD
Peter Steyger, PhD
Olena Taratula, PhD
Alan Teo, MD, MS
Jeff Tyner, PhD
Anna Wilson, PhD
Kerri Winters-Stone, PhD
Randy Woltjer, MD, PhD
Melissa Wong, PhD
Katharine Zuckerman, MD, FAAP
Jing Xu, PhD

Portland State University RLCs

Karlynn Adams-Wiggins, PhD
Daniel Ballhorn, PhD
Jennifer Blakeslee, PhD, MPH, MSW
Deanna Britton, PhD
Mitch Cruzan, PhD
Justin Courcelle, PhD
Amy Donaldson, PhD
Suzanne Estes, PhD
Gerasimos Fergadiotis, PhD
Linda George, PhD
Andrea Goforth, PhD

Melissa Haeffner, PhD
Alex Hunt, PhD
Dirk Iwata-Reuyl, PhD
Jun Jiao, PhD
Maria Kapantzoglou, PhD
Sarah Key-DeLyria, PhD
Ericka Kimball, PhD, MPH, MSN
Deborah Lutterschmidt, PhD
Marilyn Mackiewicz, PhD
Eric Mankowski, PhD
Megann McGill PhD
Brooke Napier, PhD
Christina Nicolaidis, MD, MPH
Roberto Orellana, PhD, MPH, MSN
Mary Oswald, PhD
Jason Podrabsky, PhD
Rahul Raghavan PhD
Dora Raymaker, PhD
Steve Reichow, PhD
Olyssa Starry, PhD
Samuel Sennot, PhD
Dara Shifrer, PhD
Erin E. Shortlidge, PhD
Martin Swobodzinski, PhD
Carolyn Quam, PhD
Jeffrey Singer, PhD
Ken Stedman, PhD
Christof Teuscher, PhD
Anne Thompson, PhD
Eric Wan, PhD
Mark Woods, PhD
Heyeoung Woo, PhD

The logo for BUILD EXITO features a stylized graphic of three interlocking puzzle pieces in blue, green, and yellow on the left. To the right of the graphic, the word "BUILD" is written in a light green, sans-serif font, and the word "EXITO" is written in a dark blue, sans-serif font. The entire logo is set against a white background.

BUILD EXITO

Learn more at
pdx.edu/exito

