

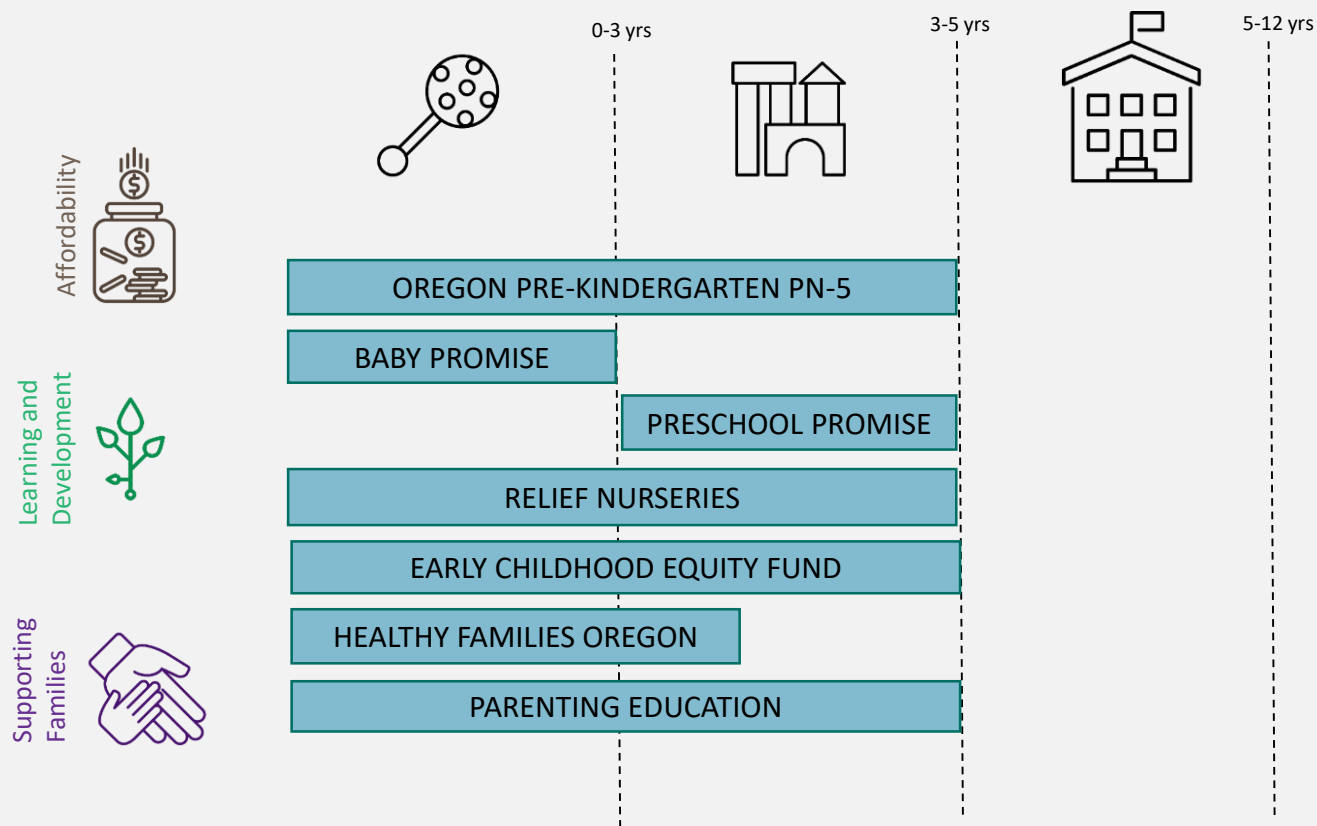


Early Learning Program Expansion (POP 402): Joint Ways & Means Subcommittee on Education

May 26, 2021



Early Learning Programs





Program Expansion

Program Name	Total Slot Expansion	Total Funding
Preschool Promise	3,192	\$64M
Oregon Pre-kindergarten Pre-natal to Three (I.e., Early Head Start)	185	\$6M
Oregon Pre-kindergarten (Expands half day to full day)	2,200	\$30M
Early Childhood Equity Fund	1,000	\$3M
Parenting Education	1,000	\$2M
Healthy Families Oregon	423	\$4M
TOTAL	8,000	\$109M

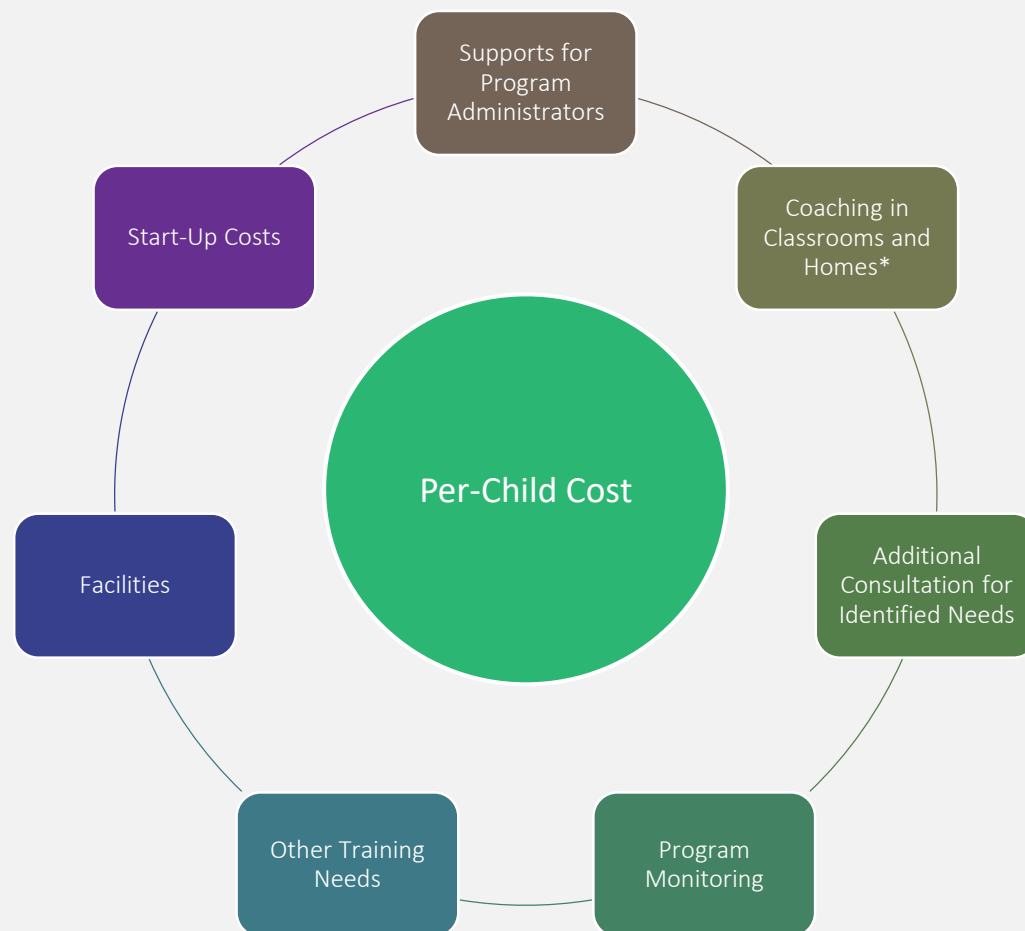


Program Expansion – Slot Roll Out

	Preschool Promise	Oregon Pre-K PN-3	Oregon Pre-K 3-5	Equity Fund	Parenting Education	HFO
2021-22 PY	+480	+80	+215	+116	+0	+0
2022-23 PY	+2712	+105	+1985	+884	+1000	+423
TOTAL NEW	3192	185	2200	1000	1000	423
OVERALL TOTAL	7000	1152	8000	2064	2000	1700



Program Expansion - Supports





Budget Impacts

Slots increases are largely concentrated in year 2 of the 21-23 biennium:

- 891 slots in year 1 of the biennium = \$13.2m
- 7109 additional slots in year 2 of the biennium = \$95.8m

Slots increases would span 2 years for 2023-25 biennium:

- Funding 2 years at the 8,000 additional slot rate



Investment Priorities

	\$25M		\$50M		\$75M		\$109M	
	SLOTS	COST	SLOTS	COST	SLOTS	COST	SLOTS	COST
PSP	750	\$ 13,092,750	1650	\$ 28,804,050	2525	\$ 44,078,925	3672	\$ 64,102,104
OPK (PN-3)	250	\$ 5,500,000	265	\$ 5,830,000	265	\$ 5,830,000	265	\$ 5,830,000
OPK (3-5)	400	\$ 4,976,800	1100	\$ 13,686,200	1815	\$ 22,582,230	2415	\$ 30,047,430
ECEF	0	\$ -	0	\$ -	0	\$ -	1116	\$ 3,491,964
Parenting Ed	525	\$ 1,050,000	575	\$ 1,150,000	800	\$ 1,600,000	1000	\$ 2,000,000
HFO	50	\$ 415,000	60	\$ 498,000	100	\$ 830,000	423	\$ 3,510,900
TOTAL	1975	\$ 25,034,550	3650	\$ 49,968,250	5505	\$ 74,921,155	8891	\$ 108,982,398



Supporting Expansion

- Overall Supply
 - Preschool Promise relies on child care supply overall, but currently there is sufficient supply to continue to expand statewide
- Workforce
 - Salary requirements and higher likelihood of benefits make it easier for publicly-funded programs to find staff
 - Programs without requirements will struggle to expand (HFO)
 - Professional Learning Account will allow for us to continue to address future workforce barriers
- Facilities
 - Barrier to larger expansion in Oregon Prekindergarten and for existing PSP providers to take on more slots
- Regional Supports
 - Hubs working already on new procedures to convene communities and identify program expansion partners



Program Impacts: COVID-19

- In-person services
 - Differed by program - no in-person Home Visiting and very little in person OPK
 - Many programs opted for virtual services
 - Some Preschool Promise providers opted for hybrid services rather than in-person
- Enrollment
 - Similar patterns to Kindergarten enrollment
 - No current patterns by region – some providers at 100% enrollment and others around 60-70%



Program Impacts: Expansion

- Effects of COVID-19
 - At the proposed level of expansion, the ability to expand will not be impacted by COVID-19
 - Public funding had a significant positive impact on stability of programs and more programs have expressed interest in gaining state funding



Thank you
