

Oregon's Wildfire Cleanup Response

Senate Committee on Natural Resources &
Wildfire Recovery

MAC LYNDE, Director, ODOT Debris Management Task Force

Monday, May 17, 2021

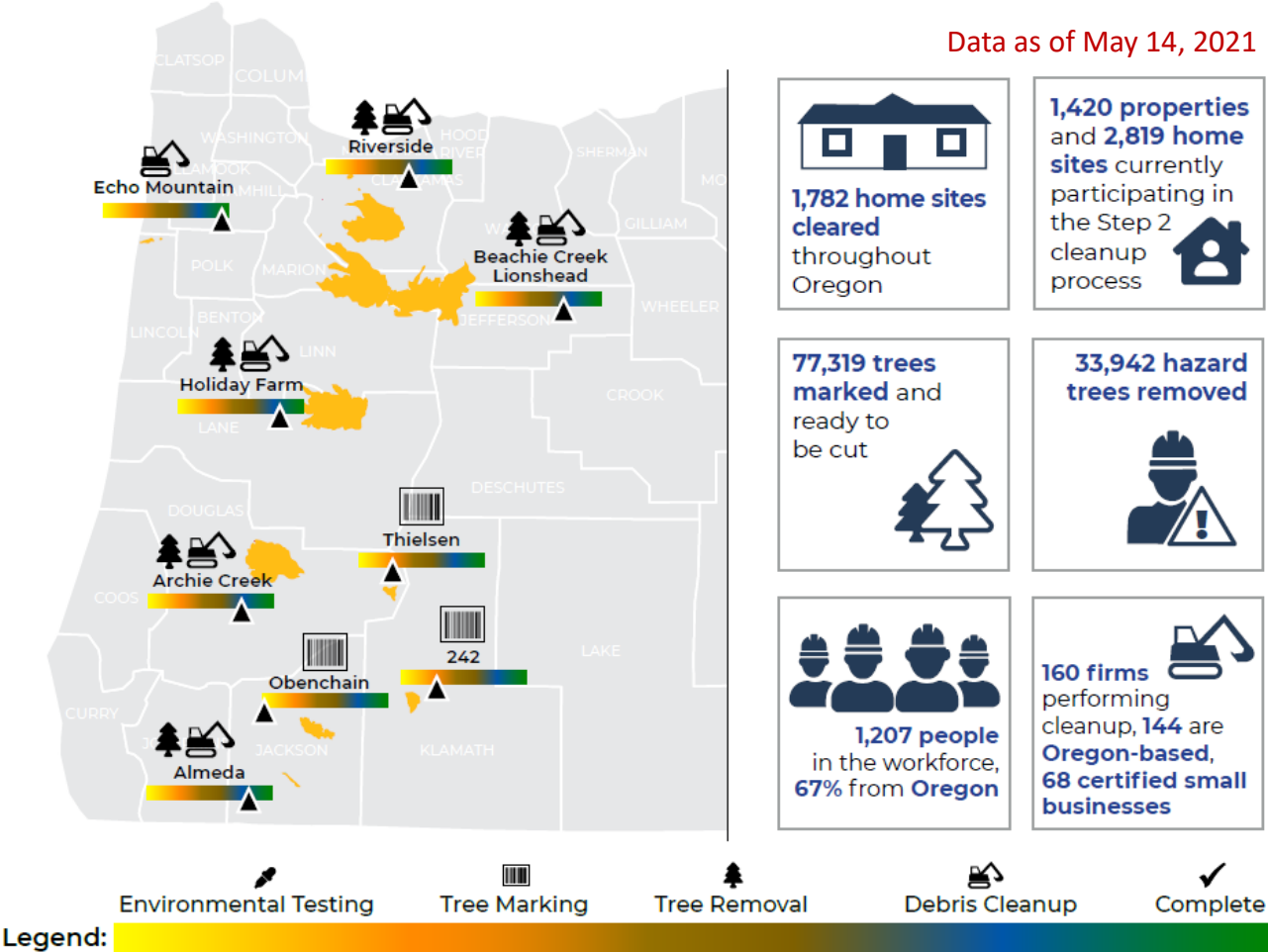


OREGON
Debris Management
Task Force



SCOPE & SCALE: 8 counties

Debris and hazard tree removal work is underway in 8 fire-impacted Oregon counties. Total ODOT/Task Force tree removal work accounts for less than 1% of burned fire area.



AN ADAPTIVE EMERGENCY RESPONSE OPERATION

Quality control and steps underway

- Hired independent arborist/forester to evaluate program
- Working with Secretary of State as part of annual audit plan
- Ongoing internal reviews, monitoring firm doing the same
- Three-step field review process following required criteria
- Contractual checks-and-balances: separation of duties, fines
- Additional oversight in the field
- Discussions with property owners who testified
- Proactive calls to property owners prior to marking
- Thorough data tracking
- Ongoing collaboration with local, state, and federal agencies, including OWEB and others



INDEPENDENT ARBORIST HIRED FOR REVIEW

30 years of Pacific NW experience, a national leader
in hazard tree analysis

- Contract finalized May 12, work begins this week
- Brings more than 30 years of professional arborist and forestry experience, including expertise in post-fire evaluations and hazard tree assessments
- Tasked with reviewing program criteria, crew qualifications, and process
- A fast timeline: will provide review and findings report in early June
- Will provide an additional level of quality control oversight on the ground



SAFETY TREE CUTTING

Our mission: we do not want to remove any more fire-damaged trees than absolutely necessary

- *Optional* tree cutting not underway as characterized
- Called *safety trees* due to access issues and dangers presented to crews and the roadway when a dead or dying hazard tree becomes entangled or intertwined with another tree
- Many solutions are underway to mitigate. When possible, cranes, helicopters, and strategically creating access to other hazard trees decreases need to remove safety trees on landscape



OUR HOTLINE 503-934-1700

We're here to help. A direct line for Oregonians.

- **More than 10,000 calls** since December 2020. 50% outgoing, 50% incoming
- **Of all total calls, 4% hazard tree-related** about trees on properties and how the process works
- **Hotline number promoted on all materials**, letters and mailers, paid notices and public service announcements, community events, media outreach, state and county social media accounts, statewide e-newsletters, field fliers, all printed and digital channels, and others
- **Extensive promotion efforts will continue** at both state level as well as with county partners
- **A call for all Oregonians and others to help share** with their neighbors and communities



STAY CONNECTED



HOTLINE 503-934-1700

wildfire.oregon.gov/cleanup
www.DebrisCleanupNews.com
odot.wildfire@odot.state.or.us