

Assessing Water Quality Conditions in Oregon

2022 Assessment and Integrated Report

May 4th, 2021
House Committee on Water

DEQ Water Quality Division

Today's Topics

- Overview of Clean Water Act Framework
- Water Quality Standards
- Water Quality Assessment
- Efforts on 2022 Integrated Report



Clean Water Act Framework

Define WQ Goal



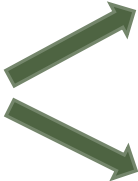
Adopt Water Quality Standards

Compile data & information



Monitor Waters Statewide

Assess Data against Water Quality Criteria



Report on Status of State Waters [305(b)]

Identify impaired waters [303(d) list]

Develop TMDLs

Implementation

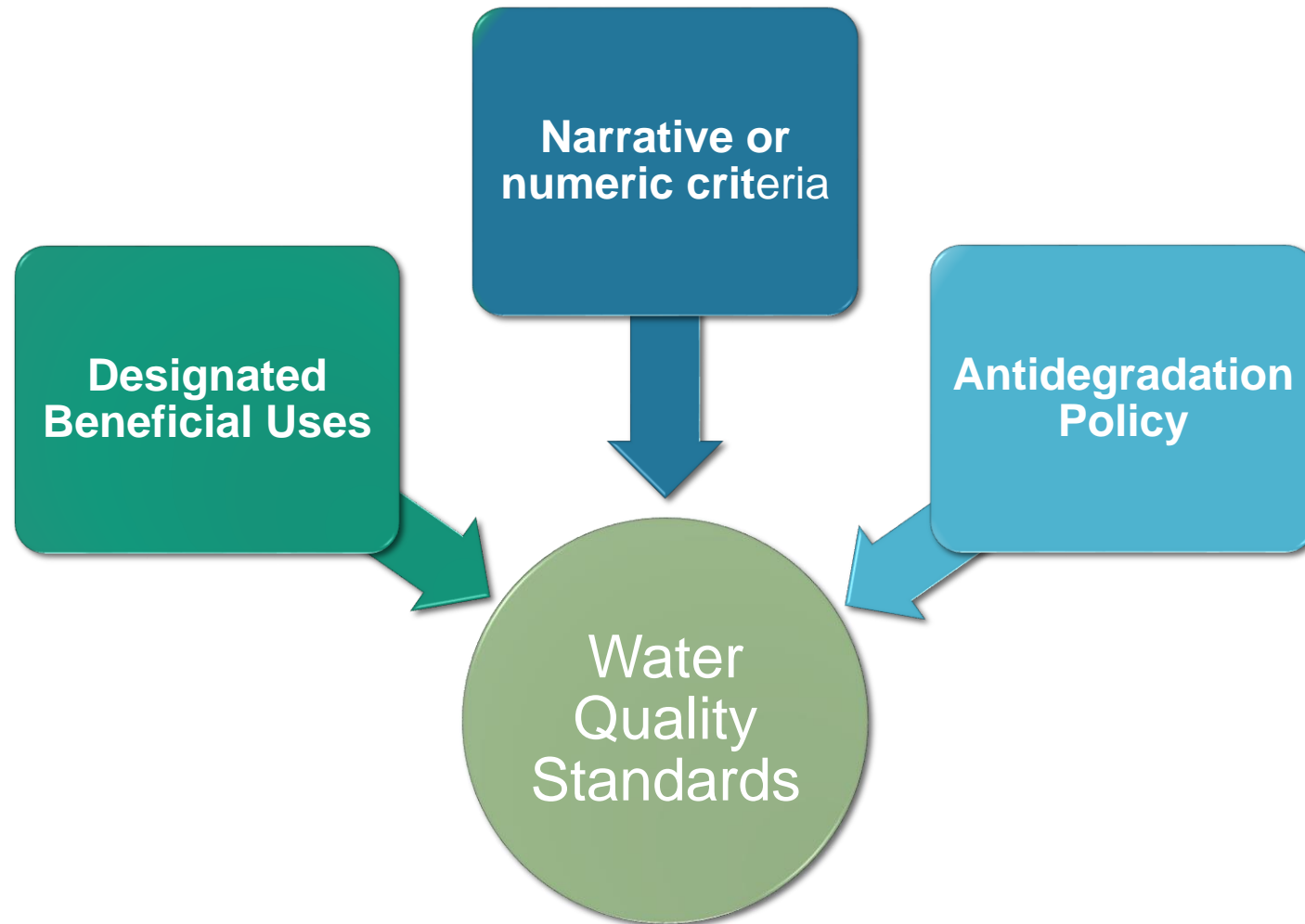


Point Source Control (Permits)

Nonpoint Source Control (Voluntary, BMPs)

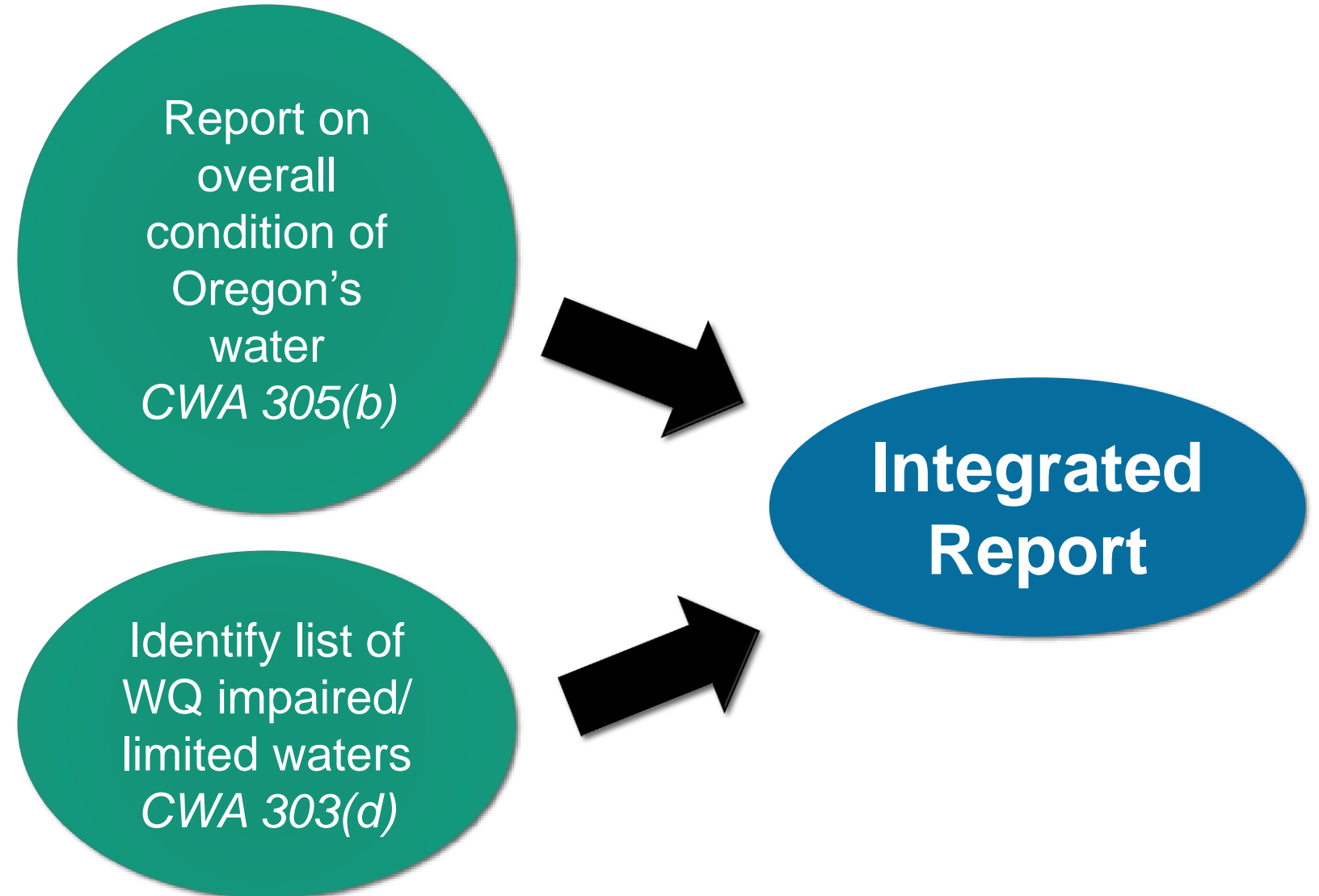


Water Quality Standards



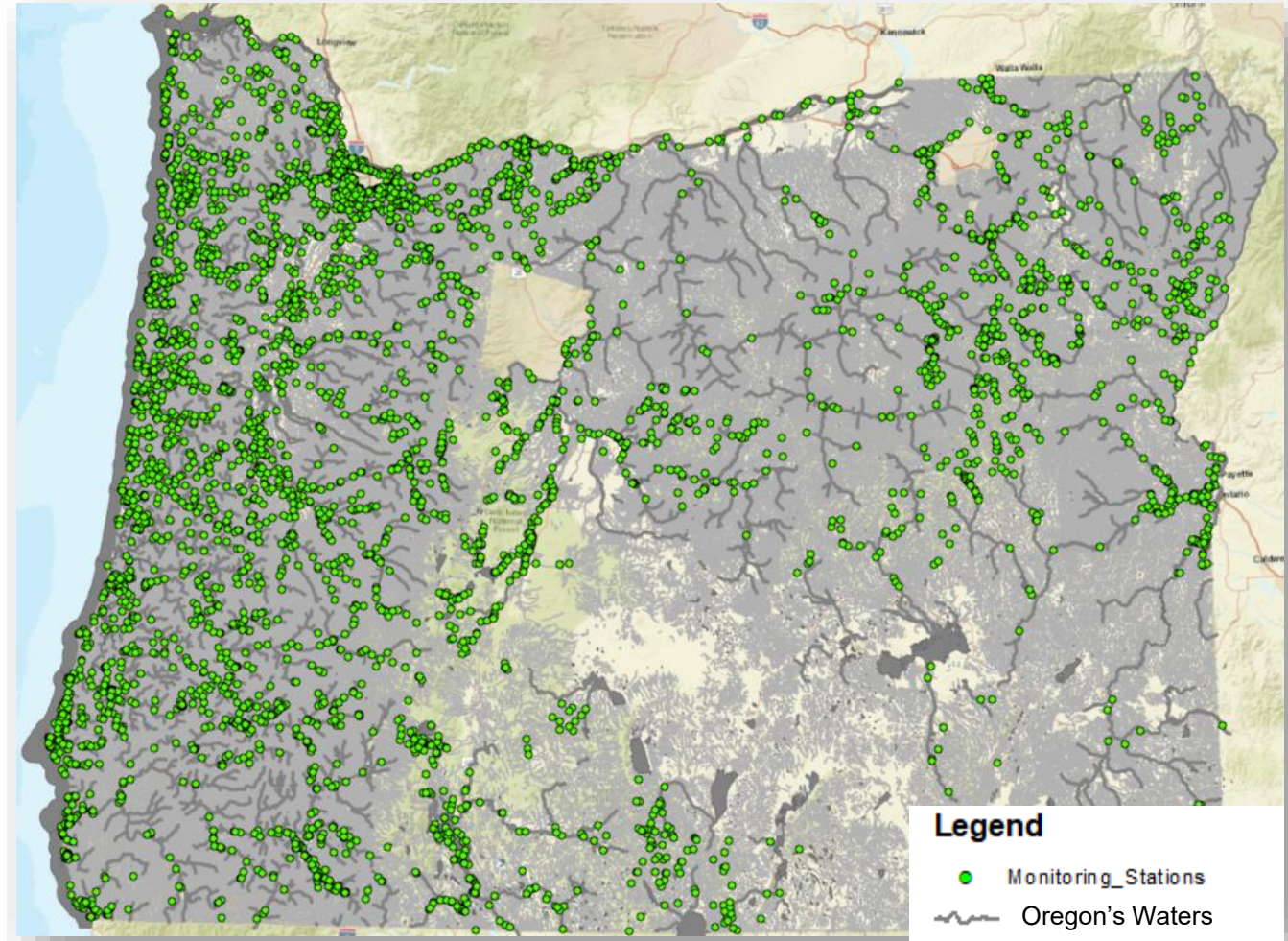
Water Quality Assessment

The Clean Water Act requires states to assess water quality every 2 years



Oregon's Integrated Report

- Assess all of Oregon's Waters
 - river/stream, lakes, reservoirs, estuary and territorial sea
- Develop Methodology
 - Interpret Water Quality Standards
 - Delineate reporting units (>7400 Assessment Units)
- Assemble all available high quality data
 - > 5800 monitoring stations
 - > 160 parameters
 - > 7 million unique results
- Report Results
 - Oregonians
 - U.S. EPA



Integrated Report - Requirements



Federal Requirements

- Assess Oregon's waters every two years:
 - Overall condition of Oregon's waters
 - Water quality impairment
 - Public comment on report
- Submit to EPA for approval



State Requirements

- Assess attainment of beneficial uses of Waters of the State
- Two step process
 - Methodology
 - Integrated Report
- Peer review of methodologies
- Public comment on methodology
- EQC briefing

2020 Process Improvements

- Modernized Infrastructure
 - data management
 - data processing
- Improved Process
 - efficiency, sustainability and consistency
 - expanded ability incorporate 3rd party data
 - on time reporting to EPA
- Increased Transparency
 - including access to data



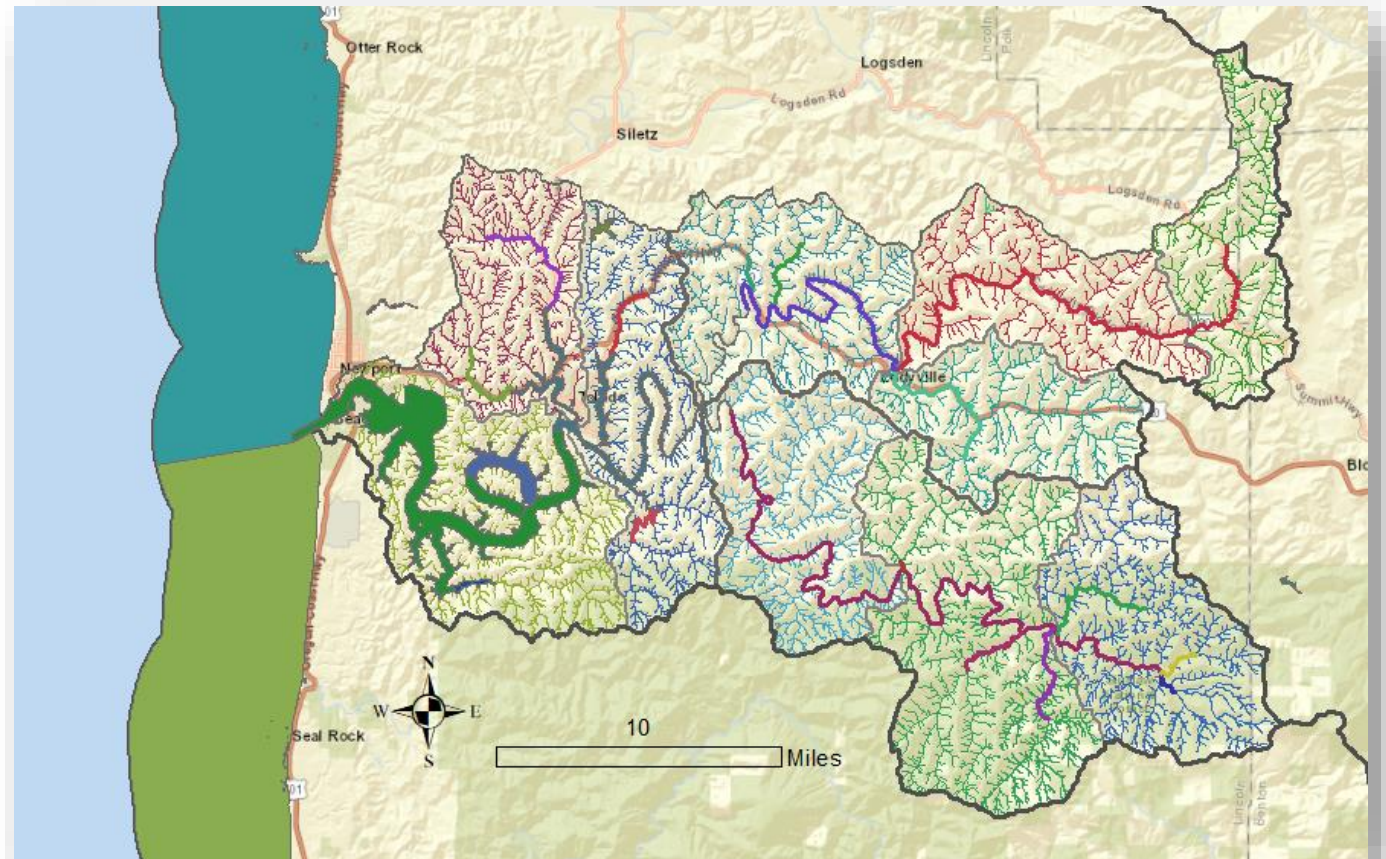
2020 Reporting Improvements

- Assessment Units

- Large River/Stream
- Lakes/Reservoirs
- Estuaries
- Coastline
- Ocean
- Watershed Units

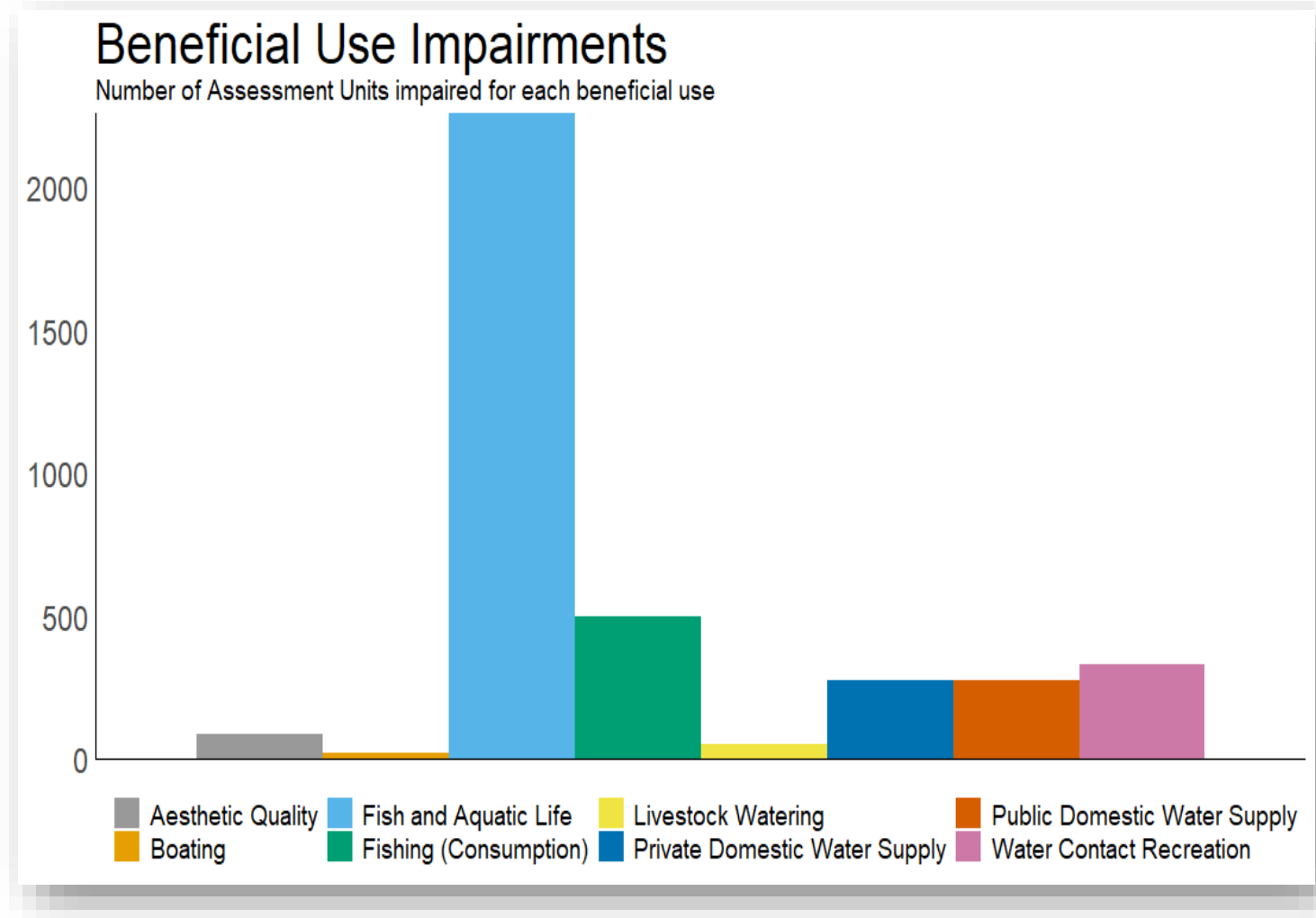
- Identify Impaired Uses and Pollutant Causes

- Fish and Aquatic Life
- Water Contact Recreation
- Fish Consumption

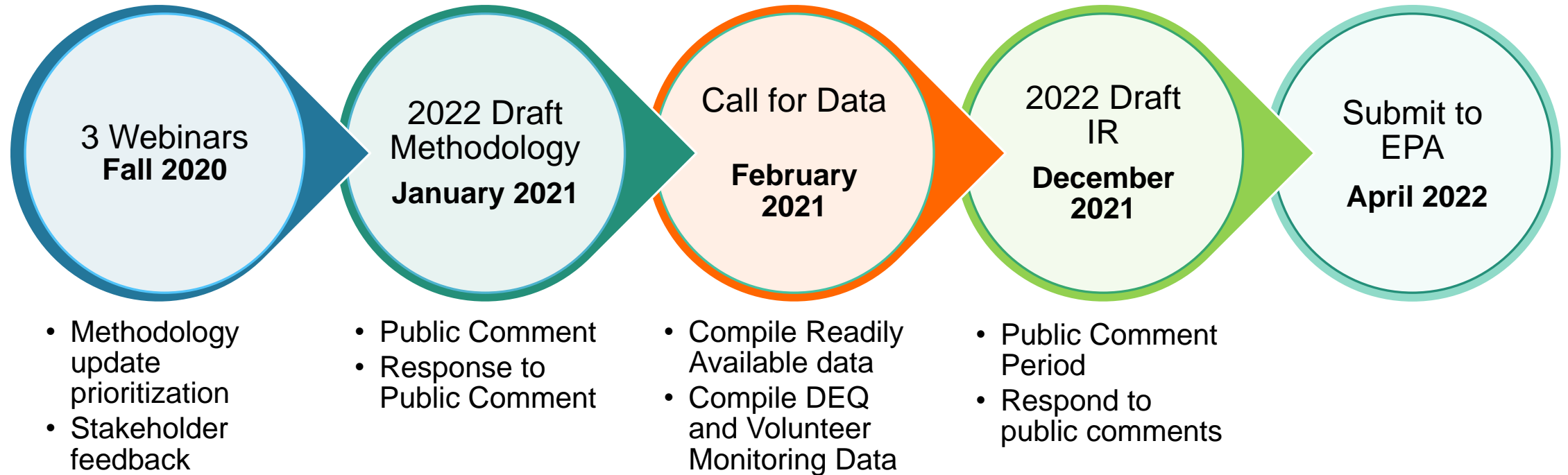


2020 Integrated Report Highlights

- First comprehensive Integrated Report since 2006
- Interactive maps and tools
 - range from general overview to raw data download
- Assessment of marine waters
- EPA's full approval in 2020



Integrated Report 2022 Schedule



Public Engagement for 2022 Report

- Draft Methodology
 - 3 webinars during development of methodologies
 - Informal input and comments
 - 45-day public comment period
- 60-day Call for Data
- Planned webinars for draft report release
- Public comment period for draft report



2022 Integrated Report – Enhancements

- Increased use of continuous data
 - marine waters
 - temperature, dissolved oxygen and pH
- Clarity of assessment conclusions at local scale
- Ability to track changes in water quality over time
- Ongoing improvements to data access and display



Questions?

Jennifer Wigal

WQ Deputy Administrator

Jennifer.Wigal@deq.state.or.us

503-229-5323

Becky Anthony

WQ Assessment Program Lead

Becky.Anthony@deq.state.or.us

503-378-5319

