



Celebrating Night Skies

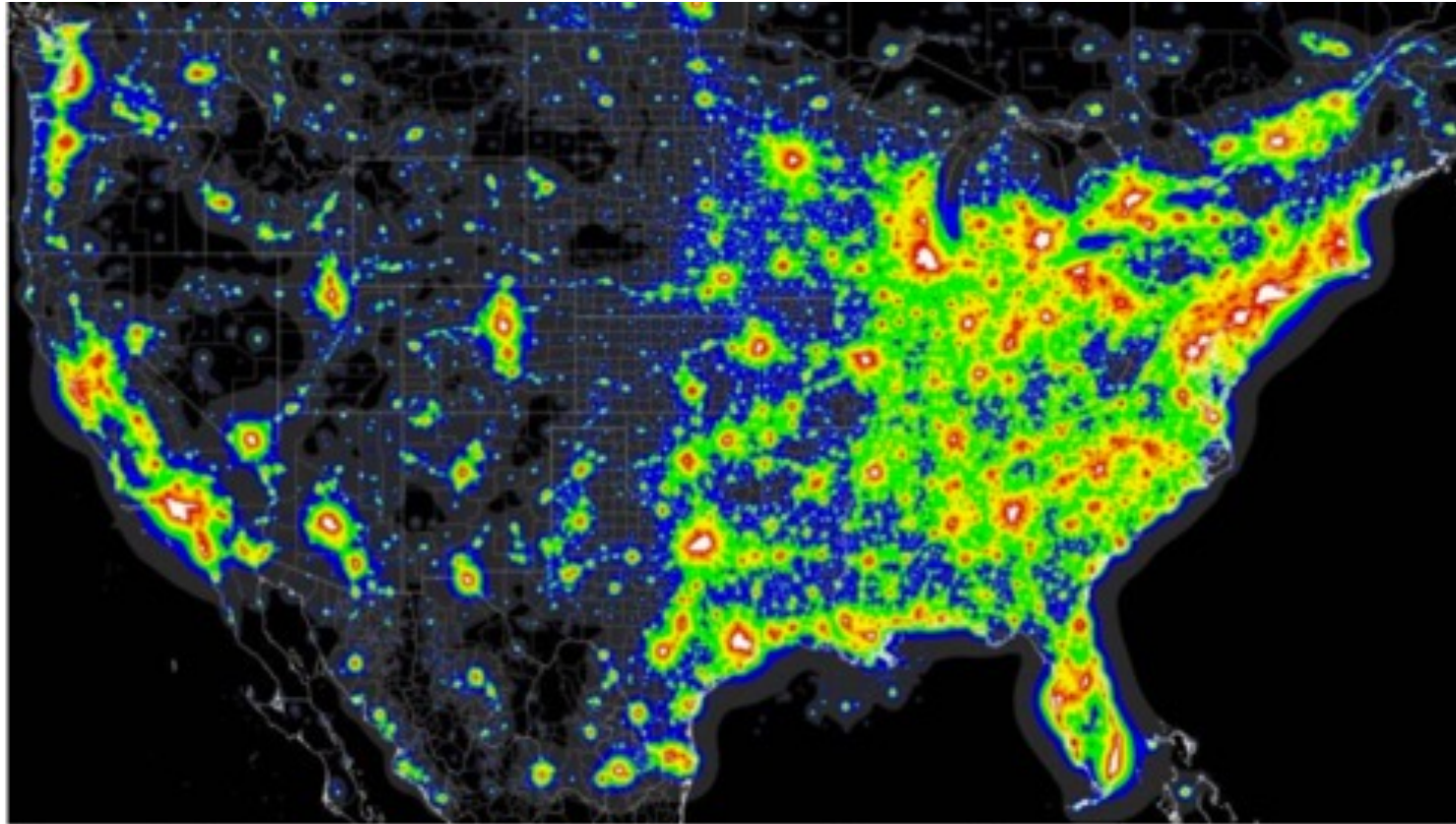


FIGURE 2. BORTLE CLASS MAP OF THE UNITED STATES (BLACK AREAS ARE DARKEST)

TRAVEL
SOUTHERN
OREGON

DO SOMETHING GREAT

International Dark Sky Association

Dark Sky Places

[ABOUT](#) [OUR WORK](#) [LIGHT POLLUTION](#) [LIGHTING](#) [TAKE ACTION](#) [WAYS TO GIVE](#) [RESOURCES](#) [BLOG](#) [CONTACT](#)



International Dark Sky Places

The International Dark Sky Places conservation program recognizes and promotes excellent stewardship of the night sky.

**TRAVEL
SOUTHERN
OREGON**

DO SOMETHING GREAT

Dark Sky Places in the U.S.

95 Dark Sky Places in U.S.

Communities (21)

Parks (66)

Reserves (1)

Sanctuaries (7)

Boundary Waters, Minnesota

Katahdin Woods, Maine

Cherry Springs, Pennsylvania

Llano River, Texas

Rappahannock Park, Virginia



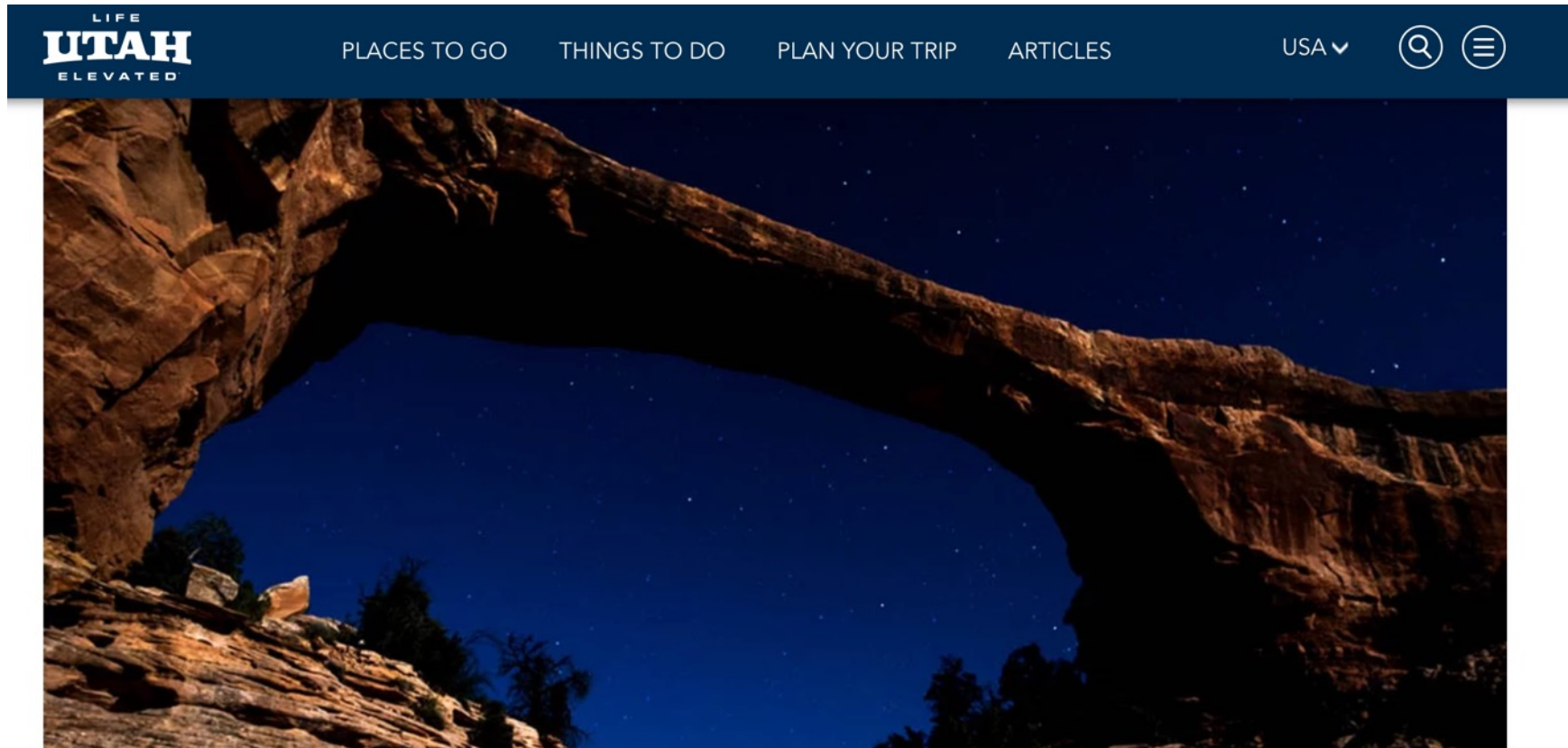
TRAVEL
SOUTHERN
OREGON

DO SOMETHING GREAT

Most Dark Sky Places are in the West



Utah Travel



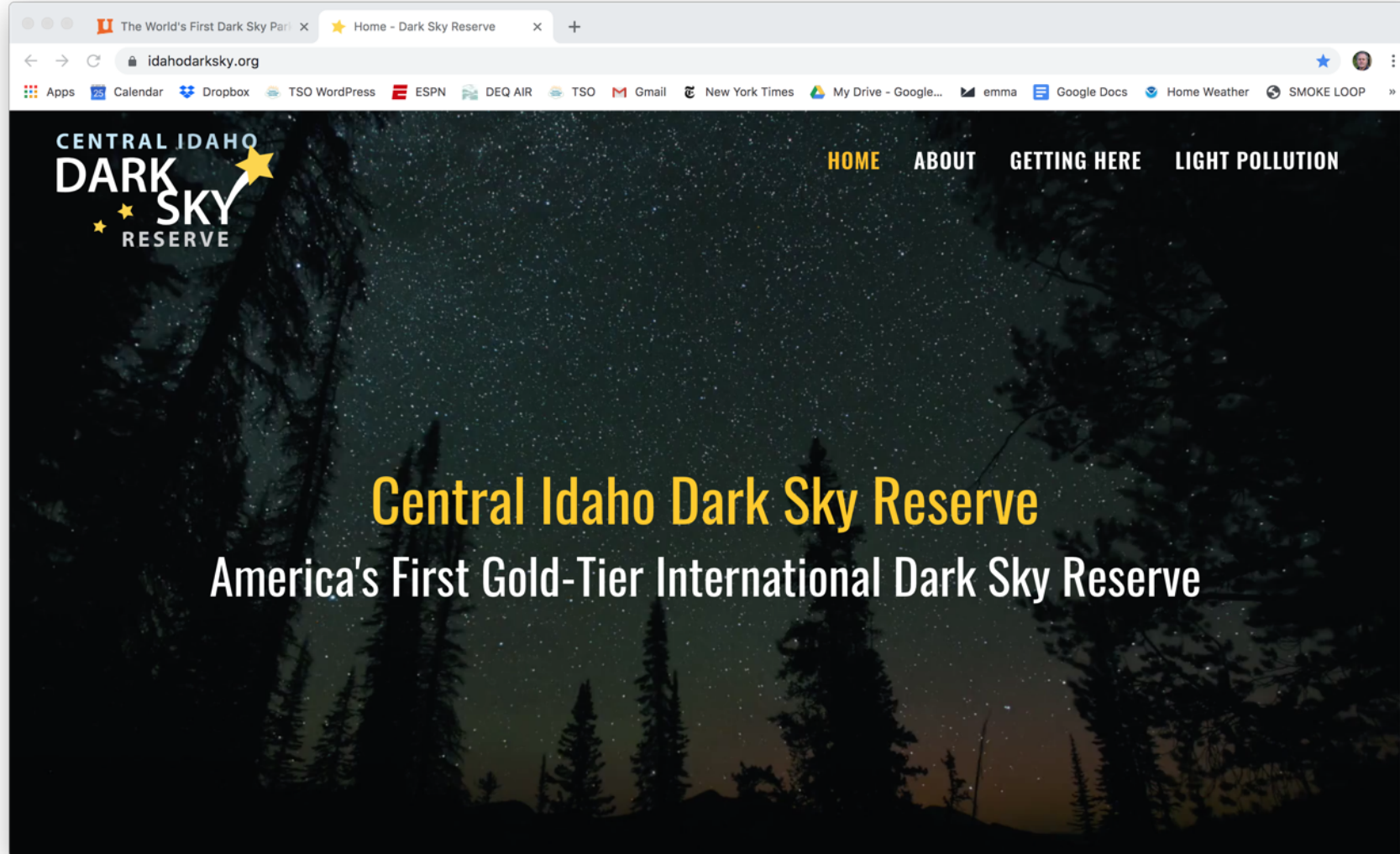
The World's First Dark Sky Park

More than 100,000 people visit [Natural Bridges National Monument](#) each year to check out the stunning bridges and hike in cool canyons. But only a handful of them stay through the night to see the area's most amazing and unique

TRAVEL
SOUTHERN
OREGON

DO SOMETHING GREAT

Central Idaho



TRAVEL
SOUTHERN
OREGON

DO SOMETHING GREAT

Colorado Plateau



TRAVEL
SOUTHERN
OREGON

DO SOMETHING GREAT

Great Basin Dark Sky Park

Other Astronomy Activities in the Park

Star Train

Great Basin National Park and the Nevada Northern Railway in Ely, NV are teaming up to offer the NNRW's *Star Train*! Riders begin their journey at the train station in Ely and ride the historic northern train route through Ely. Great Basin's dark sky rangers will be onboard to talk trivia, give out prizes, and answer questions. The train will stop out of town where passengers can disembark and look through high-powered telescopes to see planets, deep space objects, and more (weather permitting). The train will then return to the train station later that evening. **Tickets are required.** Go to [Nevada Northern Railway's website](#) to learn more about the train and reserve your spot. The trains sell out quickly.

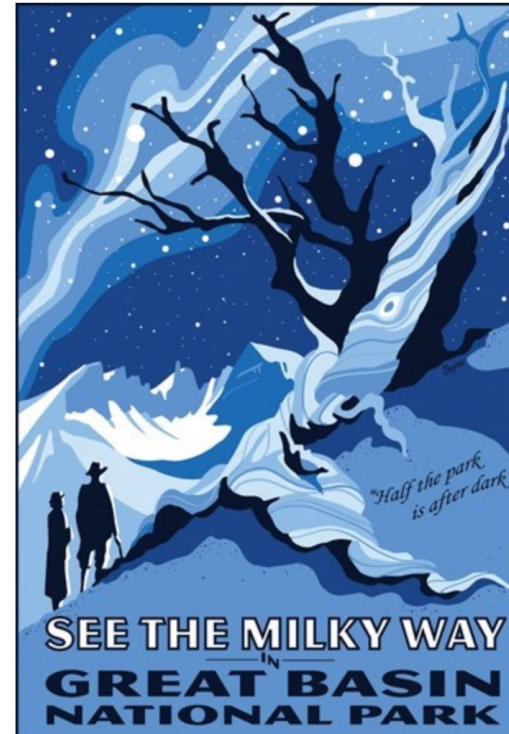
Please contact the Nevada Northern Railway at (775)-289-2085 for 2020 dates.

Full Moon Hike

On summer nights when the moon is too bright for our regular astronomy programs, join a dark ranger for a full moon hike! These highly popular hikes start just after sunset and traverse Great Basin under a moonlit sky. The program is free, but tickets are required. You can make reservations in person at the Lehman Caves Visitor Center. All participants who wish to attend **must** be present in the visitor center to be issued a ticket. Participants must be **at least** 8 years of age or older due to the strenuous nature of the hike. Please talk to a Ranger for more information.

Solar Telescope Viewing

On select summer afternoons, join us on the back porch of the Lehman Caves Visitor Center for safe solar telescope viewing of our closest star, the Sun! Great Basin has state-of-the-art solar telescopes to view sunspots, prominences, filaments, and magnetic storms.



Half the park is after dark

Dr. Tyler Nordgren

**TRAVEL
SOUTHERN
OREGON**

DO SOMETHING GREAT

Basin and Range Dark Sky Cooperative



Protect Natural Night Skies

The Basin and Range area has some of the best natural dark night sky viewing in the country. Help us preserve this resource.

TRAVEL
SOUTHERN
OREGON

DO SOMETHING GREAT

Why is Tourism at the Table?



TRAVEL
SOUTHERN
OREGON

DO SOMETHING GREAT

Colorado Plateau 2019 Tourism Data



“Non-local tourists who value dark skies will spend \$5.8bn over the next 10 years in the Colorado Plateau. These tourist expenditures will generate \$2.4bn in higher wages and create over 10,000 additional jobs each year for the region.”

Dark Sky Tourism: Economic Impacts on the Colorado Plateau Economy (September 2019)

**TRAVEL
SOUTHERN
OREGON**

DO SOMETHING GREAT

Colorado Plateau 2019 Tourism Data

Estimating Potential Economic Value

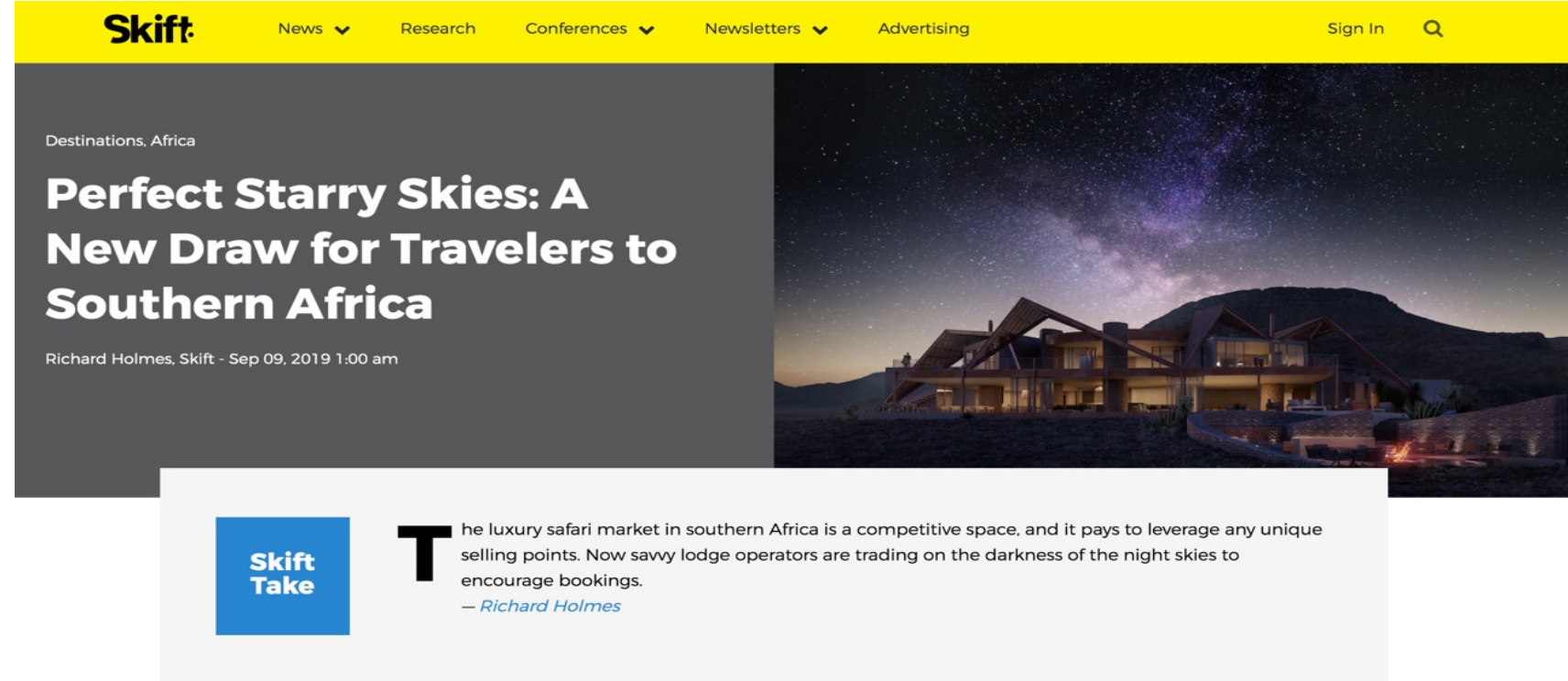
- Spending per party increase from \$90 to \$270-390 (day vs. overnight)
- Change represents an additional \$2.5 billion value added to Colorado Plateau economies over 10 years
- Increase the # of visitors during the off-peak seasons and provide a longer more sustained period of tourism activity

TRAVEL
SOUTHERN
OREGON

DO SOMETHING GREAT

Cultural Opportunities

“Instead of highlighting constellations dreamt up by the ancient Greeks lodge guides focus on the rich astral folklore of the Khomani San.”



TRAVEL
SOUTHERN
OREGON

DO SOMETHING GREAT

Oregon Outback Dark Sky Network

A voluntary grass-roots initiative to build an alliance of **communities, businesses, local governments, ranchers, state and federal agencies, tribes, and Oregon Outback night sky enthusiasts** to support a set of shared principles resulting in mutual community benefits and the long-term conservation of our starry night heritage.



TRAVEL
SOUTHERN
OREGON

DO SOMETHING GREAT

Night Sky Adventurer Kits



Available at County Libraries

Lake

Harney

Malheur

What's in Kit:

Sky Quality Meter

Night Sky Chart

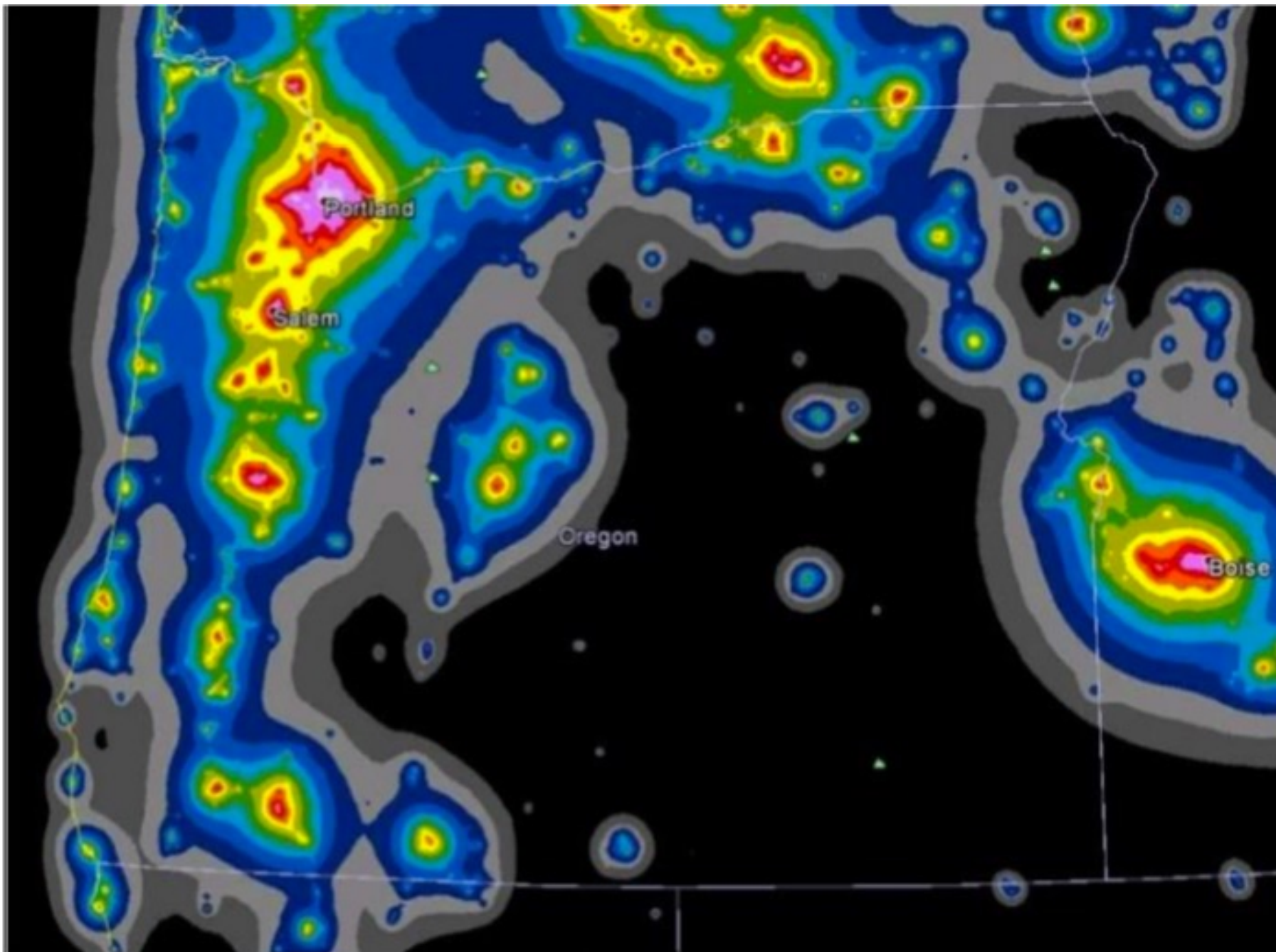
Night Flashlight

Log Book to record data



TRAVEL
SOUTHERN
OREGON

DO SOMETHING GREAT



TRAVEL
SOUTHERN
OREGON

DO SOMETHING GREAT