
Schools & Reopening

*House Committee on Health Care,
Subcommittee on COVID-19*

March 29, 2021

Dean Sidelinger, MD MEd
State Health Officer and State Epidemiologist

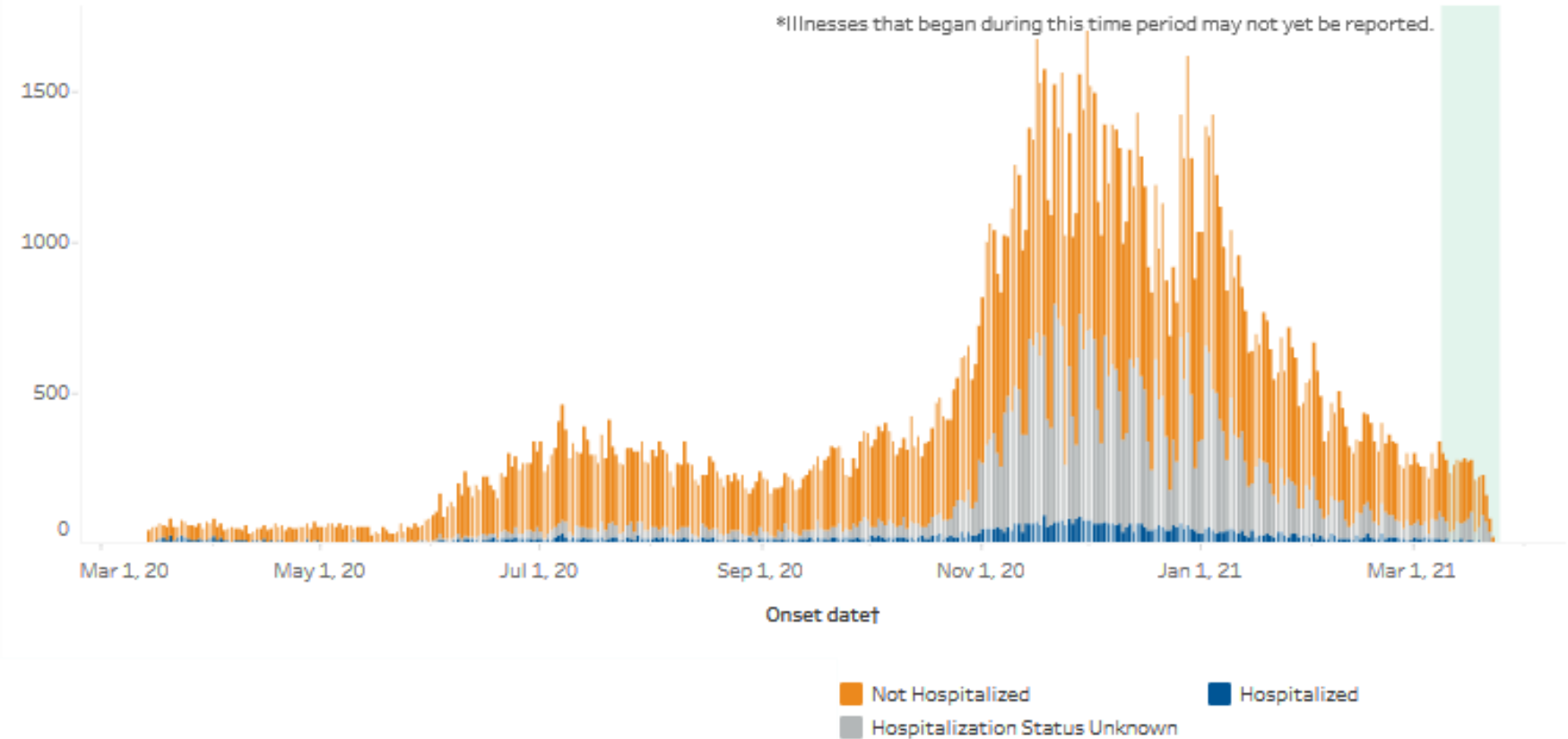


COVID-19 Cases in Oregon

Oregon's Epi Curve: COVID-19 cases

This chart shows the number of Oregonians who have been identified as COVID-19 cases and whether they were ever hospitalized for their illness.‡

Total Cases	Hospitalized	Not Hospitalized	Hospitalization Status Unknown
162,806	9,103	109,971	43,732

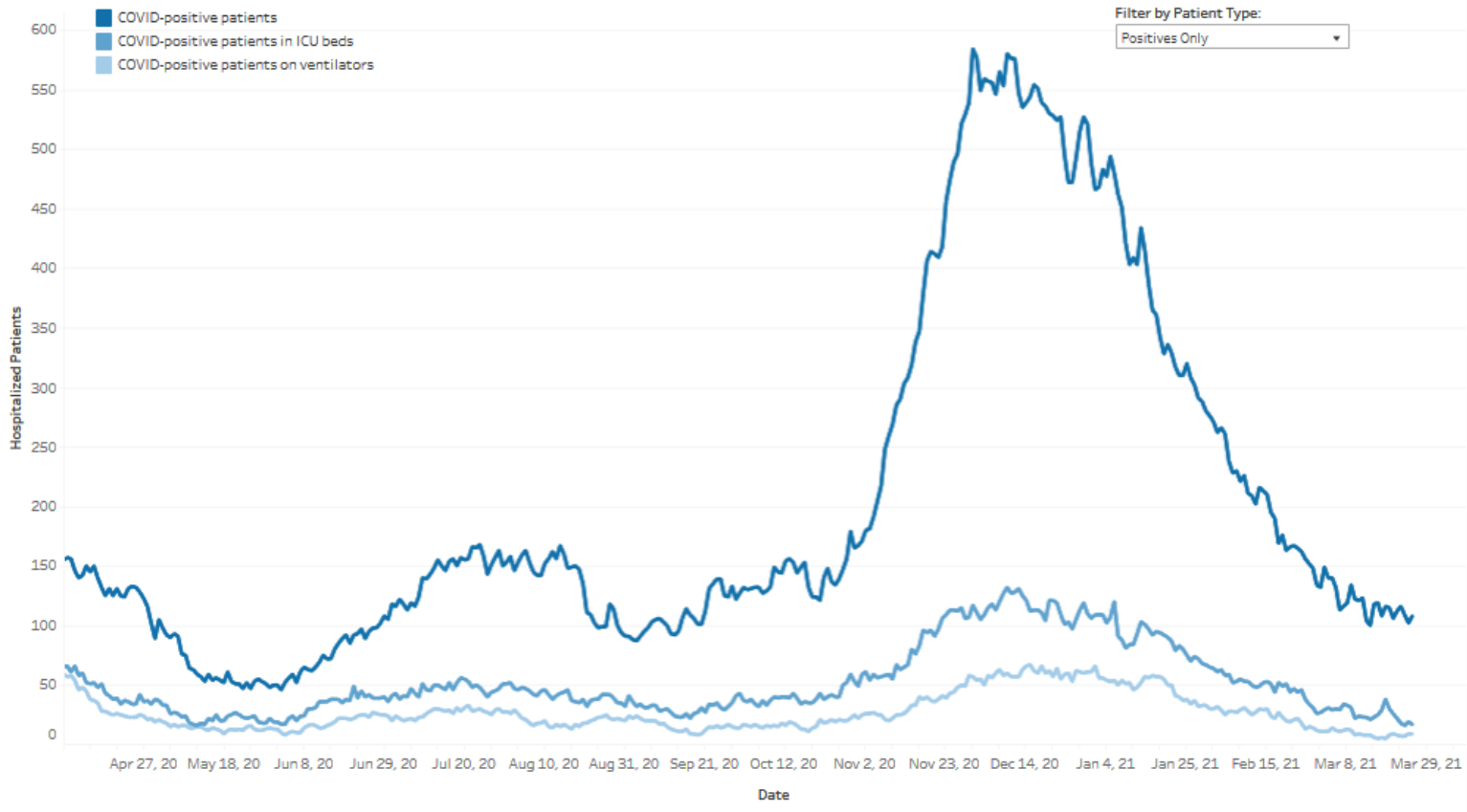


https://public.tableau.com/profile/oregon.health.authority.covid.19#!/vizhome/OregonHealthAuthorityCOVID-19DataDashboard/COVID-19EPICases?display_count=y&toolbar=n&origin=viz_share_link&:showShareOptions=false
Accessed 03.26.2021

Hospitalizations by Severity

Oregon's Hospitalization Trends by Severity

This chart shows daily COVID-19 hospitalizations and whether patients were in the ICU or on ventilators, as reported to Oregon's Hospital Capacity Web System (HOSCAP)¹. It initially displays only those who tested positive, but you can view all suspected or confirmed patients² using the dropdown menu below. Click on a legend item to highlight it in the chart (ctrl+click to select multiple items).



<https://public.tableau.com/profile/oregon.health.authority.covid.19#!/vizhome/OregonCOVID-19HospitalCapacity/BedAvailabilitybyRegion>
Accessed 03.26.2021

Weekly Trends

Summary Statistics For the Previous 6 MMWR Weeks - All

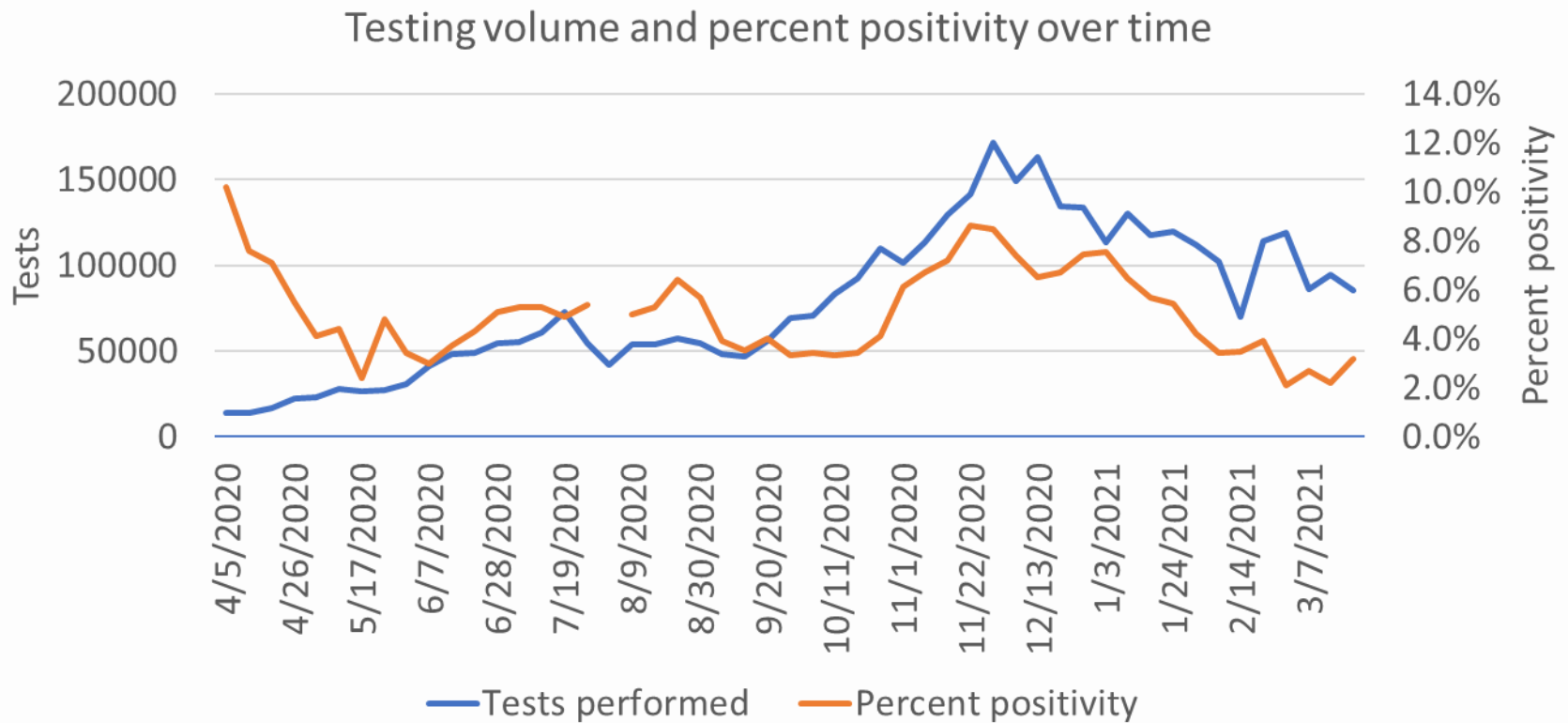
Week of True Case Date	Total New Cases	Average New Cases Per Day	% Cases Not Traced to a Known Source
2/14/21	2,592	370	48.9%
2/21/21	2,834	405	44.7%
2/28/21	1,745	249	48.3%
3/7/21	2,349	336	51.4%
3/14/21	1,970	281	52.6%
3/21/21	2,440	349	61.8%

https://tableau.dhsoha.state.or.us/t/OHA/views/InternalStakeholdersDashboardFinal/InternalDashboard?iframeSizedToWindow=true&:embed=y&:showAppBanner=false&:display_count=no&:showVizHome=no&:origin=viz_share_link#1

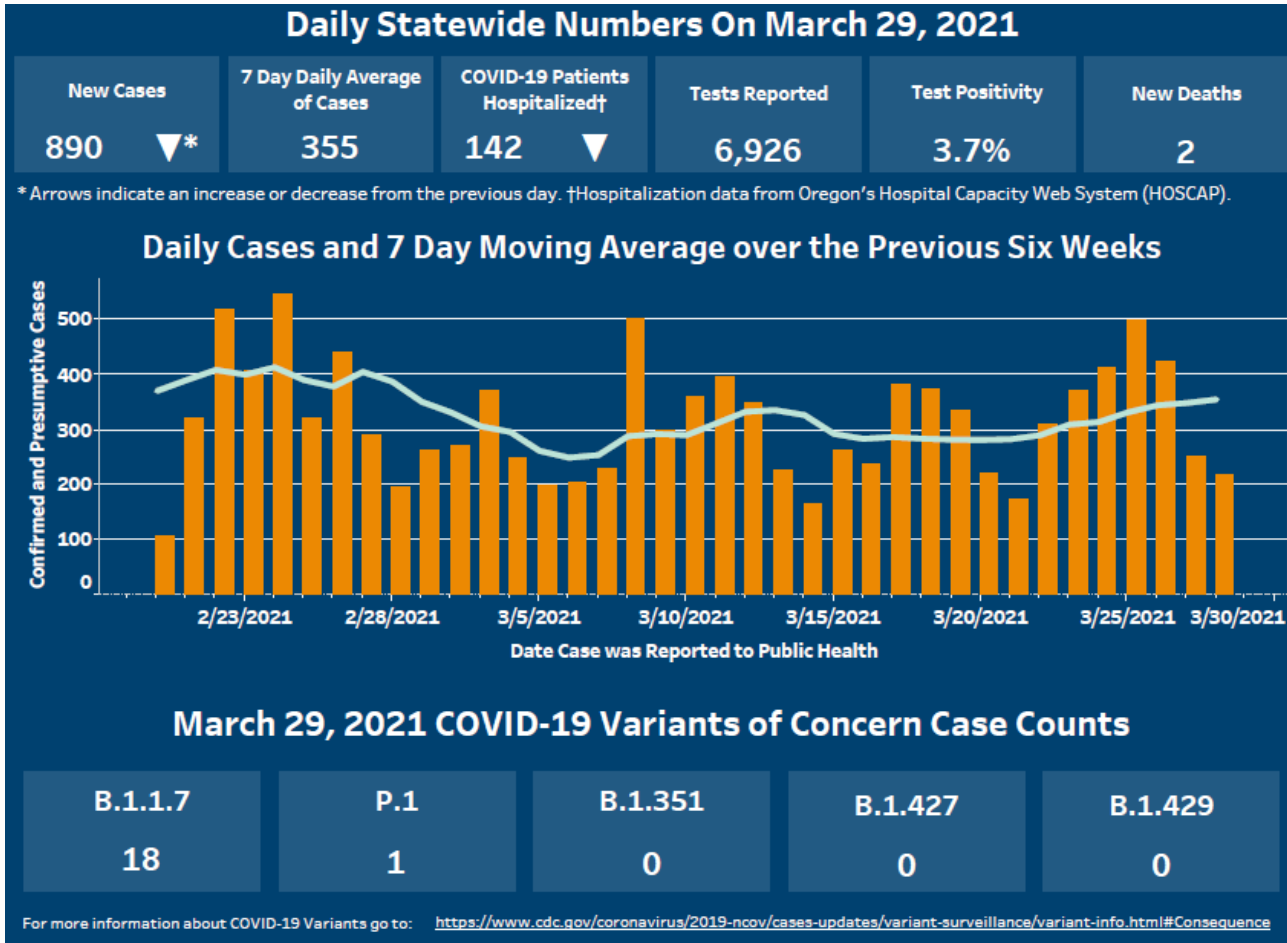
Accessed 03.29.2021

Testing volume trends

- From 3/21-3/27, estimated testing volume was 85,553 and **percent positivity was 3.2%** (goal $\leq 5\%$)

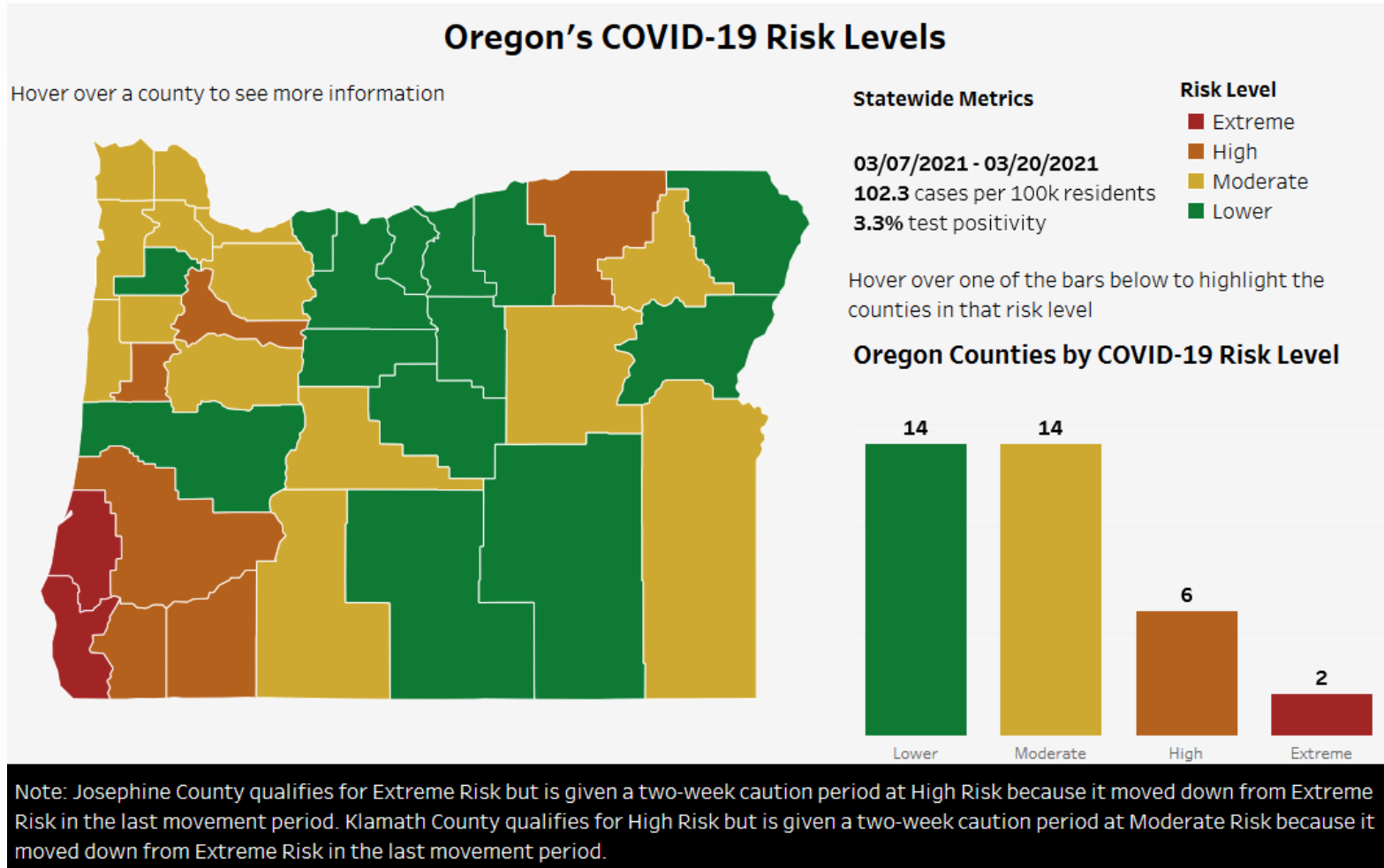


Daily Update



<https://public.tableau.com/profile/oregon.health.authority.covid.19#!/vizhome/OregonCOVID-19Update/DailyDataUpdate>
 Accessed 03.26.2021

COVID-19 Risk Levels by County



<https://public.tableau.com/profile/oregon.health.authority.covid.19#!/vizhome/OregonCOVID-19PublicHealthIndicators/Risk>
Accessed 03.29.2021

SCHOOL STATUS

School Operating Status

Number of Schools

Data current as of 3/22/2021

On-Site 355	Hybrid 614	CDL with Limited In-Person 411	Comprehensive Distance Learning 211	School Closed 15
------------------------------	-----------------------------	---	--	-----------------------------------

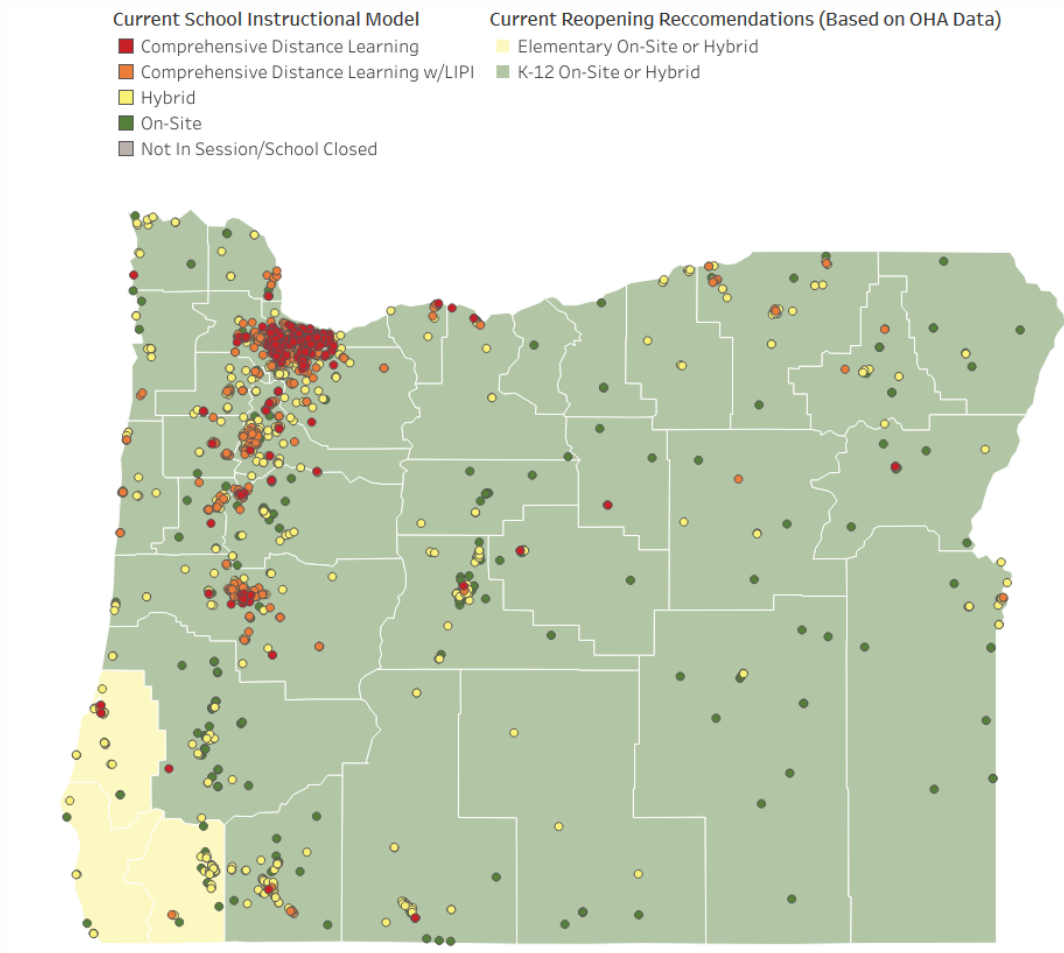
Use this dashboard to see your school's operating status and current county risk level. Select a county or type in your schools name below to zoom into the school's in that county. Selecting a county or school will also filter the table below.

The counties below are colored according to ODE's Recommendation for School Operating Status based on county level COVID-19 case counts, rates, and test positivity. These recommendations are different from the County Risk Levels put out by the Governor's Office. Schools are colored by their current instructional model as reported to ODE on Friday's of the previous week.

More information on these recommendations can be found at:

<https://www.oregon.gov/ode/students-and-family/healthsafety/Documents/Following%20the%20Metrics%20Visual.pdf>

School Operating Status Map



<https://public.tableau.com/profile/oregon.health.authority.covid.19#!/vizhome/OregonSchoolsReopeningStatus/SchoolReopeningMap>
Accessed 03.26.2021

School Testing strategy updates

- CDC issued new **Operational Strategy for K-12 schools**
 - Recommends that all students and staff who develop symptoms at school or experience an exposure be referred for testing
 - Screening may or may not be implemented
- **K-12 Testing in Oregon's Schools** project—**942** registered
 - Testing offered to all public and private K-12 schools
 - Testing **required** under the following circumstances
 - K-12 schools operating in-person in counties above advisory metrics
 - K-12 outdoor contact sports opening in high or extreme levels
- CDC ELC will be awarding funding to each jurisdiction to support screening in schools
 - Screening of staff should be prioritized over students
 - Awaiting notice of award

TRAINING SCHOOL STAFF ON COVID-19 IDENTIFICATION AND NOTIFICATION

Background

- **Partnership in creating tools to support school staff in responding to COVID-19**
 - Oregon Department of Education (ODE)
 - Oregon Health Authority (OHA)
 - Local public health authorities (LPHA)
 - School leaders
- **As schools reopen, level of available support varies**
- **In some schools, a need for a new role has been identified**

What will this new role do?

- Identify positive cases within school setting
- Notify families of their exposure to COVID-19
- Provide existing quarantine/isolation guidance and information to reduce risk of further exposure
- Refer families to appropriate resources and assistance when needed

Training Purpose and Objectives

- Train appropriate school staff on a new role, responsible for identifying and notifying families of COVID-19 exposure
- Engage staff in various scenarios that establish what to do and not to do when handling COVID-19 exposure
- Build staff confidence in communicating existing quarantine/isolation guidance
- Empower school staff to assess the appropriate resources and assistance for families

Who is the training for?

- Designated staff from a school that needs a school-specific system when responding to COVID-19
- Staff who receive the training may vary from school to school
 - Nurse, admin, secretary, etc.

Training Content Overview

The training is comprised of several units:

- COVID-19 Facts and Risk Management
- Trauma Informed Principles
 - Community impact and cultural responsiveness
 - Trauma-informed framework
 - Empathetic communication
- Disease Reporting
 - Understanding public health infrastructure
 - Roles in the system
 - How do staff, schools, and school districts fit in?
- Workshop: COVID-19 Scenarios and Notification
 - Notifying parents/families
 - Isolation/quarantine guidance
 - Available pandemic-related assistance and resources
- **Continued training opportunities and resources will also be available**

VACCINATIONS

Vaccines Administered by Age

(Data through 3-24-21)

Age Group	Number Vaccinated	Population Estimate	% of Population Vaccinated
20 to 29	83,500	555,278	15%
30 to 39	121,473	578,856	21%
40 to 49	125,174	543,370	23%
50 to 59	128,551	535,049	24%
60 to 64	75,865	281,592	27%
65 to 69	150,943	257,808	60%
70 to 74	140,094	206,442	69%
75 to 79	93,776	133,653	71%
80+	116,688	167,639	70%

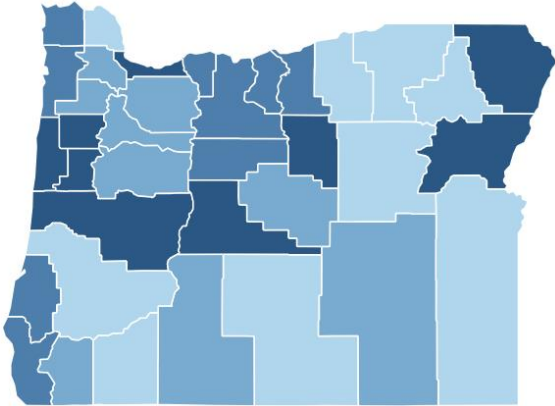
65+
vaccination
rate: 66%

Vaccination Rates By County

People Vaccinated by County*

The map shows the number of people vaccinated per 10,000 by county of residence.

Click on a county below to filter the data on the right and below. Click again to clear the filter.

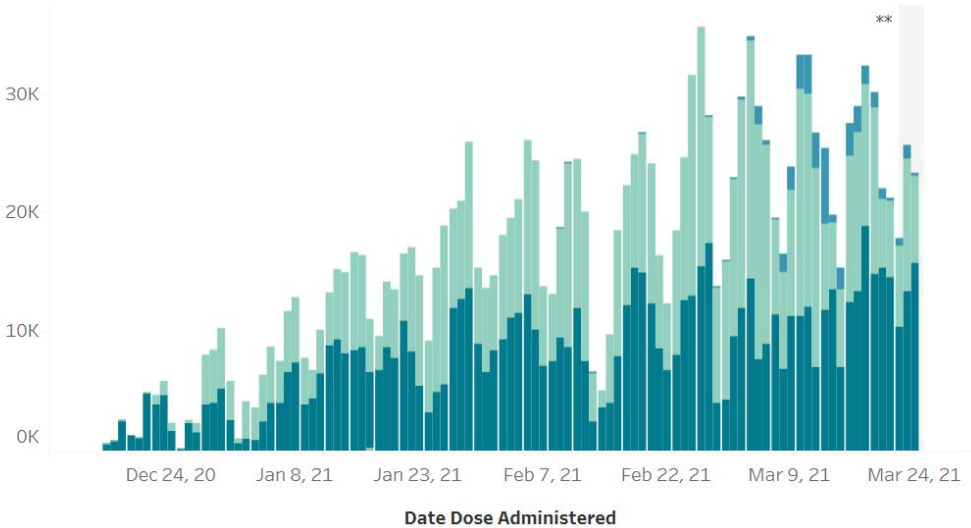


People vaccinated per 10,000: lighter colors represent counties with lower vaccination rates, while darker colors represent counties with higher vaccination rates.

Doses Administered by Day

This chart shows the total number of COVID-19 vaccine doses that have been given to residents of the selected region by day and manufacturer.

**Doses administered during this time may not yet be reported.



HOW DO WE COMPARE

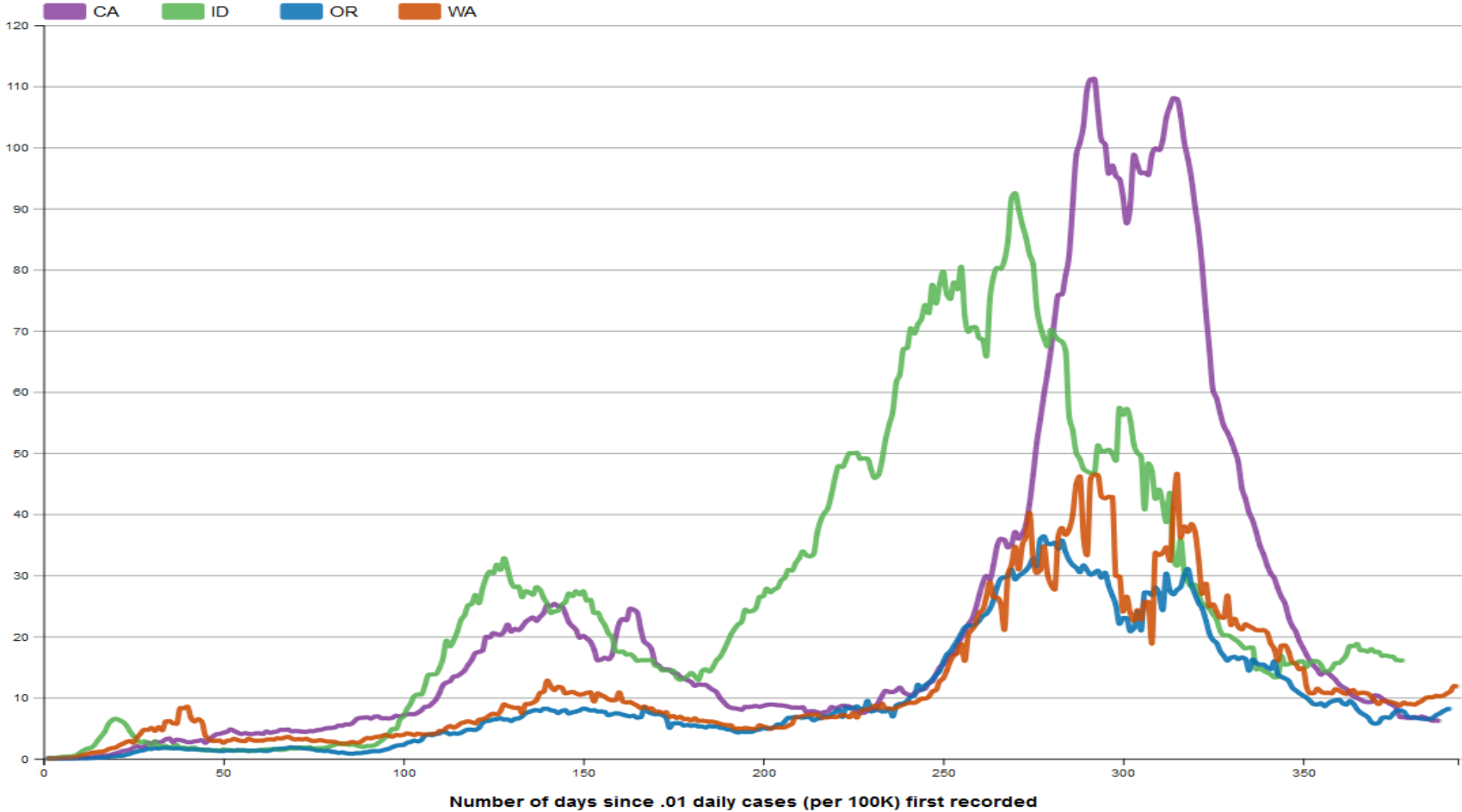
National comparisons

- Disease burden: remains exceptionally low
 - Last 7 days:
 - Daily cases/100,000 rank 5th **lowest** of 50 states
 - Daily deaths/100,000 rank 2nd **lowest** of 50 states
 - To date:
 - Cumulative cases/100,000 rank 4th **lowest** of 50 states
 - Cumulative deaths/100,000 rank 5th **lowest** of 50 states
- Testing volume: remains mid-pack
 - Last 7 days:
 - Daily PCR tests/100,000 rank 28th
 - To date:
 - Cumulative PCR tests/100,000 rank 27th

Regional Comparisons

New cases of Covid-19, reported to CDC, in CA, ID, OR, and WA

Seven-day moving average of new cases (per 100K), by number of days since .01 average daily cases (per 100K) first recorded.



<https://covid.cdc.gov/covid-data-tracker/#datatracker-home>
Accessed 03.29.2021

Questions/ Discussion