



OVERVIEW OF OREGON'S CHILD CARE ASSISTANCE PROGRAMS

PRESENTATION TO
HOUSE EARLY CHILDHOOD COMMITTEE
DAVID MANDELL, EARLY LEARNING DIVISION
FEBRUARY 3, 2021



CURRENT PUBLICLY FUNDED EARLY CARE AND EDUCATION PROGRAMS

Employment Related Day Care (ERDC)

Preschool Promise

Head Start / Oregon Pre-Kindergarten (OPK)

Early Head Start (EHS)

Baby Promise





COST OF CARE TO FAMILIES

Monthly Median Income – Two-Parent Household	\$4,512
Child Care (average cost per infant – center per month)	\$1,211
Housing (Fair market 2-bedroom apartment per month)	\$1,028
Food (USDA “low-cost” food plan per month)	\$700
Remaining available	\$1,573

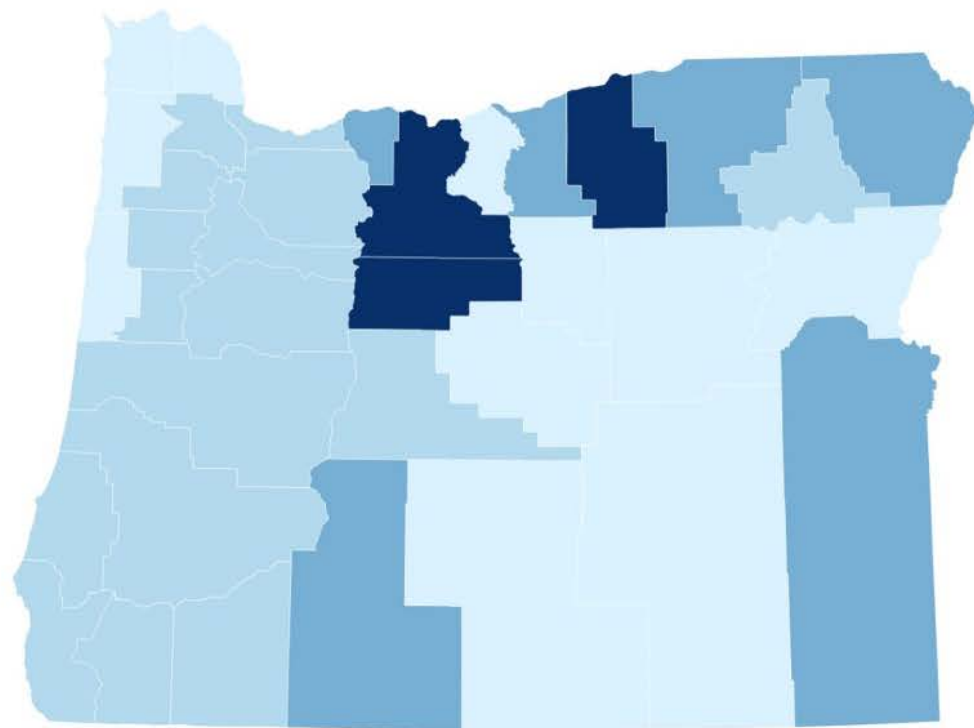


For a family making median income with just one infant in care: child care, housing, and food costs are nearly **70% of the monthly household budget.**

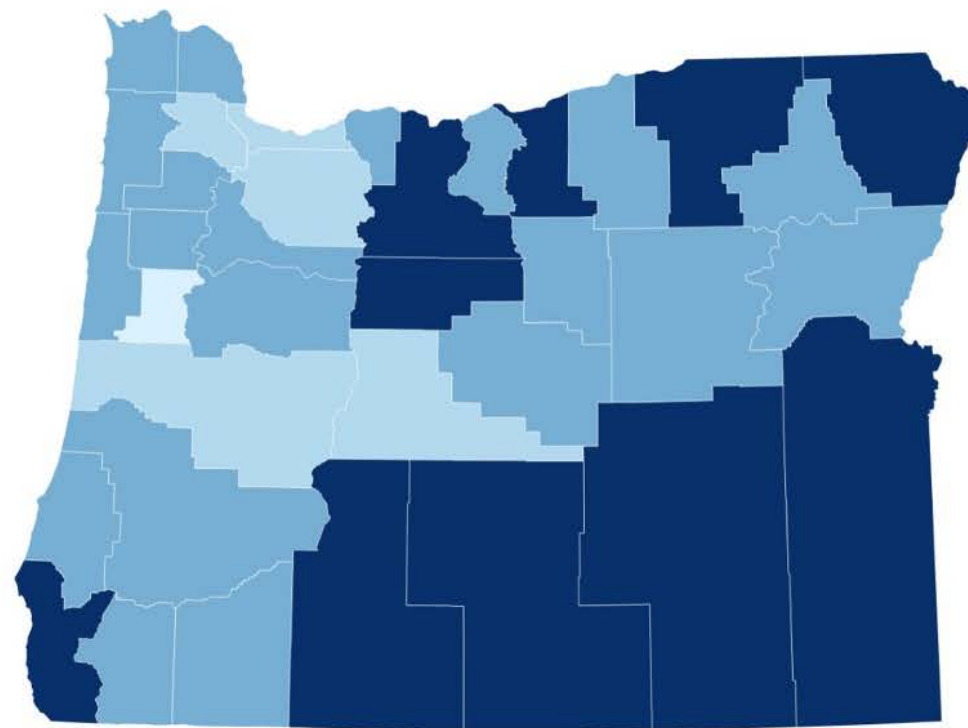




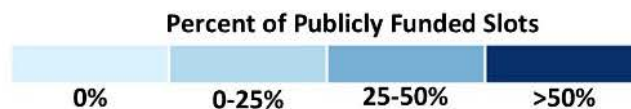
MAP: Percent of Regulated Child Care Slots that are Publicly Funded by Age Group



0-2 years old

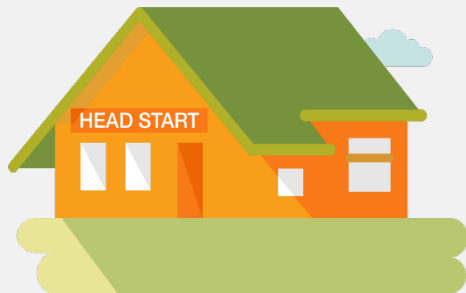
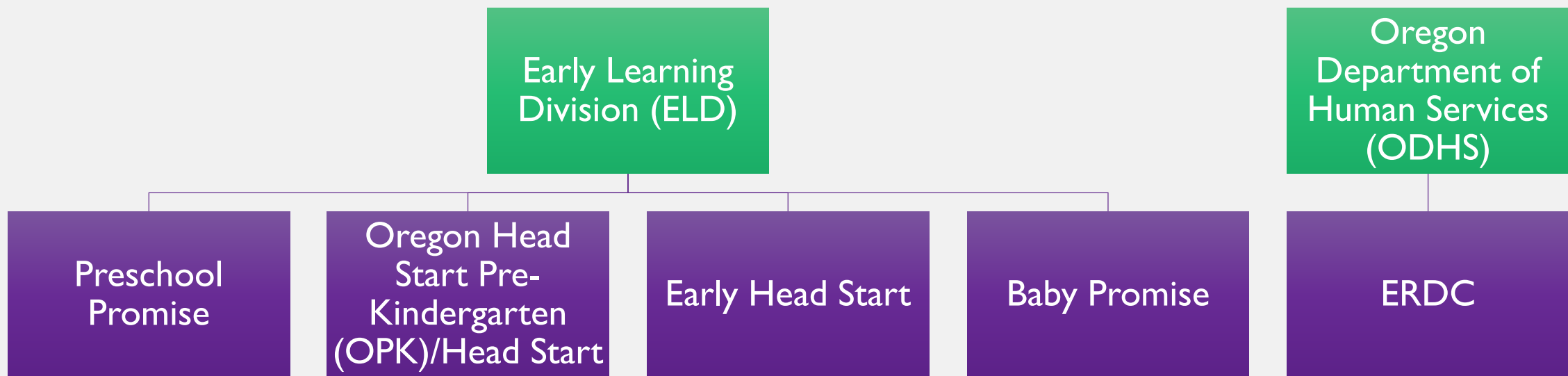


3-5 years old





ECE PROGRAM ADMINISTRATION





PUBLICLY FUNDED ECE IN OREGON

	Employment Related Day Care (ERDC)	Preschool Promise	Oregon Pre- Kindergarten (OPK) / Head Start	Early Head Start	Baby Promise
Funding Type	State & Federal	State	State & Federal	State & Federal	Currently Federal
Program Standards	State & Federal	State	Federal	Federal	State



ELIGIBILITY & COPAYMENTS



Eligibility Provisions	ERDC	Preschool Promise	Head Start / Oregon Pre-Kindergarten	Early Head Start	Baby Promise
Child Age of Eligibility	Under 12 years old <i>(or through age 17 if child has special need)</i>	3- and 4-year-olds	3- and 4-year-olds	Infants and 2-year-olds; expectant mothers	Infants and 2-year-olds
Parental work/training requirement	Caretakers/parents must be employed*	none	none	none	Same as ERDC
Family Income	Up to 185% FPL	Up to 200% FPL	Up to 100% FPL	Up to 100% FPL	Up to 200% FPL
Parent copayment?	Yes	No	No	No	No



QUALITY STANDARDS



Quality Expectations Vary	Licensed Child Care (bulk of ERDC)	Preschool Promise	Head Start / Oregon Pre-Kindergarten	Early Head Start	Baby Promise
Daily Routine	✓	✓	✓	✓	✓
Curriculum		✓	✓	✓	✓
Quality improvement supports provided		✓	✓	✓	✓
Staff qualifications	Degree not required	B.A. with ECE coursework	B.A. with ECE coursework	CDA	CDA, OR Infant Toddler Credential
Staff continuing education	15 hours over annually for Certified Family & Center	20 hours annually	20 hours annually	20 hours annually	20 hours annually
Required Family Engagement		✓	✓	✓	✓