

Department of Geology and Mineral Industries

*Providing earth science information
and regulation to make Oregon safe
and prosperous*



DOGAMI leading an Oregon Society of Soil Scientists field trip at Smith Rock State Park

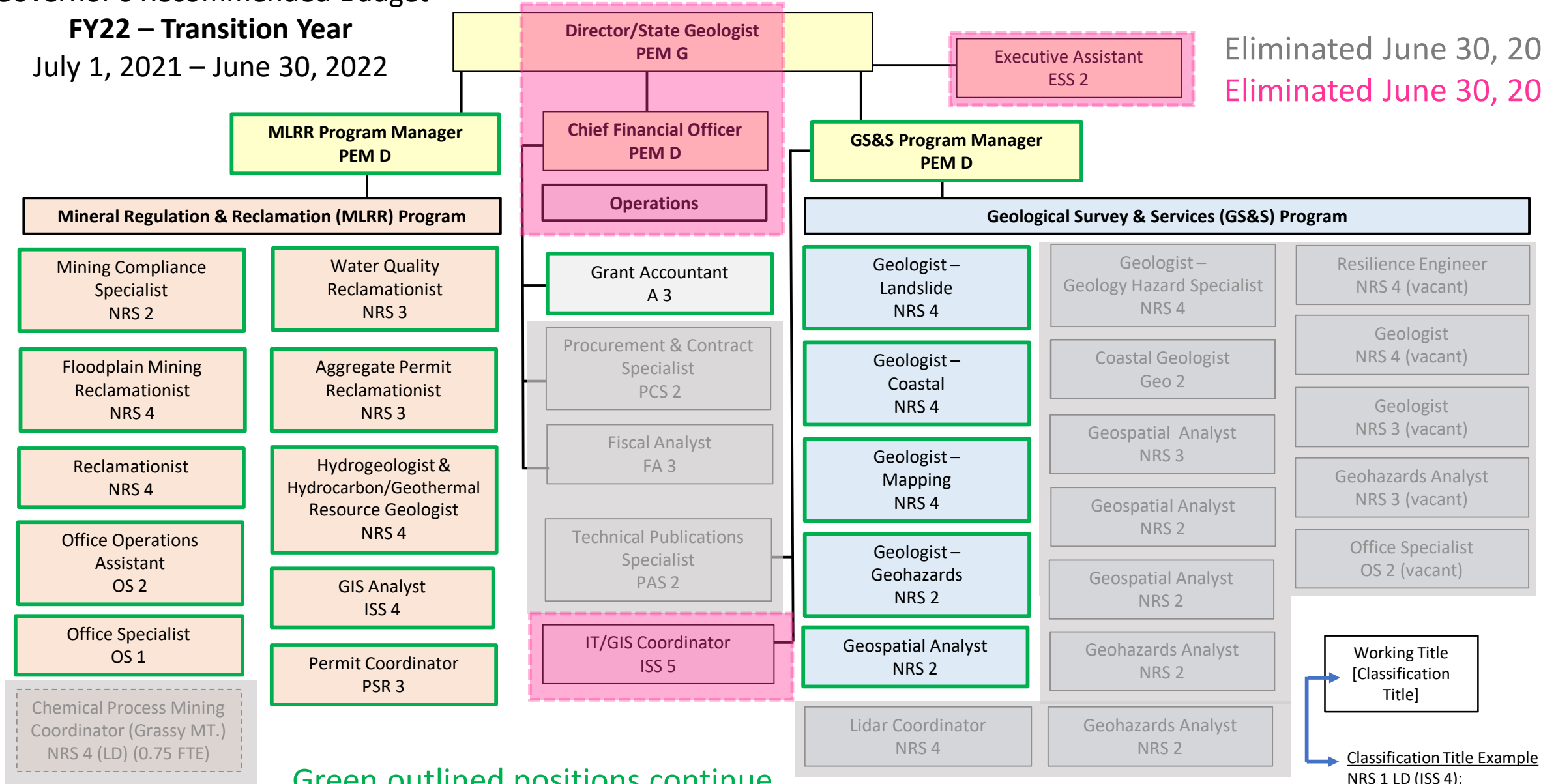


Governor's Recommended Budget

FY22 – Transition Year

July 1, 2021 – June 30, 2022

Eliminated June 30, 2021
 Eliminated June 30, 2022



Green outlined positions continue for 2nd year under receiving agencies

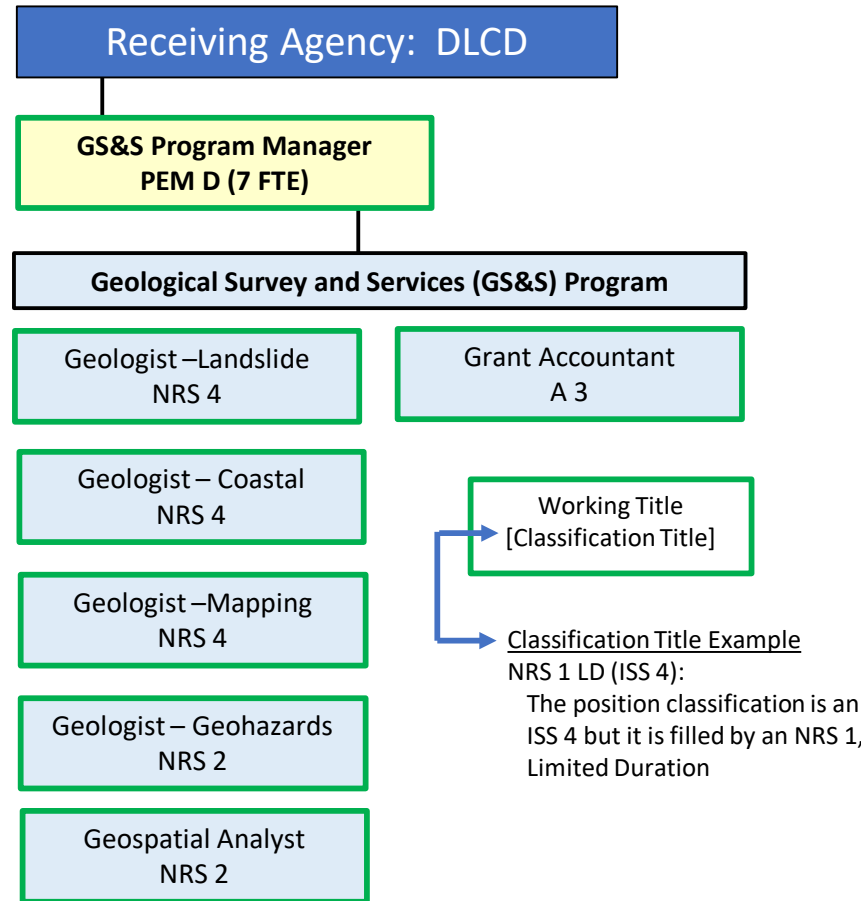
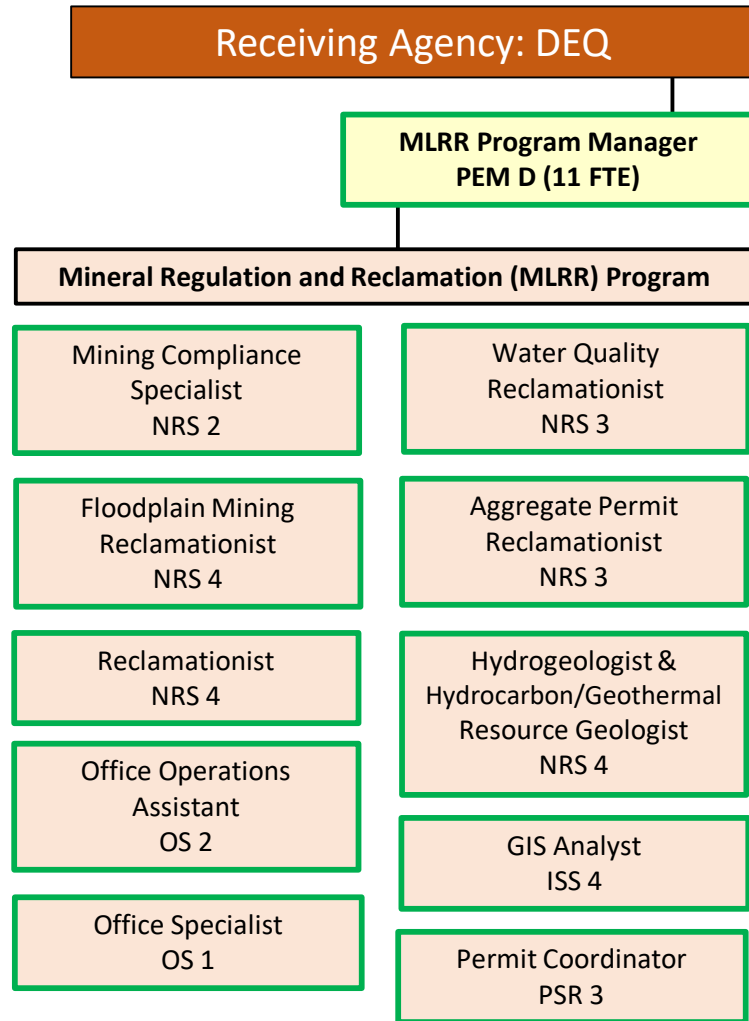
Working Title
 [Classification Title]

Classification Title Example
 NRS 1 LD (ISS 4):
 The position classification is an ISS 4 but it is filled by an NRS 1, Limited Duration

Governor's Recommended Budget FY23 – Realignment

July 1, 2022 – June 30, 2023

21 Positions Eliminated



- Eliminate Director PEM G
- Eliminate Executive Assistant ESS 2
- Eliminate 3 Business Office Positions
1 – PEM D
1 – FA 3
1 – PCS 2
- Eliminate 11 Technical Positions
2 – ISS 5
2 – NRS 4*
4 – NRS 3*
1 – NRS 2
1 – GEO 2
1 – PAS 2
* Lidar (1.5 FTE)
- Eliminate 4 Vacant Technical Positions
2 – NRS 4
2 – NRS 3
- Eliminate 1 Vacant Administrative Position OS 2

Year 2 Transitioned Programs and Staffing

July 1, 2022 – June 30, 2023

To DEQ


To DLCD

Mineral Lands • 11 FTE




**Regulation & Reclamation
of Surface Mining,
Exploration, Oil & Gas,
Geothermal, Chemical
Process Mining**


Geological Survey & Services • 7 FTE




**Landslide
Inventory &
Susceptibility
Mapping**



**Flood &
Channel
Migration
Mapping**



**Tsunami &
Coastal
Erosion
Mapping**



**Geological
Mapping**

Risk Assessment

Changes from 19-21:

- Positions Reduced: 7 Administrative and 14 Technical
- Subject Matter Expertise Reduced: Resilience Engineering, Lidar, Earthquake and Seismic Hazards, Mineral Resource Mapping



Key Performance Measures (percentages for FY 20)

Key Performance Measure (KPMs)		GS&S	MLRR	Agency
1	Hazard Assessment	56%		
2	Geologic Mapping	63%		
3	Lidar Coverage	53% (concludes in 2021)		
4	Mine Sites Inspected		11%	
5	Customer Service	90%		
6	Governance			100%





Geologic Survey & Services Program

The GRB envisions:

- Realignment with DLCD, leveraging complementary organizational infrastructure
- Reprioritization of program funding
- Retainment of five technical science positions and subject matter expertise
- Pursuit of select competitive Federal grants and statutorily required interagency agreements
- Concludes Lidar Program



Continuing geologic expertise (7.0 FTE):

GS&S Program Manager (0.75 FTE) & Grant Accountant (1.0 FTE)



**Landslide
Inventory &
Susceptibility
Mapping
(1.0 FTE)**



**Flood &
Channel
Migration
Mapping
(1.0 FTE)**



**Tsunami &
Coastal
Erosion
Mapping
(1.0 FTE)**



**Geological
Mapping
(1.25 FTE)**

Risk Assessment and GIS Support (1.0 FTE)



Continuing geologic work:

Federal Funds (competitive Federal grant proposals)

- Geohazards inventory and risk assessment (FEMA)
- Tsunami inundation and evacuation modeling; coastal erosion; public outreach (NOAA)
- Geologic, hazards, and resource mapping (USGS)

Other Funds (statutorily required Interagency Agreements)

- Energy proposal reviews (ODOE)
- State owned property mineral assessments (DSL)



Mineral Land Regulation and Reclamation

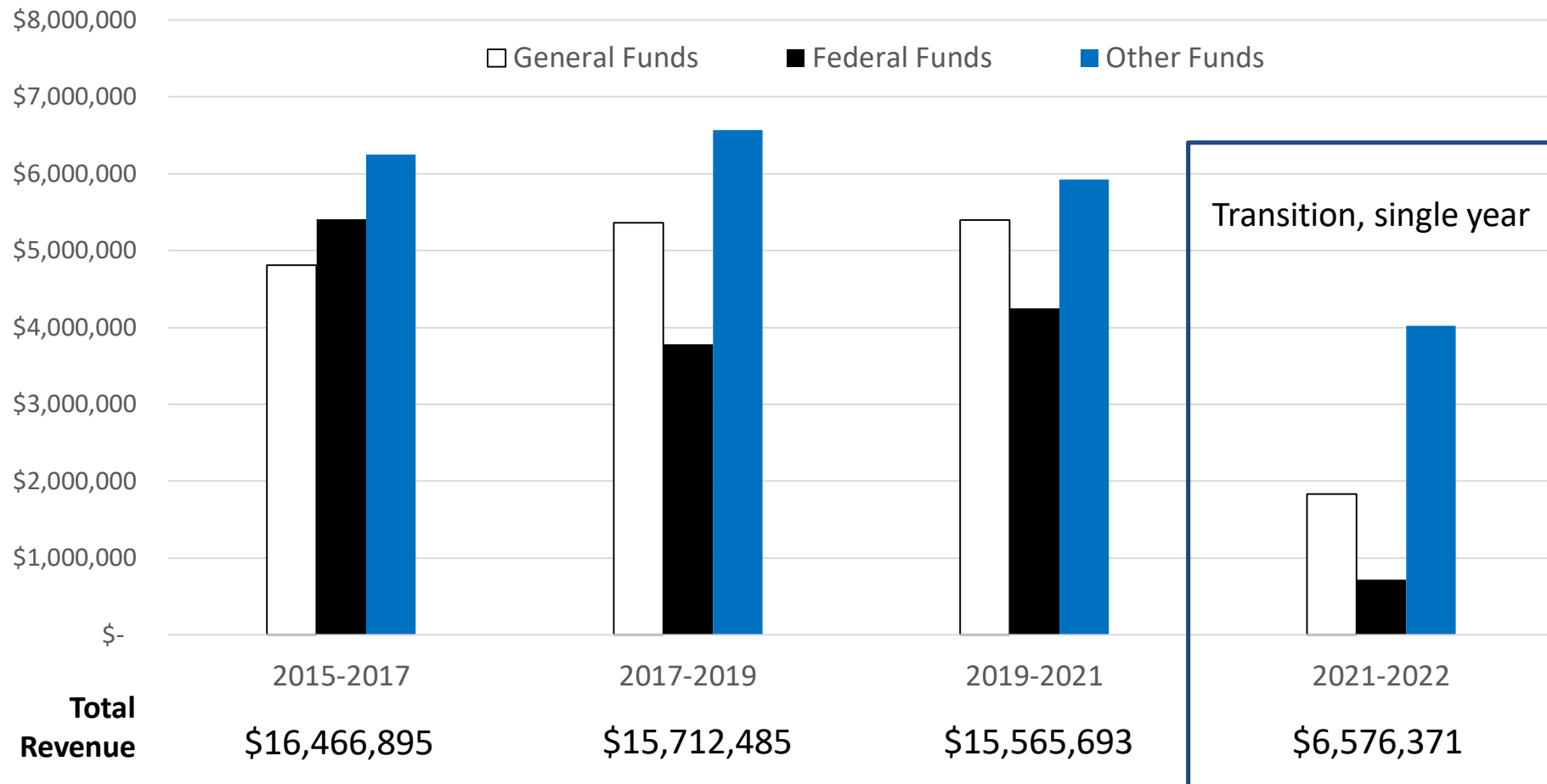


The GRB envisions:

- Transfer of MLRR program to DEQ, with parallel regulatory services in a larger agency and associated infrastructure
- Improved integration for DOGAMI/DEQ stormwater permitting on mine sites
- MLRR able to more efficiently tap DEQ e-permitting platform

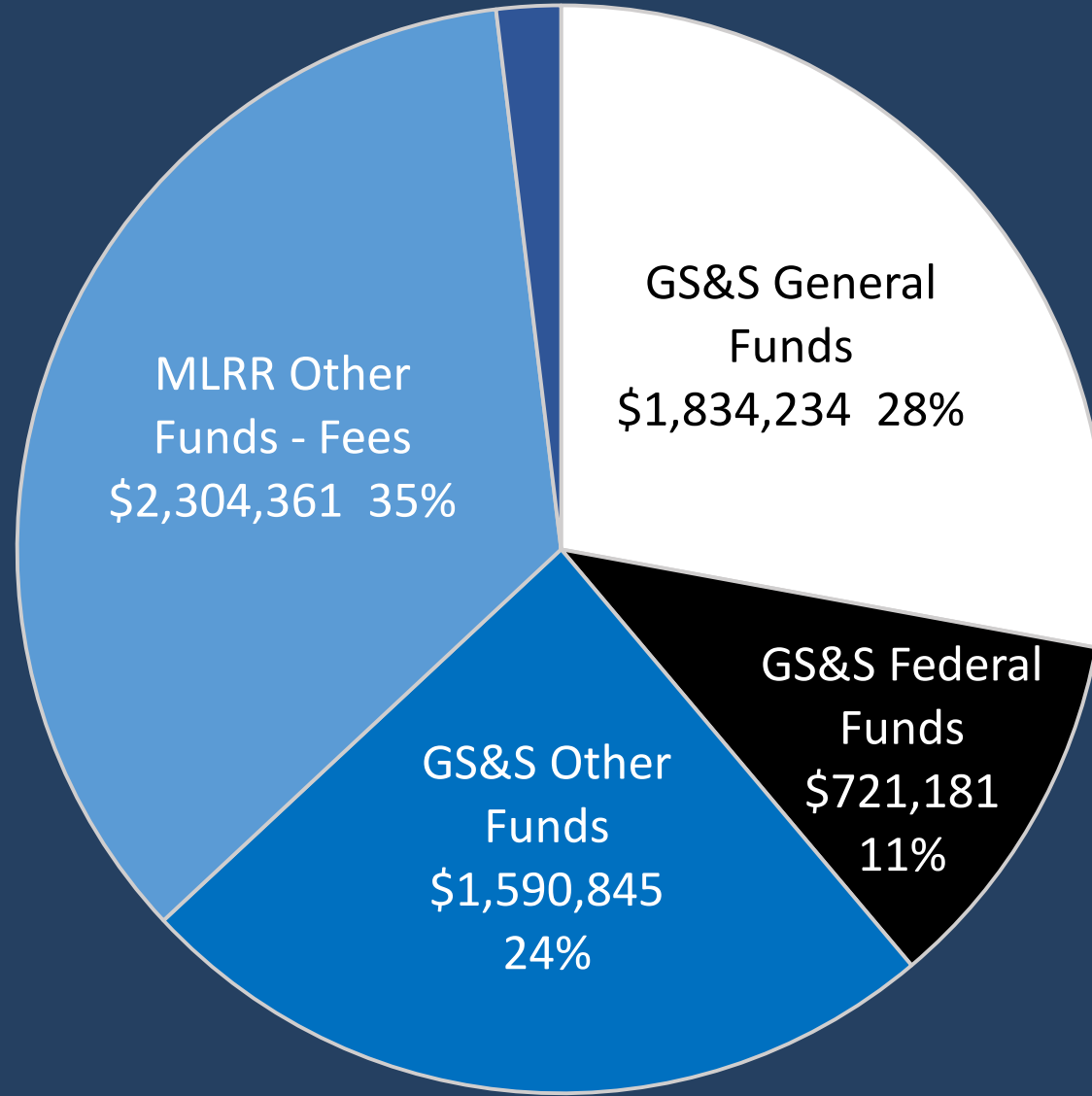


DOGAMI Revenue per Biennium

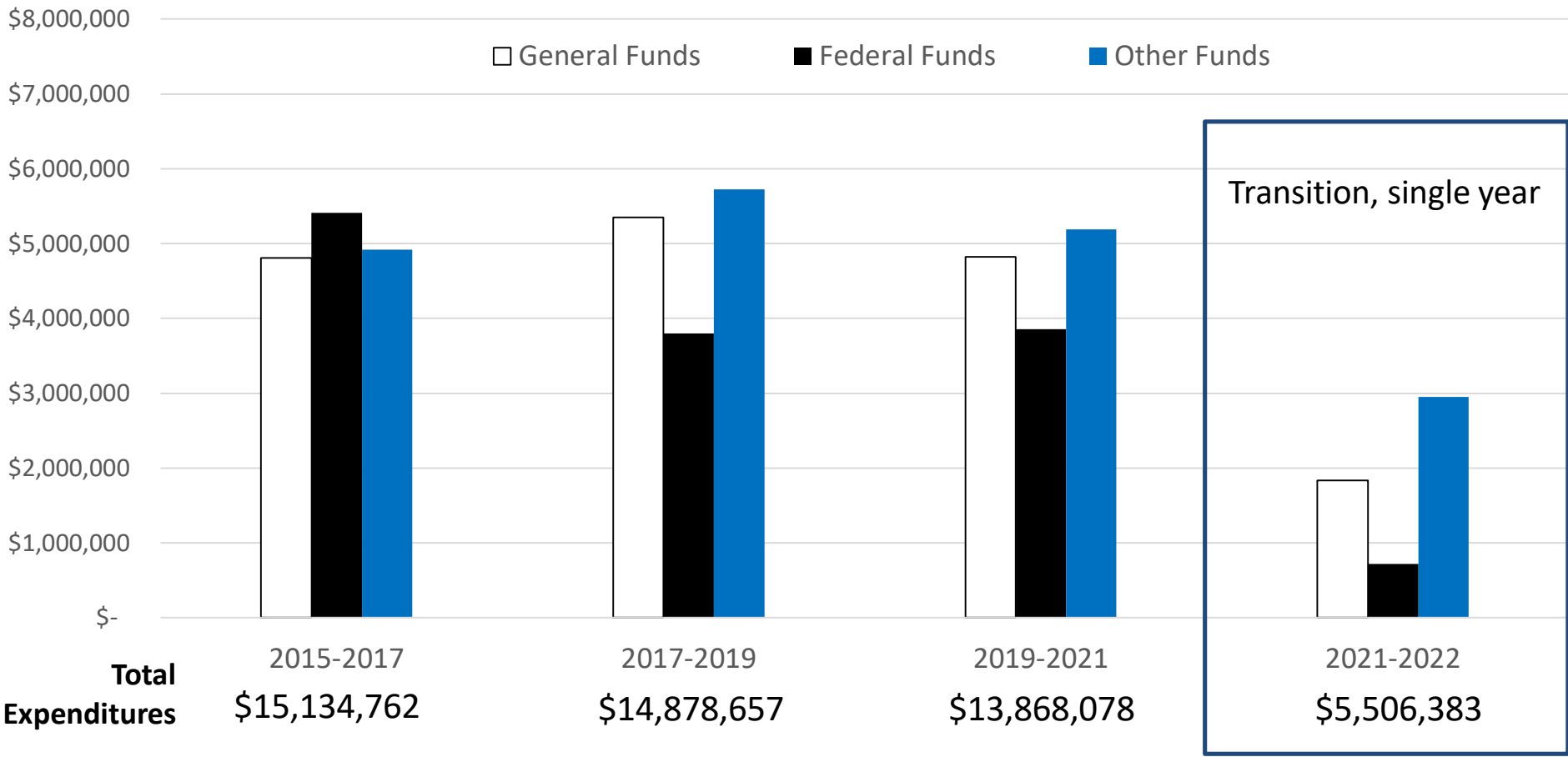


DOGAMI Revenue for 2021-2022

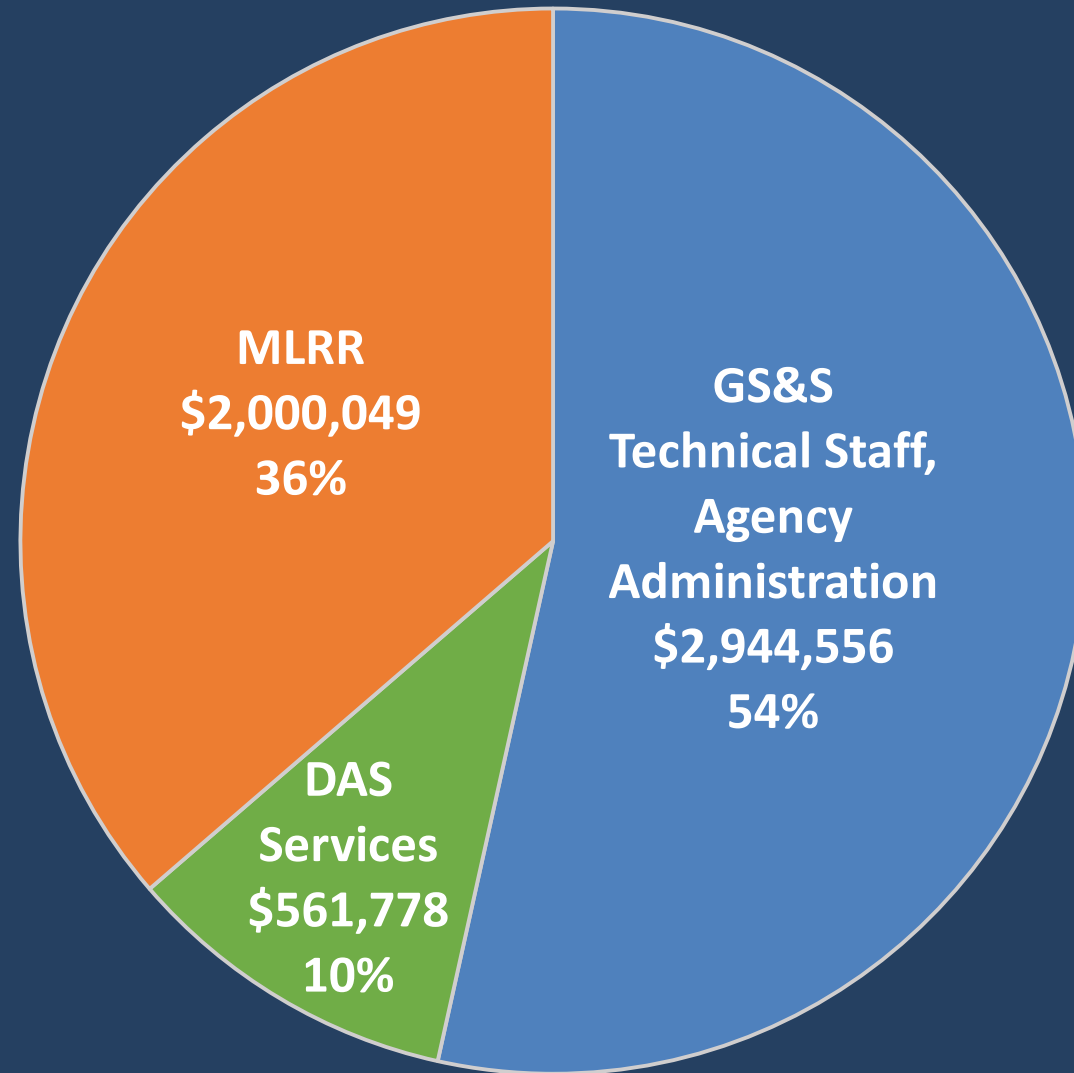
MLRR Transfers \$125,750 2%



DOGAMI Expenditures per Biennium



DOGAMI Expenditure for 2021-22





DOGAMI leading an Oregon Society of Soil Scientists field trip at Smith Rock State Park

GS&S and MLRR are committed to continue to provide the science and regulatory framework that helps the state enterprise

