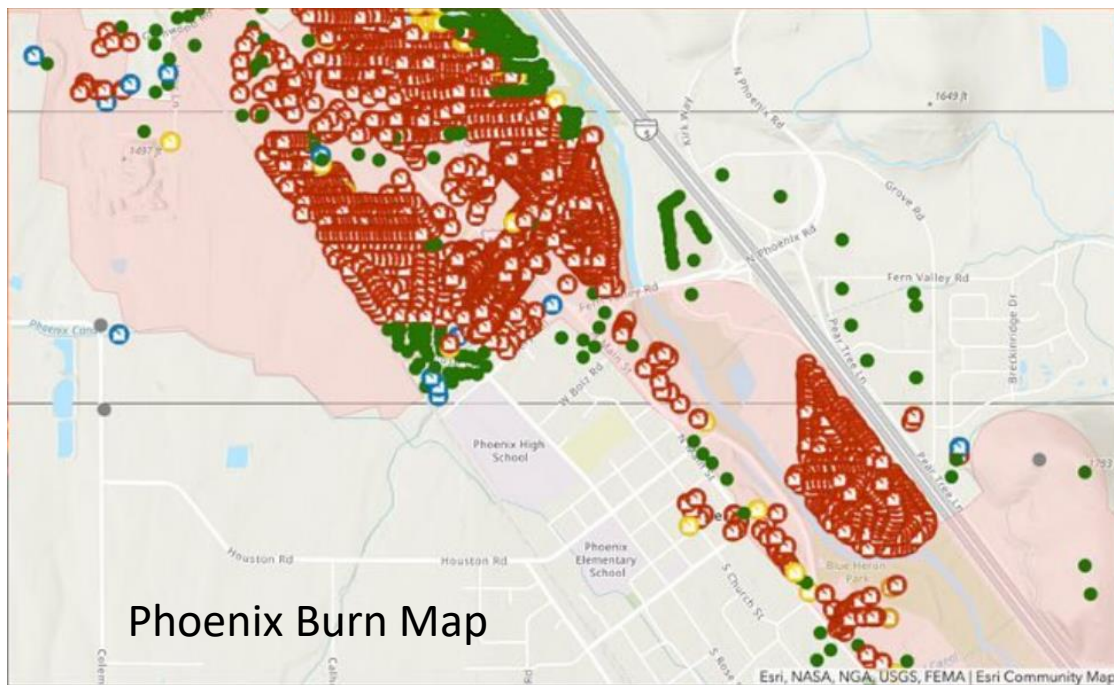
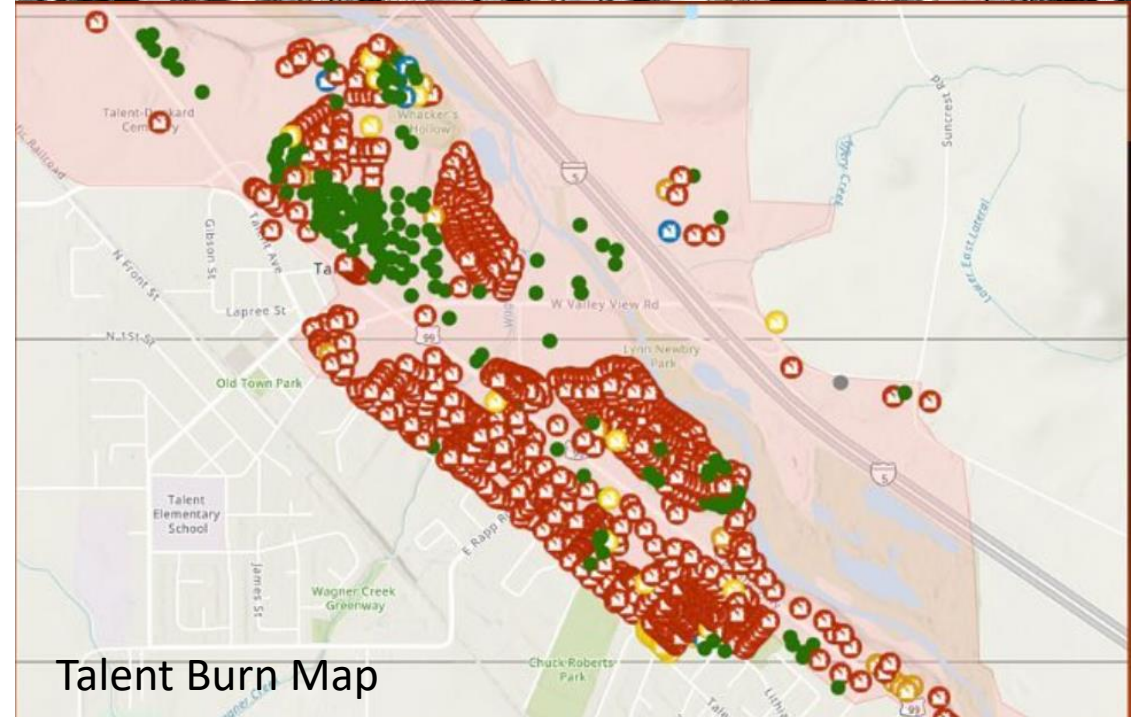


ROGUE ACTION CENTER



Almeda Fire Impacts

- 17 Manufactured Home Parks impacted
- 2,357 structures, 1,748 mobile homes or apartments
- 3,000 Families displaced
- Disproportionately impacted Rogue Valley Latino/a/x community
- 25% were over age 65 and 1 in 5 displaced live with a disability
- 40% of Phoenix-Talent School District families were displaced by the fires.



The Market Won't Solve the Housing Crisis, We Will. Here's How:

There are many aspects to this crisis, and many steps we need to take to address it. Community voices need to be leading to ensure solutions meet the real needs of those living in our community.

Shelter + Services

Houselessness is on the rise in Southern Oregon among families, people working in our local economy, and seniors on fixed incomes who can't keep up with rising rents.

Tools Include:

Right to Rest Policies
Increasing low barrier shelter options
Strategies to increase supply of affordable, accessible housing near transit and services and policies to keep rents reasonable

Transitional

Many people in our community are trying to put their lives back on track after addiction, domestic violence, or jail. Many of the people who want to succeed and return to productive roles in our community are not able to because they don't have access to the transitional housing that would provide the needed stability and supports to get back on their feet and find jobs and other housing options.

Tools Include:

Transitional housing options

Supportive

Being able to live on your own with a little bit of support when you need it is an important way to ensure that people living with an illness, a disability, or who want to age in their own community have the dignity and quality of life we all deserve.

Tools Include:

Funding, support staff, and housing units to provide supportive housing options

Renter Protections

1 in 2 households in Jackson and Josephine County rent their homes, so it's clear why renter protections are important for creating the stability our community needs to thrive.

Tools Include:

Ensuring that renting people aren't at risk of losing housing for little or no reason, or with short notice, when they have done nothing wrong. This also means the ability to ask for the basic repairs and maintenance necessary for safe, healthy rental housing environments without fear of retaliation.

Affordability

We have made a decision as a society that some things are too important to be left up to "the market." In Oregon these include whether someone has access to food and health insurance. Housing is another basic human need, but so far we haven't taken the steps to ensure that children, seniors, and working families have access to housing.

Tools Include:

Inclusionary zoning
Building subsidized affordable units
Development without displacement
Community land trusts

The Right Supply

To meet our housing needs we need more of the right kinds of housing units including smaller units, accessible units, rental housing, and homes affordable to the people who work here, retirees, and people living with disabilities, so that our communities have a healthy mix of options to meet different needs. And we need that housing to be built in the right places, near schools, transit lines, and services.

Tools Include

Missing middle housing
Using land efficiently

Connect with Us

Teresa Cisneros | Housing Justice Organizer

- Teresac@RogueActionCenter.org
- RogueActionCenter.org
- Facebook.com/RogueActionCenter
- @RogueActionCenter on Instagram