



---

# Oregon's Early Care and Education System in COVID-19

Miriam Calderon, Early Learning System Director

House Early Childhood Committee

January 25, 2021



# Timeline of Emergency Child Care (ECC)

- **March 8, 2020:** Governor Brown declares State of Emergency
- **March 23:** Executive Order 20-12 closed child care March 25 – April 28 and established Emergency Child Care (ECC)
- **April 30:** Phase 1 of ECC Grants
- **August 14:** First release of revised ECC Guidelines
- **September 3:** Supplemental and Opportunity Grants
- **September 14:** Supplies Disbursement
- **December 24:** Latest phase of ECC grants distributed
- **January 12, 2021:** Latest release of revised ECC Guidelines
- **January 25:** Tier 1B includes early learning workforce for vaccinations



# Vaccinations for Early Learning Workforce

---



- Early learning workforce included in Tier 1B
- Tier 1B vaccine distribution begins on January 25, 2021
- ELD is working with OHA to ensure communications with early learning workforce on eligibility and distribution

# Vaccinations for Early Learning Workforce

---

1B Early Learning workforce includes:

- All individuals in Emergency Child Care (ECC) facilities, including young adults (ages 16 to 18 years old)
- License-exempt caregivers providing Department of Human Services subsidized child care in their own home or in the child's home
- Licensed and recorded non-ECC facilities (home-based or center-based)
- Office of Child Care (OCC) investigators
- Individuals in the substitute provider pool



# Vaccinations for Early Learning Workforce

---

1B Early Learning workforce ***does not*** include:

- Staff of Healthy Families Oregon
- Staff at facilities receiving support via the Equity Fund
- Office of Child Care (OCC) licensors\*
- Parenting Educators
- Staff in the Child Care Resource & Referral network
- Staff at Inclusive Partners
- Staff at Early Learning Hubs





# COVID-19 Cases in ECE Settings

- ELD and Oregon Health Authority (OHA) have been working together to include outbreaks in child care in their weekly reports.
- The Office of Child Care (OCC) has been tracking the number of facilities with COVID-19 cases.
  - 431 facilities with one or more cases of COVID-19 (total as of January 21)
- OHA is reporting active COVID-19 outbreaks linked to ECE settings in its weekly report.



# Most Licensed Facilities have Reopened

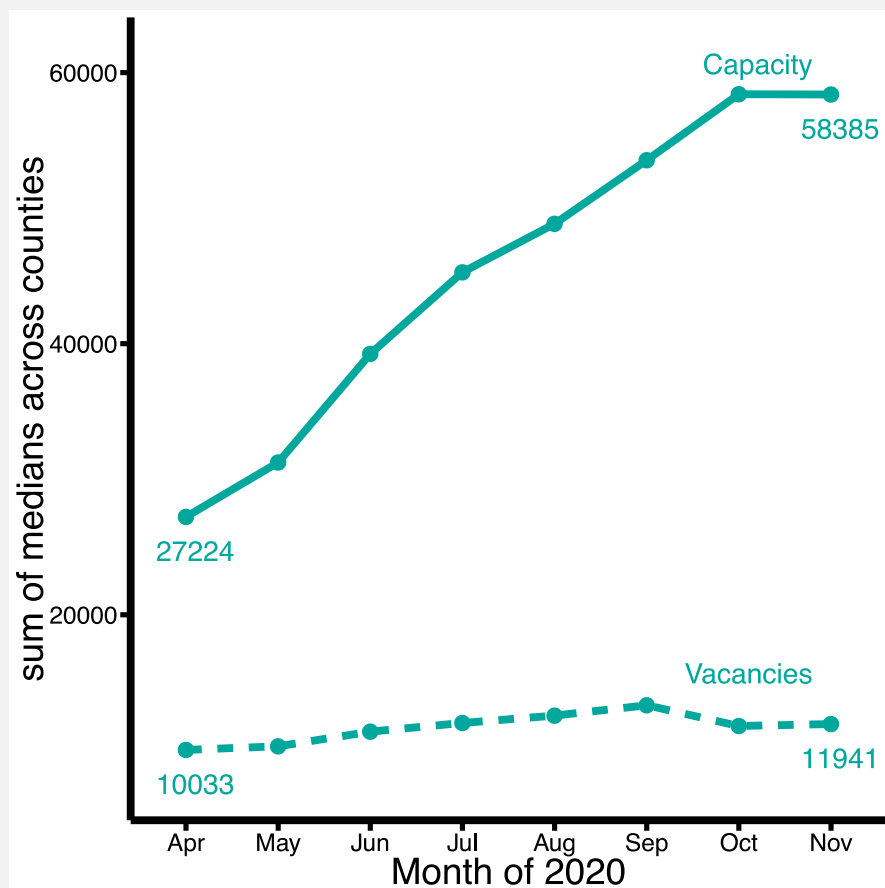
- The vast majority (over 80%) of approximately 4200 licensed child care facilities are currently open and providing Emergency Child Care
- ELD is working with PSU to learn more about the facilities that haven't reopened
  - Have they permanently closed?
  - What resources do they need to re-open?



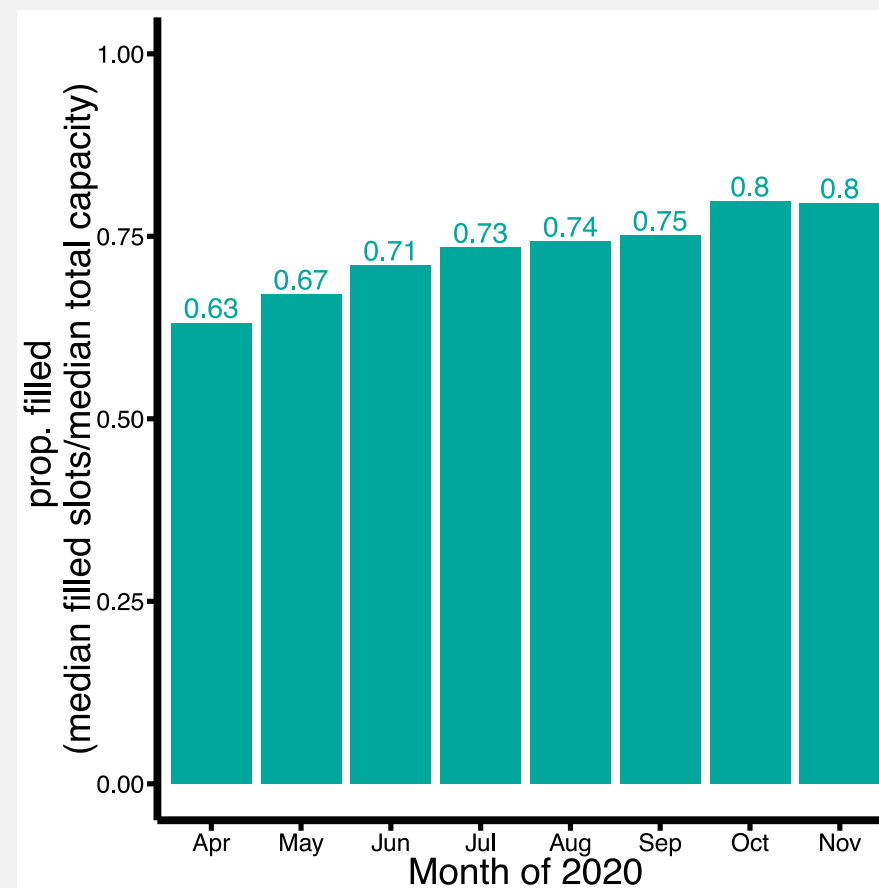


# Capacity and Vacancies during COVID-19

Both capacity and vacancies have generally increased during the pandemic.



Because vacancies and capacity have mostly tracked together, the proportion filled has been mostly the same over time, with a slight increase.



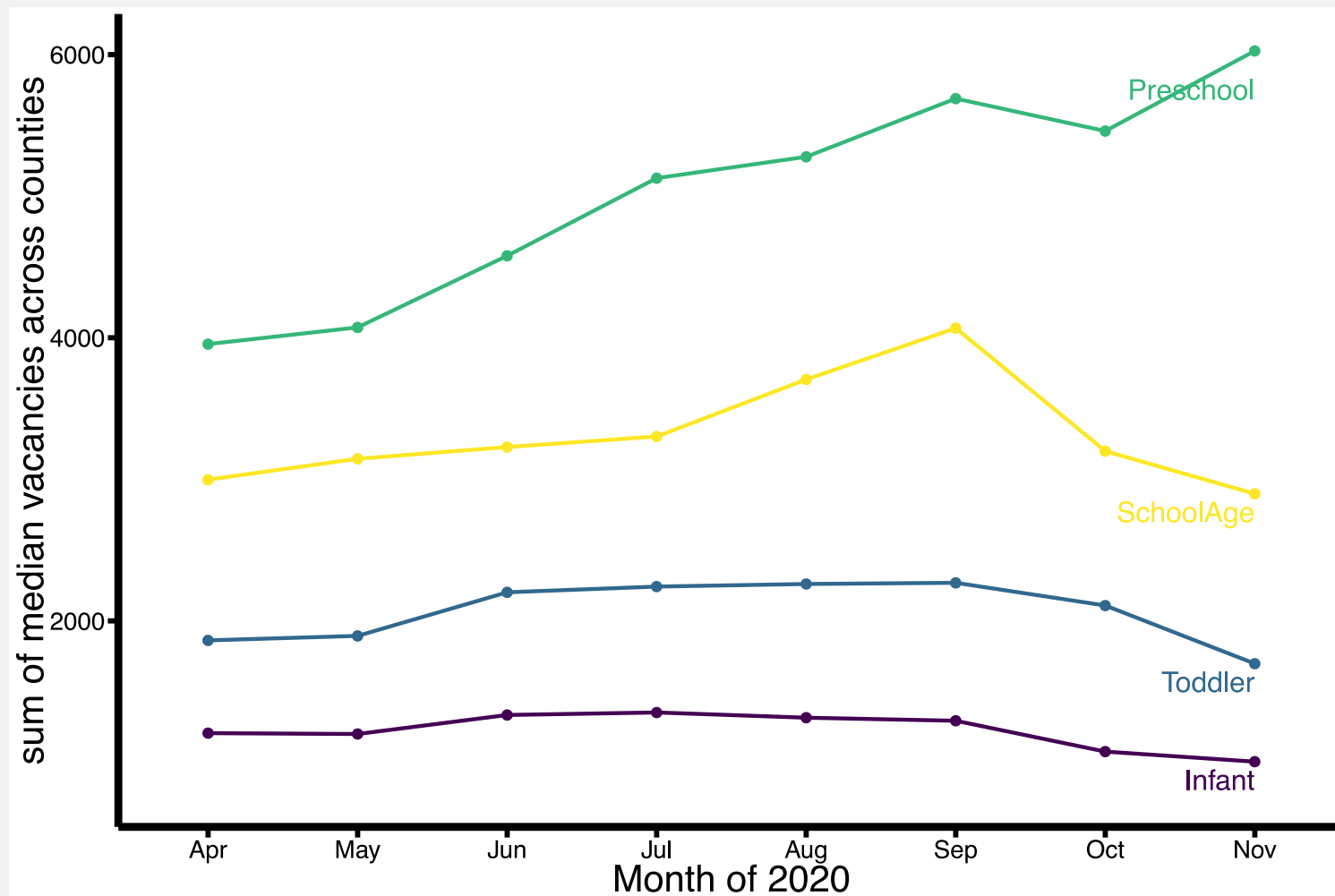




# Vacancies by Age Group

Infant & toddler care was difficult to find before COVID-19 and has remained so during the pandemic (low vacancies).

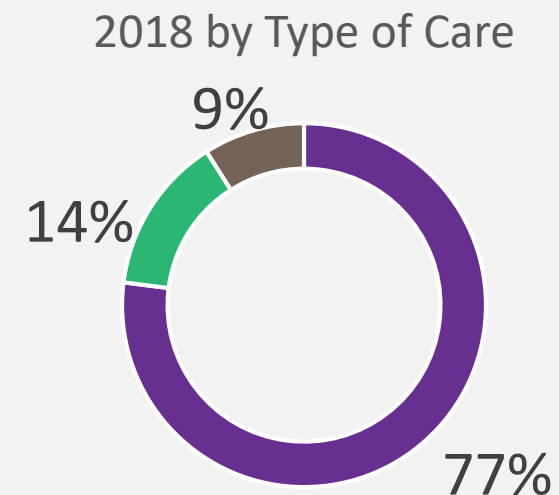
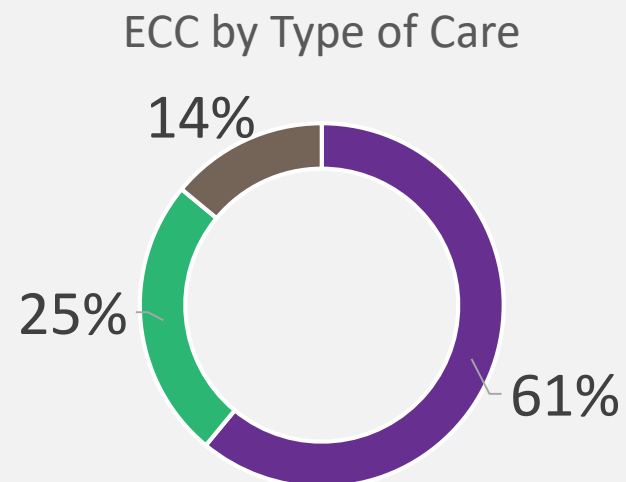
High vacancy rates during COVID-19 are recently starting to decline.





# ECC Workforce

Workforce by Race/Ethnicity	ECC Workforce N = 6,050		2018 Workforce N = 17,604	
Overall				
White	4,193	69%	12,253	70%
Person of Color	1,857	31%	5,351	30%
Race/Ethnicity by Category				
American Indian	90	1%	259	1%
Asian	216	4%	774	4%
Black	246	4%	615	3%
Hispanic/Latino/Spanish	1,168	19%	3,346	19%
Native Hawaiian	48	1%	144	1%
White	4,193	69%	12,253	70%
Multiracial	69	1%	137	1%
Other	20	0%	76	0%



- Center-Based (CC/PS/RA)
- Large Home-Based (CF)
- Small Home-Based (RF)

The EEC workforce analysis consists of 7,625 individuals who work directly with children were included in the analysis: directors, site directors, head teachers, teachers, aides, assistants, and large and small home-based providers.



# COVID-19 Response from Publicly Funded ECE Programs

- Providers are able to request waivers for virtual and hybrid options
- More than half of providers are delivering in-person in Preschool Promise; less for Oregon Prekindergarten and Equity Fund
- Decisions made in concert with needs and requests of families

# ERDC Response to COVID-19

---



## Employment Related Day Care (ERDC) Policy Changes

- \$14.1M in federal CARES Act allocated for these COVID responses:
  - Eliminated copays for all families (*through March 2021*)
  - Increase income eligibility to 85% SMI/250% FPL
  - Expanded absence & closure payment policy
  - New guidance on use of ERDC during distance learning

# Federal Relief for Child Care

---

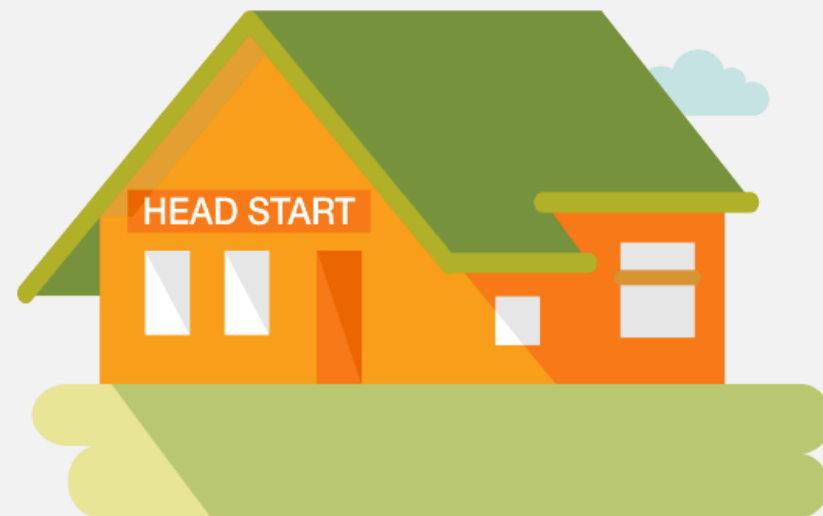
COVID Relief Funds (CRF)	CARES Act	Consolidated Appropriations Act 2021*
<p>\$73.8M total CRF allocation</p> <ul style="list-style-type: none"><li>• \$30M in June 2020</li><li>• \$43.8M in November 2020</li></ul>	<p>\$38,595,401; distributed through CCDF</p>	<p>Still awaiting allocations tables; estimated that Oregon will receive approximately \$100M distributed through CCDF</p>
<p>Liquidated by December 30, 2020</p>	<p>Obligated by September 30, 2022 and liquidated by September 30, 2023</p>	<p>Obligated by September 30, 2022 and liquidated by September 30, 2023</p>

\*ELD will see a slight increase in CCDF allocation from CAA in 2021; final amount pending



## ELD Grants and Federal Relief Funding

- Total Amount of Grant Disbursement for ECC Grants: \$79.5 million (includes CRF and CARES Act funding)
- Total Number of Providers that received a grant: 3,000 providers
  - Additionally, ODHS disbursed Employment Related Day Care subsidy payments to roughly an additional 1500 providers

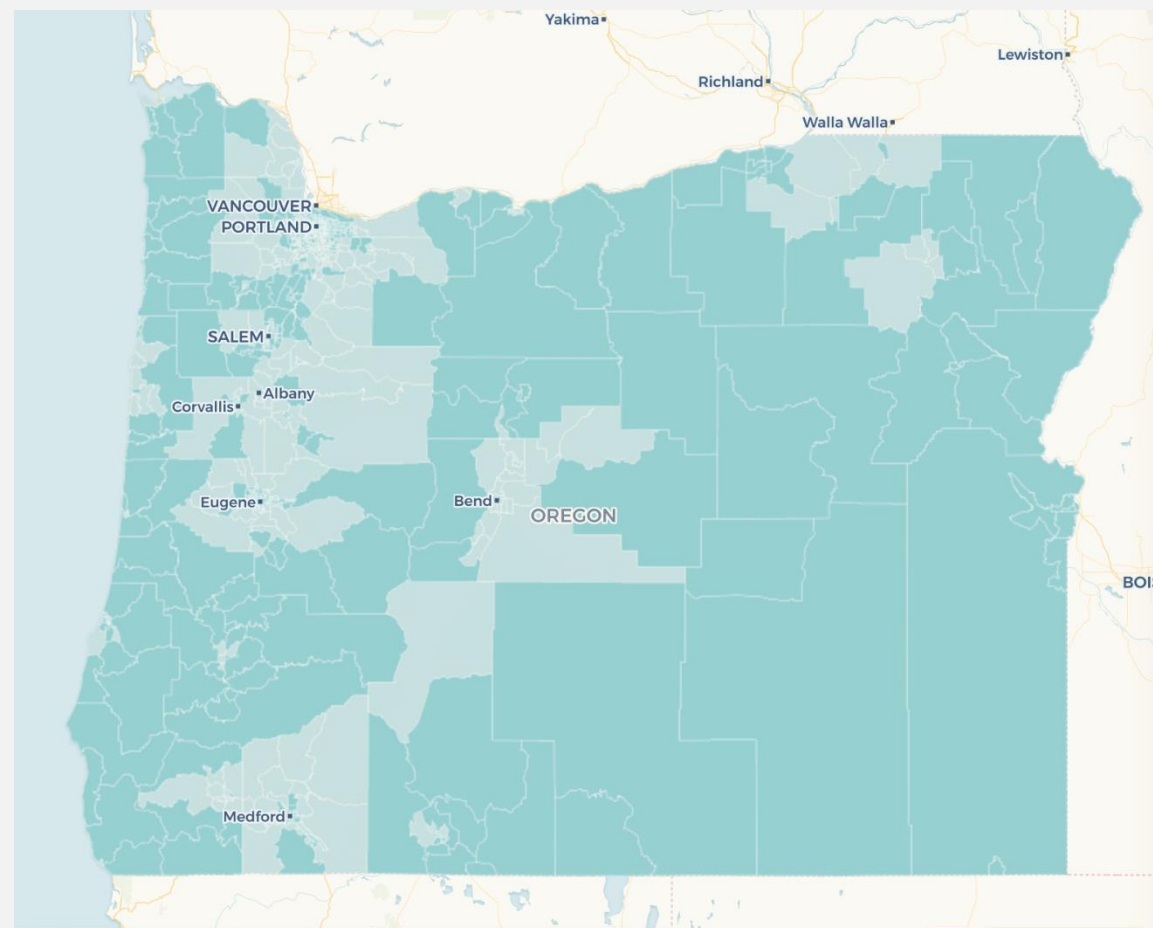




# Opportunity Grants: Focusing Resources to Maintain Supply in Hardest Hit Communities

53% of Oregon's census tracts were Opportunity Zones  
*(in dark teal)*

- Child Care Deserts
- High and Concentrated Poverty
- Residential Racial Isolation and Children of Color
- Rurality



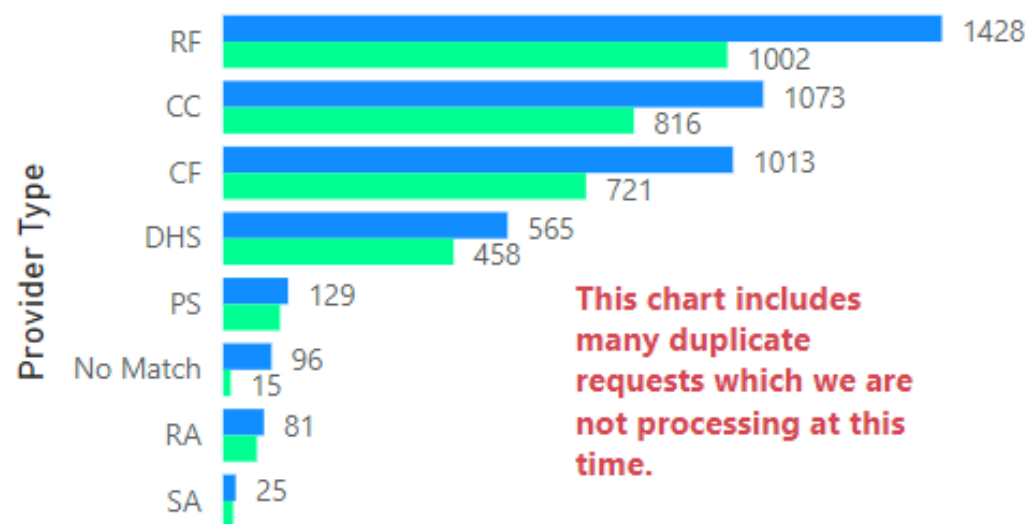
Map available here: <https://oregonearlylearning.com/opportunity-zones-in-oregon/>



# ECC Supplies

Requests and Processed Orders by Provider Type

● Requests ● Processed



To ensure that child care providers had access to personal protective equipment (PPE) and cleaning supplies for safe operations, ELD provided free supplies. Care Packages contained masks, gloves, disinfectant wipes, baby wipes, and a thermometer. (Total Cost of Supplies: \$3.09 Million)



# Telehealth

---

- ELD has contracted with OHSU to provide nurse consultation to early care and education providers during COVID-19
- Consultation online will help providers with daily health checks and determining whether a child needs to be sent home or excluded
- Telehealth line will be available to all early care and education providers, including license-exempt providers serving subsidy
- Telehealth line goes live in two weeks



# Child Care Supply Building

---

- \$6.2 million set aside at January 8<sup>th</sup> E-board to support local community based child care supply building initiatives
- ELD will provide grants to Hubs, CCR&Rs and other community-based organizations to support supply building

