
COVID-19 Briefing for Senate and House Health Care Committees

March 5, 2020

Patrick Allen

Director, Oregon Health Authority

Lillian Shirley

Public Health Director



Summary

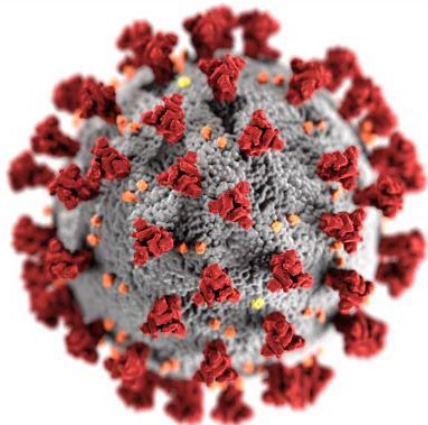
- There are two presumptive confirmed cases and one confirmed case of COVID-19 in Oregon.
- The situation is evolving. State, federal and local partners are working together to limit COVID-19 infections.
- Oregon hospitals and healthcare systems have scaled up preparedness efforts to address the threat of COVID-19 in our state.

Background

Dec 2019

Jan 21, 2020

Mar. 4, 2020



Global Cases

93,090

U.S. Cases

80

Oregon Cases

3

Current status of COVID-19 in Oregon

Persons Under Investigation (PUI)

Positive	3
Negative	45
Pending	13

Persons Under Monitoring (PUM)

Current as of 3/4/2020	115
Completed 14-day monitoring without developing symptoms or were determined to have no risk	238
Total PUM since 1/24/2020	353

What we know about COVID-19



- COVID-19 main symptoms

- Fever
- Cough
- Shortness of breath



- Most people with COVID-19

- Appear to have mild disease
- Don't require a medical visit

- COVID-19 spreads when people touch or breathe in droplets of ill people who

- Cough
- Sneeze
- Talk



- Rarely, people may catch COVID-19 when they:

- Touch a surface an ill person coughed or sneezed on
- Then touch their own mouth, nose or eyes.

Test Processing



The Oregon State Public Health Laboratory in Hillsboro has received COVID-19 test kits from the CDC.



Testing is only done at the request of health care providers.

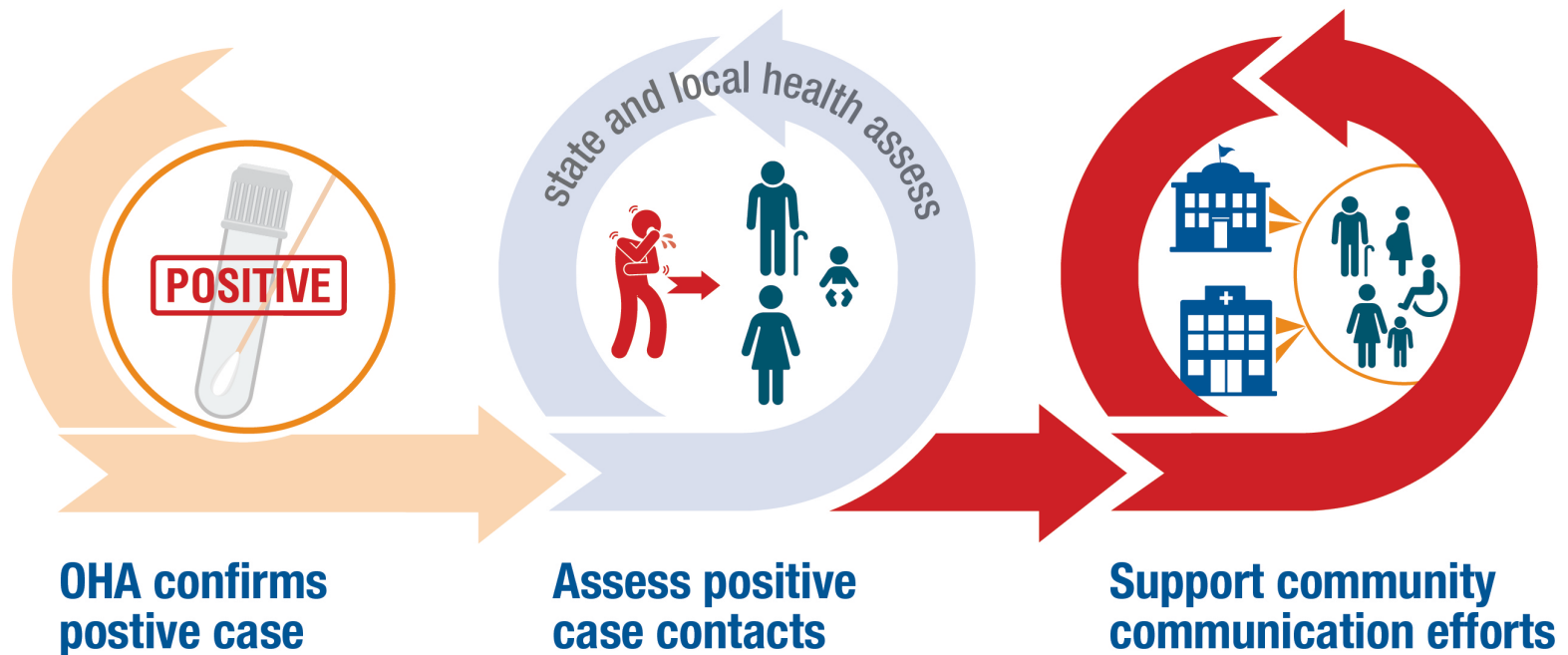


Turnaround time for testing reports is 24–48 hours. This is an estimate subject to change.



If the test is positive, the sample will be sent to the CDC for confirmation.

Coordination around cases



Health System Preparedness

- In close contact with hospitals and providers, evaluating their capacity and needs
- Prepared to meet potential medical surges with the Oregon Crisis Care Guidance
- Monitoring for supply shortages
- State agencies are taking coordinated action
- Emergency coordination center opened to support our agency operations

Preparedness for an Outbreak in Oregon

- Situation is evolving with a changing environment and recommendations
- Potential disruptions in daily life: social distancing as well as impacts on schools, businesses or events

What you can do

- Proactively share OHA and CDC resources and coverage information with constituents.
- Bring questions and feedback to OHA.
- Engage with community partners.

Community Education and Support



OHA's website is regularly updated
healthoregon.org/coronavirus



211 is activated for public questions



Public materials are translated in multiple languages



Share OHA social messages and videos

@OregonHealthAuthority and
@OHAOregon

Discussion and Questions

