

# Senate Committee on Veterans – SB 1542

## Oregon Vietnam War Memorial



February 5, 2020



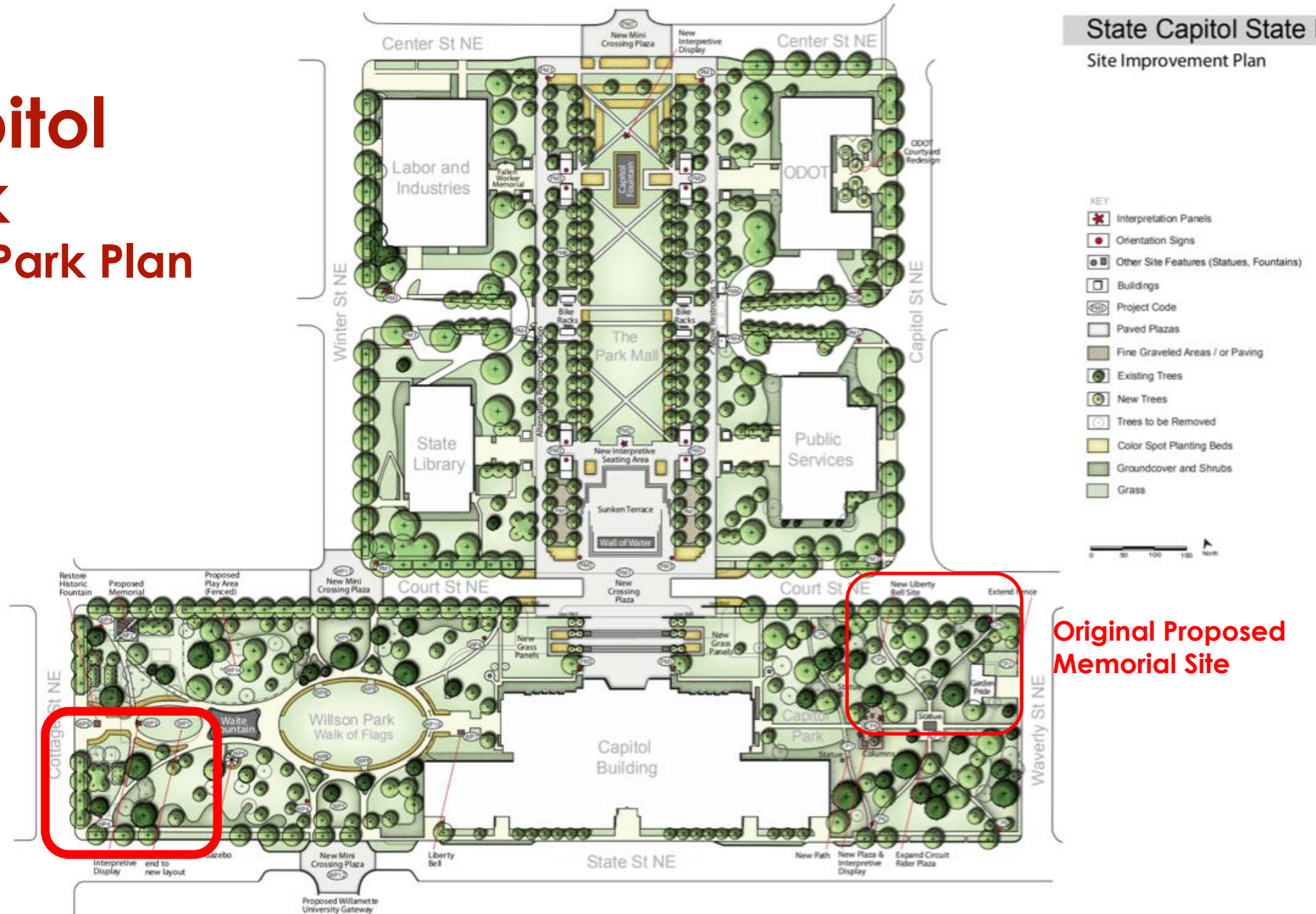
**Steve Bates**, President Oregon Vietnam War Memorial Fund

**Mike Abbaté**, FASLA Landscape Architect



# State Capitol State Park 2010 General Park Plan

## State Capitol State Park Site Improvement Plan

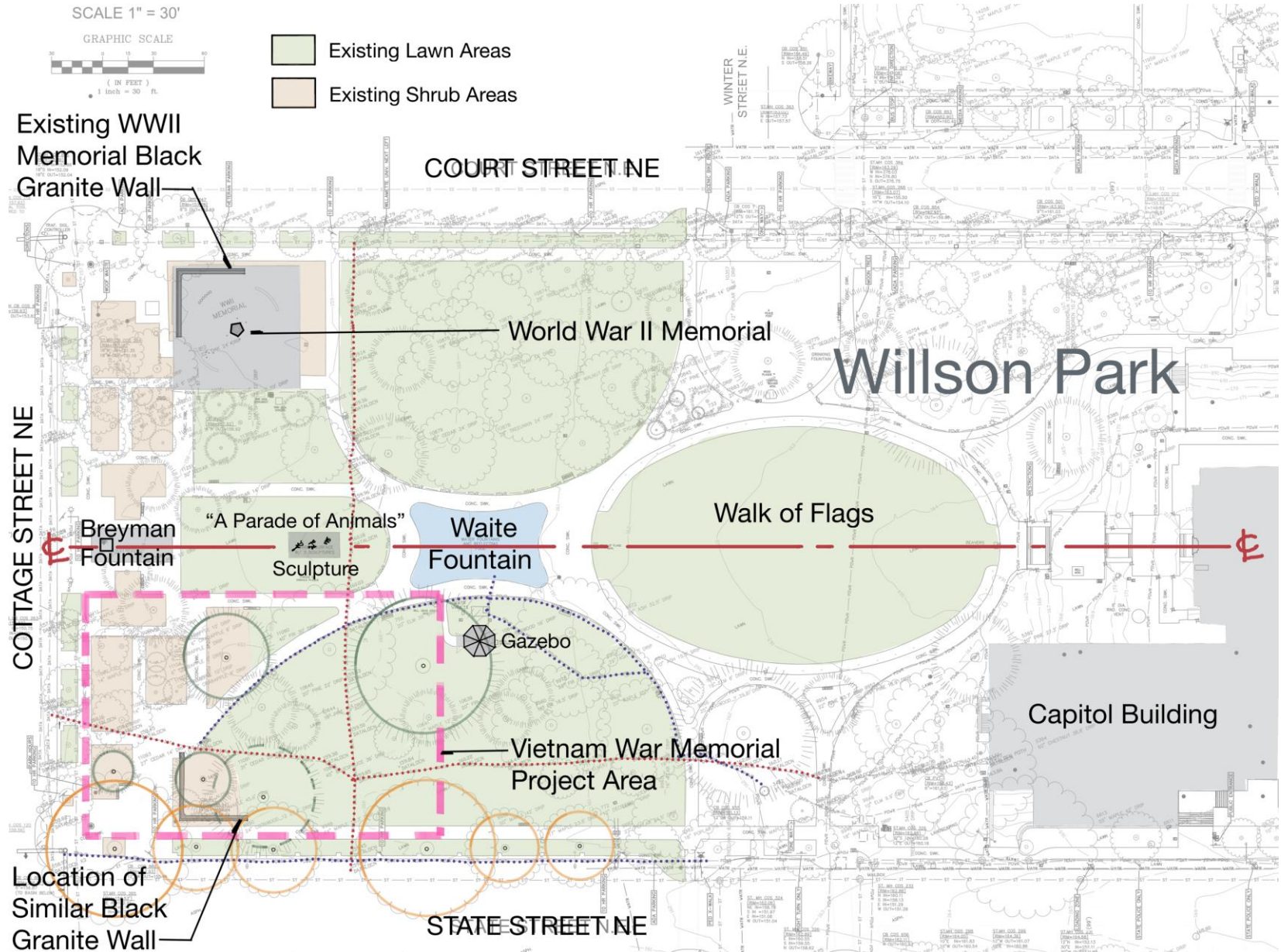


Current Proposed Memorial Site

Original Proposed Memorial Site



# Site Context



# Site Photos



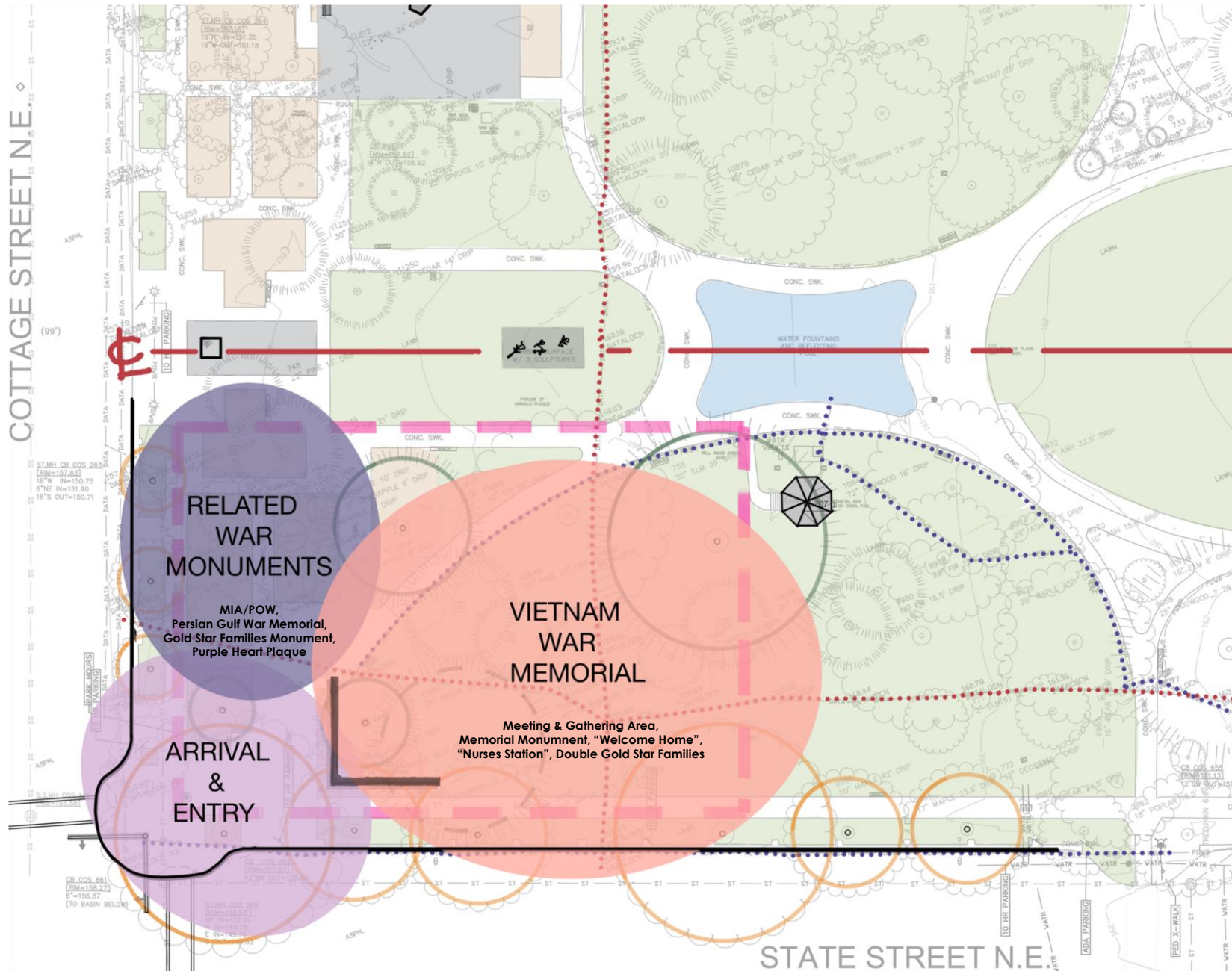
Looking SE at WWII Memorial Site



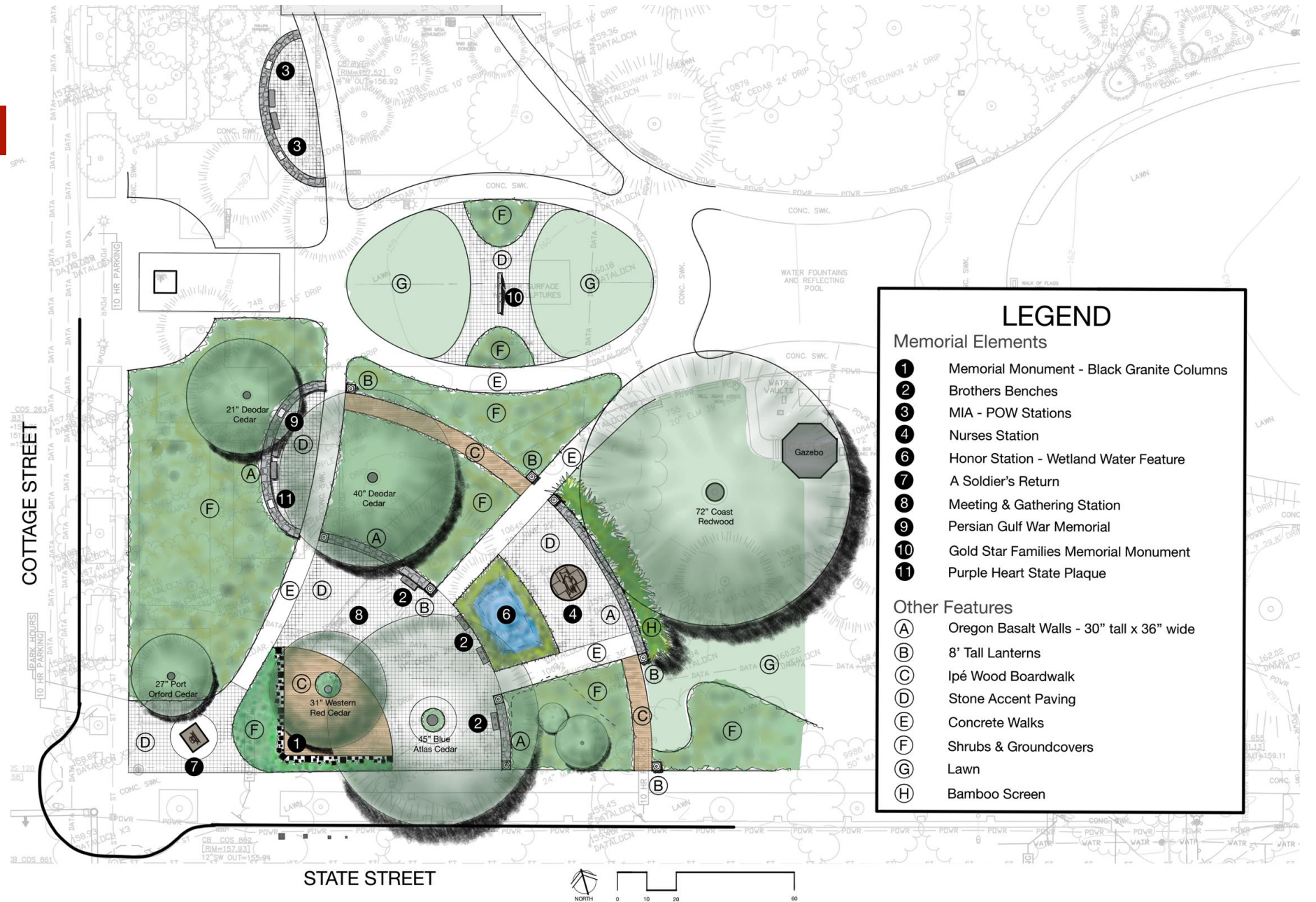
Looking NE at Vietnam War Memorial Site



# Site Zoning Diagram



# Memorial Plan:



### LEGEND

**Memorial Elements**

- ① Memorial Monument - Black Granite Columns
- ② Brothers Benches
- ③ MIA - POW Stations
- ④ Nurses Station
- ⑥ Honor Station - Wetland Water Feature
- ⑦ A Soldier's Return
- ⑧ Meeting & Gathering Station
- ⑨ Persian Gulf War Memorial
- ⑩ Gold Star Families Memorial Monument
- ⑪ Purple Heart State Plaque

**Other Features**

- (A) Oregon Basalt Walls - 30" tall x 36" wide
- (B) 8' Tall Lanterns
- (C) Ipé Wood Boardwalk
- (D) Stone Accent Paving
- (E) Concrete Walks
- (F) Shrubs & Groundcovers
- (G) Lawn
- (H) Bamboo Screen

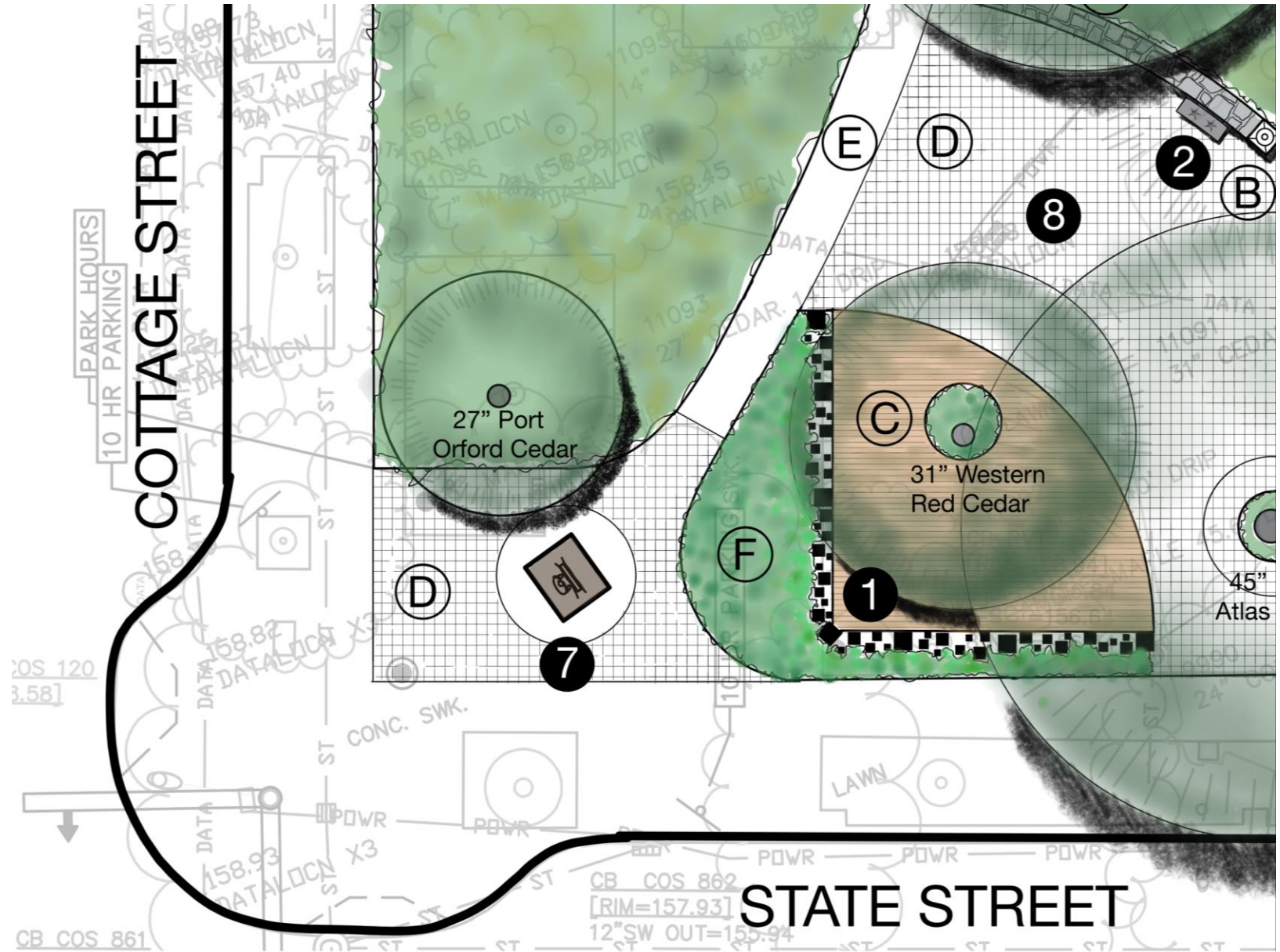


# Design Concept: Comparing the Wars & the Oregon Capitol's Memorials

	WWII	Vietnam
<b>WAR</b>	Solid Public Support	Fractured Public Support
	Vets Welcomed Home	Vets Ignored or Insulted
	Moms & Dads	Sons & Daughters
	WWII	Vietnam
<b>MEMORIAL</b>	Square Corners	Arcs & Curves
	No Nature	Embrace Nature
	Made of the World	Made of Oregon



# Schematic Design Plan: SW Corner





# Design Images: View at Memorial Entry @ Cottage & State Streets



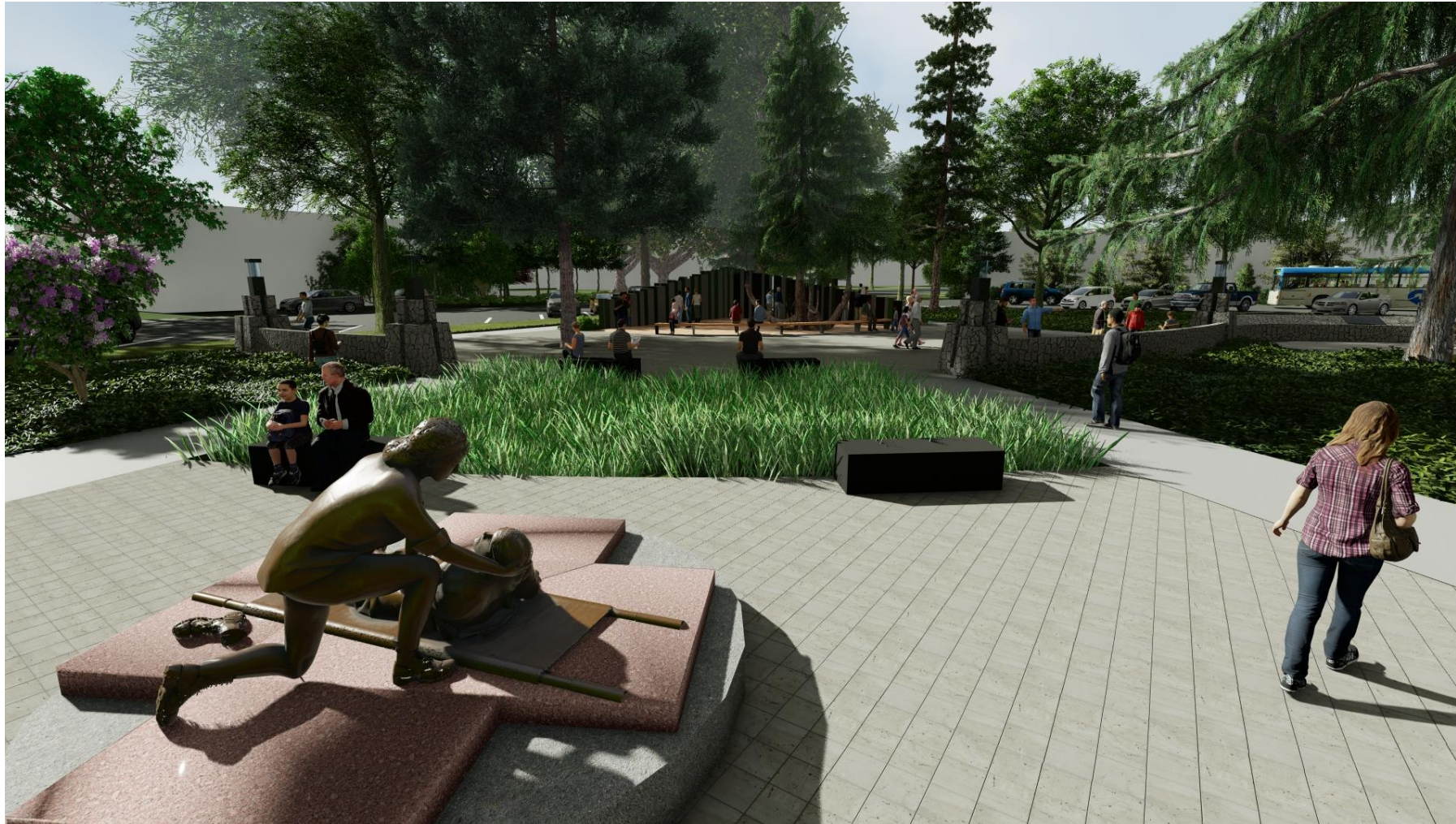
# Design Images: View SE across Meeting & Gathering Plaza



# Design Images: View of Inscribed Column Wall with “Embracing Tree”

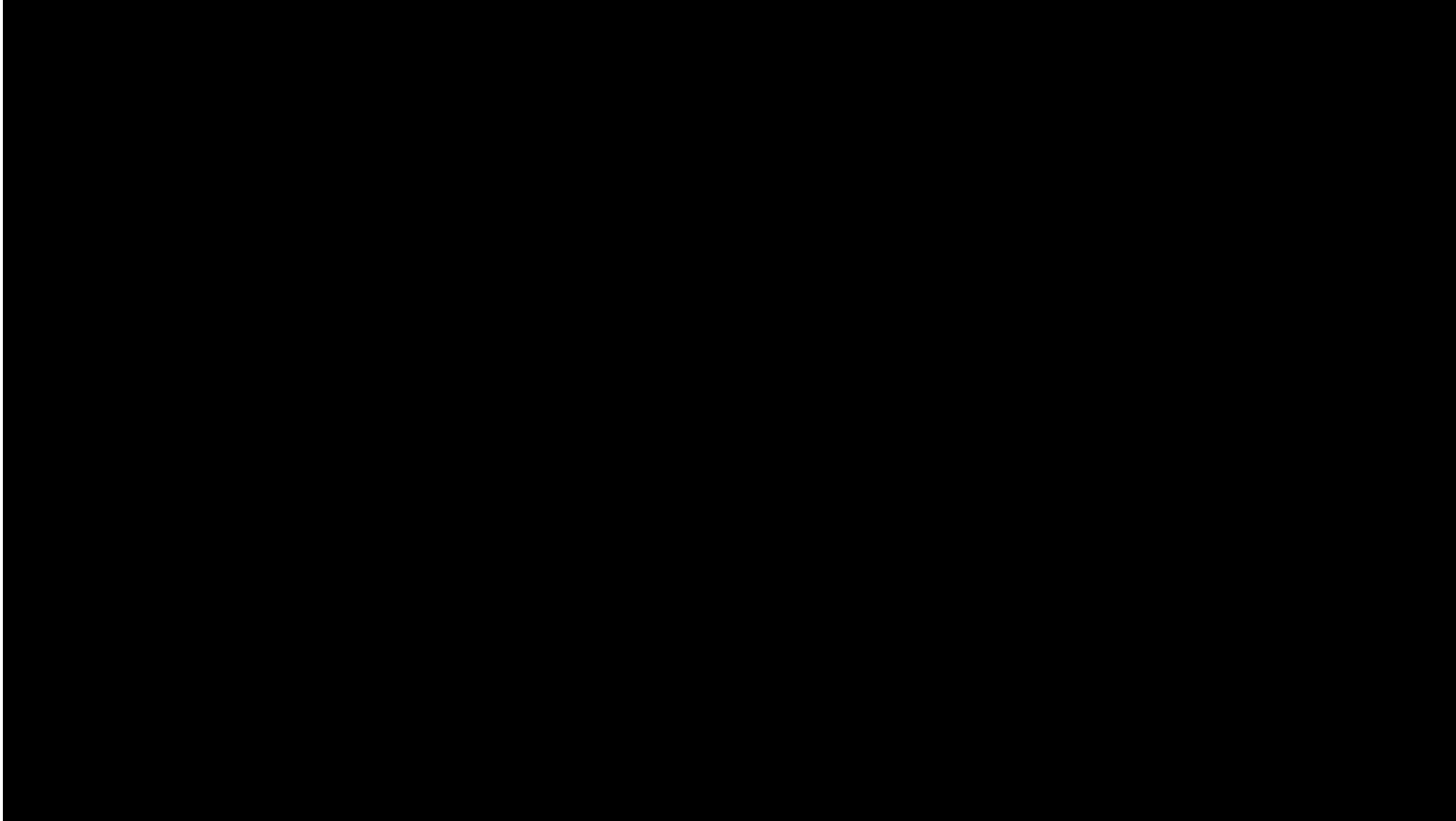


# Design Images: View SW with Nurses Sculpture and “Rain Paddy”



# Design Walkthrough Video:

<https://youtu.be/pWkHHUxORiY>



2/5/20



# Senate Committee on Veterans – SB 1542

## Oregon Vietnam War Memorial



February 5, 2020



**Steve Bates**, President Oregon Vietnam War Memorial Fund

**Mike Abbaté**, FASLA Landscape Architect

