

SB 1514: FUEL REDUCTION PROJECTS

CHAD DAVIS, ODF

DANIEL LEAVELL, OSU EXTENSION



ALIGNMENT WITH WILDFIRE COUNCIL RECOMMENDATIONS

#14: Near-Term Capital Infusion

- State should catalyze treatment the treatment program using state funds

#15: Prioritization

- Utilize Quantified Risk Assessment as primary lens

#16: Near-term Restoration Treatments

- On public land, target NEPA-approved acres
- Use public funds to pay for treatments where commercial volume insufficient

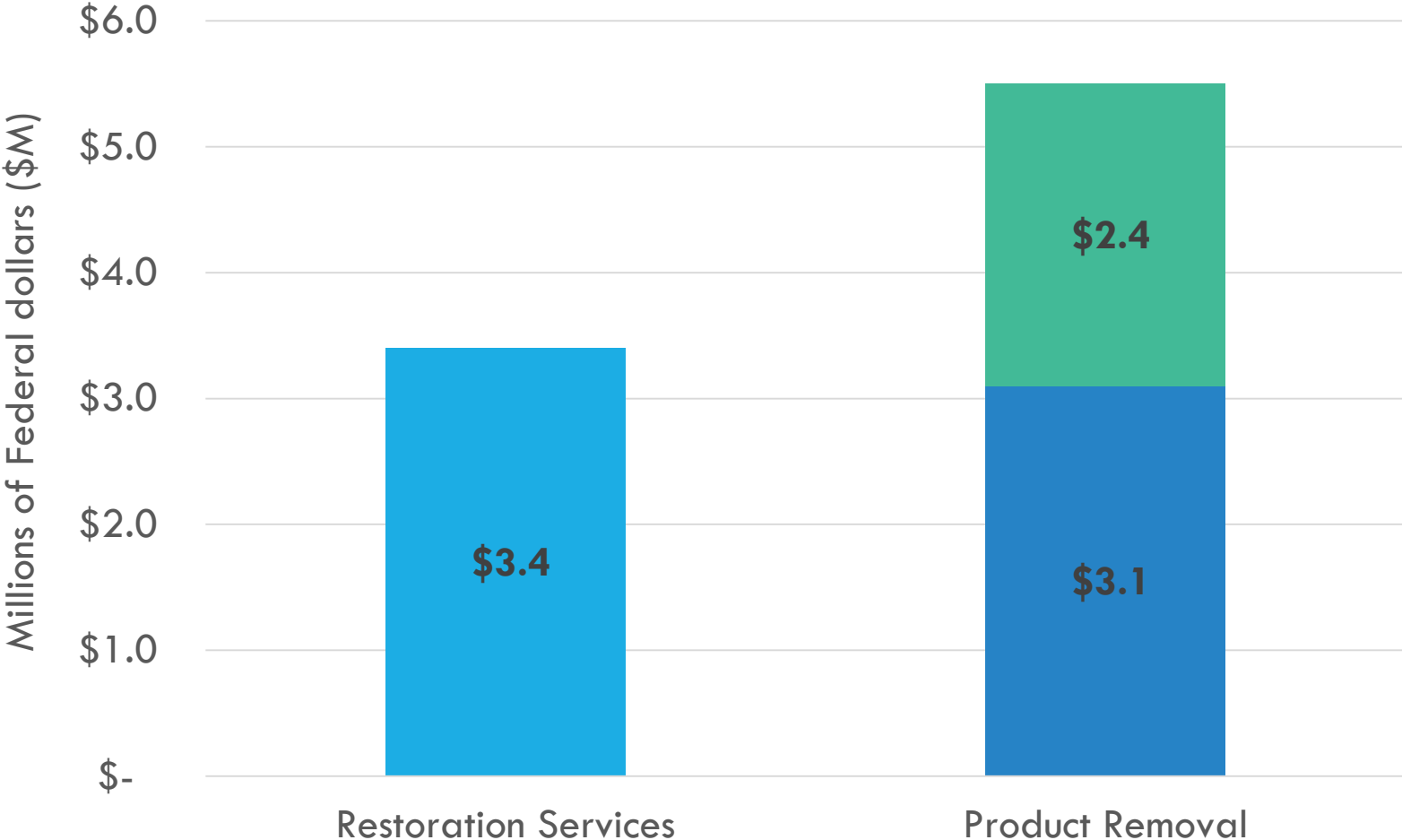
#17: Building Project Pipeline

- Collaborate with OSU Extension, Oregon Watershed Enhancement Board, and other organizations

#18 Program Expansion

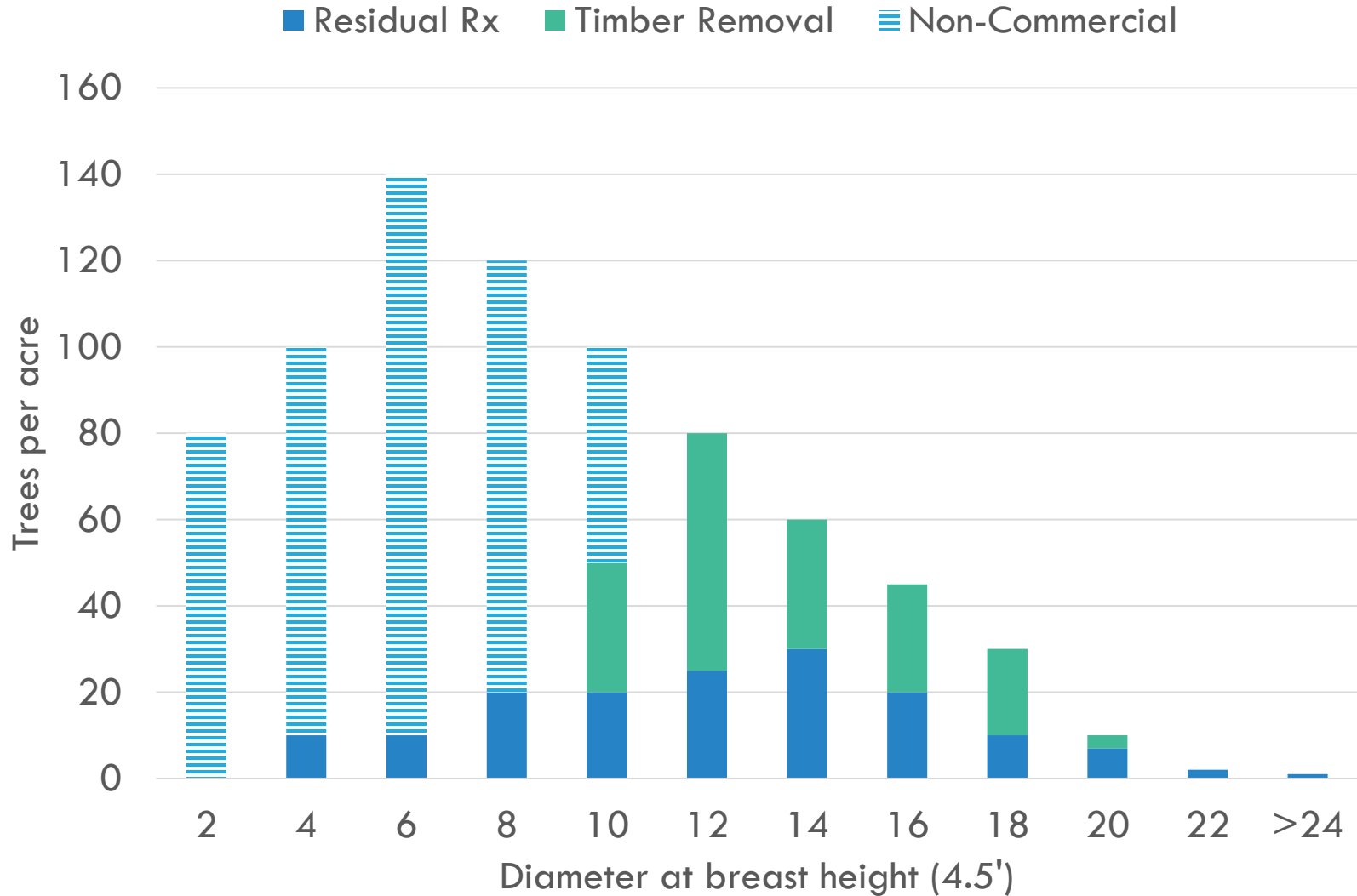
- Increase use of prescribed burns

GNA Authority Projects in Oregon



■ Reimbursable ■ In Agreement ■ Value Sold

Example Wildfire Resilience Treatment in Dry Forests



SB 1514 ALIGNS WITH WILDFIRE COUNCIL RECOMMENDATIONS

#14: Near-Term Capital Infusion

- State should catalyze treatment the treatment program using state funds

#15: Prioritization

- Utilize Quantified Risk Assessment as primary lens

#16: Near-term Restoration Treatments

- Use public funds to pay for treatments where commercial volume insufficient
- On public land, target NEPA-approved acres

#17: Building Project Pipeline

- Collaborate with OSU Extension, Oregon Watershed Enhancement Board, and other organizations

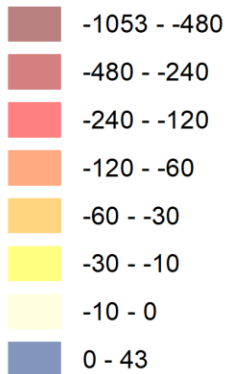
#18 Program Expansion

- Increase use of prescribed burns

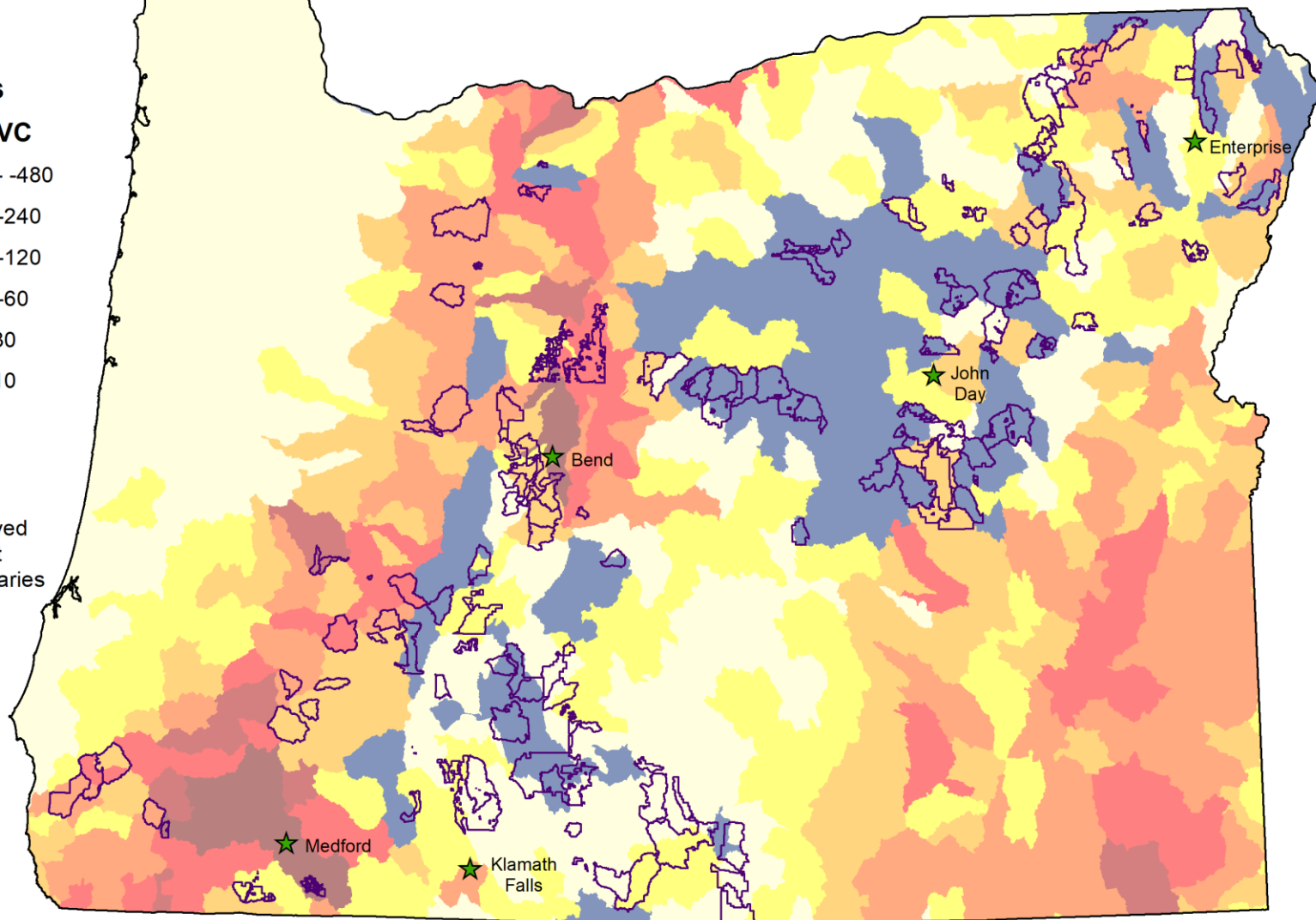
Quantitative Risk Assessment-Based Wildfire Risk (Expected Net Value Change Summarized to HUC 10) with U.S. Forest Service Shelf Stock Treatment Project Boundaries

Risk Class

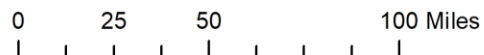
HUC 10 eNVC



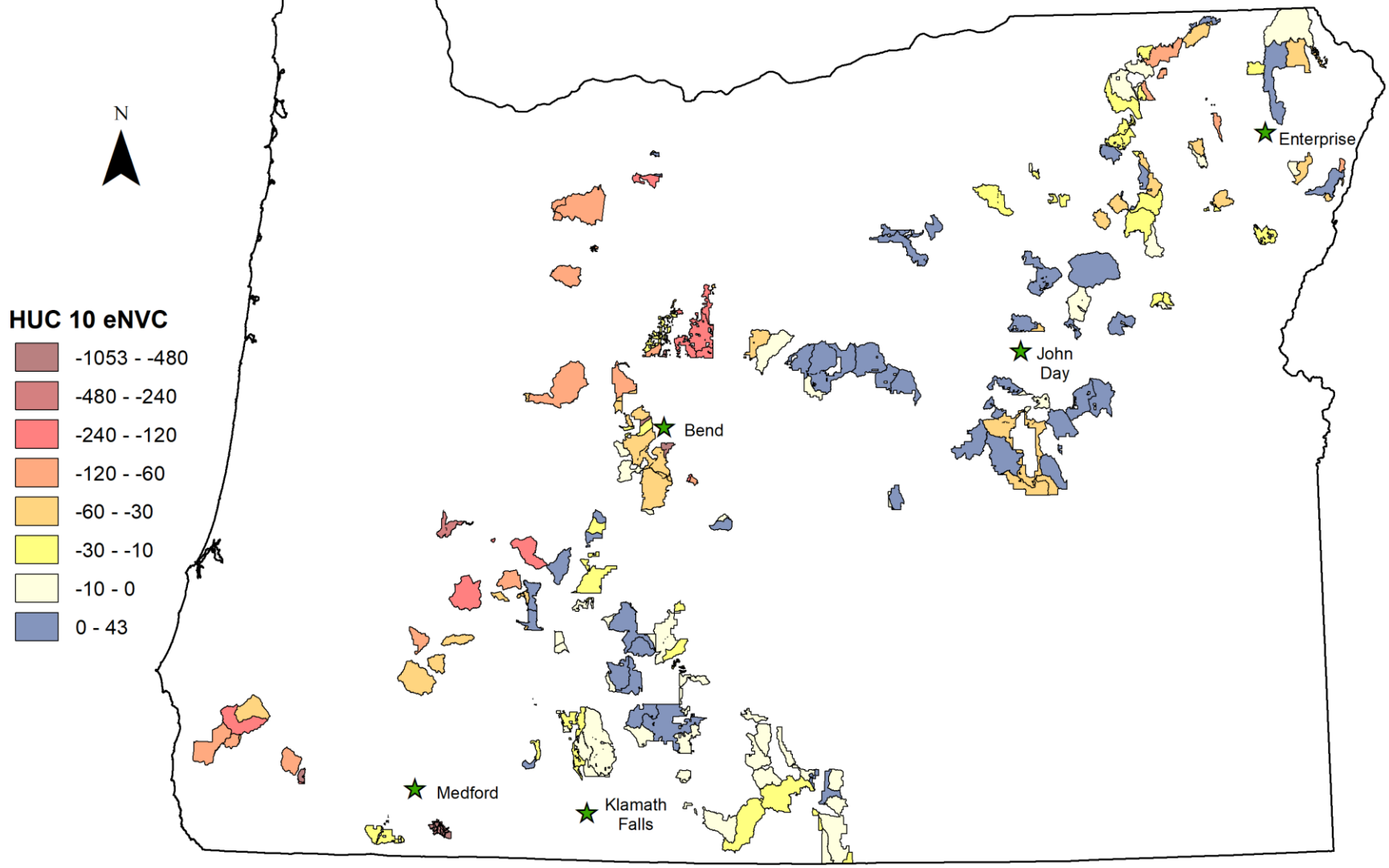
NEPA-
Approved
Project
Boundaries



NEPA project boundaries provided by U.S. Forest Service Region 6, January 2020.
HUC 10 risk classification adapted from Governor's Council for Wildfire Response,
Mitigation Committee Report, November 2019.
Map produced by Oregon Department of Forestry Partnership and Planning Program, January 2020.



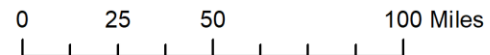
U.S. Forest Service NEPA-Approved Shelf Stock Treatment Project Areas Classified by QRA-Based Wildfire Risk Level (Expected Net Value Change Summarized to HUC 10)



NEPA project boundaries provided by U.S. Forest Service Region 6, January 2020.

HUC 10 risk classification adapted from Governor's Council for Wildfire Response, Mitigation Committee Report, November 2019.

Map produced by Oregon Department of Forestry Partnership and Planning Program, January 2020.



SB 1514 ALIGNS WITH WILDFIRE COUNCIL RECOMMENDATIONS

#14: Near-Term Capital Infusion

- State should catalyze treatment the treatment program using state funds

#15: Prioritization

- Utilize Quantified Risk Assessment as primary lens

#16: Near-term Restoration Treatments

- Use public funds to pay for treatments where commercial volume insufficient
- On public land, target NEPA-approved acres

#17: Building Project Pipeline

- Collaborate with OSU Extension, Oregon Watershed Enhancement Board, and other organizations

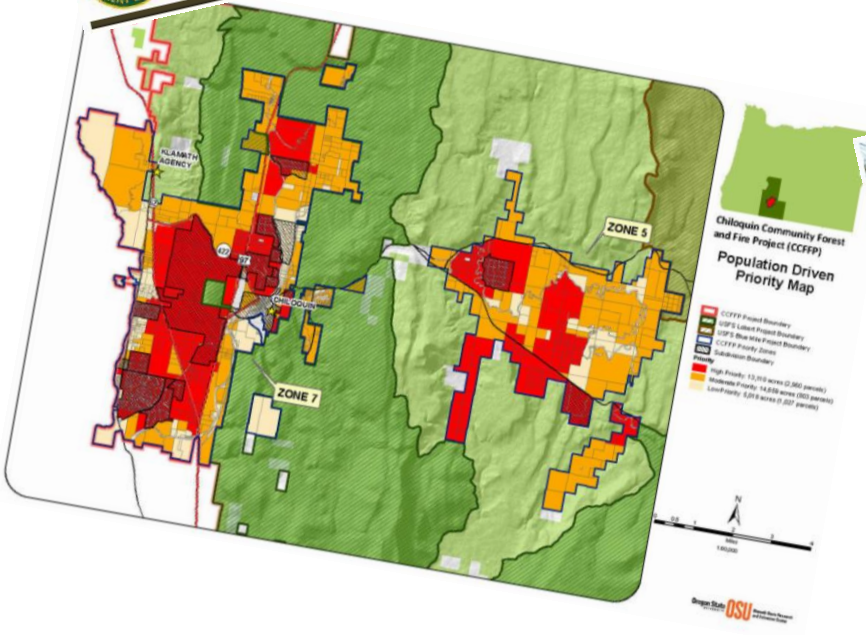
#18 Program Expansion

- Increase use of prescribed burns

ROGUE FOREST RESTORATION INITIATIVE

MY BLUE MOUNTAINS WOODLAND

PARTNERS EMPOWERING LANDOWNERS IN NORTHEASTERN OREGON TO REDUCE FIRE RISK AND PROTECT THE FOREST VALUES IMPORTANT TO THEM.



Ashland Forest All-Lands Restoration Initiative

A Controlled Burn in Action. Carefully managed burns help reduce the risk of catastrophic wildfire and maintain ecological health.

