



Other States Exploring Primary Care Trust Policy

Vermont and Rhode Island

Legislative Similarities of Policies



- Single Payment, Universal Access to Primary Care
- Establishment of a “Trust”
- Insurers allocate spending portion for primary care

Legislative Goals



- Invest in PC to contain health care spending growth
- Ensure all residents have primary care access without cost-sharing (e.g., copays)

Vermont – Policy Context



- Universal primary care program will build on and support exiting health reform efforts



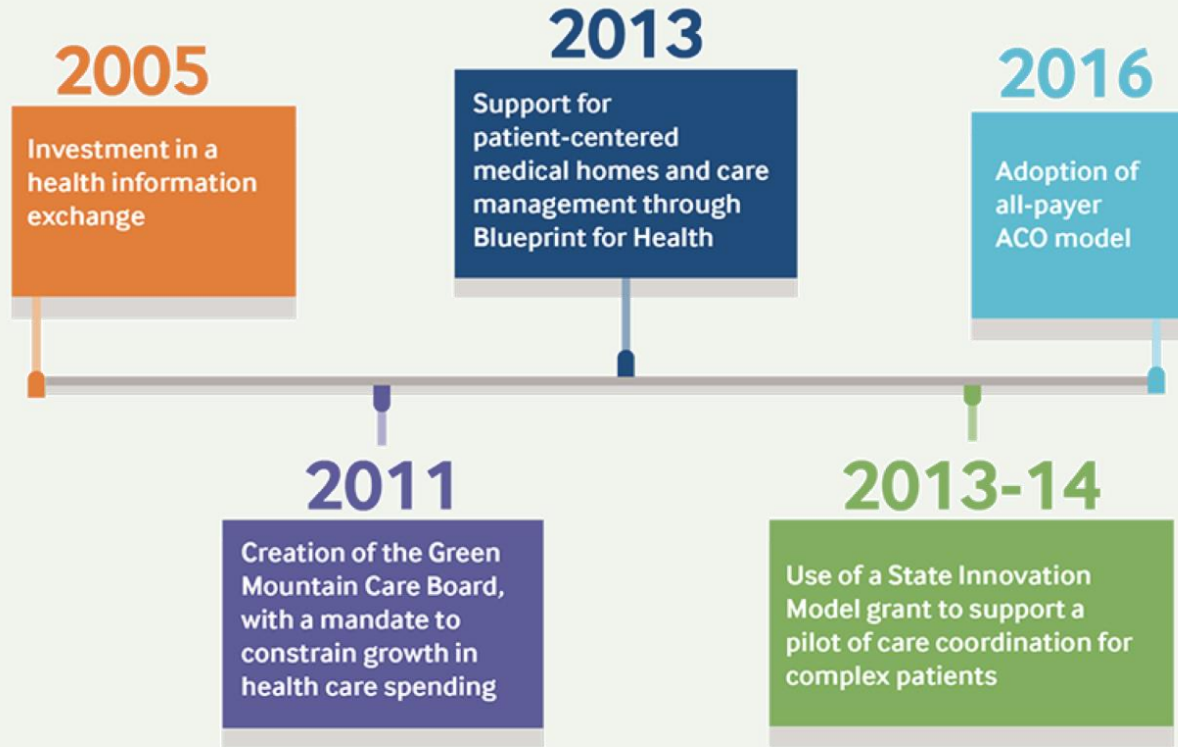
Smart choices. Powerful tools.



OneCare Vermont

OneCare Builds on Vermont's Health Reforms

OneCare knits together a range of Vermont's delivery system reforms, but its approach leans most heavily on the community health teams established by the Blueprint for Health initiative.



Vermont – Recent and Current Legislation



2018

- S.53: Framework for Primary Care Fund (Stalled in House Appropriations Committee)

2019

- S.53: Modified and Passed – Directs GMCB and Department of Vermont Health Access to
 - Specify definition of primary care
 - Determine percentage of health care spending currently allocated to primary care
 - Report information by January 2020

Vermont – Recent and Current Legislation



2019 Continued

- H.129: Universal, publicly financed primary care program starting in 2023; creates Primary Care Fund
- H.89: Increasing the proportion of health care spending allocated to primary care
 - Determine proportion of current spending on primary care and to project the avoided costs
 - Directs payers to increase their primary care spending to 12% or more by 2025

Both bills currently in House Committee on Health Care



Rhode Island – Neighborhood Health Stations

- Multidisciplinary primary care practices
 - Provide 90% of the health services communities need, with goal of serving 90% of community
- Vision: Each community of 10,000 to 15,000 people in Rhode Island will have a Station





Rhode Island – Neighborhood Health Stations

- Services include:
 - Urgent care
 - Dental care
 - Mental and behavioral health care
 - Substance use disorder treatment and recovery support
 - Physical and occupational therapy
 - Nutrition
 - Home health
 - Chronic disease self-management
 - Emergency medical services





Rhode Island - Neighborhood Health Stations

- Funding
 - 501(c)(3) or quasi-public organization responsible for paying all primary care services costs
 - Money consolidated into Primary Care Trust
 - Capitation-based
 - State would assess health insurers a percentage of total projected medical spending to fund the trust





Rhode Island – Recent Legislation

- HB 7866 (2018):
 - Creates the “Primary Care Trust Act” requiring health insurers to allocate a portion of medical spending to primary care services
 - Creates a trust for administration of the program
 - Died in Committee





Blackstone Valley Community Health Care

- First Neighborhood Health Station, located in Central Falls, RI
 - Offers comprehensive and accessible health services (with extended hours)
 - Serving 70% of the community in first year with a goal of 90%

“In our first full year of operation, we reduced adolescent pregnancy in Central Falls by 24 percent, and reduced EMS use by 15 percent. And that’s just the beginning...”



References

1. Salinas A, Barbara R, Warner S, Vial RAR. *Universal Access to Care Work Group Report on Barriers and Incremental Steps to Universal Access.*; 2018. [https://www.oregonlegislature.gov/salinas/HealthCareDocuments/UAC Work Group Report FINAL 12.10.18 .pdf](https://www.oregonlegislature.gov/salinas/HealthCareDocuments/UAC%20Work%20Group%20Report%20FINAL%2012.10.18.pdf). Accessed May 25, 2019.
2. Hostetter M, Klein S, McCarthy D. Vermont's Experiment in Community-Driven Health Reform. <https://www.commonwealthfund.org/publications/case-study/2018/may/vermonts-bold-experiment-community-driven-health-care-reform>. Published 2018. Accessed May 26, 2019.
3. Lazris, A., Roth, A. and Brownlee, S. No More Lip Service; It's Time We Fixed Primary Care (Part Two). Health Affairs. <https://www.healthaffairs.org/doi/10.1377/hblog20181115.163117/full/>. Published 2019. Accessed 25 May 2019.
4. Richard P, Ku L, Dor A, Tan E, Shin P, Rosenbaum S. Cost Savings Associated With the Use of Community Health Centers. *J Ambul Care Manage.* 2012;35(1):50-59. doi:10.1097/JAC.0b013e31823d27b6
5. Fine M. Rhode Island Primary Care Trust: A strategy for neighborhood transformation. November 2014. <https://apha.confex.com/apha/142am/webprogram/Paper307768.html>. Accessed May 25, 2019.
6. Ahlquist S. First Neighborhood Health Station breaks ground in Central Falls. RIFuture.org. <http://www.rifuture.org/1st-neighborhood-health-station/>. Published 2016. Accessed May 25, 2019.
7. *The Central Falls Neighborhood Health Station.* [https://bluecrossmafoundation.org/sites/default/files/download/related/Blackstone Valley CHC_Overview.pdf](https://bluecrossmafoundation.org/sites/default/files/download/related/Blackstone%20Valley%20CHC_Overview.pdf). Accessed May 25, 2019.
8. Images used in order of appearance: http://statefirearmlaws.org/sites/default/files/states/images/sfl__vermont.svg;
https://www.statefirearmlaws.org/sites/default/files/states/images/sfl__rhodeisland.svg;
https://blueprintforhealth.vermont.gov/sites/bfh/files/doc_library/Blueprint-for-Health-101-March-2019.pdf;
[https://www.med.uvm.edu/images/2018_onecarevt_cmyk_inlinelogo/cme-images/2019_images/2018_onecarevt_cmyk_inlinelogo_\(002\).png?sfvrsn=66779153_0](https://www.med.uvm.edu/images/2018_onecarevt_cmyk_inlinelogo/cme-images/2019_images/2018_onecarevt_cmyk_inlinelogo_(002).png?sfvrsn=66779153_0;);
https://www.commonwealthfund.org/sites/default/files/___media_images_publications_case_study_2018_may_hostetter_onecare_vt_timeline.png; http://www.cmhospital.com/_data/images/pgphotos/Medical%20Home%20Photo.jpg;
http://www.bvchc.org/images/Now_Open_1000_1.jpg