

WATER
CONSERVATION
IN THE
DESCHUTES
BASIN
& SB935

Doug Riggs

*Central Oregon cities
organization*

*Redmond, madras, bend, Maupin,
culver, Prineville, sisters, la pine*

Figure 1. Deschutes Basin

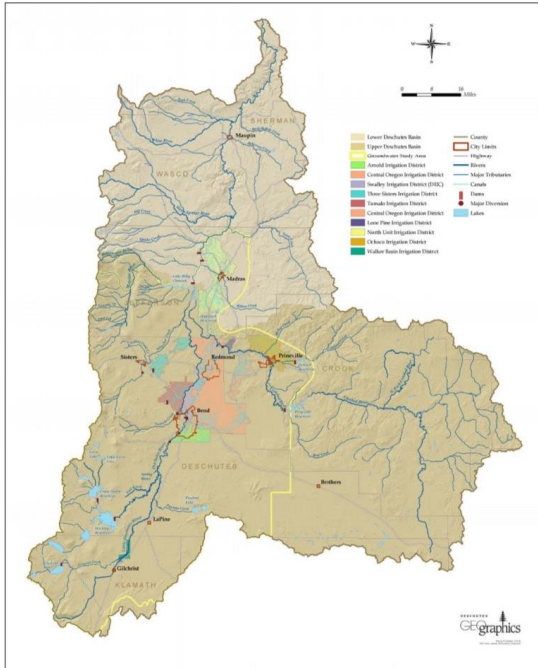
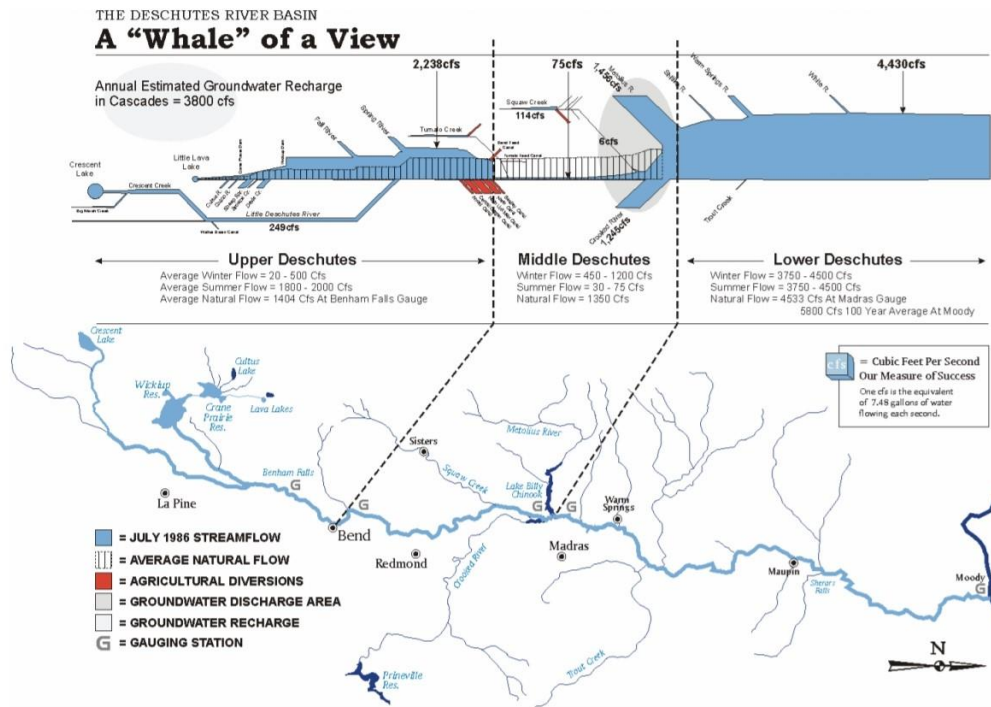


Figure 3. The ‘Blue Whale:’ Flow Regulation in the Deschutes



U.S. Department of the Interior
U.S. Geological Survey

Ground - Water Hydrology of the Upper Deschutes Basin, Oregon

BY MARSHALL W. GANNETT, KENNETH E. LITE JR.,
DAVID S. MORGAN, AND CHARLES A. COLLINS

Water-Resources Investigations Report 00-4162

Prepared in cooperation with Oregon Water Resources Department;
cities of Bend, Redmond, and Sisters; Deschutes and Jefferson Counties;
The Confederated Tribes of the Warm Springs Reservation of Oregon;
and U.S. Environmental Protection Agency

Portland, Oregon: 2001

Digitized by Google

Original from
UNIVERSITY OF CALIFORNIA

U. S. DEPARTMENT OF THE INTERIOR
BRUCE BABBITT, Secretary

U.S. GEOLOGICAL SURVEY
CHARLES G. GROAT, Director

G-2892
P1

Ground-Water Hydrology of the Upper Deschutes Basin, Oregon



U.S. DEPARTMENT OF THE INTERIOR
U.S. GEOLOGICAL SURVEY
Water-Resources Investigations
Report 00-4162

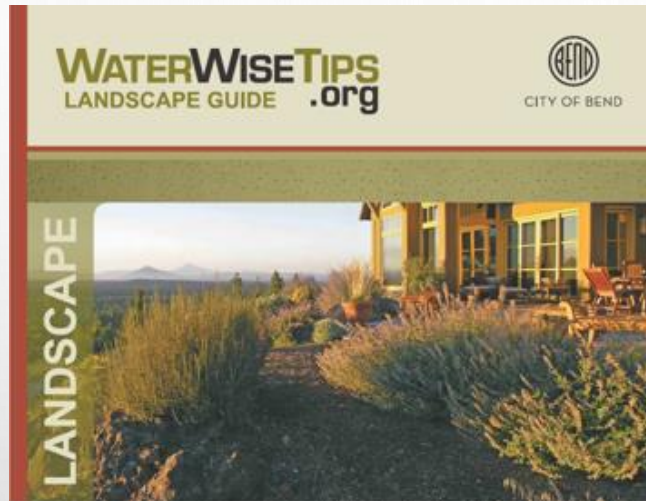


Prepared in cooperation with
OREGON WATER RESOURCES DEPARTMENT,
CITIES OF BEND, REDMOND, AND SISTERS,
DESCHUTES AND JEFFERSON COUNTIES,
THE CONFEDERATED TRIBES OF THE
WARM SPRINGS RESERVATION OF OREGON,
and U.S. ENVIRONMENTAL PROTECTION AGENCY

Digitized by Google

Original from
UNIVERSITY OF CALIFORNIA

Water Management and Conservation Plans



SAVE THE DESCHUTES 7 TIPS FOR CONSERVING WATER

Start today!

- 1 Know when to water.**
A circular diagram shows a clock face with a sun in the upper half and a moon in the lower half. A water drop icon is at the bottom. The clock is divided into AM and PM.
URBAN
BEST TIME: 7pm-6am
AVOID: 6-9am & 5-7pm
NO WATER: 9am-5pm
RURAL
BEST TIME: 7pm-9am
AVOID: Hottest part of the day
- 2 Don't set it and forget it.**
Watering needs vary seasonally. Adjust your settings accordingly.
A bar chart shows monthly watering needs from J to D.
- 3 Maintain your irrigation systems.**
Up to 16% of water is lost due to leaks in irrigation systems.
Up to 50% can be lost in leaky canals.
Keep ditches free of debris for efficient water delivery.
An illustration shows a cracked pipe with a water drop falling from it.
- 4 Don't water the street!**
1 Concrete doesn't need water. Adjust and align nozzles to avoid wasteful overspray.
2 Mind your duration. Watering too long causes wasteful run off.
- 5 How much is too much?**
URBAN
Get a kit. A simple irrigation kit from the City of Bend provides a sprinkler gauge to measure your watering.
1 **RURAL** **2**
Measure. Use a flow meter or measurement device.
Check. If you are watering below the root zone, you are using too much water.
- 6 Get the right watering system for the job.**
TIPS
SHRUBS & PLANTER BEDS > drip or soaker hoses
LAWNS > sprinklers
FARMS > sprinklers or drip irrigation
Worn out nozzles waste water & energy. Water as evenly as possible. Install the most efficient system you can afford.
- 7 Grow less water-intensive plants and crops**
Change your landscaping from lawn > xeriscape.
URBAN
Shift to xeriscape. A small shift toward xeriscaping each year saves water and money. Free resources are available from the City of Bend.
RURAL
1 Grow drought-resistant crops.
2 Look into leasing. Not using your water? Contact the DRC for information about leasing back instream.

Find more water-saving tips and online resources at: deschutesriver.org/resources/conservewater

DID YOU KNOW
The largest opportunity to restore the Deschutes is through conservation of water on rural lands.



SILENT KILLER OF WATER CONSERVATION



