



Oregon International Port of Coos Bay

Gateway to Southwestern Oregon
Crucial Link in Natural Disaster Recovery

Port Property Overview

North Spit

- More than 1000 acres
- Offers marine, rail & road access
- Projects: Rail spurs, business development
- 6 active marine terminals

Charleston Marina Complex

- Moorage & marina Services
 - Ice Plant, moorage slips, boatyard
- Commercial Buildings
- RV Park
- Storage Units

Upper Bay & East Bay

- Eastside Boat Launch
- Multiple Terminals & Dock
- East Bay primarily vacant land

Coos Bay Rail Line

- Serves rural Coos, Lane, and Douglas Counties
- Supports 920 family wage jobs



Navigation channel



Depth: 37 feet

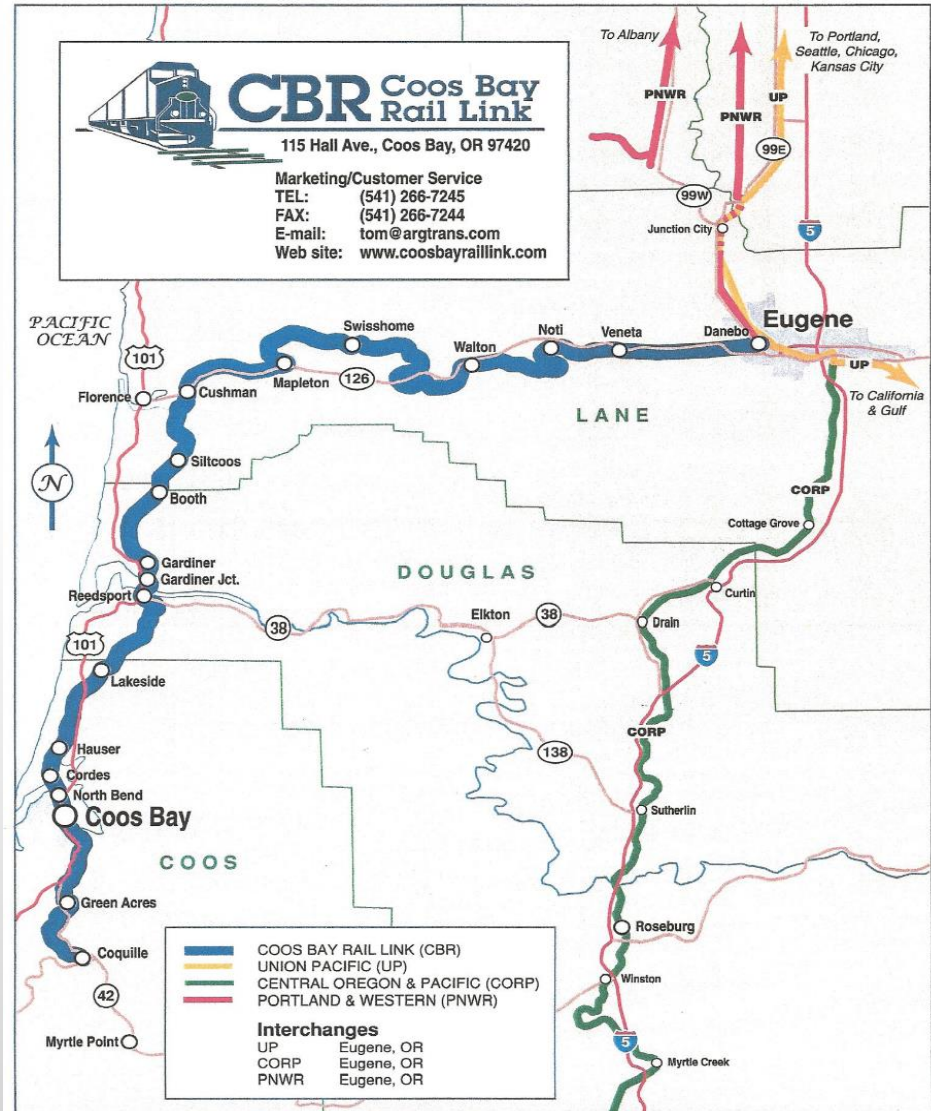
Length: 15.2 miles

Width: 300 feet

Pilotage and Tug Assist



Coos Bay rail line



- 134 mile rail line spanning from Coquille to Eugene
- Main Customers
 - Forest products manufacturing
 - Dairy
- 7500 revenue rail cars per year
 - Anticipated growth of 2,000-3,000 cars next year

Southwest Oregon Regional Airport



- Passenger service to San Francisco, seasonal service to Denver
- Freight cargo
- Medical air service
- Chartered flights

Highway Connectivity:

- Highway 101
- Highway 38
- Highway 126
- Highway 42

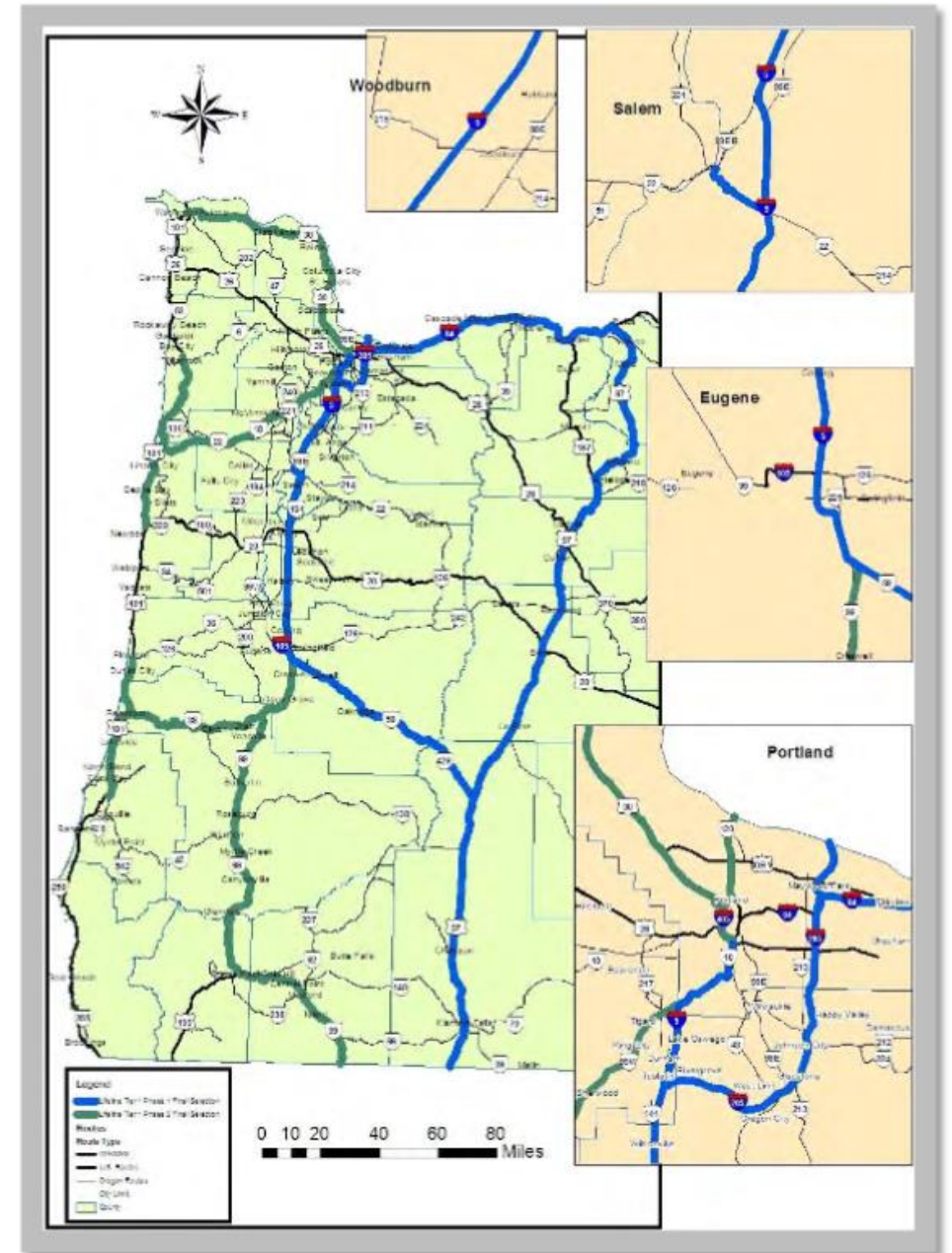
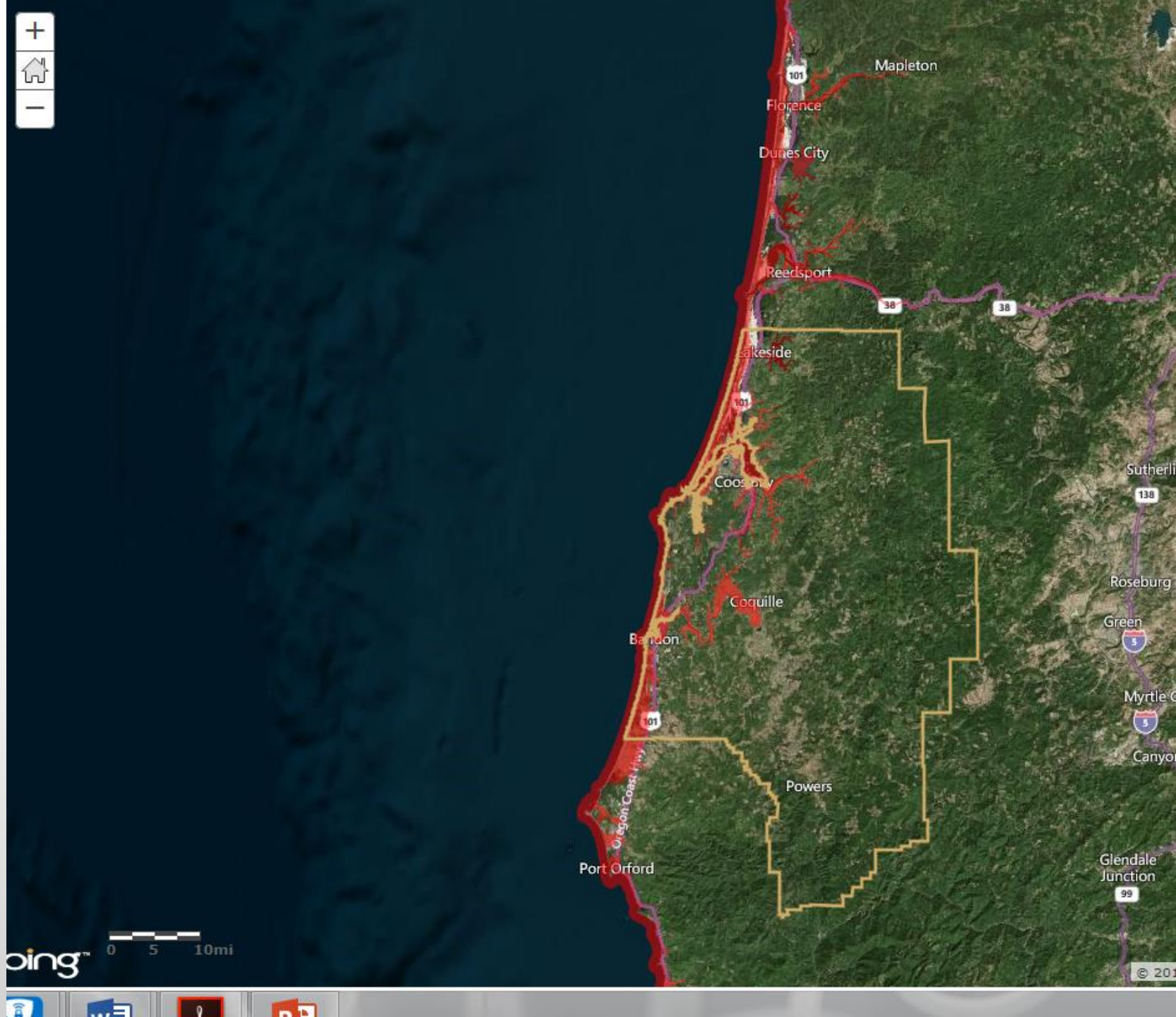
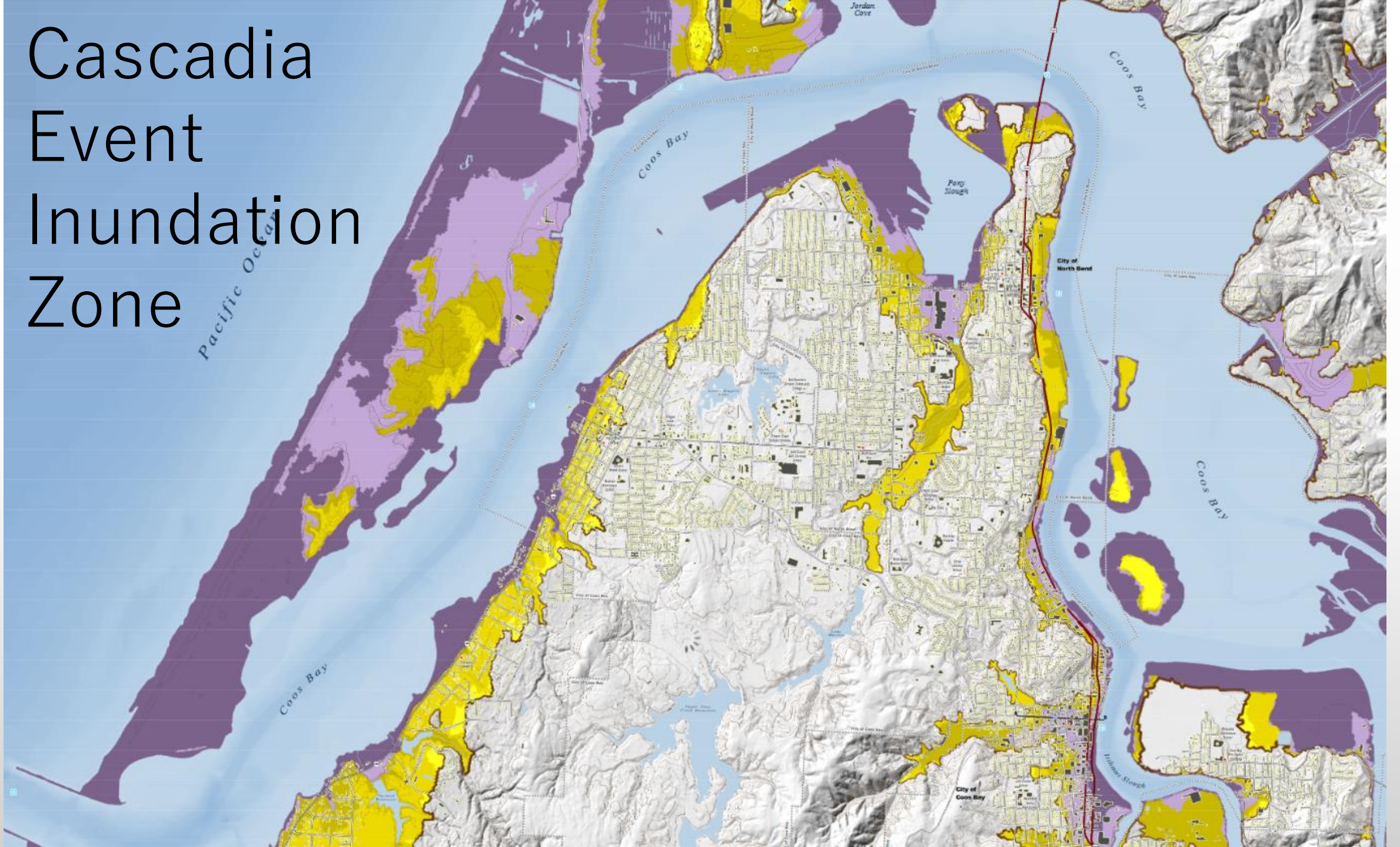


Figure 5.23 –Map of Seismic Options Program: Tier 1 Routes (Source: ODOT – Bridge Section)

XXL Tsunami Inundation Scenario



Cascadia Event Inundation Zone



Expected Impacts of a Cascadia/Tsunami Event

- Transportation system – only air and maritime
- Electrical power transmission and distribution grid
- Water and wastewater systems
- Communications systems
- Debris – challenges to navigation
- Infrastructure damage



Highway 101 Landslide



1964 Alaska Earthquake Damage



Sendai Airport runway following the 2011 Japan earthquake



Marine
Terminal

Japan 2011
Miyako Port



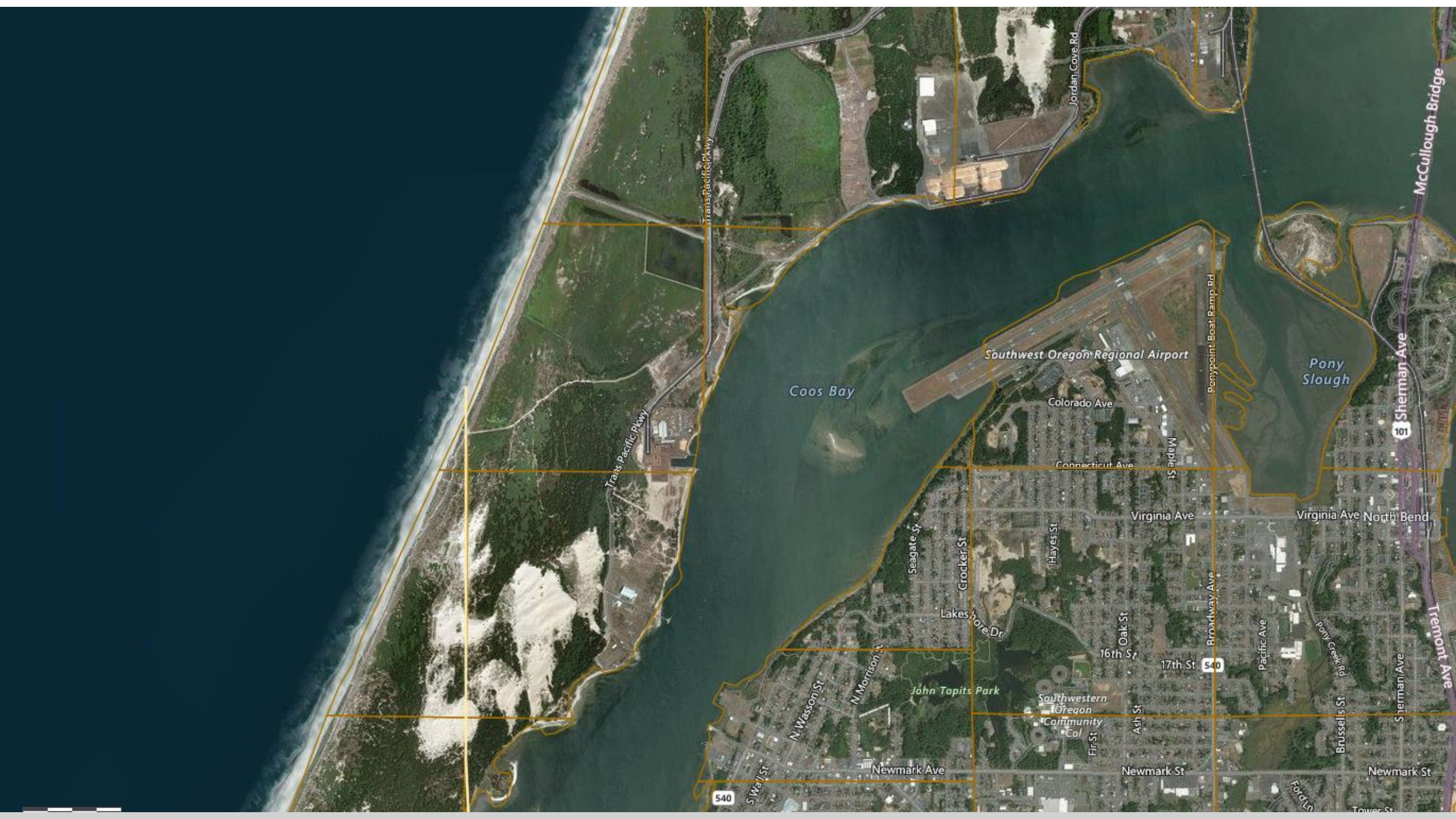
Head United States
Naval Facility



bing

© 2018 Microsoft Corporation, © 2018 DigitalGlobe, © CNES (2018) Distribution Airbus DS, © 201...

POWERED BY
esri



Coos Bay

Southwest Oregon Regional Airport

Pony Slough

McCullough Bridge

101 Sherman Ave

Virginia Ave North Bend

Tremont Ave

Newmark St

Tower St

Brussels St

Pony Creek Rd

Pacific Ave

Broadway Ave

17th St

Ash St

Newmark St

16th St

Fir St

Southwestern Oregon Community Col

Lakeshore Dr

John Topits Park

N Morrison St

N Wason St

Newmark Ave

Seagate St

Crocker St

Colorado Ave

Connecticut Ave

Ponypoint Boat Ramp Rd

Jordan Cove Rd

Trans Pacific Pkwy

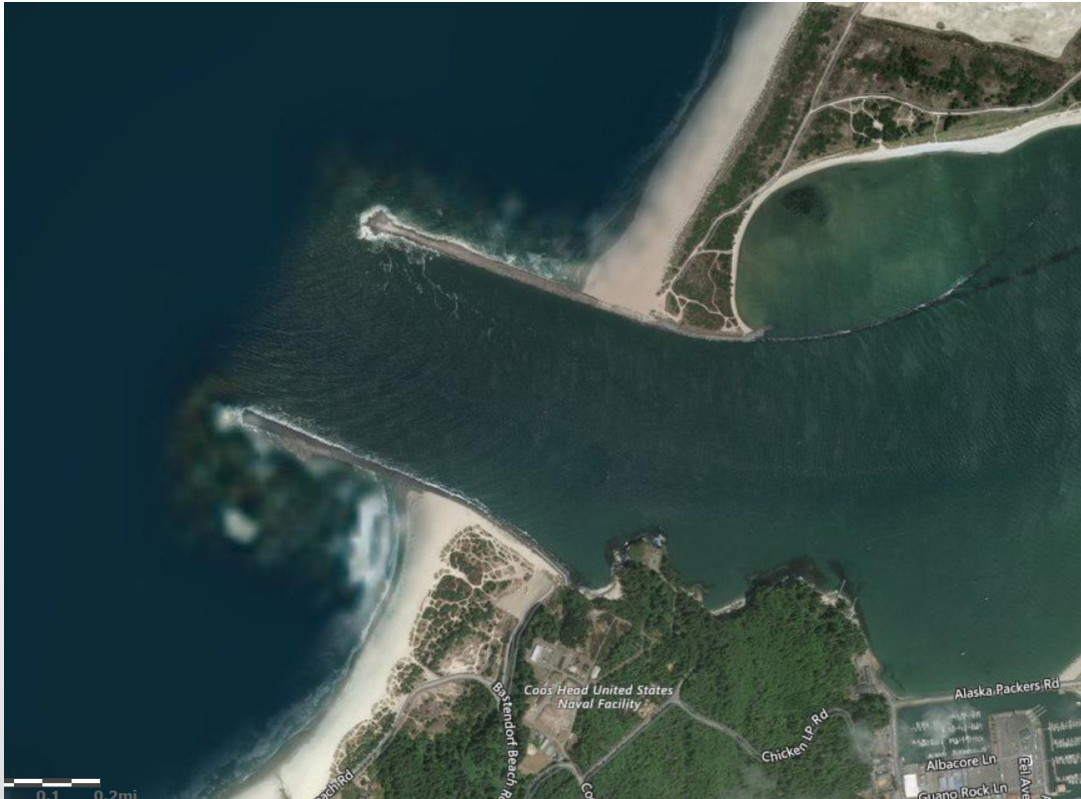
Trans Pacific Pkwy

540

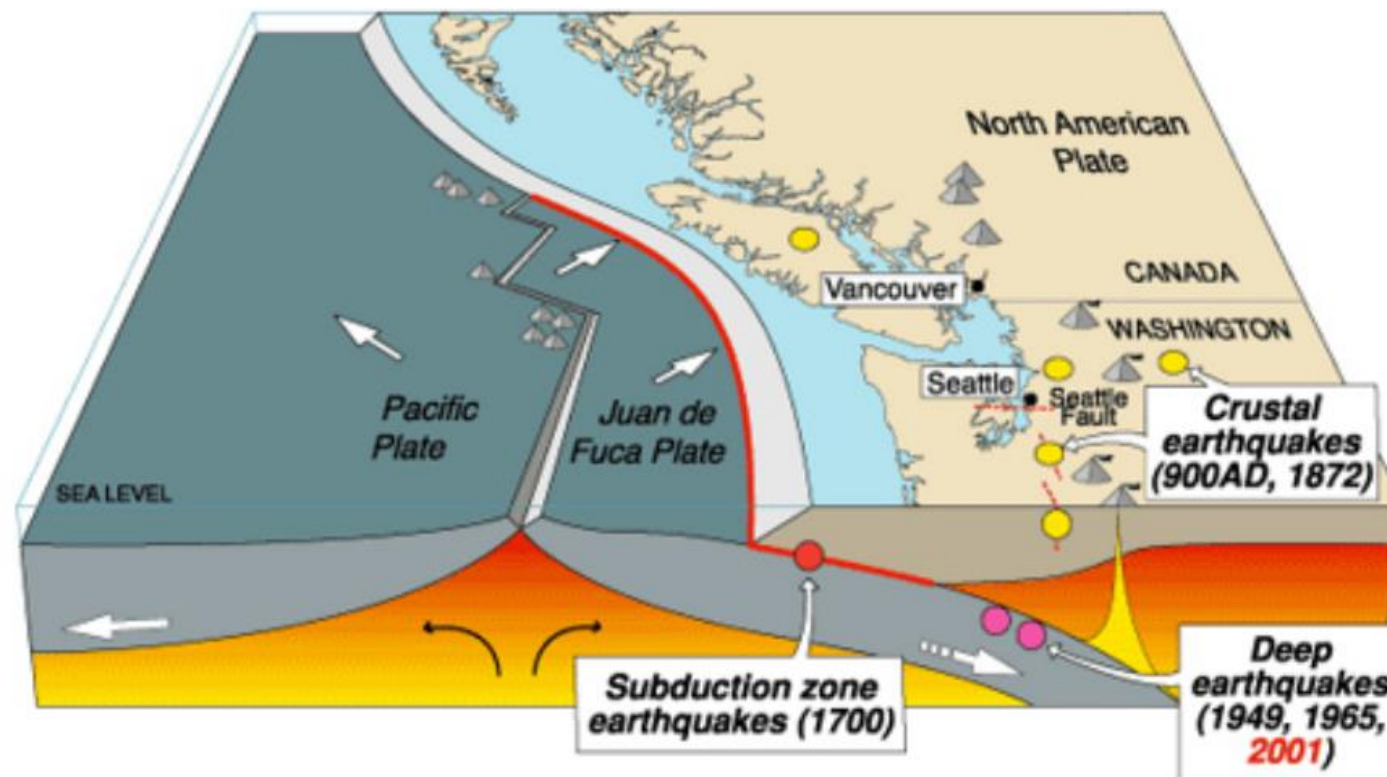
540

Vulnerability Assessment and Gap Analysis

- Jetties
- Rail
- Dock and Terminal Structures



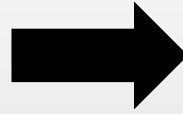
Cascadia earthquake sources



Source	Affected area	Max. Size	Recurrence
● Subduction Zone	W.WA, OR, CA	M 9	500-600 yr
● Deep Juan de Fuca plate	W.WA, OR,	M 7+	30-50 yr
● Crustal faults	WA, OR, CA	M 7+	Hundreds of yr?

Multi-Use Terminal

- Future buildout can be equipped to meet highest seismic specifications to provide area for emergency supplies landing



Thank you for your time!

Questions?

Thomas Durand, Maritime Operations Manager
Oregon International Port of Coos Bay

541-266-3719

541-294-7426 (c)

tdurand@portofcoosbay.com

