



April 19, 2019

Representative Paul Holvey, Co-Chair  
Senator Fred Girod, Co-Chair  
Joint Committee on Ways and Means Subcommittee on Capital Construction  
Oregon State Capitol  
900 Court Street NE,  
Room H-178  
Salem, Oregon 97301

Dear Co-Chairs:

This letter is written in support of the \$4.2 million funding request for the Jefferson County Health & Wellness Campus in Madras, Oregon.

Faced with some of the worst health outcomes in the State, the Jefferson County community has come up with a comprehensive solution to improve the delivery and health outcomes of Oregon's 2<sup>nd</sup> most distressed county using the Business Oregon model.

The Jefferson County Health & Wellness Center will be a 21,200 square foot building adjacent to the St. Charles Medical Center in Madras that would be shared by Jefferson County Public Health and Mosaic Medical (private, nonprofit Community Health Center/FQHC). The \$8.9 million public/private sector partnership includes \$2.1 million from Jefferson County, \$2.1 from Mosaic Medical, and an additional .5 million from St. Charles Medical Center. Through a consolidation of medical and health services on one transit and patient friendly campus, Jefferson County will make significant health improvements with the investment.

Support from the State for this proposed medical campus is critical given the clients that they serve and the 4<sup>th</sup> lowest property assessed value in Oregon. Already at the 5<sup>th</sup> highest County General Fund contribution to Public Health per capita, an integrated solution with private, county, and state dollars is the only recourse to reversing outcomes.

We encourage the Subcommittee to include funding for the Jefferson County Health and Wellness Campus in HB 5030.

Sincerely,

Daniel Bonham  
State Representative, House District 59

Cliff Bentz  
State Senator, Senate District 30

# Jefferson County – Health & Wellness Campus

(Request \$4,200,000 of \$8,900,000 project – Phase 1)



**PROJECT:** Construct and furnish a 21,200 square foot building adjacent to the St. Charles Medical Center that would be shared by Jefferson County Public Health and Mosaic Medical (private, nonprofit Community Health Center/FQHC). Project also includes constructing utility, transit, and parking infrastructure to support additional buildings for health and wellness needs, including a facility for workforce daycare.

## LOCAL FUNDING:

- |                                     |             |
|-------------------------------------|-------------|
| 1. Jefferson County                 | \$2,100,000 |
| 2. Mosaic Medical                   | \$2,100,000 |
| 3. St. Charles Health System (Land) | \$500,000   |

## HEALTH FACTORS/DEMOGRAPHICS:

- Jefferson County has historically been ranked worst in both Health Outcomes and Health Factors.
- Jefferson County includes most of the Warm Springs Tribal population and is the most diverse county in Oregon with a non-white population of 39.1% (statisticalatlas.com).
- The Jefferson County 509-J School District’s student population is 71% non-white (3<sup>rd</sup> most diverse school district in Oregon) (2018 Oregon Educator Equity Report).
- Jefferson County Women, Infants, and Children (WIC) Services.
  - 71% of all pregnant women in Jefferson County are on WIC.
  - 70% of clients have children under the age of 5.
  - 70% of clients are Native American, Hispanic or Non-English Spoken Language.
- Jefferson County Reproductive Health Services.
  - 88.3% of clients below 138% of Federal Poverty Level (FPL).
  - 76.1% of clients <100% FPL.
  - 92% of clients are Native American, Hispanic or Non-English Spoken Language.
- Jefferson County Perinatal Care.
  - 67% of clients on OHP.



- Jefferson County has the HIGHEST Emergency Department (ED) visitation rate in Oregon (EDIE Dashboard). This rate is 52% higher the OHP Quality Incentive program goal.

#### FINANCIAL BENEFITS:

- The project will consolidate the medical system into a combined Health Campus that offers medical services accessed by low and moderate income families.
- The new facility will bring health programs onto one campus to avoid patients being redirected between different locations, sometimes causing delays or avoidance.
- The new facility located adjacent to the St. Charles Hospital allows Mosaic Medical and Jefferson County to avoid furnishing duplicated expensive imagery and certain lab equipment.
  - Health system savings \$175,000.
- With a Community Health Center adjacent to the Emergency Department the diversion of patients to primary care clinic services (UTI, upper respiratory infection, nausea, headache, etc) will allow progress towards qualifying for the the OHP Quality Incentive program.
  - OHP Quality Incentive Program - \$1,000,000 per year
  - Diversion to primary care clinic services to reach OHP benchmark for ED – savings of \$530,950 per year (1,517 visits @ \$350/visit) in avoided ED costs.
- Consolidated Health Campus with transit services will improve access to reproductive health services and perinatal care services. Madras and Bend offer the only birthing services in Central Oregon.
  - Increasing unintended pregnancies by 20% (46 to 54) of OHP clients will result in \$151,209 savings per year.

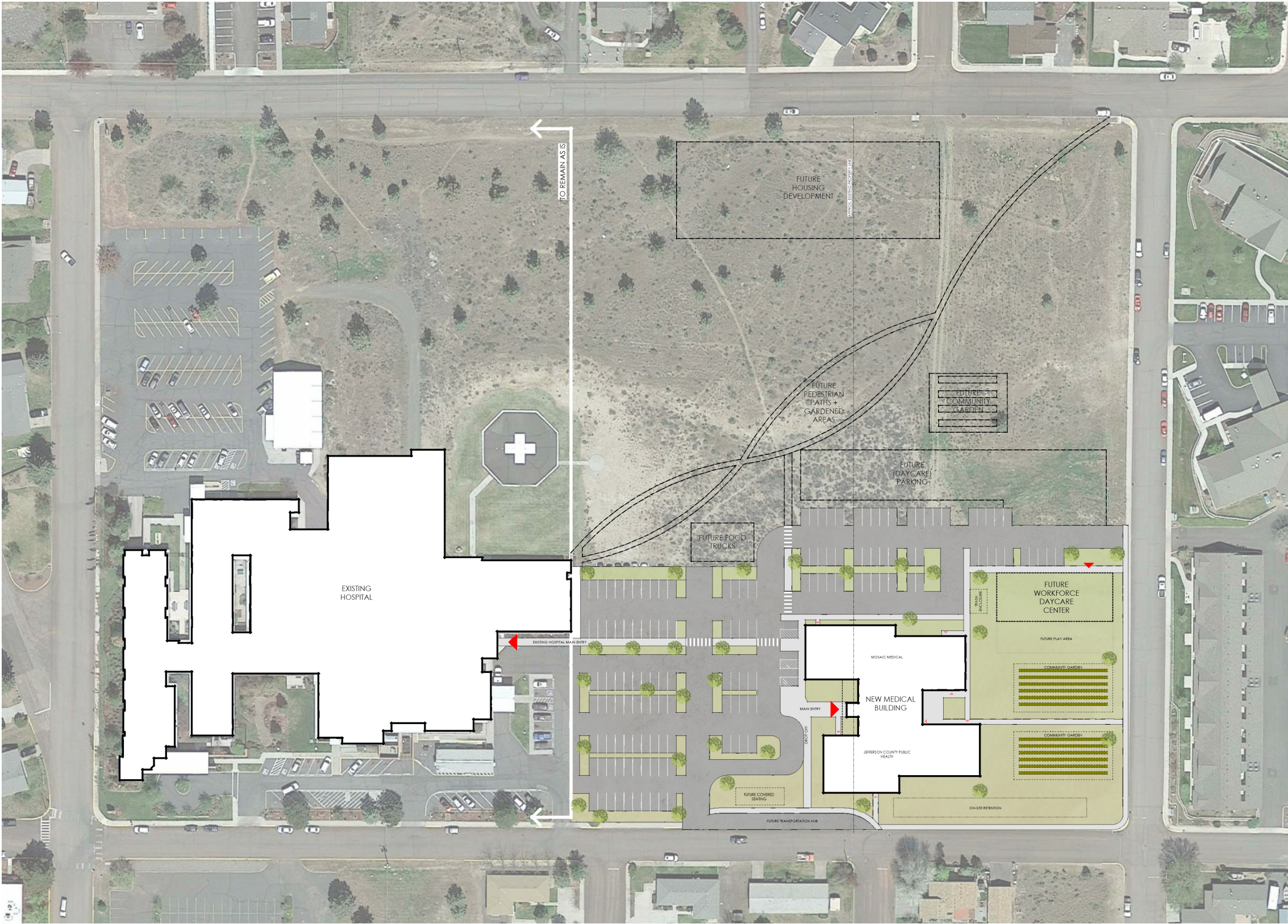
#### FINANCIAL NEED (Jefferson County):

- 2<sup>nd</sup> MOST Distressed County using the Business Oregon model.
- 11<sup>th</sup> HIGHEST Permanent General Fund property tax rate.
- 4<sup>th</sup> LOWEST Assessed Property Value per capita (FY 17-18 Property Values).
- 5<sup>th</sup> HIGHEST for County General Fund contribution to Public Health per capita (FY 17-18)



# JEFFERSON COUNTY MEDICAL BUILDING

PUBLIC HEALTH & MOSAIC MEDICAL



CONCEPTUAL SITE PLAN  
NOT TO SCALE



# JEFFERSON COUNTY MEDICAL BUILDING

## PUBLIC HEALTH & MOSAIC MEDICAL



CONCEPTUAL FLOOR PLAN  
NOT TO SCALE

BUILDING SQUARE FOOTAGE = APPROX. 21,200 SF



# JEFFERSON COUNTY MEDICAL BUILDING

PUBLIC HEALTH & MOSAIC MEDICAL



CONCEPT DESIGN PERSPECTIVES