

PRESENTATION

Aging and People with Disabilities

Joint Ways and Means Subcommittee on Human Services

**Aging and People with Disabilities Updates:
Eligibility & Policy Changes, Community Based Care Needs
April 18, 2019**



APD presentation outline

APD Eligibility and Policy Changes

- Background and Context
- 2015 Budget Note
- Lewin Report
- Legislative Budget Direction
- Actions: Live-In, Hours, Eligibility
- Results

Community Based Care Needs

- Access to Medicaid Community Based Services
- POP 121: Community Based Care Medicaid Access
- Governor's Proposal

APD's Vision

Oregon's older adults, people with disabilities and their families experience person-centered services, supports and early interventions that are innovative and help maintain independence, promote safety, well being, honor choice, respect cultural preferences and uphold dignity.



Goals

- **Well Being:** Older adults and people with disabilities feel safe and experience their best quality of life.
- **Accessibility:** Oregonians can readily and consistently access services and supports to meet their needs.
- **Quality Outcomes:** Oregonians engage in services and supports that are preventive, evidence-informed, and lead to quality outcomes.
- **Service Equity:** Oregonians experience programs, services and supports that are designed, improved and responsive to historical inequities, current disparities, and individual experiences.
- **Engagement:** Consumers are empowered by information, communication and advocacy through strong, collaborative partnerships with stakeholders and rich community dialogue.

APD Policy & Eligibility Changes

Background & Context

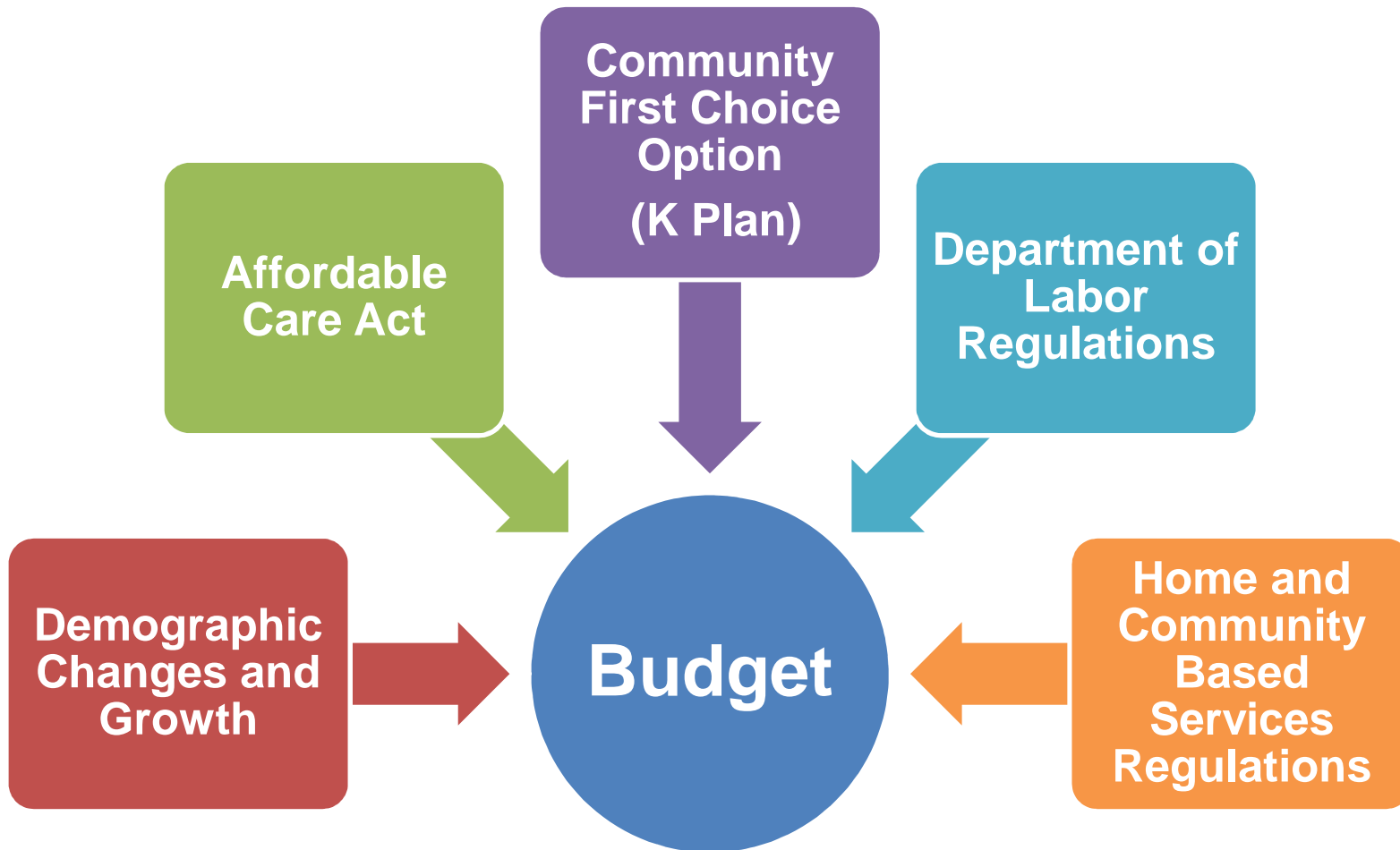
2015 Budget Note

Lewin Report

Legislative Budget Direction

Live-in, Hours Realignment and Eligibility

Background and Context



2015 Budget Note

Goal: Cap General Fund
Growth at 10 Percent

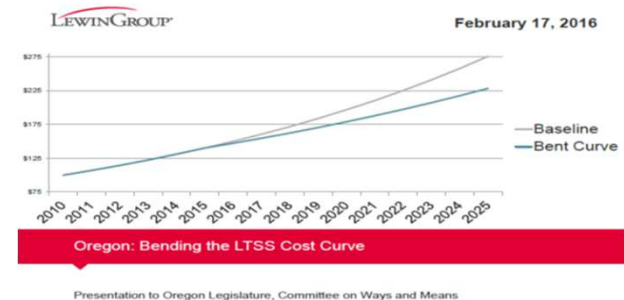
Issues to Explore:

Service
Eligibility

Income
Eligibility

Service
Array/Service
Level

Lewin Report: February 2016



- Options explored:
 - Reduce the number, or the rate of increase, of LTSS consumers
 - Reduce or redistribute the services authorized
 - Change consumer cost share
 - Increase integration
 - Leverage technology

Stakeholder Feedback to Lewin Report

- Opposition to integration (managed long-term services and supports)
- Preference to limiting services over capping enrollment, with neither option desirable
- Support for:
 - Increased funding for preventive services
 - Increased program accountability and oversight
 - Enhanced programs for services outside of institutions
 - Explore number of hours associated with actual need

2017 Legislative Session – Budget Direction

- 2017: The Oregon Legislature directed APD to reduce the growth in the budget for Medicaid long-term services and supports (LTSS).
- \$27 Million General Fund (GF) reduction for 2017-2019



APD Program Changes, October 2017

- **Live-In to Hourly Services:** Directed to close the live-in option to prevent an increase in cost of approximately \$47 Million.
 - Worked with consumers to switch from the live-in program to services on an hourly basis.
 - The program was closed to new consumers on July 1, 2016, and the program closed permanently on October 1, 2017
- **In-Home Hours Rebalancing:** Hours for service plans were modified to balance service needs and to reflect the results of an extensive time study.



APD Program Changes, October 2017

- **Assessment changes to Activities of Daily Living (ADLs):** Changing the ADL criteria for eligibility to better reflect the need for a nursing facility level of care.
- **Extended Waiver Eligibility:** For current consumers who no longer meet eligibility criteria, but would be at risk of homelessness or returning to an unsafe situation, APD continues to pay for their services and supports.



In-Home Hour Changes

- Hours are authorized based on need.
- APD contracted with an independent contractor to study how long tasks should take.
- Study showed that in some areas we were over authorizing hours and in others were not providing enough.
- APD made changes to maximum hours for in-home consumers, and overall, these changes resulted in \$10 million GF savings.

Possible Federal Litigation, and Subsequent Agreement

- February 2018: APD reaches agreement with the Oregon Law Center, Disability Rights Oregon and Legal Aid Services of Oregon to restore hours and eligibility.
 - **Key Issue:** Improving the notices to consumers to explain the changes to eligibility and hours, how it impacts them, and how they can request exceptions and appeals.
- May 2018: APD reaches agreement with advocacy groups, restores October 2017 changes, and provides more specific and person-centered communications to consumers about hours and eligibility.



Effects of October 2017 Changes: Existing Consumers and New Assessments

	Oct 2017-Sept 2018 (new assessment criteria)	Oct 2016-Sept 2017 (old assessment criteria)
Individuals reassessed	29,692	29,741
Number of existing consumers no longer eligible	1,210 (4.1%)	806 (2.7%)
New individuals assessed	15,406	15,466
Individuals ineligible for LTSS	3,512 (22.8%)	3,296 (21.3%)

Medicaid LTSS in 2019

- Significant changes over this biennium - impacts felt by our field staff (case managers and others) and consumers
- Long term services and supports program more fiscally sustainable and better positioned to meet future needs
- Efforts such as Extended Waiver Eligibility and agreement with advocates to minimize adverse impacts, and create more person-centered service planning

Community Based Care Needs

Access to Community Based
Care



POP 121: Community Based
Care Medicaid Access



Governor's Recommended
Budget

Access to Community Based Care

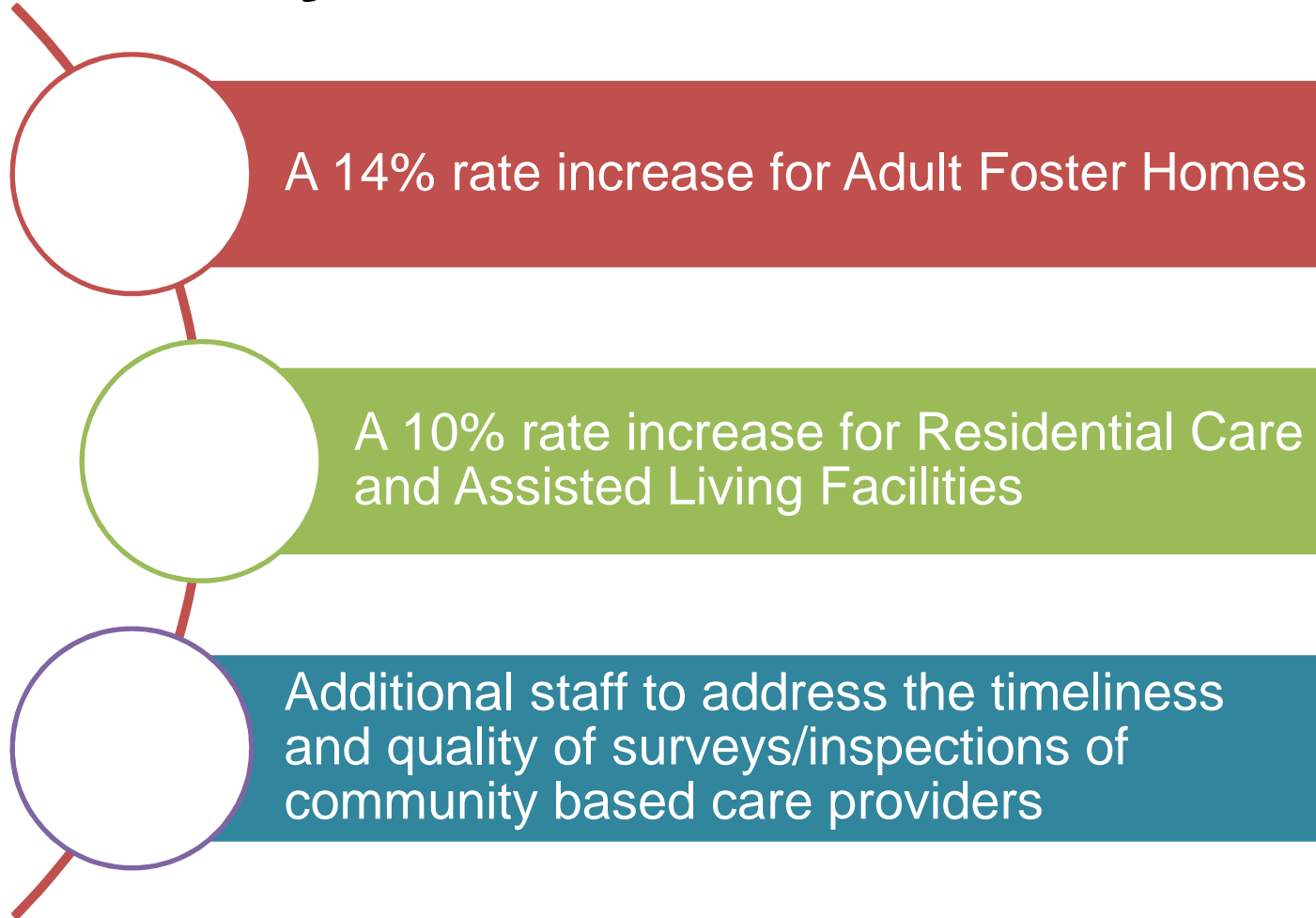
- New challenges to accessing community based care (Adult Foster Homes, Residential Care and Assisted Living Facilities):
 - Decline in Adult Foster Home capacity – 17% over the past four years
 - Workforce challenges – recruiting and retaining direct care staff
 - Private pay market – struggles to keep rates at a level so Medicaid consumers have access

POP 121 – APD's Original Proposal

- A 30% increase for Adult Foster Home rates, and a 10% increase for Residential Care and Assisted Living Facilities
- A \$500 per month add-on for facilities with a 75%+ Medicaid census
- 25 FTE increase in surveyors to meet oversight requirements



Governor's Recommended Budget-Community Based Care Access



Protecting Community Access

- Home and community based care is the bedrock of Oregon's system of long term services and supports.
- Maintaining access for Medicaid consumers is the cornerstone for equity.
- Adequate surveyor staff to ensure safety and compliance.



Wrap-up – Why All This Matters

Culture of Safety with values of
Independence, Choice and
Dignity

System
Sustainability

In-Home &
Community Care
Access

Thank you



www.Oregon.gov/DHS/seniors-disabilities

[@oregondhsAPD](https://twitter.com/oregondhsAPD)

twitter 



[@oregondhs.APD](https://www.facebook.com/oregondhs.APD)

dhs.directorsoffice@state.or.us

