



# **Oregon Statewide Longitudinal Data System (SLDS)**

**Ways and Means Education Subcommittee**

**April 16, 2019**

# Agenda

1. What is the Statewide Longitudinal Data System (SLDS)? Purpose, Mission, Vision, and History
2. Overview of SLDS Governance and Operations
  - SLDS Data Overview
  - Governance and Decision-Making
3. Executive Committee Vision
4. Cross-Sector Research and Data Analytics
5. Research Director Panel
6. Education Stakeholder Panel
7. Budget Overview

# Statewide Longitudinal Data System

**Guiding Question:** What are the educational and workforce outcomes for students in Oregon's public education system and what factors influence them?

**Issue:** Multiple systems under the leadership of the State of Oregon serve children, youth and adult Oregonians.

Policymakers and agencies across the sectors of government, educational institutions, communities and the public cannot accurately evaluate the impact of practices, programs and policies across these systems on the academic achievement, educational attainment and workforce outcomes of Oregonians of all ages.

**Solution:** Develop a longitudinal data system that collects and maintains detailed, high-quality student-level data that are linked across entities and over time. Utilize longitudinal data for research to inform policy and resource allocation decisions.

# Mission, Vision and Values

## Mission

The mission of the State Longitudinal Data System is to support objective analysis and reliable conclusions based on robust cross-sector, longitudinal education data.

## Vision

The State Longitudinal Data System provides actionable data to identify the impact of educational programs, policies, and investments to help individuals and communities in Oregon thrive.

## Values

Humility, Integrity, Equity, Accountability, Collaboration, and Growth

# SLDS | Background and History

**2015**

Senate Bill 215 directs the Chief Education Office to develop an integrated, statewide data system that contains student-level outcomes from all public educational institutions

**2016**

The Legislature approves funding for the SLDS IT Project in the 2016 Interim Session

**2018**

SLDS IT Project completes in June;  
SLDS Director begins in October

**Current Status**

Transitioning from IT project to fully operational program that is accessible to researchers, policy makers and the public

# SLDS | Current Data

Sector	Scope of Data
K-12 Education	Year 2006 - Most Recent Oregon Department of Education
	1.8 million records
Higher Education 2-year and 4-year Oregon institutions	Year 2000 - Most Recent Higher Education Coordinating Commission
	2.5 million records
Employment – Workforce	Year 2000 - Most Recent Oregon Employment Department
	1.6 millions records

# SLDS | Now and Future Data

Sector	Scope of Data
K-12 Education	Year 2006 - Most Recent Oregon Department of Education
Higher Education 2-year and 4-year Oregon institutions	Year 2000 - Most Recent Higher Education Coordinating Commission
Employment – Workforce	Year 2000 - Most Recent Oregon Employment Department
Higher Education Data – Nationwide	Planned: Summer 2019
Higher Education – GED Programs	Planned: Summer 2019
Early Learning – Healthy Families	Planned: Fall/Winter 2019
P-20 Education – Educator Data	Planned: Fall/Winter 2019
Youth Development Division	Planned: Fall/Winter 2019
Health/Human Services/Corrections	Future

# SLDS | Matching and Reporting

## Data Imported from Agencies

- Represents existing agency data collections
- Imported after agency verification

## Matching Process

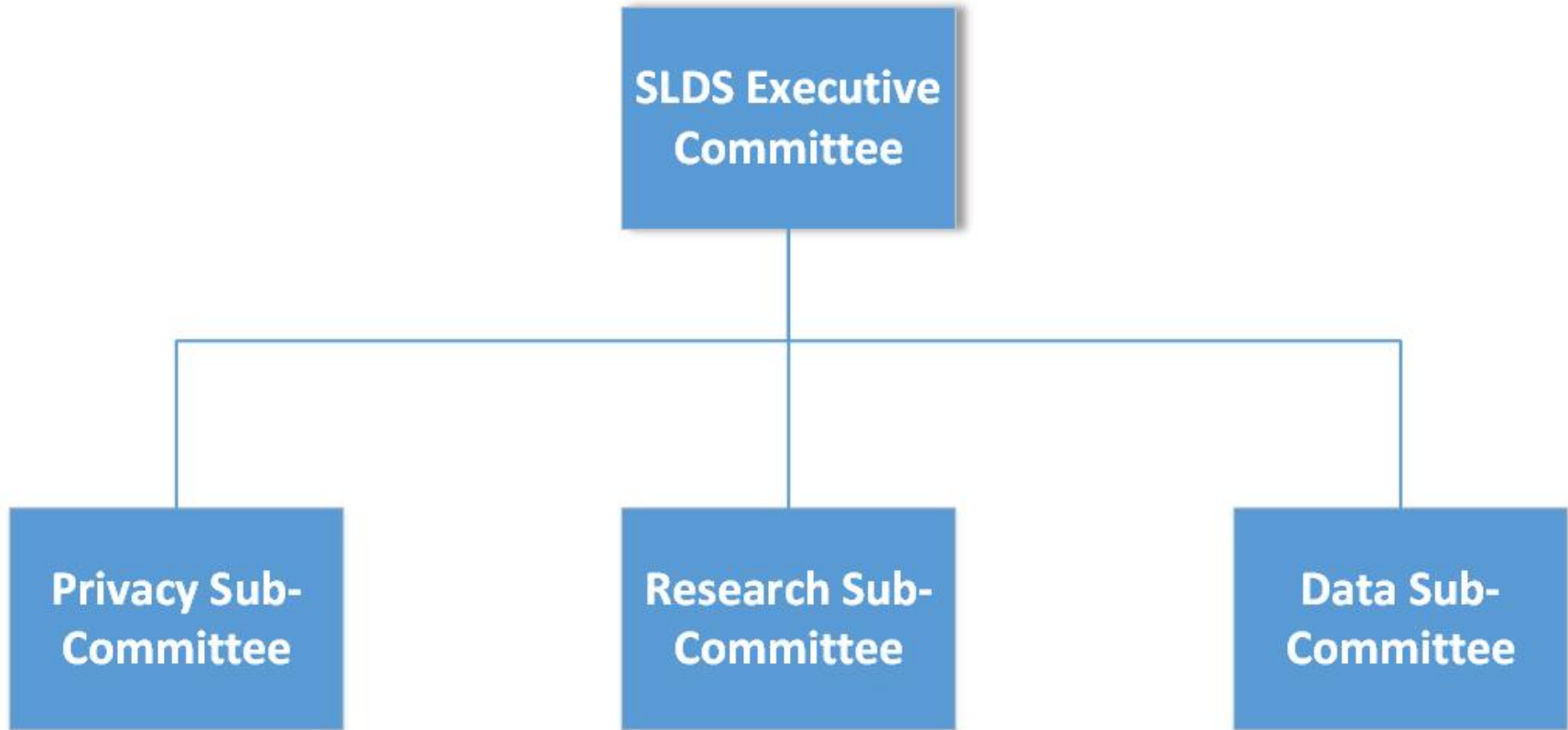
- Records are matched against each other, then de-identified
- Only de-identified data is stored within data warehouse

## Reporting Process

- Data will be reported at aggregate level with appropriate suppression rules applied
- Agencies will review all data reports prior to publication



# SLDS | Governance



# SLDS | Governance

## Executive Committee

- Consists of data partner agency directors (ODE, HECC and Employment) and representation from OSCIO
- Set immediate and future goals for the system and the research conducted with the tool
- Reviews and approves all policies, major processes and project engagements

## Subcommittees

- Research, Data and Privacy
- Consist of subject matter experts from partner agencies and key external stakeholders
- Develop relevant operational processes
- Make operational decisions and recommendations to Executive Committee on research requests, data sharing requests and access to the system

# SLDS | Executive Committee Vision

## **Ben Cannon**

Executive Director, Higher Education Coordinating Commission

## **Colt Gill**

Director, Oregon Department of Education

## **Graham Slater**

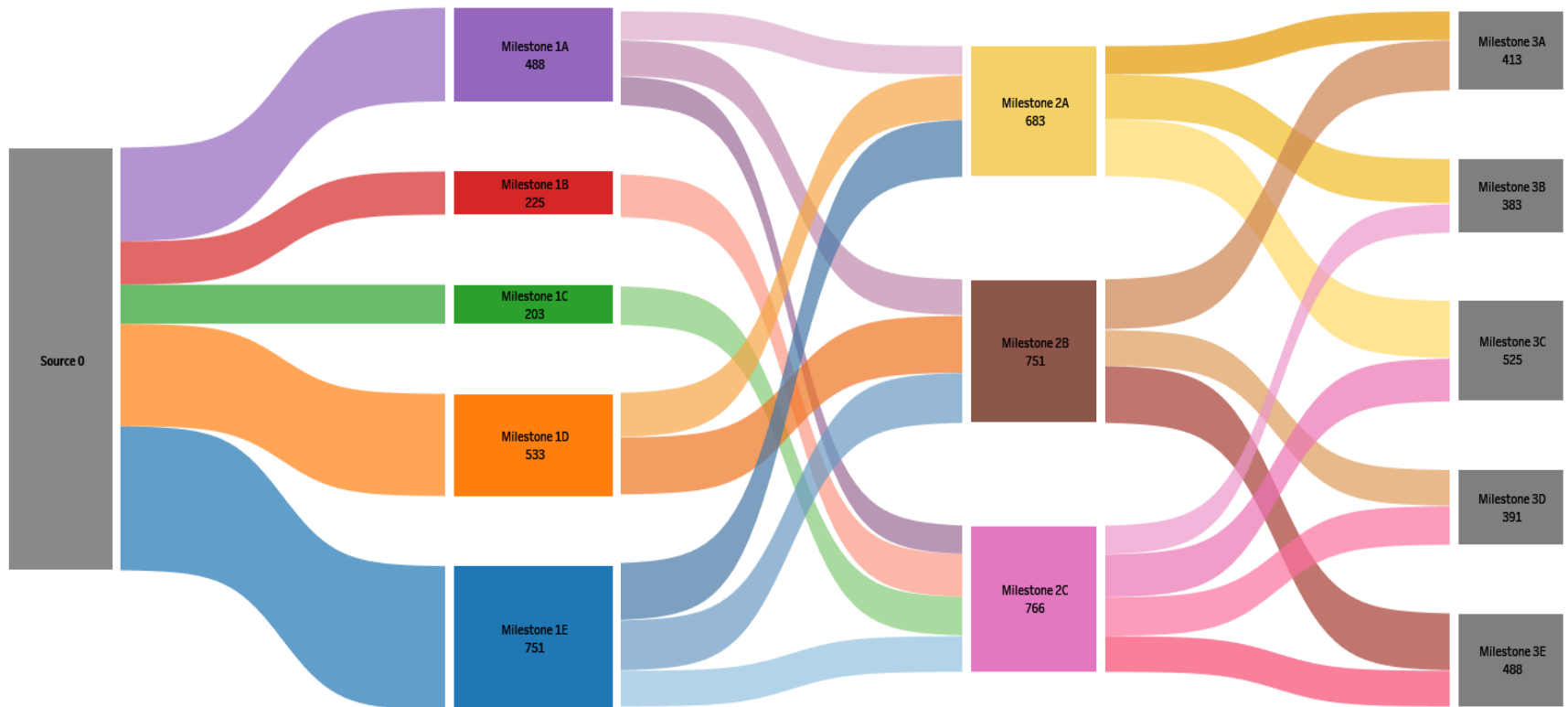
Deputy Director, Oregon Employment Department

# SLDS | Cross-Sector Research Agenda

- Pilot study of higher education and workforce outcomes of students who have dropped out and been re-engaged
- Agency Research Directors finalizing research agenda and data reports produced by system
- List of Data Reports and Research Agenda to be published on Statewide Longitudinal Data System website

# SLDS | Sample Data Reports

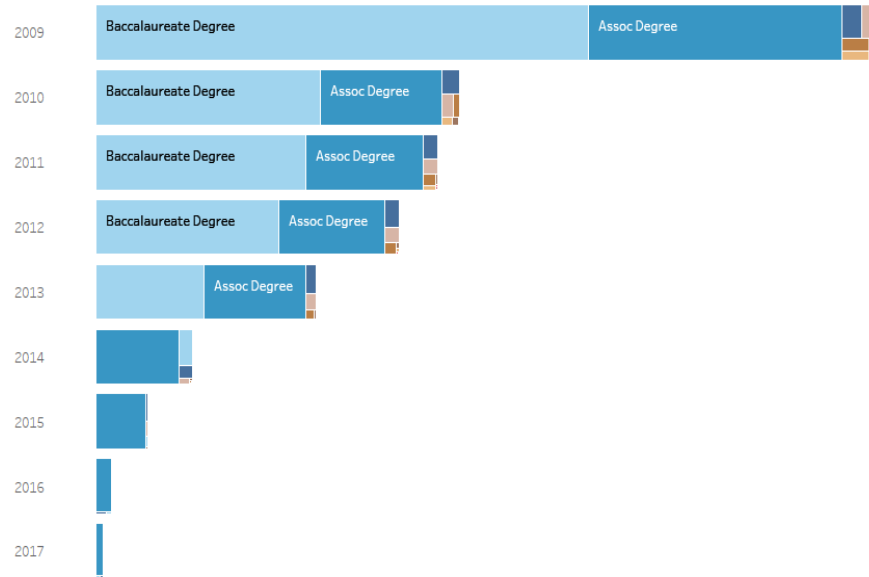
## Sankey



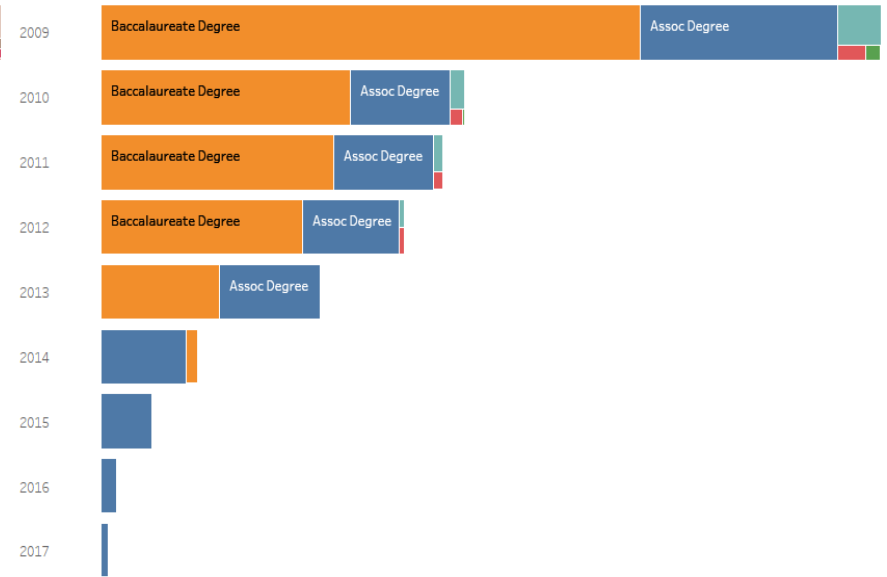
# SLDS | Sample Data Reports

How Do Students Progress from High School Graduation to Occupation?

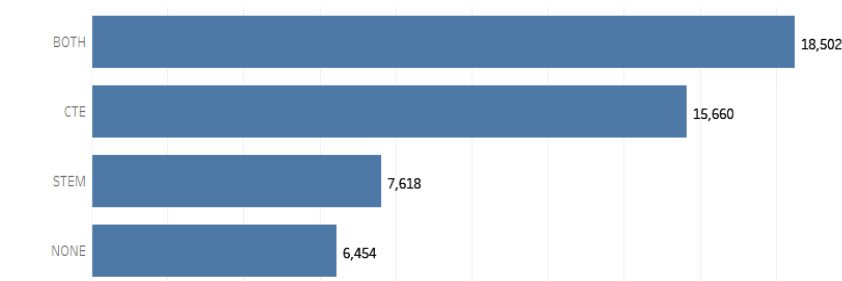
Initial Degree by High School Graduation Year



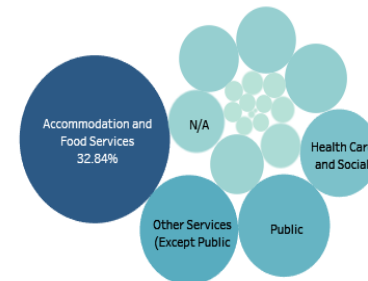
Highest Degree by High School Graduation Year



Students by Program



Industry Breakout



# SLDS | Research Directors

## **Amy Cox**

Director of Research and Data, Higher Education Coordinating Commission

## **Brian Reeder**

Assistant Superintendent of Research and Data, Oregon Department of Education

## **Robert Uhlenkott**

Director of Workforce and Economic Research, Oregon Employment Department

# SLDS | Education Stakeholder

## **Dr. Ella Taylor**

Chief Research Officer, Willamette Education Service District

## **Rachel Wente-Cheney**

Chief Information Officer, High Desert Education Service District

## **Whitney Grubbs**

Executive Director, Chalkboard Project



# SLDS | Budget Request

## Governor's Recommended Budget

Total Budget Request - \$4.4 million (Personnel/S&S)

Total FTE – 10.0

FTE	Title	Duties
1.0	Help Desk	Provide direct support to agencies and stakeholders utilizing the system and provide operational support of the system.
1.0	Research Analyst	Provide additional research capacity to utilize the system to identify longitudinal trends and data reports.
1.0	Communications/Policy Support	Support the system and the use of longitudinal data by identifying policy impacts, working with stakeholders to identify needs, and develop needed training and outreach materials.

## For questions and further information

**Ben Tate**

Statewide Longitudinal Data System Director

[ben.tate@state.or.us](mailto:ben.tate@state.or.us)