
Oregon Health Authority Central Services, and State Assessments & Enterprise-Wide Costs

Presented to
Joint Committee on Ways and Means
Subcommittee on Human Services
March 25, 2019

Patrick Allen, Oregon Health Authority Director



What Central Services Does

Proposed Budget

State Assessments and
Enterprise-Wide Costs

OHA Wrap-Up

Central Services Purpose and Functions

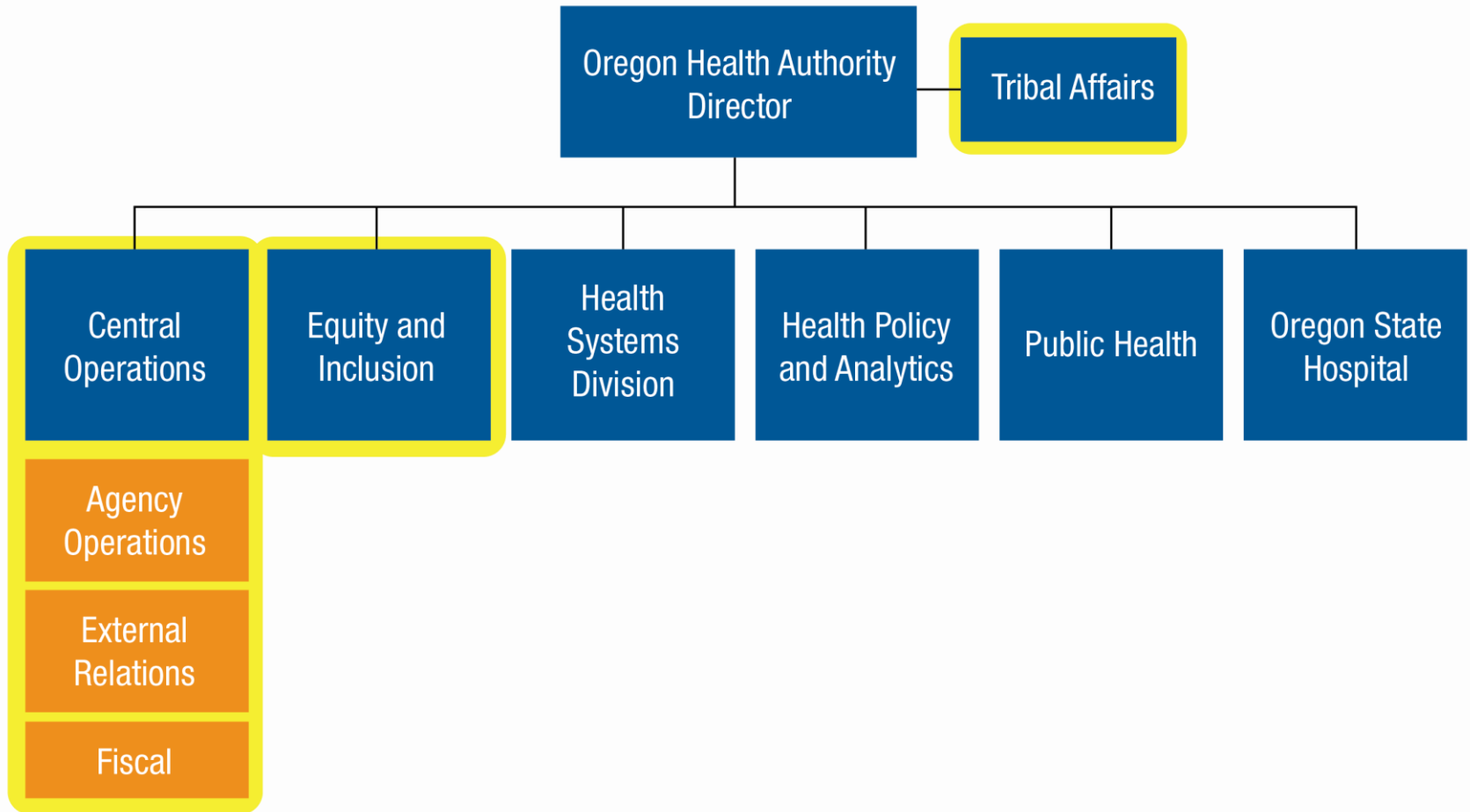
Purpose:

- Provide agency-wide support to help the Oregon Health Authority achieve its goals and mission

Key functions:

- Human resources
- Finance and budget
- Central operations
- Equity and inclusion
- External relations
- Tribal affairs

Central Services Organizational Chart



Agency Operations Division

- Human resources – 4,400 FTE
 - Recruitment
 - Employee Relations
 - Classification and Compensation
- Develop and maintain OHA's performance management system
 - Support Quarterly Performance Reviews
 - Coordinate change management activities
 - Engage in continuous process improvement
- Centralized public records management
- Office of Information Services (part of Shared Services presentation)

Supervisory Ratio, Span of Control

- Span of Control Ratio, December 2017 – 1:11
- Proposed Span of Control Ratio – 1:8.60
- Factors applicable to OHA supervisory ratio:
 - Safety
 - Geographic location of work
 - Complexity of work
 - Size and hours of operation
 - Unique personnel needs
 - Financial scope and responsibility

External Relations Division

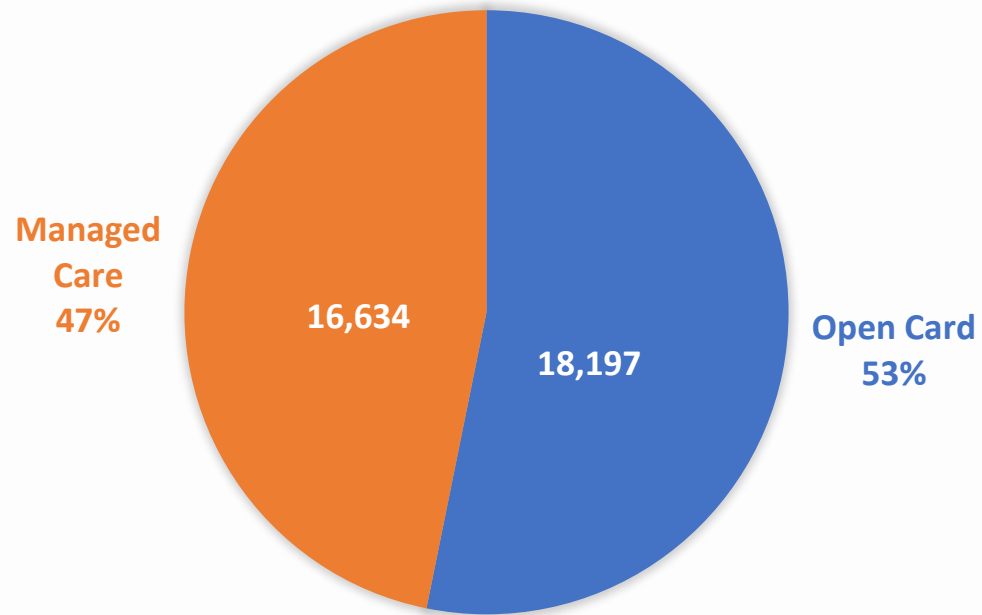
- Connecting Oregonians to OHA's services, programs, and mission
- **NEW:** Member and Stakeholder Support Unit
 - Ombuds Program expansion
 - 200+ cases per month on average
 - Community Partner Outreach Program
 - 381 community partner organizations
 - Mission: Engage communities across Oregon to advance an equitable, responsive health system
 - Innovator Agents

Tribal Affairs

OHA respects the government-to-government relationship between the state and the Nine Federally Recognized Tribes of Oregon

OHA Tribal Affairs works regularly with Oregon Tribes, the Urban Indian Health Program, and the Indian Health Service to improve health outcomes of American Indians and Alaska Natives in Oregon

AI/AN OHP ENROLLMENT: 34,831

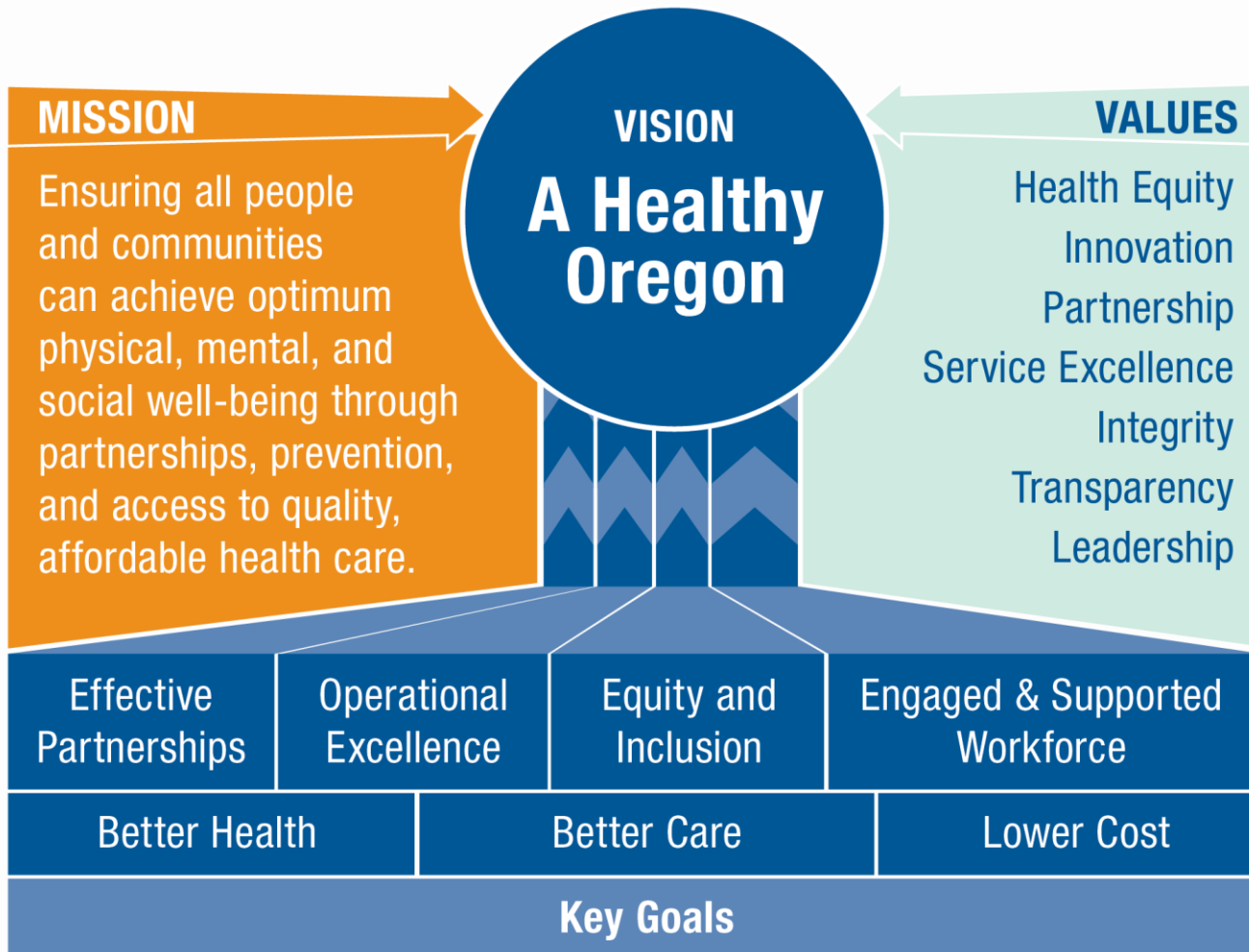


Tribal Affairs

OHA supports Tribal Health Programs by providing funding and other resources for improving programs and services to best meet their needs. Current priorities include:

- Strengthening the government to government relationship through implementation of the new Tribal Consultation and Urban Indian Health Confer Policy
- Improved care coordination and access to care with the development of the Savings and Reinvestment Program for care coordinated through tribal clinics with outside providers
- Addressing behavioral health needs with the creation of a Tribal Behavioral Health Strategic Plan, Tribal Mental Health Investments, and funding to address the opioid epidemic

Equity and Inclusion Division



Equity and Inclusion Division

Key functions:

- Addressing social inequities/health disparities
- Providing equity leadership across OHA
- Advancing workforce diversity and inclusion

Equity and Inclusion Division

Policy and programs **throughout Oregon**

- Regional Health Equity Coalitions
- Traditional Health Workers (LC 382/HB 2040)
- Health Care Interpreters
- Cultural Competence Continuing Education
- Non-discrimination and ADA compliance for the public
- Developing Equity Leadership Through Training and Action (DELTA)
- Race, Ethnicity, Language and Disability Demographic (REAL D) Data Collection
- Compliance with ACA Section 1557 and Language Access
- Community Engagement

Equity and Inclusion Division

Policy and programs **within OHA**

- Non-discrimination compliance in the workforce
- Equity and Inclusion at the Oregon State Hospital
- Technical assistance, training coordination, and consultation
- Workforce diversity and Affirmative Action
- Policy development, and legislative concept and bill review

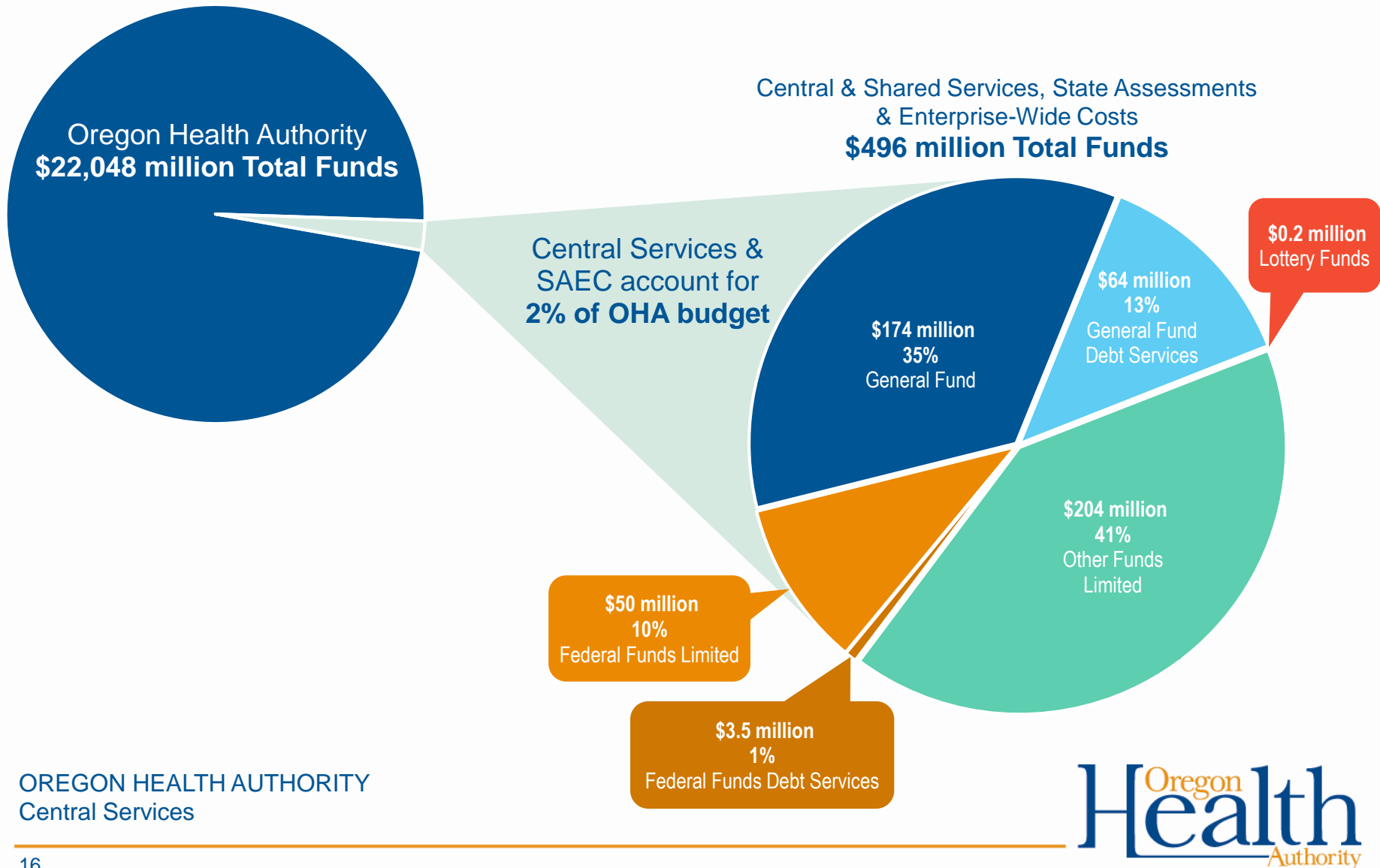
Fiscal Division

Key functions:

- Provide oversight for financial responsibility and sustainability with Coordinated Care Organizations
 - CCO transparency bill
- Ensure solvency and sustainability in deploying financial resources and operations
- Develop, coordinate, execute, and manage OHA budgets within divisions and across the agency
- Perform external audits of Medicaid providers and CCOs to assure proper implementation of federal and state regulations

What Central Services Does **Proposed Budget** State Assessments and Enterprise-Wide Costs

2019-21 Governor's Budget



What Central Services Does Proposed Budget

State Assessments and Enterprise-Wide Costs

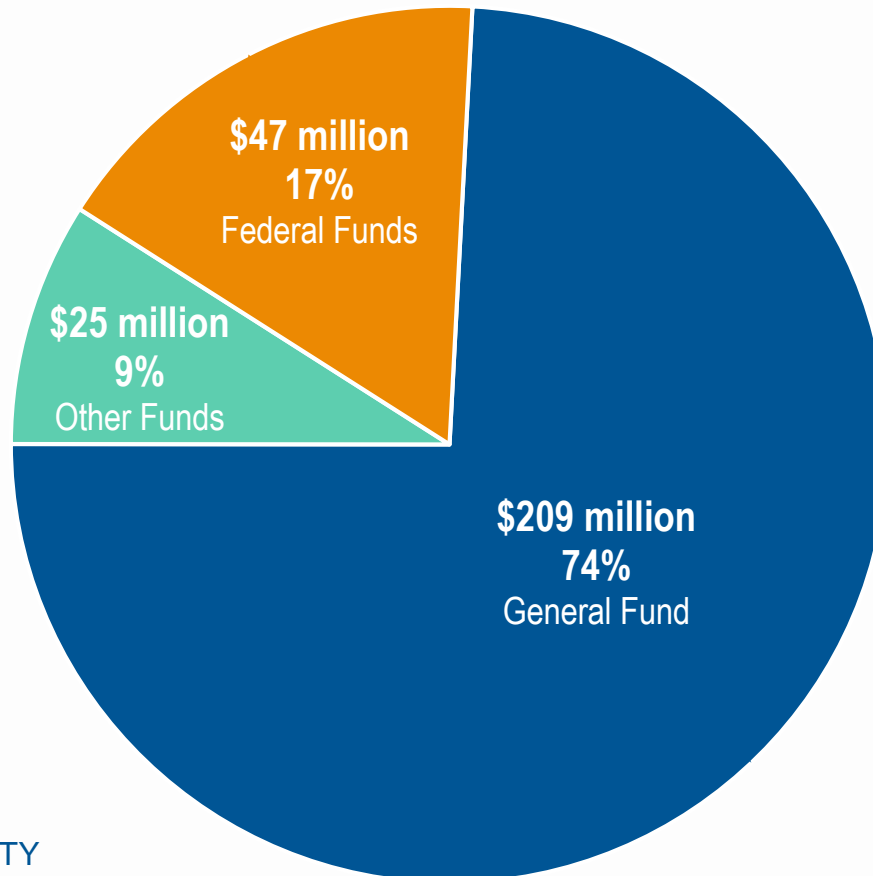
State Assessments and Enterprise-Wide Costs (SAEC)

SAEC budget covers costs for state government assessments and charges, and costs affecting the entire agency, including:

- State government service charges (based on DAS price list and estimated usage for fee-for-service items)
- Risk assessment
- Enterprise technology services
- IT Expendable/Break fix
- Facilities (e.g., rent, taxes, fuels, utilities, maintenance, leasing fees)
- Mass transit taxes
- Benefits for unemployment
- Debt service
- Funding for Shared Services Offices
- Oregon Administrative Hearings

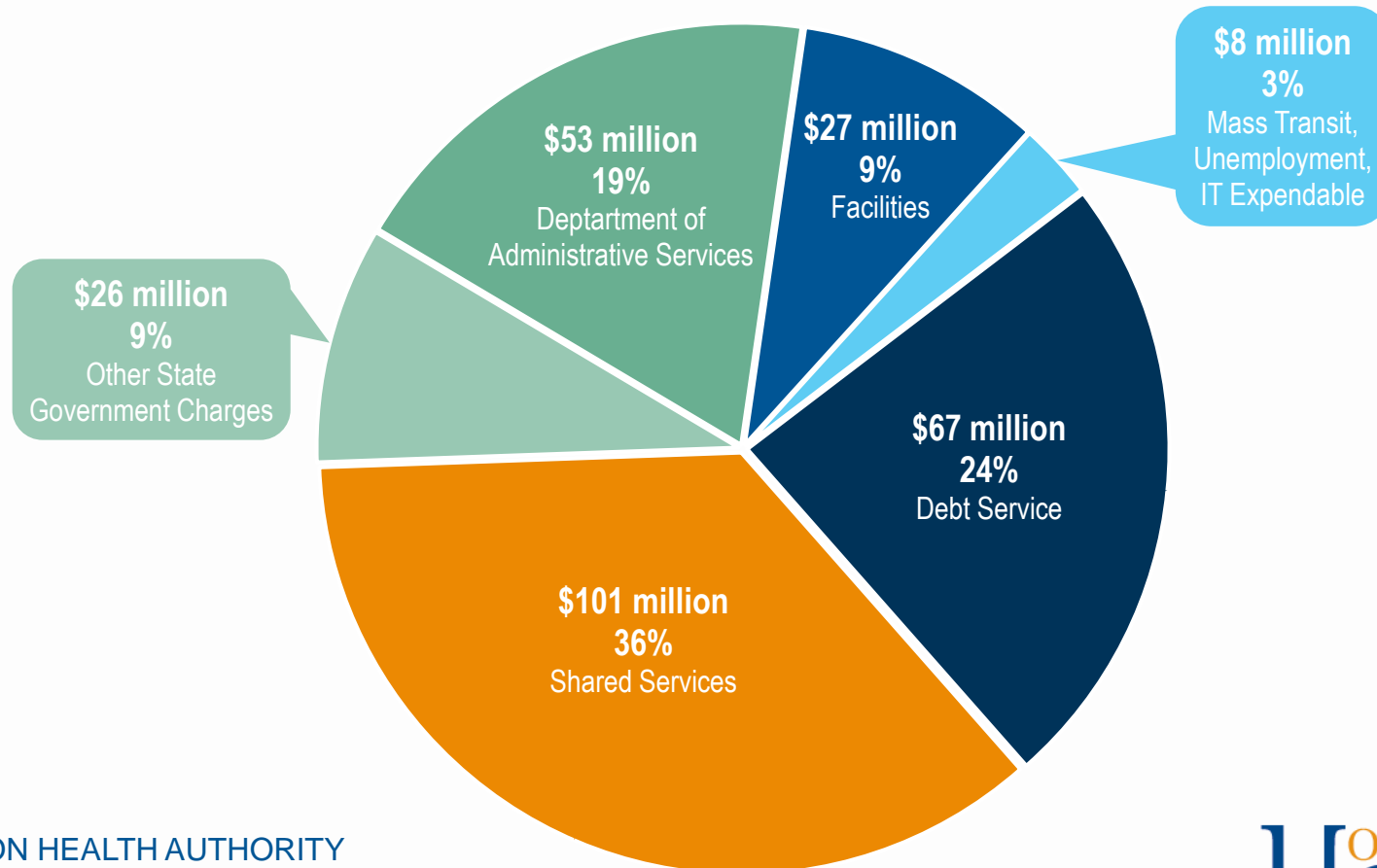
2019-21 Governor's Budget by Fund

Oregon Health Authority
State Assessments and Enterprise-Wide Costs
\$282 million Total Funds



2019-21 Governor's Budget by Activity

Oregon Health Authority
State Assessments and Enterprise-Wide Costs
\$282 million Total Funds



Thank You

Health
Oregon
Authority