
Oregon Health Authority Health Systems Division Behavioral Health

Presented to
Joint Committee on Ways and Means
Subcommittee on Human Services
March 11, 2019

Patrick Allen, Oregon Health Authority Director



Why HSD and Behavioral Health

What Behavioral Health Does

Strategies and Successes

Challenges

Proposed Budget

Behavioral Health in Oregon

Only **46%**
of adults
received mental
health treatment
last year

15.7%
Of teenagers
experienced a
major
depressive
episode in the
last year

Suicide is the
2nd leading
cause of death
for young adults
in Oregon

5.1% of
adults had
serious thoughts
of suicide last
year

Illicit drug use
among
teenagers is
0.9% higher
than national
average

Oregon ranks
18th
nationally in
opioid use
disorder

Binge drinking
among
teenagers is
0.6% higher
than national
average

33.0% of
teenagers
perceive no risk
from smoking a
pack of
cigarettes a day

Only **50%**
of adults in
Oregon who
received mental
health services
were satisfied
with services

7.5%
of Oregonians
over 12
experience
alcohol
dependence or
abuse

11% of
Oregonians
dependent on
illicit drugs
receive
treatment

Only **46%**
of youth who
had a major
depressive
episode receive
treatment

Oregon is
ranked **15th**
nationally in
suicide

Behavioral Health Where We Live, Work, and Learn



The Triple Aim Vision for Oregon

1 **Better health**

2 **Better care**

3 **Lower costs**

Why HSD and Behavioral Health

What Behavioral Health Does

Strategies and Successes

Challenges

Proposed Budget

Behavioral Health Vision

To provide access to behavioral health services in the **right place** at the **right time**

Elements of Behavioral Health Services

Prevention

- Screening
- Mental Health Promotion

Intervention

- Crisis services
- Early intervention
- Safety Net Services

Treatment

- Clinical
- Outpatient
- Inpatient
- Residential

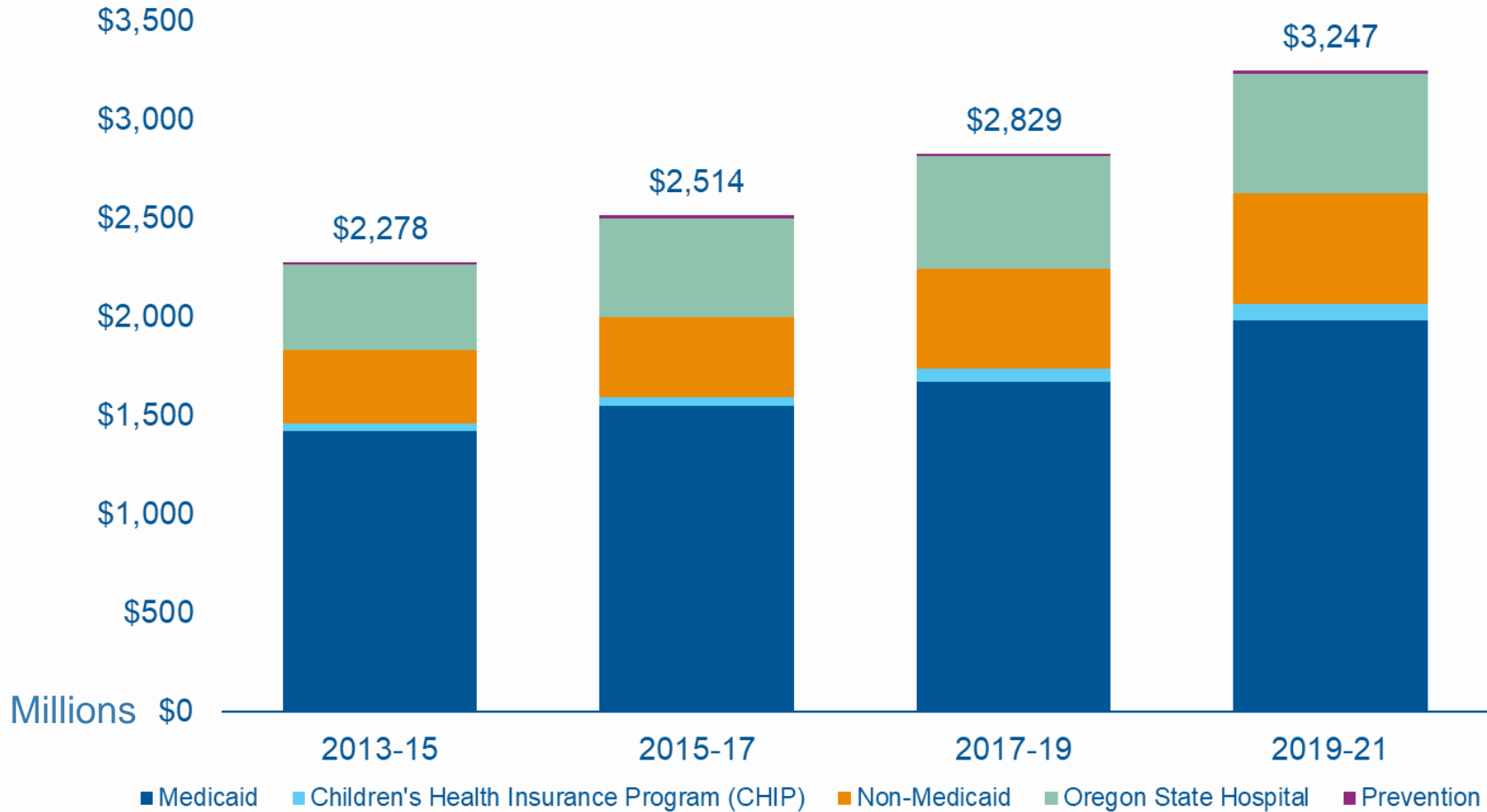
Case Management

- Referral
- Coordination

Maintenance and Recovery Supports

- Peer Services

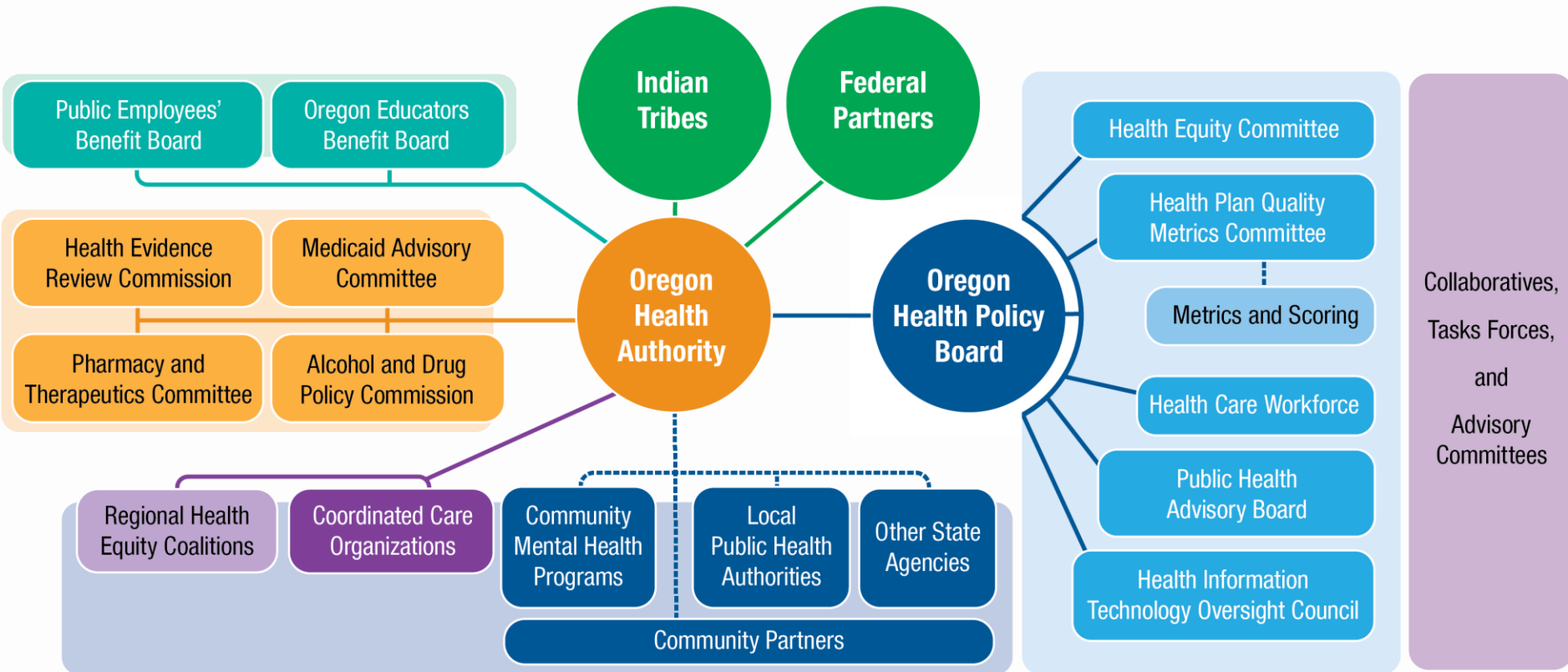
Historical OHA Behavioral Health Spending



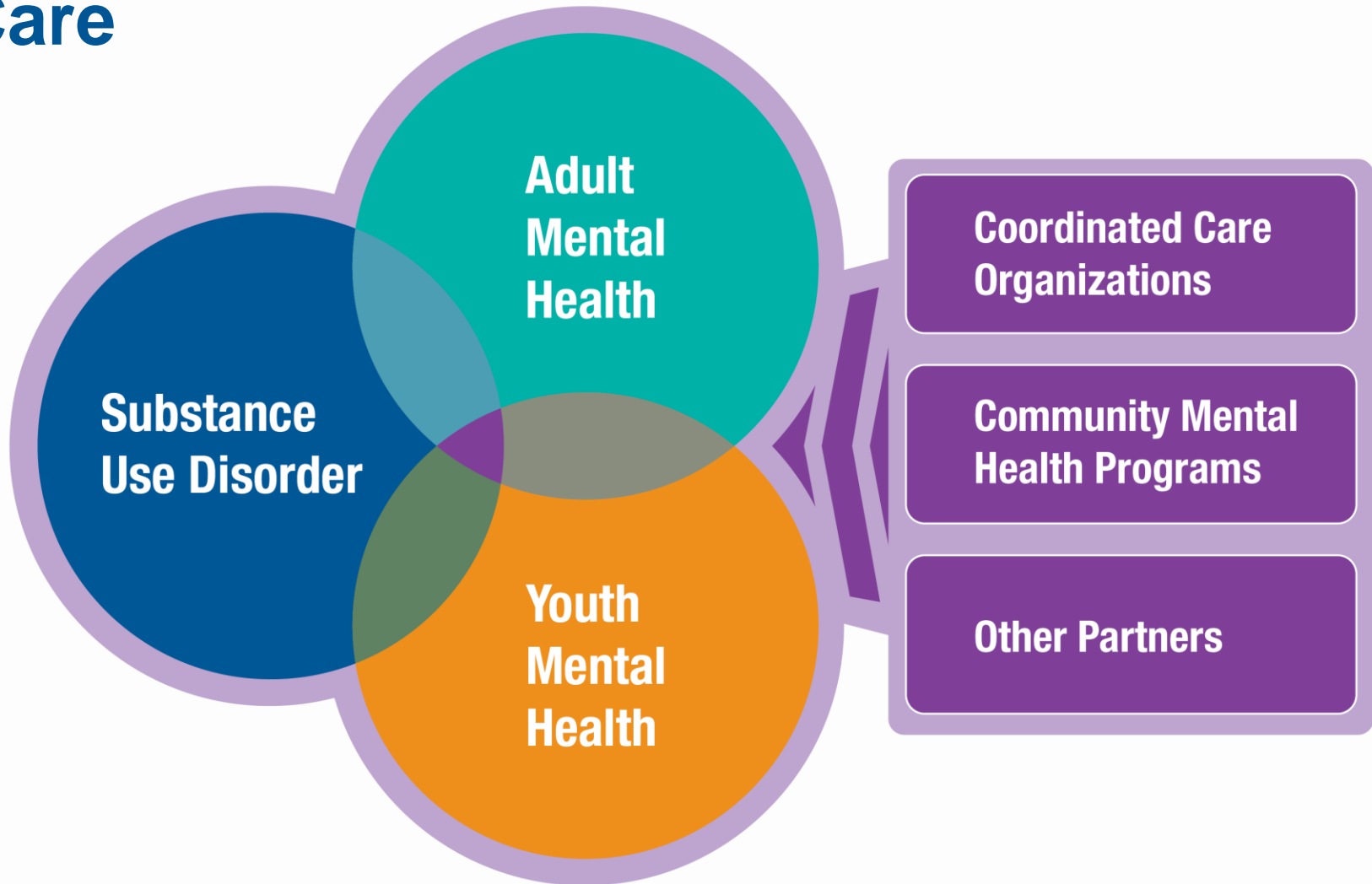
OREGON HEALTH AUTHORITY
Health Systems Division



Behavioral Health Partners



How HSD Behavioral Services Delivers Care



Why HSD and Behavioral Health

What Behavioral Health Does

Strategies and Successes

Challenges

Proposed Budget

Strategy: Strengthen Community Mental Health Services

- Oregonians with serious and persistent mental illness need access to services and supports to help them achieve and maintain stability in their own communities.
- We want to prevent crises and the need for hospitalizations whenever possible.

Success: Increased Availability of Services

Through increased services in the community:

- Mobile crisis services have increased 130%
- Supported housing has increased 134%
- Peer supported services have increased 75%
- Emergency department recidivism has reduced by 42%

Success: Permanent Supportive Housing

- Housing as a Social Determinant of Health
- Over 1600 individuals served statewide
- OHA provides rental assistance, housing support services, and barrier removal

Strategy: Expand Access to Evidence-Based Treatment

- Strategic investments to build substance use disorder treatment capacity and infrastructure in rural and underserved communities.

Success: Increased Capacity in Rural Oregon

- 200 more providers now qualify to provide MAT statewide
- Treatment access now in Oregon's most underserved areas (Douglas County and North Coast)
- 8 counties can now provide naloxone to reverse opioid overdoses (121 overdoses reversed so far)
- Beyond establishing a physical access point for treatment, these new programs are hubs for training and education for the whole community

Strategy: Supporting the Behavioral Health Priorities of Oregon's Tribes

- Provides funds to improve the tribal behavioral health system through:
 - Tribal Mental Health Investments
 - Mental health promotion and prevention
 - Crisis services
 - Jail diversion
 - Supportive housing
 - Peer supports
 - Care coordination
 - Addressing the Opioid Epidemic through prevention, treatment and recovery
 - SUD Outpatient Programs

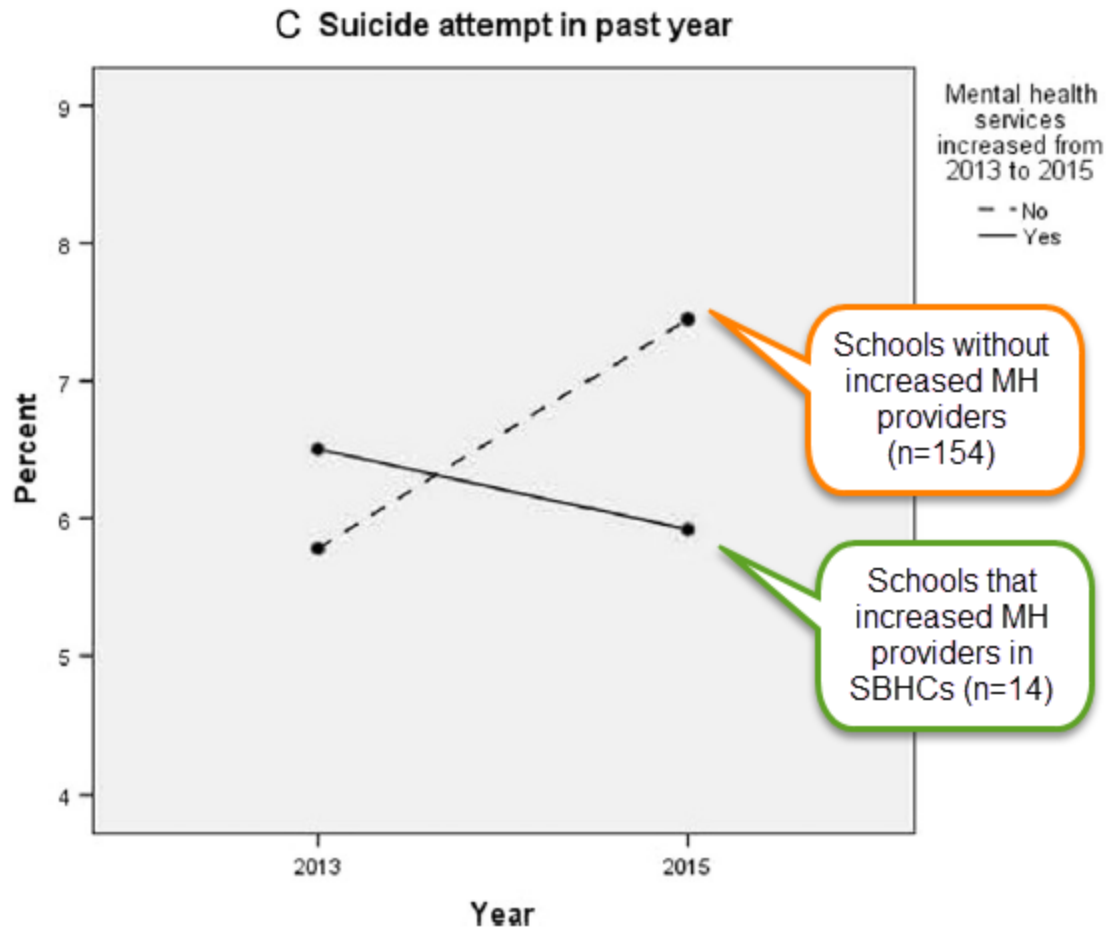
Success: Removing Barriers for Tribal Behavioral Health

- Tribal BH strategic plan is currently under development led by Oregon Tribes with support from the Urban Indian Health Program, Northwest Portland Area Indian Health Board, and OHA
- Carveout for Tribal Behavioral Health Programs based on the priorities set forth in the strategic plan.
- With this increased funding and flexibility the tribes can serve their members with culturally responsive care to best meet the individual and family needs.

Strategy: Support Children and Families

- Families need intergenerational support to facilitate healing, protective bonds between parent and child.

Success: Reduced Youth Suicide Attempts



Success: Parent Child Interaction Therapy

- PCIT is Evidence Based Treatment that teaches parents how to reduce negative behaviors in their children (ages 2-6), and reinforce positive ones, without resorting to maltreatment
- 36% reduction in disruptive behavior in school and home
- Reduced reports of child maltreatment in families who received PCIT

Success: Keeping Families Together Through Recovery



Why HSD and Behavioral Health

What Behavioral Health Does

Strategies and Successes

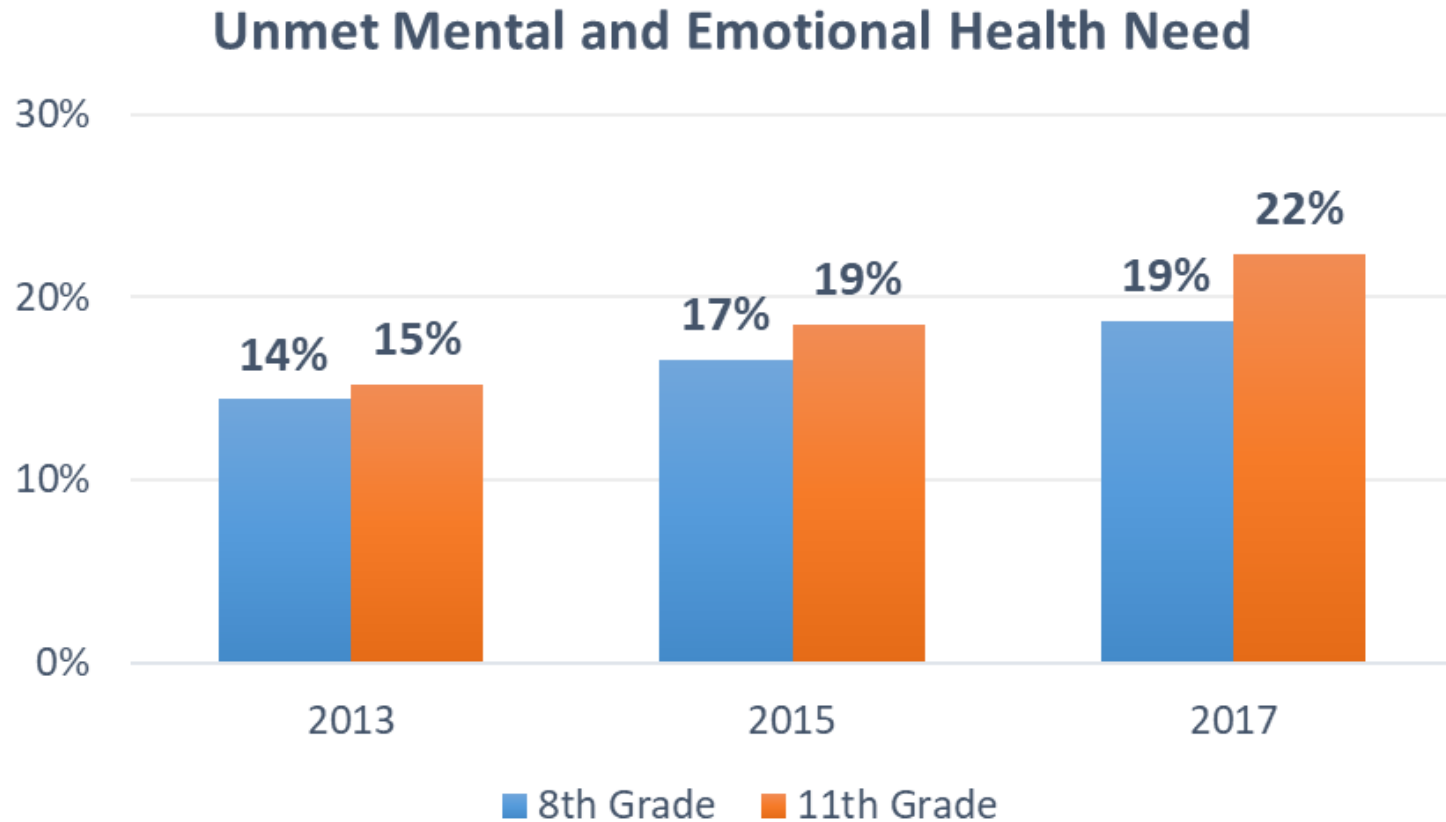
Challenges

Proposed Budget

Challenge: Urgency for Intensive Children's Services

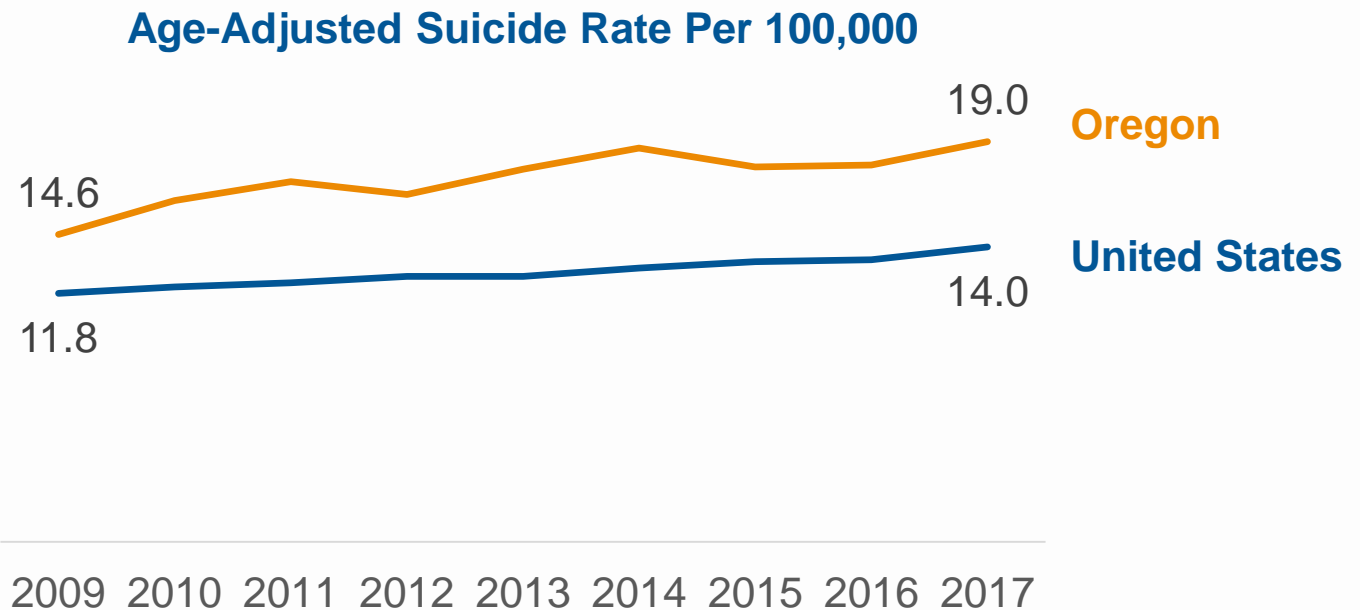
- Keeping children close to home with their families is critical
- Children with complex needs and their families need better access to community services
- Coordination challenges, often involving multiple state systems, can create unnecessary disruption and stress for children
- More residential care, more diversity in outpatient services, and more in-home crisis support are needed

Challenge: Unmet Mental Health Need in School Age Youth



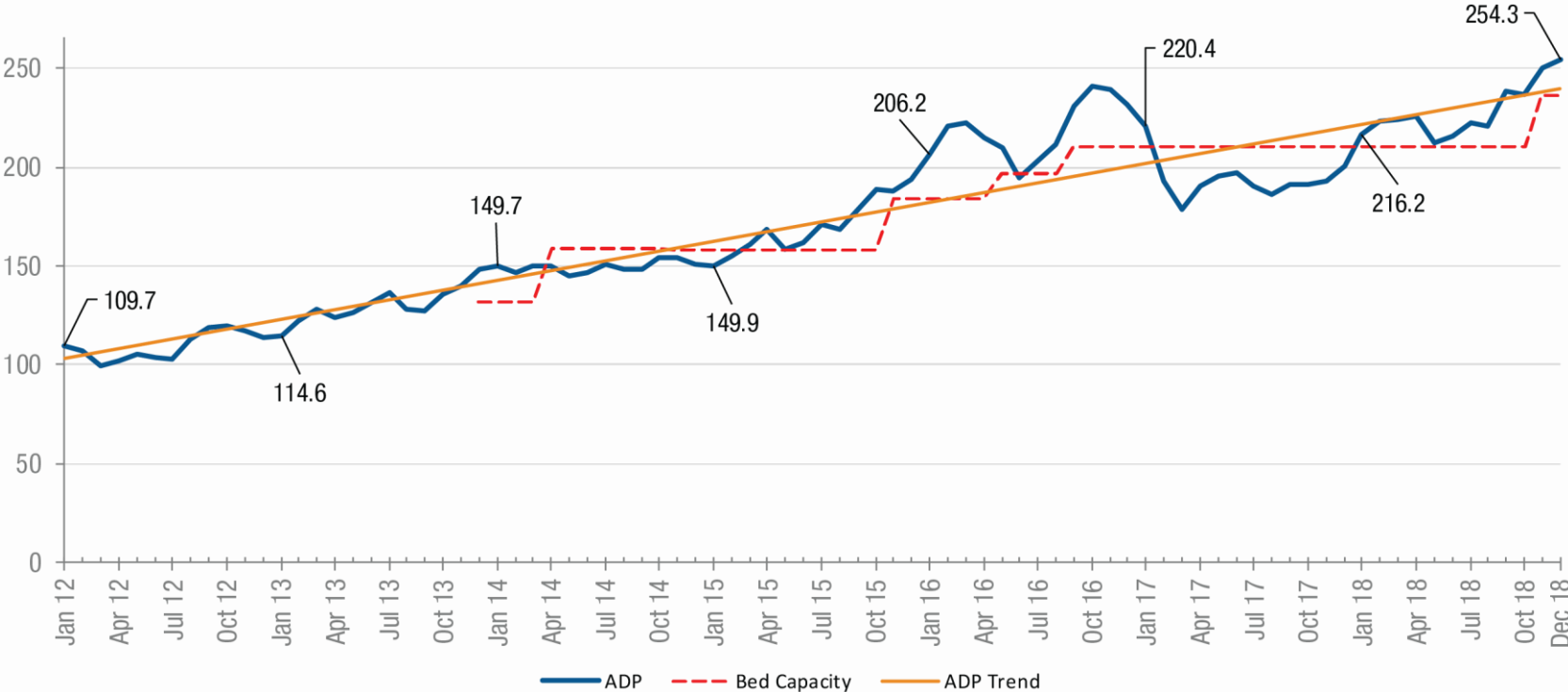
Source: 2013, 2015, 2017 Oregon Healthy Teens Survey

Challenge: Suicide Rate Above the National Rate



Challenge: Aid & Assist

OSH Aid and Assist (ORS 161.370) patient Average Daily Population (ADP) and Bed Capacity
 (Includes OSH-Salem, OSH-Portland, OSH-Junction City & BMRC)



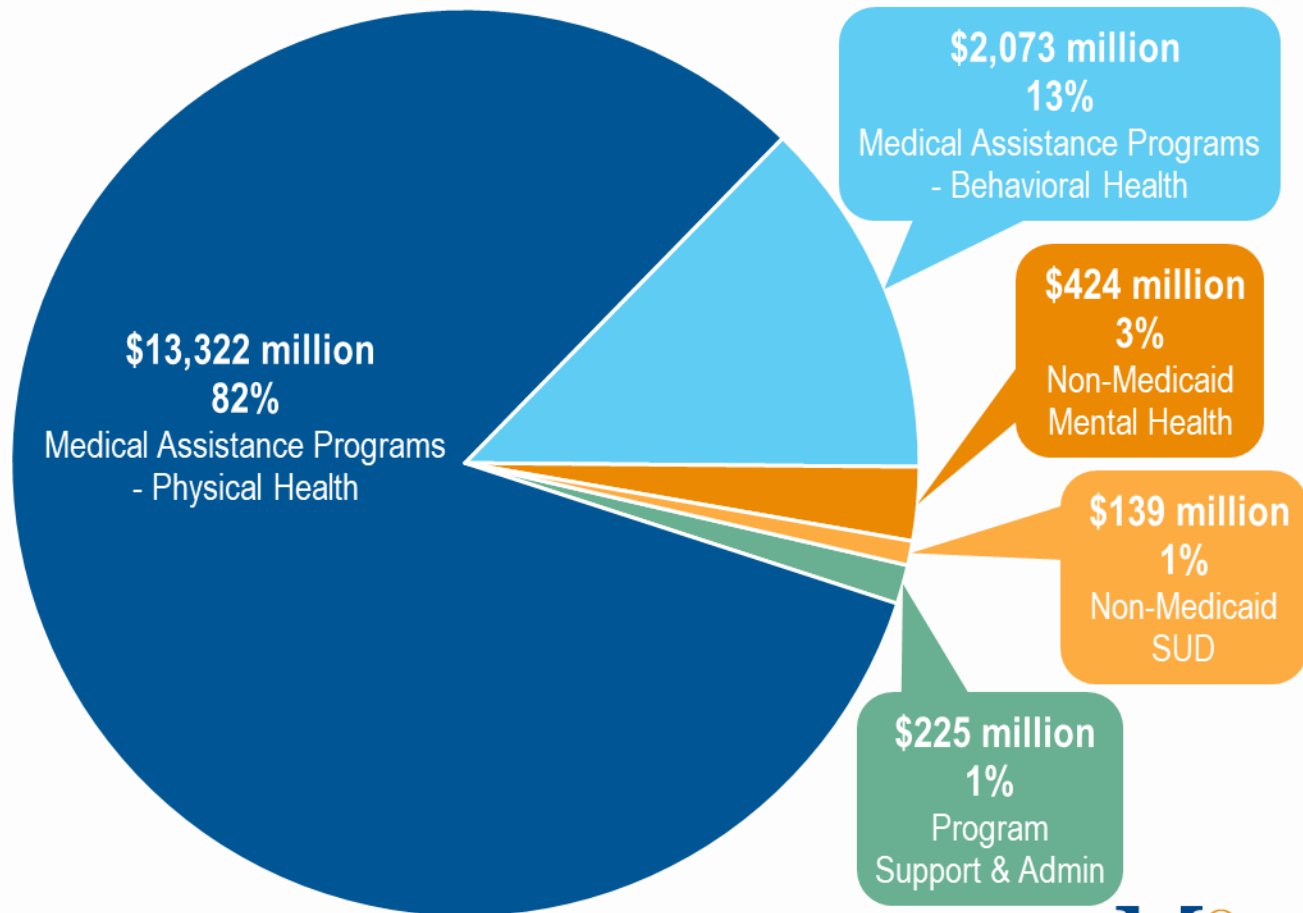
Challenge: Integration of Behavioral Health

- Integration of behavioral and physical health
- Expanding Evidence Based Mental Health treatments
- Connecting Behavioral Health providers

Why HSD and Behavioral Health
What Behavioral Health Does
Strategies And Successes
Challenges
Proposed Budget

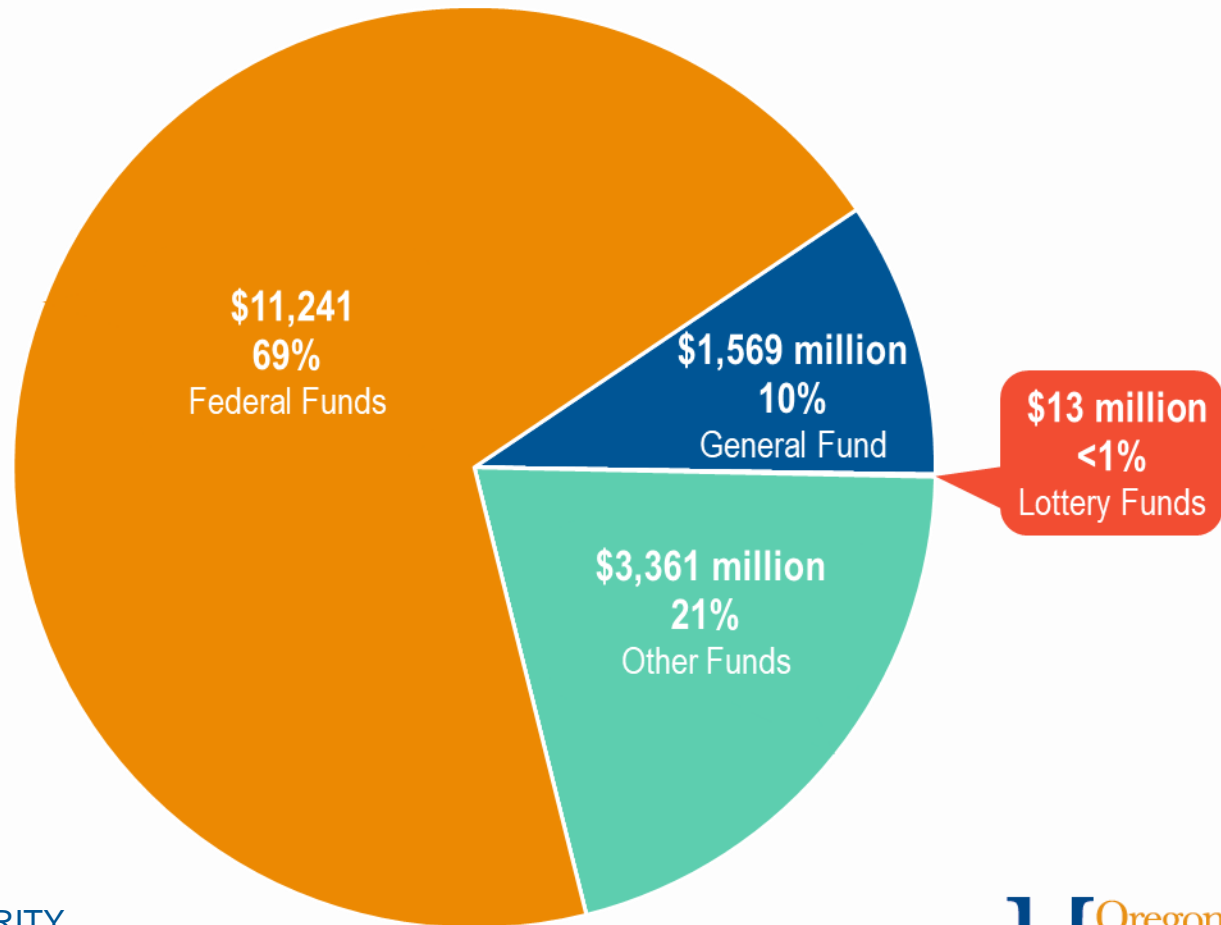
2019-21 Governor's Budget

Health Systems Division
\$16,183.2 million Total Funds



2019-21 Governor's Budget

Health Systems Division
\$16,183 million Total Funds



POP 403: Intensive In-Home Behavioral Health Services

- Creates and expands intensive community-based behavioral health care
 - Provides alternatives to residential services for Medicaid-eligible children and youth
 - Increases diversity of services
 - Treats more children at home and in their communities

	General Fund	Total Funds	Positions
POP 403	\$5.4 M	\$5.7 M	4

POP 402: Suicide Intervention and Prevention, and Mental Health in Schools

- Funds the 2016-2020 priorities outlined in Oregon’s Youth Suicide and Prevention Plan.
- It also funds development of an Adult Suicide Prevention and Postvention Plan.
- For youth, early intervention for adults and youth improves learning outcomes and saves lives
- Expands School-Based Mental Health services
 - Mental health consultation and treatment services

	General Fund	Total Funds	Positions
POP 402	\$13.1 M	\$13.1 M	3

POP 410: Treating Misdemeanor Defendants in the Community

- Funds community-based Aid and Assist treatment for defendants charged with only misdemeanors
- Expanded community-based treatment
 - Relieves Oregon State Hospital workloads by 40 percent
 - Aligns with US DOJ expectations for community-based treatment

	General Fund	Total Funds	Positions
POP 410	\$7.6 M	\$7.6 M	-

POP 411: Behavioral Health System Investments

- Technology Investments
- Behavioral Health Homes
- Mental Health Clinical Advisory Group continuation

	General Fund	Total Funds	Positions
POP 411	\$5.4 M	\$5.7 M	4

POP 414: Building a Modern Behavioral Health Information System

- Funds work to establish a modern, comprehensive behavioral health reporting system
- Improves data collection and collaboration among OHA programs, behavioral health providers and partners
- Improves caseload forecasting

	General Fund	Total Funds	Positions
POP 411	\$6.7 M	\$6.7 M	2

Health Services Division: Building a Person-Centered Delivery System

- Behavioral health and physical health need to be integrated to achieve the best outcomes
- HSD is structured to support and provide oversight to a person-centered, team-based care system

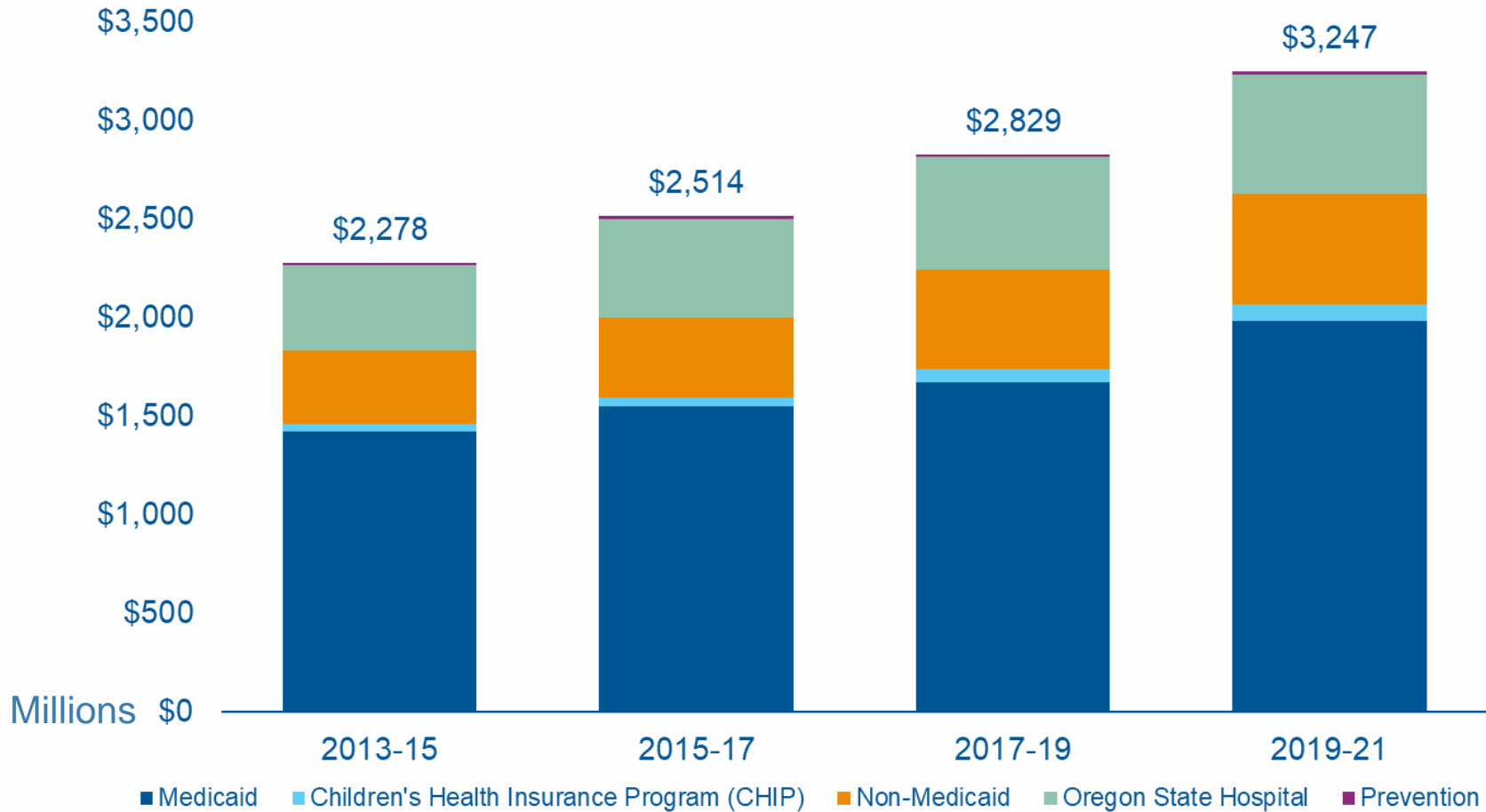
HSD Organization

Oregon Health Authority
Agency Director
Patrick Allen

Health Systems Division
Director
Margie Stanton



Historical OHA Behavioral Health Spending



OREGON HEALTH AUTHORITY
Health Systems Division



Thank You

Health
Oregon
Authority