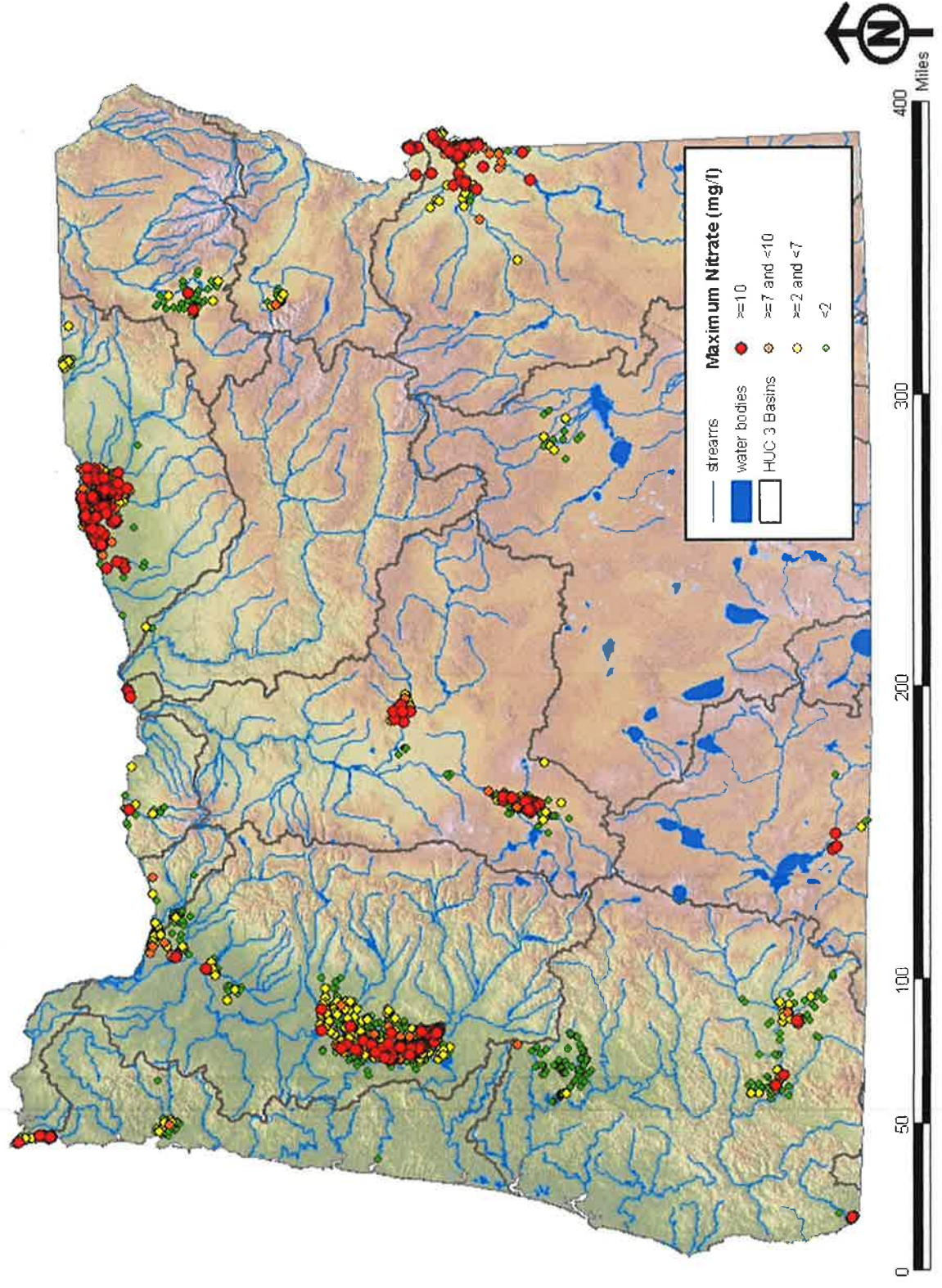
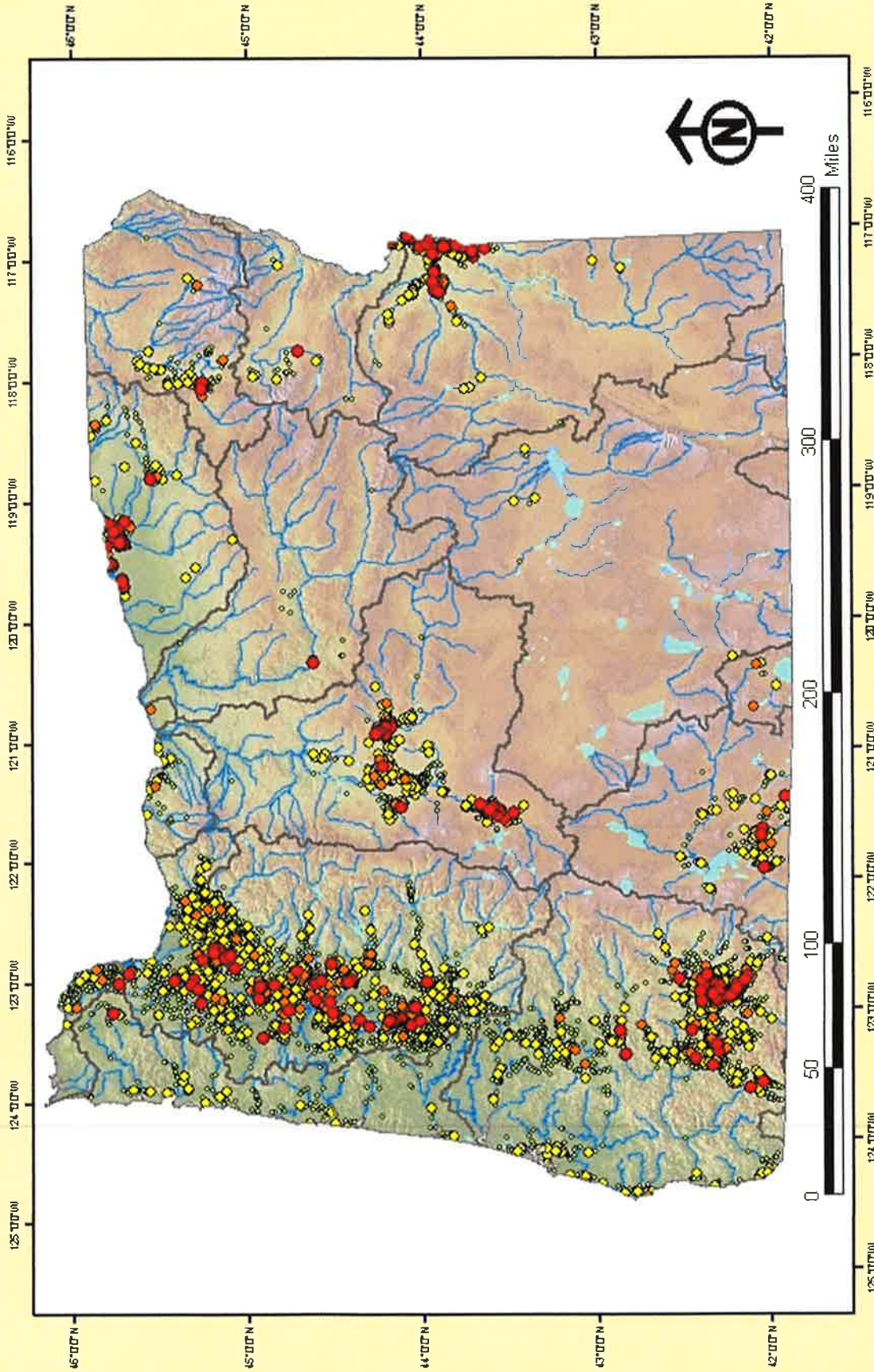


Maximum Nitrate Concentrations in Domestic Wells Monitored by ODEQ



Nitrate Data from the Real Estate Transaction Database



RET Nitrate	
— streams	
□ HUC 3 Basins	● > 10
■ water bodies	◆ > 7 And <= 10
	◇ > 2 And <= 7
	○ <= 2

This map shows sites where nitrate levels have been measured and recorded in the Real Estate Transaction Database (RET) managed by ODHS and the ODEQ DWBP as of 2005. There are a total of 16,449 records. In the RET database there are 13,712 reports of nitrate concentrations <2mg/l, 2,218 reports of concentrations between 2 and 7 mg/l, 298 reports of concentrations between 7 and 10 mg/l and 221 reports of concentrations >10 mg/l.

Maximum Arsenic Concentrations in Domestic Wells Monitored by ODEQ

