

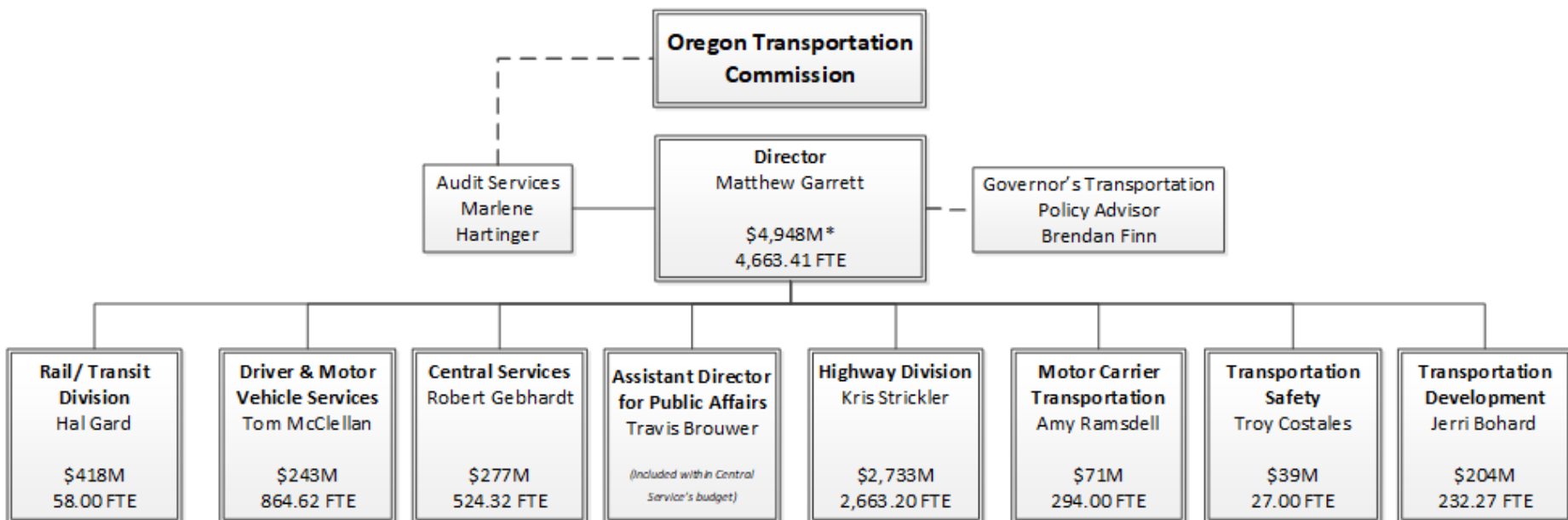


ODOT Program & Budget Overview

Oregon Department of Transportation

February 4, 2019

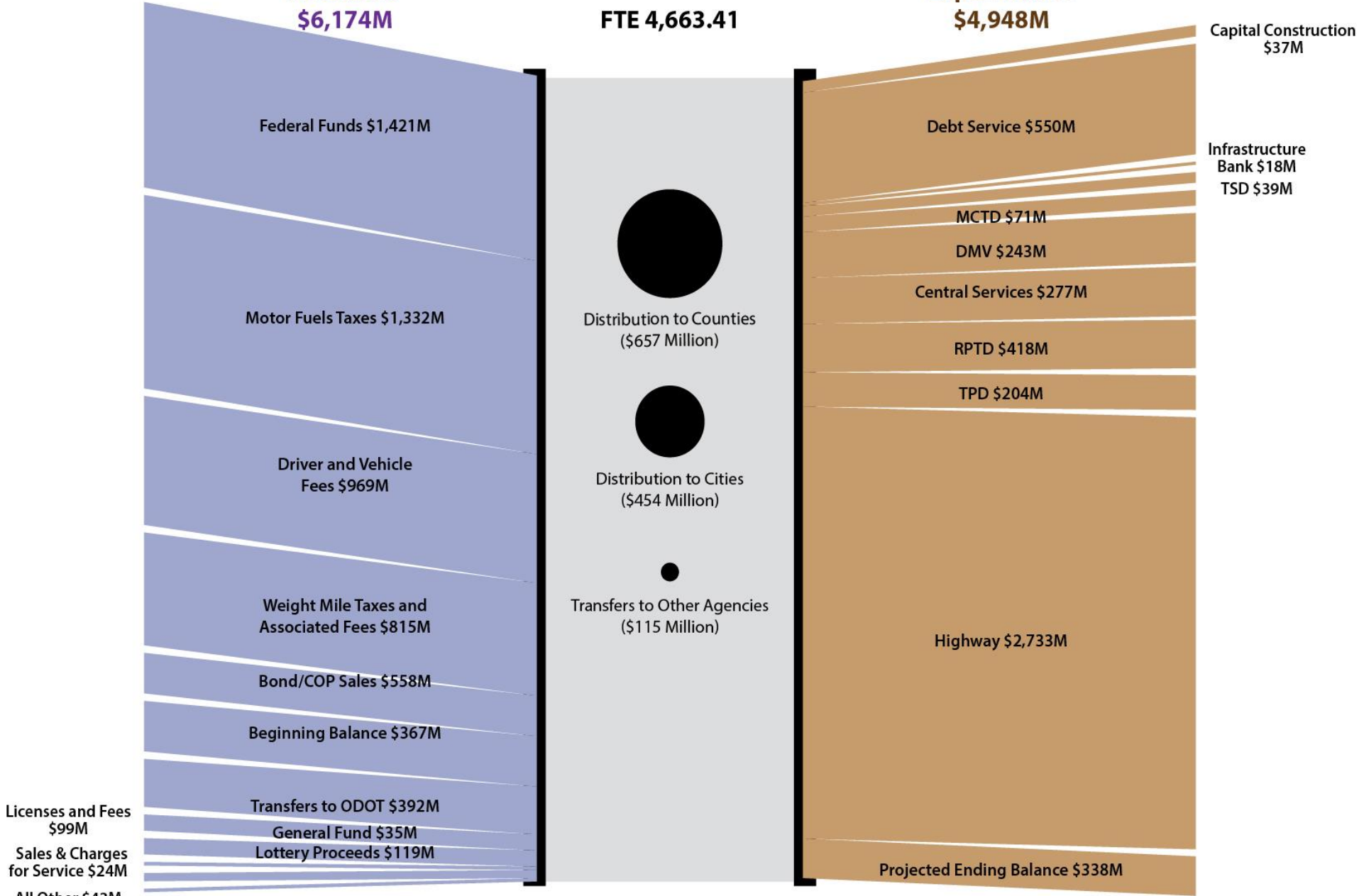


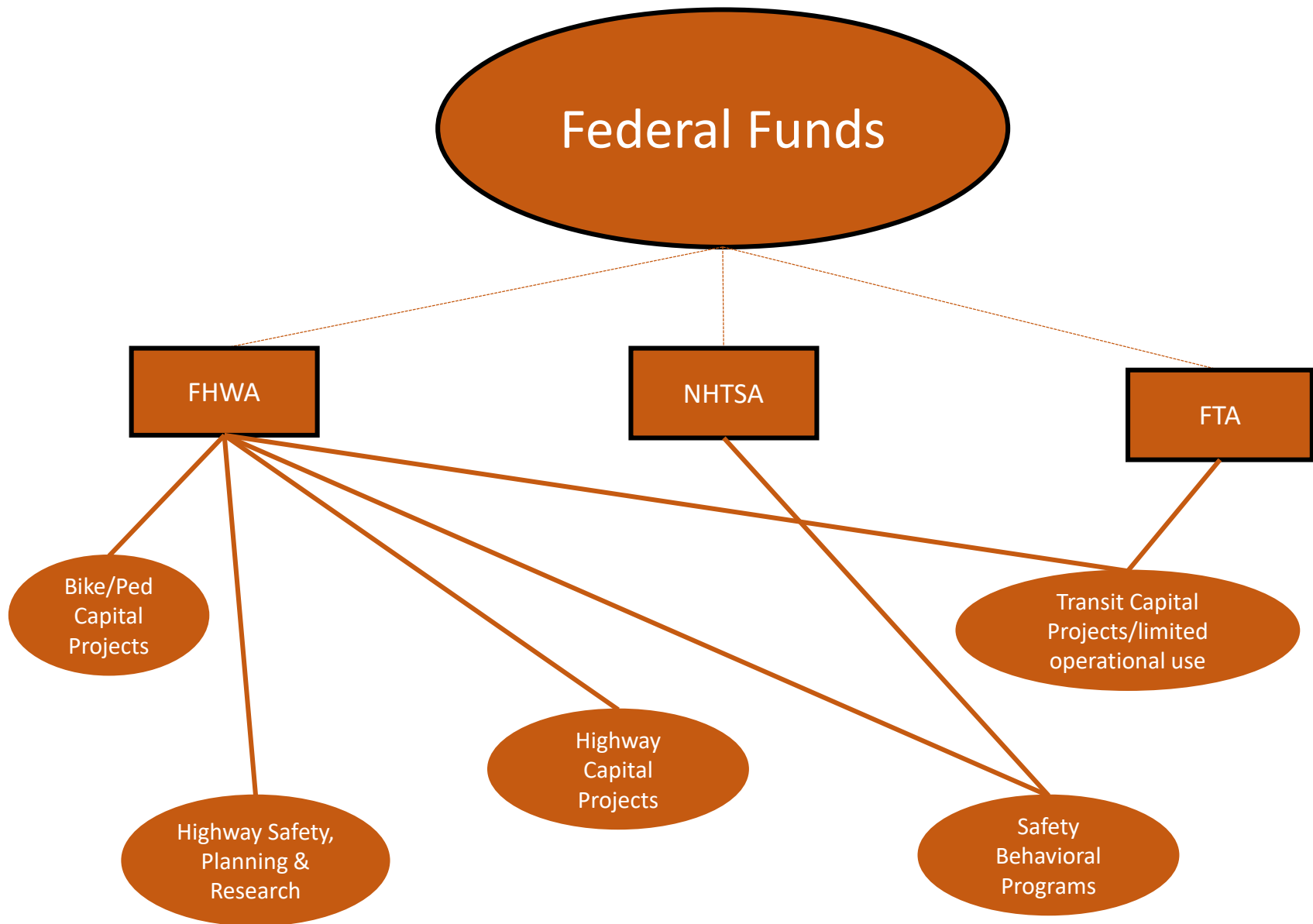


2019 - 2021 Biennium
FTE 4,663.41

Resources
\$6,174M

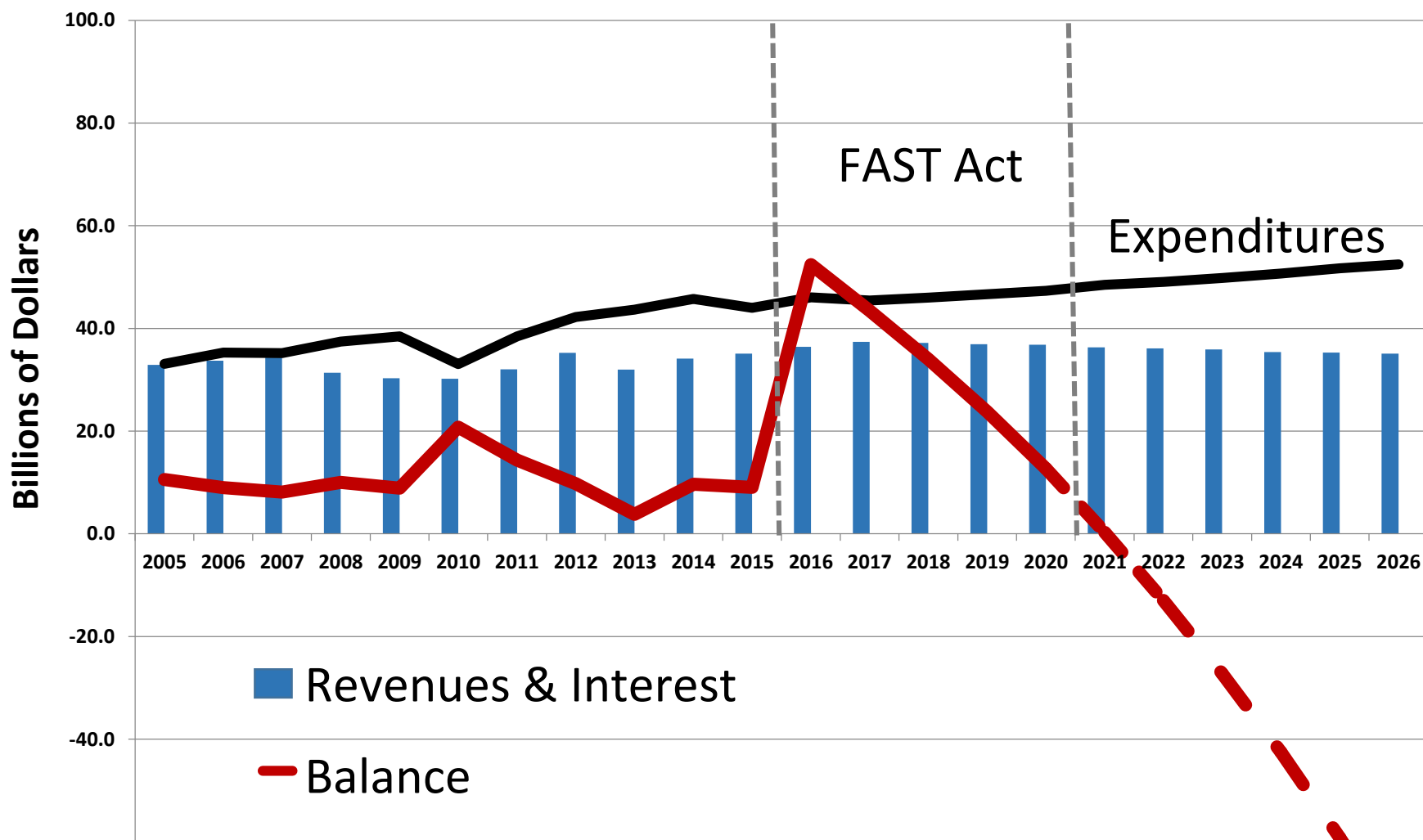
Expenditures
\$4,948M

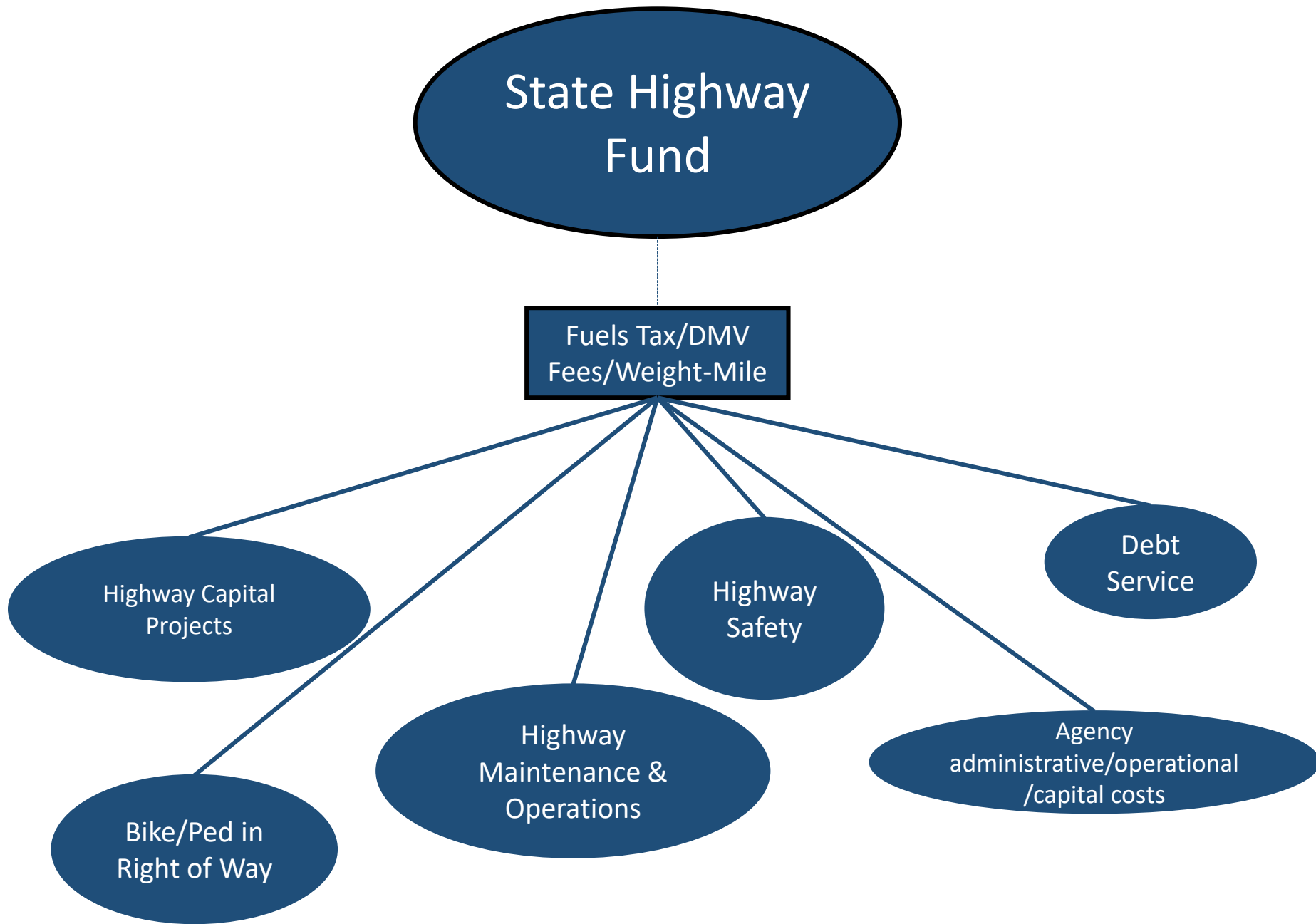




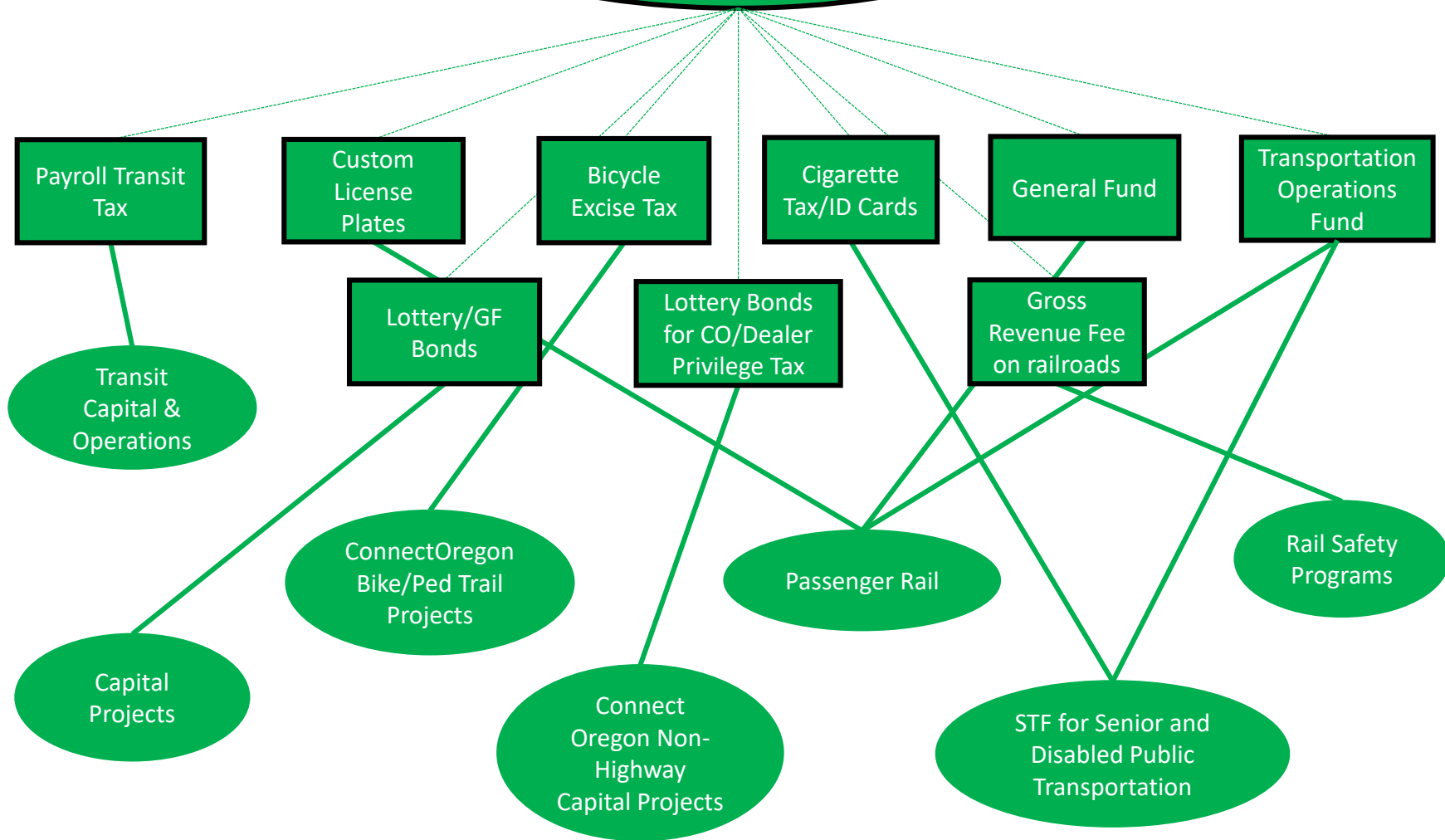
Federal funding is uncertain

Federal Highway Trust Fund: Highway Account Revenue, Expenditures and Balance





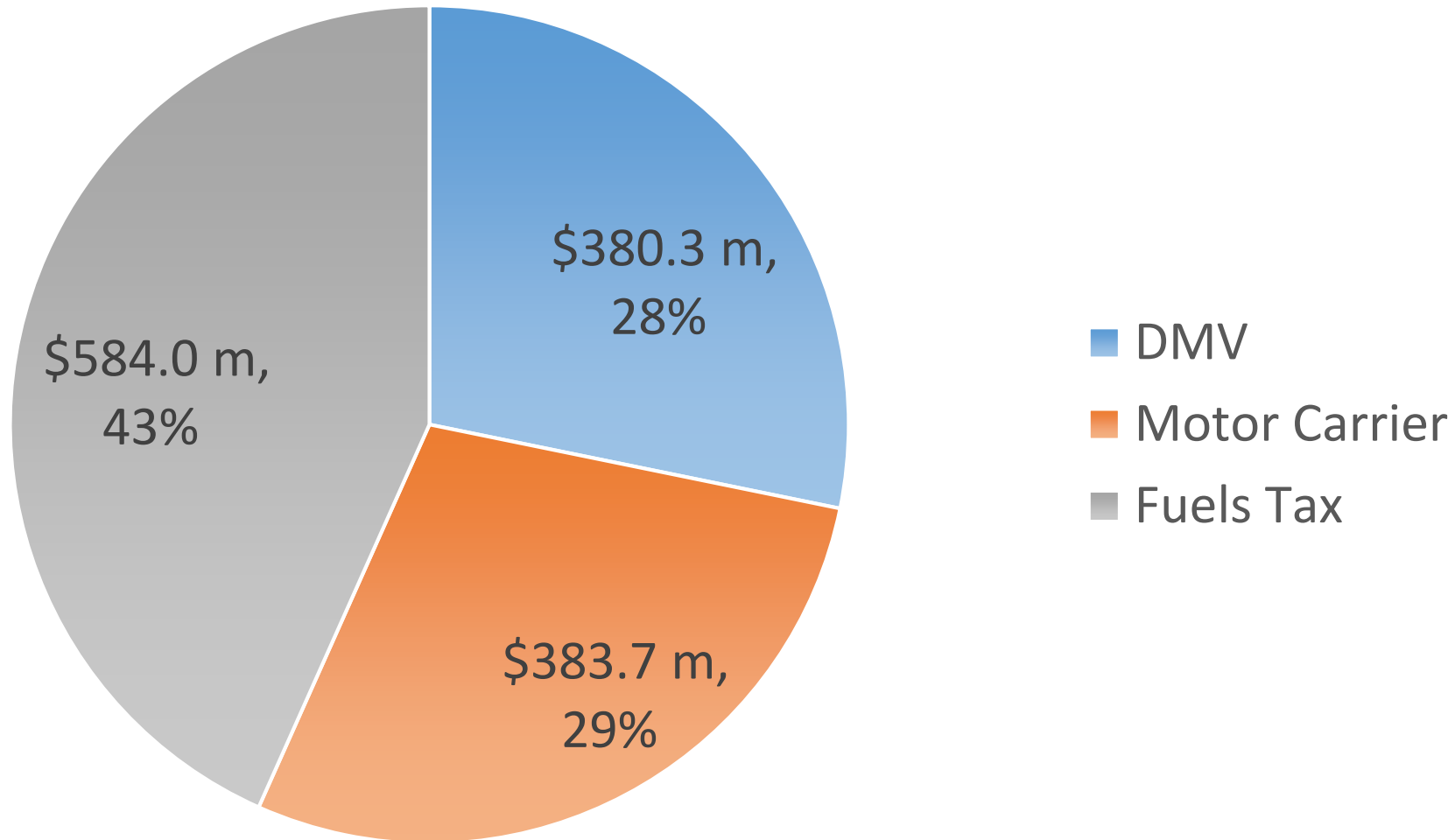
Miscellaneous-State



State Highway Fund Gross Revenue

In Millions of Dollars in State FY '18

Prior to administrative costs and transfers to other agencies



State Highway Fund for Local Governments

State FY 2017-2018 Apportionments

Counties

30% of State Highway Fund

\$264.4 million total

Distributed to **36 counties**
based on



Ranging from

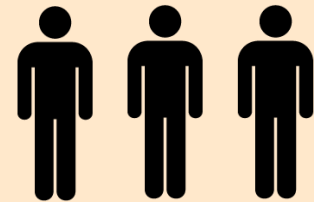
\$44,616,622 for Multnomah Co
to
\$145,334 for Wheeler Co

Cities

20% of State Highway Fund

\$180 million total

Distributed to **200+ cities**
based on



Ranging from

\$40,203,955 for Portland
to
\$1,269 for Lonerock

Oregon Constitution

Article IX, Section 3a

*...revenue from the following shall be used **exclusively for the construction, reconstruction, improvement, repair, maintenance, operation and use of public highways, roads, streets and roadside rest areas in this state:***

Any tax levied on, with respect to, or measured by the storage, withdrawal, use, sale, distribution, importation or receipt of motor vehicle fuel or any other product used for the propulsion of motor vehicles; and

Any tax or excise levied on the ownership, operation or use of motor vehicles...



Cost Responsibility

Revenues...that are generated by taxes or excises imposed by the state
shall be generated in a manner that ensures that the share of
revenues paid for the use of light vehicles...and the share paid for the
use of heavy vehicles, **is fair and proportionate**...



Uses of Major Types of Funds

HIGHWAYS	BICYCLE/ PEDESTRIAN	TRANSIT	RAIL	PORTS	AVIATION
Federal Surface Transportation Funding					
Oregon Highway Fund					
		ConnectOregon Funding			

State Debt Financing Options



State Highway User Tax
Bonds



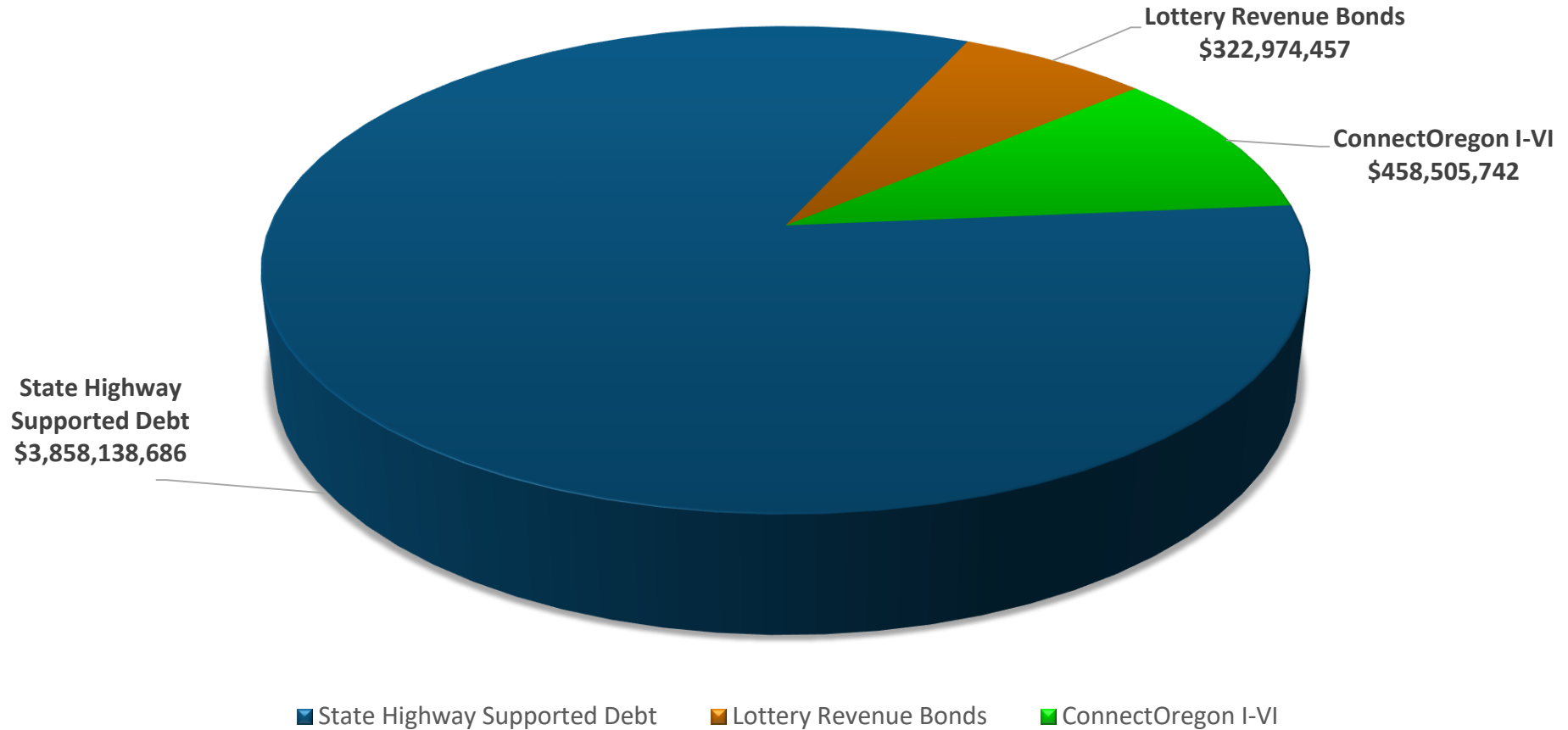
Lottery Revenue
Bonds



State Highway General
Obligation Bonds

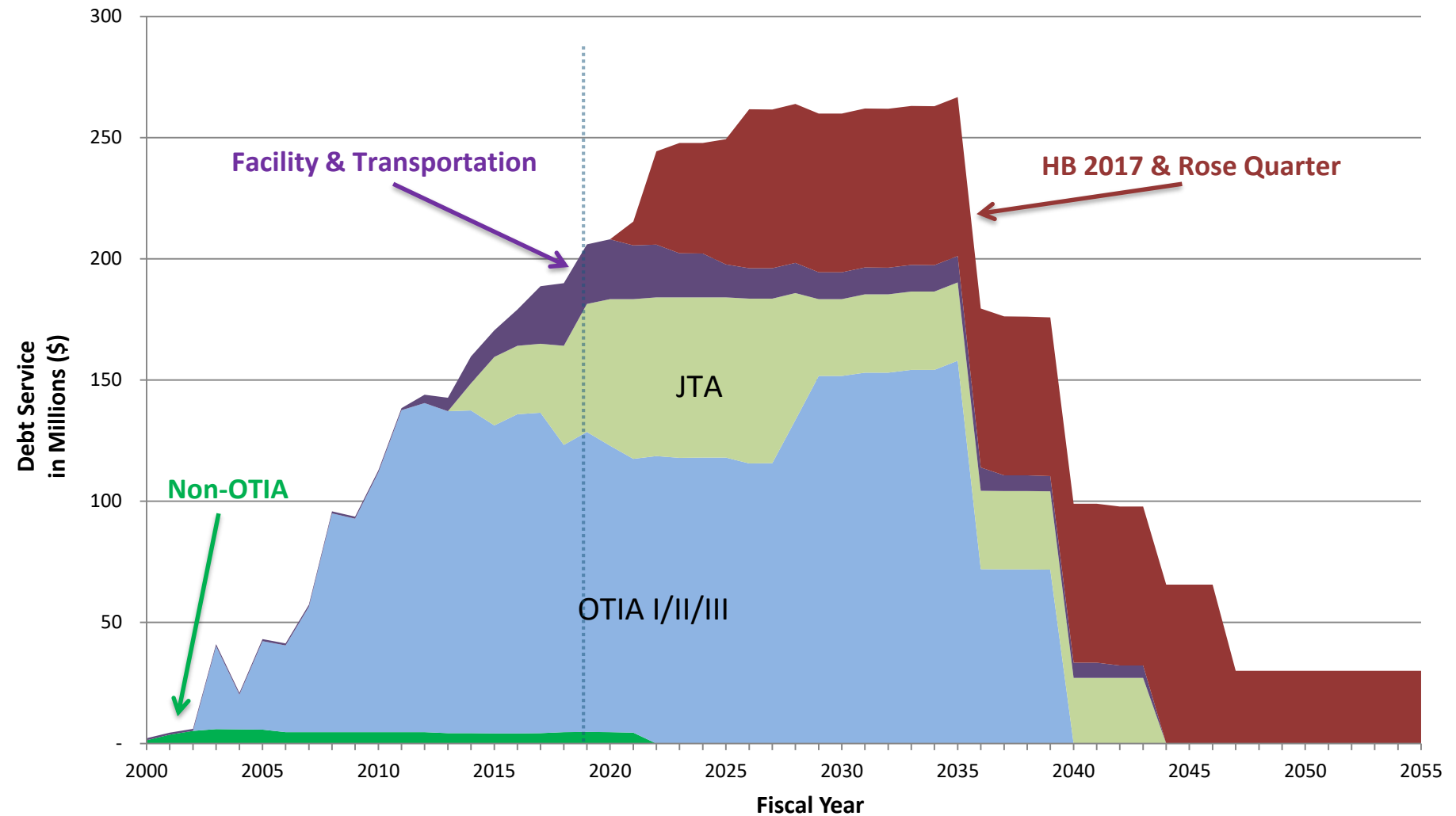


ODOT Outstanding Debt Profile



As of December 31, 2018

ODOT Highway Fund Supported Debt Service Profile



■ Non-OTIA

■ OTIA I/II/III

■ JTA

■ Facility & Transportation GO Bonds

■ HB 2017 Projects & Rose Qtr

(Issued and Projected – As of December 31, 2018)

State and Agency Credit Ratings

Agency	Type	Lien	Fitch	Moody's	S&P
State of Oregon	General Obligation	First Lien	AA+	Aa1	AA+
Department of Transportation	Highway User Tax Revenue	Senior Lien	AA+	Aa1	AAA
		Subordinate Lien			
Department of Administrative Services	COPs	First Lien	AA	Aa2	AA
	Lottery Revenue	First Lien	N/A	Aa2	AAA



Federal Debt Financing Options

Transportation
Infrastructure Finance and
Innovation Act (TIFIA)

Grant Anticipation Revenue
Vehicles (GARVEE)

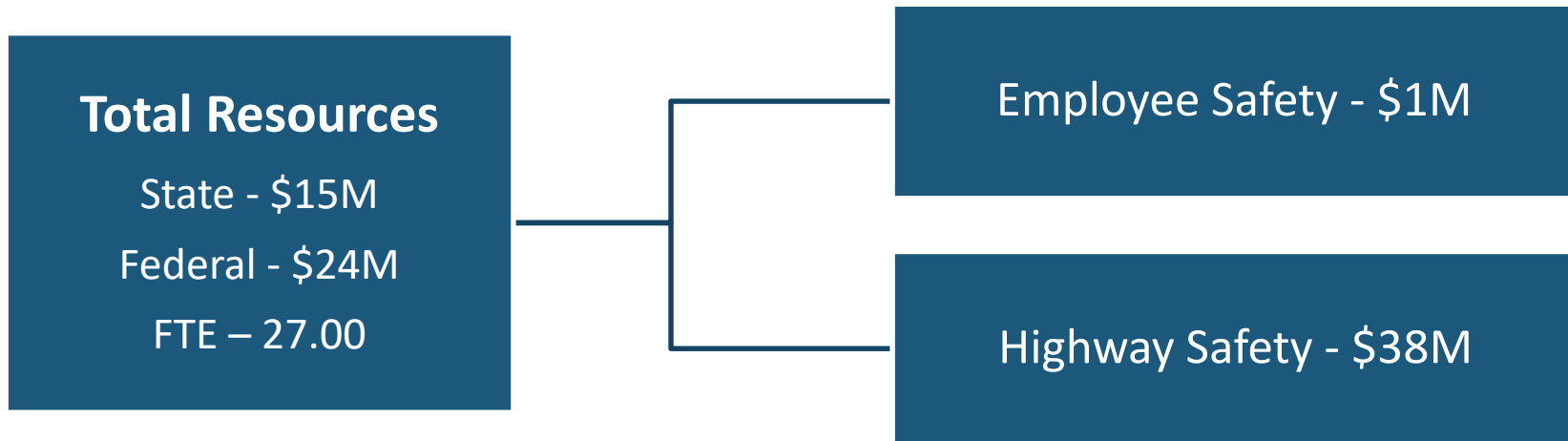


Transportation Safety Division

27.00 FTE



Transportation Safety Programs









Help keep
everyone
safe. *Pay
attention!*

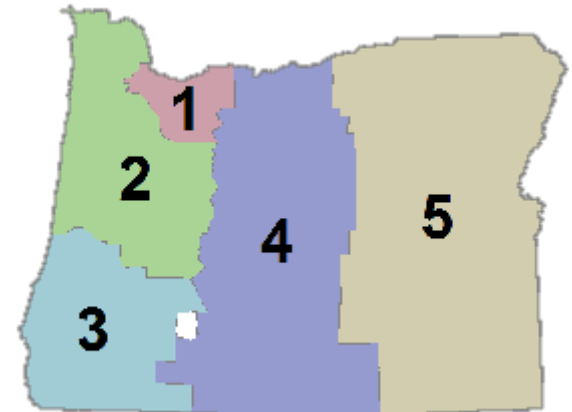
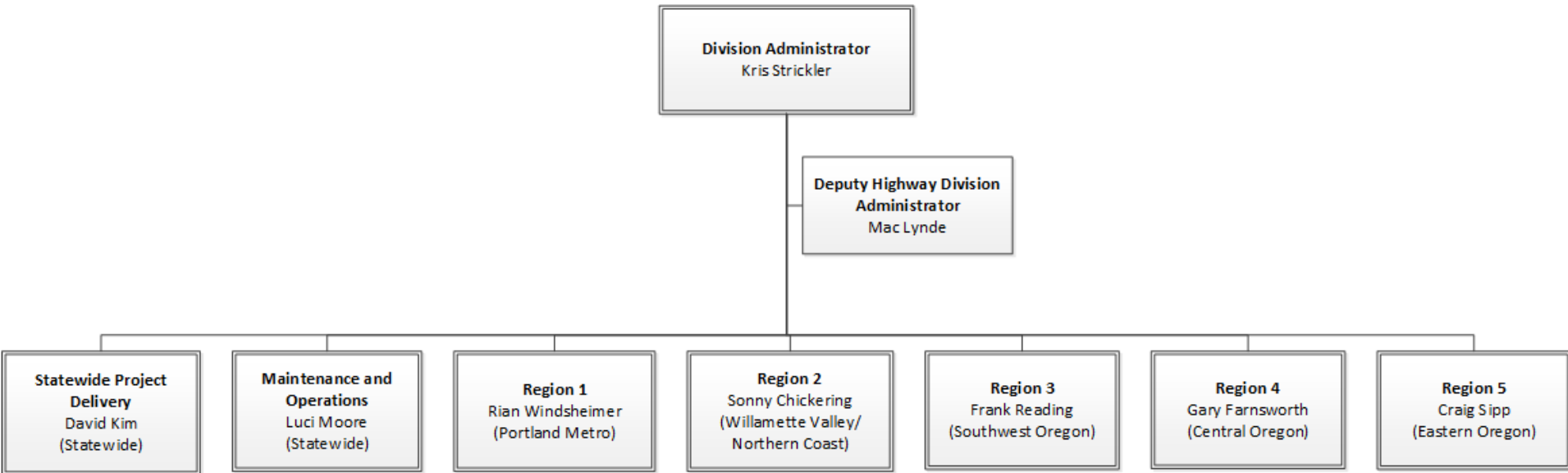
RESPECT THE ZONE.
The Way to Go.

Transportation Safety – ODOT



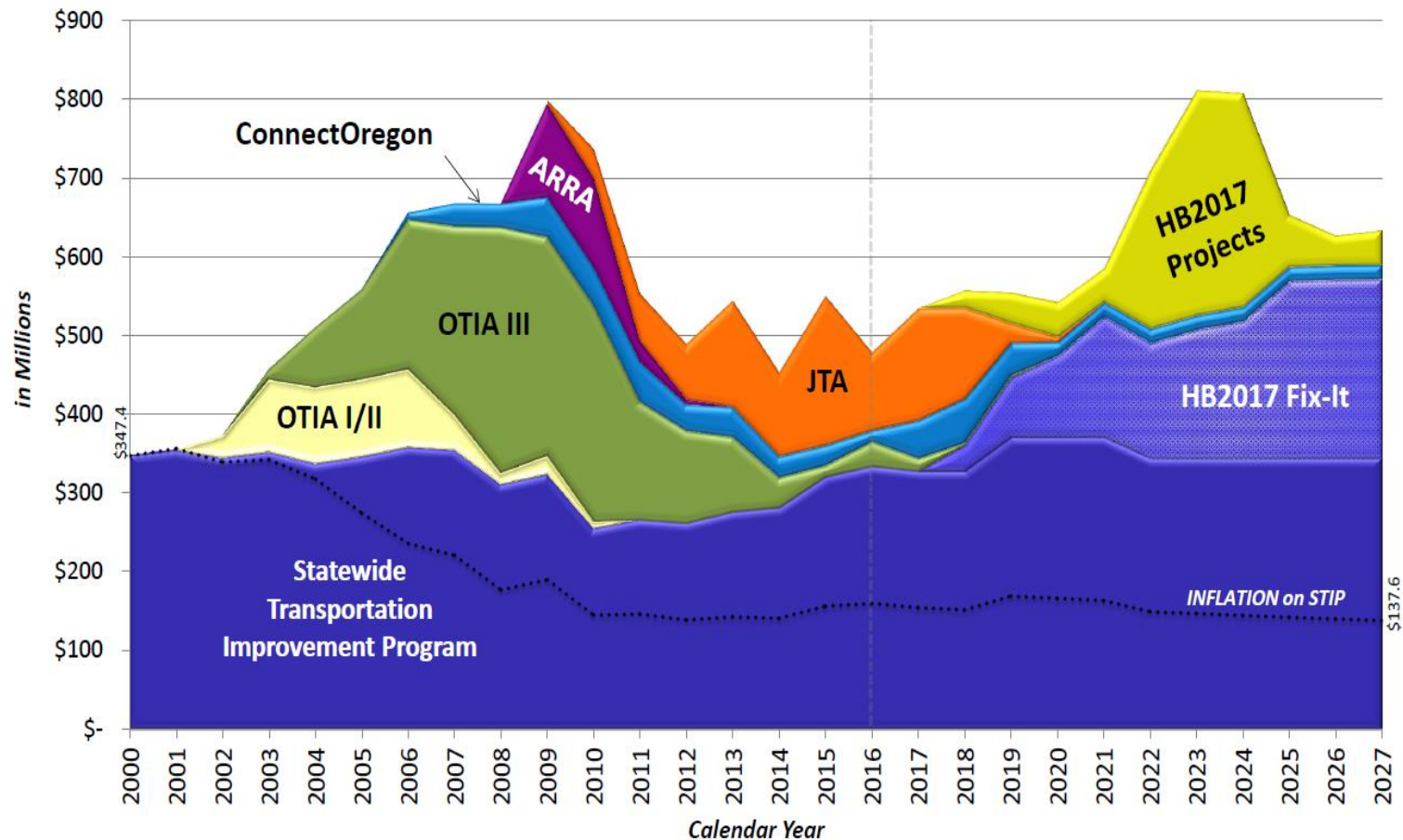
Highway Division

2,663.20 FTE



Transportation Capital Investments

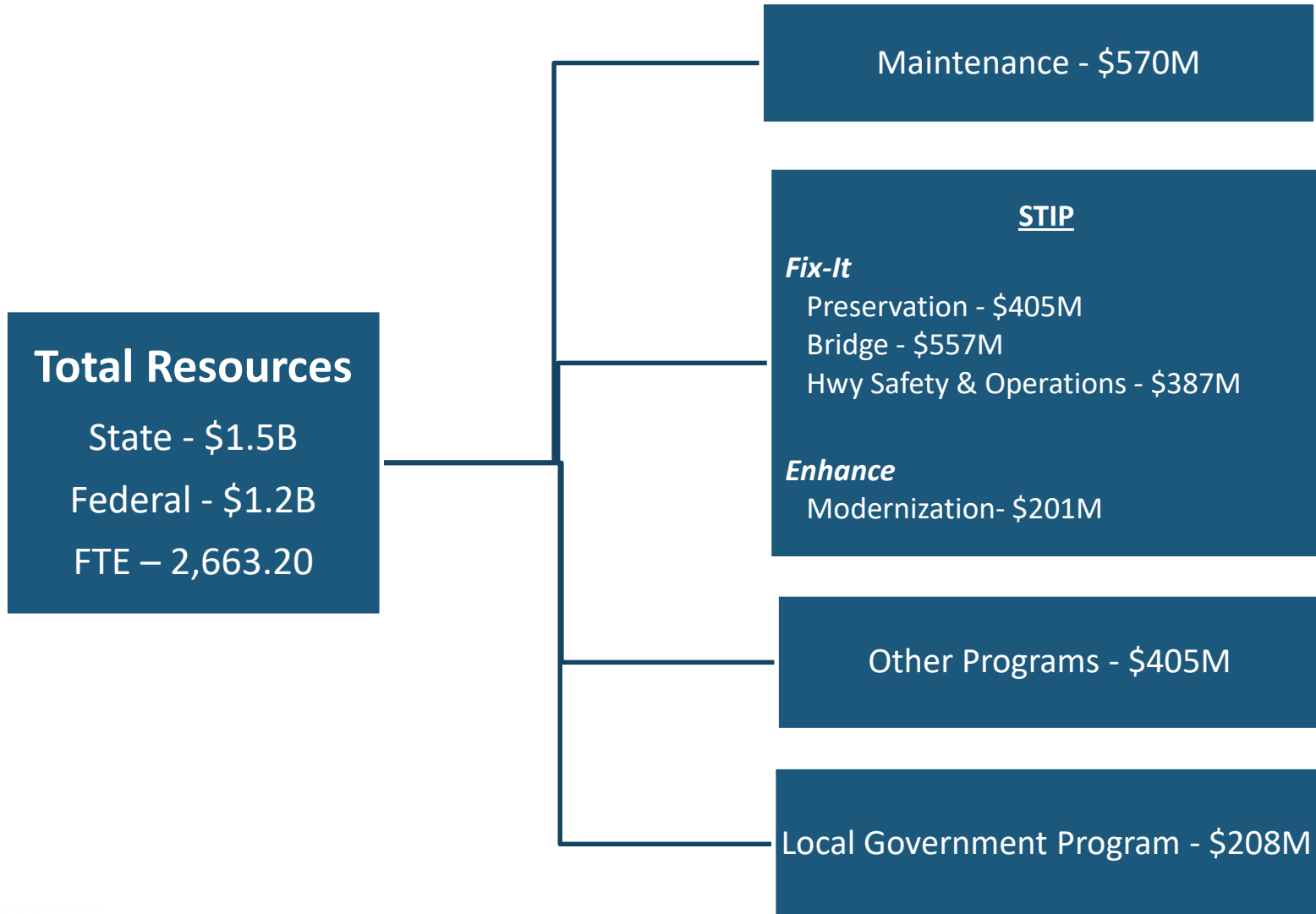
Post House Bill 2017



Highway Budget Office - Revised 07/12/17 (actuals through December 31, 2016)



Highway Division Programs



















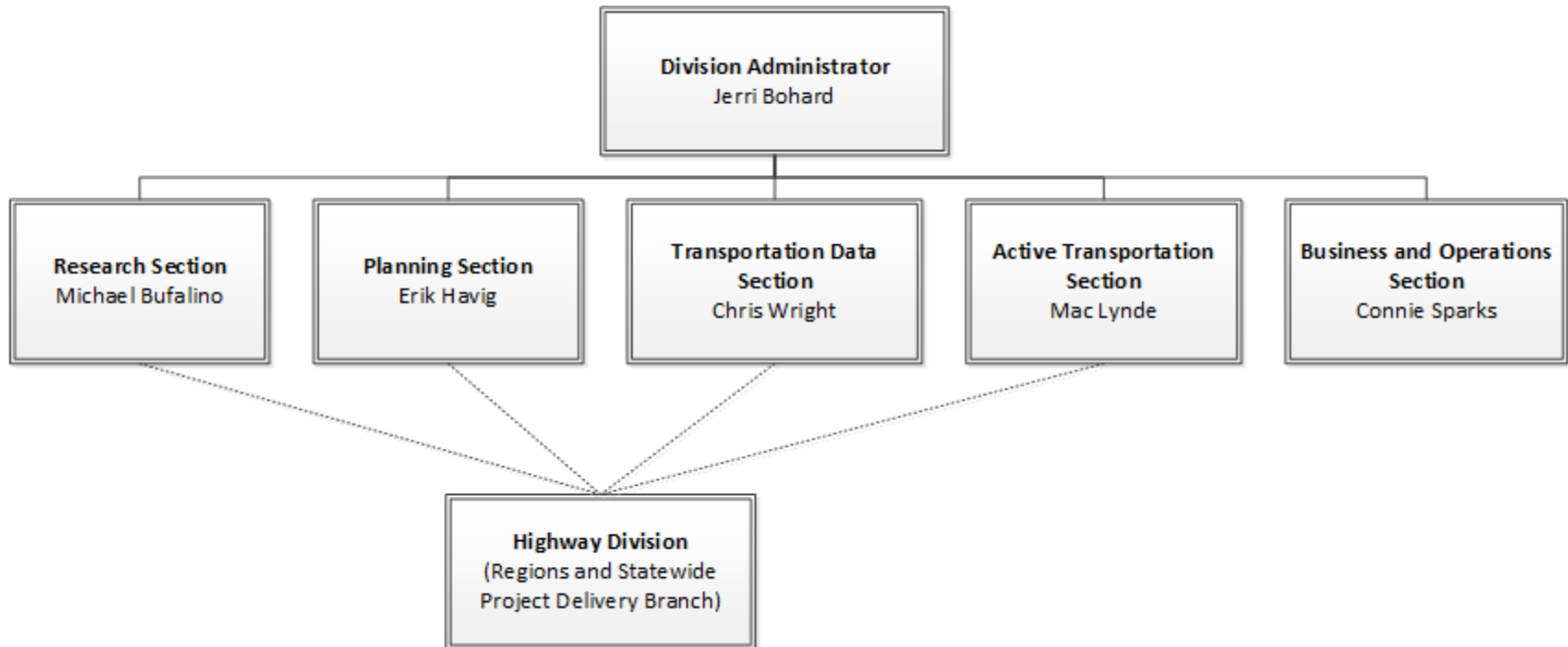
2018/11/13



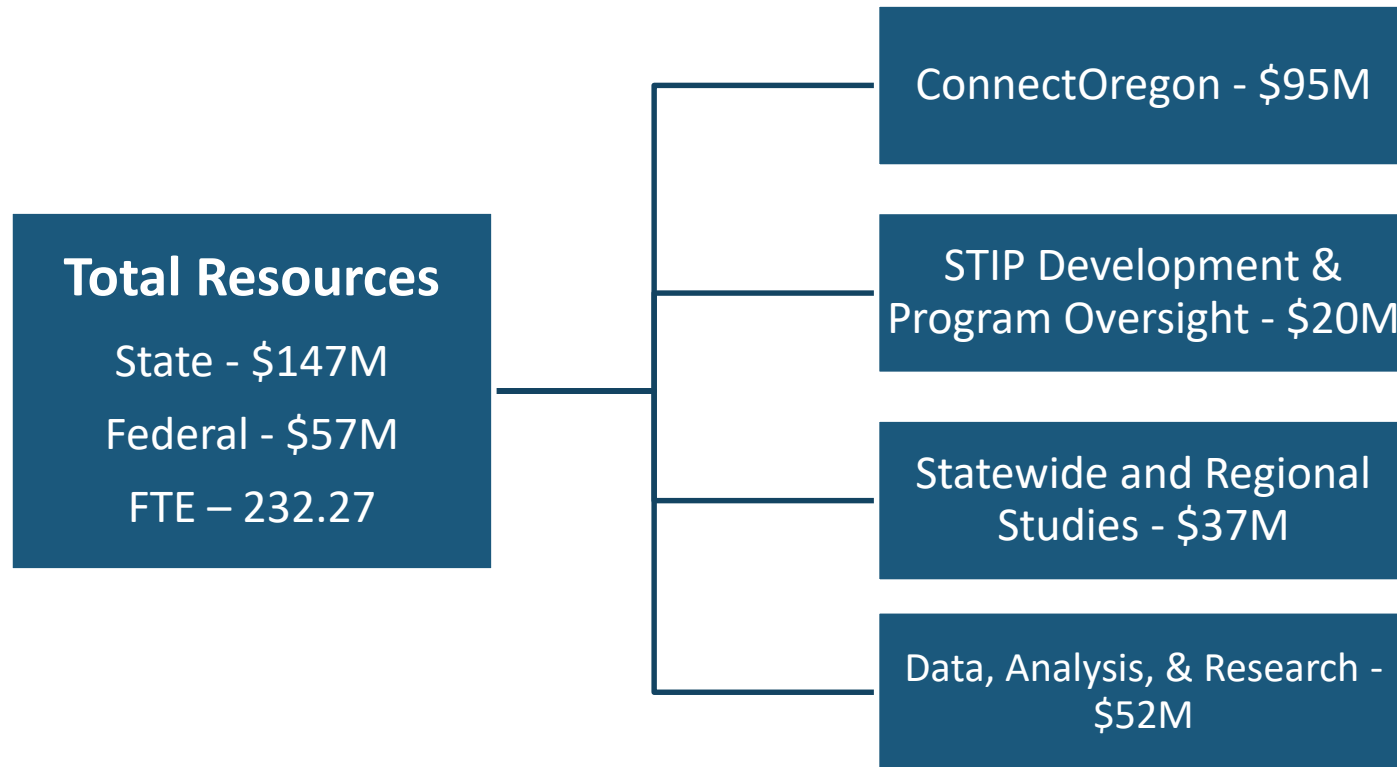
2018/11/13

Transportation Program Development

232.27 FTE



Transportation Program Development Programs









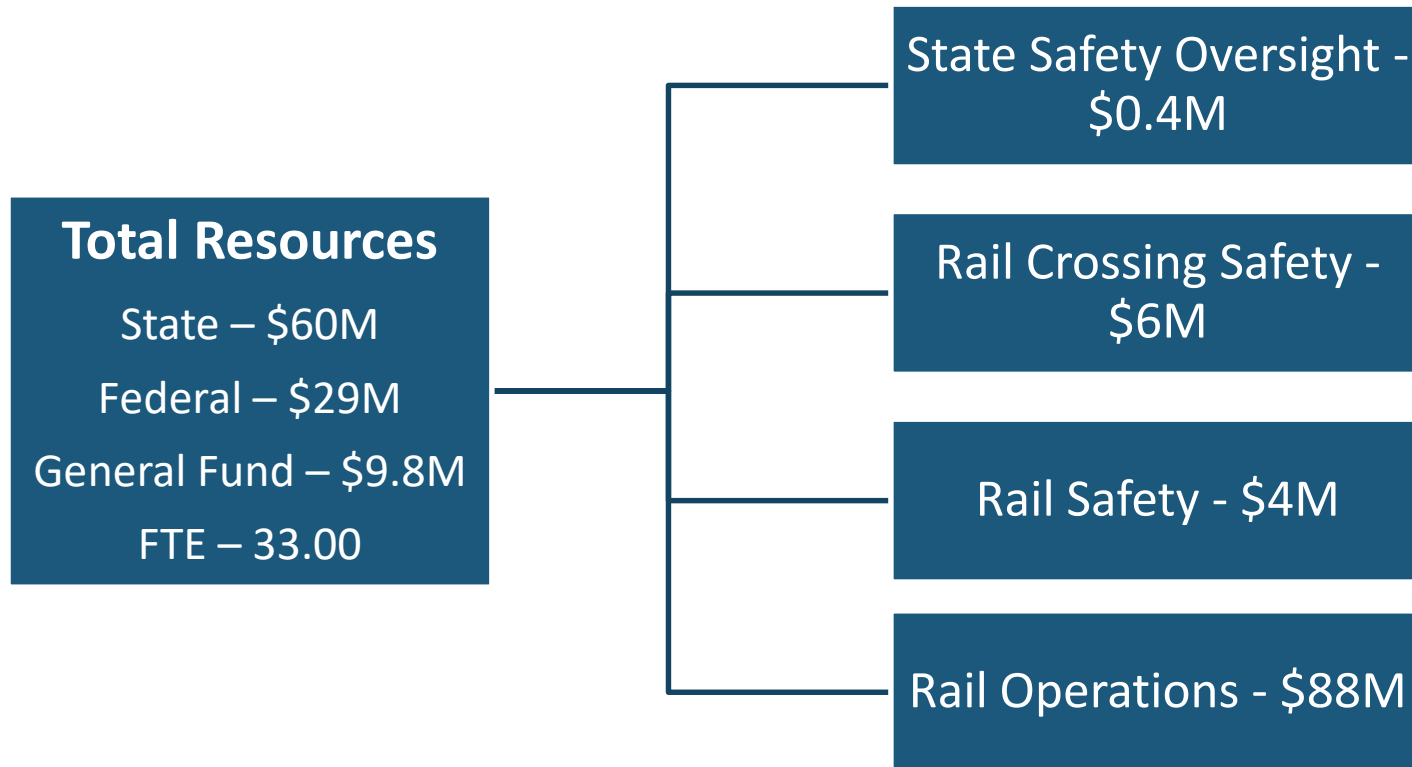


Rail and Public Transit Division

58.00 FTE

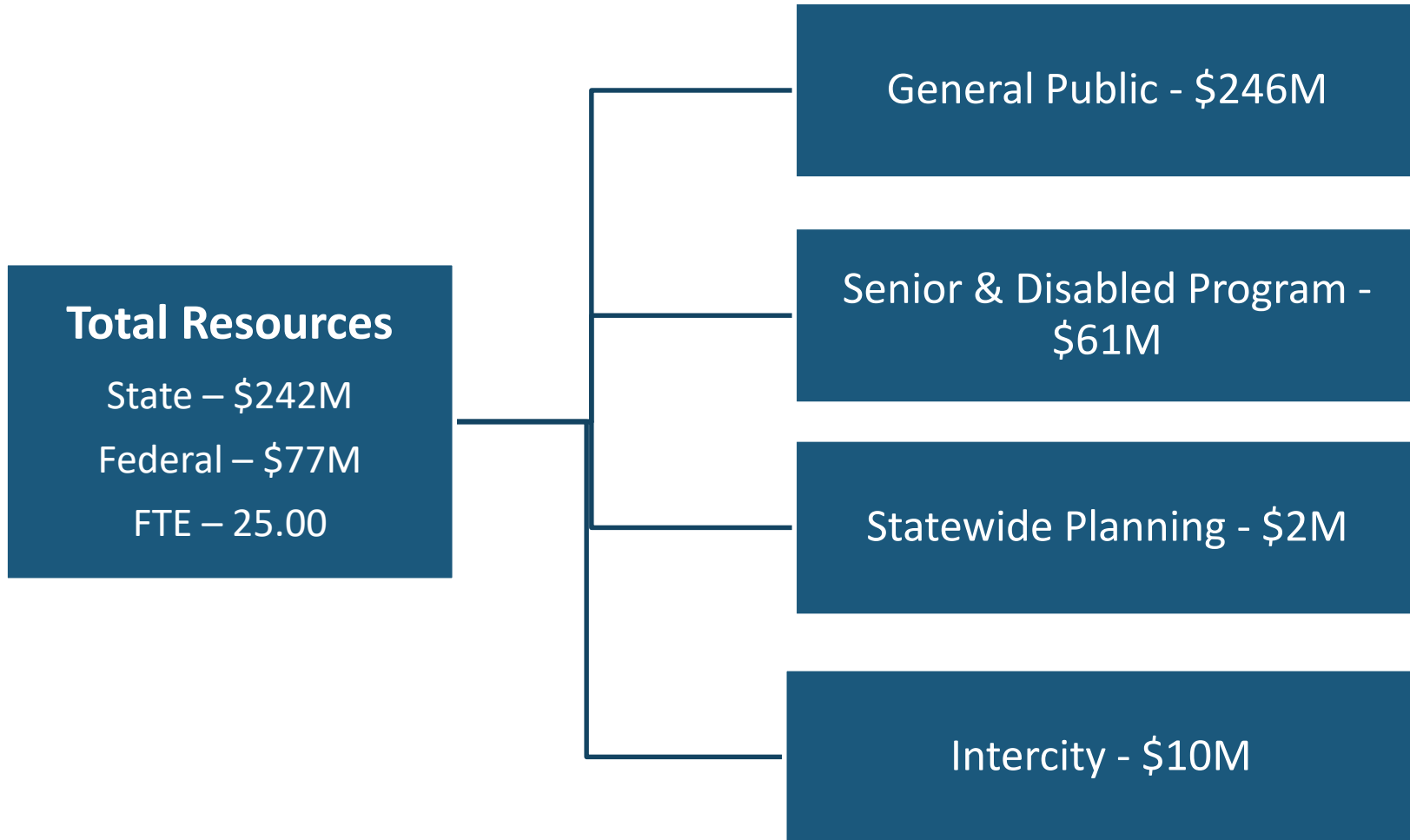


Rail Programs





Transit Programs



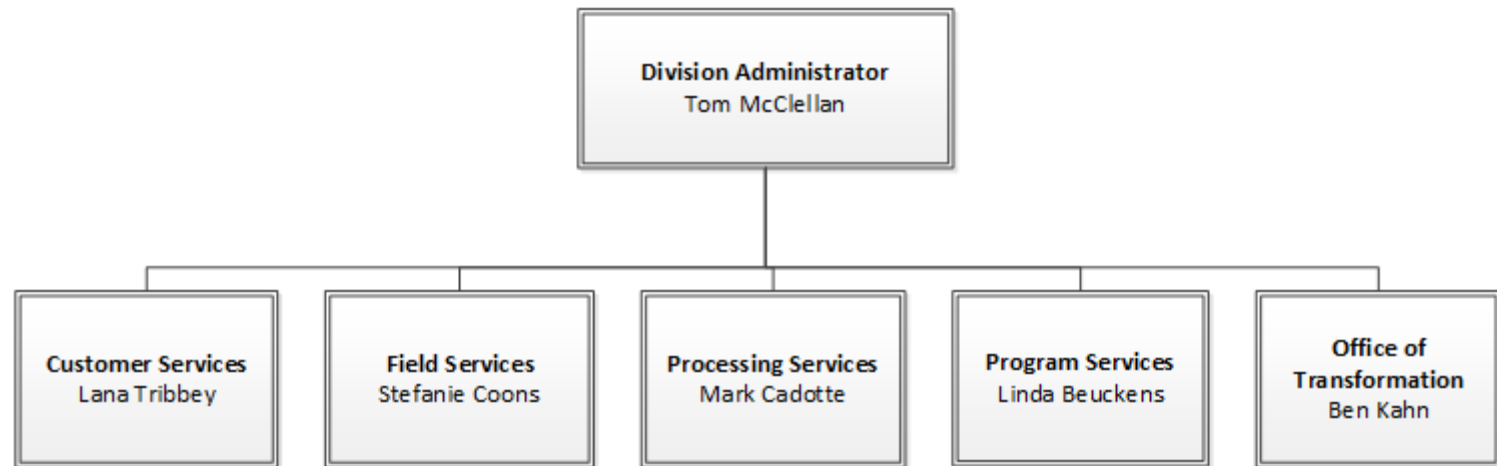




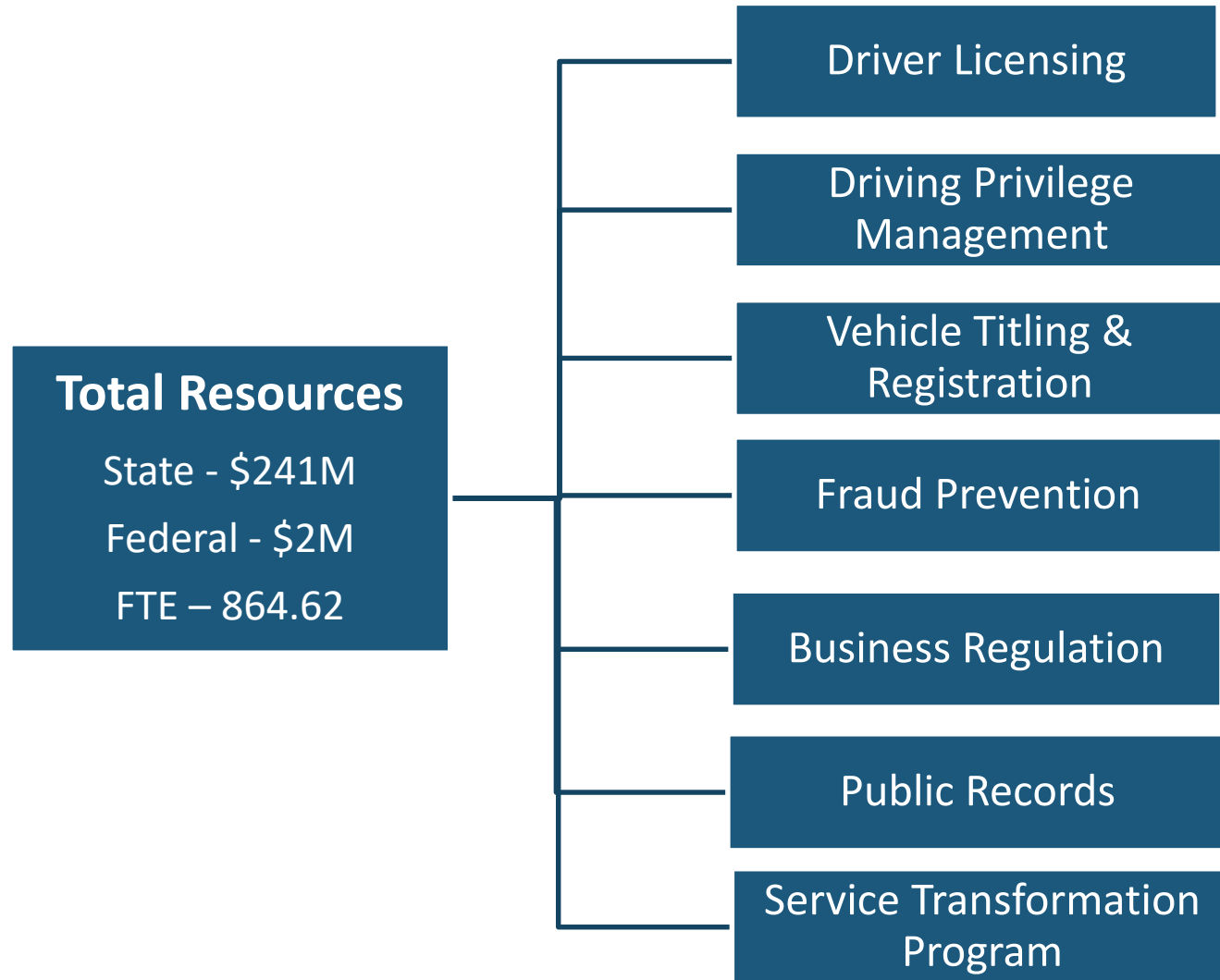


Driver and Motor Vehicles

864.62 FTE



DMV Programs

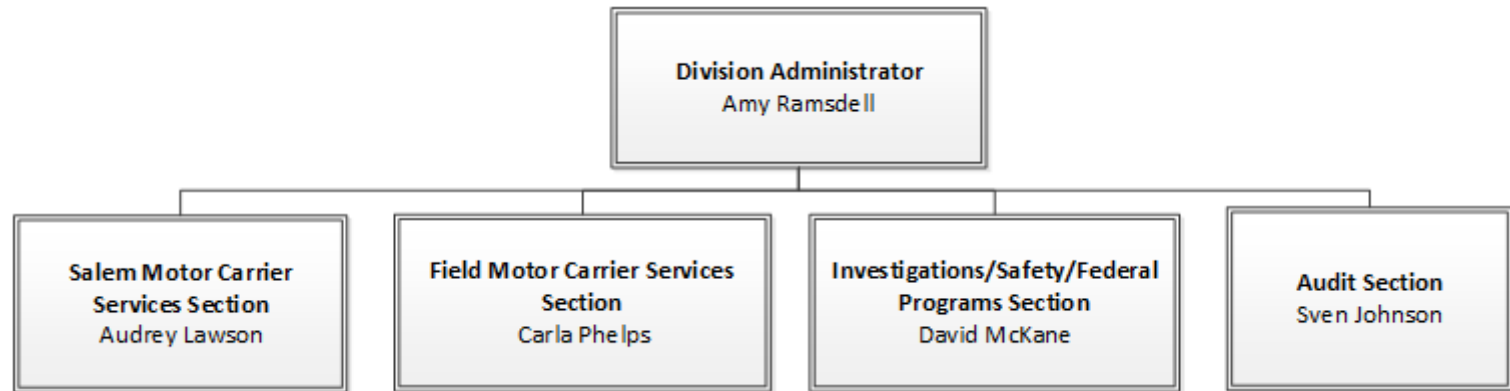




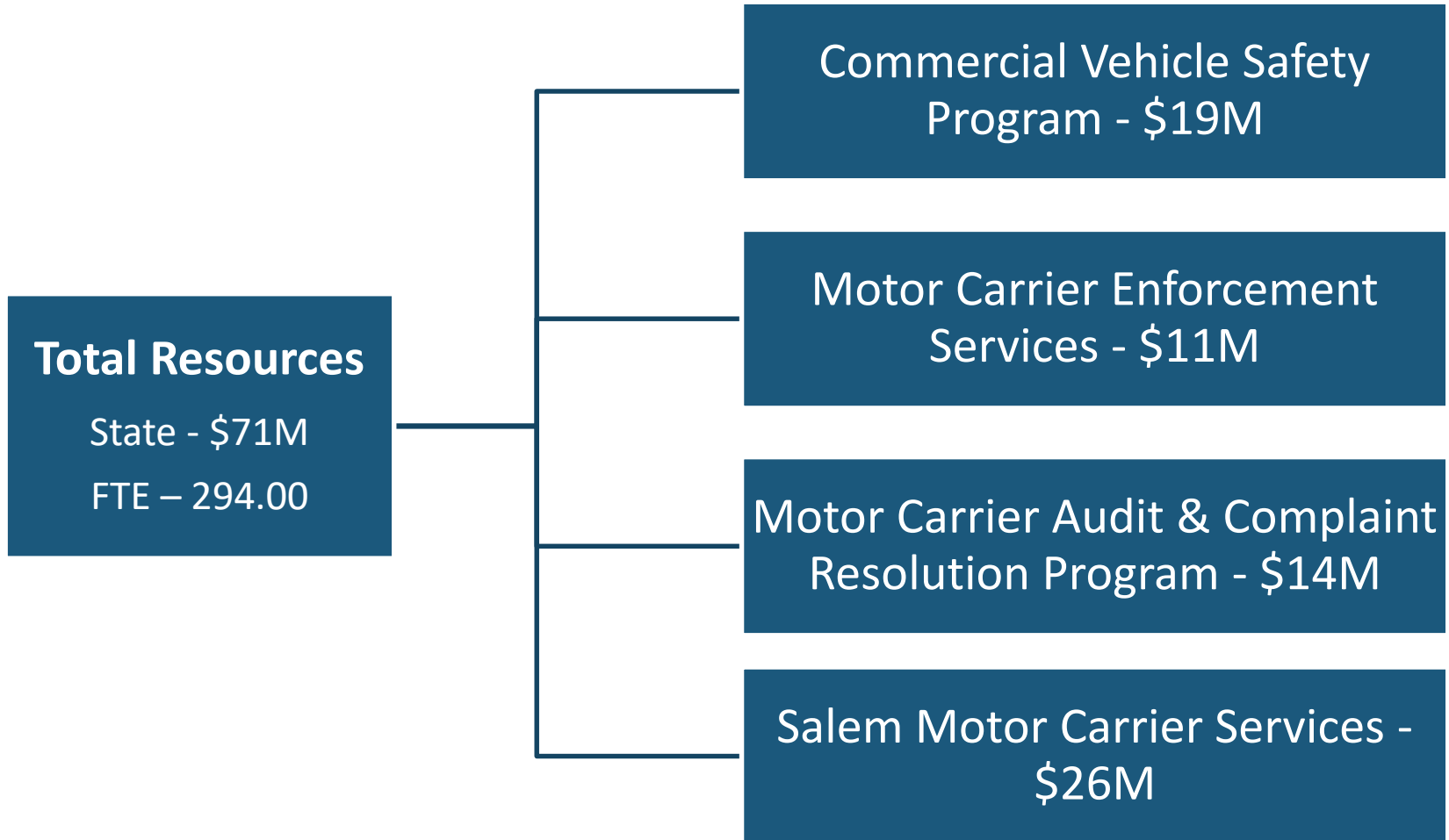


Motor Carrier Transportation Division

294.00 FTE



Motor Carrier Programs



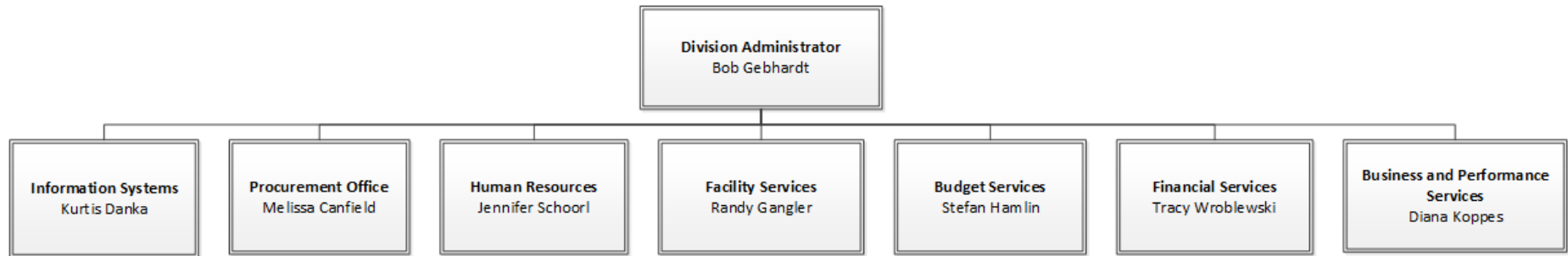




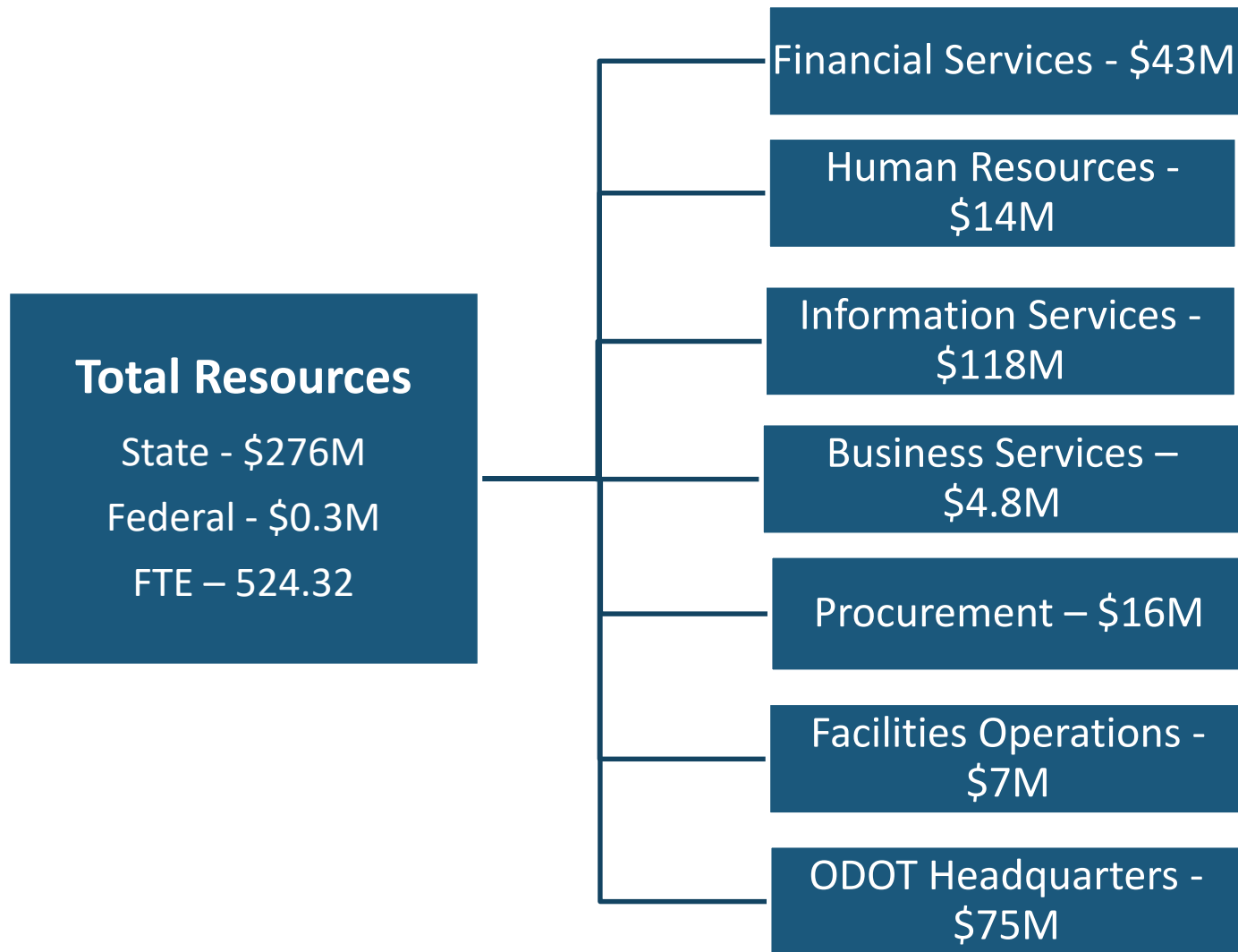


Central Services Division

524.32 FTE



Central Services Programs





Thank you.