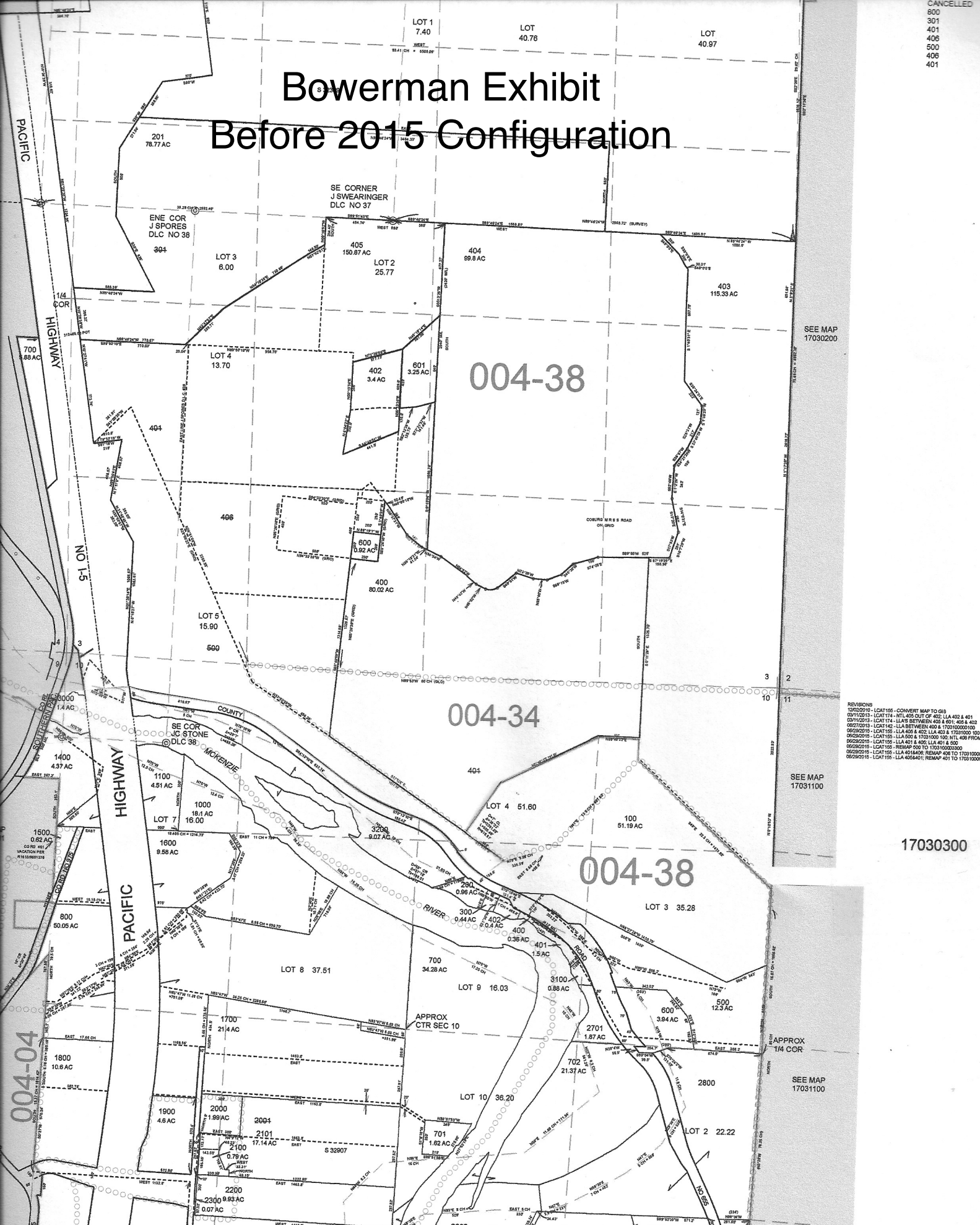


CANCELLED  
800  
301  
401  
406  
500  
406  
401

# Bowerman Exhibit Before 2015 Configuration



SEE MAP  
17030200

SEE MAP  
17031100

REVISIONS  
12/02/15 - LCAT 155 - CONVERT MAP TO GIS  
03/11/2015 - LCAT 174 - INT. 455 OUT OF 402, LLA 402 & 401  
03/12/2015 - LCAT 174 - LLA BETWEEN 402 & 401, 406 & 403  
09/27/2015 - LCAT 142 - LLA BETWEEN 400 & 170310000100  
05/20/2015 - LCAT 155 - LLA 406 & 402, LLA 403 & 17031000100  
05/20/2015 - LCAT 155 - LLA 500 & 17031000100, INT. 408 FROM  
05/20/2015 - LCAT 155 - LLA 401 & 402, LLA 401 & 400  
05/20/2015 - LCAT 155 - REMAP 500 TO 170310002000  
05/20/2015 - LCAT 155 - LLA 401 & 402, REMAP 408 TO 17031000  
05/20/2015 - LCAT 155 - LLA 406 & 402, REMAP 401 TO 17031000

17030300

SEE MAP  
17031100

SECTION 3 T.17S. R.3W. W.M.  
Lane County  
1" = 400'

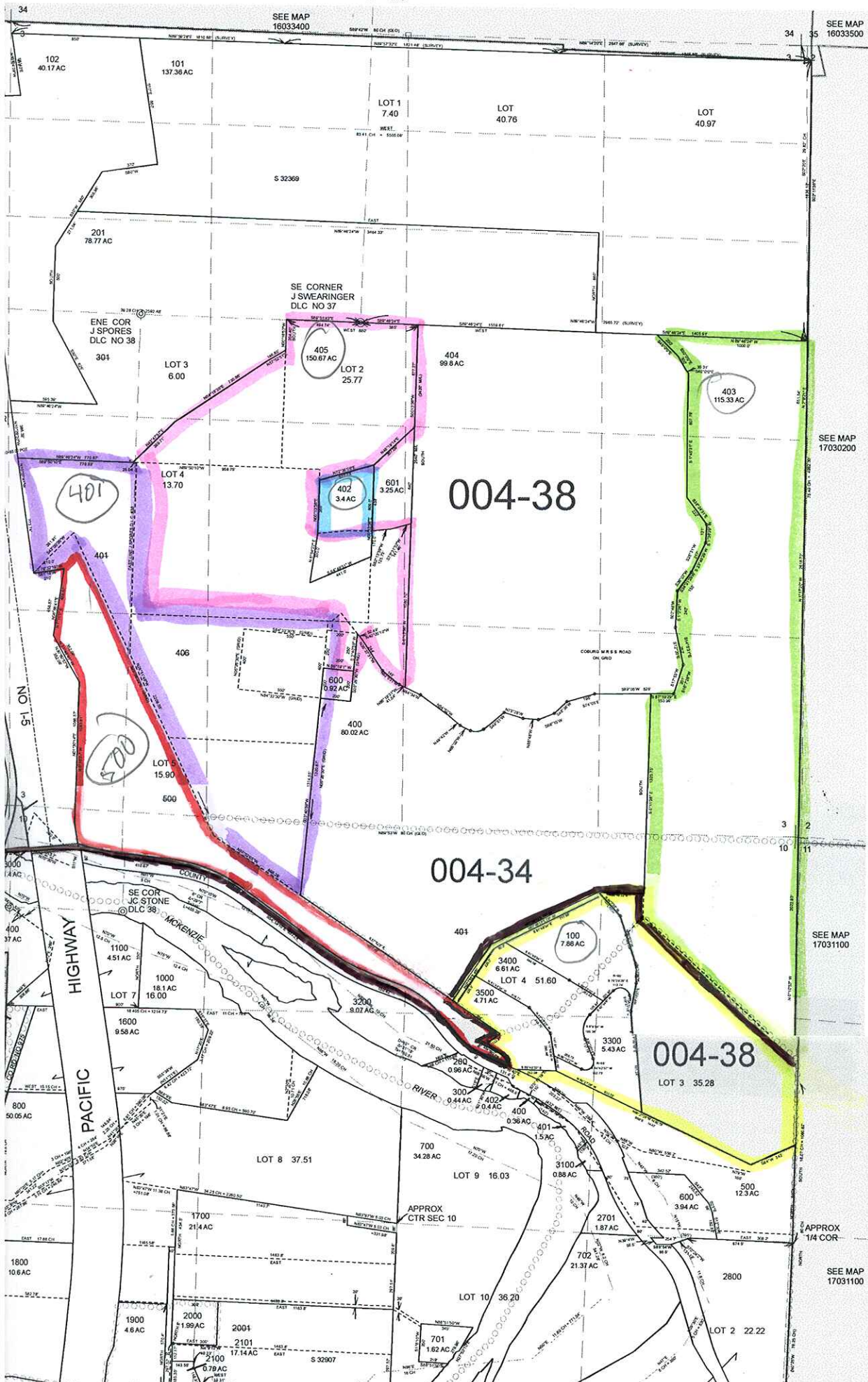
BEFORE

17030300

ASSESSMENT AND  
LOCATION ONLY

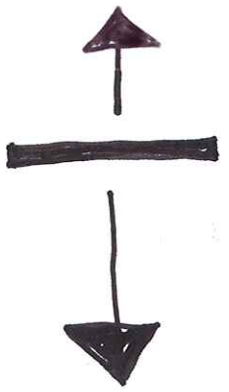
LCATJG - 2015-06-29 14.24

- CANCELLED
- 800
- 301
- 401
- 406
- 500
- 406
- 401



REVISIONS  
 12/02/05 - LCAT155 - CONVERT MAP TO GIS  
 03/11/2013 - LCAT174 - NTL 405 OUT OF 402, LLA 402 & 401  
 03/11/2013 - LCAT174 - LLA'S BETWEEN 402 & 301, 402 & 403  
 06/27/2013 - LCAT142 - LLA BETWEEN 400 & 170310000100  
 06/29/2015 - LCAT155 - LLA 402 & 403, LLA 402 & 17031000100  
 06/29/2015 - LCAT155 - LLA 500 & 17031000100, NTL 406 FROM 401  
 06/29/2015 - LCAT155 - LLA 401 & 402, LLA 401 & 500  
 06/29/2015 - LCAT155 - REMAP 500 TO 17031000200  
 06/29/2015 - LCAT155 - LLA 401 & 402, REMAP 408 TO 17031000300  
 06/29/2015 - LCAT155 - LLA 405 & 401, REMAP 401 TO 17031000300

17030300



SEE MAP 17030200

SEE MAP 17031100

SEE MAP 17031100



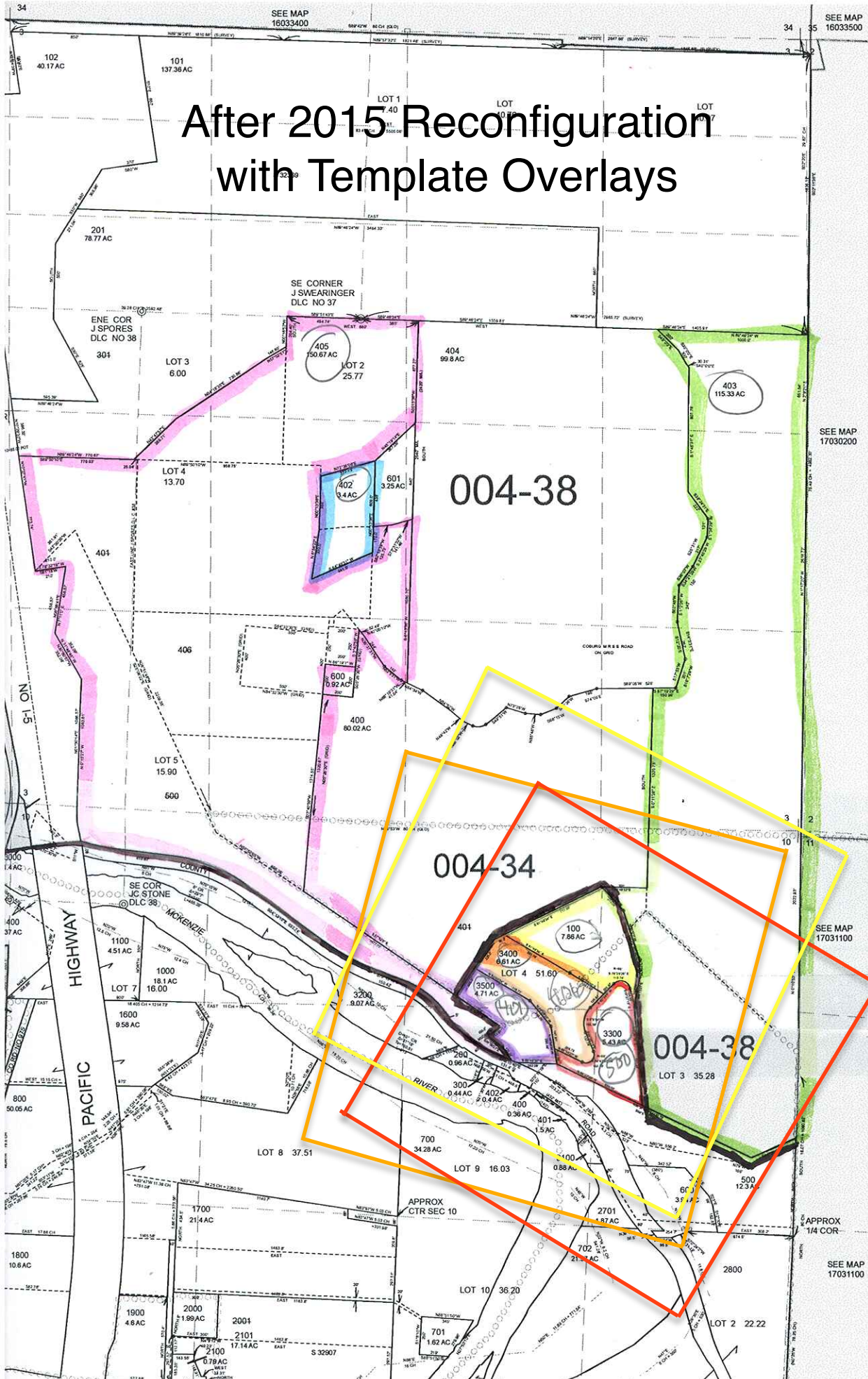
AFTER

17030300

LCATJXG - 2015-06-29 14:24

- CANCELLED
- 800
- 301
- 401
- 406
- 500
- 406
- 401

# After 2015 Reconfiguration with Template Overlays



REVISIONS  
 12/02/2010 - LCAT155 - CONVERT MAP TO GIS  
 02/10/2013 - LCAT174 - INTR 405 OUT OF 402, LLA 402 & 401  
 03/12/2013 - LCAT174 - LLA'S BETWEEN 405 & 601, 405 & 402  
 06/27/2013 - LCAT142 - LLA BETWEEN 405 & 17030000100  
 06/29/2013 - LCAT155 - LLA 405 & 402, LLA 403 & 17030000100  
 06/29/2013 - LCAT155 - LLA 505 & 17030000100, INTR 406 FROM 401  
 06/29/2013 - LCAT155 - LLA 401 & 402, LLA 401 & 500  
 06/29/2013 - LCAT155 - REMAP 500 TO 17030000300  
 06/29/2013 - LCAT155 - LLA 401 & 402, REMAP 406 TO 17030000300  
 06/29/2013 - LCAT155 - LLA 401 & 402, REMAP 401 TO 17030000350

17030300



SEE MAP 17031100

SEE MAP 17030200

SEE MAP 16033500

SEE MAP 16033400

SEE MAP 17031100