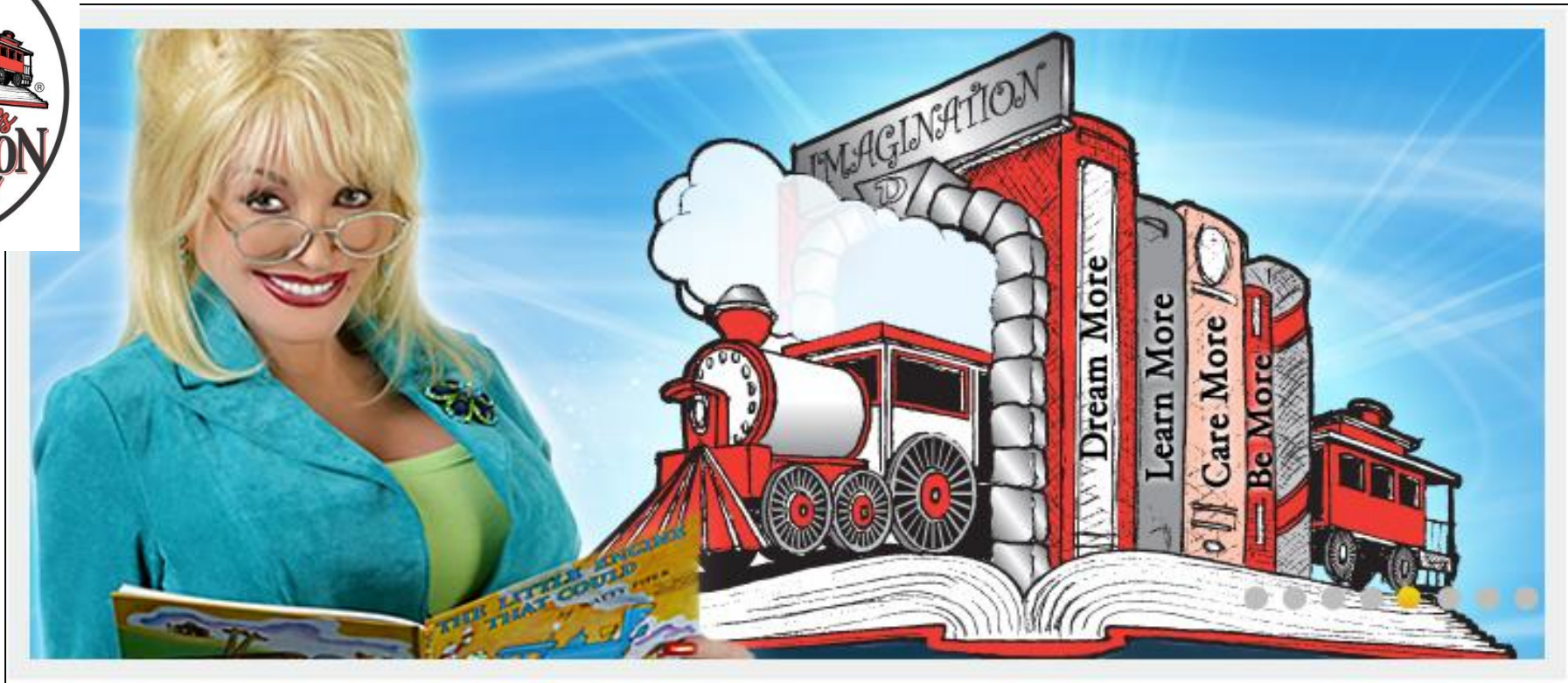


# Dolly Parton's Imagination Library



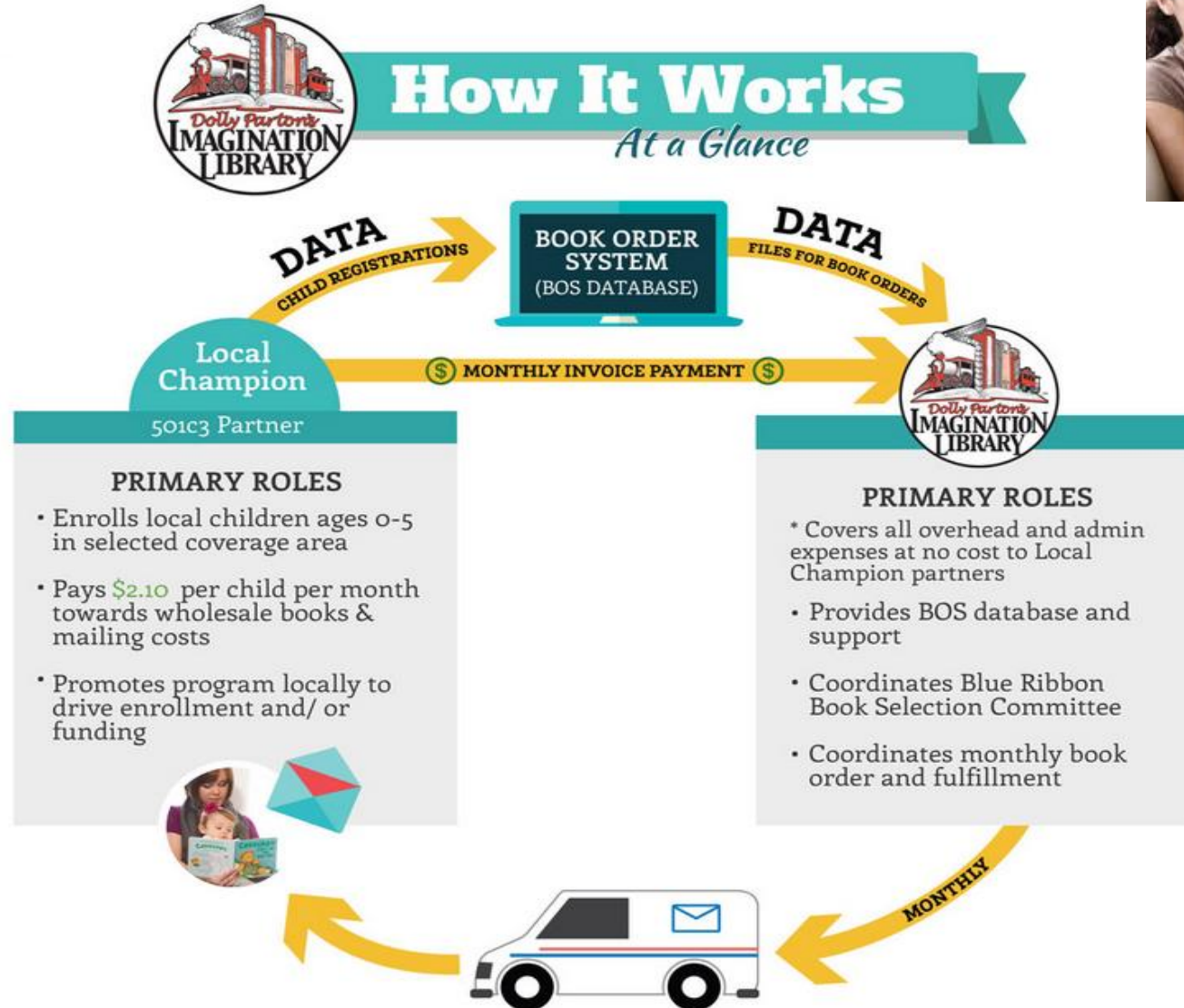
# What is Dolly Parton's Imagination Library?



- Founded by Dolly Parton
- A book-gifting program
- High quality, age-appropriate books mailed to child's home each month until 5<sup>th</sup> birthday



# A Partnership Model





# Why Imagination Library?

Our investment pays great dividends



Economist and Nobel Laureate James Heckman of the University of Chicago argues that:

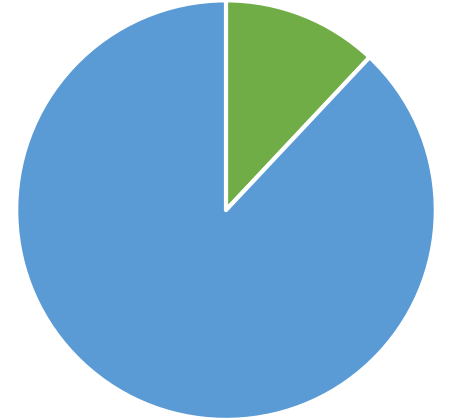
**“The highest rate of return in early childhood development comes from investing as early as possible, from birth through age five, in disadvantaged families. . . skills beget skills in a complementary and dynamic way. . .”** (2007)

# Why Imagination Library?

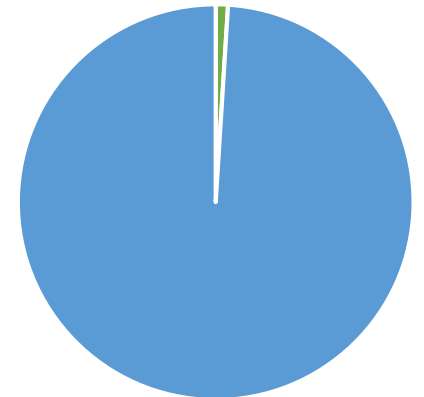
Families read to their children more often.



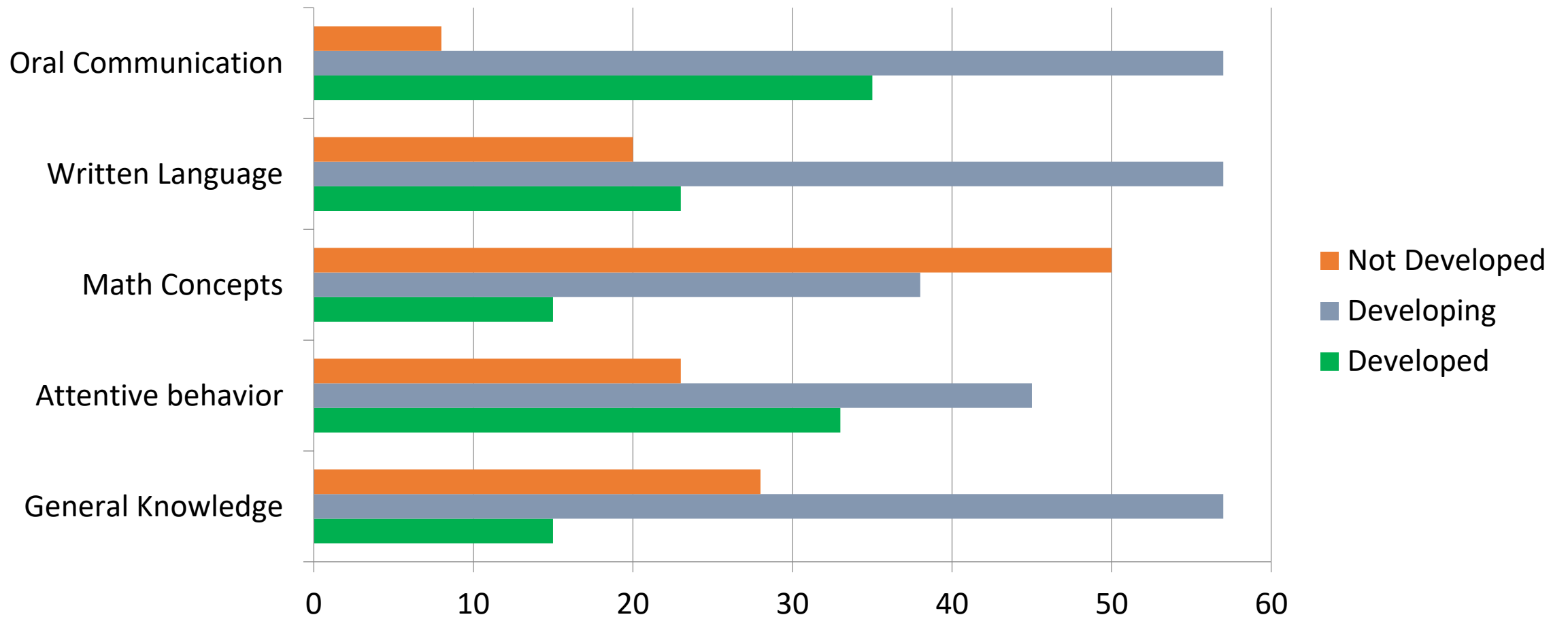
Battle Creek, MI  
*Before DPIL (2008)*  
12% of families never read to their children



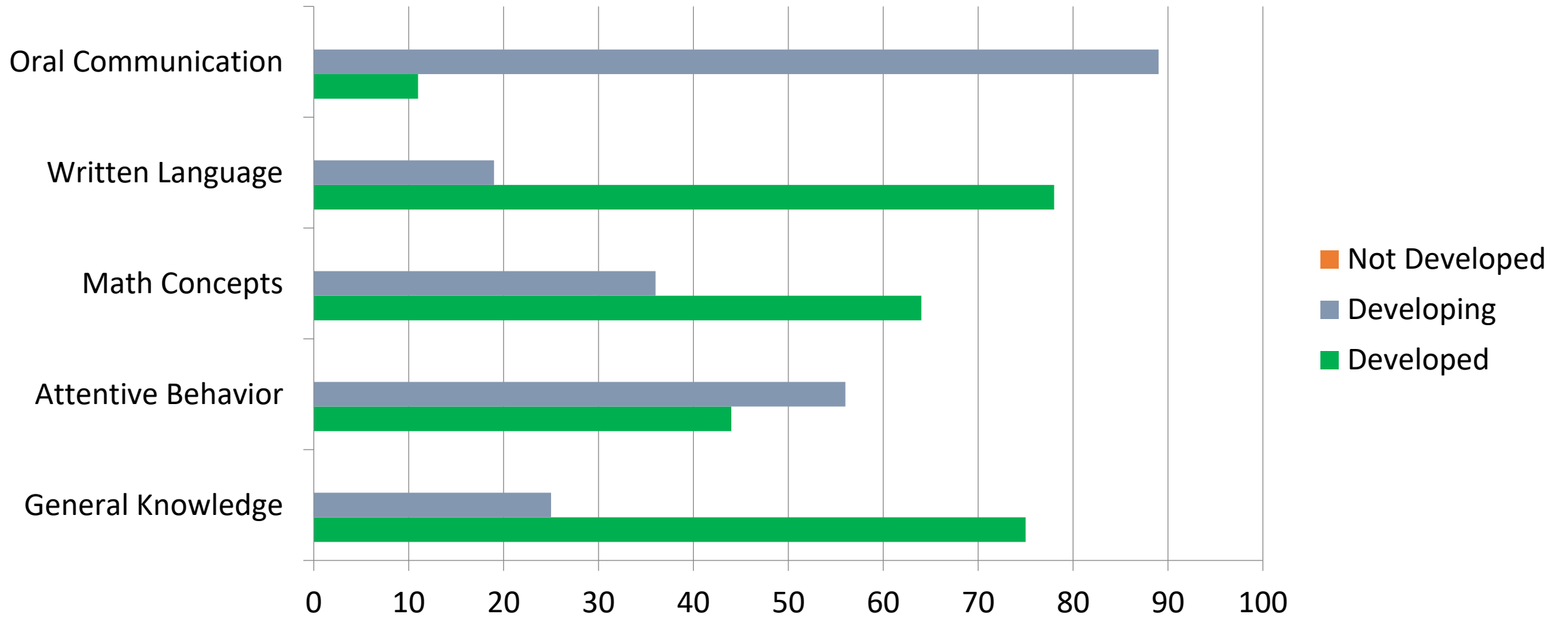
*After DPIL (2011)*  
1% of families never read to their children



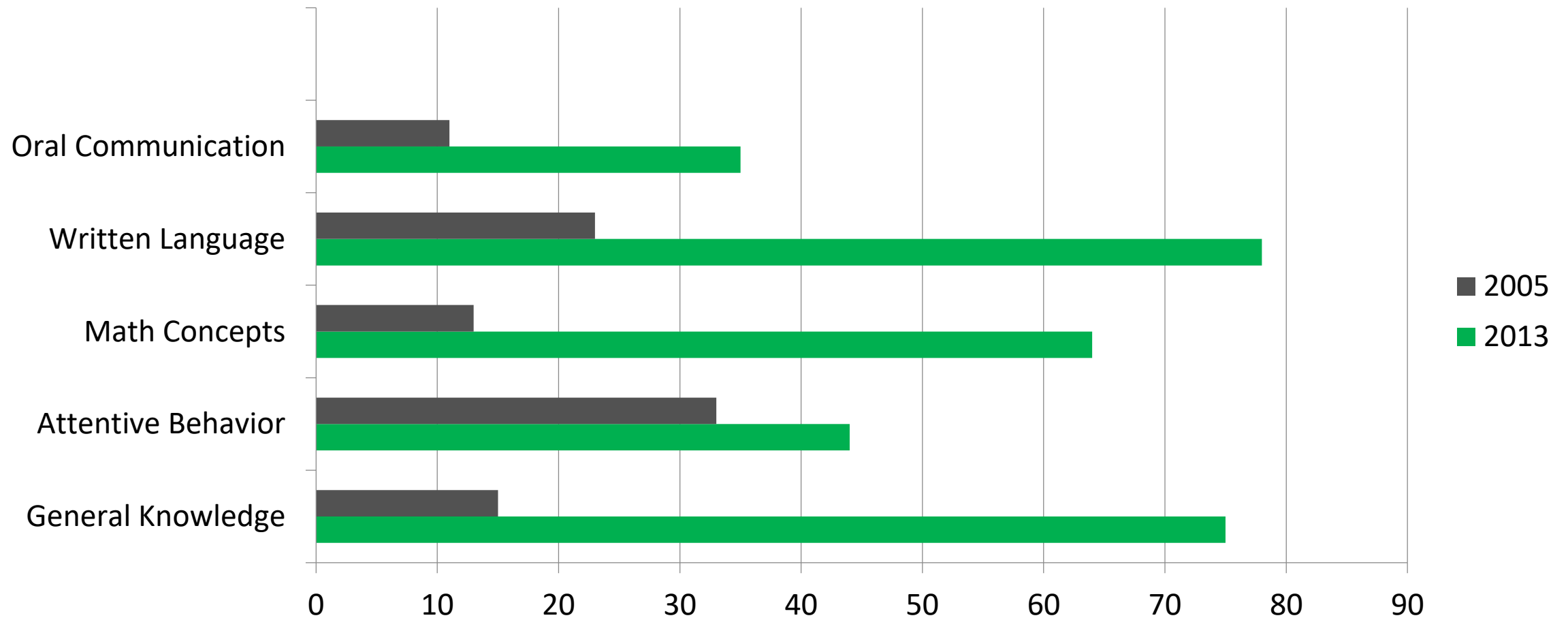
# Kindergarten Scores 2005 (Des Arc Arkansas)



# Kindergarten Scores 2013 (Des Arc Arkansas)



# Kindergarten Scores 2005 vs 2013: Developed (Des Arc Arkansas)





# Why Imagination Library?

Increased kindergarten readiness



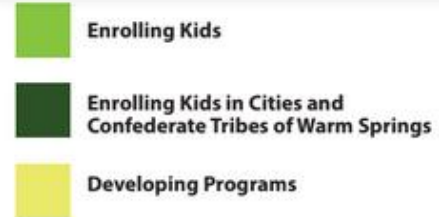
## READING READINESS SKILLS:

- Print awareness
- Vocabulary
- Phonological awareness
- Narrative skills
- Letter knowledge

# Imagination Library in Oregon



## DOLLY PARTON'S IMAGINATION LIBRARY ACROSS OREGON



(115) Number of Kids Enrolled Per County

