

Oregon Psychiatric Security Review Board

Alison Bort, JD, PhD
PSRB Executive Director

Sid Moore, JD
PSRB Deputy Director

January 31, 2019

What Does PSRB Do?

- Supervises those judged:
 - Guilty Except for Insanity (GEI);
 - Responsible Except for Insanity (REI);
 - Adults with mental illnesses resistant to treatment and in need of supervision and monitoring (PSRB Civil Commitment)
- Operates Sex Offender Risk Classification/Relief Program
- Operates Firearm Relief/Records Reconciliation Program

What We Don't Do

1. Supervise .370 or “Aid and Assist” defendants
2. Supervise Traditional Civil Commitments
3. Provide Clinical Services
4. Fund treatment and supervision
5. Establish new contracts for housing

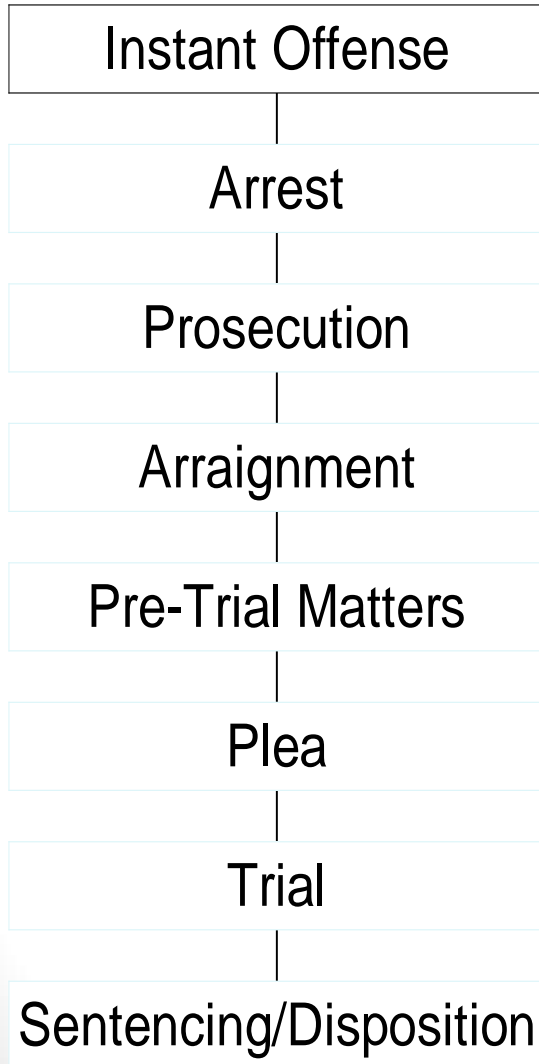
History of PSRB

- When?
- Why Then?
- Why Now?
- Mission is public safety and community reintegration

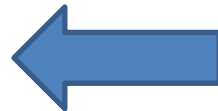
Adult Panel & Juvenile Panel:

- 10 member. Part-time. Multi-disciplinary.
 - 2 psychiatrists
 - 2 psychologists
 - 2 attorneys experienced in criminal practice
 - 2 parole/probation officers
 - 2 public members
- In addition to Board responsibilities, virtually all Board Members maintain FT employment
- Board Member Stipend per hearing day: \$362
- Conduct hearings weekly
- **11 FTE**

Pathway Into Criminal Commitment



- ▶ Difficulty in jail
→ Judge declares incompetent to proceed w/ case
“370” →
- ▶ Usually sent to hospital → Back to jail → Eval then Finish case



- ▶ Guilty Except for Insanity

How the Board Meets Objectives

1. Oversees conditional release of clients.
2. Conducts timely hearings to make necessary determinations regarding each patient.
3. Works collaboratively with OHA/DHS and community mental health providers to ensure adequate continuum of treatment and residential services are available.
4. Conducts outreach with a multitude of stakeholders to lessen the barriers for GEI patients to integrate fully into the community setting.
5. Provides training and education to judges, district attorneys, public defenders and certified forensic evaluators to decrease inappropriate GEIs from entering the system.
6. Provides training and education to law enforcement to ensure timely transport of high risk individuals to more secure settings.
7. Collaborate with partners toward the development of a delegated Restorative Justice Program for PSRB-related victims.

Sex Offender Classification and Relief Program Snapshot

- 3-2-1 classification system
- Responsible for classifying 230 individuals required to register who had ever been under the PSRB
- 98% of statutorily required ratings completed:
 - 183 assessments
 - 34 dead
 - 9 pending a triggering event
 - 3 pending additional information
- Rules for reclassification and relief program filed on time (December 2018)

PSRB Civil Commitment Snapshot

- Doubled census since last time before the legislature (13 clients)
- Conditional release rules apply
- 31% on conditional release
- 6.72 years (average between crime and petition for this status)
- 1 was civilly committed following DOC
- 1 was civilly committed following traditional civil commitment

GEI Snapshot (January 2019)

Majority live in the Community

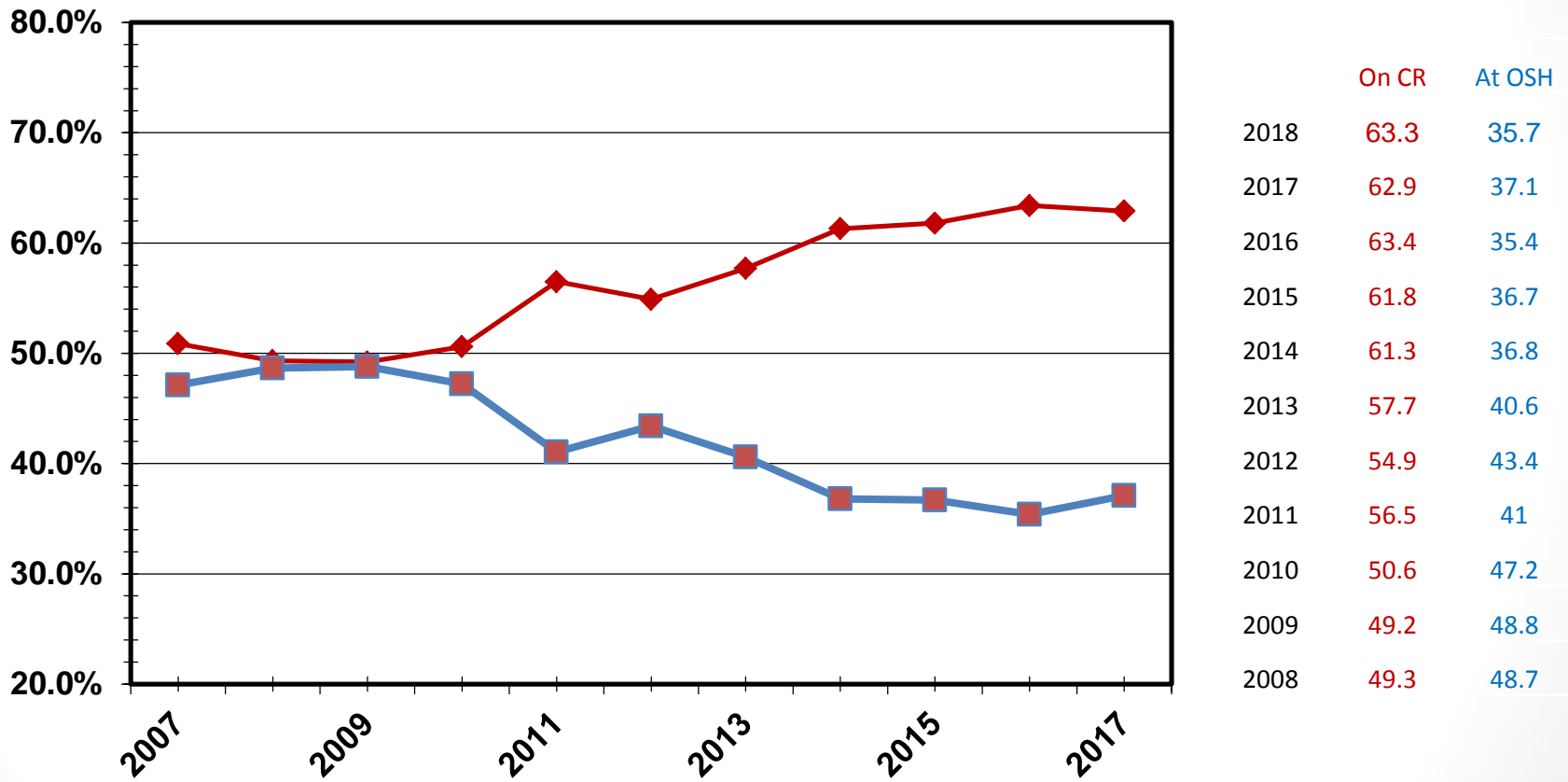
205 GEI Patients at Oregon State Hospital

364 PSRB patients on conditional release

6 Abscond status or Incarcerated

575 TOTAL

Percentage of GEI Clients on Conditional Release vs in OSH



▸ Numbers approximate as of 12/31 of given year

Conditional Release Comes about in 2 Ways

- From the Courts
- From OSH: released by PSRB after period of treatment at the State Hospital

Five Layer Review/Evaluation for Conditional Release from OSH

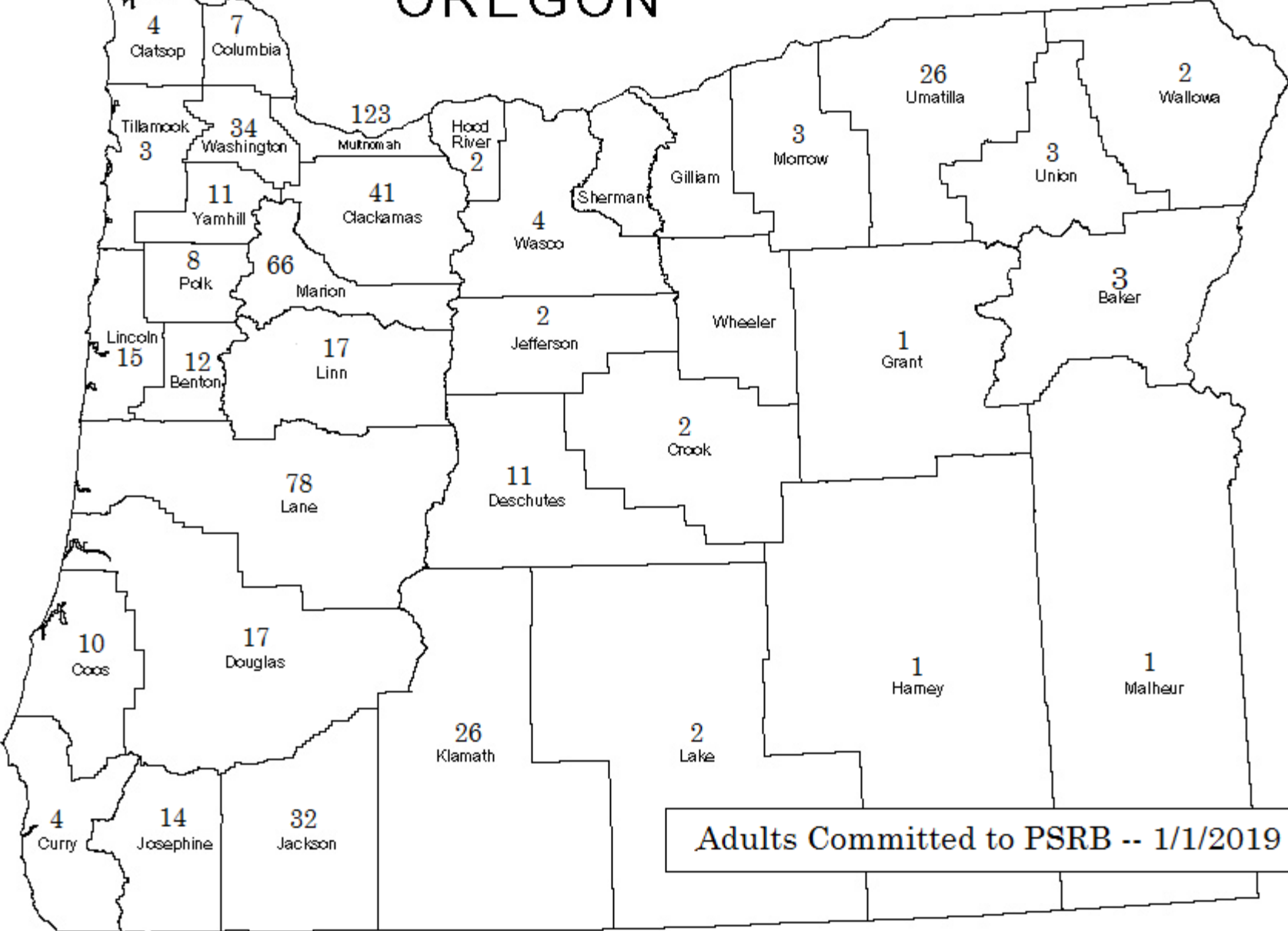
- A person will not be placed on conditional release until the following proposed conditional release plan has been supported by the:
 - Hospital treatment team
 - Hospital Forensic Risk Review
 - Community Provider
 - County Mental Health Agency
 - PSRB– Final Approval, at a full hearing with representation

Types of Residential Placements Available for PSRB Clients

- Secure residential treatment facility (SRTF) – 19%
- Residential treatment facility/home (RTF/RTH) – 37%
- Adult Foster Homes – 8%
- Semi-Independent/Supported Housing (SH) - 13%*
- Independent living - 23%

*Includes 5% Intensive Case Management

OREGON



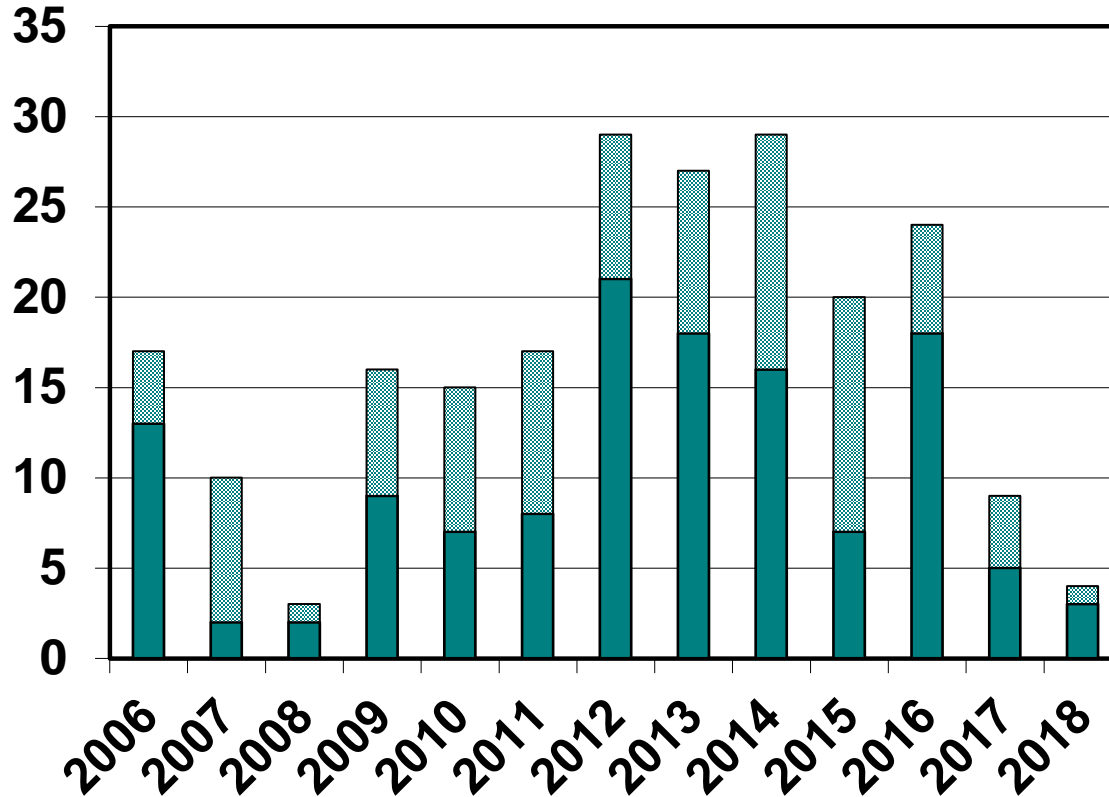
Adults Committed to PSRB -- 1/1/2019

A “Day in the Life” of a PSRB patient on Conditional Release

- 20 hrs./week structured activity provided by Community Mental Health Agencies, including:
 - Individual therapy
 - Substance abuse/self-help groups
 - Random urinalysis testing (UAs)
 - Peer support groups
 - Skills training (public transportation, money mgt., cooking, laundry, shopping)
 - Group therapy
 - Employment
 - College

GEI Early Discharges

(by Year)



- ▶ 2018* (MD=3) (D=1)
- ▶ 2017* (MD=3) (D=5)
- ▶ 2016* (MD=18) (D=6)
- ▶ 2015* (MD=7) (D=13)
- ▶ 2014* (MD=16) (D=13)
- ▶ 2013* (MD=18) (D=9)
- ▶ 2012* (MD=21) (D=8)
- ▶ 2011 (MD=8) (D=9)
- ▶ 2010 (MD=7) (D=8)
- ▶ 2009 (MD=9) (D=7)
- ▶ 2008 (MD=2) (D=1)



- ▶ No QMD = Client has no qualifying mental disorder
- ▶ No Danger = Client no longer poses a substantial danger to others
 - ▶ *Includes SHRP discharges
- ▶ 1/1/2012 - GEI clients split between PSRB and SHRP
- ▶ 6/30/2018 - All GEI clients returned to PSRB jurisdiction

Adult Recidivism Rate

Percentage of Clients on Conditional Release Convicted
of a New Felony or Misdemeanor as of 1/29/2019

	Adults on CR*	New Felonies or Misdemeanors	Percentage
2011	483	2	0.41%
2012	485	3	0.62%
2013	457	5	1.09%
2014	458	2	0.44%
2015	446	2	0.45%
2016	442	0	0.00%
2017	436	1	0.23%

Average = .46%

*CR's in effect during the calendar year

Results

- Continued to fulfill mandate to protect the public as evidenced by a cumulative 0.47% adult recidivism rate since 2012 through 2017
- Decreased early discharges by 86% since 2014 through changes in legislation and increased education at the front door
- Maintained 99% of adult patients safely in the community despite having a higher percentage of patients on conditional release than last biennium
- Continued reduction of “conditional release ready” patients residing in the Oregon State Hospital (35 as of January 2019)
- Conducted 596 hearings across 45 hearing days in 2018.

Major Initiatives in 2019-21

- Continue solid public safety record
- Manage increased percentage of patients on conditional release
- Manage increased PSRB Civil Commitment census
- Collaborate with OHA/DHS and OSH to improve OSH “back door” barriers to conditional release
- Collaborate with partners to examine post-jurisdiction recidivism
- Collaborate and educate to continue to manage “front door” to PSRB
- Increase standardization and use of best practices throughout PSRB programs
- Integrate trauma-informed practices into PSRB operations
- Develop agency strategic plan
- Track “near revocations” to better identify resources needed to better maintain conditional release plans and decrease unnecessary OSH placement.
- Onboarding new Adult Panel Board Member, Psychologist in June 2019
- Operate new sex offender reclassification and relief program

Challenges for the Board

- Reductions in residential placements (11 PSRB closures)
- KEPRO denials
- Substance use availability, increased relapses, limited addictions treatment
- Stigma and misconceptions continue to impact housing and employment (background checks)
- Lack of affordable, permanent housing creates bottlenecks
- Negative impact of inaccurate reporting in the media
- Addressing the widely disparate expectations of stakeholders
- Fulfilling public records requests for medical records in a timely manner

2019 Proposed Legislation

Due to a change in directorship, the PSRB did not propose any legislation for the 2019 long legislative session.

2017-19 Governor's Recommended Budget

- Proposed Service Level- \$3.229 million GF/11FTE
- These funds can provide the Board the resources for staff to manage their current workload within a 40 hour work week
- Does not allow for any significant increase in workload or responsibilities that might result from new legislation

Questions?