



Early Care and Education: Early Learning Division

Presentation for the House Education Committee

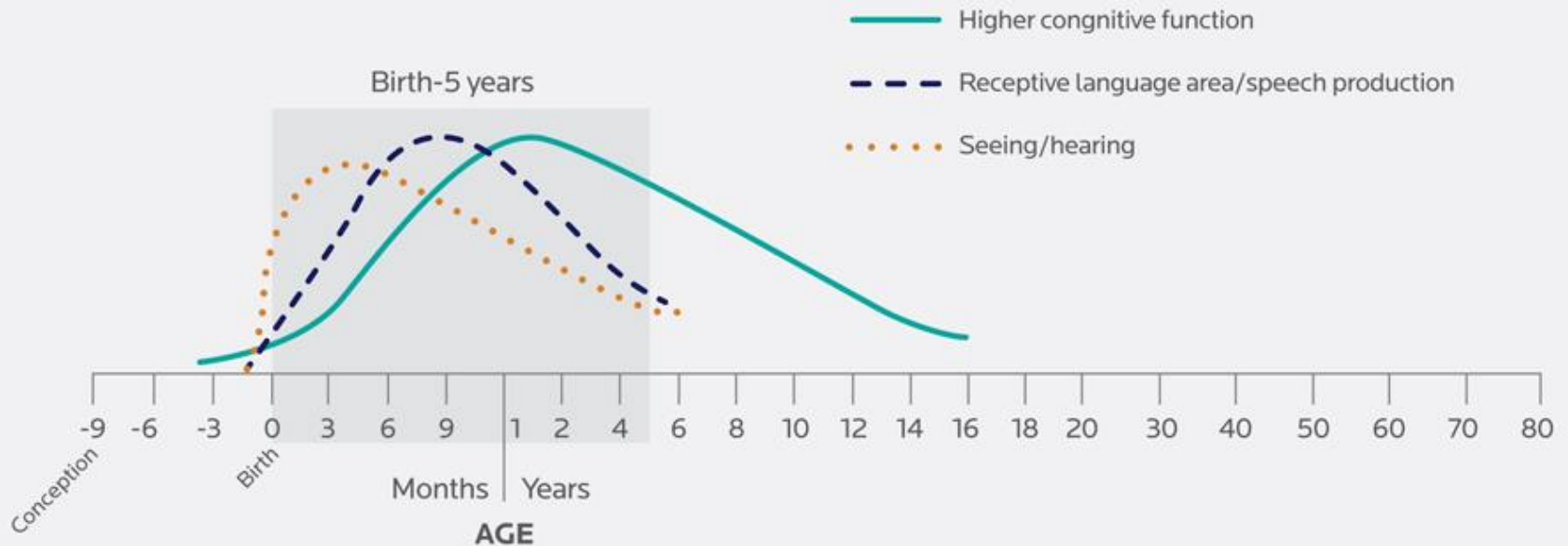
MIRIAM CALDERON, EARLY LEARNING SYSTEM DIRECTOR

January 28, 2019

Learning begins well before Kindergarten

The science of child development underscores the importance of the first 2,000 days of childhood.

Figure 1. Synapse formation in the developing brain^{vii}



Early Care and Education Sector

Mixed Delivery System

Certified
Child Care
Center

Certified
Family Child
Care Home

Registered
Family Child
Care Home

Head Start

Family Friend
and Neighbor
Caregivers

Public Schools

Private
Schools

Early Care & Education Sector

High-quality experiences
and environments that
promote children's
learning and
development

Knowledgeable, skilled,
and compensated early
childhood workforce

Supports for
parents/primary
caregivers

Access to Quality ECE for Infants & Toddlers

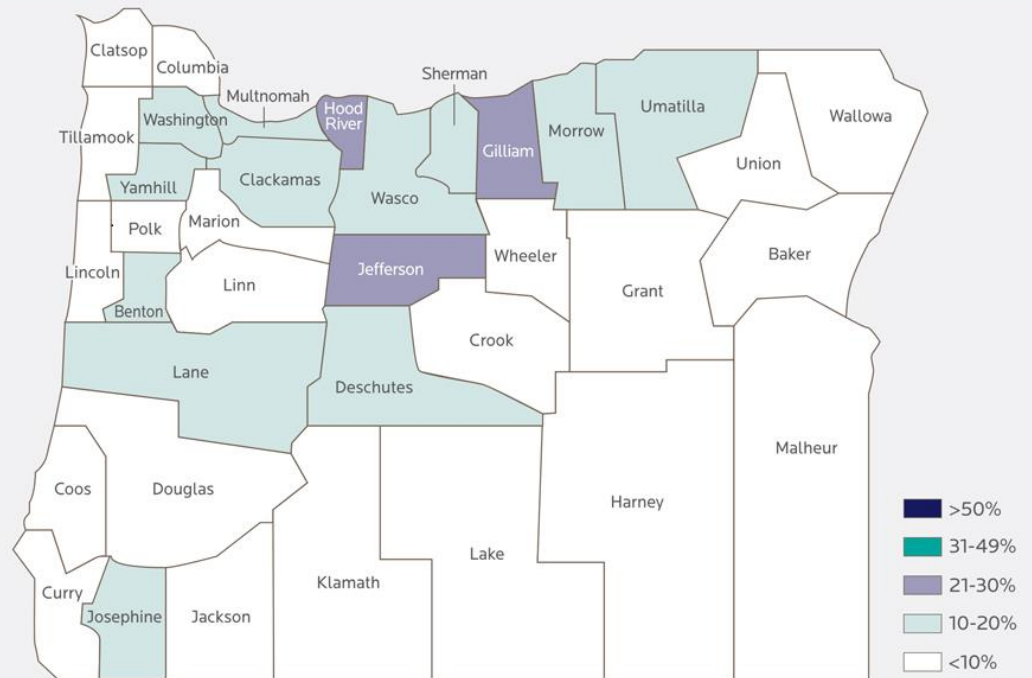
Early Head Start

- Families in poverty
- Serve 2,000 infants/toddlers (15% of all eligible children)

Baby Promise (Pilot)

- Low-income families
- Pilot to serve 250 infants and toddlers

Figure 6. Percent of Oregon young children 0-3 with access to regulated child care^{xvii}



Access to Quality ECE Programs for Preschool-Aged Children

Oregon PreK/Head Start	Preschool Promise	<i>Early Childhood Special Education</i>
Families <100% FPL; 3-5 year olds	Families <200% FPL; 3-5 year olds	<i>Children w/ Developmental Delays and Disabilities</i>
12,000 children	1,300 children in 9 Hub Regions	9,100 children
30,000 children unserved		<i>Less than 10% of children with moderate need receive adequate service levels</i>

Transitions from ECE to K-12 for Children and Families

Kindergarten Partnership and Innovation Fund

Figure 11. Benefits of Kindergarten Readiness Partnership and Innovation fund (KPI) programs^{xxiii}



ECE Quality Supply Building

Child Care Licensing

- 120,000+ children age 0-12 in programs across the state
- Approximately 4,000 licensed programs
 - Registered Family Child Care Homes
 - Certified Family Child Care Homes
 - Certified Child Care Centers
- Average of 2,000 license-exempt providers serving ERDC-enrolled children (i.e., Regulated Subsidy)

Spark: Quality Supply

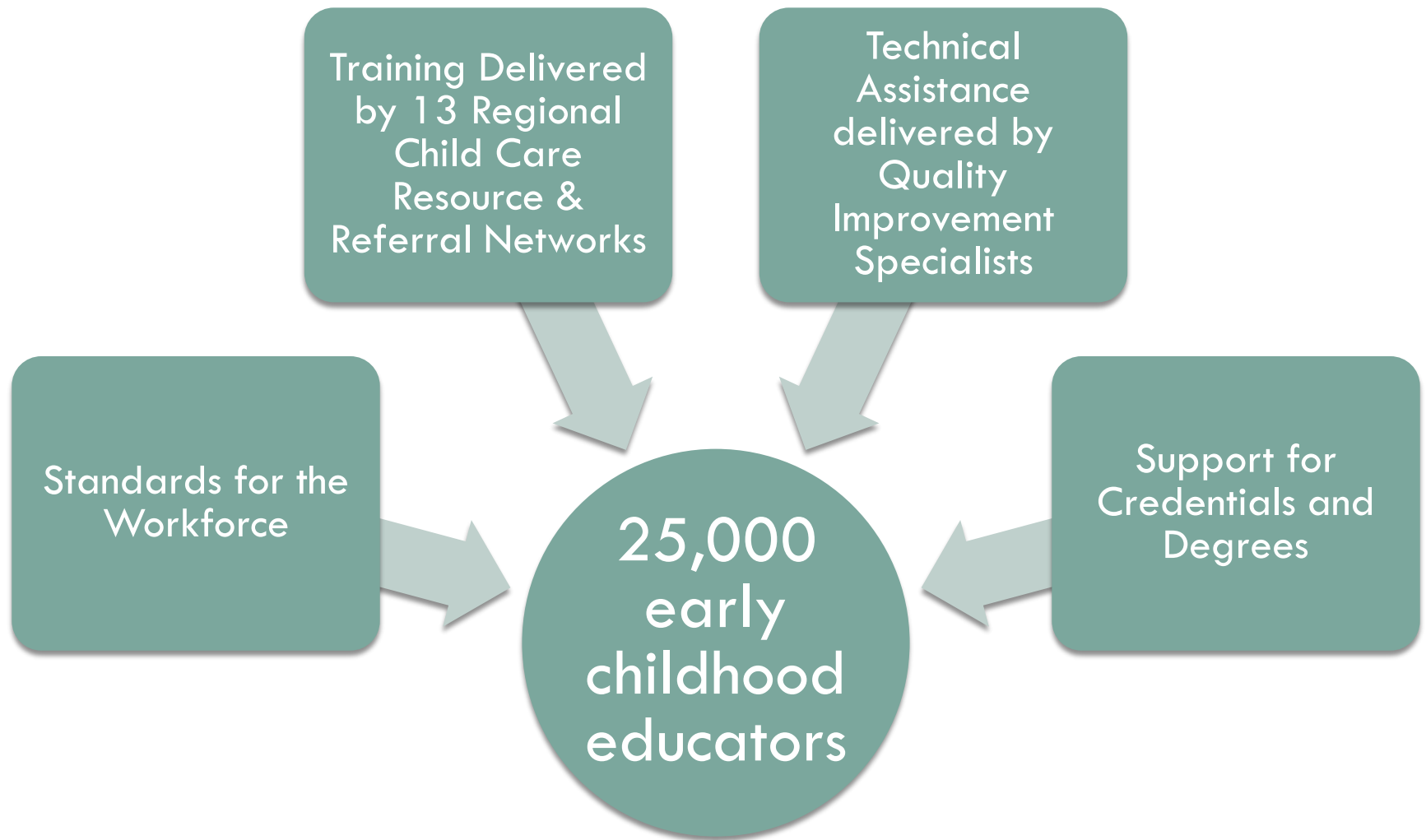
A provider's home prior to participation in technical assistance through Spark



After Supports through Spark



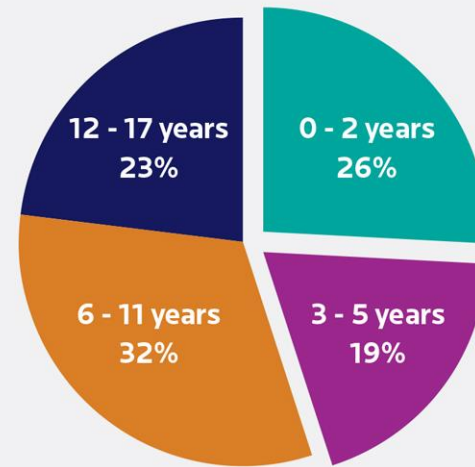
Professional Development System



Family Support Programs

- Relief Nurseries: Provide therapeutic early childhood classrooms, home visits and parenting supports.
- Healthy Families Oregon: Voluntary home visiting program providing family support and parenting education

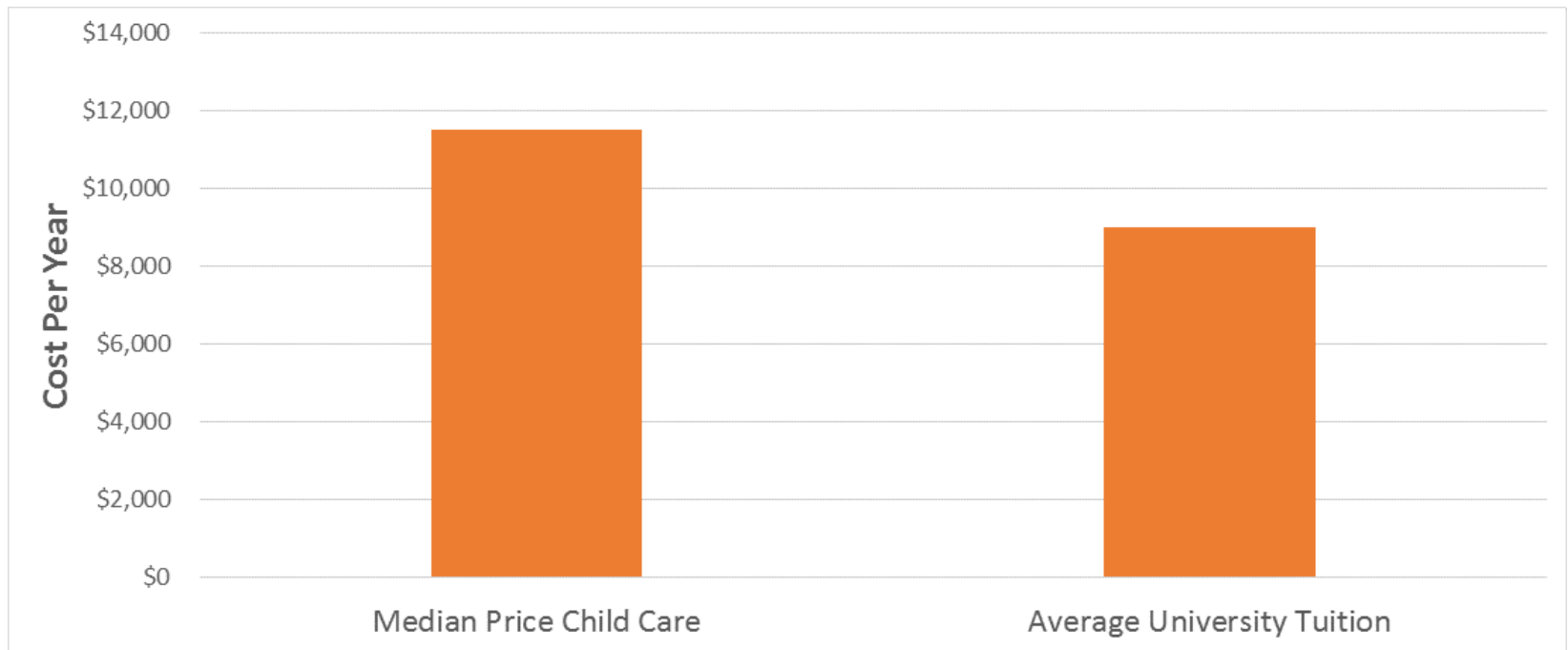
Figure 12. Abused and neglected Oregon children, 2017^{xxix}



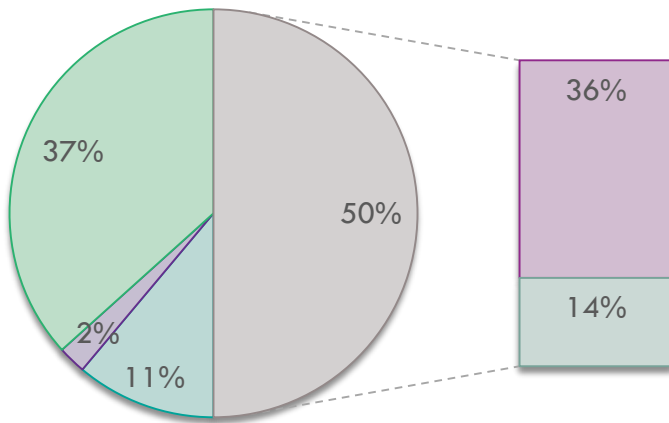
Approximately 5,000 young children under age six every year are abused or neglected.

ECE Affordability for Families

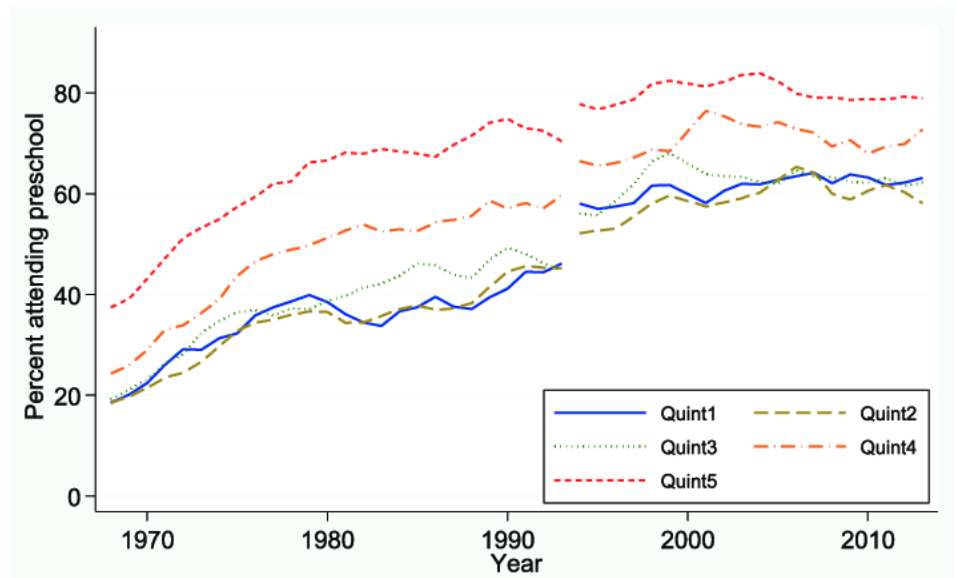
The median price of child care in Oregon is higher than average college tuition at a public institution



Estimating Demand for ECE



- Single parent not employed
- 2-parent neither employed
- 2-parent one employed
- 2-parent both employed
- Single parent employed



Percentage of children enrolled in preschool, by family income quintile nationally: 4-year-olds. Magnuson and Waldfogel, 2013.

Scaling High-Quality

15

- High-quality programs depend on skilled, knowledgeable, and supported educators and administrators who understand:
 - ▣ Child development
 - ▣ Developmentally and culturally appropriate practice
 - ▣ Partnerships with families

Figure 7. Oregon ECE teacher and provider annual workforce turnover^{xix}



Key Budget and Legislative Priorities

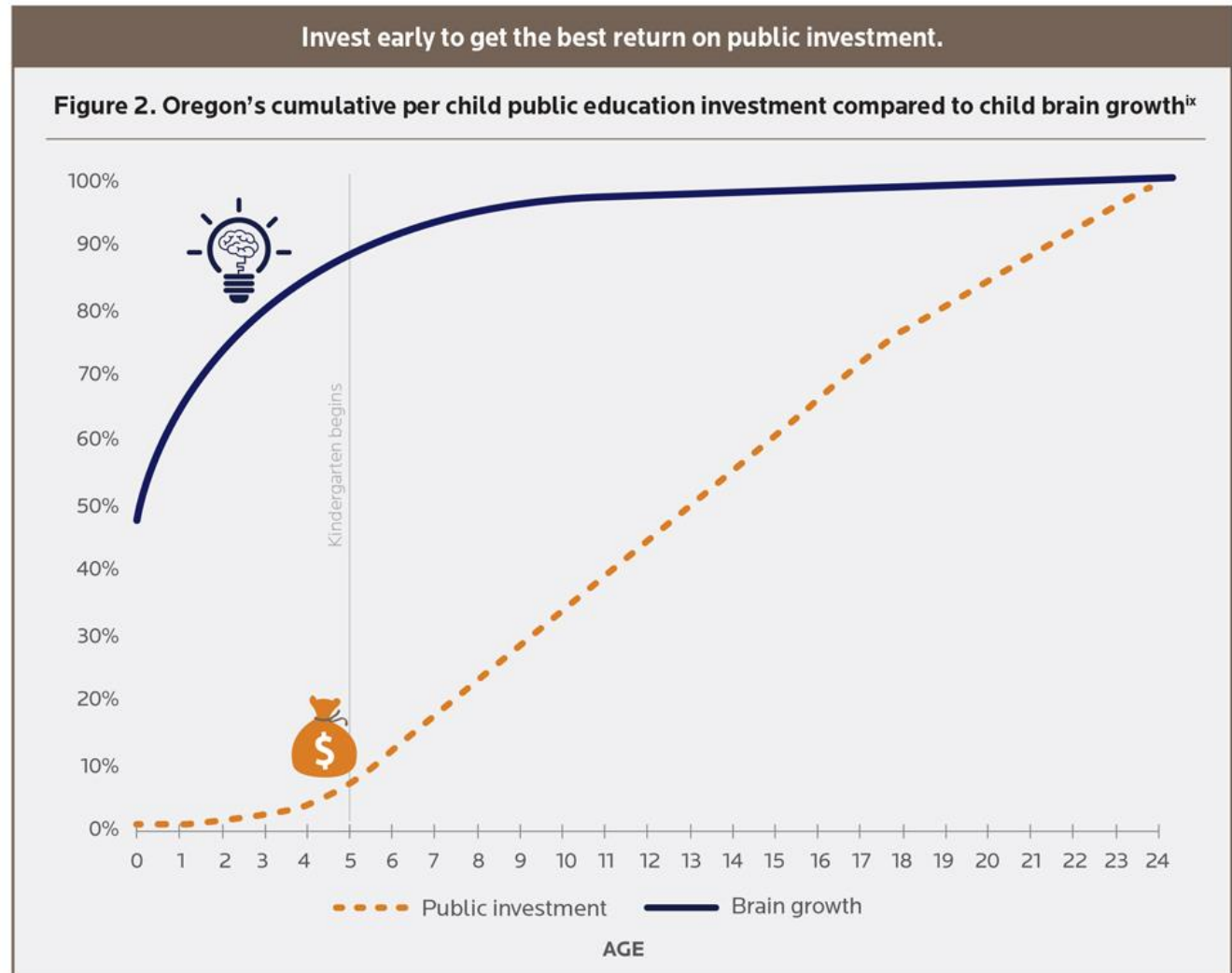
16

- Equity Fund
- Family Support: Parenting Education, Relief Nurseries, Healthy Families Oregon
- Professional Learning
- Program Alignment, Expansion, Capacity
 - *HB2024: Baby Promise*
 - *HB2025: Pre-K*
 - *HB2027: Child Care Regulation*

Public Investment in ECE

17

Less than 10% of combined federal and state investment in children occurs before age 5





Questions?

