

Portland General Electric: **Committed to Oregon's clean energy future**



For more than 125 years, PGE has been powering innovation in Oregon.
Today, we are working with our customers and partners to build a clean,
efficient energy future for generations to come.

portlandgeneral.com/cleanvision

Above: PGE's 450 megawatt Biglow Canyon Wind Farm located in Sherman County.

We are Oregon's largest electricity provider

We serve customers with affordable, reliable and increasingly clean energy, at electricity prices below the national average

1.9 million

people in 51 cities

50%

of state's population

70%

of Oregon's economic output

99.98%

system reliability

PGE has operations in 10 counties

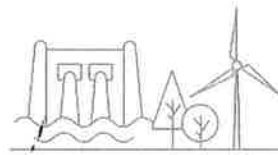


PGE OFFICES, SERVICES AND OPERATION CENTERS

5 in Clackamas County
5 in Marion County
5 in Multnomah County
6 in Washington County
2 in Yamhill County



PGE Service Area



PGE GENERATION ASSETS IN OREGON

5 in Clackamas County
3 in Columbia County
3 in Morrow County
2 on the Deschutes River
1 in Sherman County



PGE-OWNED PUBLIC PARKS AND RECREATION SITES

3 in Clackamas County
1 in Columbia County
4 in Jefferson County

We provide thousands of diverse, family-wage jobs in Oregon



2,900

PGE employees plus nearly 1,000 contractors



\$79,192

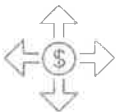
median income for PGE's highly skilled workforce



One of only 5

Fortune 1000 companies in Oregon and one of its largest green energy employers

We grow Oregon's economy



\$2.8 billion

statewide economic output*



8,824

Oregon jobs and \$642 million in labor income*



\$561 million

paid for goods and services from local businesses to support ongoing and new PGE construction activities*

We pay taxes to support government services

\$219 million

in state and local taxes and customer fees

\$56.8 million

in property taxes to 17 counties

#1 taxpayer

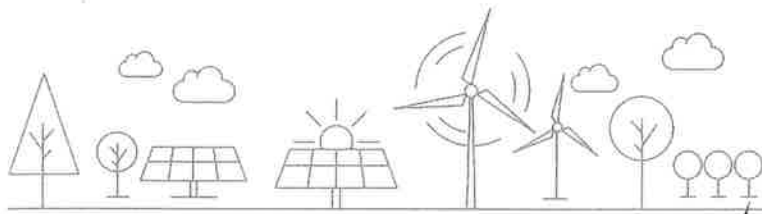
in Columbia, Jefferson, Sherman and Morrow counties; one of the three largest in Washington, Clackamas and Marion counties

*direct, indirect and induced impacts
All figures are based on 2016 data, unless otherwise noted.

We are building a clean energy future

Our clean energy vision

Working with customers to build a fully integrated, modern electricity system, we can help meet Oregon's decarbonization goals while continuing to provide reliable, safe and affordable power.

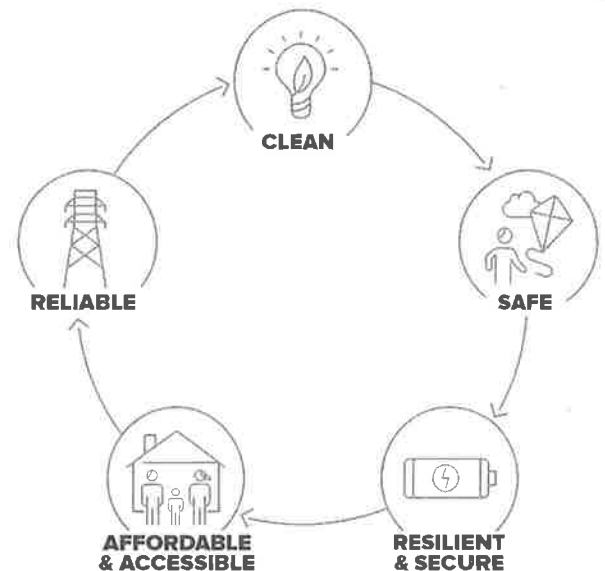


More than 80%

PGE's commitment to reduce greenhouse gas emissions by 2050

\$2 billion

invested in new renewables since 2007



We are national leaders in renewables and energy efficiency



\$712 million

remitted to Energy Trust of Oregon for energy efficiency and renewable energy between 2008 and 2017



#1 every year since 2009

in the U.S. for customer participation in voluntary renewable power programs according to the National Renewable Energy Lab

We protect fish and wildlife



1.2 million juvenile salmon

have been passed downstream on the Deschutes River since 2010, when PGE completed the construction of facilities to enable fish passage



36,500 acres of natural habitat

where PGE and our partners conduct restoration and mitigation work in Oregon



13 parks and recreation sites

maintained by PGE for all Oregonians to enjoy, including 5 sites on public lands



"Electric Avenue" charging stations at PGE's headquarters in Portland.

We're helping to reduce economy-wide greenhouse gas emissions by supporting transportation electrification

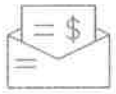
PGE's Electric Avenue at the World Trade Center in Portland is the model for six more Electric Avenues to be built across our service area, improving access to public charging for electric vehicles.

We care about
the communities
where we live
and work



PGE employees, including line crews, dispatchers, system operators, customer service staff and more, work round-the-clock to restore service during winter storms.

Strong advocate for low-income energy assistance and weatherization



\$11.8 million

remitted for low-income bill assistance



\$8.4 million

sent to Oregon Housing and Community Services for low-income weatherization and housing

Caring about our neighbors



\$4.2 million

donated by PGE, employees, retirees and the PGE Foundation to local schools and nonprofits in 2018



45,000 hours

volunteered by employees and retirees in 2018



30 counties

PGE employees and retirees live in 30 of Oregon's 36 counties

Improving outcomes for children and families



\$765,000

given by PGE and the PGE Foundation in 2018 to help close the achievement gap and improve educational opportunities for all students



\$235,000

provided in PGE Foundation grants in 2018 to combat homelessness



PGE lineman Leo Key lowers tools to a crew in an underground vault as they work on the power grid in downtown Portland.



Bilingual customer service representative Cristina Flores answers a customer's question at a PGE community office.