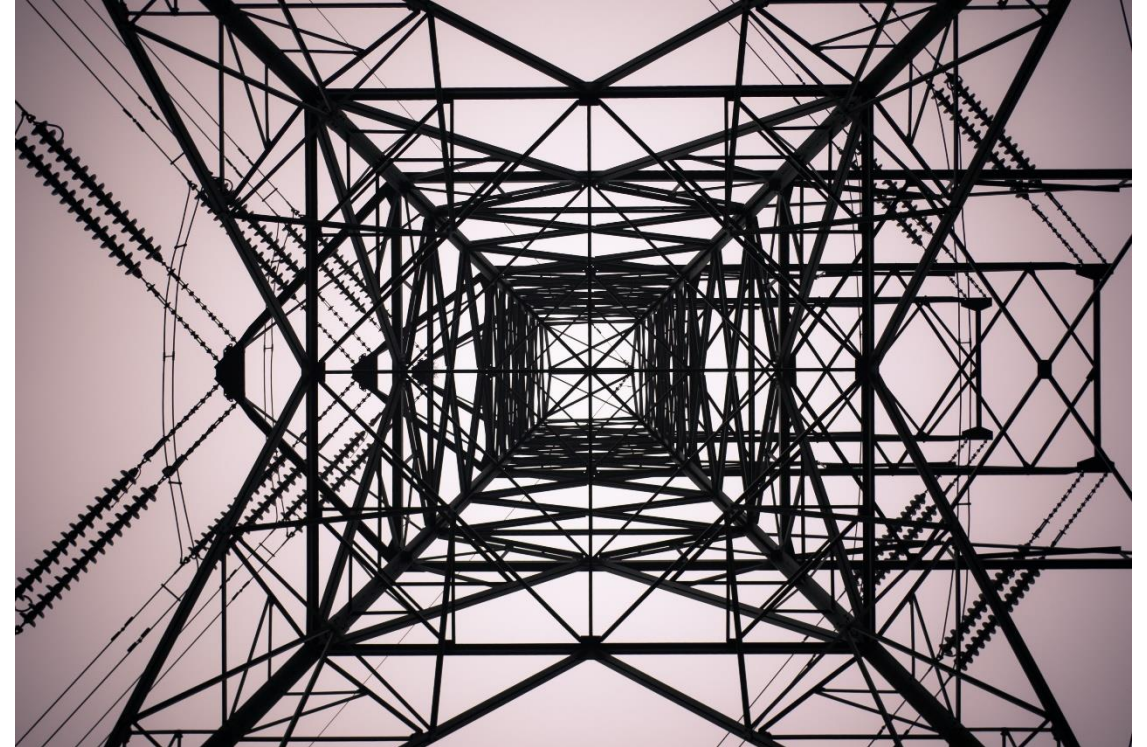


Pacific Power 101

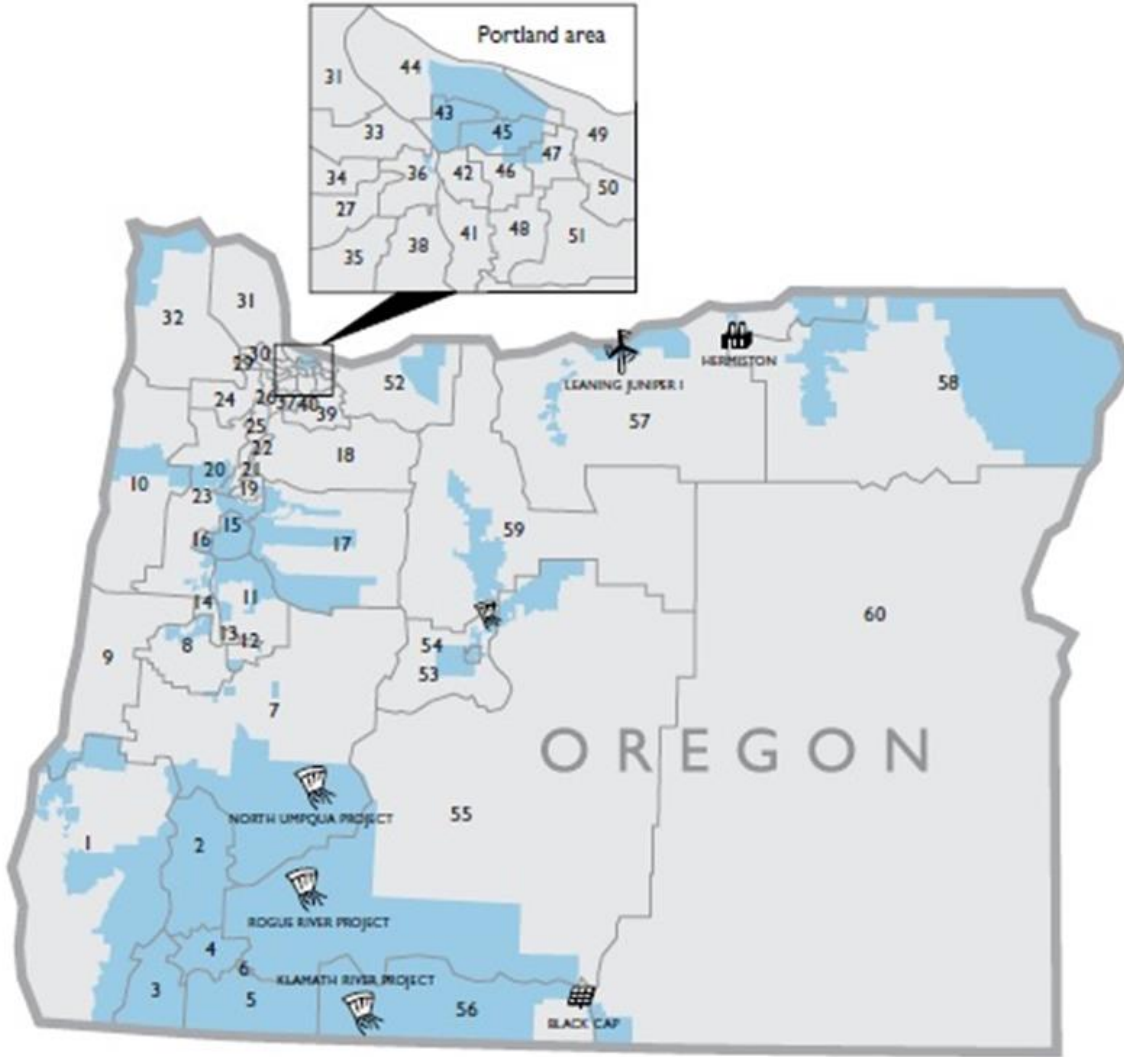


About Us

- Pacific Power is the retail business unit of PacifiCorp
- Formed in 1910
- Started from small electric companies in Astoria and Pendleton in Oregon, and Yakima and Walla Walla in Washington
- PacifiCorp is headquartered in Portland, Oregon and serves 1.9 million total customers
- Pacific Power serves 763,988 customers in Oregon, Washington, and California
- 1,953 employees in Oregon, Washington, and California
- Represented workers are in IBEW 125 and 659, and UWUA 197



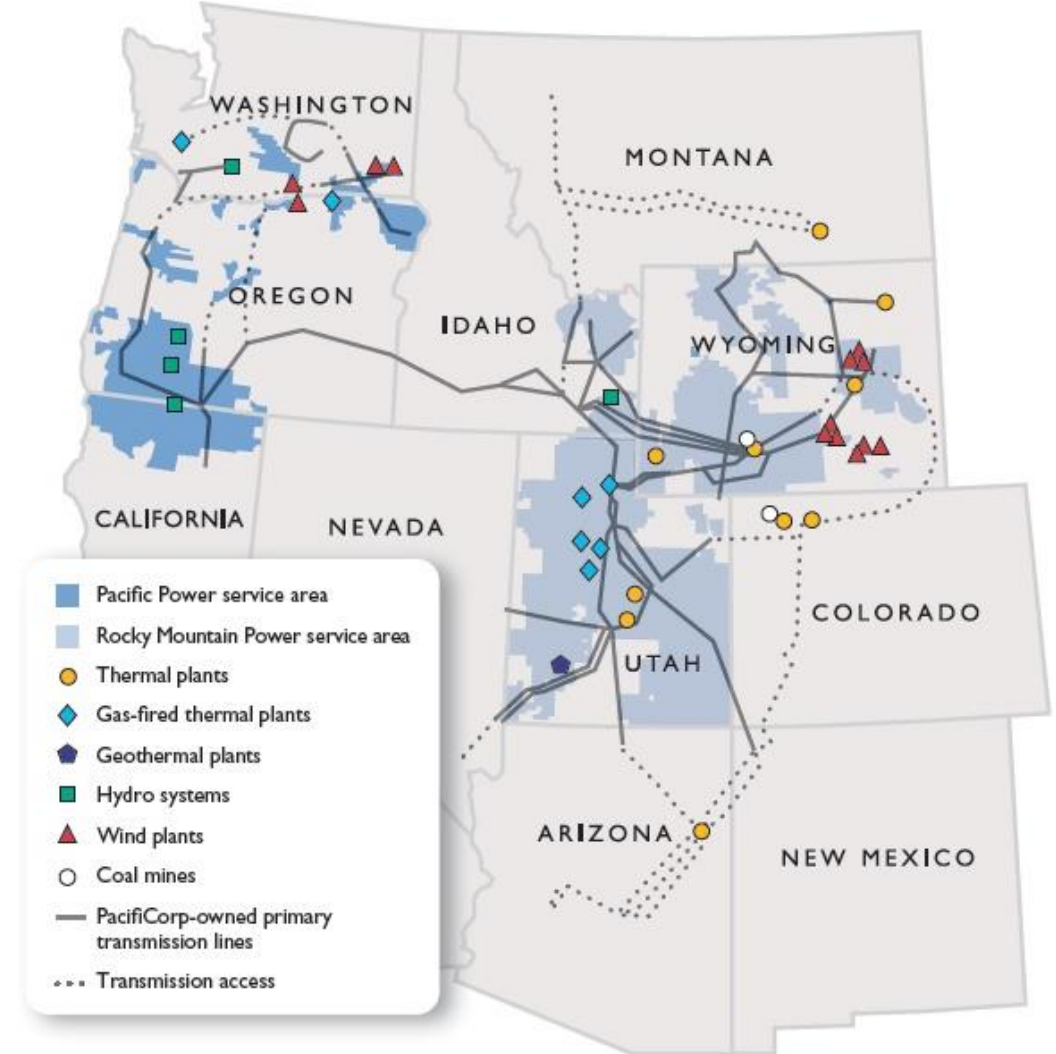
Pacific Power Customers Across Oregon's House Districts



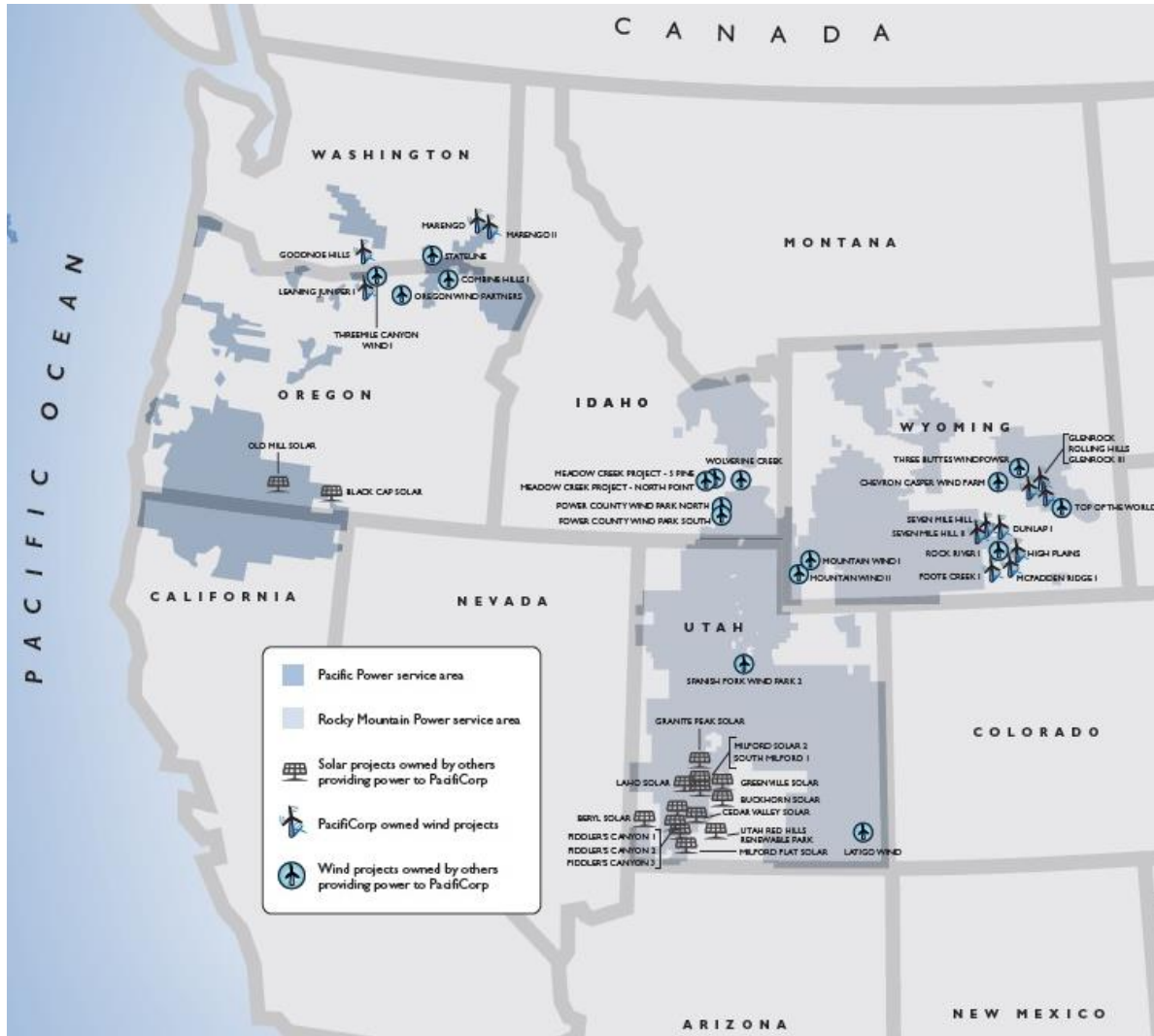
- Over 587,000 customers in Oregon
- Second largest electric utility in Oregon
- Largest rural electric provider in Oregon

The Company

- PacifiCorp consists of two business units:
 - Pacific Power – Oregon, Washington, California
 - Rocky Mountain Power – Utah, Wyoming, Idaho
- Portfolio generation capacity:
 - 10,887 megawatts
 - 72 generation plants
- Oregon assets:
 - Wind
 - Solar
 - Hydro
 - Natural Gas
- Our top priority is to provide safe, reliable, and affordable power to customers.



Key Features and Issues



- Multi-state cost allocation
- Implementing key Oregon energy policies
 - SB 1547:
 - Coal out of Oregon rates by 2030
 - 50% renewable portfolio standard
 - Electric vehicle pilot launch
- System decarbonization
- Affordability of rates
- Market innovation
 - Energy Imbalance Market

Questions?

