



EARLY CHILD CARE AND CHILD CARE SUBSIDIES

DAVID MANDELL, ACTING EARLY LEARNING SYSTEM DIRECTOR
DAWN WOODS, CHILD CARE DIRECTOR, EARLY LEARNING DIVISION
KIM FREDLUND, SELF-SUFFICIENCY PROGRAMS DIRECTOR

February 16, 2017

Why child care matters

**Supporting
working families**

**Promoting positive
child development**

Partnering to support child care

Department of Human Services

- Employment Related Day Care
 - Subsidies for qualified working families to offset the cost of child care
 - Subsidies for qualified parents enrolled in coursework
 - Subsidies for qualified parents who are self-employed

Early Learning Division

- Licensing
 - Ensuring health & safety of staff and children
- Professional development for providers
- Investments in quality
 - Spark (Quality Rating & Improvement)

Consumer protection for parents

- Licensing and Compliance
 - Background checks
 - On-site health & safety monitoring of all licensed facilities
 - Complaints and public inquiries
- Information to parents
 - 211Info

What is the Child Care Development Fund (CCDF)?

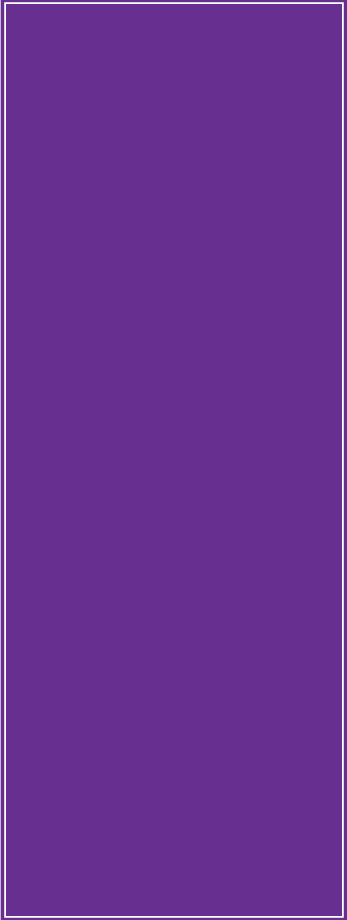
Department of
Health and
Human
Services

Administration
for Children
and Families

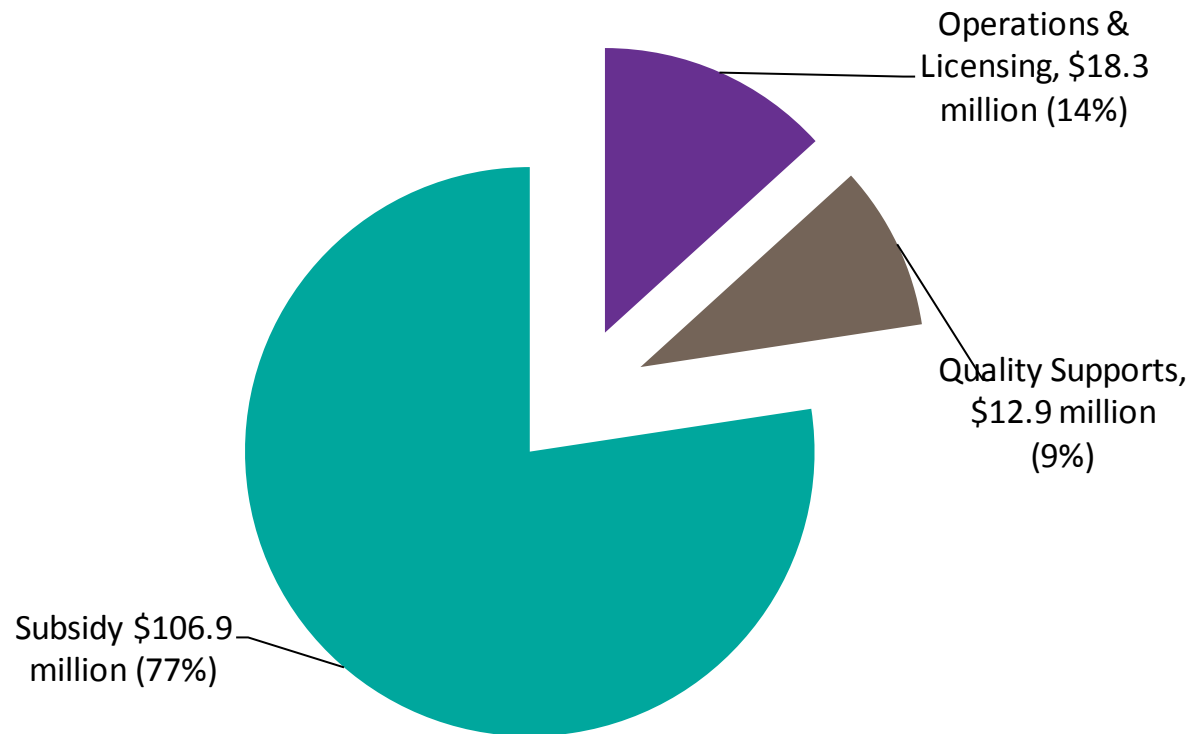
Office of Child
Care

- Early Learning Division is the lead agency of CCDF
- Provides financial assistance to qualified working families to help pay for child care
- Funding to improve the quality and safety of child care
- Supports increasing the supply and availability of child care for all families

CCDF Reauthorization Advancements

- 
- On-site health & safety monitoring for license-exempt provider accepting subsidy
 - New background check requirements
 - New consumer information sharing requirements
 - HB 2259 & HB 2260

Projected CCDF 2017-19 Allocation



Employment Related Day Care Overview

DHS Self-Sufficiency Programs

Kim Fredlund, Director

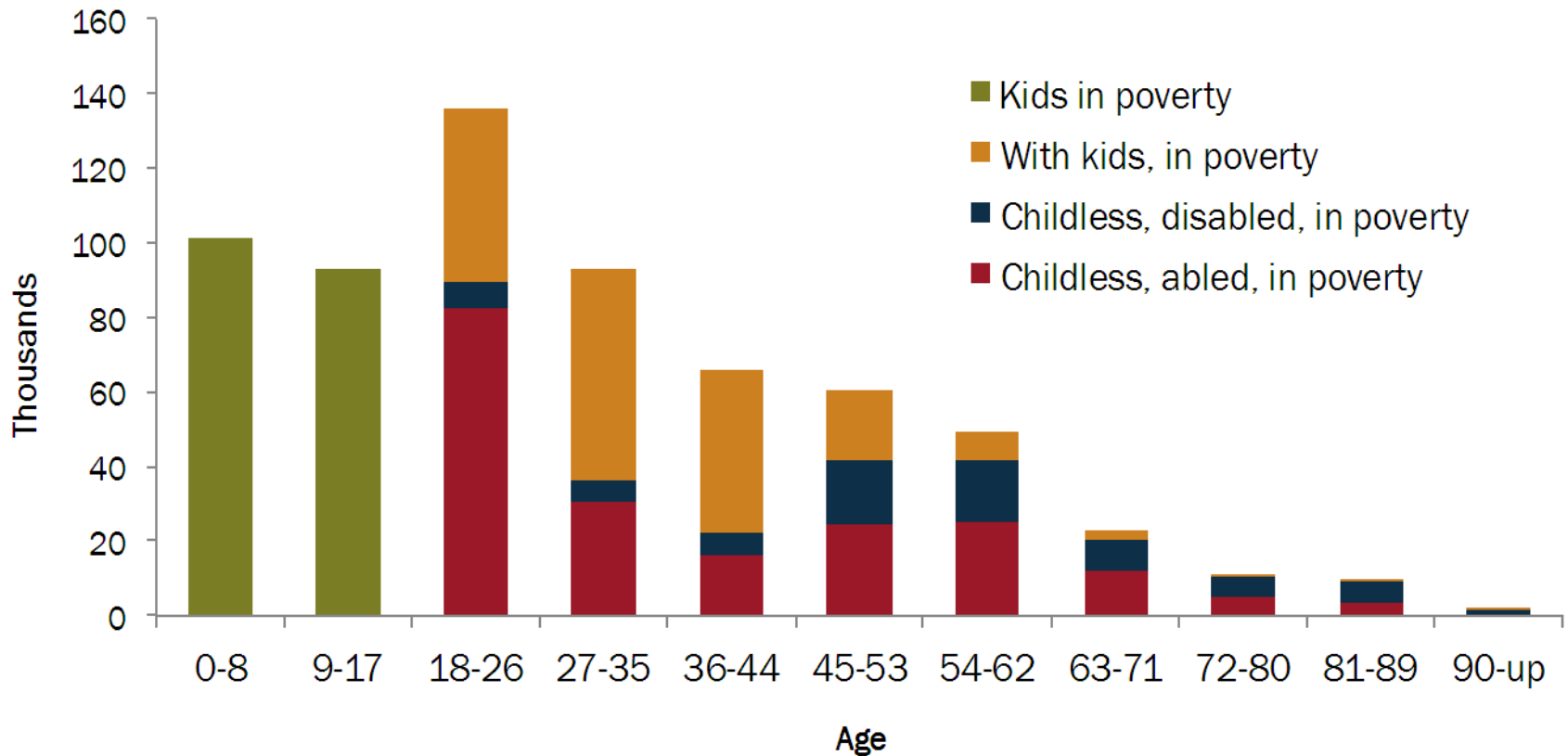


Self-Sufficiency Program's Mission

To provide a safety net, family stability and a connection to careers that guide Oregonians out of poverty

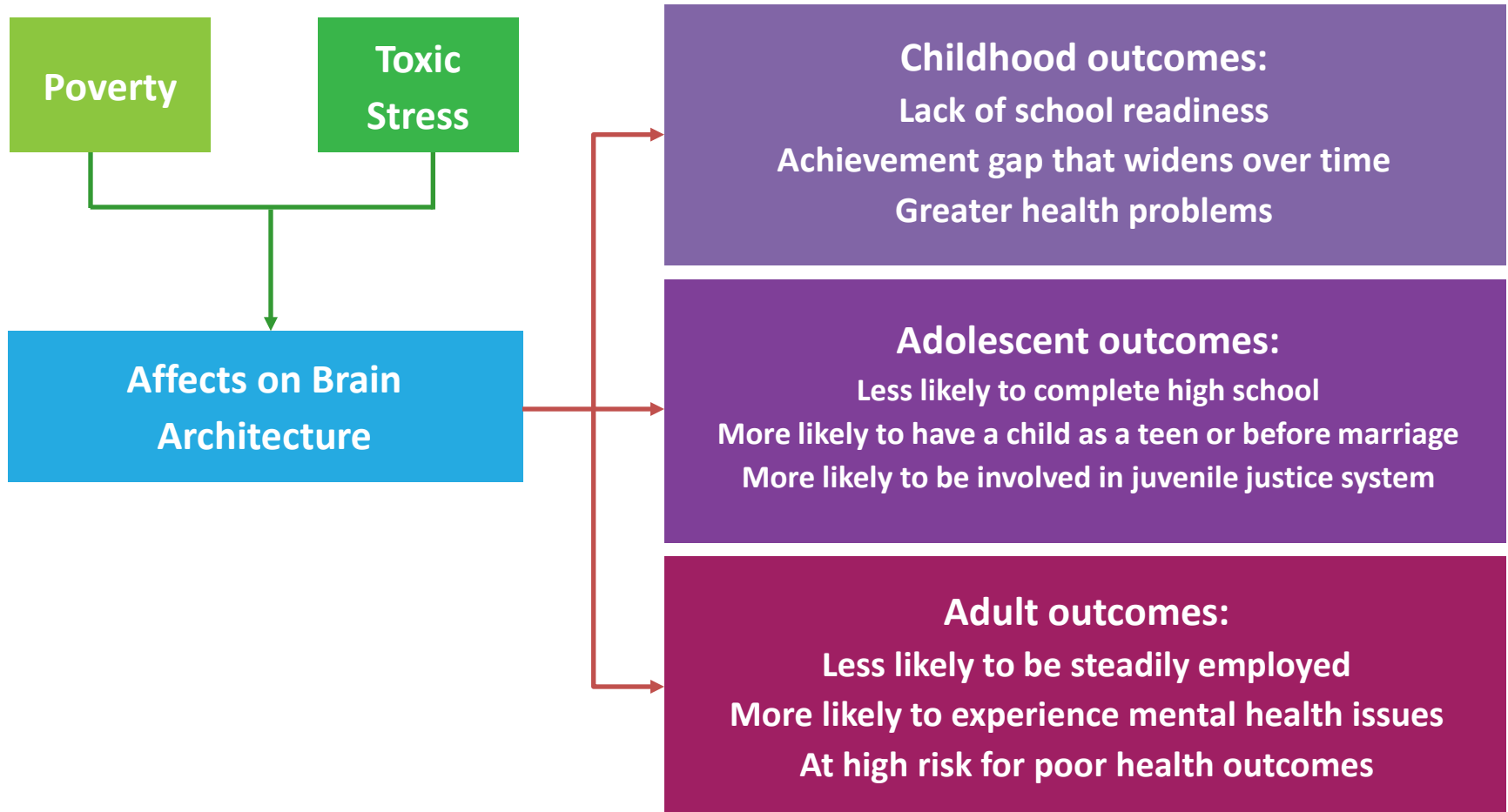


Children and their parents compose almost 60 percent of Oregonians in poverty



Data source: US Census American Community Survey, 2011. Slide source: ECONorthwest

Consequences of growing up in poverty



Employment Related Day Care (ERDC)

Subsidy program that helps qualified working families pay for child care so parents can retain employment.



ERDC Values

Safety
Stability
Access
Quality
School
Readiness

Who We Serve Through ERDC



8,023 families (15,254 children); Most families have a single, working parent and two children



Income under 185% of FPL



Subsidize child care for working parents through payments to providers



Educational hours covered for working parents



Family stability challenges such as non-standard work hours, minimum wage, employment and transportation

Number of ERDC Child Care Providers



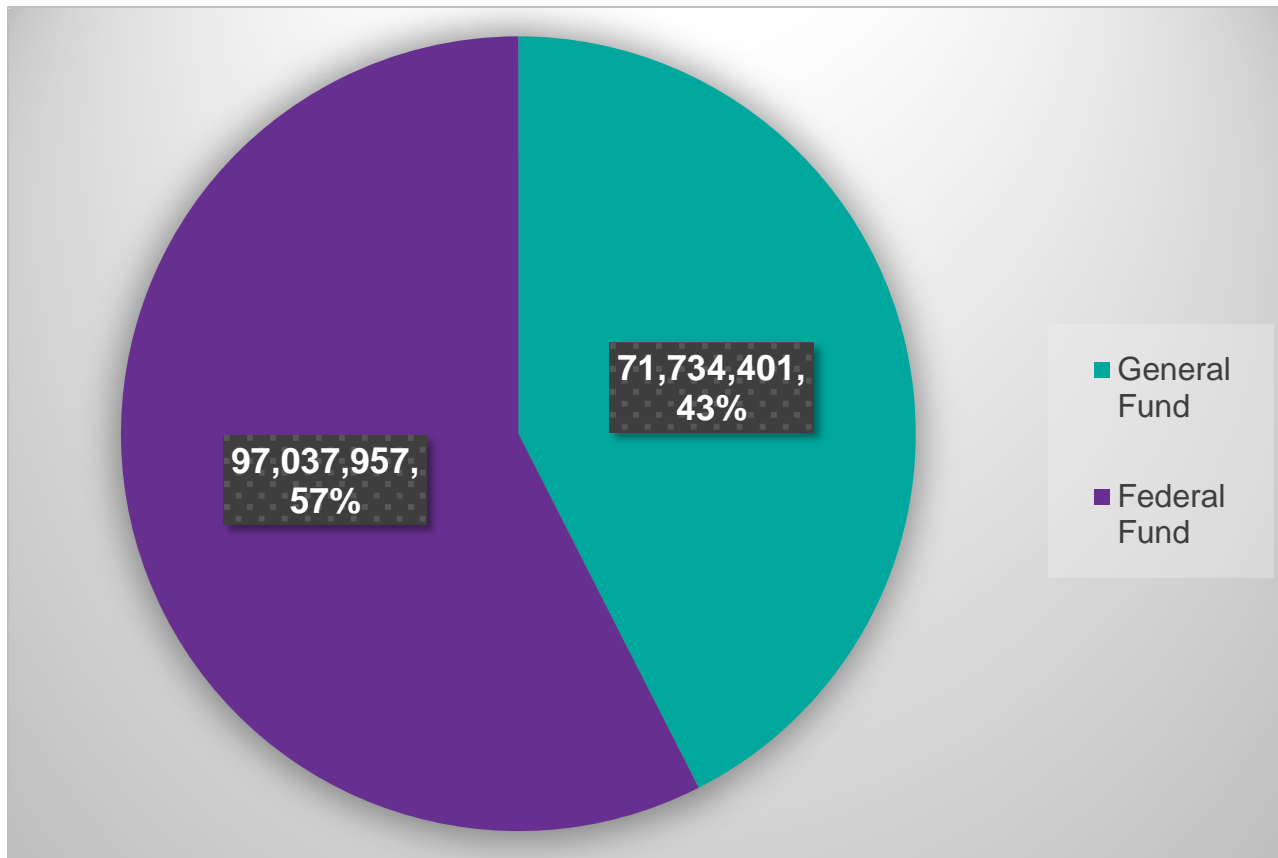
January 2016

Licensed providers: **1,600**
License-exempt providers:
2,516

January 2017

Licensed providers: **1,576**
License-exempt providers: **1,953**

ERDC Funding



Summary

ERDC provides a vital role in assisting working families move out of poverty.