

Department of Human Services

House Early Childhood & Family Supports Committee

Self-Sufficiency Programs

Kim Fredlund, Director, Self-Sufficiency Programs



June 1st, 2017

Presentation overview

1. Self-Sufficiency Programs purpose
2. Employment-Related Day Care (ERDC) overview
3. ERDC Reservation List
4. Calculating ERDC copay
5. Providers
6. Outreach



Guiding people into self-sufficiency; reducing poverty in Oregon

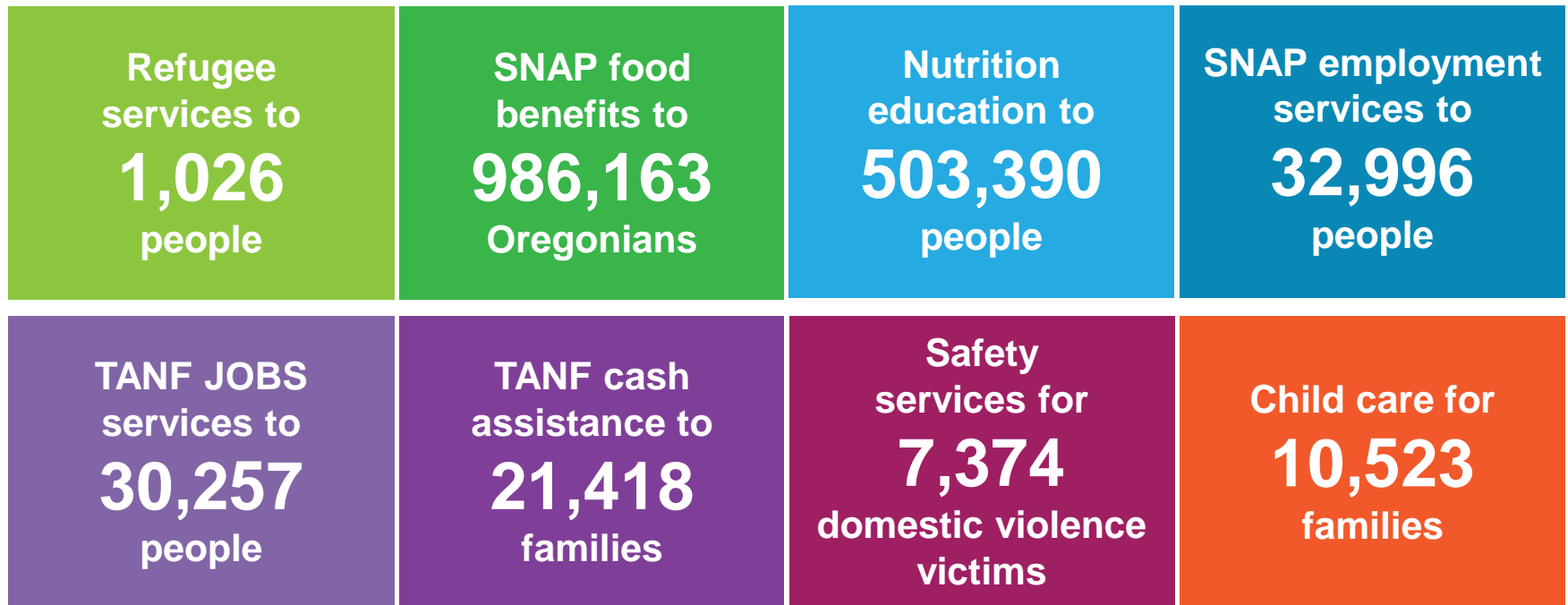


Safety Net

Stability

Connections to Careers

Self-Sufficiency Programs serve 1.2 million people annually; many through more than one program



Employment-Related Day Care (ERDC) overview

ERDC is a subsidy program that helps low-income, working families pay for child care so parents can retain employment.

Families Served

8,023 cases
15,254 children

Eligibility

Income must be
below 185%
of the Federal
Poverty Level



Benefits of quality child care

- Parents experience more success when their child care is stable and consistent and they know their children are in a safe and healthy environment.
- A quality child care setting offers a variety of child development activities important to brain development and lifelong learning.
- Children can thrive when they have access to quality care that nurtures their learning and development and better prepares them to succeed in school and later in the workforce.
- The first few years of life are the most critical in determining a child's intellectual, emotional, and social development.

Total Program Funding

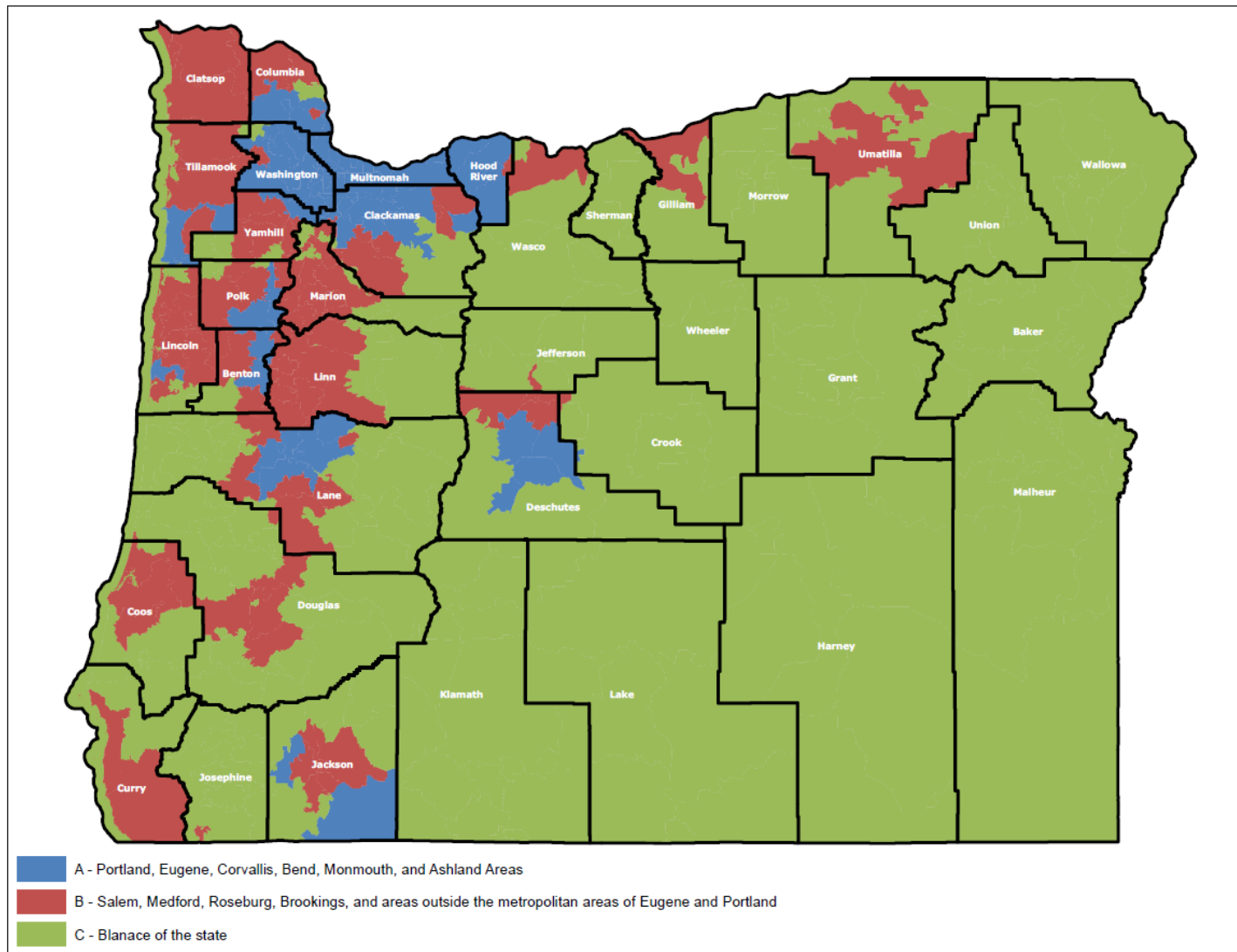
2015-2017 Biennium Funding:

- State General Fund \$71,734,401
- Federal Child Care Development Fund \$97,037,957

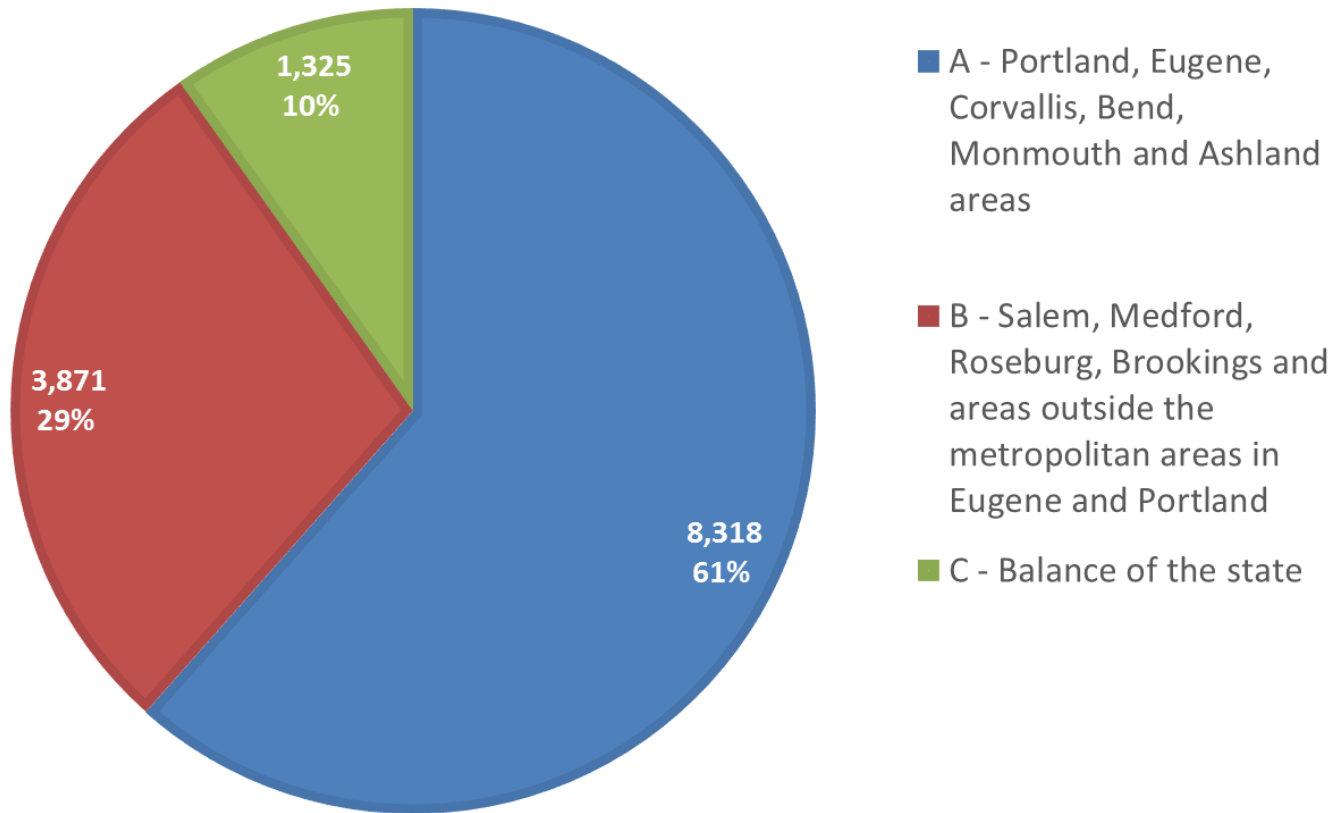
Total Funding: \$167,581,370

Number of families	Additional funding needed
100	\$1,893,600
300	\$5,650,800
500	\$9,418,000

ERDC Group rate areas



**NUMBER OF CHILDREN SERVED THROUGH SUBSIDY
JANUARY 2017 SNAPSHOT**



Group rates per child per month and total funding allocation for each group

January 2017				
Rate Area	Total Children	Total Cost		Payment per Child
A	8,318	\$	5,661,124.29	\$ 680.58
B	3,871	\$	1,757,722.56	\$ 454.07
C	1,325	\$	540,484.65	\$ 407.91

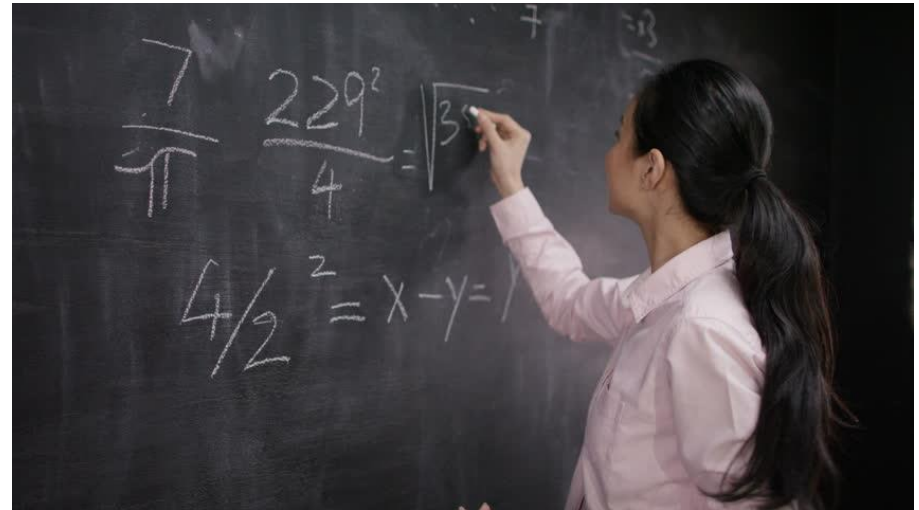
How the ERDC Copay is Calculated

Families at or below 50% FPL

Assigned the minimum copay or 1.5% of the monthly countable income plus 10% (whichever is higher).

Families over 50% FPL

The copay is determined as a percentage of monthly income.





Example Family at or below 50% FPL

- Family of two
- Earning \$500/month
- Copay \$27/month



Example Family over 50% FPL

- Family of two
- Earning \$1,500/month
- Copay \$184/month

ERDC challenges

- The way we manage the budget through reservation list
- Provider availability
- State reductions
- Program awareness

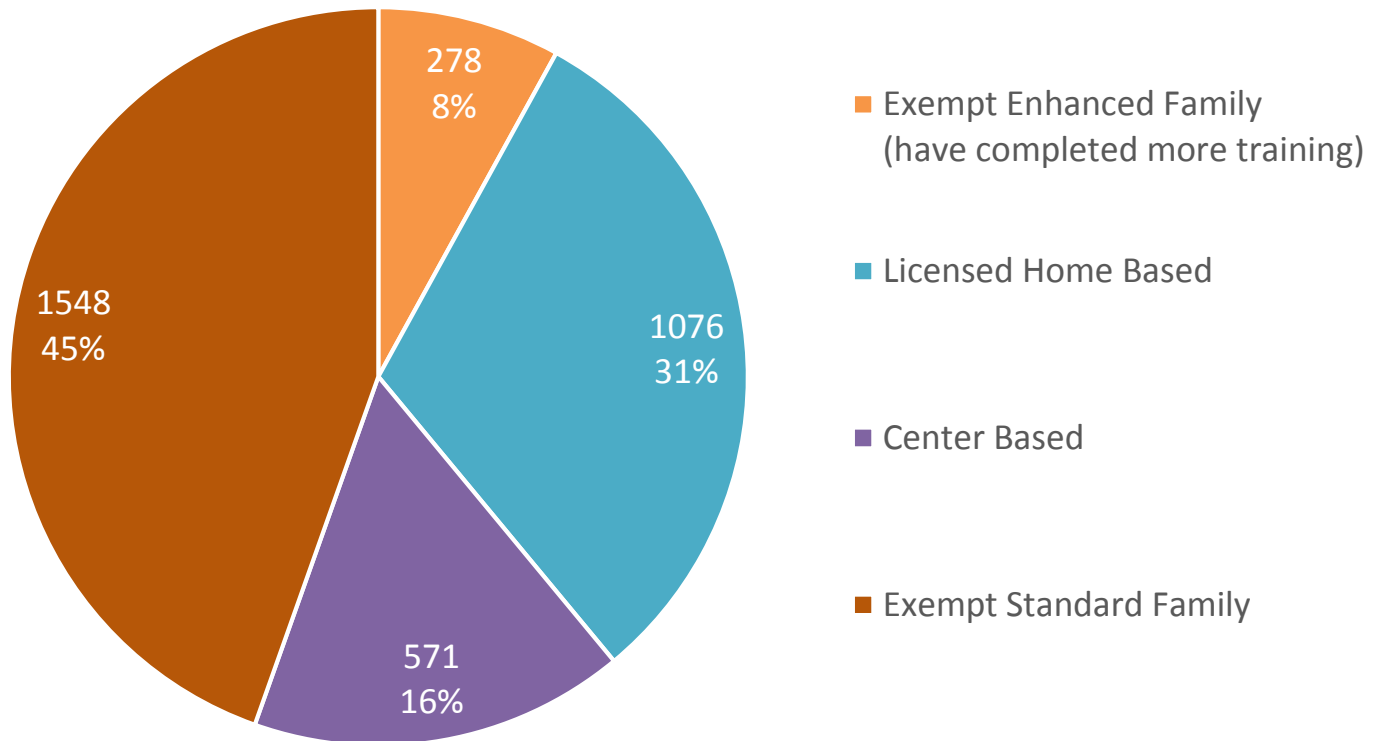
Reservation list effect on the ERDC caseload



Red = periods reservation list implemented

Green = periods reservation list deactivated

DHS providers at a glance



Star-rated ERDC providers

Group	3 Stars	4 Stars	5 Stars
Group Area A	65	19	46
Group Area B	48	7	14
Group Area C	15	2	11

Requirements for non-relative providers to be on the DHS list

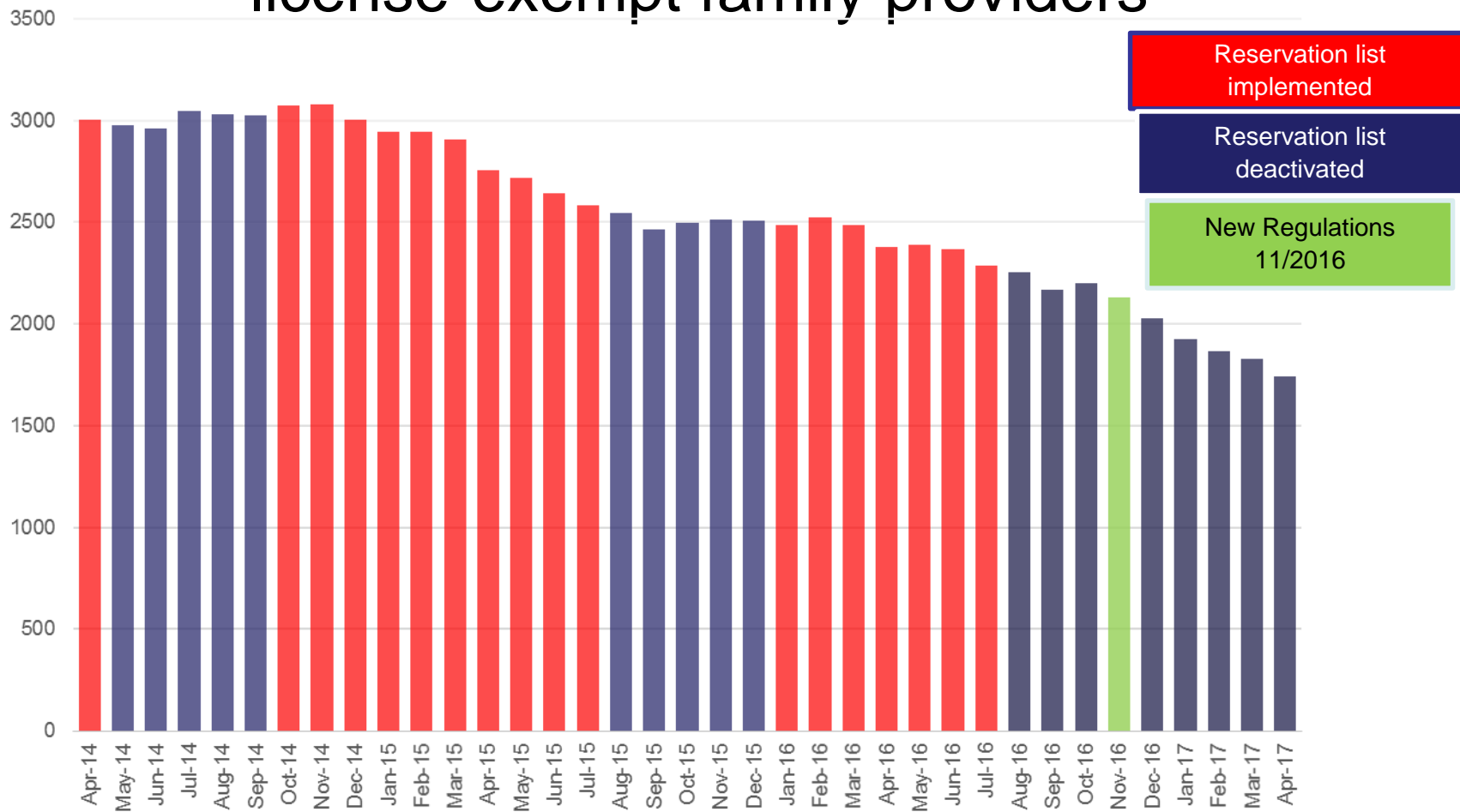
Prior to November 2016

- Pre-service two hour online Health and Safety class
- Child Care Provider Listing form
- Background check with fingerprints on request
- Two hour in-person orientation within 90 days of DHS approval

After November 2016

- Pre-service two hour online Health and Safety class
- Pre-service four to six hour CPR and First Aid Certification in-person
 - Provider expense \$35 - \$65
- Pre-service Recognizing and Reporting Child Abuse and Neglect online class
- Child Care Provider Listing form
- Background check with fingerprints (required as of Jan. 2017)
- Two hour in-person orientation within 90 days of DHS approval
- Six hours of additional training within each two year approval period

Impact of reservation list and new regulations on license-exempt family providers



2016 Federal Rule Change

Federal:

The Child Care and Development Block Grant Act of 2014 recommended that states offer incentive payments to quality rated providers.

State:

HB 2015 stated that subsidy recipients who choose Spark rated child care providers may qualify for lower copayments.

What we are doing in the future

- Reviewing co-pay strategy.
- Reviewing ERDC reservation strategy.
- Learning from other states with similar systems.
- Discussing potential changes for improvement:
 - Pulling randomly selected families from the list each month.
 - Or pulling families on the list the longest each month.

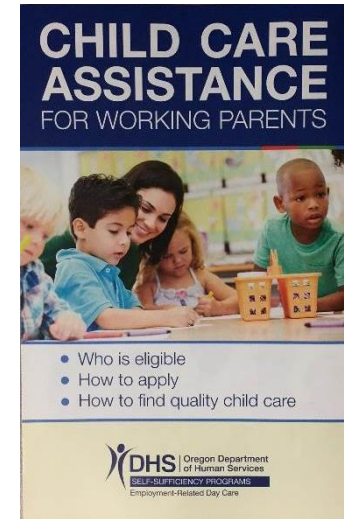
Outreach

Parent outreach

- In DHS offices
- With partner networks
- Direct mailings
- Media release

Provider outreach

- Currently developing more coaching and resource materials



Thank you!

Stay connected with us

www.oregon.gov/dhs

