



# Public University State Programs: Impacting Oregon's Communities

***Joint Ways & Means Subcommittee on Education***

May 22, 2017

# Background on Public University State Programs

- In 2013, the Oregon Legislature separated the Educational & General appropriation for universities into two new categories: Public University Support Fund (PUSF) and State Programs
- State Programs are institutes, centers, and programs that address economic development, natural resources, and other issues, providing public service across the state
- State Programs are different than the Statewide Public Services, such as the Agricultural Experiment Station, Extension Service, and Forest Research Laboratory
- State Programs are fully integrated into their respective universities

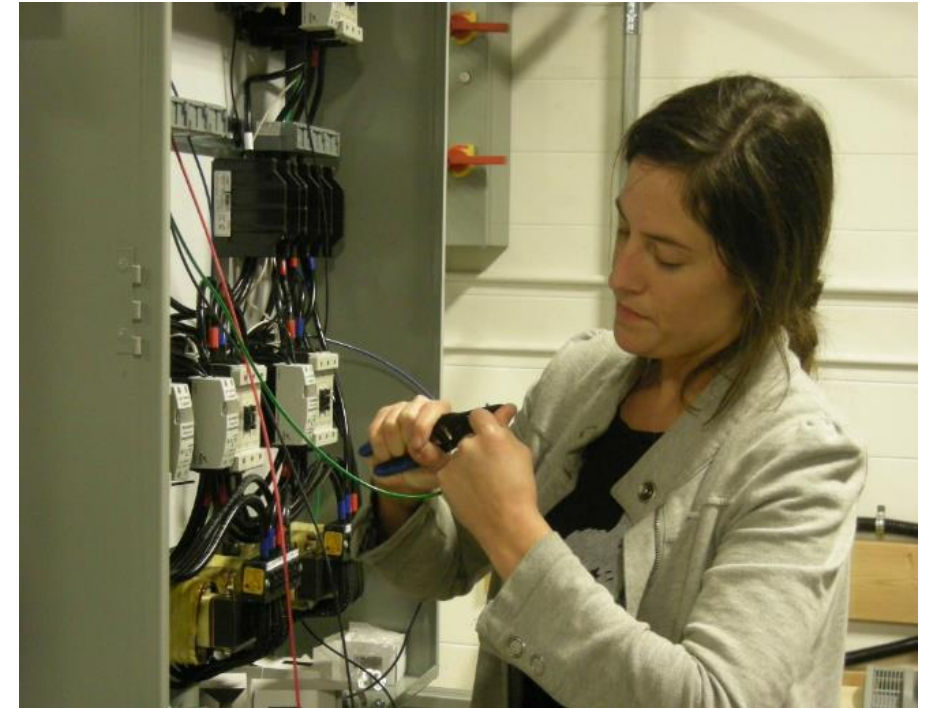
# Public University State Programs

Engineering Sustaining Funds  
TallWood Design Institute (OSU & UO)  
Dispute Resolution (UO & PSU)  
PSU Oregon Solutions  
OSU Fermentation Science  
Signature Research (OSU, PSU, UO)  
UO Labor Education Research Center

OSU Marine Research Vessel  
PSU Population Research Center  
OSU Institute for Natural Resources  
UO Domestic Violence Legal Clinic  
OSU Climate Change Research Institute  
PSU Profiling  
OT Oregon Renewable Energy Center

# Engineering Sustaining Funds

- In 1997, the Oregon Legislature created the Engineering and Technology Industry Council (ETIC), a public-private partnership to “make post-secondary engineering and technology education a strategic resource that fuels the Oregon economy and creates opportunities for all Oregonians.”
- ETIC was abolished in 2015 and the “Engineering Sustaining Funds” were moved to the Higher Education Coordinating Commission for allocation to the seven public universities



# Engineering Sustaining Funds

- HECC established a funding formula for FY16 to distribute
  - 80% “Historical Funds” to serve as a base
  - 20% “Outcomes Funding” recommended by the “Oregon Students, Oregon Jobs” employment-based funding model
- \$11.98M distributed to seven public universities under 80-20 formula in FY16
- HECC will convene a workgroup for a longer-term funding formula, expected to be complete for FY18



# TallWood Design Institute—UO & OSU

TALLWOOD  
DESIGN INSTITUTE



- School of Architecture and Allied Arts, University of Oregon
- College of Forestry, Oregon State University
- College of Engineering, Oregon State University

- The Oregon Legislature appropriated \$2.5M in 2015 to fund a collaborative institute between the UO School of Architecture and Allied Arts and the OSU Colleges of Forestry and Engineering
- Institute seeks to increase the ability of Oregon's advanced manufactured wood products industries to compete in emerging markets

# Dispute Resolution—PSU and UO

- In 2003, the Oregon Legislature transferred the programs of the Dispute Resolution Commission to the Oregon University System
- PSU and the UO provide mediation services and conflict resolution service on a 65/35 funding split between the universities
- UO School of Law administers the **Oregon Office for Community Dispute Resolution** with state funds and facilitated over 14,000 cases in the 2013-2015 biennium
- PSU Hatfield School of Government administers **Oregon Consensus** to mediate disputes involving public bodies and public lands

# Oregon Solutions—PSU



- Oregon Solutions grew out of Oregon's Sustainability Act in 2001
- Housed at PSU's College of Urban & Public Affairs, Oregon Solutions brings together local groups to solve local problems using sustainable methods
- Oregon Solutions' reach is statewide, including projects such as the Historic Columbia River Highway Collaborative, Greater Portland Area Traffic Incident Management, and Prosperity Pilot Southern Oregon Success



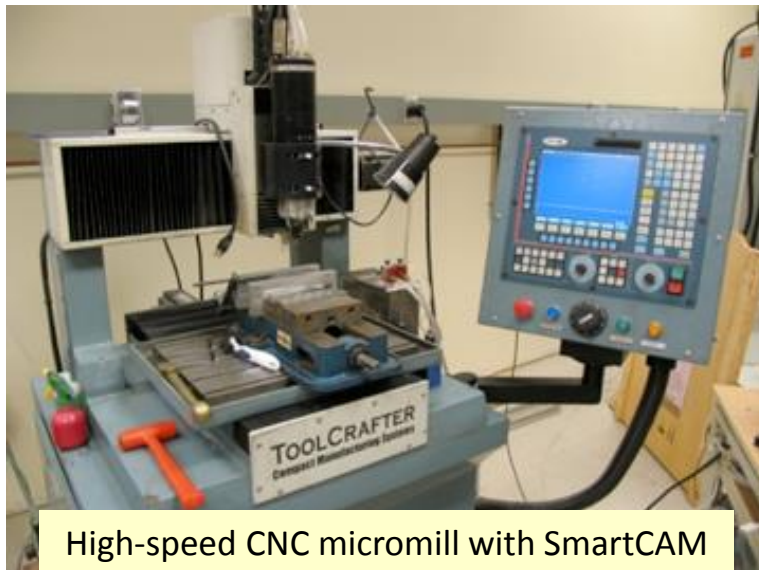
# Fermentation Science—OSU



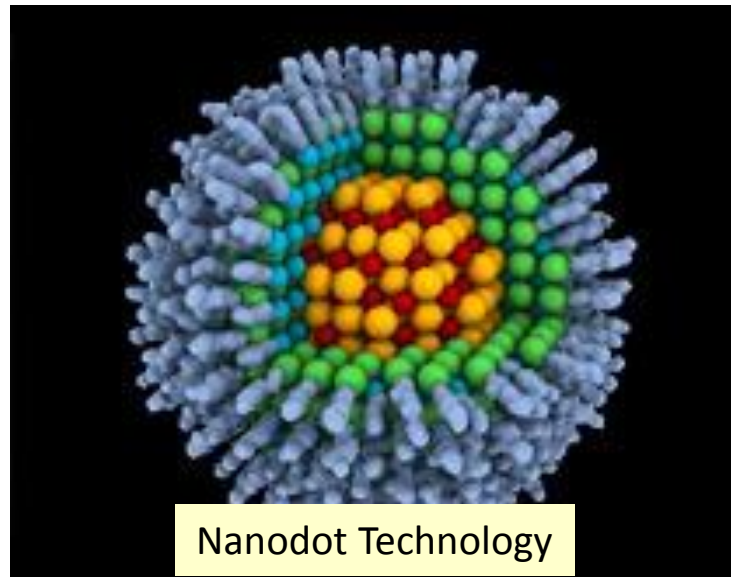
- The Oregon Legislature directed an additional \$1.2M to OSU in 2013 to expand fermentation science programs
- Funding supports university research in all aspects of its production of high value wine, beer, cheese, breads, and distilled spirits—all products of fermentation
- OSU's Quality Food and Beverage Initiative is an \$18M capital campaign designed to provide state-of-the-art pilot plant facilities for wine, brewing, and dairy products

# Signature Research—UO, OSU, & PSU

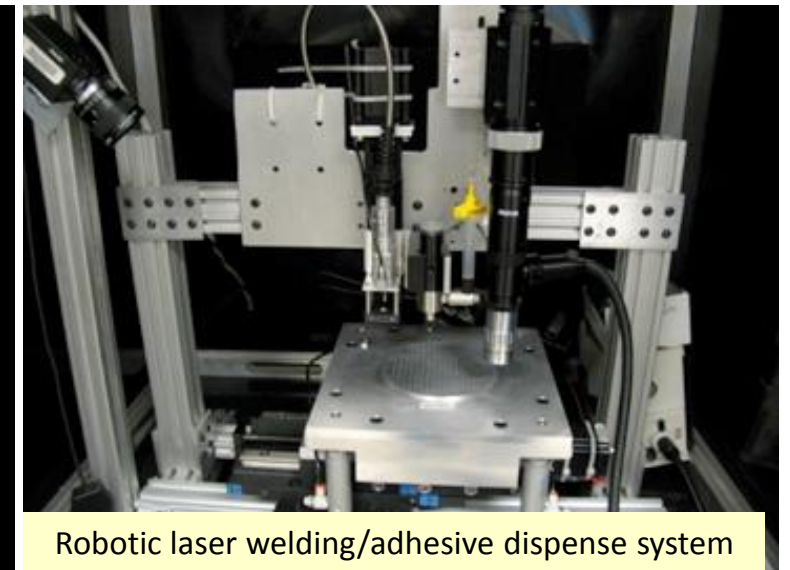
- The 2003 Legislature allocated \$1.0M to support a Signature Research Initiative in order to expand research programs in multi-scale materials and devices
- Research focuses on integrating nanotechnology and micro-technology into product engineering and design



High-speed CNC micromill with SmartCAM



Nanodot Technology



Robotic laser welding/adhesive dispense system

# Signature Research—UO, OSU, & PSU

- UO and OSU each receive 47.5% of the funding, with PSU receiving the remaining 5%
- At PSU, the State Signature Research funding is used to enhance the Center for Electron Microscopy and Nanofabrication's ability to attract external funding
- At OSU, ATAMI was instrumental in securing a 5-year, \$70M Manufacturing USA grant
- At UO, the funding supports infrastructure, personnel, and programs of the Center for Advanced Materials Characterization in Oregon (CAMCOR)

# Labor Education & Research Center (LERC)—UO

Established in 1977, LERC's mission is:

- Provide direct, hands-on education, training and consultation to workers and unions at the grassroots level
- Encourage creative and critical thinking that empowers working adults to participate meaningfully in workplace and community affairs
- Conduct applied research on issues related to work, employment and labor relations
- Make Oregon's workplaces safer by providing educational programs and conducting research on occupational safety and health issues
- Expand public awareness of Oregon's labor, working-class, and labor relations history





# Population Research Center—PSU

- Interdisciplinary public service, research, and training unit for population-related data and research for the State of Oregon
- **History:** PRC moved to Portland State University in 1965
- **Mission:** provide population data, information and research analysis for Oregon and its communities
- 4 Statewide Programs:
  1. Oregon State Data Center
  2. Oregon Population Forecast Program
  3. Oregon Population Estimates Program
  4. Special Demographic Projects



# Population Research Center—PSU Census State Data Center

- **Mission:** provide training and information about U.S. Census Bureau data for state agencies, city/county officials, and the general public
- Initiatives:
  1. Data Users Conference
    - (2016) 160 attendees in Portland, Salem, and Eugene
  2. Trainings and Data Requests
    - (2016) Responded to over 500 requests from across Oregon
  3. Oregon Census Data Profiles
    - <https://www.pdx.edu/prc/census-data-for-oregon>
  4. Oregon's lead partner w/ the U.S. Census Bureau





# Population Research Center—PSU

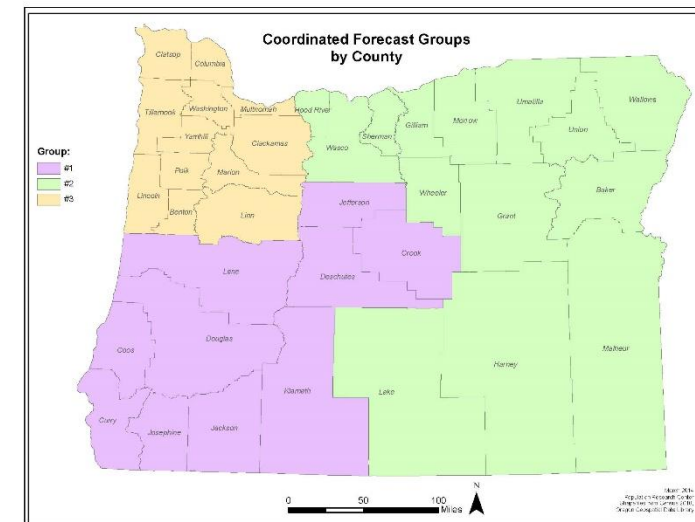
## Oregon Population Forecast Program

- In 2013, Oregon law required that the PRC issue coordinated population forecasts for land use planning
- Program provides:
  - Coordinated (city-county) 50-year population forecasts for Oregon counties every 4 years
  - Regional meetings to collect local public input and encourage public participation

### Regional Meetings

	Locations
Region 1	Roseburg; Medford; Grants Pass; Bend
Region 2	The Dalles; Hermiston; Baker City; Burns
Region 3	Astoria; Albany; Salem; Portland

	Timeframe	Region Size
Region 1	2014 to 2015	10 Counties; 59 UGBs
Region 2	2015 to 2016	14 Counties; 73 UGBs
Region 3	2016 to 2017	12 Counties; 87 UGBs



# Population Research Center—PSU

## Oregon Population Estimates Program and Special Projects

- Oregon Population Estimates Program
  - Annual population estimates (July 1) produced for Oregon counties and cities
  - Estimates are used by the state and local governments, various organizations and agencies for revenue sharing, funds allocation, and planning purposes
- Special Projects
  - Population estimates and population forecasts for special districts (e.g. water providers, fire districts, ODOT, and K-12 school districts)
  - Community needs assessments
  - Demographic analysis



# Institute for Natural Resources—OSU

- Created by the Oregon Legislature in 2001, the Institute for Natural Resources (INR) is a cooperative enterprise bringing the scientific knowledge and expertise of OSU and other universities to bear on natural resource management
- INR provides research and policy support to a variety of natural resources issues, including environmental protection and watershed conservation

# Clinical Legal Education—UO Domestic Violence Clinic

- The Legislature created the Domestic Violence Clinical Legal Education Account in 2007, and the Clinical Legal Education program transferred to a targeted program within the Oregon University System budget in 2011
- These funds were used for clinical legal education programs to provide civil legal services to victims of domestic violence, stalking or sexual assault
- Any accredited institution of higher education in Oregon that provides civil legal services to victims of domestic violence, stalking or sexual assault may apply for funds, although, currently, only UO receives funds



# Oregon Climate Change Research Institute—OSU

- The Oregon Climate Change Research Institute (OCCRI) was created in 2007 to respond to a report by the Governor's Advisory Group on Global Warming
- OCCRI facilitates research, serves as a clearinghouse for climate change information, provides climate change information to the public in integrated and accessible formats, supports the Oregon Global Warming Commission in developing strategies to prepare for and mitigate the effects of climate change, and, at least once a biennium, assesses the state of climate change science as it relates to impacts on Oregon



# Profiling—PSU



- The Oregon Legislature established the Law Enforcement Contacts Policy and Data Review Committee in 2001 to address Oregonians' concerns over racially-biased policing
- The committee's work was transferred to PSU as the Criminal Justice Policy Research Institute (CJPRI) in 2007, and funding was provided in 2015
- CJPRI provides intake staff and office space for receiving and forwarding complaints alleging profiling from the general public
- CJPRI also provides a repository for profiling complaints received and dispositions of complaints from Oregon law enforcement to track and study statewide profiling complaints over time



# Oregon Renewable Energy Center



- The Oregon Renewable Energy Center, an applied research center created in 2001, speeds the integration and optimization of renewable energy resources with current power generation systems and accelerates clean energy technologies in collaboration with industry partners.
- OREC serves small and medium-sized companies seeking a university collaborator to prototype, test, validate, and accelerate clean tech products, and renewable energy applications.
- **Oregon Tech is seeking \$985M in legislative support this session to include OREC as a State Program, like other university centers.**

# Oceangoing Research Vessel—OSU

- This state-funded program provides ship days for the use of the R/V Oceanus in the research and study of Oregon's coastal waters
- The state-funding is a match that helps OSU compete for the ship operation contract for Oceanus and the new RCRV
- In 2013, the Oregon Legislature established the Research Vessel Council, which solicits and evaluates research proposals and schedules the use of a research vessel for the selected proposals



# Oceangoing Research Vessel—OSU

***“Tracking Ocean Acidification, Hypoxia, & Zooplankton Community Response”*** led by Dr. Kim Bernard (OSU)

***“Building the STEM Pipeline through Oceangoing Research and Near-Peer Mentoring”*** led by Ms. Tracy Crews (HMSC)

***“Biodiversity, Zonation and Oceanography of Oregon’s Circalittoral Zone”***  
led by Dr. Craig Young (UO)

***“An Environmental History of the Columbia River”*** led by  
Dr. Maureen Walczak (OSU) – sails June 15-19

***“Coastal Ocean Carbon Cycling during Wintertime Conditions”***  
led by Dr. Miguel Goñi (OSU)





# Oceangoing Research Vessel—OSU

- *“That trip taught me that I really love doing field work. I'm interested in becoming a marine technician”* -- Genevie Guevara, Newport, Ore.
- Oceangoing Research Vessel program ensures the success of OSU's bid to host the next generation Regional Class Research Vessel





Thanks! Questions?