

# Department of Human Services

2017 Ways and Means Education & Human Services Joint Subcommittees

## Self-Sufficiency Programs

Kim Fredlund, Director, Self-Sufficiency Programs



May 10, 2017

# Presentation overview

1. Self-Sufficiency Programs purpose
2. Employment-Related Day Care
3. Providers
4. Outreach



# Guiding people into self-sufficiency; reducing poverty in Oregon

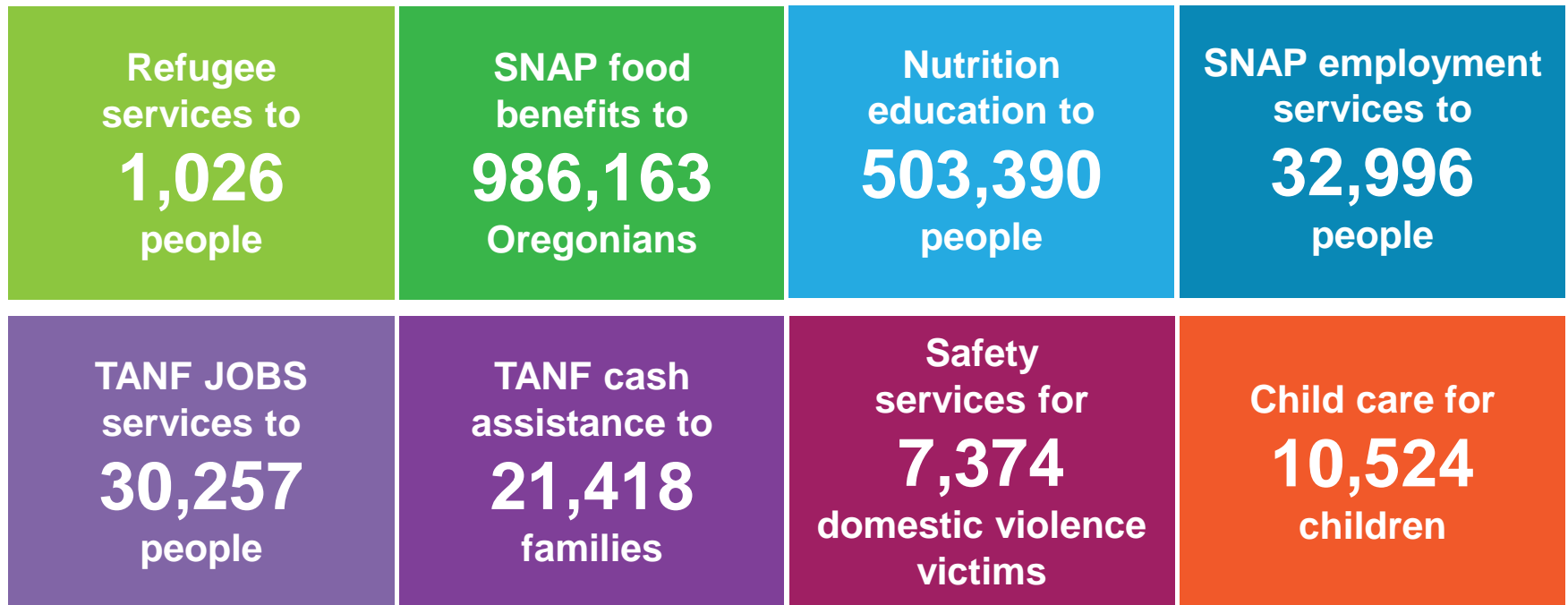


Safety Net

Stability

## Connections to Careers

# Self-Sufficiency Programs serve 1.2 million people annually; many through more than one program



# Employment-Related Day Care (ERDC) overview

ERDC is a subsidy program that helps low-income, working families pay for child care so parents can retain employment.

## Families Served

8,023 cases  
15,254 children

## Eligibility

Income must be  
below 185%  
of the Federal  
Poverty Level



# ERDC challenges

- The way we manage the budget through reservation list
- Provider availability
- State reductions
- Program awareness

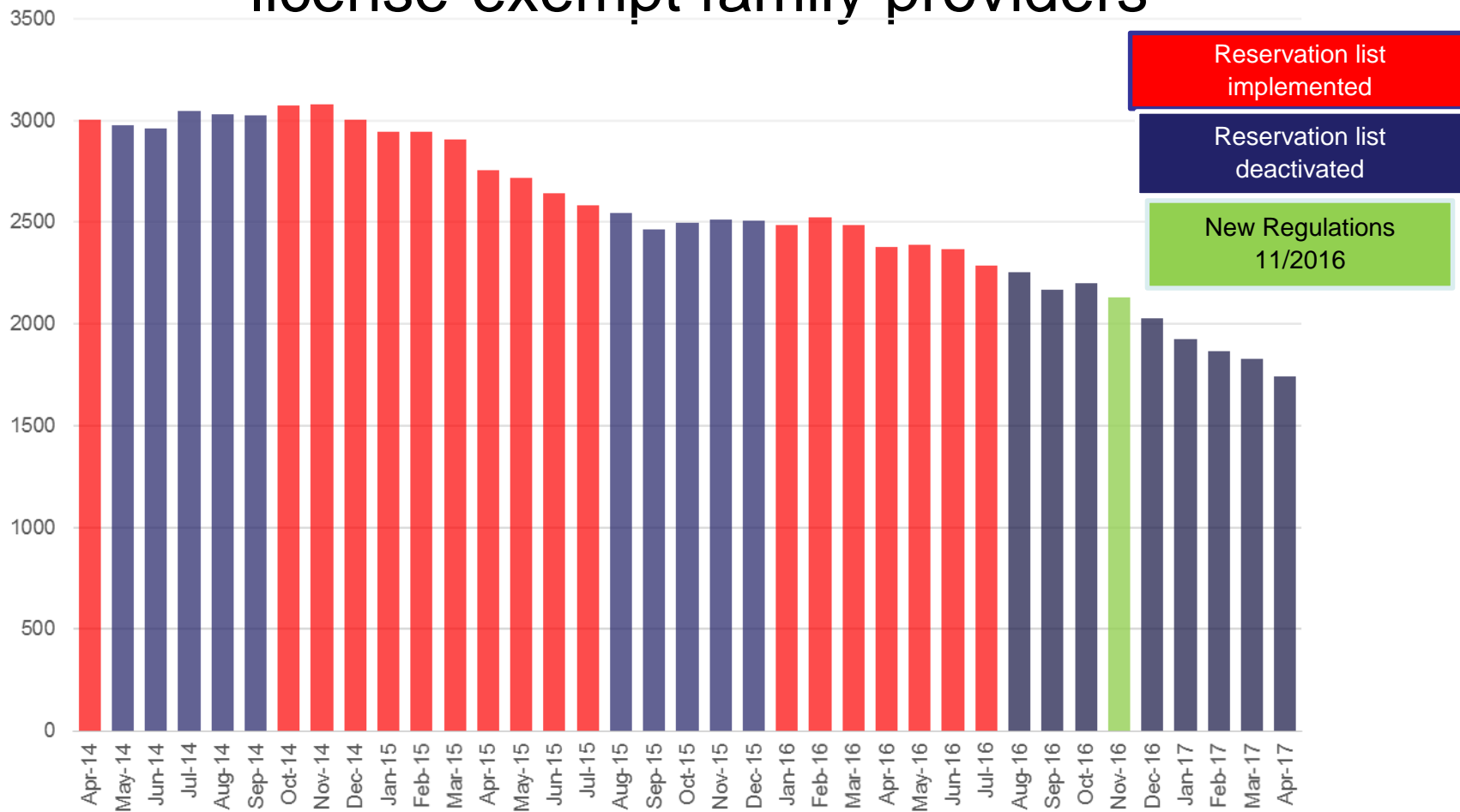
# Reservation list effect on the ERDC caseload



Red = periods reservation list implemented

Green = periods reservation list deactivated

# Impact of reservation list and new regulations on license-exempt family providers





# Requirements for non-relative providers to be on the DHS list

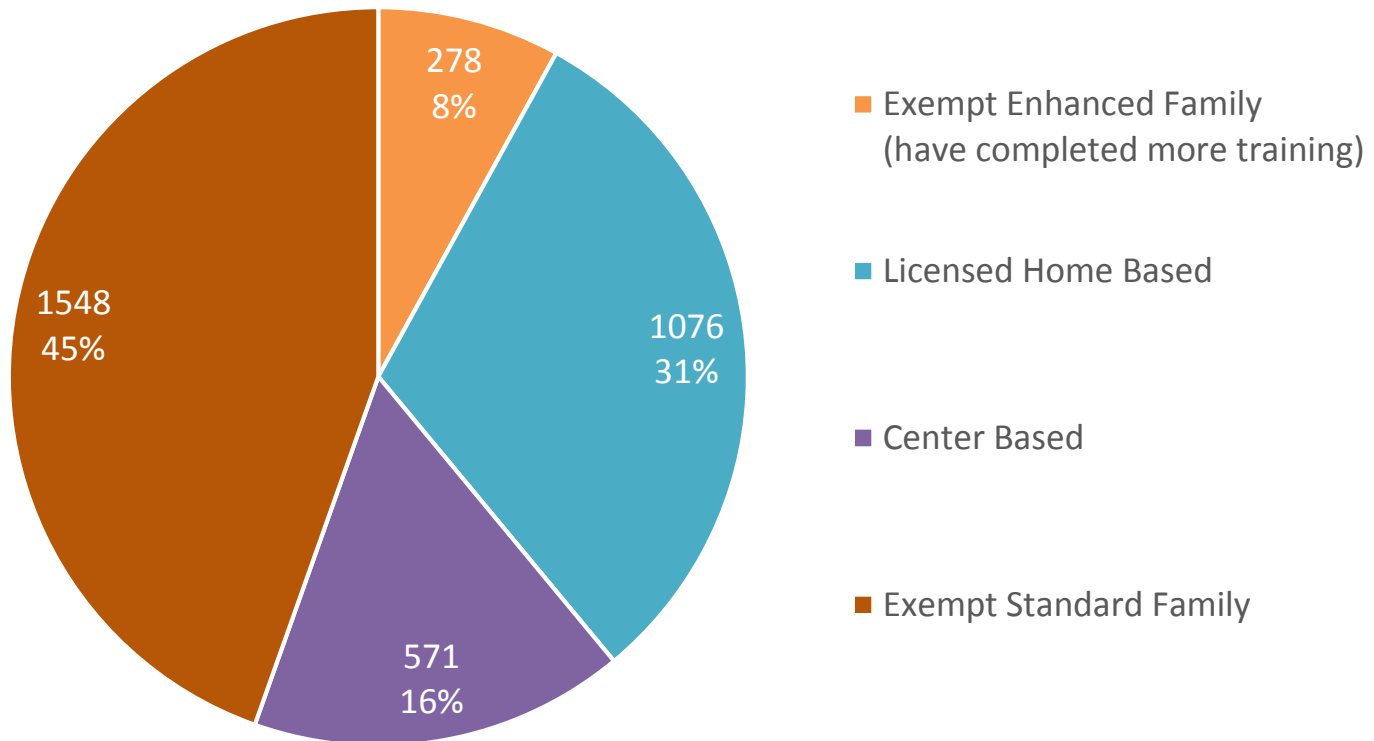
## **Prior to November 2016**

- Pre-service two hour online Health and Safety class
- Child Care Provider Listing form
- Background check with fingerprints on request
- Two hour in-person orientation within 90 days of DHS approval

## **After November 2016**

- Pre-service two hour online Health and Safety class
- Pre-service four to six hour CPR and First Aid Certification in-person
  - Provider expense \$35 - \$65
- Pre-service Recognizing and Reporting Child Abuse and Neglect online class
- Child Care Provider Listing form
- Background check with fingerprints (required as of Jan. 2017)
- Two hour in-person orientation within 90 days of DHS approval
- Six hours of additional training within each two year approval period

# DHS providers at a glance



# Teen Parent Program

Approximately 200 teens have been helped so far this year.



# Teen Parent Program Budget

- The teen case load consists of 232 contracted slots available with 32 contractors across Oregon. DHS will be receiving this case load with no additional staffing.
- The impact of the 2.7 million that DHS will need to run the Teen Parent subsidy program from January 1, 2018 to June 30, 2019. It represents an average reduction of 143 cases per month for the next biennium.
- 143 cases is a loss of 1.7% of the current caseload. DHS will be taking on 200 teen families, which will lower the standard ERDC caseload capacity from 8100 to 7957 for the biennium. Proposed reductions to the ERDC program would further decrease capacity to 6957 families.

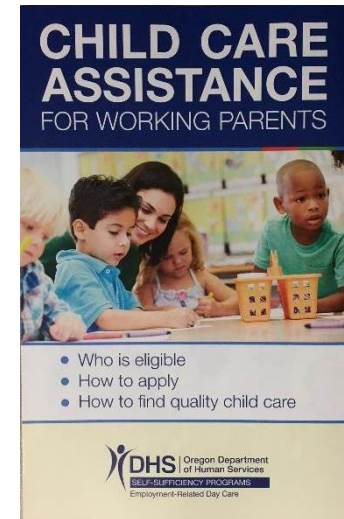
# What we have done

## Parent outreach

- In DHS offices
- With partner networks
- Direct mailings

## Provider changes

- Extend timeframe to complete DHS approval process
- Fast track first payment for providers already licensed with Office of Child Care
- FF17 paying for fingerprinting and background checks



# Thank you!

**Stay connected with us**

**[www.oregon.gov/dhs](http://www.oregon.gov/dhs)**

