



OREGON
DEPARTMENT OF
EDUCATION

Oregon achieves . . . together!

Ways and Means Subcommittee on Education

Statewide Student Assessment

Salam Noor

Deputy Superintendent of Public Instruction

Dawne Huckaby

Assistant Superintendent of Teaching, Learning & Assessment

Statewide Student Assessments

Presentation Overview

| Salam Noor | Presentation Overview & Use of Student Assessments | Page 1-3 |
|---------------|--|------------|
| Dawne Huckaby | Federal & State Requirements | Page 4-6 |
| Dawne Huckaby | Student Assessment Cost Components | Page 7-15 |
| Salam Noor | Current Issues and Challenges | Page 16 |
| Salam Noor | Cost Savings and Investment Opportunities | Page 17-18 |

Statewide Student Assessments

Use of Student Assessment Data

- The testing results from student assessments are used by teachers and administrators to measure how well students are learning and to determine how best to support their needs moving forward.
- Summative test results are used to help with policy decisions such as where and how to invest in Oregon schools and how to hold schools accountable for the outcomes of those investments.
- Student assessment data are used to help complete required annual school and district report cards.
- Information from student assessments is also required in reporting to the U.S. Department of Education on student outcomes and progress.
- There is a variety of state mandated reports in which student achievement data are required.

Statewide Student Assessments

Federal Requirements

- The Every Student Succeeds Act (ESSA) requires states to annually assess students in the academic content of math, language arts, and science.
- Math and language arts assessments are required annually in grades 3 through 8, and at least once in high school.
- Science assessments must be administered at least once in grades 3 through 5, grades 6 through 8, and once in high school.
- Participation expectation for mathematics, language arts, and science assessments is 95% of students are required to participate.
- English language proficiency assessments are required by all English Learners (EL) to assess their English proficiency in the language domains of listening, speaking, reading and writing.
- All states that receive Title I-A funds must participate in the biennial National Assessment of Educational Progress in math and reading at grades 4 and 8.

Statewide Student Assessments

State Requirements

- Oregon law matches the federal requirement for math, language arts, and science assessments. In Oregon, parents may opt their children out of participation in these assessments; however, this does not negate the federal participation rate requirement.
- State social science assessment must be made available for students; however, participation by districts is optional.
- Oregon law is consistent with federal law in the requirement for assessment of English language proficiency.
- Oregon administrative rules require school districts to administer the Oregon Kindergarten Assessment to students enrolled in kindergarten.
- Students in 10th grade are required to be provided access to a nationally normed assessment.
- Oregon administrative rules require school districts to administer local performance assessments annually to students in grades 3 through 8 and at least once in high school. ODE does not collect or audit these assessments.

Statewide Student Assessments

Requirements Summary

| Assessment | Required Grades | Basis of Requirement |
|--|--|---|
| Mathematics | 3 – 8 and high school | Every Student Succeeds Act ORS 329.485 OAR 581-022-0610 |
| English Language Arts | 3 – 8 and high school | Every Student Succeeds Act ORS 329.485 OAR 581-022-0610 |
| Science | 5, 8, and at least once in high school | Every Student Succeeds Act ORS 329.485 OAR 581-022-0610 |
| Social Sciences <i>(optional)</i> | 5, 8 and at least once in high school | ORS 329.485 OAR 581-022-0610 |
| English Language Proficiency (ELPA21) | Kindergarten – 12 | Every Student Succeeds Act OAR 581-022-0610 |
| Kindergarten Assessment | Kindergarten | OAR 581-022-2130 |
| National Assessment of Education Progress (NAEP) | 4 and 8 | ESRA, Title III, sec. 303, ESSA |
| Preliminary Scholastic Aptitude Test (PSAT) | 10 | ORS 329.488 |
| Local Performance Assessments | 3 – 8 and at least once in high school | OAR 581-022-0615 |

Statewide Student Assessments

Student Assessment Cost

- The 2017-19 Modified Current Service Level (CSL) for student assessments in \$24.0 million.
- The Governor's Recommended Budget includes a policy option package which provides \$3.1 million for student assessments.
- The cost for administering statewide student assessments is driven by three components – cost of state oversight and technical assistance; cost of administering student tests; and cost of testing content (items).
- The cost of each component for the 2017-19 CSL is as follows:
 - State Oversight and Technical Assistance: 14.5%
 - Student Test Administration: 71.0%
 - Student Testing Content: 14.5%

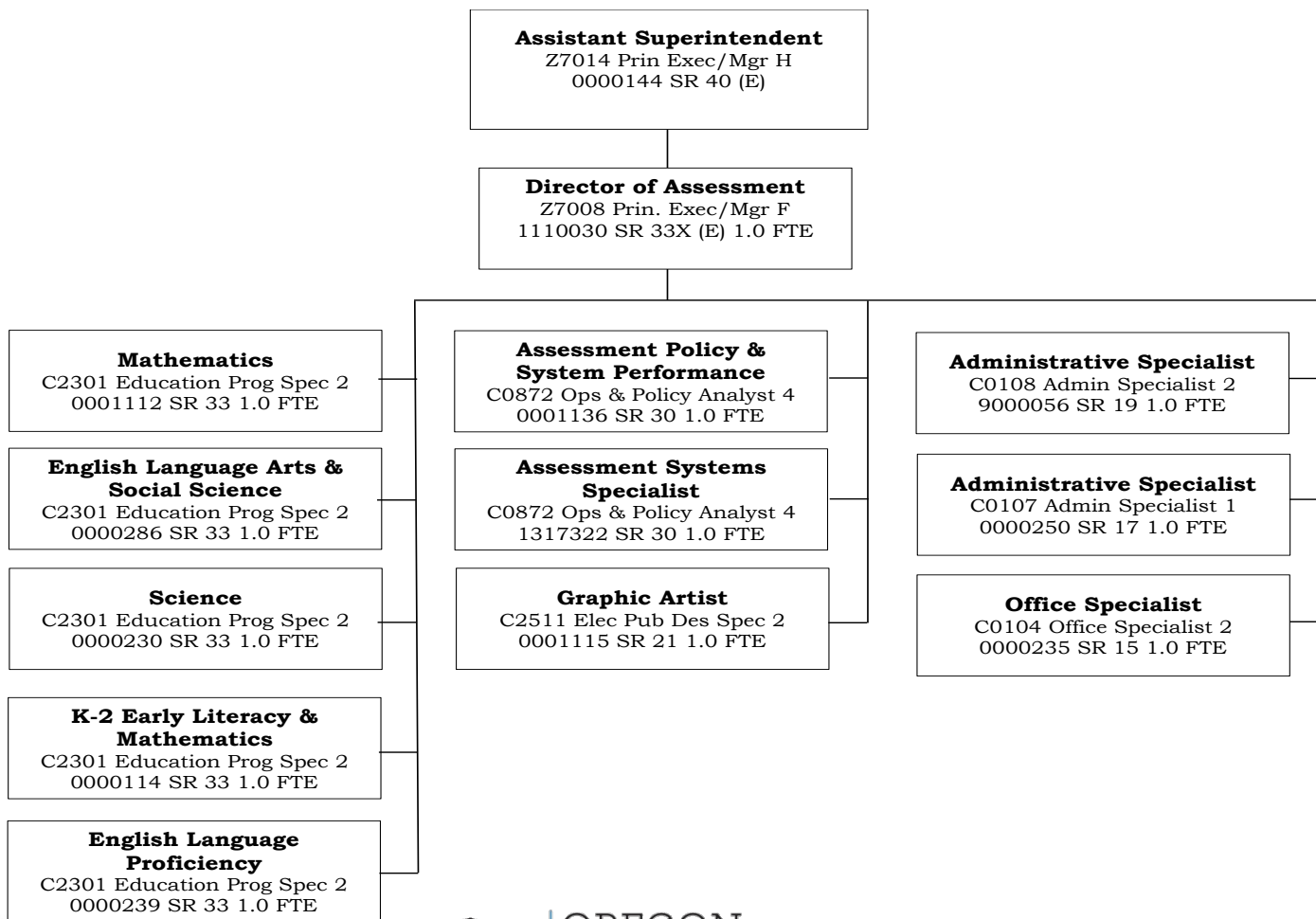
Statewide Student Assessments

State Oversight and Technical Assistance

- The 2017-19 CSL estimate to provide oversight and technical assistance to student assessment is \$3.5 million, which includes 12.0 FTE.
- The Assessment Unit within the Office of Teaching, Learning and Assessment is responsible for state oversight and technical assistance and carries out the following responsibilities:
 - Establish vision, mission, and goals consistent with agency objectives regarding assessment activities to ensure high quality assessments;
 - Manage policy development/implementation, quality assurance, stakeholder engagement, and communication efforts;
 - Facilitate development of statewide assessments, including technical documents, training, and interpretative materials such as the test administration manual and training modules for district test coordinators/administrators;
 - Ensure Oregon's assessments meet standards of technical adequacy and provide usable information and guidance for all stakeholders; and
 - Manage and coordinate assessment systems, technology requirements, and technical assistance.

Statewide Student Assessments

State Oversight and Technical Assistance



Statewide Student Assessments

Student Testing Administration

- The 2017-19 CSL for student testing administration is \$17.1 million.
- Testing administration is provided through a service contract with the American Institutes for Research (AIR) to conduct over 1.6 million student tests.
- Services provided by AIR include the following:
 - Hosting five online assessment systems;
 - Printing and distribution services for the manual kindergarten testing materials; and
 - User management, test delivery, scoring, and reporting services for all student assessments.
- In addition, to the \$17.5 million in student testing administration, ODE provides funding through a State School Fund carve-out to pay for 10th graders to take the PSAT. In the 2015-16 school year, a total of \$368,000 of funding was used to support 30,965 students.

Statewide Student Assessments

Student Testing Content

- The 2017-19 CSL for student testing content is \$3.5 million.
- The CSL estimate is represented by the current consortium agreement with Smarter Balanced for Math and English Language Arts.
- This agreement provides ODE with access to summative assessments which include:
 - Item and test development services;
 - Assessment research;
 - Psychometric analysis and reporting;
 - Technical documentation and support; and
 - Access to a wide array of accessibility supports, including Braille, ASL, and closed captioning.
- There is a second agreement as part of the Governor's Recommended Budget with the University of California Los Angeles (UCLA) that represents similar services for English Language Proficiency.

Statewide Student Assessments

Governor's Recommended Policy Package 106

- In addition to the CSL, the Governor's Recommended Budget includes a policy package (POP 106) that allocates \$3.1 million of increased resources for Student Assessments.
- Approximately \$1.3 million is required for the ongoing cost of both test administration and content for the ELPA assessment rolled out in 2015-17.
- A one-time investment of \$1.5 million is needed to develop a new science assessment that is aligned with the Next Generation Science Standards (NGSS) adopted by the State Board of Education in March 2014. ODE has also estimated a one time \$135,000 investment to automate the current Kindergarten Assessment.
- An increase of \$185,000 (1.0 FTE) is necessary to manage increasing workload related to state oversight and new assessment development.
- The \$2.8 million for ELPA and new science assessment is necessary to maintain state and federal requirements. Other program and operation reductions will be necessary should this policy package not be approved.

Statewide Student Assessments

Student Assessment Budget Summary

2017-19 Total Estimated Cost

| Budgetary Cost | 2017-19 Mod Current Service Level | Policy Package 106 | 2017-19 Estimated Cost | Percentage Increase |
|---|---|--------------------------|------------------------------|------------------------|
| State Oversight and Technical Asst. | \$3,494,841 | \$185,806 | \$3,680,647 | 5.3% |
| Student Testing Administration | \$17,053,691 | \$416,232 | \$17,469,923 | 2.4% |
| Student Testing Content | \$3,492,460 | \$842,400 | \$4,334,860 | 24.1% |
| Student Assessment Development (Science/KA) | \$0 | \$1,635,946 | \$1,635,946 | 100.0% |
| Total | \$24,040,992 | \$3,080,384 | \$27,121,376 | 12.8% |

Statewide Student Assessments

Average Cost Per Student

Annual Student Assessments

| Assessment | Grades * | Estimated Students | Avg. Cost Per Student |
|-----------------------------------|--------------|--------------------|-----------------------|
| English Language Arts/Math (SBAC) | 3-8, 11 (12) | 303,054 | \$27.76 |
| Social Sciences | (5,8,11) | 4,288 | \$34.38 |
| Science | 5,8,11 | 128,388 | \$14.88 |
| English Language Proficiency | K-12 | 56,856 | \$33.26 |
| Kindergarten | K | 41,534 | \$9.19 |
| Total | ALL | 534,120 | \$23.86 |

* Parenthesis () indicate grade level at which the assessment is optional for students.

Statewide Student Assessments

Specific Student Assessments and Cost

| 2017-19 CURRENT SERVICE LEVEL | ELA/MATH | SCIENCE | SOCIAL SCIENCE | ELPA21 | KINDERGARTEN | ANNUAL TOTAL | BIENNIUM TOTAL |
|---|----------------------------|----------------------------|--------------------------|----------------------------|--------------------------|------------------------------|------------------------------|
| STATE OVERSIGHT AND TECHNICAL ASSISTANCE | | | | | | | |
| STATE OVERSIGHT/COMPLIANCE | \$640,163 | \$271,204 | \$9,058 | \$120,101 | \$87,735 | \$1,128,261 | \$2,256,521 |
| STATE TECHNICAL ASSISTANCE/DIRECT SUPPORT | \$246,735 | \$124,842 | \$35,369 | \$141,476 | \$70,738 | \$619,160 | \$1,238,320 |
| TOTAL STATE OVERSIGHT AND TECHNICAL ASSISTANCE FTE | \$886,898 5.04 | \$396,046 2.41 | \$44,427 0.65 | \$261,577 2.60 | \$158,473 1.30 | \$1,747,421 12.00 | \$3,494,841 12.00 |
| STUDENT TESTING ADMINISTRATION AND CONTENT | | | | | | | |
| STUDENT TESTING ADMINISTRATION | \$5,755,519 | \$1,468,372 | \$102,980 | \$999,962 | \$200,013 | \$8,526,846 | \$17,053,691 |
| STUDENT TESTING CONTENT | \$1,746,230 | \$0 | \$0 | \$0 | \$0 | \$1,746,230 | \$3,492,460 |
| TOTAL STUDENT TESTING ADMINISTRATION | \$7,501,749 | \$1,468,372 | \$102,980 | \$999,962 | \$200,013 | \$10,273,076 | \$20,546,151 |
| ANNUAL STUDENT ASSESSMENT CSL | \$8,388,646 | \$1,864,417 | \$147,407 | \$1,261,540 | \$358,486 | \$12,020,496 | \$24,040,992 |
| POLICY OPTION PACKAGE 106 | | | | | | | |
| STATE TECHNICAL ASSISTANCE/DIRECT SUPPORT | \$23,225 | \$46,453 | \$0 | \$0 | \$23,225 | \$92,903 | \$185,806 |
| STUDENT TESTING ADMINISTRATION | \$0 | \$0 | \$0 | \$208,116 | \$0 | \$208,116 | \$416,232 |
| STUDENT TESTING CONTENT | \$0 | \$0 | \$0 | \$421,200 | \$0 | \$421,200 | \$842,400 |
| ONE TIME SYSTEM DEVELOPMENT | \$0 | \$750,000 | \$0 | \$0 | \$67,973 | \$817,973 | \$1,635,946 |
| TOTAL POLICY OPTION PACKAGE 106 FTE | \$23,225 0.25 | \$796,453 0.50 | \$0 0.00 | \$629,316 0.00 | \$91,198 0.25 | \$1,540,192 1.00 | \$3,080,384 1.00 |
| ANNUAL ESTIMATED COST FTE | \$8,411,871 5.29 | \$2,660,870 2.91 | \$147,407 0.65 | \$1,890,856 2.60 | \$449,684 1.55 | \$13,560,688 13.00 | \$27,121,376 13.00 |
| ONGOING AVERAGE ANNUAL COST PER STUDENT | | | | | | | |
| AVERAGE NUMBER OF STUDENTS TESTED ANNUALLY | 303,054 | 128,388 | 4,288 | 56,856 | 41,534 | 534,120 | |
| STATE OVERSIGHT AND TECHNICAL ASSISTANCE | \$3.00 | \$3.45 | \$10.36 | \$4.60 | \$4.37 | \$3.45 | |
| STUDENT TESTING ADMINISTRATION/CONTENT | \$24.75 | \$11.44 | \$24.02 | \$28.66 | \$4.82 | \$20.41 | |
| 2017-19 ONGOING AVERAGE COST PER STUDENT | \$27.76 | \$14.88 | \$34.38 | \$33.26 | \$9.19 | \$23.86 | |

Statewide Student Assessments

Current Issues & Challenges

- Since the implementation of Smarter Balanced for both Math and English Language Arts, there have been continuous concerns from districts regarding the length and time commitment associated with the assessments.
- In 2015, Legislation was passed that enabled parents the ability to opt their children out of taking the assessments, which creates a risk in meeting federal participation requirements.
- There is a growing sentiment among educators that high school students should be assessed for math and language arts through a Nationally Recognized Assessment (i.e. SAT, ACT), as opposed to Smarter Balanced.
- With the state facing budget deficits in 2017-19, it has become imperative for state agencies to identify cost efficiencies and savings.
- Interim and Formative Assessments tools are needed for local school districts to become better informed of students' progress at the school and classroom levels.

Statewide Student Assessments

Cost Savings

- For the Governor's Recommended Budget, ODE is required to identify and implement \$1.7 million in budget reductions for student assessments.
- The ability to achieve these reductions is contingent on ODE negotiating with the student content provider to see efficiencies in the testing blueprint.
- If approved, ODE estimates it can achieve the \$1.7 million reduction, as well as an additional \$811,000 that could be applied against the cost of policy package 106.
- The estimated \$2.5 million cost savings would be generated through a reduced number of test items that require hand scoring for both math and English language arts.
- As a result, the Smarter Balanced tests would be shortened, which would address some of the concerns raised by school districts and parents.

Statewide Student Assessments

Investment Opportunities

- ODE is currently in the process of conducting a Request for Information (RFI) to determine qualified providers of nationally recognized tests for high school.
- The RFI will inform the agency what assessments can best meet state standards and requirements and provide a fair and competitive price.
- Based on information received from other states that are pursuing this same direction, the average cost per student for test administration and content is around \$46.00.
- Based on this estimate, the net cost increase of implementing a new test for high school and discontinuing the current test is approximately \$2.4 million.
- If this were the direction the Legislature chooses, this investment along with both policy package 106 and estimated cost savings would result in a \$3.0 million increase to the 2017-19 modified CSL for student assessments.
- To implement interim and formative assessment tools, ODE estimates the need for an additional \$4.0 million (\$7.0 million increase in modified CSL).

Statewide Student Assessments

QUESTIONS



OREGON
DEPARTMENT OF
EDUCATION

Oregon achieves . . . together!