

CITIZENS VIEW



Focus-Marijuana

APRIL
2017



SHIRLEY MORGAN
DIRECTING
SAFE DRUG POLICY
BA MA MS AGL

WASHINGTON ILLEGAL MEDICAL MARIJUANA GROW



THE COLE MEMO ISN'T WORKING!

On August 29, 2013, U. S. Deputy Attorney General James M. Cole issued a memorandum outlining how the Department of Justice will enforce the federal Controlled Substances Act of 1970 regarding marijuana. He listed 8 points the federal government will act to prevent if any of these points are violated in states that have legalized marijuana for medical and/or recreational use:

1. Preventing the distribution of marijuana to minors

2. Preventing revenue from the sale of marijuana from going to criminal enterprises, gangs, and cartels

3. Preventing the diversion of marijuana from states where it is legal under state law in some form to other states

4. Preventing state-authorized marijuana activity from being used as a cover or pretext for the trafficking of other illegal drugs or other illegal activity

5. Preventing violence and the use of firearms in the

cultivation and distribution of marijuana

6. Preventing drugged driving and the exacerbation of other adverse public health consequences associated with marijuana use

7. Preventing the growing of marijuana on public lands and the attendant public safety and environmental dangers posed by marijuana production on public lands

8. Preventing marijuana possession or use on federal property

WASHINGTON DRUG TASK FORCE DISMANTLES ILLEGAL MEDICAL POT GROW – WASHINGTON STATE– Feb. 2017

By Shirley Morgan

Recently I had the opportunity to join an illegal medical marijuana bust with the Washington Drug Task Force Team in Washington State, headed by Commander John Horch. As a citizen observer I watched the organization of the team as it approached the suspected property to dismantle this operation. It was a birds eye view of how the marijuana black mar-



ket continues to be alive and well in States that have attempted to legalize medical and recreational marijuana.

An investor from Texas purchased a rural Washington property for \$400,000 cash with the intent to engage a local grower from Oregon to fabricate a fake medical marijuana grow. In Washington growers are required

to display a legitimate doctors recommendation to grow 15 plants for medical marijuana cardholders. Four fake recommendations were neatly posted on the wall. To attempt to make things look official they had white jackets made with a medical marijuana logo on it hanging in the grow areas. The marijuana was sold to a middle man, profits were split between the grower and Texas investor, and the middle man sold it to Oregon and Washington dispensaries.



CLONING PLANTS & SKUNK SMELL OF POT

There were two large metal barns that had been turned into various marijuana growing rooms. As you entered each building the skunk smell of pot was so bad that you wondered how anyone could possibly work inside one of these buildings, clearly revealing the employee safety risks for those involved in the grow.



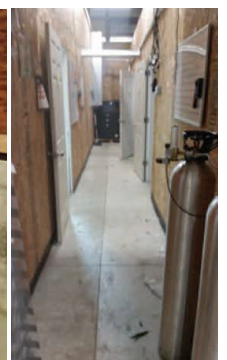
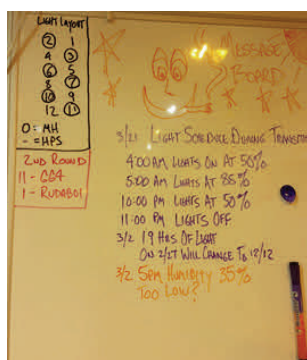
This very organized operation had already been busted in November of 2016 and the Drug Task Force Team was back again in February of 2017 to dismantle the operation again, showing the flagrant disrespect for the law. The difference this time was that everything including equipment, pot, land, and bank accounts were seized.

The trimming table with an above area look out was another illustration of the shadiness of this illegal operation.



ILLEGAL USE OF WATER COMING FROM ON SITE HOSES

Sophisticated grow lights, timed watering and lighting systems and drying rooms were well positioned throughout the operation.



CITIZENS VIEW

6 GROW ROOMS WERE COMPLETELY DISMANTELED IN 5 HOURS

The goals of the Washington Drug Task Force team are to disrupt and dismantle drug trafficking organizations, conduct investigations of mid and upper-left drug dealers/manufacturers, investigate and problem solve related to neighborhood drug problems, promote inter-agency cooperation, promote interdisciplinary cooperation of fighting drugs, analyze and disseminate intelligence, maintain a communications network between law enforcement, and be an educational and informational resource for community partners regarding illegal drugs.

Citizens rarely have the opportunity to see what really goes on behind the scenes and the risks involved in maintaining public safety in our communities. This was a well organized drug task force team who clearly sent a message to the illegal drug dealers that Washington is not going to tolerate illegal drug activity. I applaud them!

THE COLE MEMO ISN'T WORKING!

This bust clearly demonstrates that the Cole Memo which has allowed states to experiment with medical and recreational marijuana has only opened the doors for such operations as this, who made not one but two attempts to set up fake illegal medical marijuana operations in the middle of our rural residential communities, exhausting local law enforcement resources.



ALL PHOTO'S TAKEN WITH PERMISSION AND PROVIDED BY SHIRLEY MORGAN

ALARMING BURN PILE !

A burn pile was found behind the buildings that included pesticide fill dirt pot holders, paint cans, plastic piping proving the dangerous environmental damage to the surrounding area.



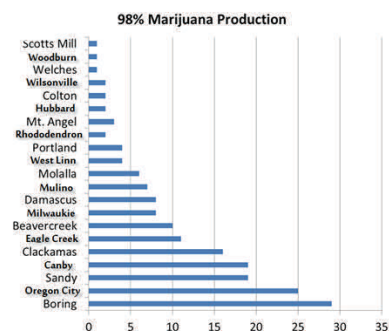
QUALITY OF LIFE - 259 Commercial Pot Land Use Applications –Citizen Complaints

It is being touted that Clackamas County land use regulations are being used as a model for other counties, yet their land use regulations are the most liberal in the State and have opened up the door for commercial marijuana growing in almost every zone in the County. <http://www.clackamas.us/planning/marijuana.html>

Pot growers have little respect for the environment or the surrounding neighbors. Many are cutting down all of the trees and many of the properties are surrounded by smaller lot rural residential land owners who now will be greatly impacted by these large outdoor pot grows. Pot growers, wholesalers, proces-

sors and retailers are taking over complete areas in our rural residential communities. In Boring Oregon of the 188 marijuana land use applications over 20% has targeted various areas of our rural residential farming community to set up their pot industry. In a 3 mile radius 5 commercial pot grows many unknown medical marijuana grows, butane hash oil processing center and 2 marijuana wholesalers. Outrageous! As you can see from the chart, the unincorporated area of Boring has been overrun with pot production facilities impacting the communities, public safety, quality of life, and property values.

CLACKAMAS COUNTY-OREGON



**P. O. Box 1351
 Welches, Oregon 97067**



Consultant, Trainer, Speaker

Building partnerships between citizens and government officials to help develop safe drug policies.

<https://www.youtube.com/watch?v=uTLLUKsbyaY&feature=youtu.be>

CONNECTIONS

- **Monthly Connections**
- **Quarterly New View Newsletter**
- **Quarterly Community Educational Forums –Focus Marijuana**
- **Annual Nat'l Safe Drug Policy Summit-Focus Marijuana –April 17-18 2018**
- **Web Trainings**
- **Small groups meetings**



We believe we are socially responsible for preserving public safety, quality of life, and protection of property values on behalf of our communities and for the legacy of our children.



**BLACK MARKET MARIJUANA
 FLOURISHES IN WASHINGTON STATE**

Washington Drug Task Force team intercepted a full size Dodge Ram 1500 pick up that was being loaded on a semi-truck for cross country trip. The driver of the semi noticed an odd smell when loading the truck. The Semi had a hidden compartment underneath truck bed with 101 lbs. total of processed marijuana being put on semi truck headed for Charlotte South Carolina , 54 lbs. of it found in safe in back seat.

Goes for \$4,000 a lb. on East Coast – Over
\$400,000.00 in street value



Photo's provided by Washington Drug Task Force
 March 1, 2017

