

SOUTHERN OREGON EARLY LEARNING HUB

Supporting Children and Families with Community Wide ACES Training
and Trauma Informed Implementation Assistance

Region Wide Trainings on ACES and Trauma Informed Practices

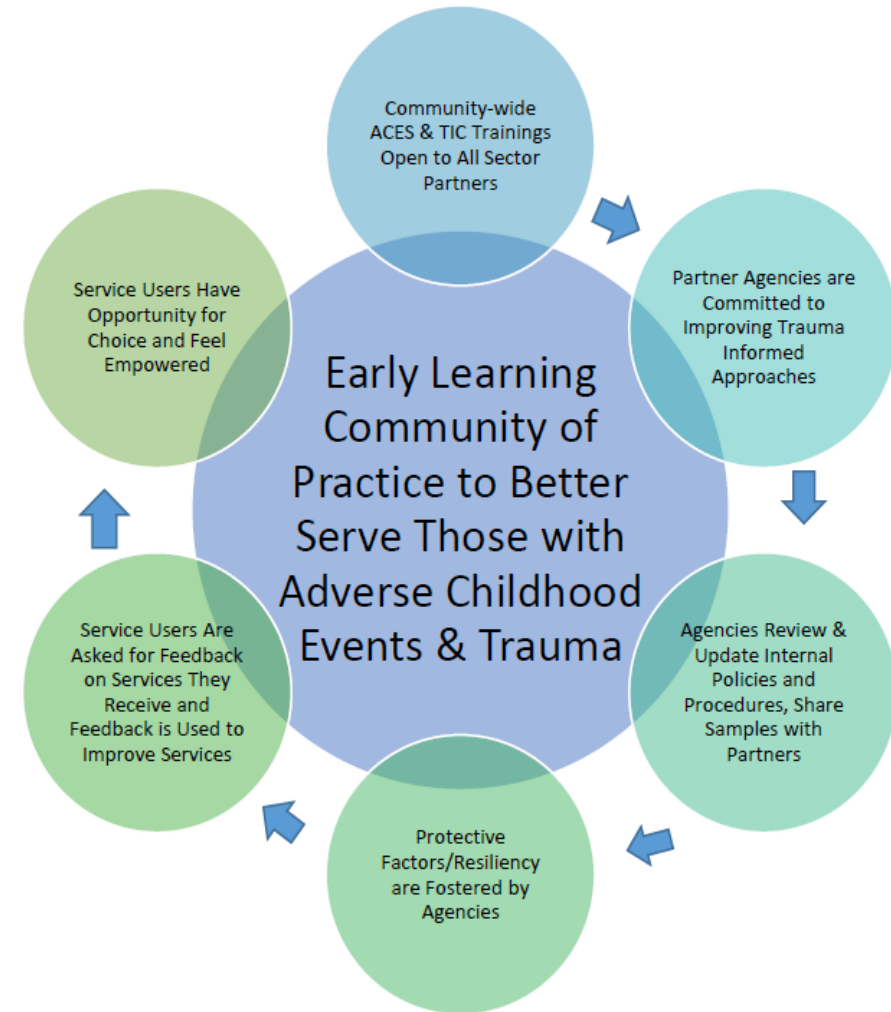
- Several high profile conferences with national leaders in the field created momentum to move toward becoming a trauma-informed region
- 70 Introduction to ACES Trainings from May 2016 – January 2017
- 2,271 local partners and community members trained
- 13 new community trainers have been trained this month, for a total of 20 in our region, including two bilingual trainers



Community of Practice

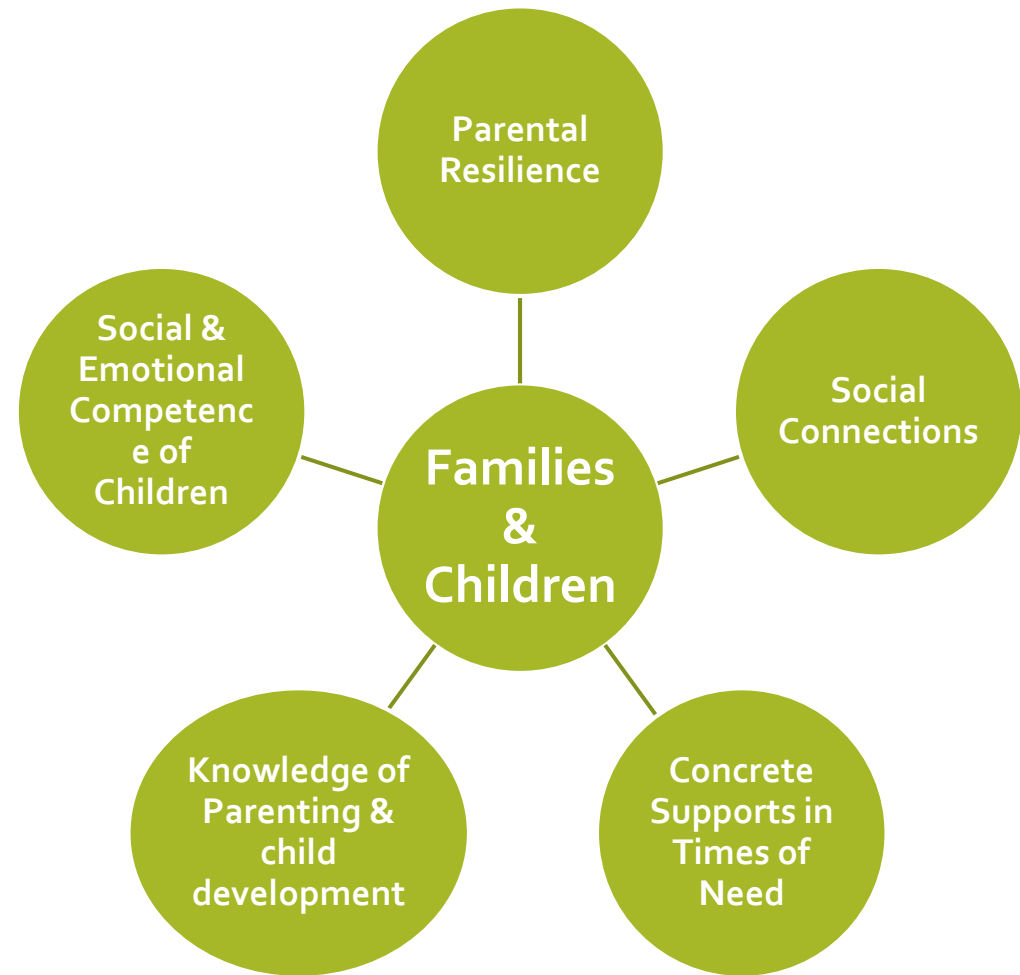
40 agency representatives from: early learning, elementary schools, mental health, addictions recovery, community health, CCO's, 211, Child Care Resource & Referral, Healthy Families, Head Start, Early Head Start, Public Health, DHS Self Sufficiency, the parenting hub, EI/ECSE, Relief Nursery and others.

Southern Oregon Early Learning Hub



Skilling Up Partners Serving Families

- 20 skilled trainers in region receiving 3 days of instruction
- Hub will deploy trainers to ensure partner agencies receive training
- Outcomes:
 - Strengthened Families
 - Optimal Child Development
 - Reduced likelihood of child abuse and neglect



**A Recipe for
Success:**

**Community
Interest
+
Training
Opportunity
+
Implementation
Assistance**

**Healthy, Stable and
Attached Families**

Region wide training on ACES and
trauma-informed practices

Early Learning Agency Advisory
Council embracing implementing
policies and procedures

20 regional trainers equipped to
train other organizations on
Strengthening Families Framework
of Protective Factors