

# DEPARTMENT OF GEOLOGY AND MINERAL INDUSTRIES

WAYS & MEANS SUBCOMMITTEE  
ON NATURAL RESOURCES

MARCH 2, 2017



# ABOUT DOGAMI

## AGENCY MISSION, VISION & GOALS

*Lidar image of a stream network along the Umpqua River in southwest Oregon. Image: DOGAMI*

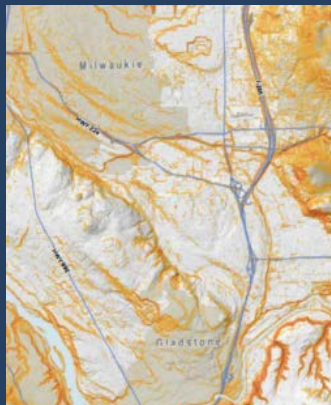
# DOGAMI STRATEGIC FRAMEWORK

- **Mission:** The Department of Geology and Mineral Industries (DOGAMI) provides earth science information and regulation to make Oregon safe and prosperous
- **Vision:** Through science and stewardship, DOGAMI is working toward an Oregon where:
  - *People and places are prepared for natural hazards*
  - *Decisions for Oregon's future always consider natural hazards*
  - *Resource potential is fully understood and responsibly developed*
  - *Earth science contributes to the health of our coast, rivers, forests and other ecosystems*
  - *Geologic learning and discovery abound*

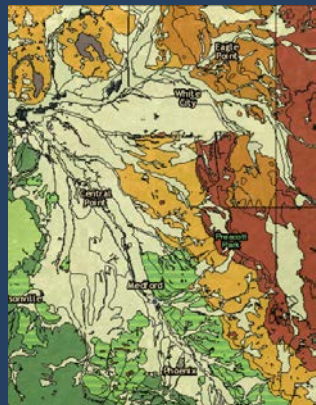


# DOGAMI STRATEGIC FRAMEWORK

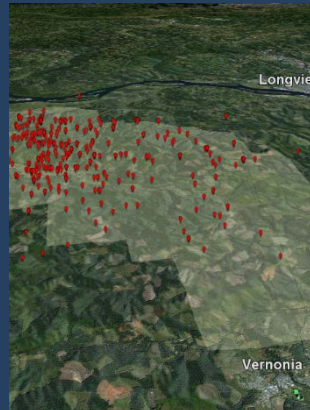
*Advances Mission & Vision by setting goals in 5 Focus Areas*



**Natural Hazards**  
*Assessing natural hazards to help increase resilience*



**Earth Science**  
*Providing geologic data & information*



**Resource Management**  
*Effective, balanced regulation of resource extraction*



**Outreach & Education**  
*Connecting information with Oregonians*



**Governance & Operations**  
*Optimizing operations to achieve our mission*



# TRACKING PROGRESS

## Existing Key Performance Measures

<i>Propose removing in 2017 – Completed</i>	<i>Propose removing in 2017</i>	<i>Propose replacing with new in 2017-2019</i>	<i>Propose continuing in 2017-2019</i>
<ul style="list-style-type: none"> <li>• KPM #3 – Tsunami Evacuation Map Completion</li> <li>• KPM #9 – Tsunami Inundation Map Completion</li> <li>• KPM #7 – Regional Geologic Map Completion</li> </ul>	<ul style="list-style-type: none"> <li>• KPM #5 – Acres of Reclaimed Land</li> <li>• KPM #12 – Geologic Hazard Preparedness</li> </ul>	<ul style="list-style-type: none"> <li>• KPM #1 – Earthquake and Landslide Map Completion</li> <li>• KPM #3 – Coastal Erosion Map Completion</li> <li>• KPM #6 – Geologic Map Completion</li> <li>• KPM #8 – Mine sites inspected annually</li> </ul>	<ul style="list-style-type: none"> <li>• KPM #10 – Customer Service</li> <li>• KPM # 11 – Governance</li> </ul>



# TRACKING PROGRESS

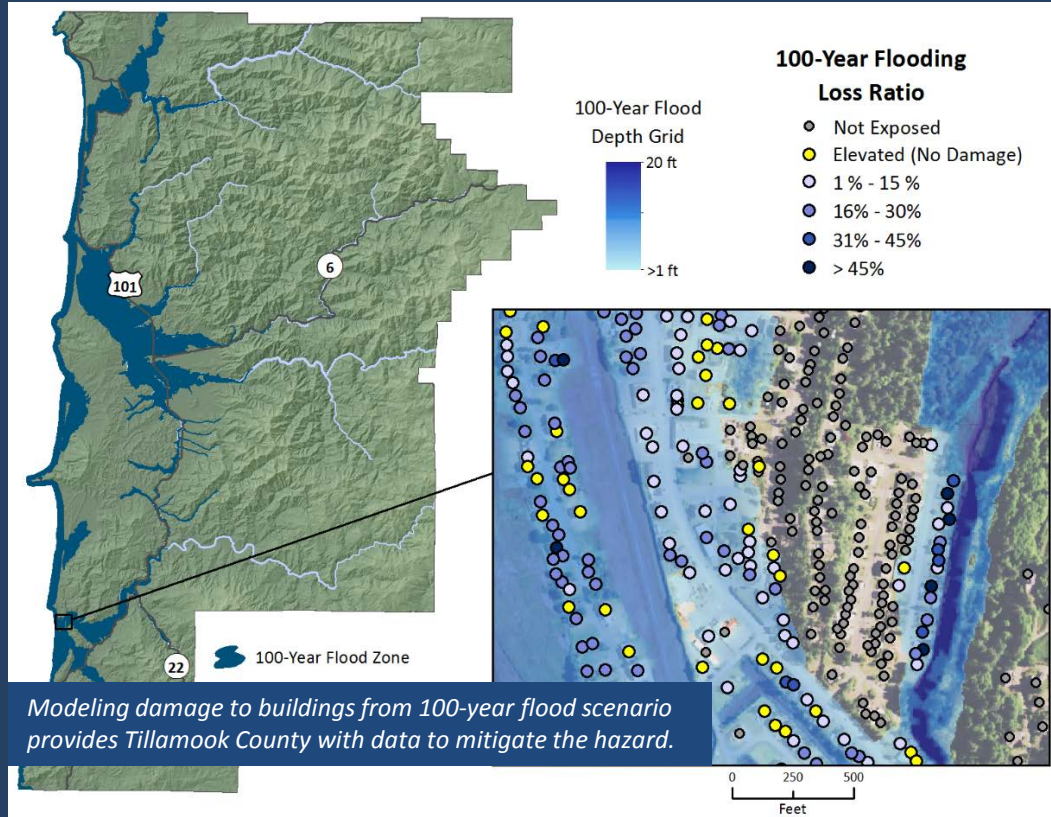
**New KPMs:** DOGAMI is proposing 5 new Key Performance Measures for implementation in 2017-2019. The new KPMs:

- *Align with the goals and objectives of the Strategic Framework*
- *Correct reliance of previous KPMs on:*
  - *Unsustainable & unpredictable funding sources*
  - *Outcomes the Agency could not impact*

**Continuing KPMs:** Customer Service, Governance



# HAZARD & RISK ASSESSMENT COMPLETION



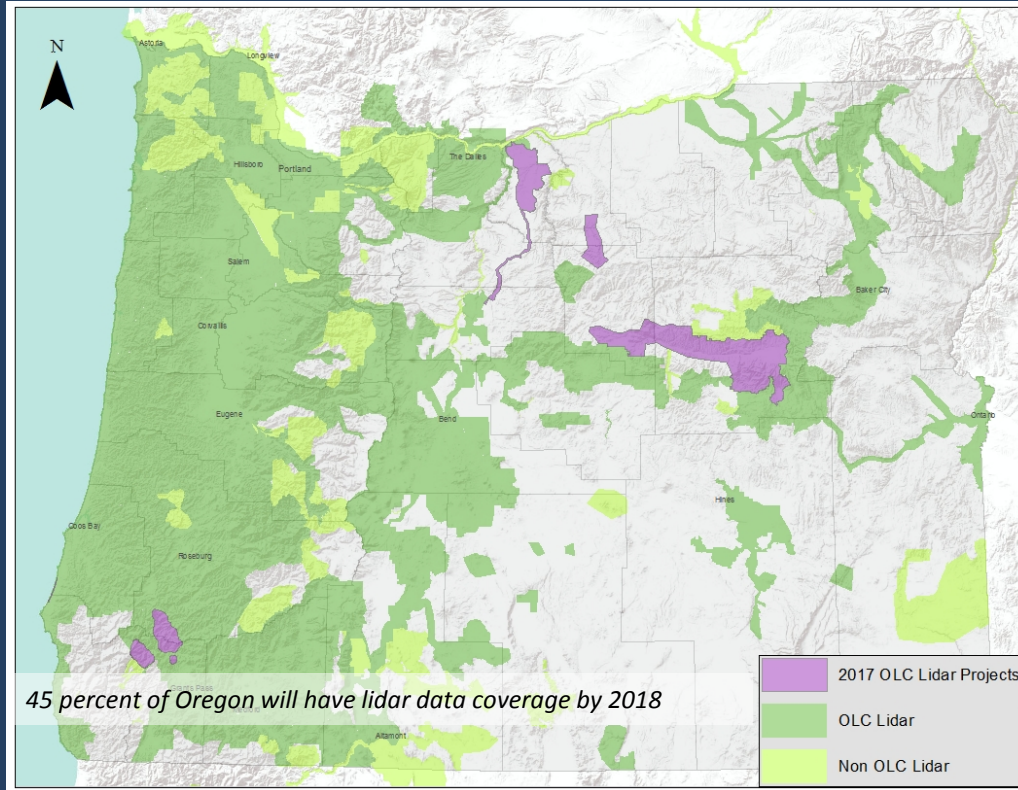
*What's Achieved: Oregon communities have accurate, detailed natural hazard and risk assessments to help plan for future disasters and improve their resilience*

*How Progress is Measured: All Oregon cities have complete data*

*Connection to Strategic Framework: Natural Hazards Focus Area*



# LIDAR DATA COMPLETION



**What's Achieved:** Collects the lidar topographic data used for mapping, monitoring and managing infrastructure, agriculture, natural hazards and resources

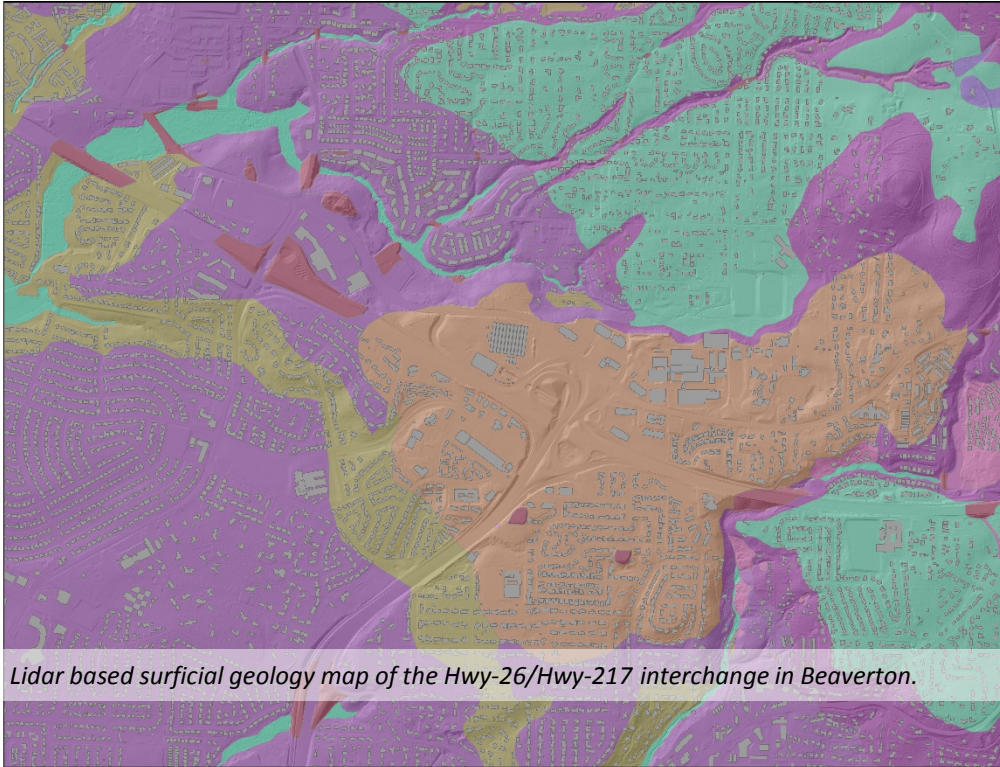
**How Progress is Measured:** Percentage of state with lidar coverage

**Connection to Strategic Framework:** Earth Science, Natural Hazards Focus Areas





# DETAILED GEOLOGIC MAP COMPLETION



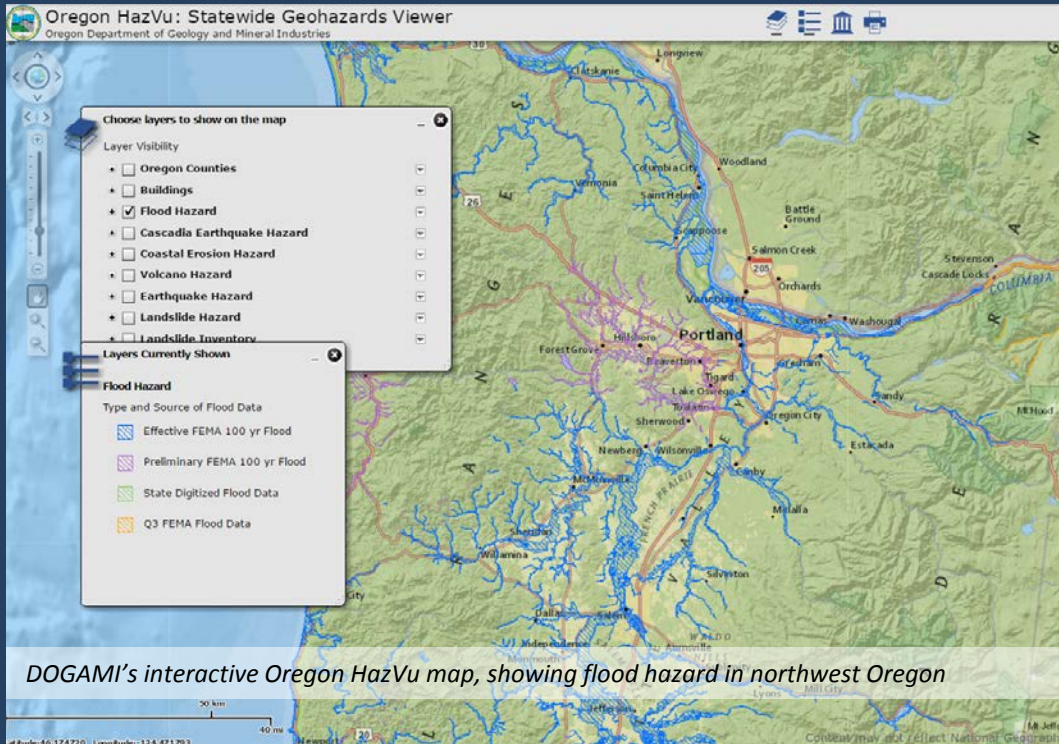
**What's Achieved:**  
*Development of geologic maps essential to understand natural hazards & resources, and mineral resource potential*

**How Progress is Measured:**  
*Percentage of state's inhabited areas with high-resolution maps*

**Connection to Strategic Framework:** *Earth Science, Natural Hazards Focus Areas*



# ACCESSIBILITY OF DOGAMI INFORMATION



*What's Achieved: Increases access to current and historic data collections through creation of new website, digitizing library collections, and keeping online databases current*

*How Progress is Measured: Completion of web, library, database projects*

*Connection to Strategic Framework: Outreach & Education Focus Area*

DOGAMI's interactive Oregon HazVu map, showing flood hazard in northwest Oregon



# PERMITTED SITES INSPECTED BIENNIALLY



Stormwater control system at Graves Quarry in Molalla

***What's Achieved:*** Proactive inspection of surface mining sites to help prevent off-site impacts or violations, and build positive relations with operators

***How Progress is Measured:*** Percentage of permitted active sites inspected

***Connection to Strategic Framework:*** Resource Management Focus Area



Continuing KPM #10

# CUSTOMER SERVICE



***What's Achieved:*** Helps ensure services provided by DOGAMI meet customer needs and expectations, and identifies opportunities for improvement

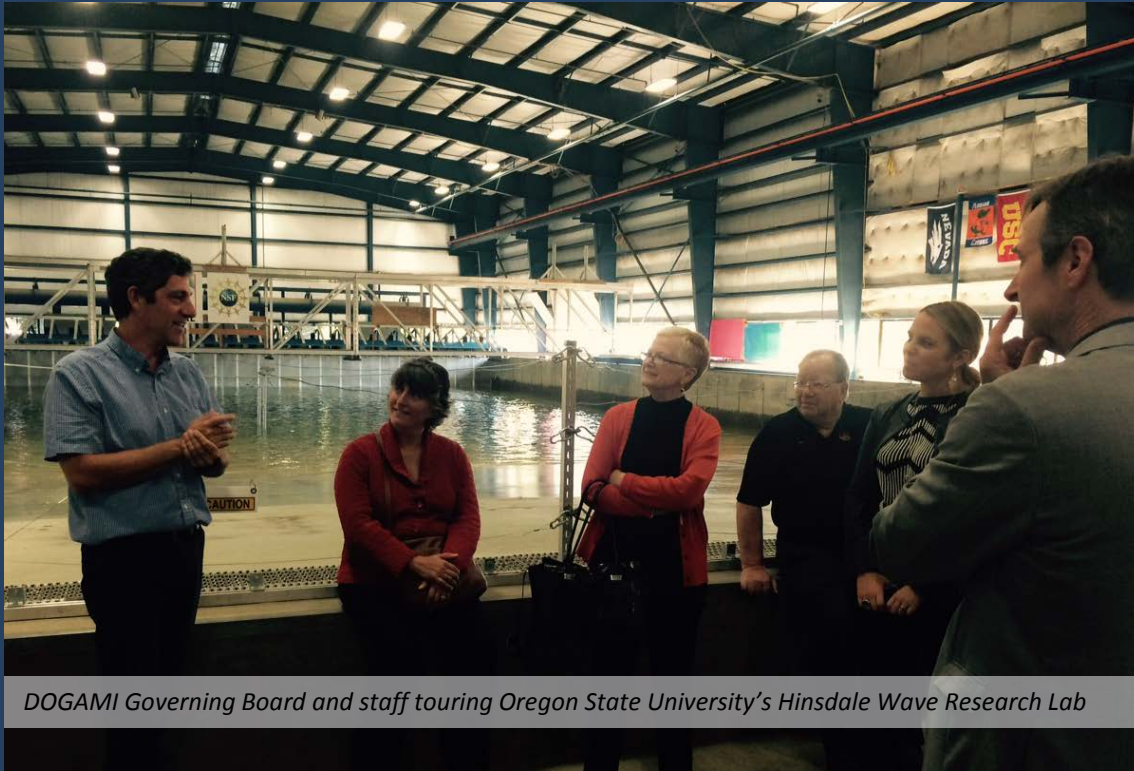
***How Progress is Measured:*** Percentage of customers rating satisfaction with Agency services as very good or excellent

***Connection to Strategic Framework:*** Governance & Operations Focus Area

*DOGAMI leading an Oregon Society of Soil Scientists field trip at Smith Rock State Park*



# GOVERNANCE



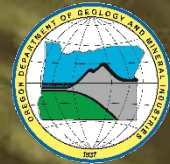
DOGAMI Governing Board and staff touring Oregon State University's Hinsdale Wave Research Lab

***What's Achieved:*** Helps ensure Agency operations meet best practices, and identifies opportunities for improvement

***How Progress is Measured:*** Annual assessment by DOGAMI Governing Board

***Connection to Strategic Framework:*** Governance & Operations Focus Area





# 2017-2019

**BUILDING A STRONG AGENCY FOUNDATION TO  
DELIVER SCIENCE & STEWARDSHIP**

*Landslides and debris flows, Vernonia area, Columbia County. Lidar/aerial photo image: DOGAMI*

# BUDGET OUTCOMES

Strengthen the agency foundation to...



Progress measured by new KPMs

so that we can...



so that we can achieve:

**OVERALL OUTCOME:** Oregon communities are resilient to a Cascadia event, tsunamis, drought, wildfire and other natural hazards.

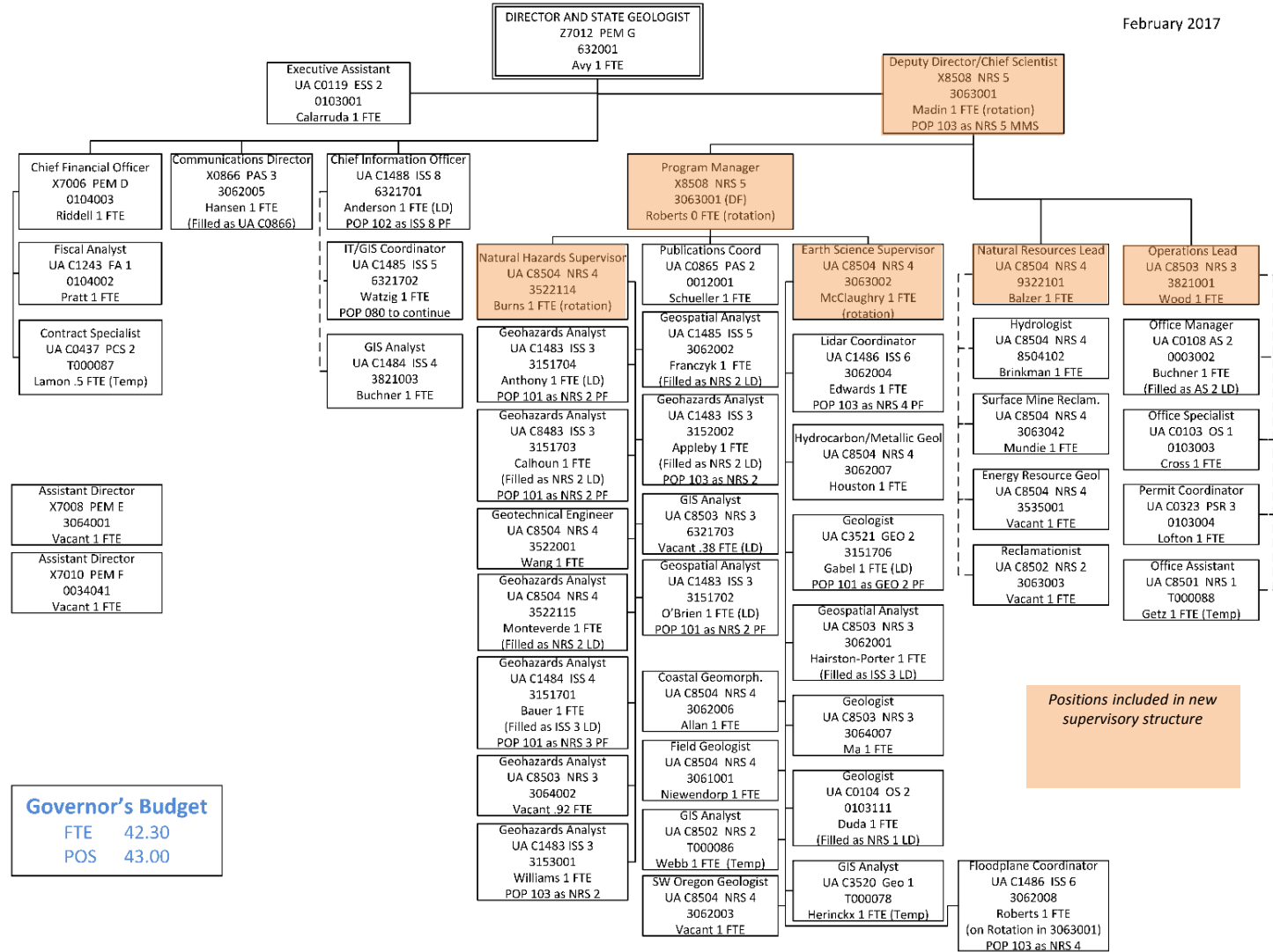


# STRENGTHENING OUR FOUNDATION

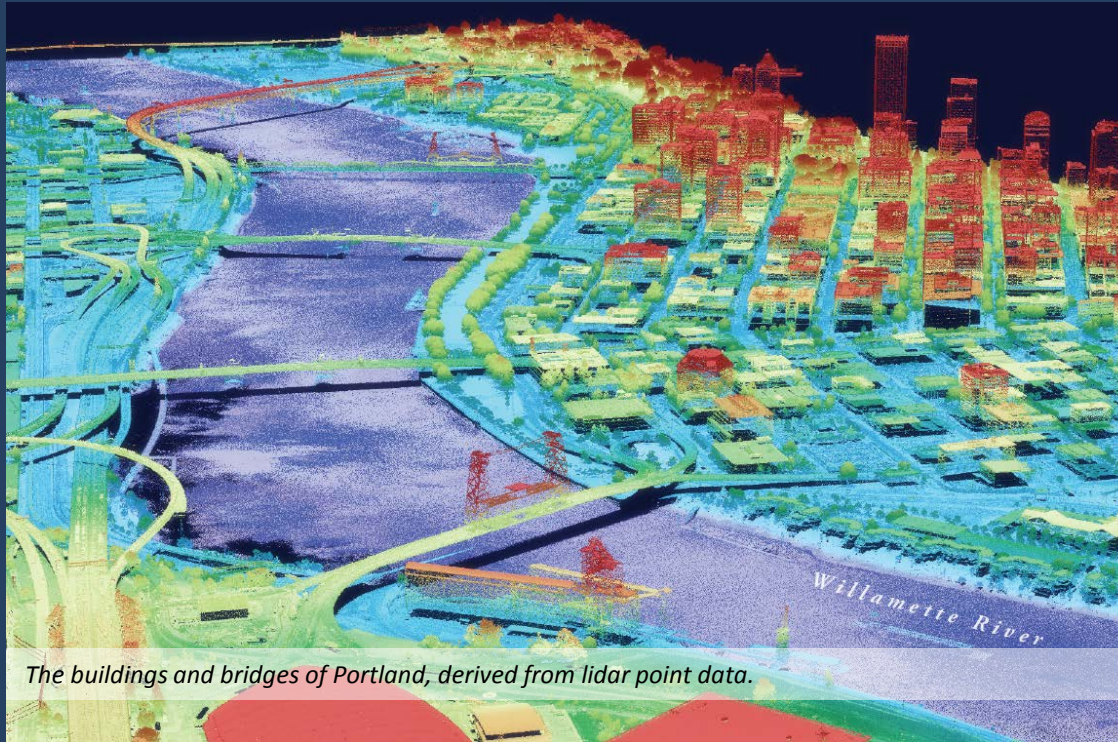
- To deliver science & stewardship in two programs:
  - **Geologic Survey & Services:** *Develops the practical scientific information critical for Oregon's communities, governments, businesses and public to understand our state's natural hazards and resources*
  - **Mineral Land Regulation & Reclamation:** *Permits and monitors extraction of mineral resources - including surface mining, oil and gas wells, and geothermal wells – and works to minimize impacts and maximize opportunities for reclamation of mined lands*







# BUILDING CAPACITY: POLICY PACKAGES



*Ensure sustainable information technology operations and increase access to information*

- *Continues implementation of IT remediation plan*
- *Authorizes permanent IT staff*
- *Improves Agency website*
- *Explores development of modern permitting and inspection systems for MLRR program*

**Policy Package: 102 –**  
*Hazard/Lidar IT Remediation*

**Policy Package: 080 –** *May 2016 E-Board Funding*



# PROVIDING SERVICES

- **Geologic Survey & Services Program**

- Services: *Studying hazards, geologic mapping, acquiring lidar data, outreach & education, providing data for practical and research applications*
- Clients: *All Oregonians – individuals, communities, state and federal agencies, organizations, universities, businesses*

- **Mineral Land Regulation & Reclamation Program**

- Services: *Mineral resource permitting, site inspections, proactive management of developing issues, ensuring return of mined land to beneficial use*
- Clients: *Mine operators and industry, local governments and communities, state and federal agencies*



# CONTINUING PARTNERSHIPS

- **Geologic Survey & Services Program**
  - Many partners across the state, including:
    - Communities and organizations: Helping ensure information is useful and put to use
    - Working groups and committees: Bringing information to hazard preparedness and mitigation
    - Universities: Practical hands-on experience for students, research collaborations
  - Oregon Lidar Consortium: 70+ partners to-date have leveraged collection of essential data for the state
  - GS&S business model depends on developing funding partnerships with federal, state, local agencies
- **Mineral Land Regulation & Reclamation Program**
  - Works with state, local partners to ensure effectiveness, efficiency of regulatory program
  - Best practices identified collaboratively with industry



# SUPPORTING SERVICES AND PARTNERSHIPS: POLICY PACKAGES

## *Policy Package: 101 – Hazard/Lidar Mapping for Local Governments*

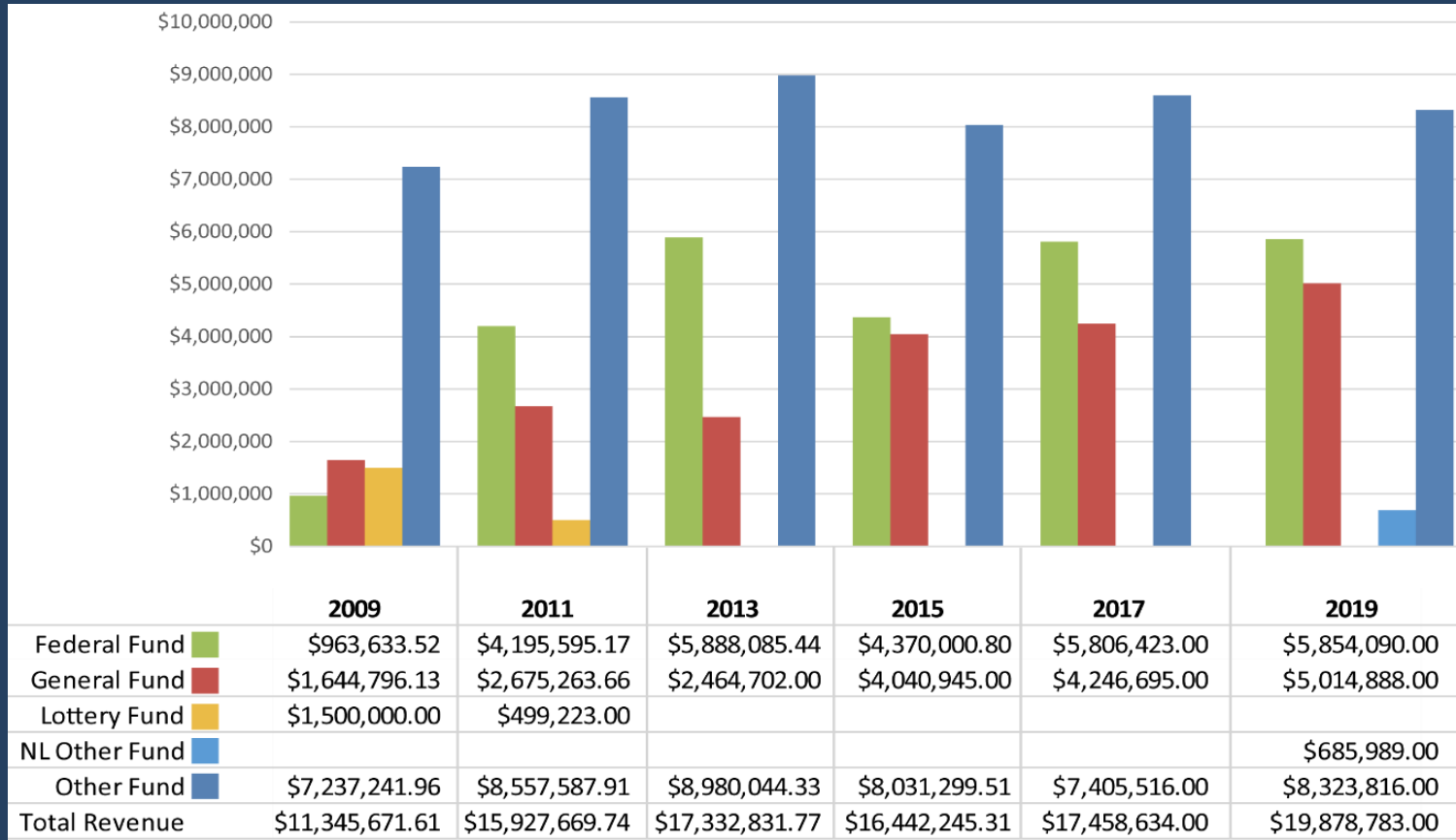
- Continues natural hazard and risk studies and lidar collection
  - *Maintains capacity and continuity for ongoing and new contracts by making 5 limited duration positions permanent*

## *Policy Package: 107 – Seismic Monitoring (Strong Motion Instrument Fund)*

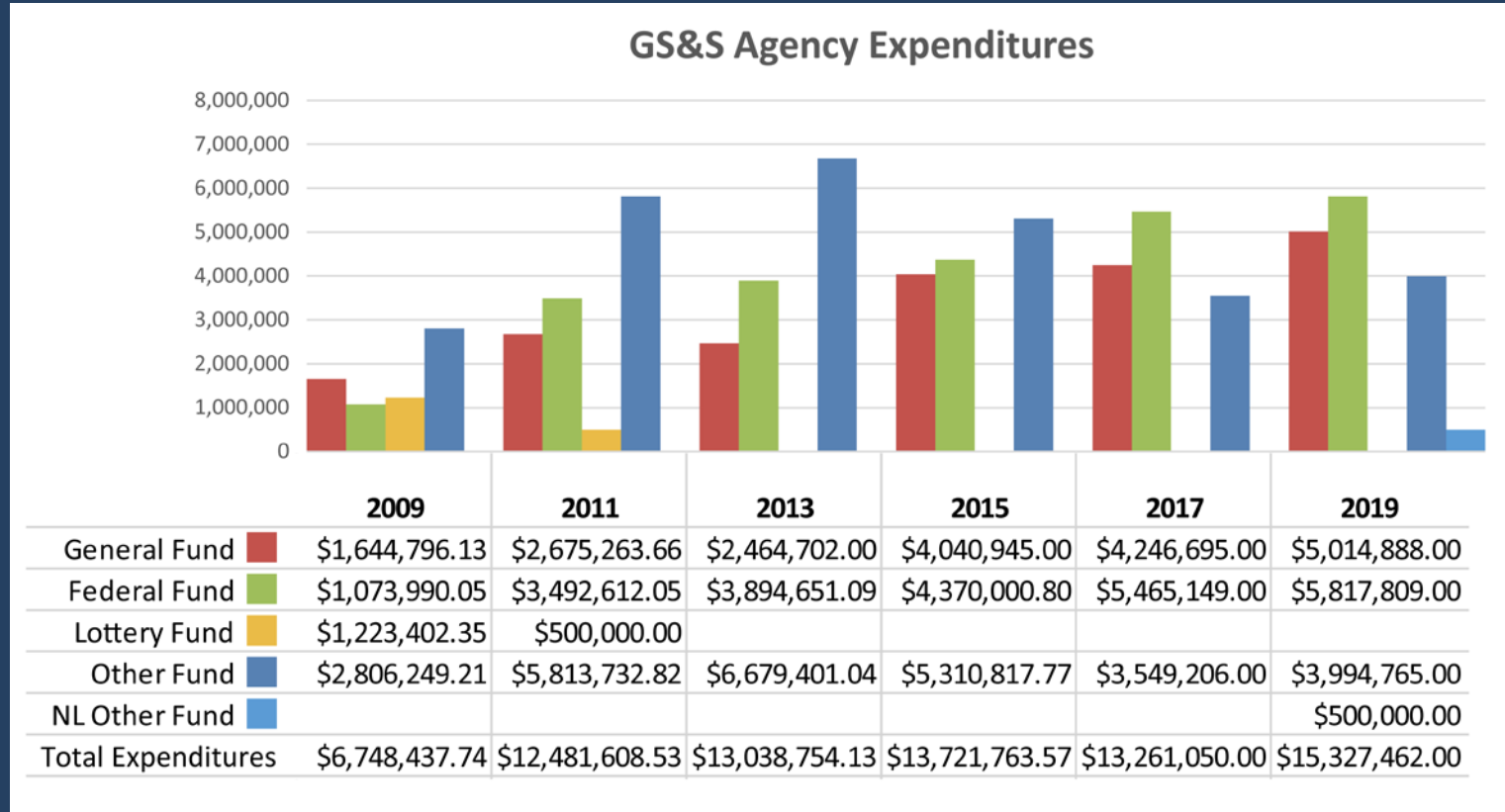
- Provides spending authority to make existing funds available for providing seismic instruments
  - *Ensures funds are able to be used to install new seismic instruments in Oregon*
  - *DOGAMI has partnered with University of Oregon to provide funds to support seismic network*



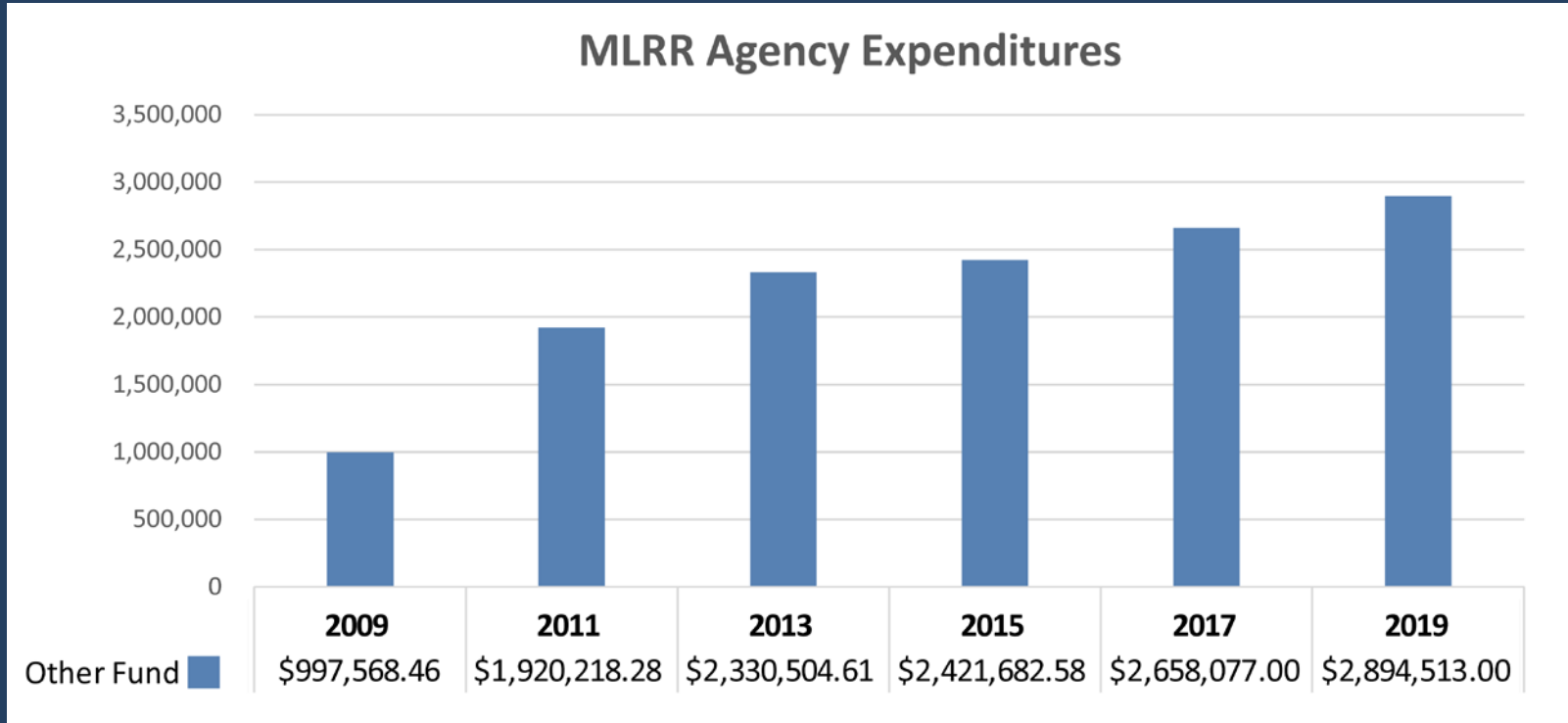
# AGENCY REVENUE PER BIENNIA



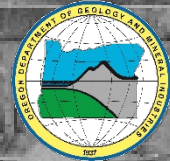
# GS&S EXPENDITURE PER BIENNIA



# MLRR EXPENDITURE PER BIENNIA







# LOOKING AHEAD

TAKING ACTION TO OVERCOME  
CHALLENGES OF THE PAST

*Oregon Bureau of Mines and Geology in the field. Photo: Oregon State Agricultural College*

# CHALLENGES

- Improving business practices
- Improving outdated IT practices
- In both programs, work is needed to:
  - Assess and improve service delivery
  - Assess funding needs and options



# 2017-2019 INITIATIVES

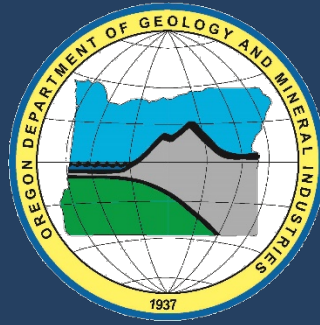
- Continued implementation of actions identified in the 2015 Business Practices Review
  - Developing practices to support long-term success of changes already in place
  - Examining GS&S program business model to identify essential services, options for funding and service delivery long-term
- Continued implementation of the Information Technology Remediation Plan
  - Ensuring protection of valuable agency information and sustainable IT operations
- Building operational efficiency, oversight, leadership capacity



# 2017-2019 INITIATIVES

- Increasing efficiency of MLRR operations
  - Identifying and implementing process improvements for permitting and monitoring of mineral, oil and gas, and geothermal sites
  - Comprehensive review to determine optimal operations, funding, staffing levels is underway
- Exploring improvements to MLRR service delivery
  - Researching options for modern, paperless permitting & inspection system for more efficient operations and effective customer service
  - Assessing funding options for development and implementation of a new system





# THANK YOU

## OREGON DEPARTMENT OF GEOLOGY AND MINERAL INDUSTRIES

*[www.OregonGeology.org](http://www.OregonGeology.org)*

*[@OregonGeology](https://www.facebook.com/OregonGeology)*

*[Facebook.com/OregonGeology](https://www.facebook.com/OregonGeology)*