

Wolf Management in Oregon

Committee on Agriculture and Natural Resources

January 14, 2016



Ron Anglin

Kevin Blakely

Oregon Department of Fish & Wildlife



History

- 1999 - First documented wolf in Oregon since extirpation
- 2003 – Extensive public process and Commission workshops
- 2005 – First Wolf Conservation and Management Plan
- 2008 – First documented wolf pack in Oregon
- 2010 – Wolf Plan review
- 2015 – Commission delisting decision

Wolf Conservation and Management Plan

■ Three-phased approach

■ Phase 1 – Conservation

- Four breeding pairs for three consecutive years

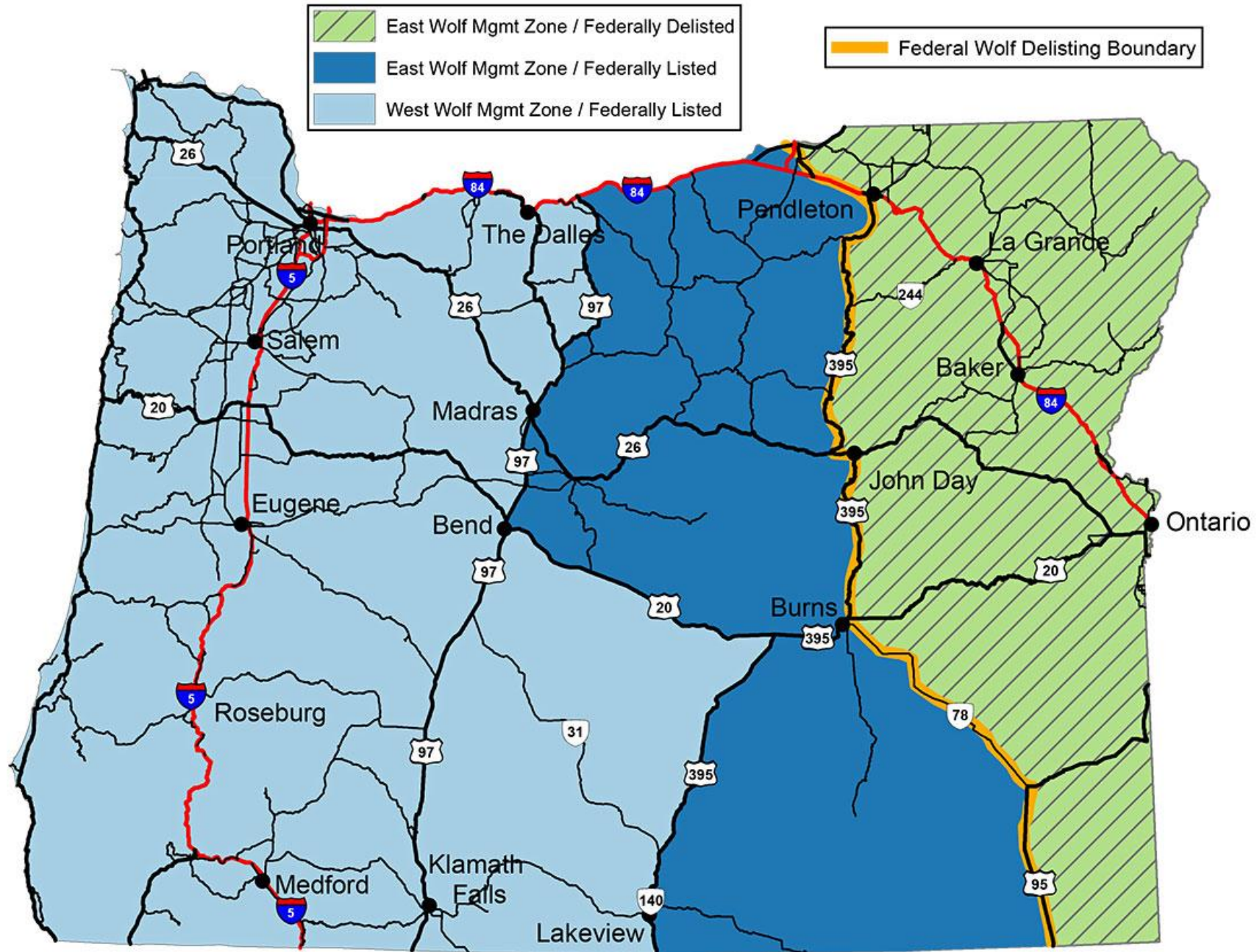
■ Phase 2 – Transition

- Consideration for delisting
- Seven breeding pairs for three consecutive years

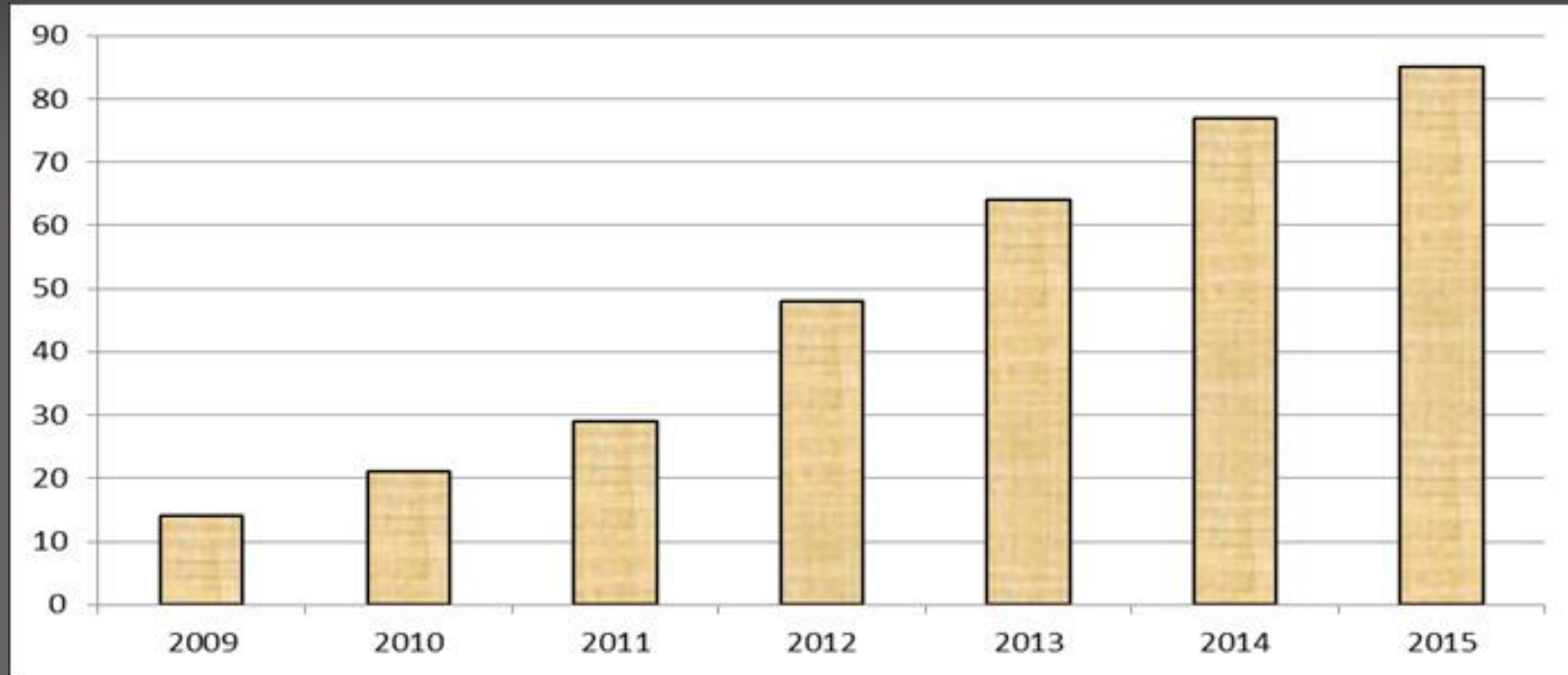
■ Phase 3 – Management

- Balanced management actions to remain above Phase 2 objectives
- Potential Pack Management to address conflict

Wolf Management Zones in Oregon



Population



Oregon minimum wolf population growth from 2009 through July 2015
(2015 population does not include pups of the year)

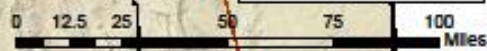


Areas of Known Wolf Activity

- Wolf Management Zone Boundary
- Wolf Use Area
- ▨ Estimated Wolf Use Area



November 2015



Delisting

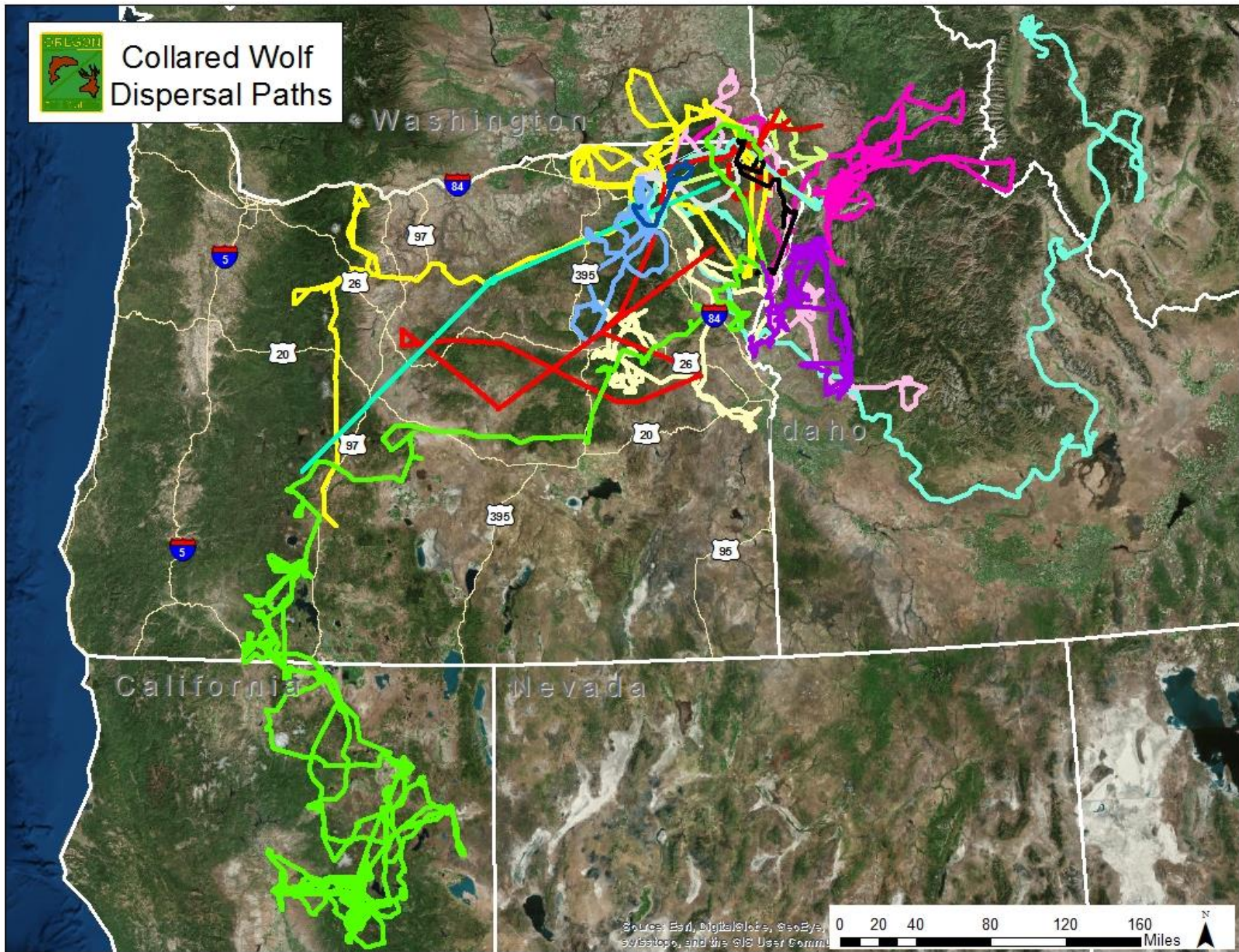
- Met Conservation Objective (at least four breeding pairs for three consecutive years) in January 2015
- Wolf Conservation and Management Plan directs Fish and Wildlife Commission to consider delisting
- Presented Biological Status Review in April 2015
 - Commission direction to initiate delisting proposal

Delisting

- Oregon ESA requires evaluating five criteria for delisting
 - Not in danger of extinction in any significant portion of its range in Oregon; and
 - Natural reproductive potential is not in danger of failure; and
 - Populations are not undergoing deterioration of range or primary habitat; and
 - No over-utilization of the species or its habitat; and
 - Regulatory certainty into the future



Collared Wolf Dispersal Paths



Source: Esri, DigitalGlobe, GeoEye, Earthstar, and the GIS User Community

0 20 40 80 120 160 Miles

Delisting

- October 2015
 - Updated biological status review
 - Initial evaluation of criteria for delisting
- Commission direction to evaluate three options for delisting
 - Entire state
 - Partial
 - No action

Delisting

- November 2015 – Fish and Wildlife Commission
 - Evaluated biological status review against delisting criteria
 - Considered public input
 - Determined that all delisting criteria had been met
 - Took action to delist statewide

Wolf Conservation and Management Plan Evaluation

- Briefing to Commission on proposed review process and timeline
 - Stakeholder input
 - Update biological information
 - Incorporate new science
 - Evaluate effectiveness of plan
 - Present to Commission in fall 2016
 - Public input opportunity