

Regional Healthy Communities Initiative:

Building CCO-Public Health Collaborations and Infrastructure to promote community health

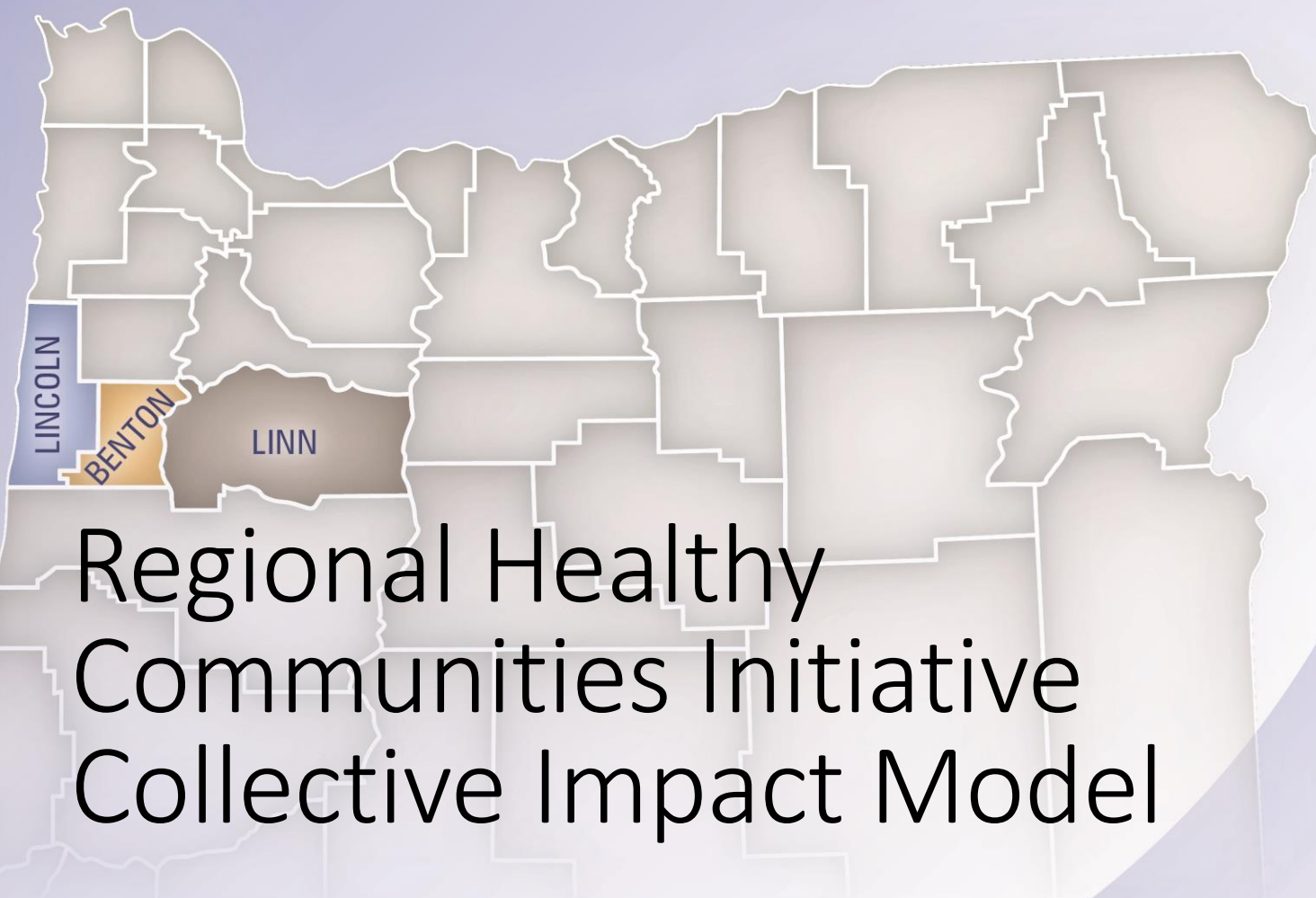
Ways and Means Committee on Human Services

April 30, 2015

Kim Whitley, MPH

Vice President and Chief of Operating Officer

InterCommunity Health Network Coordinated Care Organization



Regional Healthy Communities Initiative Collective Impact Model

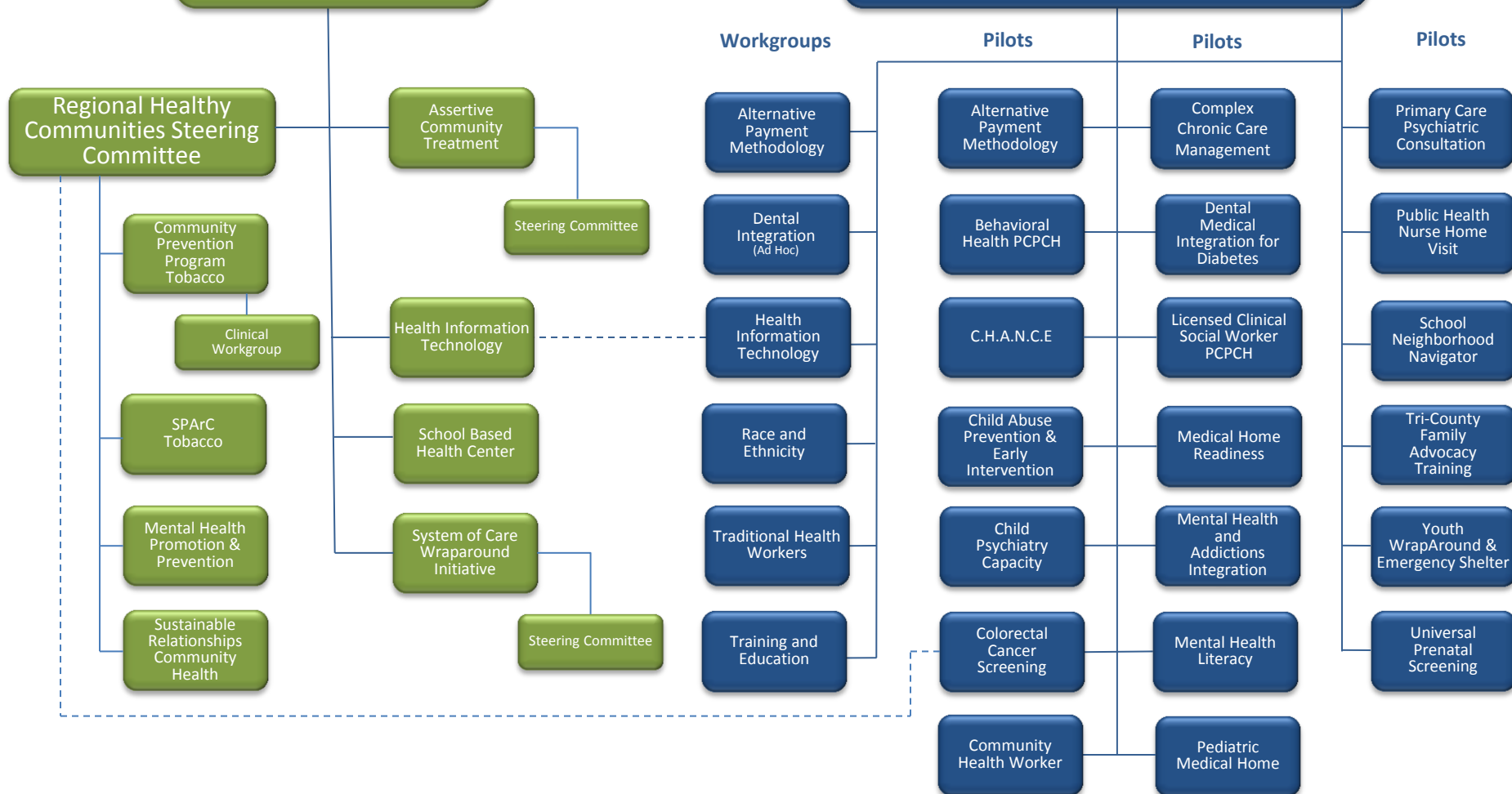
2015

IHN-CCO Transformation Department

InterCommunity
Health Network CCO

IHN-CCO Grants

IHN-CCO Delivery Systems Transformation



There are Five Conditions to Collective Impact Success

Common Agenda

All participants have a **shared vision for change** including a common understanding of the problem and a joint approach to solving it through agreed upon actions

Shared Measurement

Collecting data and measuring results consistently across all participants ensures efforts remain aligned and participants hold each other accountable

Mutually Reinforcing Activities

Participant activities must be **differentiated while still being coordinated** through a mutually reinforcing plan of action

Continuous Communication

Consistent and open communication is needed across the many players to build trust, assure mutual objectives, and appreciate common motivation

Backbone Support

Creating and managing collective impact requires a separate organization(s) with staff and a specific set of skills to **serve as the backbone for the entire initiative and coordinate participating organizations and agencies**

Regional Healthy Communities Steering Committee

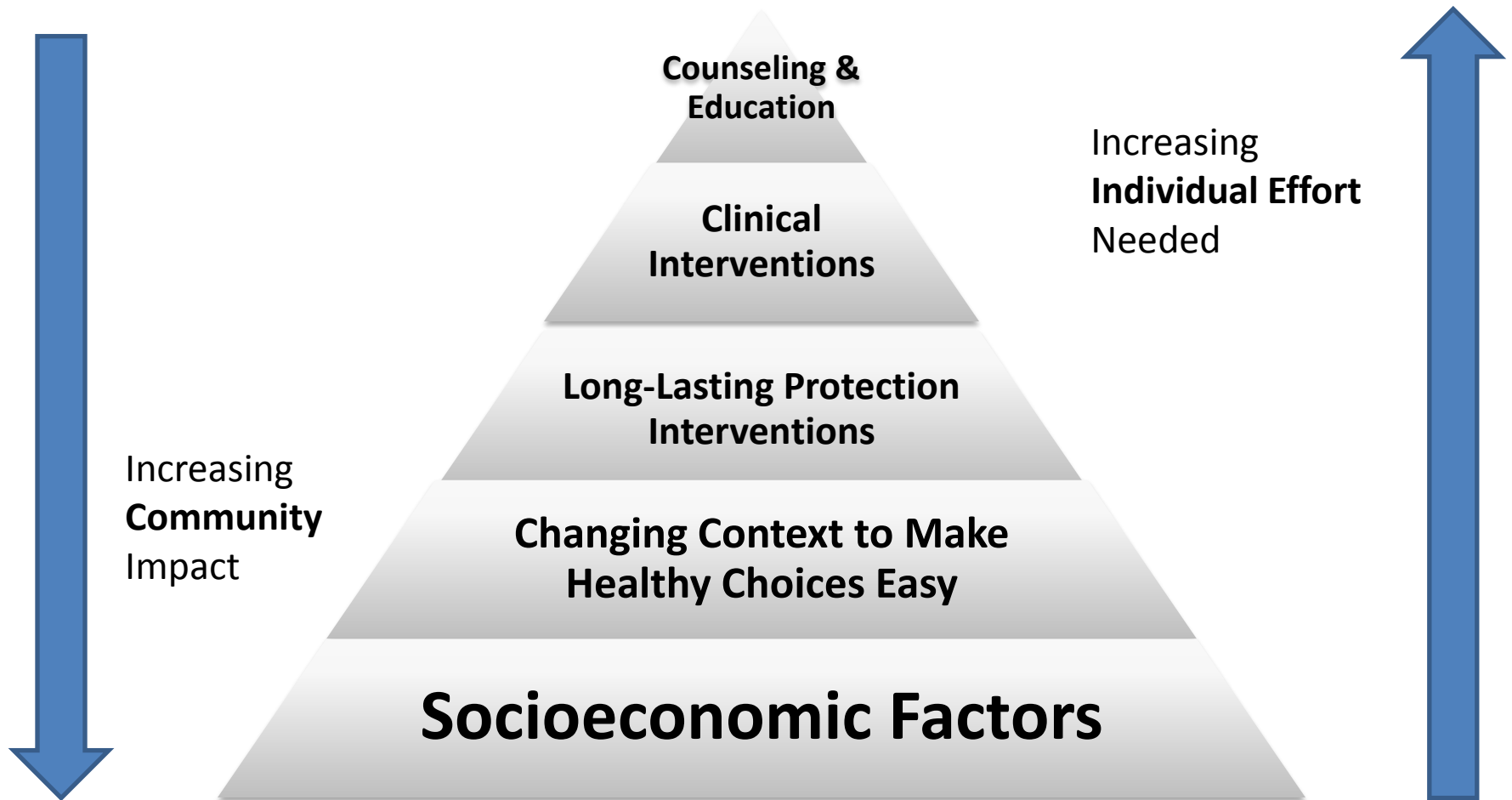


Identifying Key Health Issues

- County and IHN-CCO Community Health Assessments
- Prioritized areas in Community Health Improvement Plans and other key stakeholder plans
- Inventory of regional tobacco prevention past and current efforts



Factors that Impact Health



Tobacco Intervention Areas

Health insurance benefits:

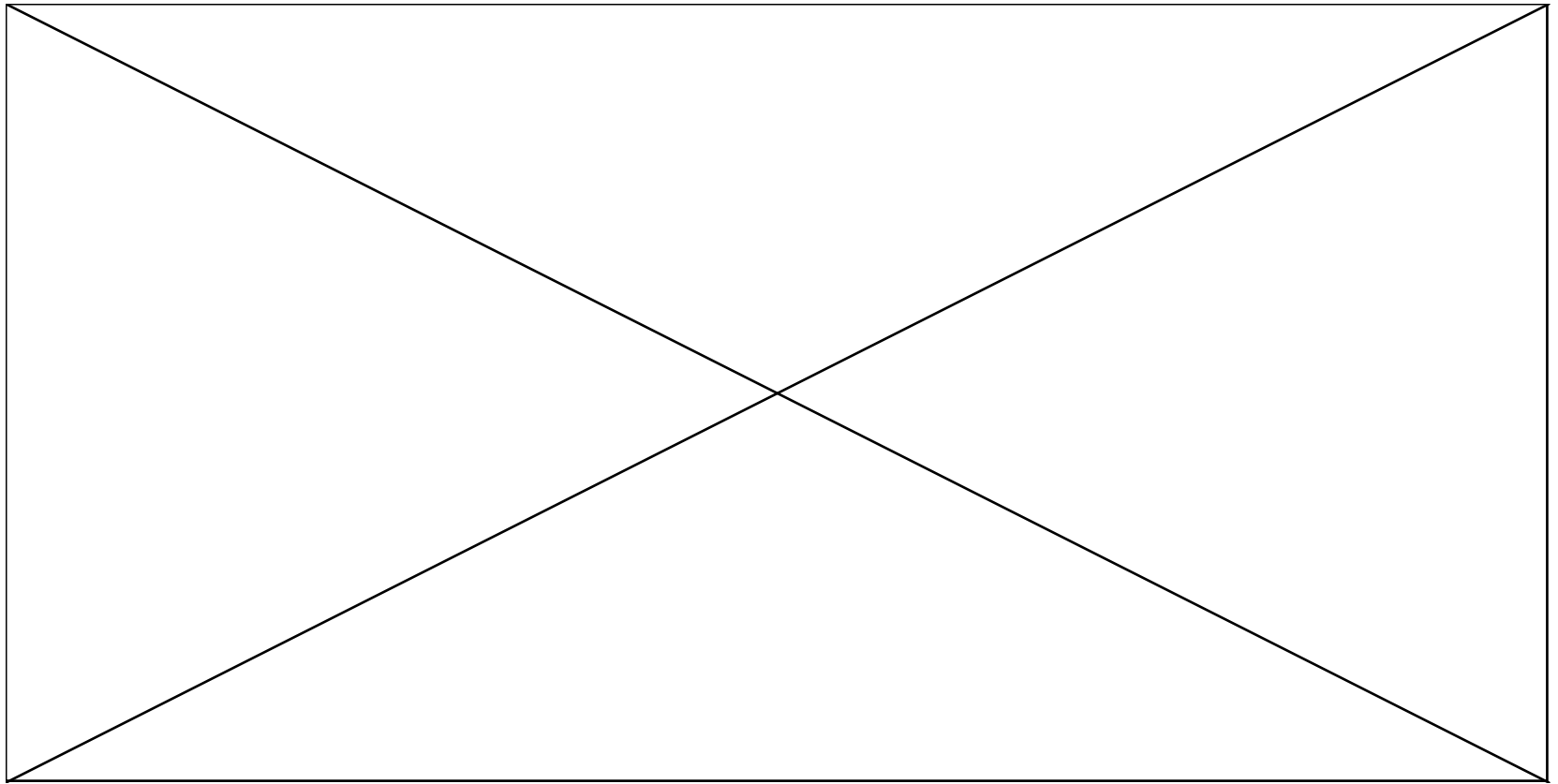
- Improved health insurance benefits

Health system:

- Tobacco-free hospital campus
- Systematic tobacco screening & referral
- Reduce smoking among pregnant women

Community:

- Smokefree housing
- Tobacco-free social service agencies
- Smokefree workplace expansion
- Increasing the price of tobacco



Public Health Division
Health Promotion and Chronic Disease Prevention Section