

2012 REPORT ON THE OREGON WORKERS' COMPENSATION SYSTEM

Figure 5. Claims process flowchart

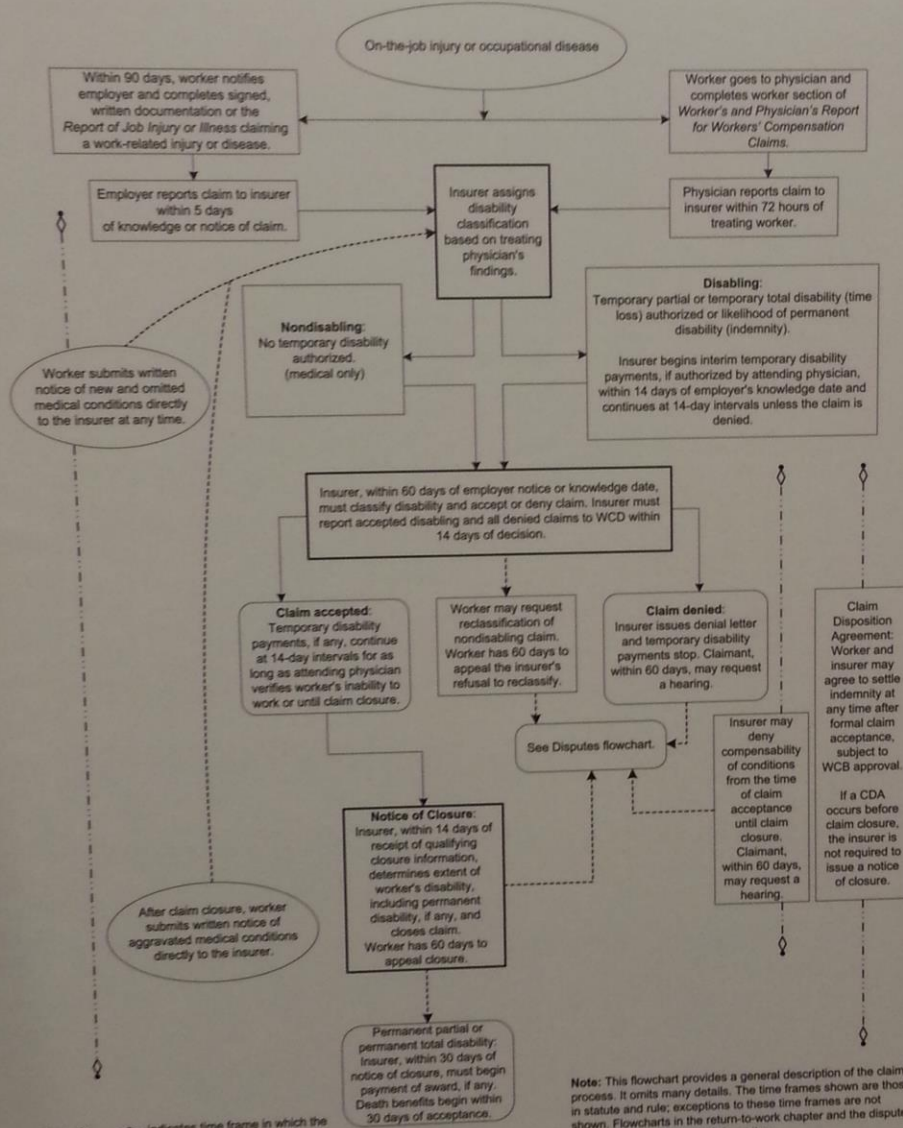
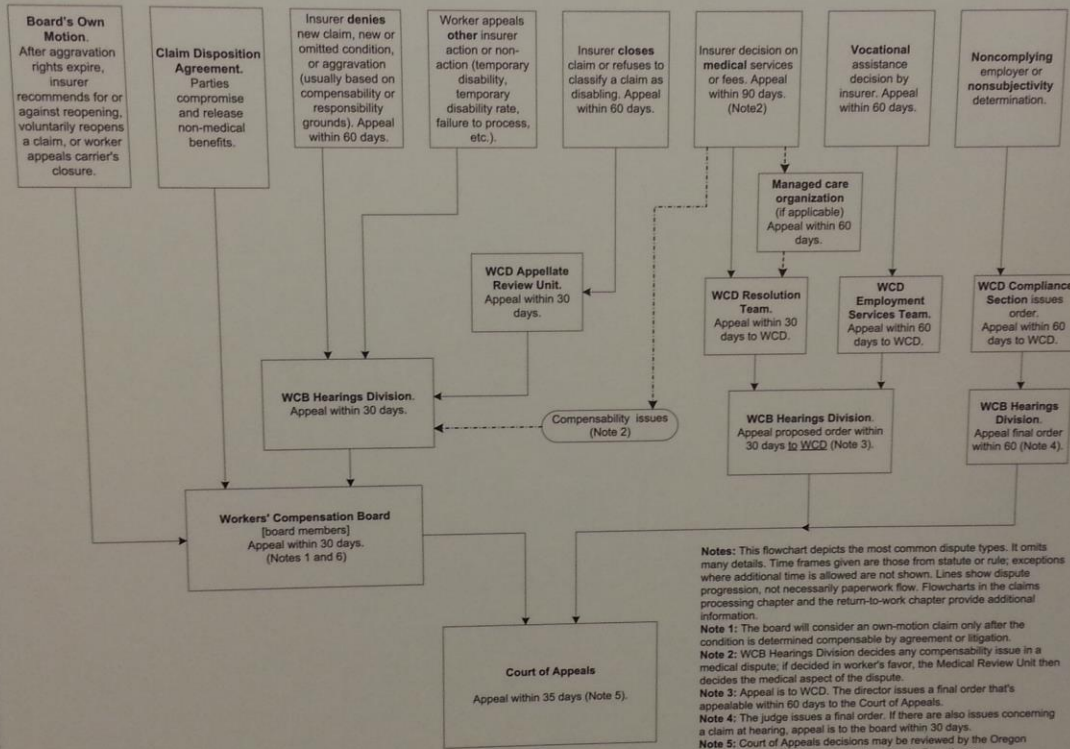


Figure 12. Disputes flowchart



The - - - - - and - - - - - lines indicate potential path of process.

Notes: This flowchart depicts the most common dispute types. It omits many details. Time frames given are those from statute or rule; exceptions where additional time is allowed are not shown. Lines show dispute progression, not necessarily paperwork flow. Flowcharts in the claims processing chapter and the return-to-work chapter provide additional information.

Note 1: The board will consider an own-motion claim only after the condition is determined compensable by agreement or litigation.

Note 2: WCB Hearings Division decides any compensability issue in a medical dispute; if decided in worker's favor, the Medical Review Unit then decides the medical aspect of the dispute.

Note 3: Appeal is to WCD. The director issues a final order that's appealable within 60 days to the Court of Appeals.

Note 4: The judge issues a final order. If there are also issues concerning a claim at hearing, appeal is to the board within 30 days.

Note 5: Court of Appeals decisions may be reviewed by the Oregon Supreme Court, but the high court's review is discretionary.

Note 6: Alternatively, the mediating administrative law judge may approve a CDA. Only CDA disapprovals are appealable to the courts.

2012 REPORT ON THE OREGON WORKERS' COMPENSATION SYSTEM

Figure 5. Return-to-work flowchart

