



Oregon Military Department Office Of Emergency Management

Dave Stuckey, OMD Deputy Director

Andrew Phelps, OEM Director

Sean McCormick, Policy Advisor



Oregon Office of Emergency Management



Oregon has safe and resilient communities



Lead statewide efforts to develop and enhance preparedness, response, recovery and mitigation capabilities to protect the lives, property and environment of the whole community.

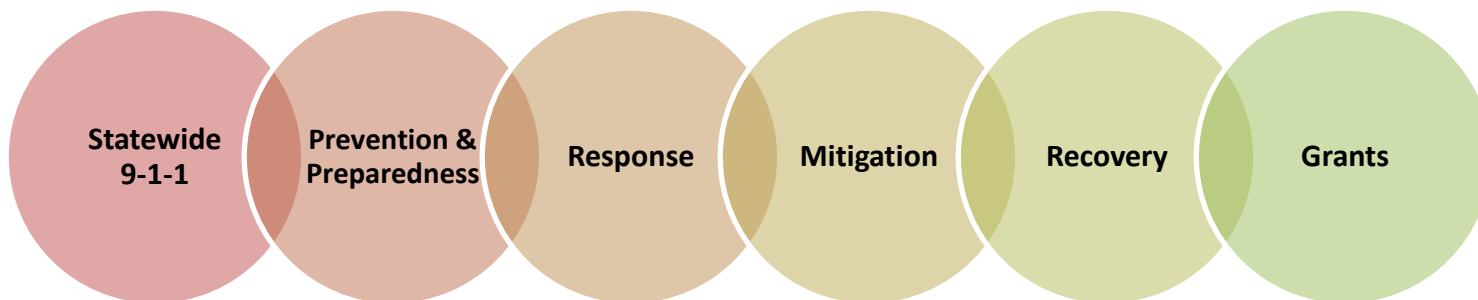


Customer Service
Professionalism
Teamwork
Innovation
Respect
Opportunity



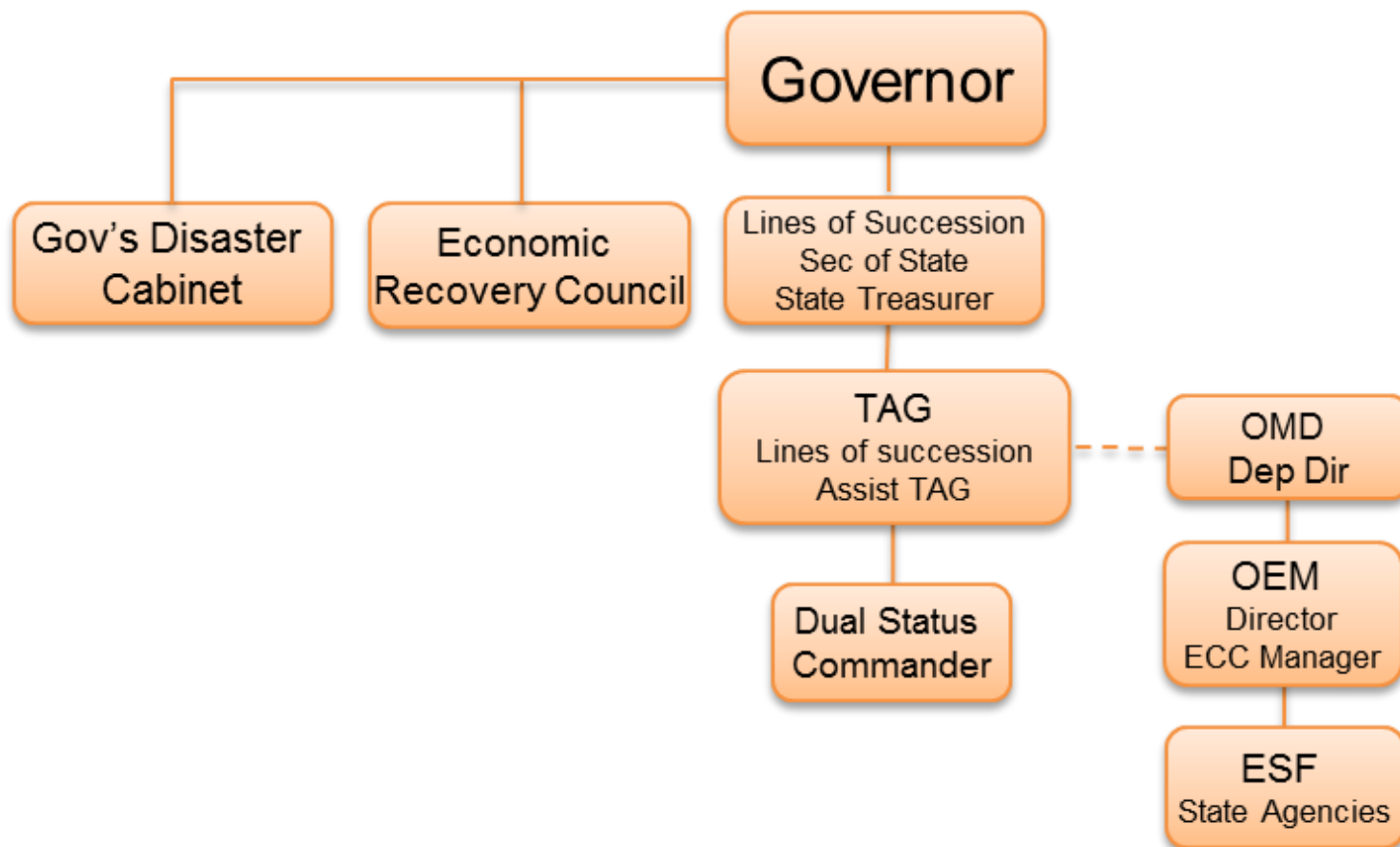
About OEM

- Protecting lives, property and environment in Oregon
- Lead statewide efforts to develop and enhance preparedness, response, recovery and mitigation capabilities
- Focus on whole community solutions
- Coordination, Collaboration, Communication





State Emergency Management Structure

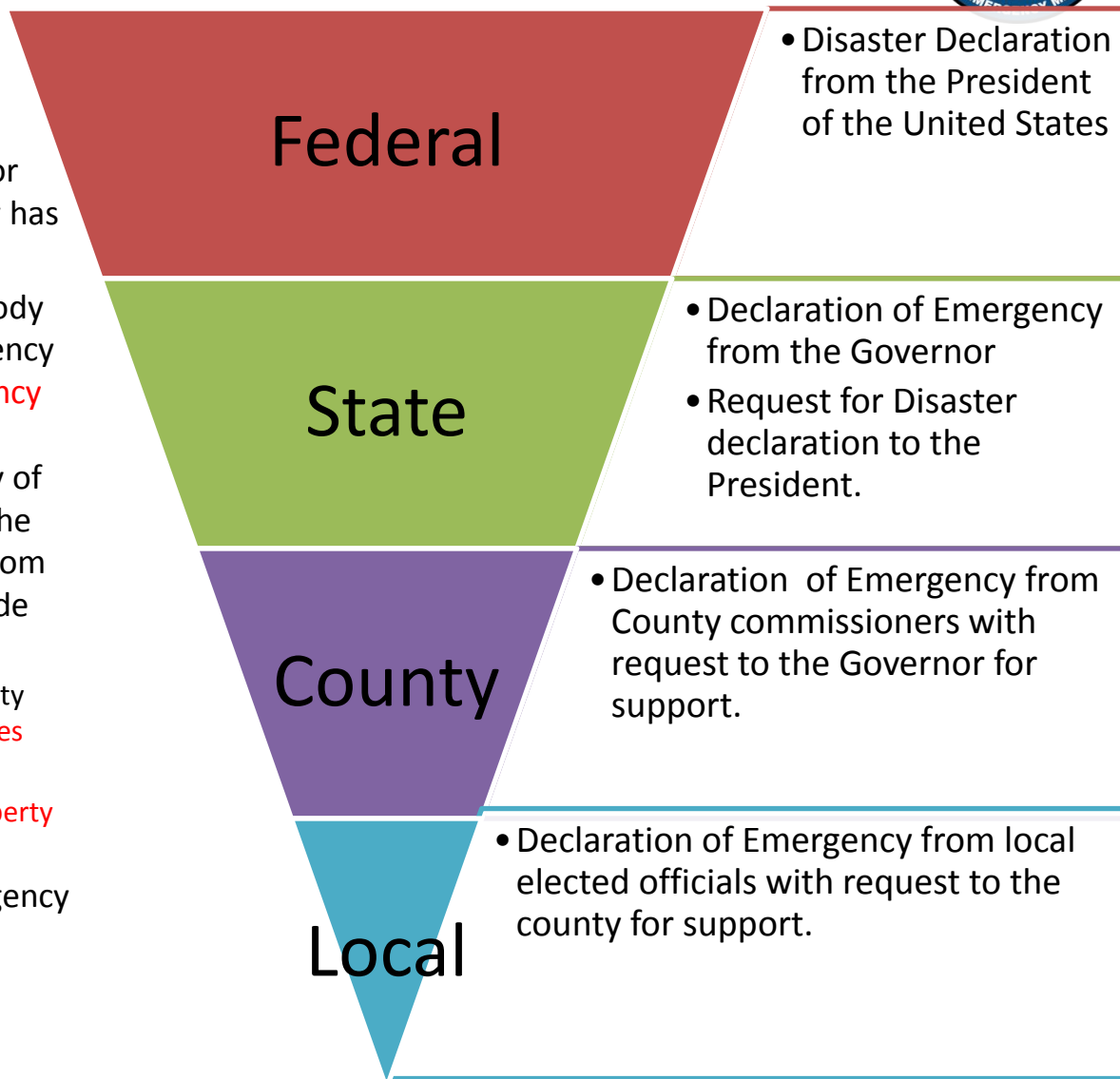




Declaration of Emergency



1. The Governor may declare a state of emergency by proclamation at the request of a county governing body or after determining that an emergency has occurred or is imminent.
2. **All requests** by a county governing body that the Governor declare an emergency shall be **sent to the Office of Emergency Management**. **Cities must submit requests through the** governing body of the **county** in which the majority of the city's property is located. Requests from counties shall be in writing and include the following:
 - (a) A certification signed by the county governing body that **all local resources have been expended**; and
 - (b) A preliminary **assessment of property damage or loss, injuries and deaths**.
5. Any proclamation of a state of emergency **must specify the geographical area** covered by the proclamation...





ORS 401 Emergency Powers

Major Components



- **401.168 Governor's powers during state of emergency; suspension of agency rules.**
- **401.175 Additional powers during emergency**
- **401.178 Removal of disaster debris or wreckage; unconditional authorization of community; liability for injury or damage.**
- **401.185 Providing temporary housing during emergency.**
 - With concurrence of Ways & Means or E-Board
- **401.186 Waiver of waiting period for unemployment benefits.**
- **401.188 Management of resources during emergency; rules.**
- **401.232 Federal financial assistance to political subdivision.**
- **401.234 Federal financial assistance to individuals or families**
 - With concurrence of Ways & Means or E-Board
- **401.505 Acceptance of aid for emergency services.**
- **401.525 Use of moneys and property for emergency services authorized.**
 - With concurrence of Ways & Means or E-Board



Potential Hazards to Oregon

Natural Hazards



- ☐ Flood
- ☐ Earthquake
- ☐ Tsunami
- ☐ Wildland Fire
- ☐ Severe Winter Storms
- ☐ High Winds
- ☐ Tornadoes
- ☐ Medical Epidemic

Other Hazards



- ☐ Cyber Incidents
- ☐ Hazardous Materials
- ☐ Urban Fire
- ☐ Dam Failure
- ☐ Nuclear Power Plants
- ☐ Civil Disturbance
- ☐ Terrorism
- ☐ Transportation Accident



How does Emergency Management Work in Oregon?

- All disasters begin and end locally
- Notifications and activations
- Response and scene stabilization
- Assessment
- Resource allocation
- Deploy local resources
- Employ mutual aid
- Request Assistance



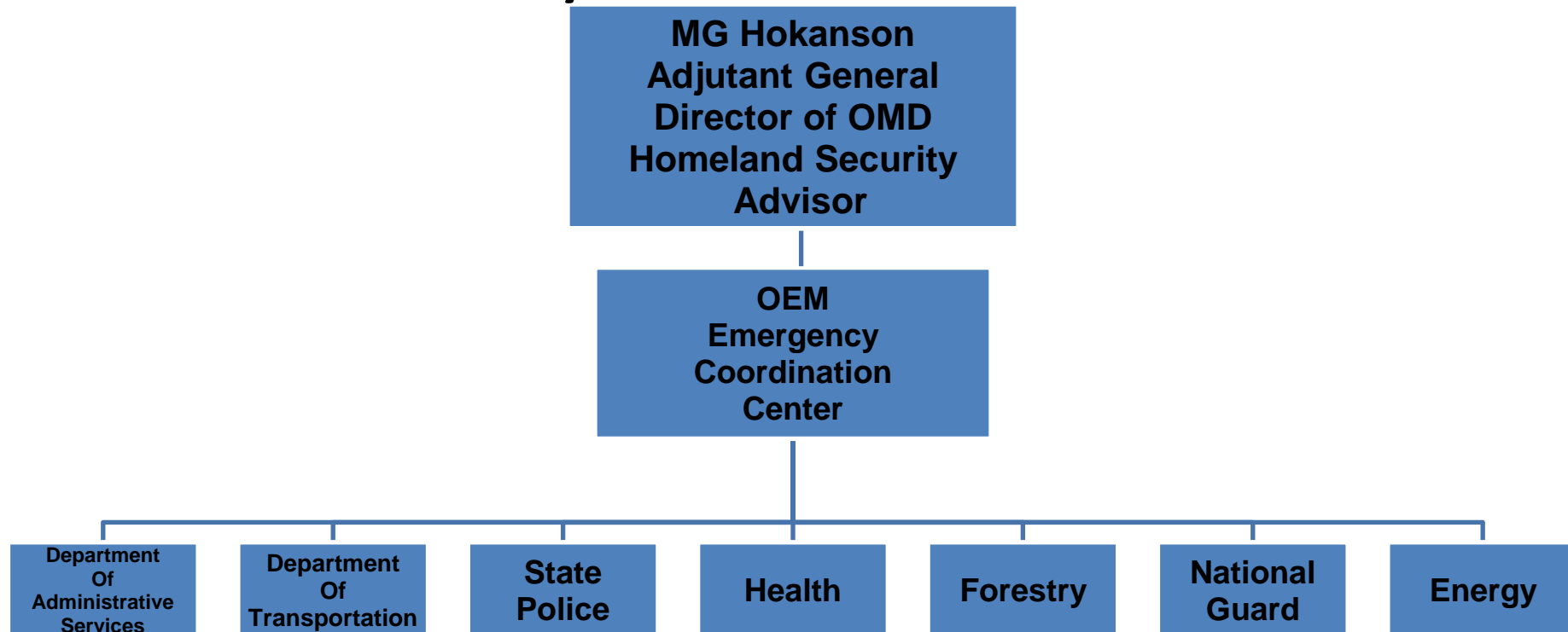
Ladder of Assistance

- Local
- County
- State
- Federal





OMD and OEM Synchronization



- State agencies are part of the “whole picture” – 22 State Agencies comprise the OERS Council
- Coordinate closely with Oregon National Guard



State OERS Council Partnership

1. Department of Consumer and Business Services
2. Department of Corrections
3. Department of Environmental Quality
4. Department of Human Services
5. Department of Justice
6. Department of Land Conservation and Development
7. Department of State Police
8. Department of Transportation
9. Judicial Department
10. Oregon Department of Administrative Services
11. Oregon Department of Aviation
12. Oregon Health Authority
13. Public Utility Commission of Oregon
14. State Department of Agriculture
15. State Department of Energy
16. State Department of Fish and Wildlife
17. State Department of Geology and Mineral Industries
18. State Fire Marshal
19. State Forestry Department
20. State Marine Board
21. State Parks and Recreation Department
22. Water Resources Department



Oregon Emergency Response System (OERS)



OERS
1-800-452-0311

Established in
1972 by
Governor

- First of its kind in the nation
- Written into ORS Statute
- Operated by Oregon State Police

Primary
notification of
an emergency
or disaster

- Always available
- Answered by a live call taker

One stop 24
hour intake for
state agencies

- All hazards incidents
- Assign incident number

Maintains the
ECC in a
“warm”
condition

- Answered by live call takers
- Immediate contact to OEM Executive Duty Officer

OERS Council
consists of 22
state agencies

- Transportation
- DEQ
- Police
- Health
- Fire Marshal
- Forestry
- Public Utilities
- Energy
- DAS
- National Guard



Emergency Operations Plan (EOP)



- Emergency Operations Plan
 - Applicable to all hazards that affect the State
 - Framework to guide the efforts of the State to respond to and initiate recovery from major emergencies.
 - Defines roles and responsibilities of state agencies
 - Documents agreements and procedures for response
 - Organized by Emergency Support Functions (ESF)
 - 36 Counties / 9 tribes / 95 Cities have EOPS on file with OEM

State of Oregon EMERGENCY OPERATIONS PLAN



Publication Date: July 2010
Latest Revision Date: March 2014

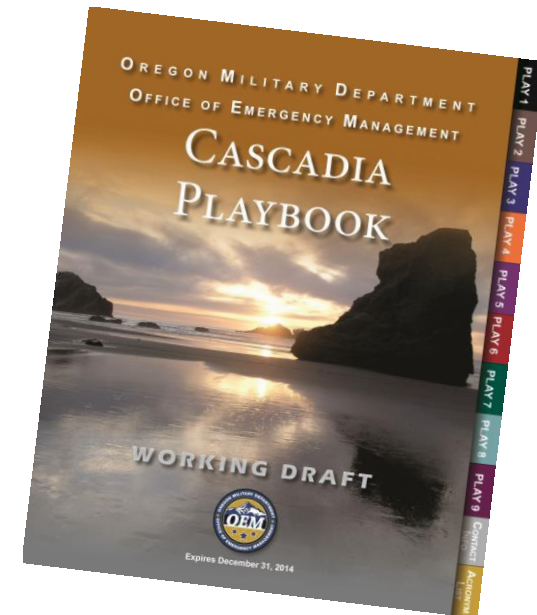


Oregon Office of Emergency Management
3225 State Street
Salem, Oregon 97301
503-378-2911



Cascadia Playbook

- Governor Kicked off Cascadia Playbook Sept 9, 2014
- Syncs up all State Agencies' response efforts
- Covers the initial response timeframe of the first 14 days of the event
- Reflects content from Oregon Cascadia Subduction Zone Plan and FEMA Region X's Cascadia Execution Checklist as source content
- Focuses on action items to create a punch list of missions for each "play"
- Is organized by Essential Support Function (ESF) – State Agencies, non-governmental partners, subject matter experts
- Supports existing plans developed by cities, counties, and federal agencies
- Presents actions in a streamlined, easy-to-navigate, flip-chart style document





Initial response in the event of ...

DISASTER EVENT!

<ul style="list-style-type: none"> Initial Notification Emergency Declarations Activate OERS Succession / Authorities 	<ul style="list-style-type: none"> Life Safety Missions Search and Rescue Medical Care Scene Stabilization Emergency Communications 	<ul style="list-style-type: none"> Establish Contact with Affected Area Establish Lifeline Routes Assess Impacts / Damage 	<ul style="list-style-type: none"> Establish Shelters Transport Displaced People Vulnerable Populations Medical Care at Shelters Mass Feeding Animal Care 	<ul style="list-style-type: none"> Initiate Resource Requests Establish State Staging Areas Locate / Receive Supplies Points of Distribution 	<ul style="list-style-type: none"> Identify Critical Service Outages Prioritize Emergency Repairs Contingency Plans Emergency Contracting DMORT Operations 	<ul style="list-style-type: none"> Mobilize Heavy Equipment and Personnel Clear debris Repair Essential Systems JIC Operations 	<ul style="list-style-type: none"> Receive Federal Resources Expedite out-of-area Utility Repair Crews Volunteers and Donated Goods Track Federal Assets and Activation Levels 	<ul style="list-style-type: none"> Community Planning Needs Identify Recovery Priorities Begin Restoring Community Services Identify Human Services Needs Begin Restoring Critical Systems
PLAY 1	PLAY 2	PLAY 3	PLAY 4	PLAY 5	PLAY 6	PLAY 7	PLAY 8	PLAY 9
Notification, Activation and Authorities	Life Safety	Damage Assessment	Mass Care and Sheltering	Logistics and Resource Management	Planning and Prioritization	Emergency Repairs	Outside Assistance	Begin Recovery
(0 – 30 min)	(0 – 72 hrs)	(1 – 72 hrs)	(6 hrs – 30+ days)	(12 hrs – 30+ days)	(18 hrs – 30+ days)	(20 hrs – 7 days)	(1 – 30+ days)	(8 – 180+ days)



State Recovery Plan



- State Recovery Plan
 - Applicable to all hazards that affect the State
 - Framework to guide the efforts of the State to recovery from disasters.
 - Defines roles and responsibilities of state agencies
 - Identifies recovery levels to allow for scalable recovery
 - Organized by State Recovery Functions

State of Oregon
EMERGENCY MANAGEMENT PLAN



VOLUME IV:
STATE OF OREGON RECOVERY PLAN

DECEMBER 2014

Emergency Mgt. Functions

State Agency Interface with OEM Structures



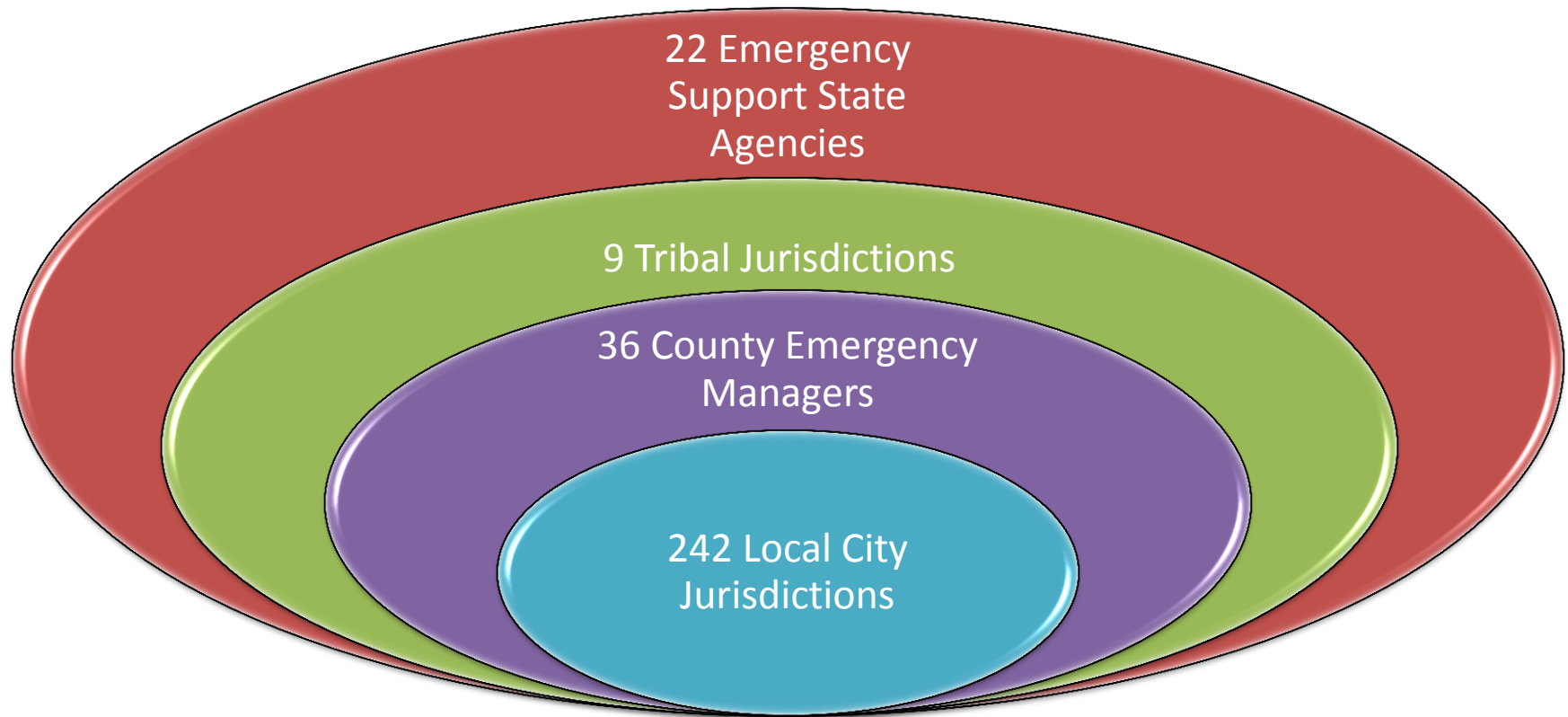
Emergency Support Functions

State Recovery Functions

ESF 1	Transportation		SRF 1	Community Planning and Capacity Building
ESF 2	Communications			
ESF 3	Public Works		SRF 2	Economic Recovery
ESF 4	Firefighting		SRF 3	Health Services
ESF 5	Information and Planning		SRF 4	Social Services
ESF 6	Mass Care	Mass Care	SRF 5	Disaster Housing
ESF 7	Resource Support		SRF 6	Infrastructure Systems
ESF 8	Health and Medical		SRF 7	Natural and Cultural Resources
ESF 9	Search and Rescue			
ESF 10	Hazardous Materials			
ESF 11	Food and Water			
ESF 12	Energy			
ESF 13	Military Support			
ESF 14	Public Information			
ESF 15	Volunteers and Donations	Volunteers and Donations		
ESF 16	Law Enforcement			
ESF 17	Agriculture and Animal Protection	Agriculture and Animal Protection		
ESF 18	Business and Industry			



Statewide Emergency Management Community





Public Private Partnerships (P3)



- Engaging with the whole community to build resiliency
- Private Sector Partners
 - 16 different sectors (power, telecom, water, manufacturing)
- Non-Profits
 - American Red Cross – Oregon Trail Chapter
 - Oregon Voluntary Organizations Active in Disaster
- Associations / Groups
 - Oregon Water/Wastewater Agency Response Network
 - Energy Emergency Management Team
 - Oregon Peoples Utility District Association
- Ongoing Successes
 - 7X24 Exchange – 16 Oct. 2014 / 154 Private Sector Companies / 54 Public Sector attendees
 - Cascadia Playbook ESF 18 – 24 Feb. 2015 / Refining Private Sector Inclusion
 - Identification and engagement of key partners including utility groups and CIKR
- New Emergency Support Functions (ESF 15 & 18)
- New State Recovery Function (SRF 2)



Questions?